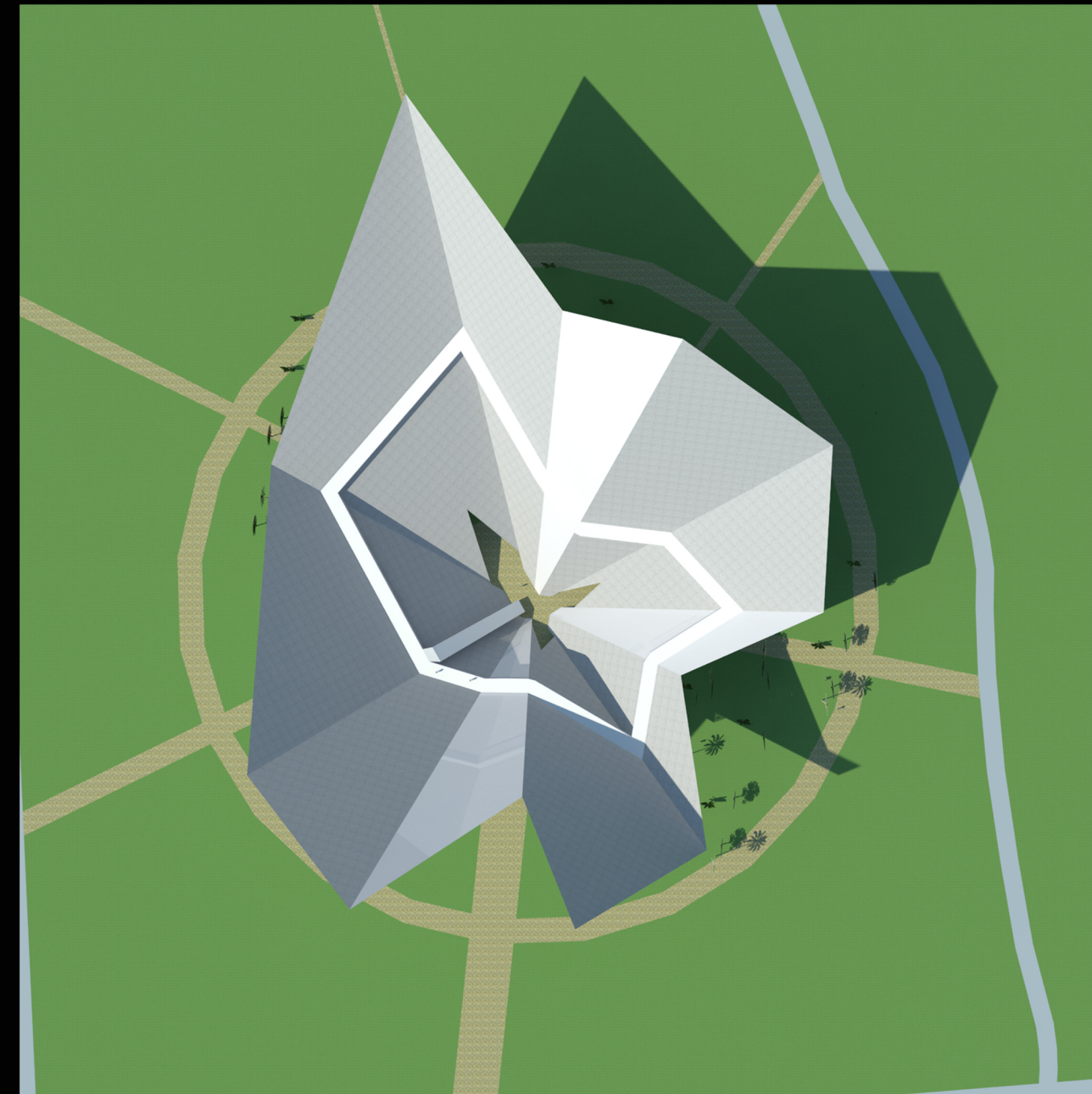


Wings of Silicon Valley

World-wide open ideas competition



master plan



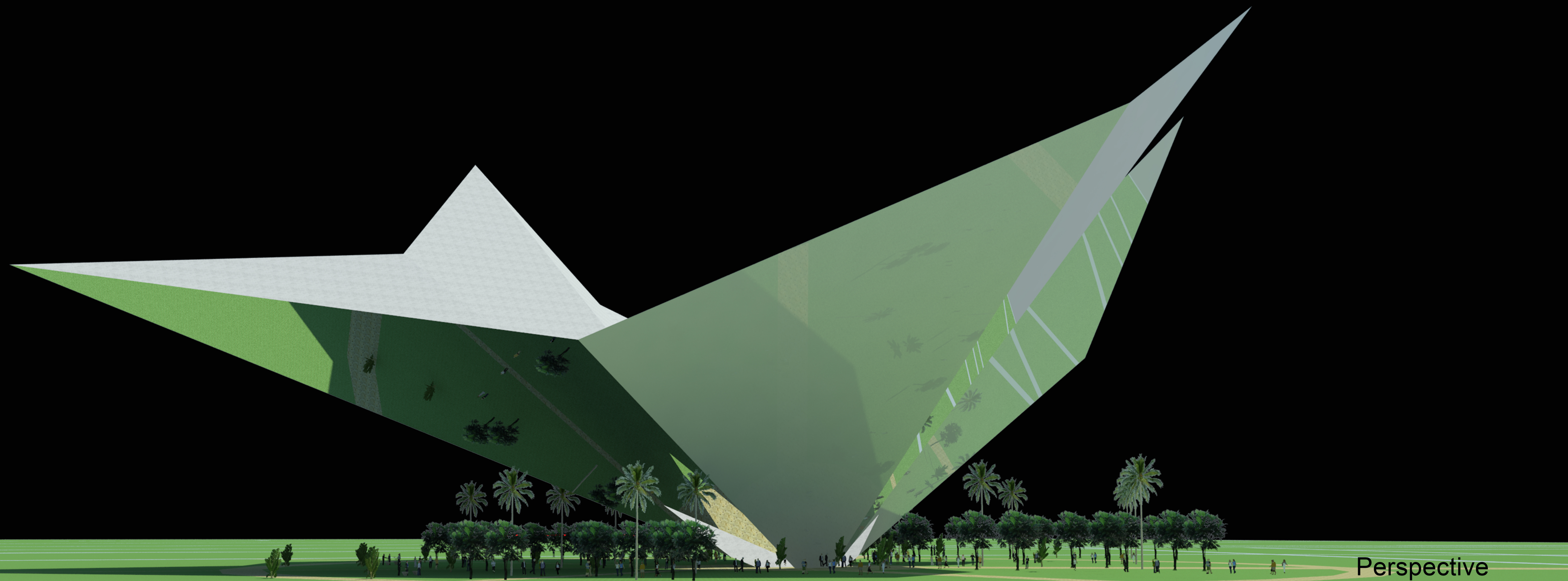
plan

The design provides a challenge. Height is limited, Position is not prominent. But after analysis, the importance of height and position is not the most important factor of this era landmark.

In this era, The tallest building (Eiffel Tower), sculpture (Statue of Liberty), and the most advanced construction technology (Bilbao Art Museum) has become the past.

when everything can be easily found on web. Landmarks should be difficult for people to perceive, full of uncertainty, to stimulate imagination.

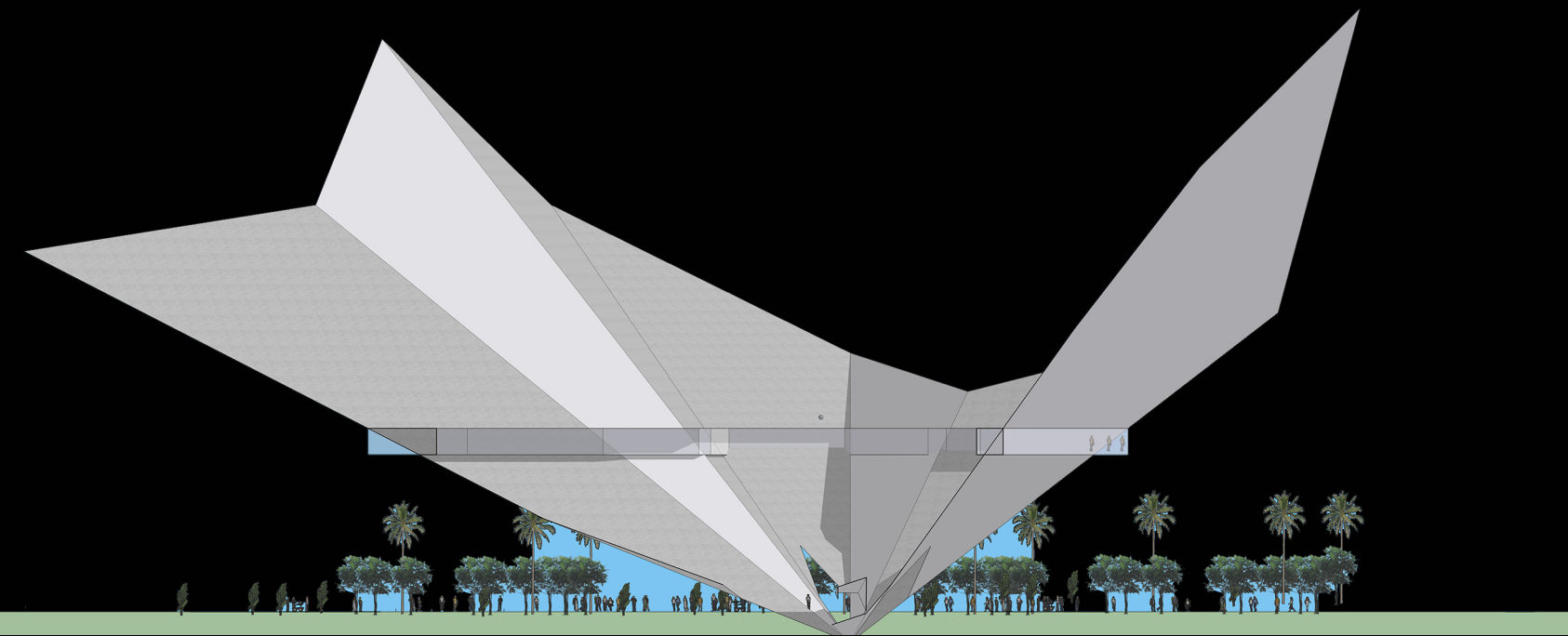
The design grasps the spirit of Silicon Valley, the birds taking off, the open palms, the blooming flowers and the surging waves. Which create an exciting and uncertain, which will have a new feeling from every viewpoint.



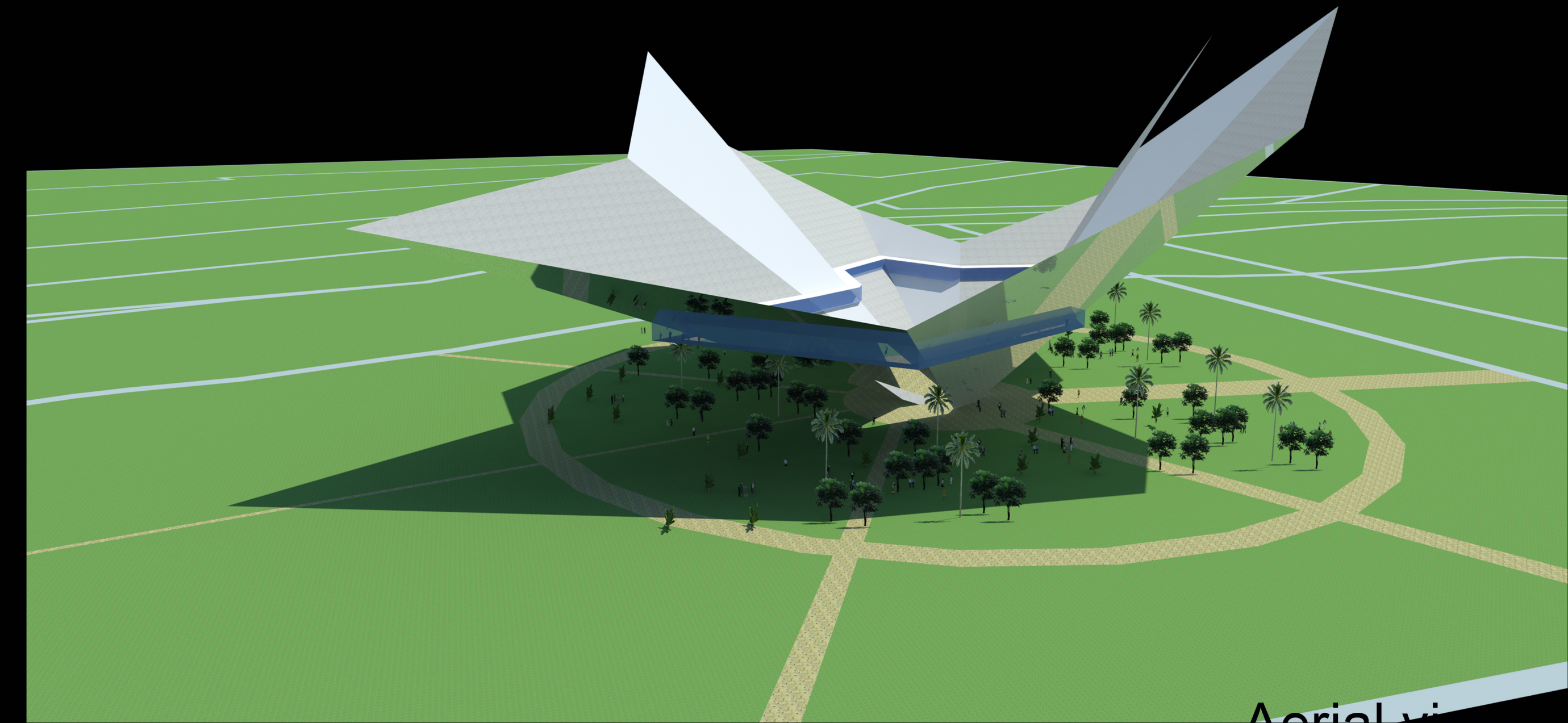
Perspective

Wings of Silicon Valley

World-wide open ideas competition



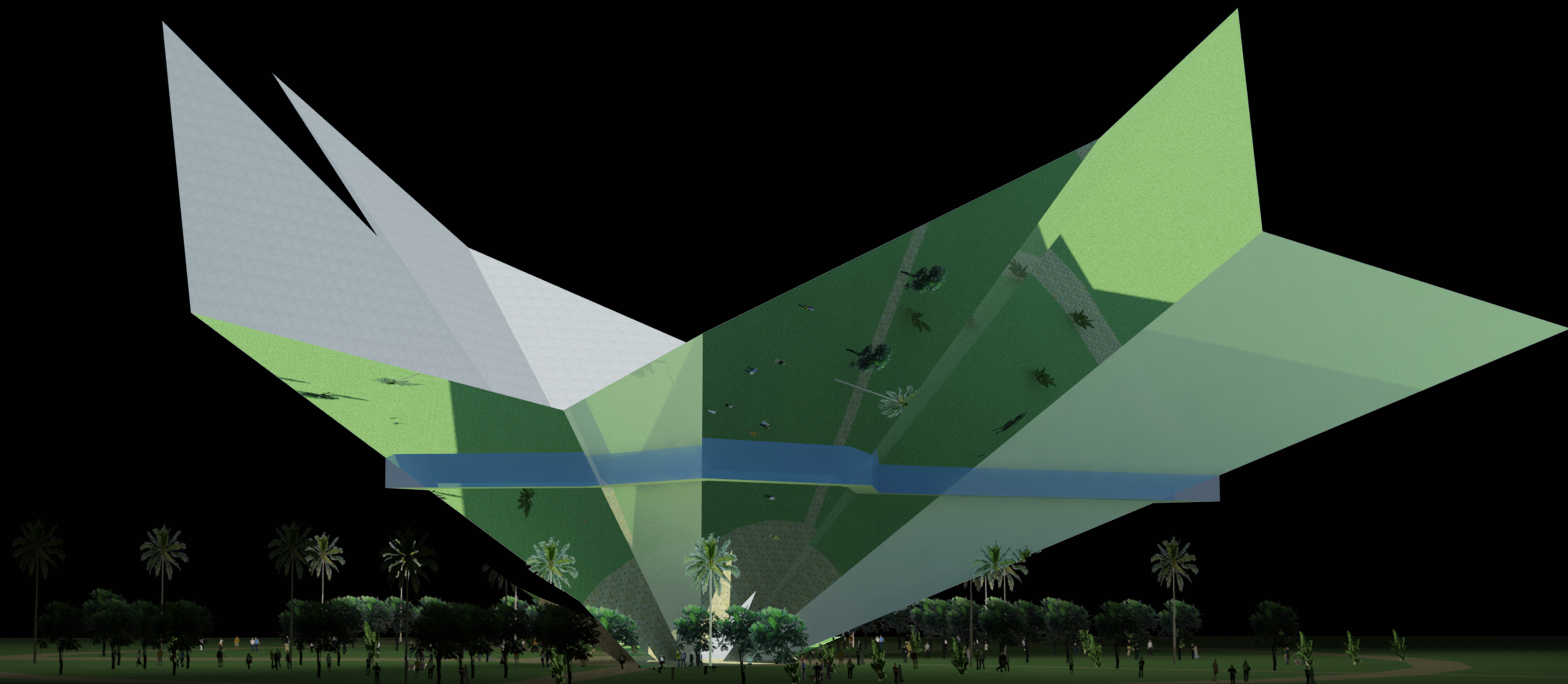
section



Aerial view

It has four characteristics:

1. The free shape and the stainless steel mirror reflection on the outer surface make the landmark full of uncertainty in the day and night. Only on the spot can we feel its scale and charm.
2. Its impact form provides the core spirit of Silicon Valley and the ability to inspire people's imagination and creation.
3. People can not only gather on the surrounding lawn to chat, but also go up the stairs to the structures to observe the surrounding scenery from the air.
4. The existence of landmarks makes the surrounding space attractive for people to gather and communicate.



Night view