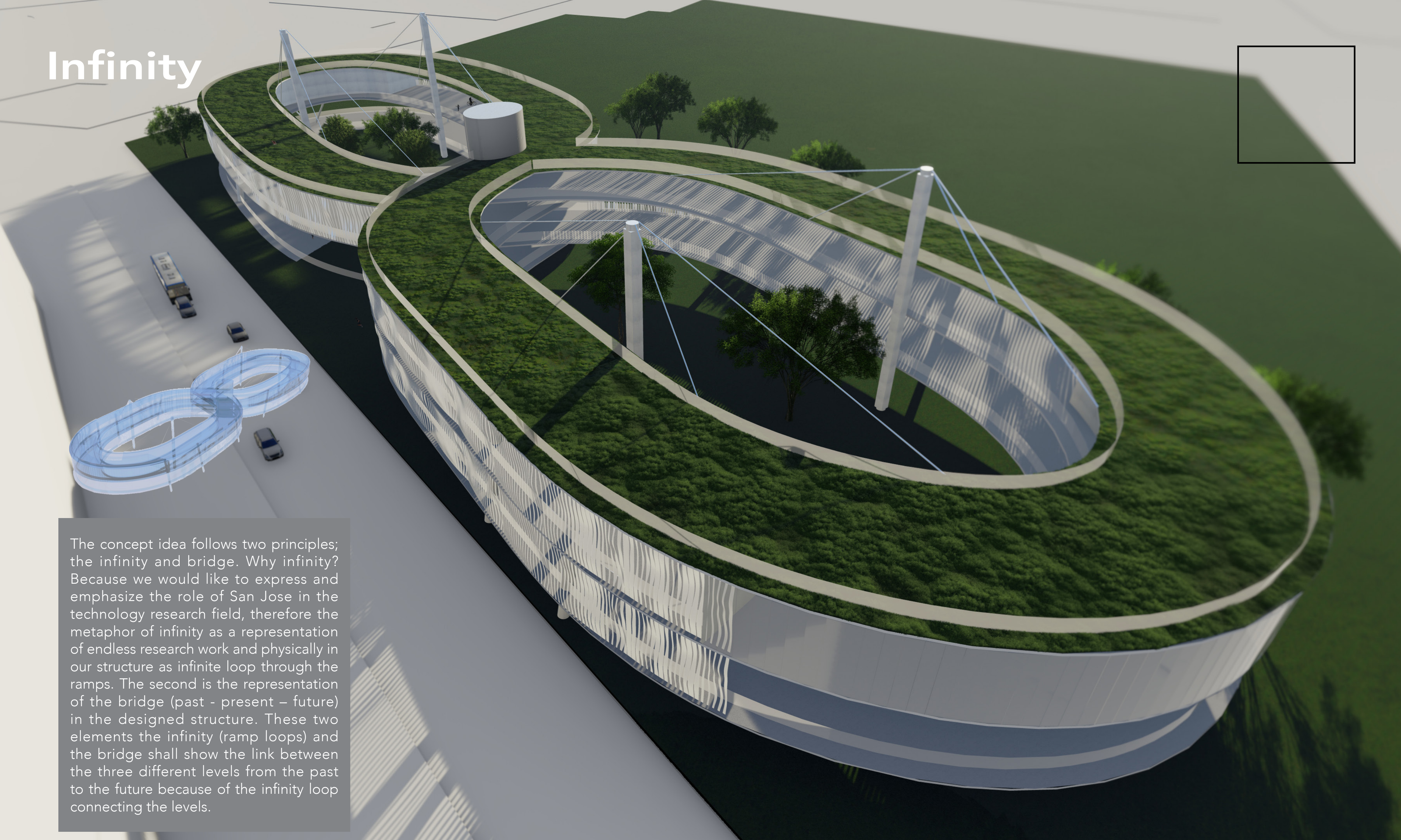
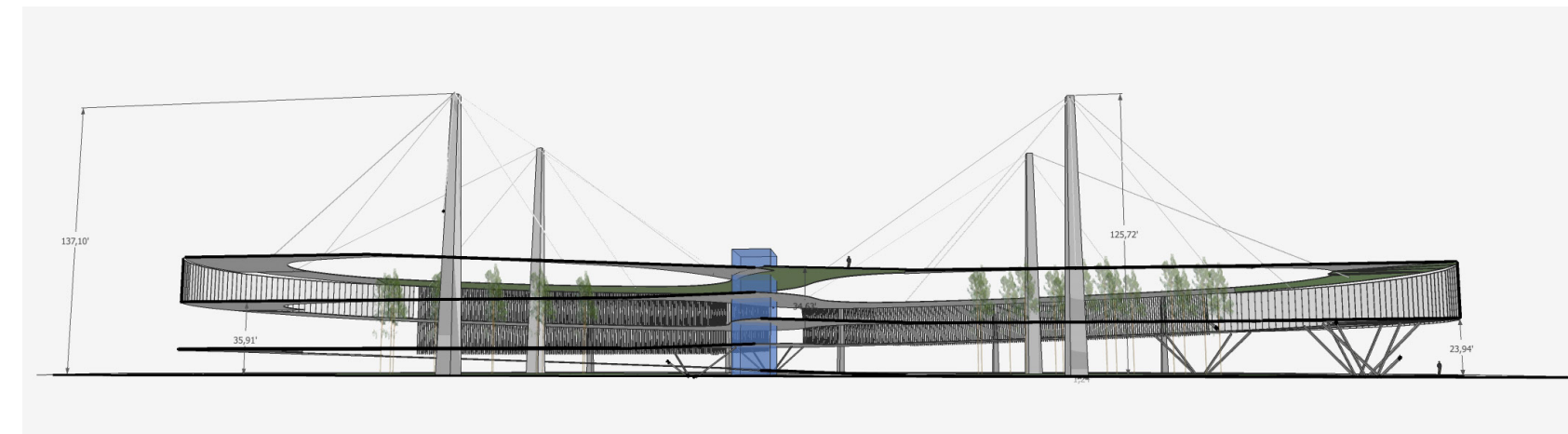
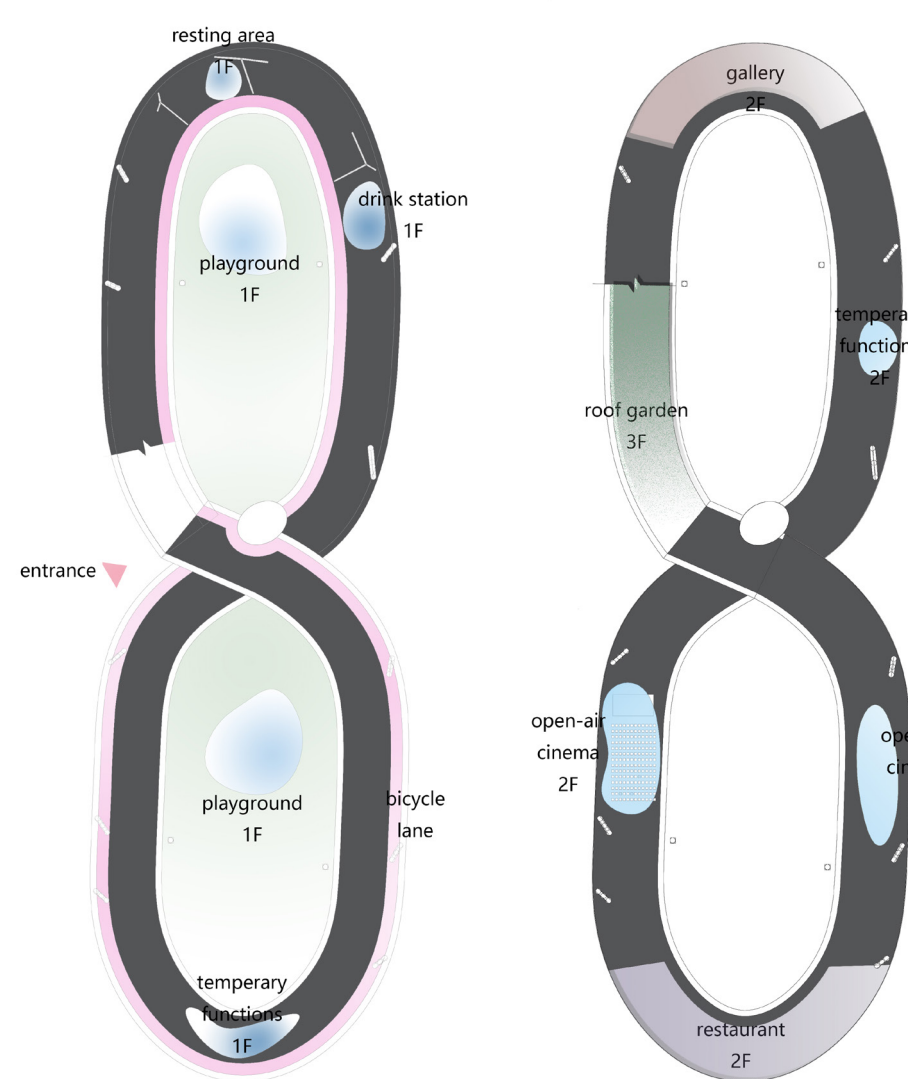


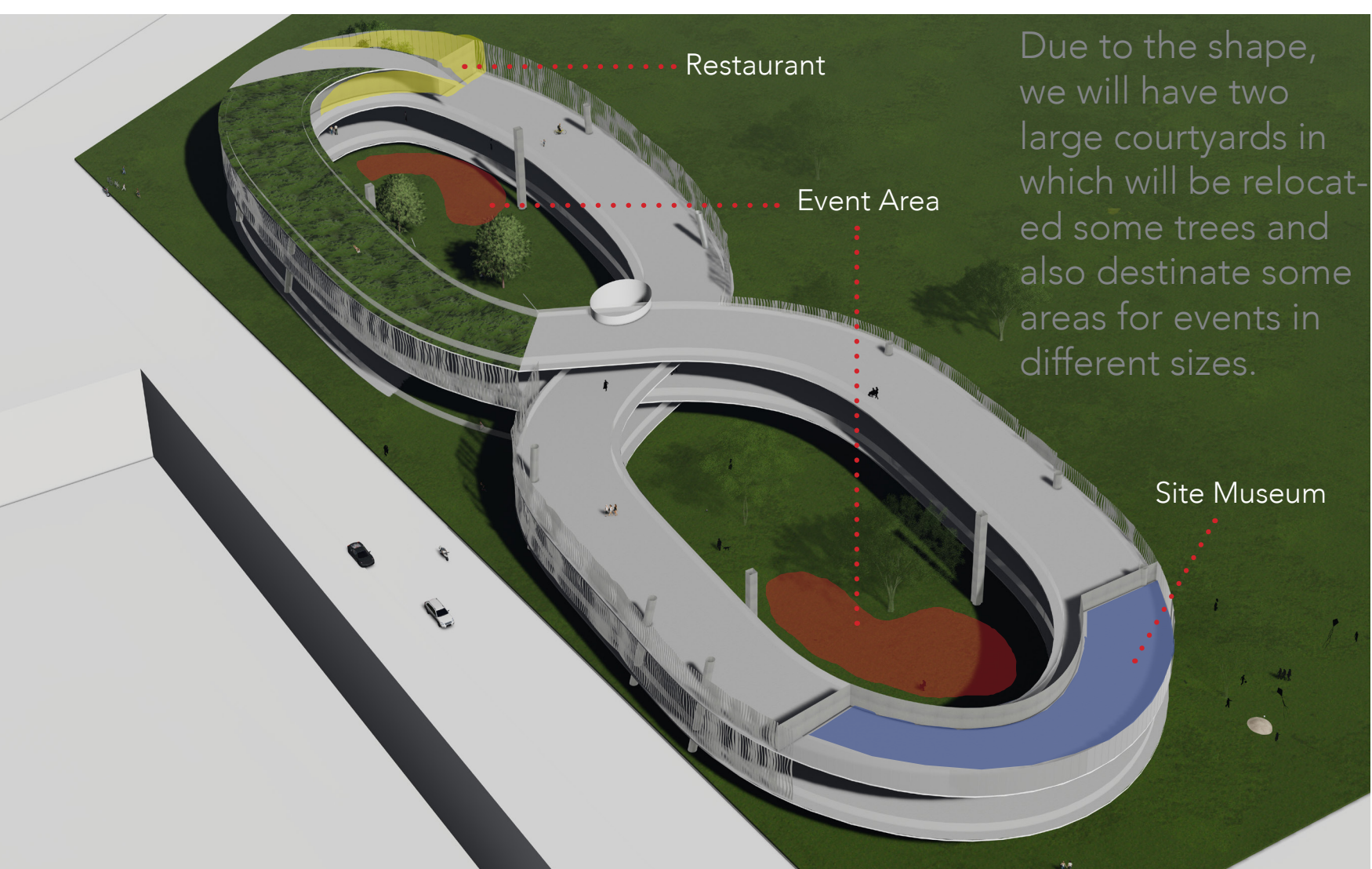
Infinity



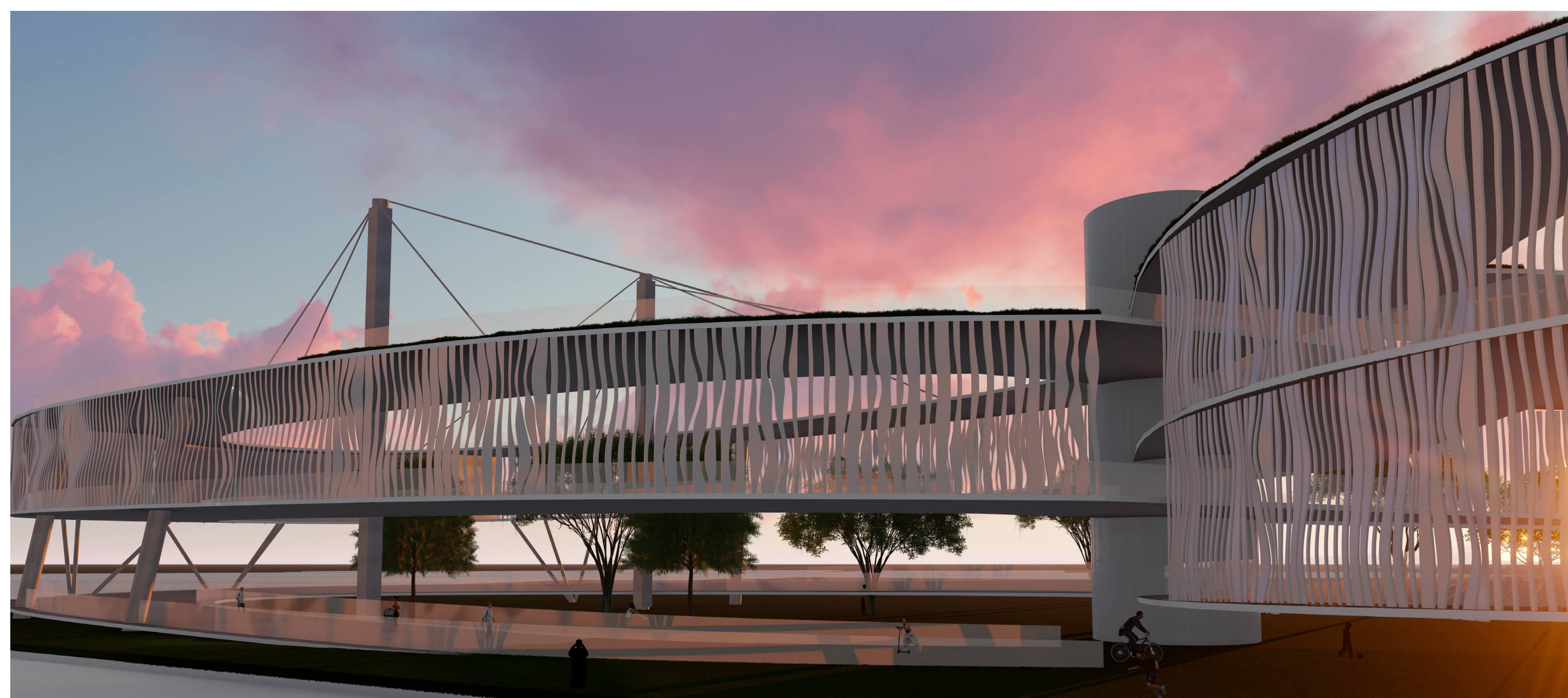
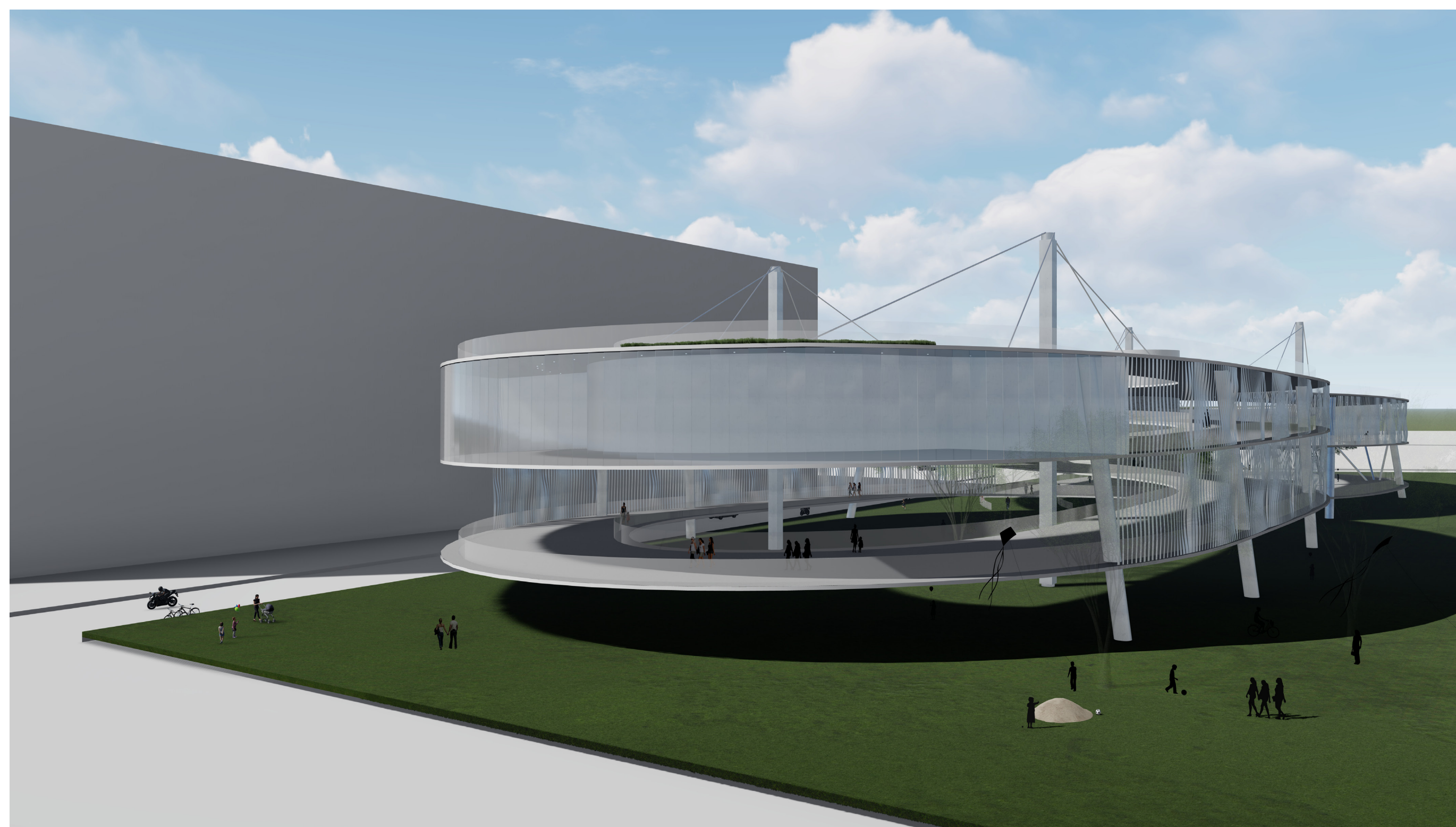
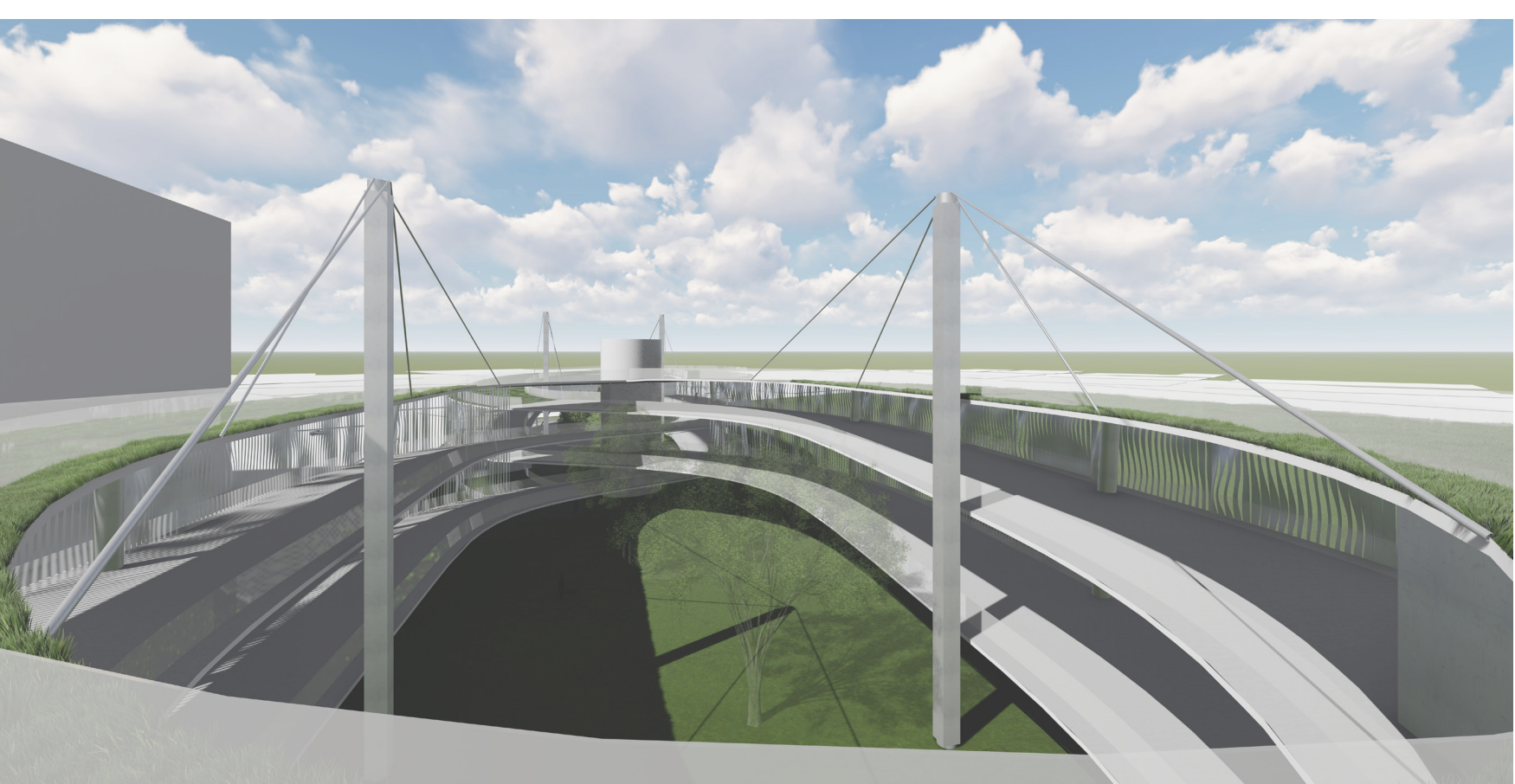
The concept idea follows two principles; the infinity and bridge. Why infinity? Because we would like to express and emphasize the role of San Jose in the technology research field, therefore the metaphor of infinity as a representation of endless research work and physically in our structure as infinite loop through the ramps. The second is the representation of the bridge (past - present - future) in the designed structure. These two elements the infinity (ramp loops) and the bridge shall show the link between the three different levels from the past to the future because of the infinity loop connecting the levels.



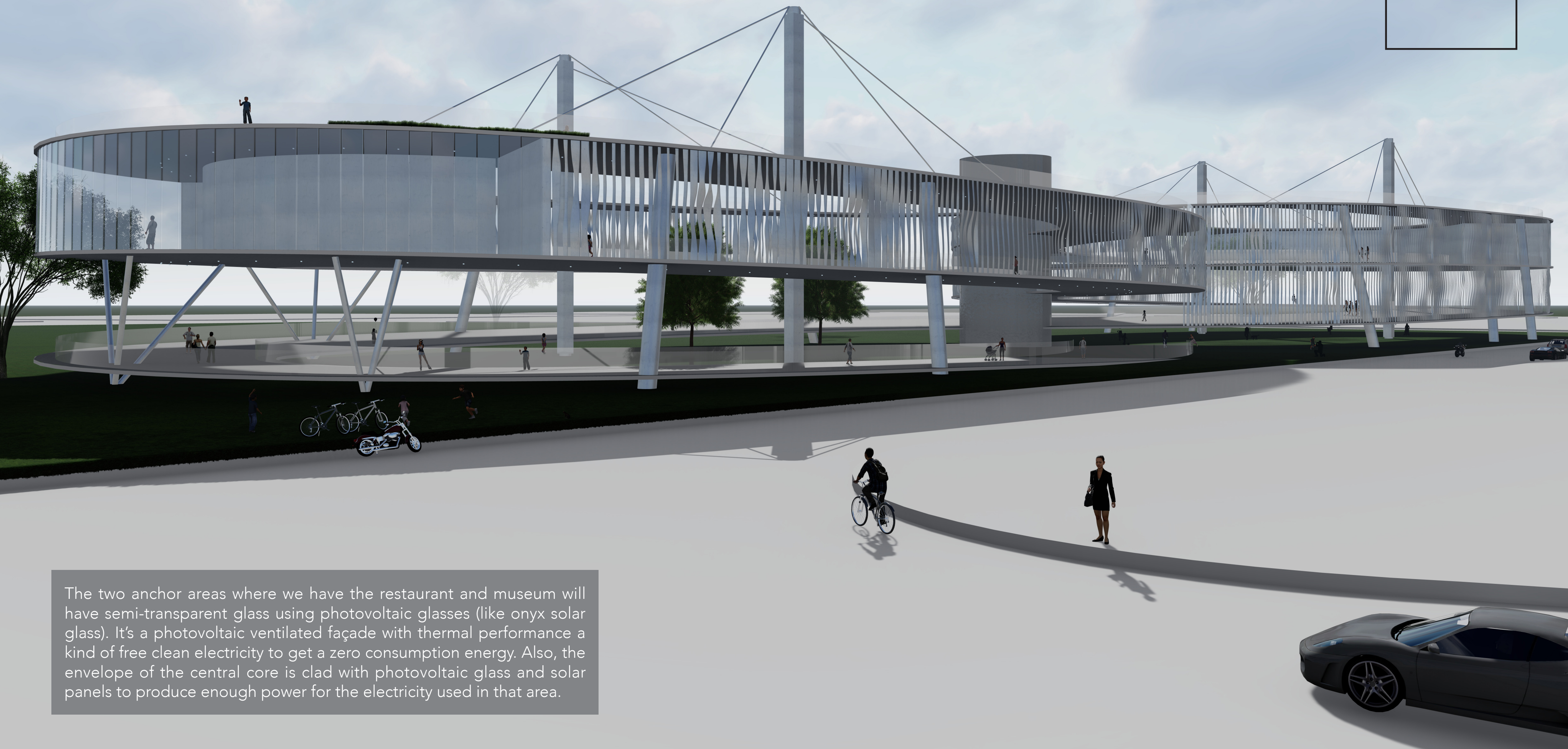
The structure is elevated, allowing the persons to go through in the park, creating a continuous flow on the ground and landscape. This structure is a kind of elevated landscape (hard and soft landscape) a kind of platform to observe the park and the environment. It's almost a completely open structure besides the two ends where we will have a museum and restaurant.



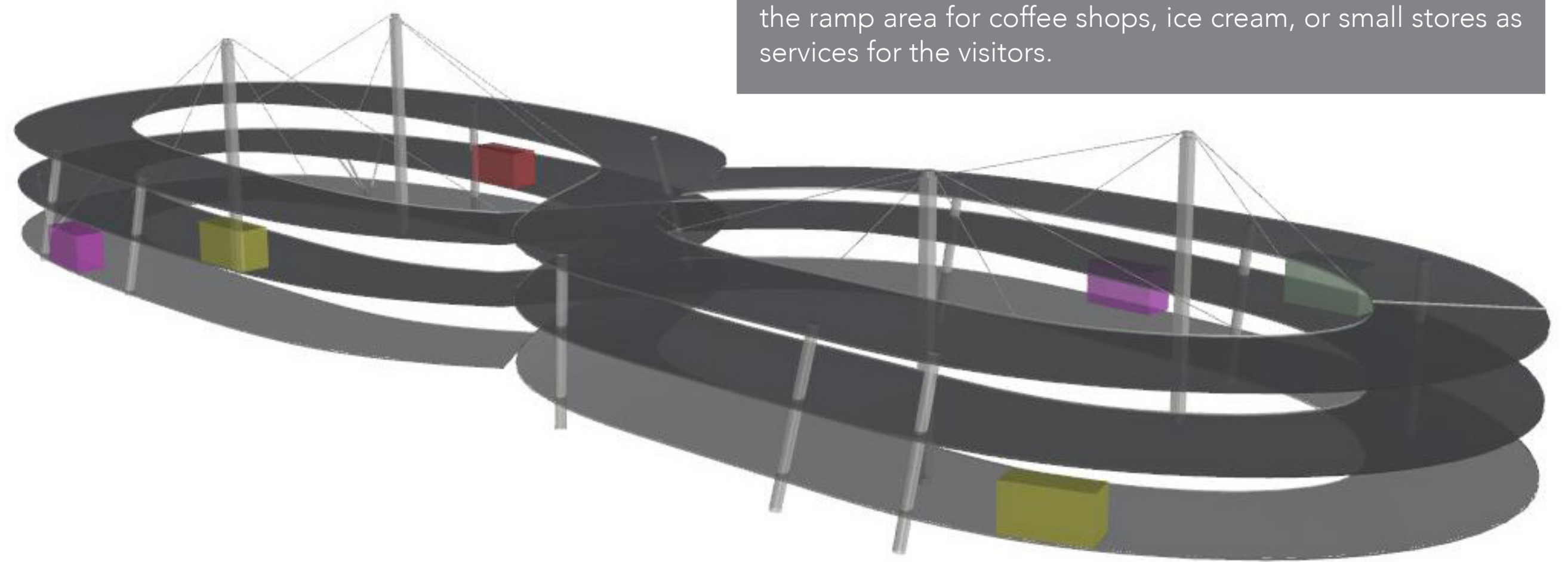
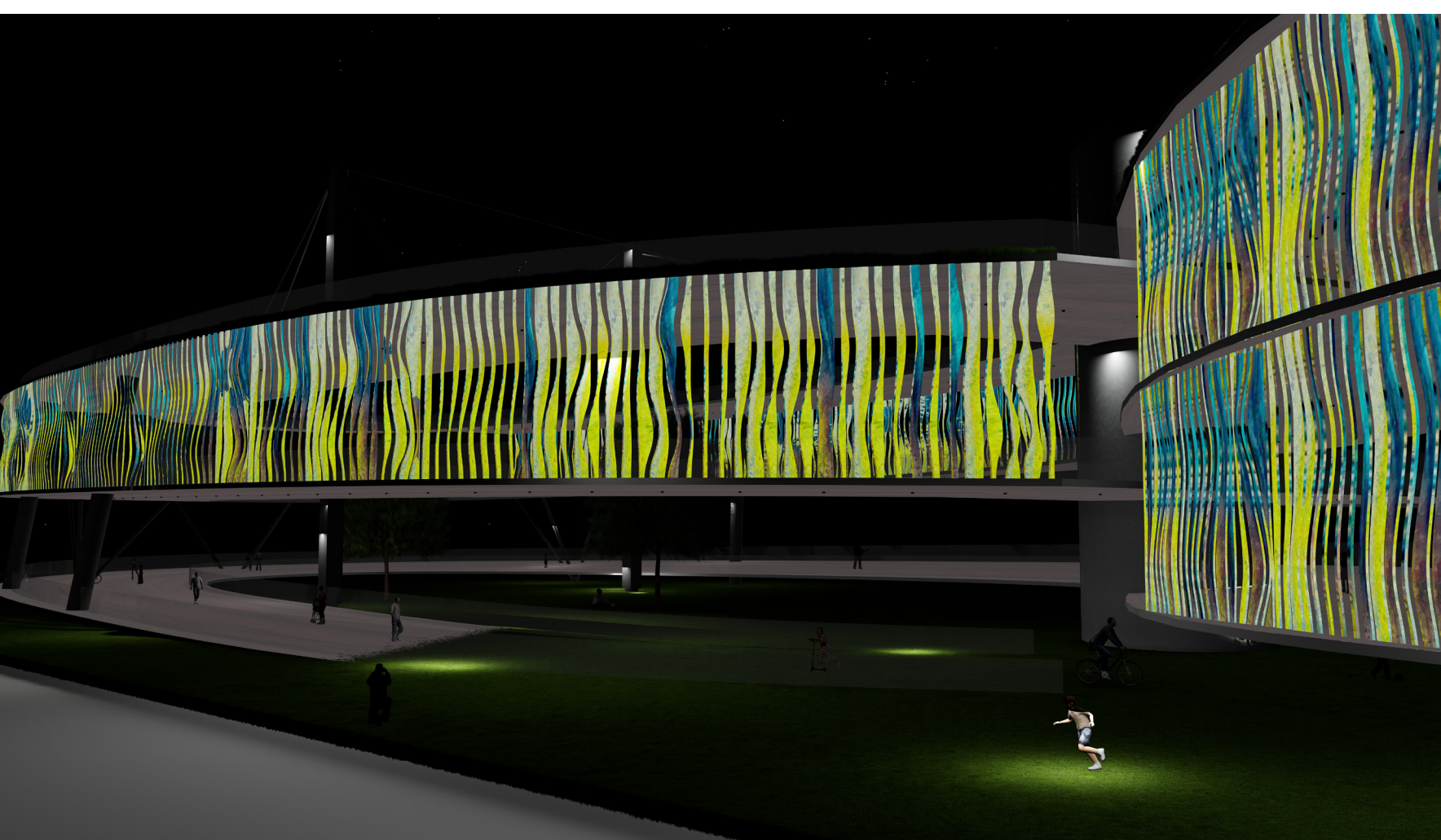
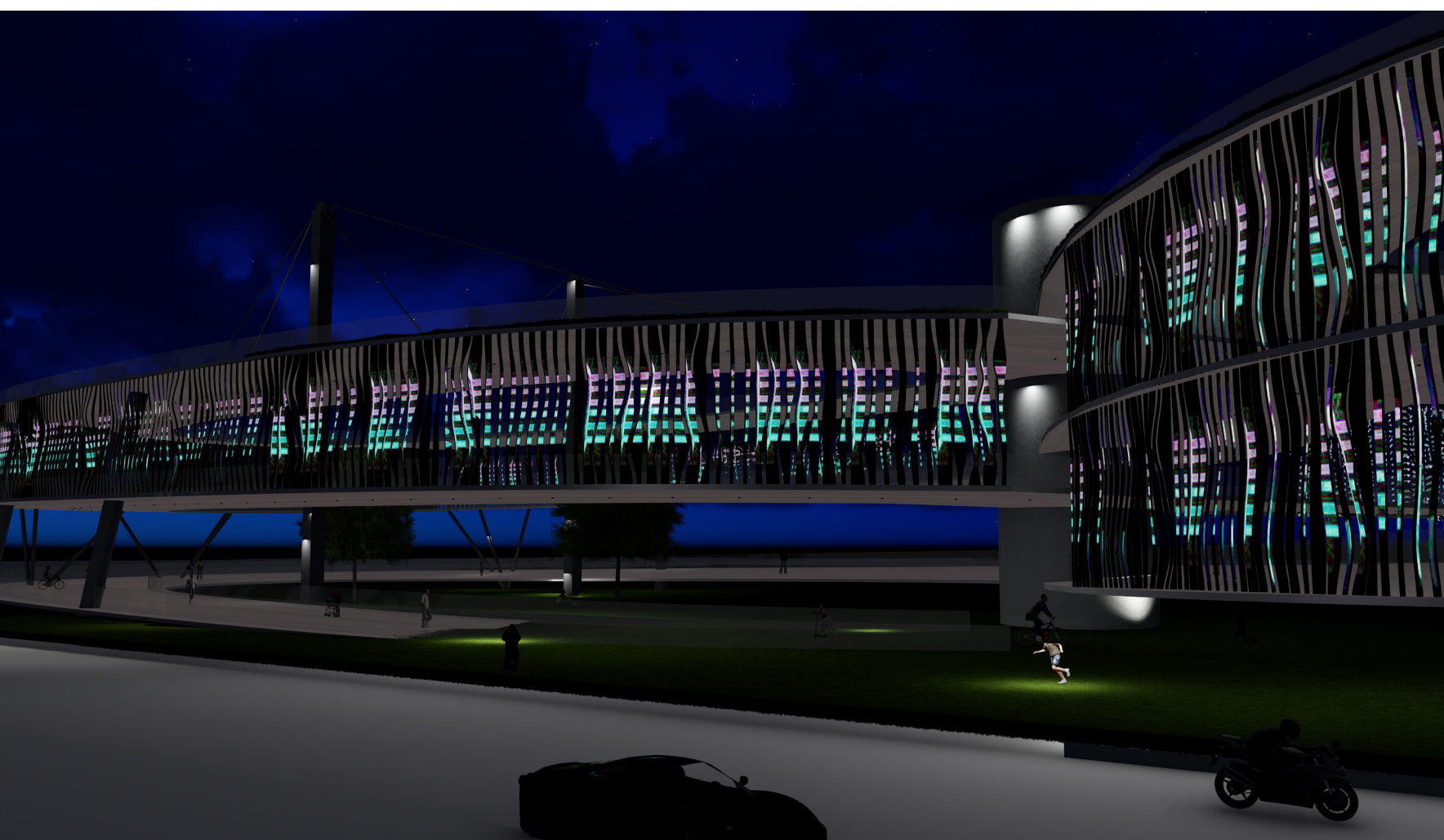
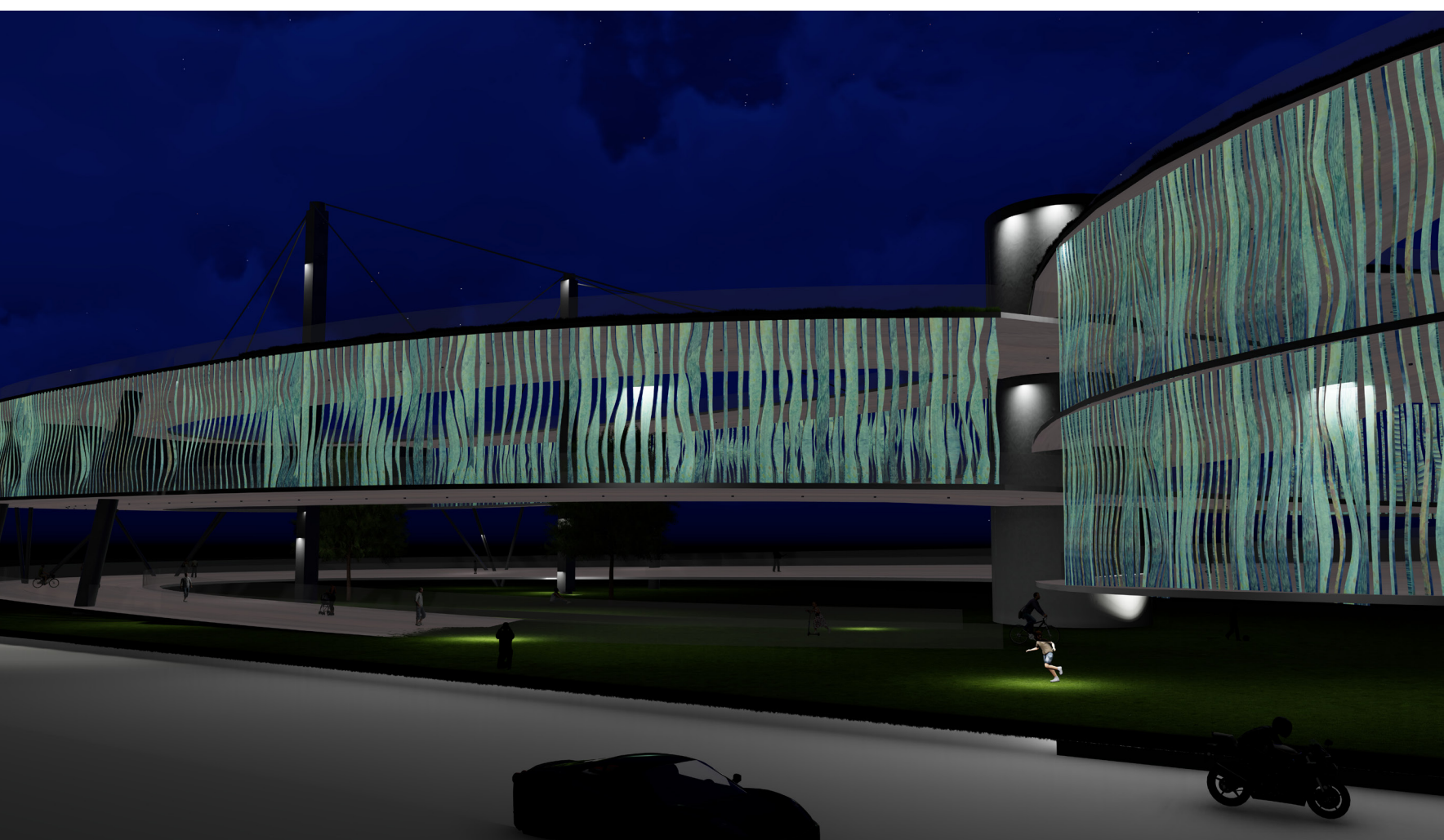
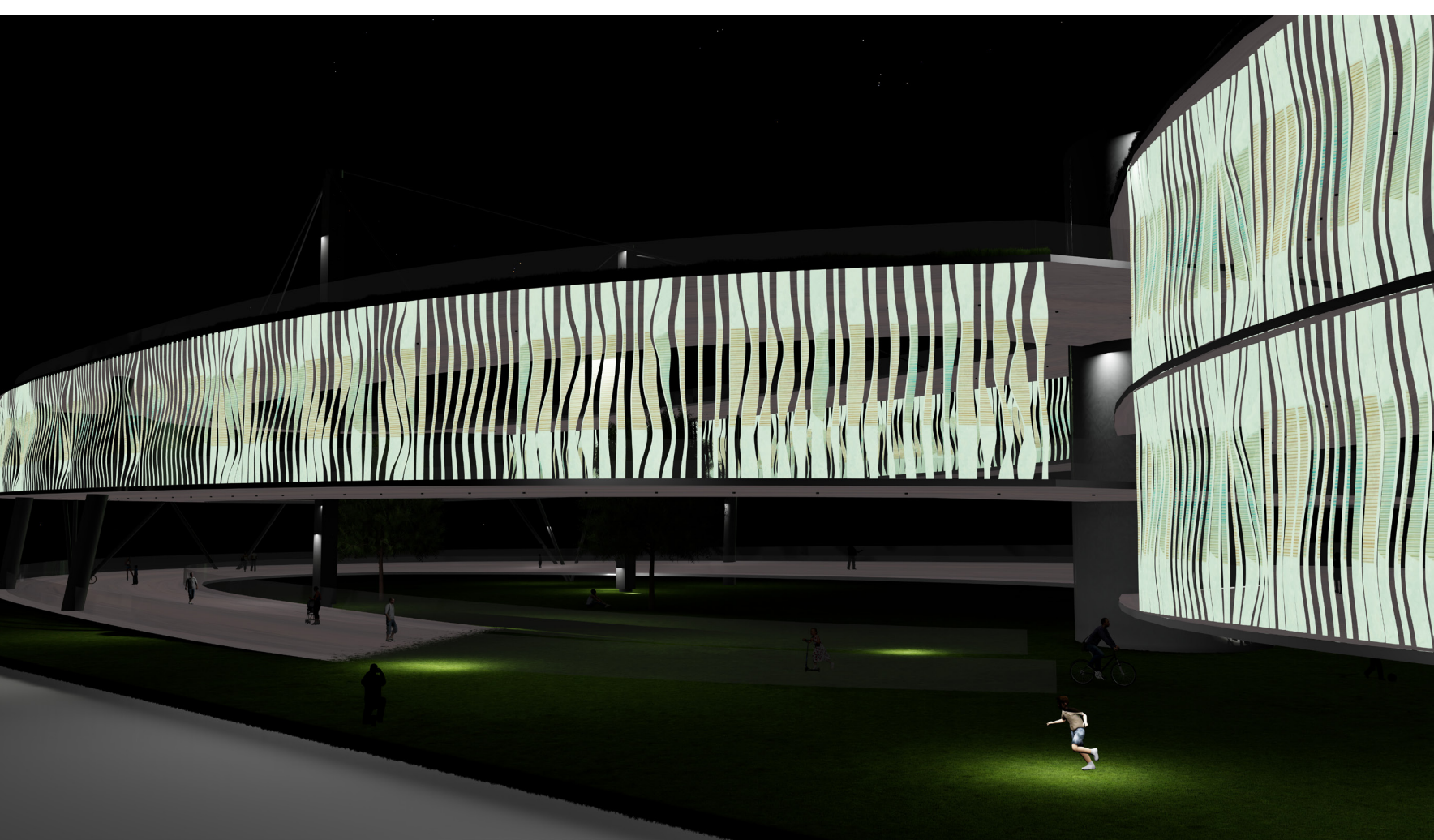
Due to the shape, we will have two large courtyards in which will be relocated some trees and also destinate some areas for events in different sizes.



Infinity



The two anchor areas where we have the restaurant and museum will have semi-transparent glass using photovoltaic glasses (like onyx solar glass). It's a photovoltaic ventilated façade with thermal performance a kind of free clean electricity to get a zero consumption energy. Also, the envelope of the central core is clad with photovoltaic glass and solar panels to produce enough power for the electricity used in that area.



It's also planned to have a temporary and moveable kiosk in the ramp area for coffee shops, ice cream, or small stores as services for the visitors.

To show the infinity movement, we have installed moveable louvres which move with solar energy; those louvres also perform as protection for the pedestrians inside of the ramp. These louvres will also have a subtle light for the night and don't disturb the birds on the park.

