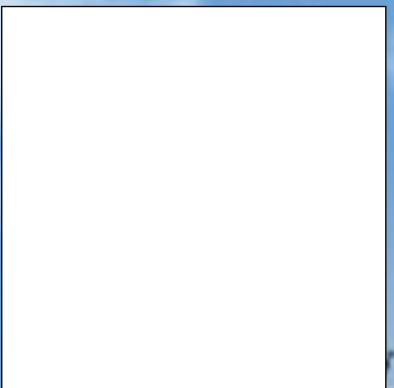
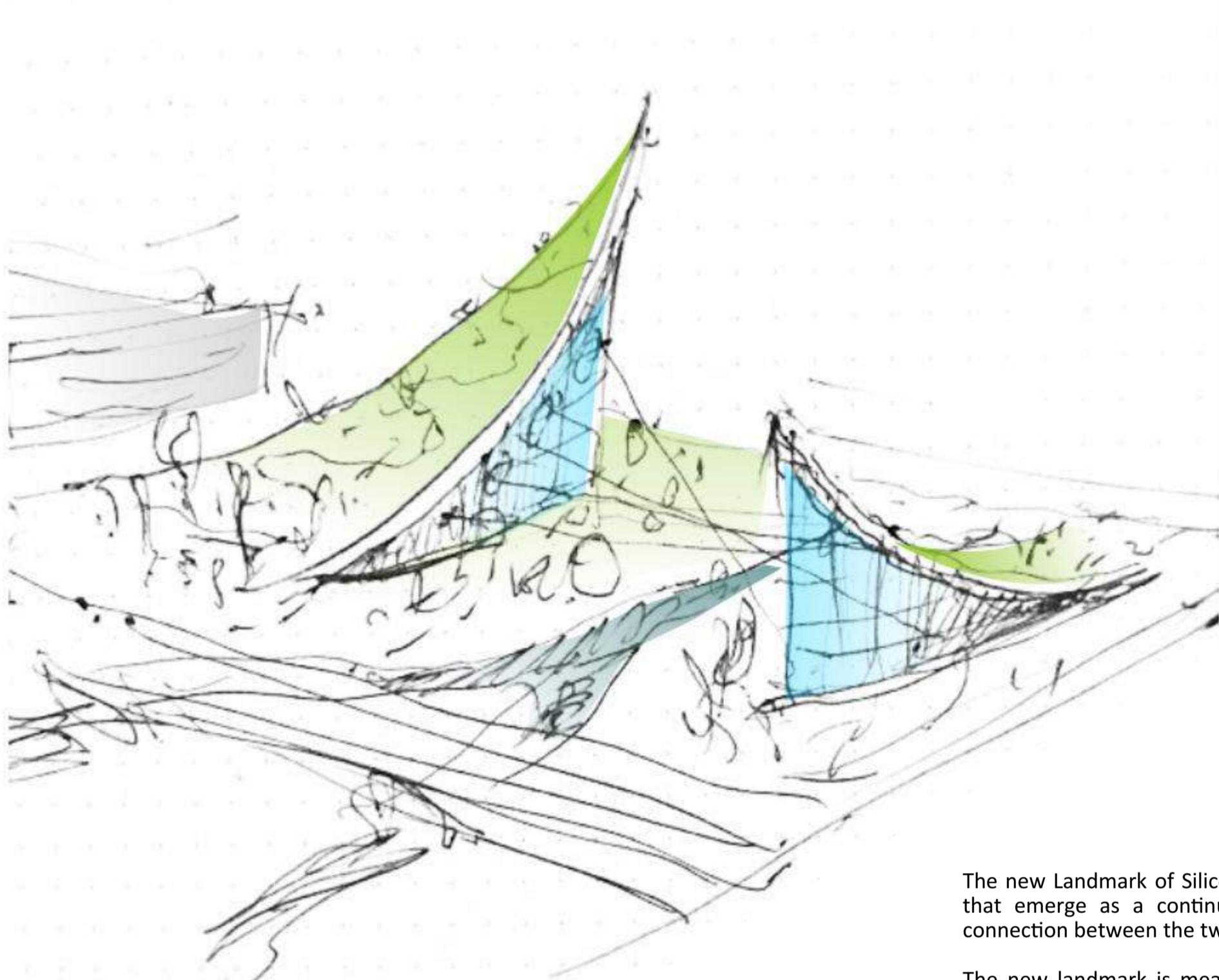


SILICON PEAKS



Perspective from SAP Center



Silicon Peaks sketch

STRUCTURE DIMENSIONS

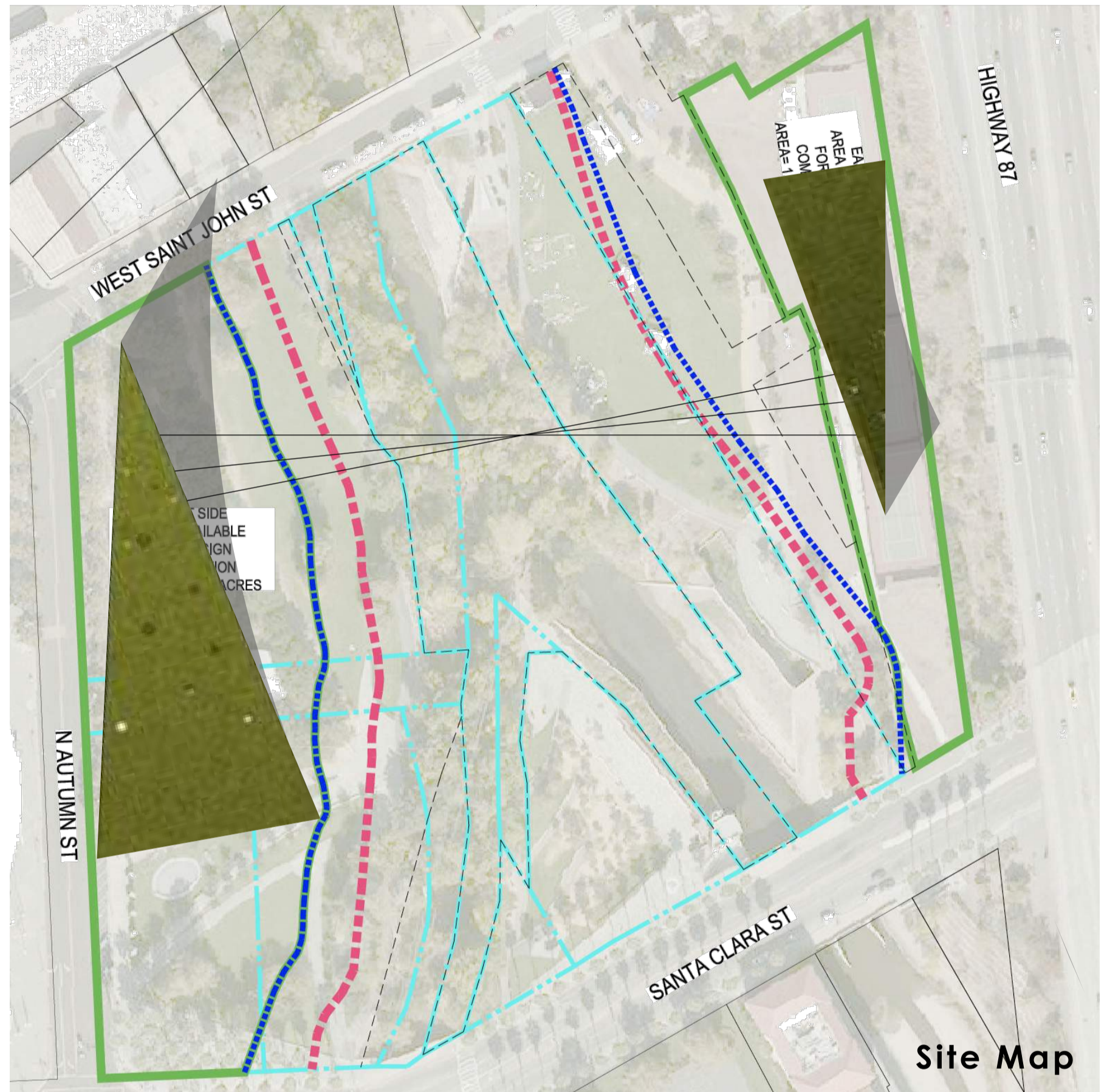
Height:	210 feet	150 feet
Length:	460 feet	330 feet
Width:	210 feet	120 feet

Project Summary

The new Landmark of Silicon Valley - Silicon Peaks, two mountains like structures that emerge as a continuation of the existing landscape and make a visual connection between the two riversides.

The new landmark is meant to enhance the outdoor and indoor activities thus creating a meaningful place for the most people. The two peaks are to be connected by a cable car system that is to provide a great view towards the park and surroundings.

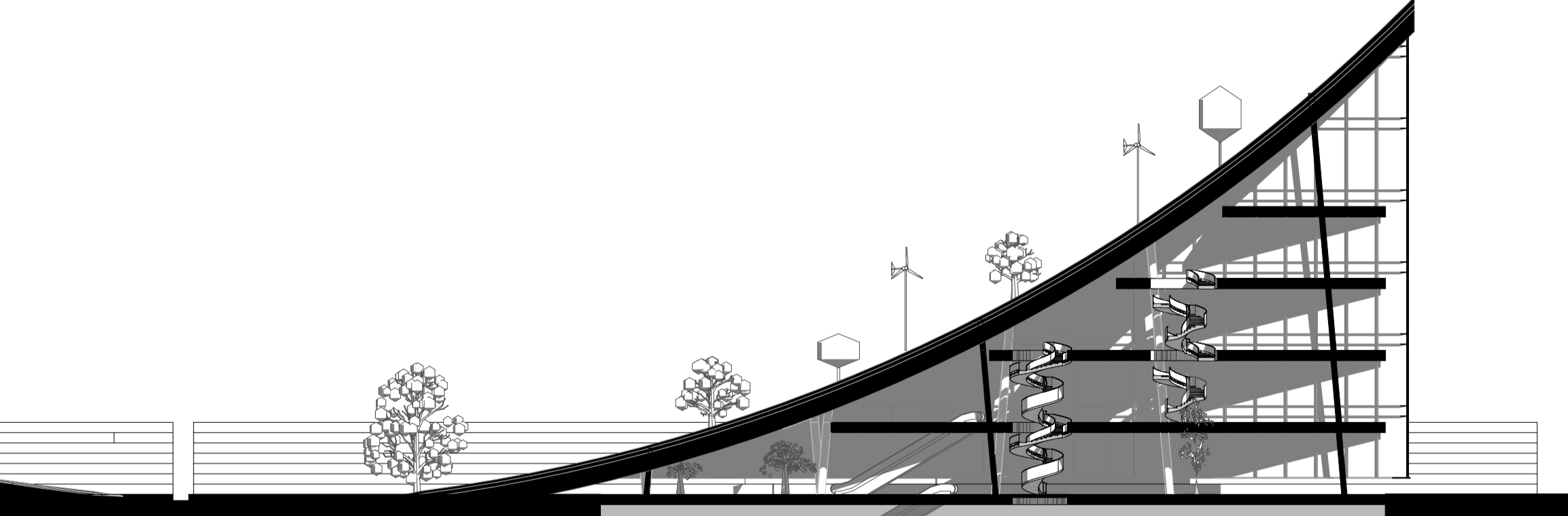
The new landmark project is to showcase onsite generation of renewable energy through solar and wind power.



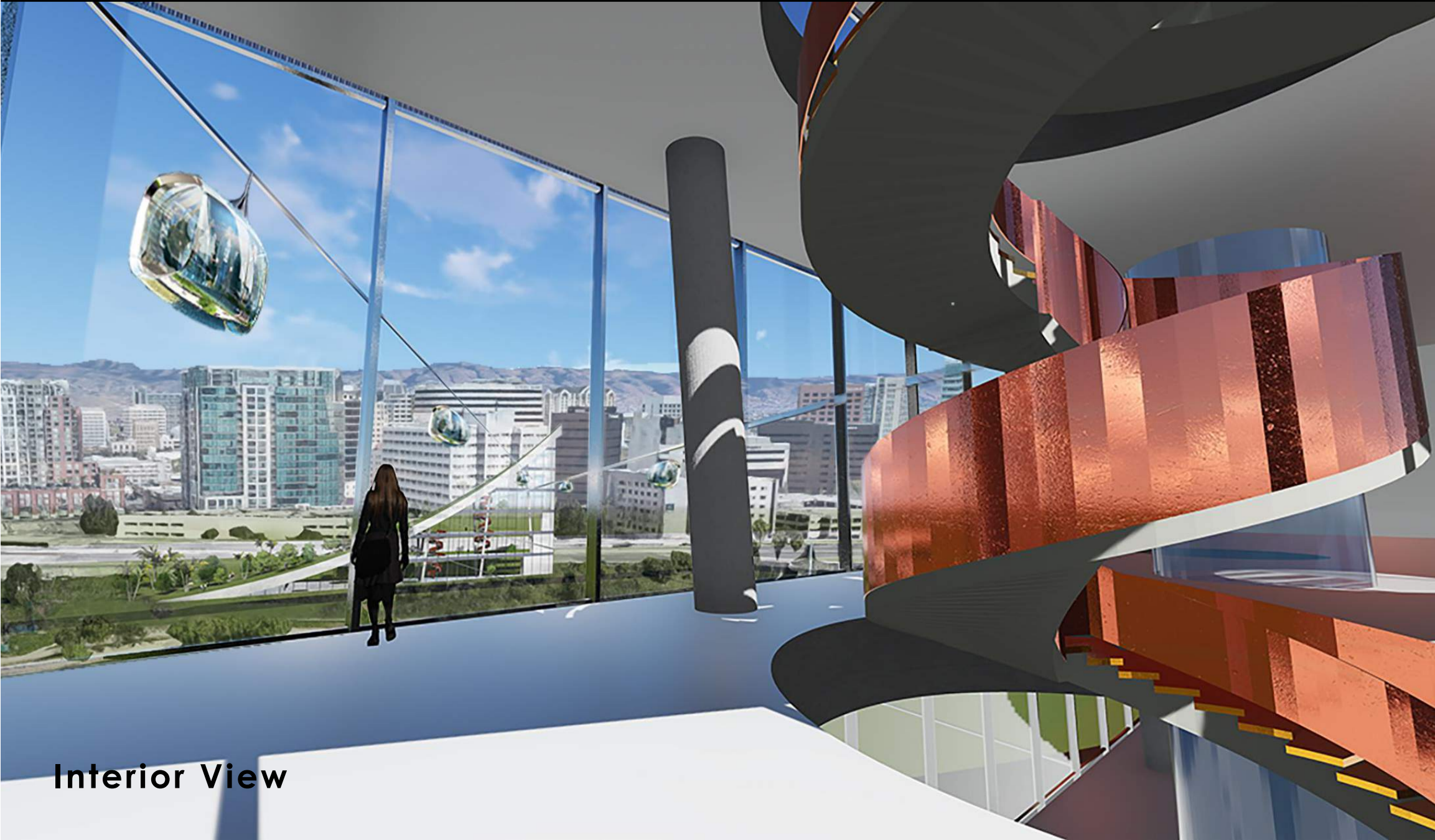
Site Map



Section 1



Section 2



Interior View



View from river bank



Perspective from Guadalupe Fwy



Site Map - Ground Floor Scheme



Peaks View



Interior View



Aerial View