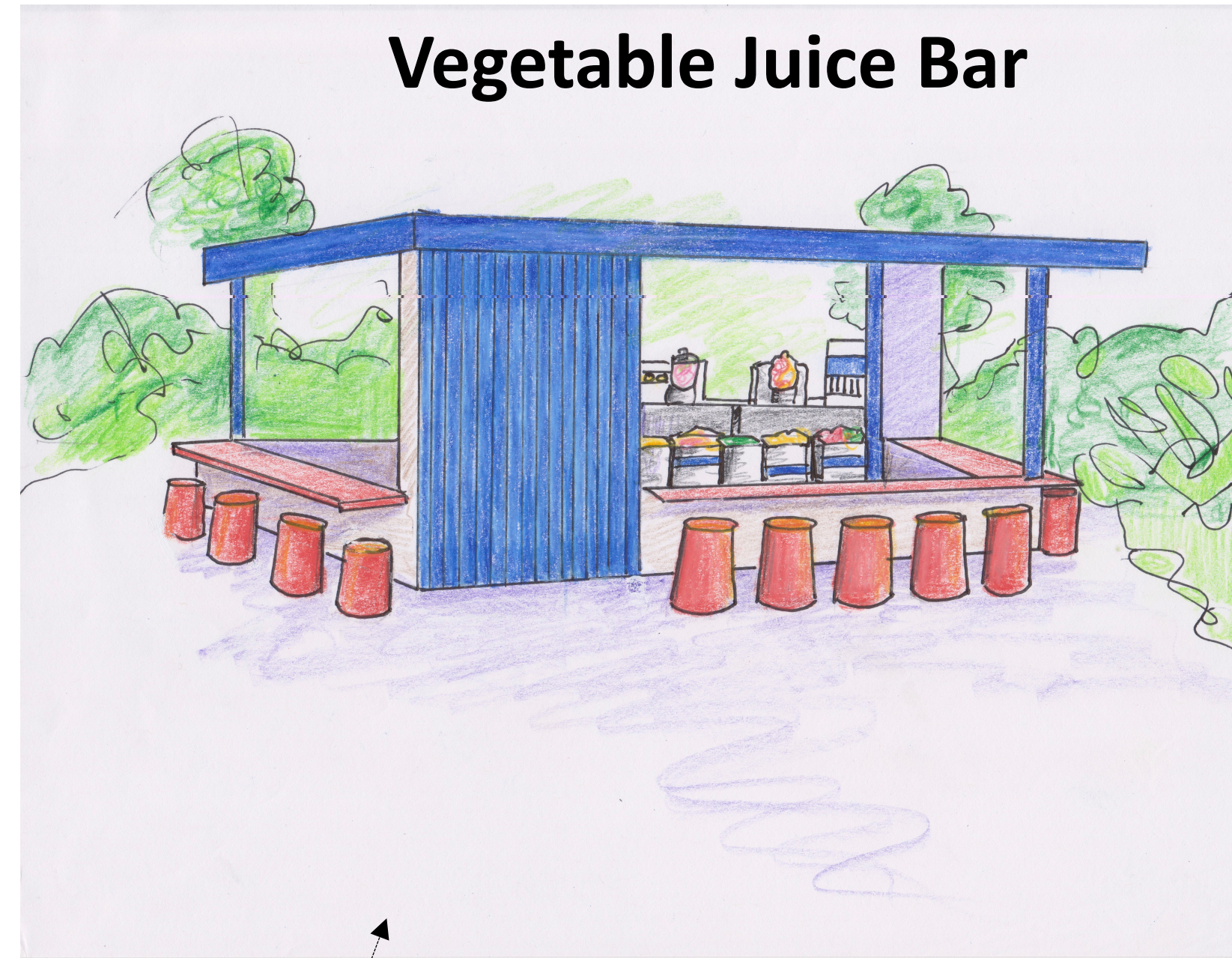


Arena Green Amphitheater



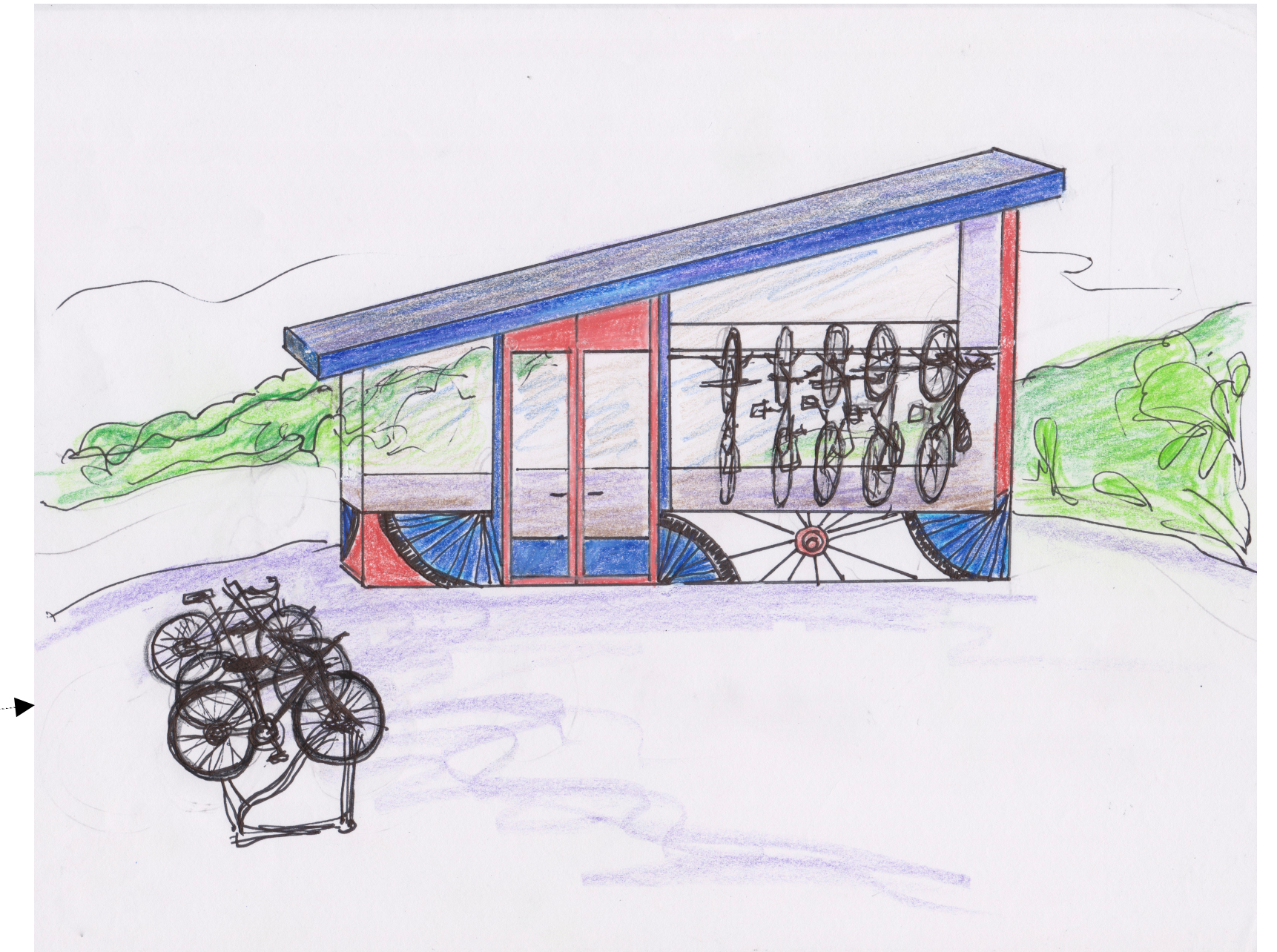
This amphitheater sits approximately 100 feet away from The Zocalo Light Tower with the ringed, half-circle of the amphitheater seats facing a performance stage. The seats look directly southeast towards The Light Tower and downtown San Jose. The amphitheater is built into a hillside with sloping grass behind and on either side of the sitting area. It is anticipated that frequent lunchtime and weekend concerts and presentations will occur on this stage with local performers and entertainers scheduled regularly.

Juicy Lucy's Fresh Fruit and Vegetable Juice Bar



The northwest end of Arena Green will contain a natural juice bar. Tables and chairs outdoors can provide seating for 30-40 people at this end of the Park. Juices, prepared from fresh, natural ingredients as ordered, will approximate a "jugueria" found in Mexico and elsewhere. Gelato manufactured locally from natural flavors would also be served from Juicy Lucy's Juice Bar.

Green Machine Bicycle Shoppe

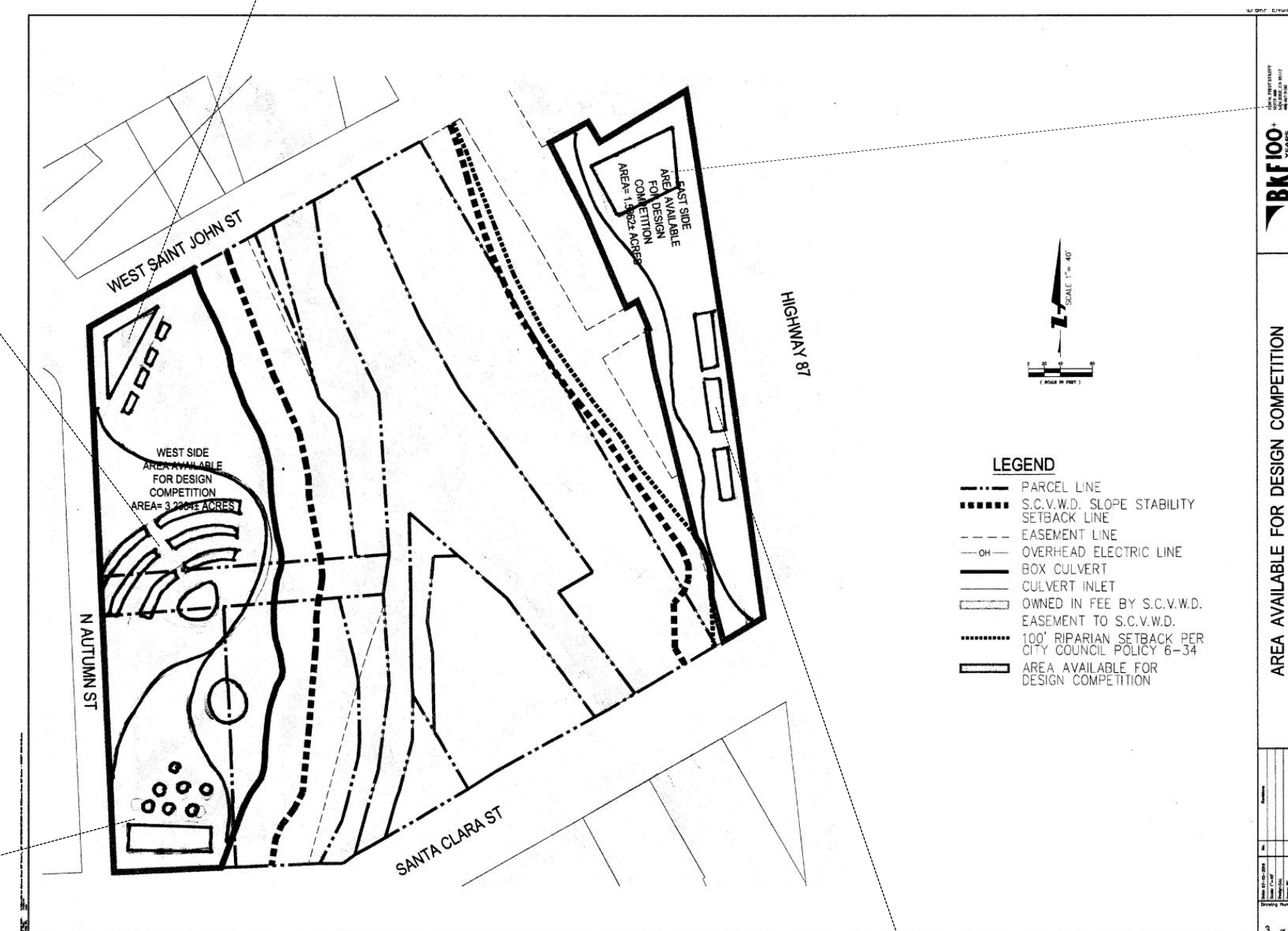


On the other side of the river, hugging the north border of the park will be a small bicycle business offering rentals, repairs and sales of a modest amount of new bicycles. The intent of the bicycle business is to encourage riding to the park and from the park to points in downtown San Jose and Silicon Valley. Bicycle maps of trails throughout the area will be available as well as expert advice dispensed from the bicycle shop personnel. Flat tire repairs and quick fixes of mechanical problems will also be dispensed from the shop. Seating will be provided around the shop for patrons to rest, eat or wait while repairs transpire.

Confluence Cafe and Wine Bar



Facing the other side of the Zocalo Light Tower in the southwest corner of Arena Green is Confluence Coffee and Wine Bar. From here, patrons can order at a counter and take away or sit at tables scattered around the front, looking towards the Zocalo Light Tower. It is assumed that local purveyors of roasted coffee and local wineries from the surrounding area will be featured at the Confluence Café and Wine Bar. Small tables and chairs will seat 25-30 people.



Arena Green Farmers' Market and The Zocalo Food Stalls

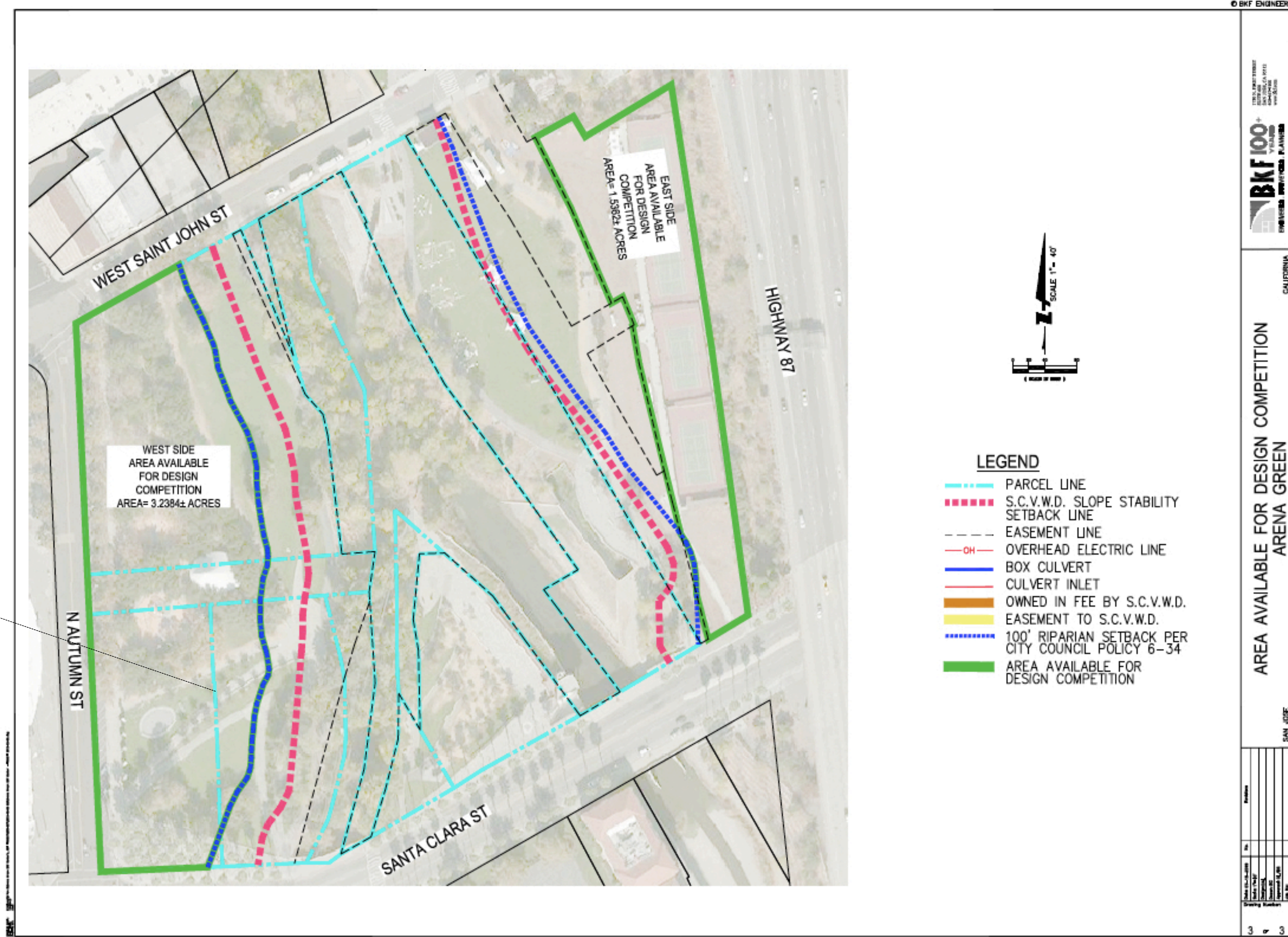
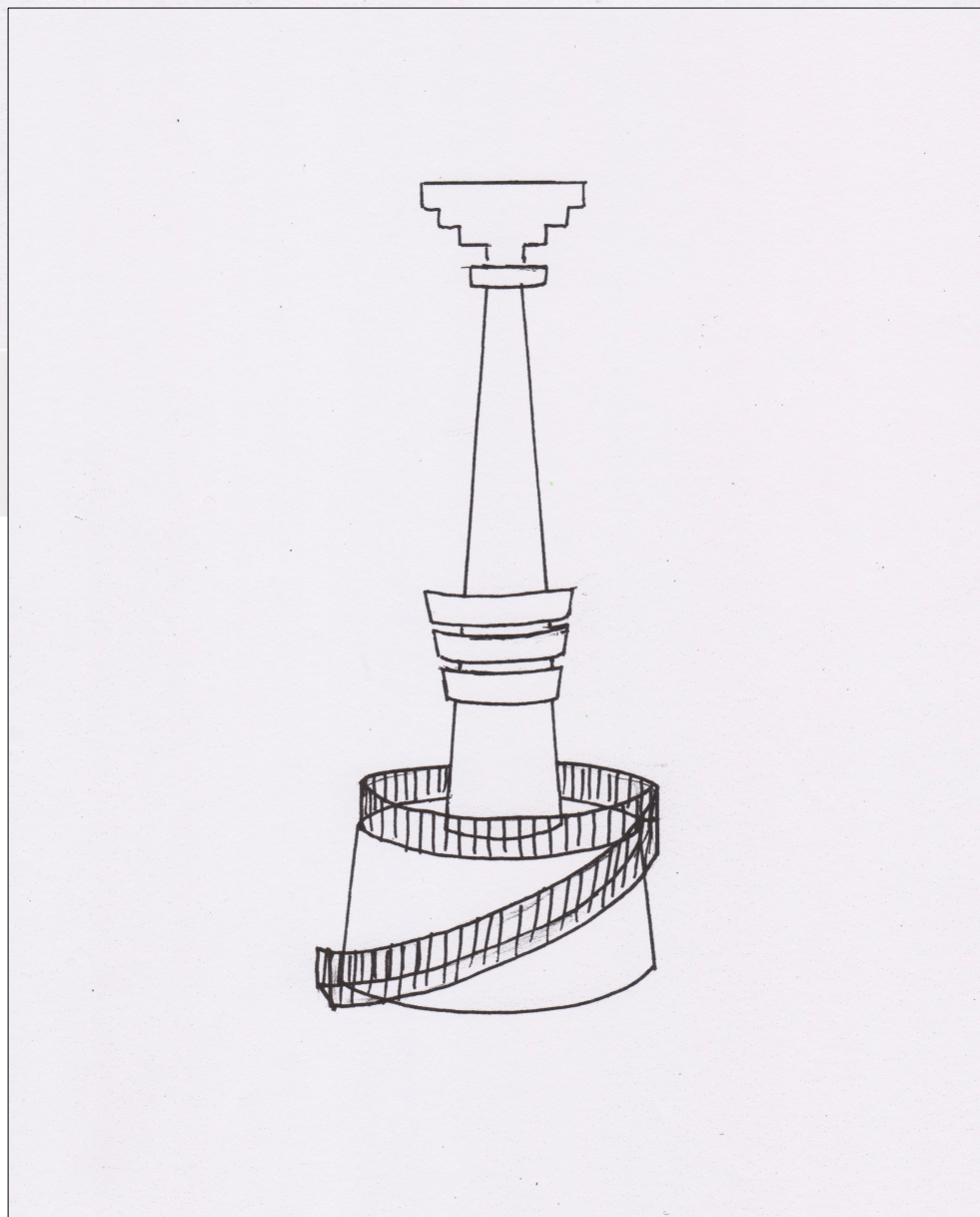
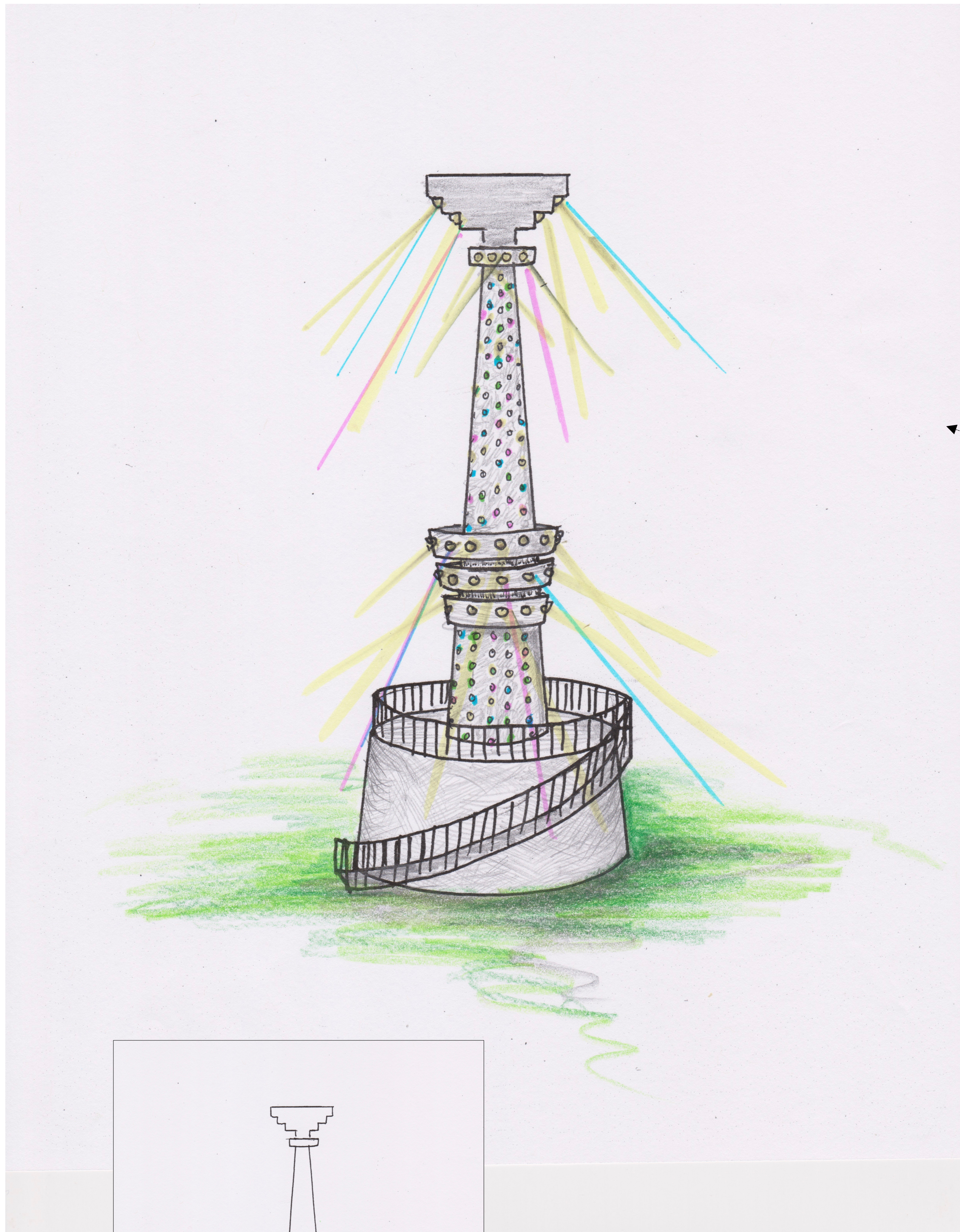
Along the space currently allocated to tennis courts will be an area for rotating food trucks, temporary food booths and farmers' market stalls. In this space running north to south along the Arena Green east side bike trail will be space for 5-10 stalls, booths or trucks providing gourmet, locally-prepared cultural food fare such as tacos, wraps, curries, soups, pasta and rice dishes and other quality items for consumption at the park. A Green Farmer's Market selling fresh, regional produce will be scheduled several times a week.



Net Zero Energy Design Principle Plan

The net zero plan is for the energy involved in this activation of Guadalupe River Park and Arena Green to use renewable sources, principally solar energy. The lights that illuminate The Zocalo Light Tower will also be solar-powered.

Zocalo Light Tower



The Zocalo Light Tower features a 200 foot tower made of shiny brushed stainless steel. The Tower is perforated with multicolored glass and installed with programmable LED lights that illuminate the reflective tower. The colored glass glows both day and night. There is a short spiral walkway up to an observation deck on The Light Tower, 20 feet above the ground.

At the top of the Tower sits a stylized shiny silver eagle paying tribute to the Mexican, Mexican-American, Californios and the U.S. cultural heritage. The stylized eagle shape also represents farming and farmworkers who were largely responsible for the early development of the San Jose/Silicon Valley area, paying tribute to those who worked in the fields. Both the eagle and The Zocalo Light Tower rings revolve and LED spotlights shine on Arena Green below, radiating the colors of the rainbow.

The LED lights entertainingly revolve around The Zocalo Light Tower, colorfully spiraling up and down. The Light Tower, with its circling LED lights, pays tribute to the original Electric Light Tower in San Jose as well as the technology found in Silicon Valley.