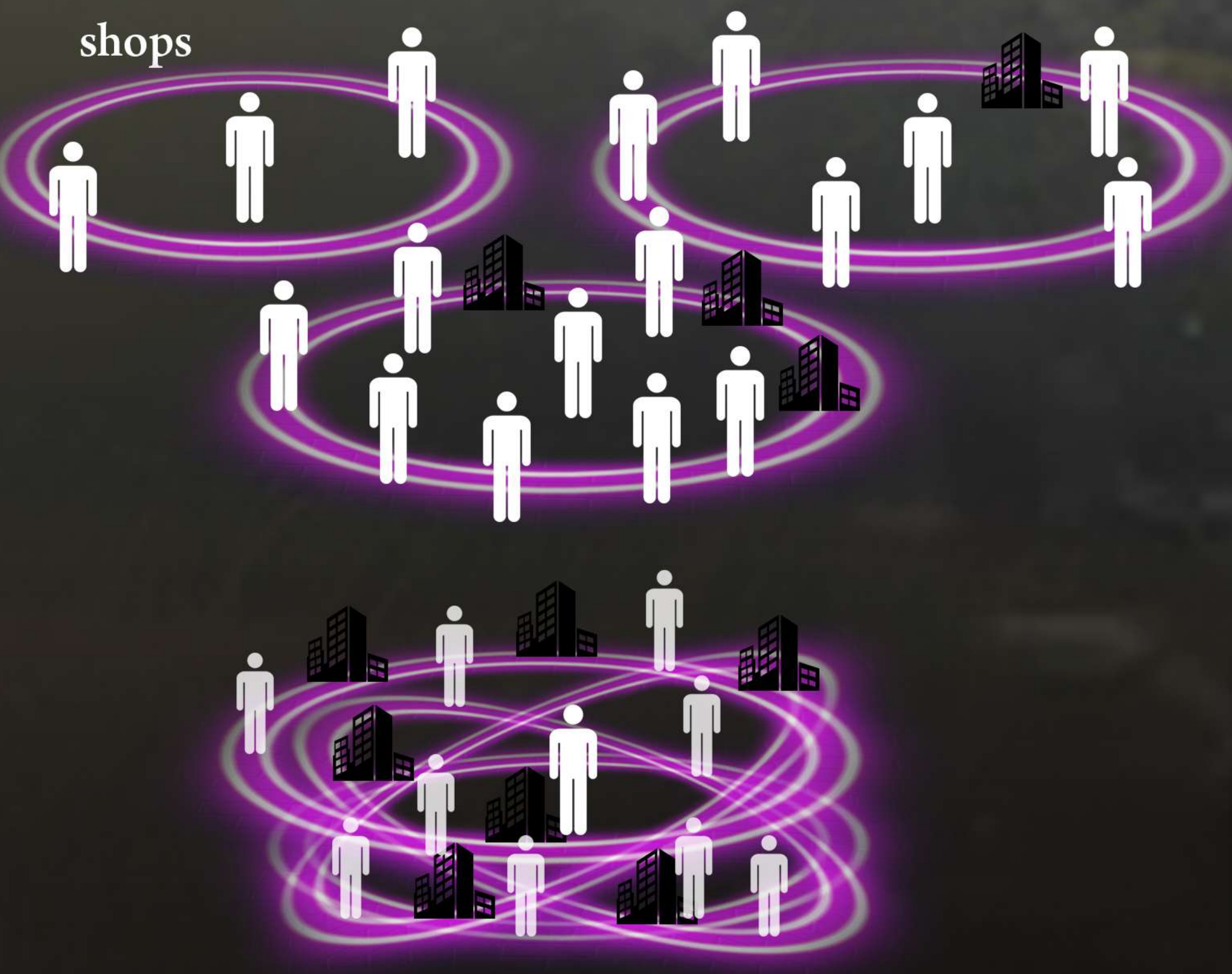


THE ICON OF SAN JOSE- THE VORTEX

The design concept

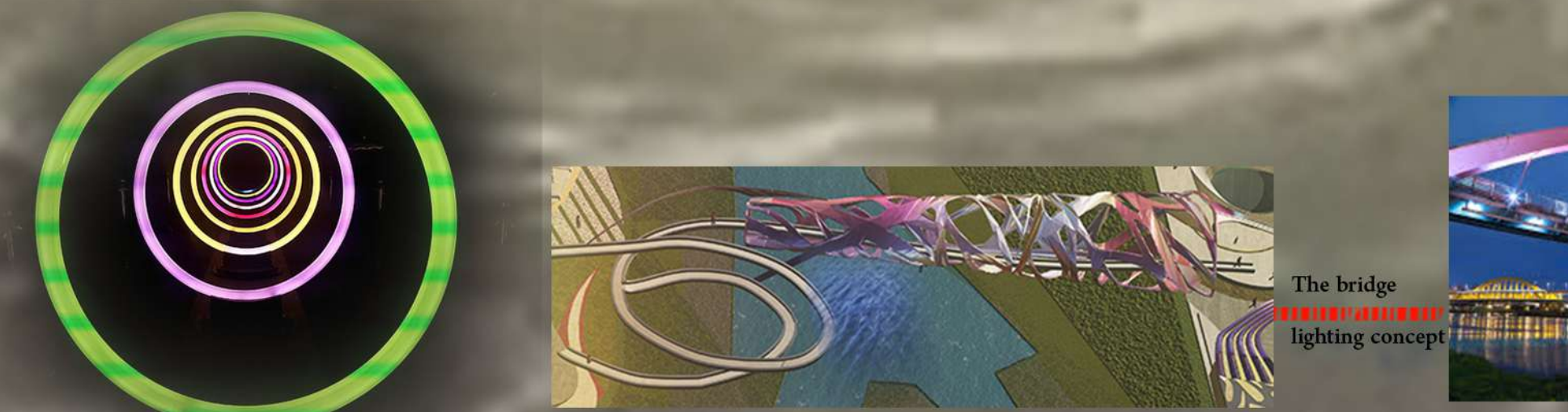
The design idea of the project is inspired by the goal of the project, which is an action that combines the past and the present and presents to the future, and that is clearly achieved through the human life cycle as it contemplates the past and has a present and develops itself for the future and also simulates the light concept and shape for light tower

This is reflected in the project through the use of circles and curves, where a person begins his life and around a circle of trust that is summed up in his parents, then the circle grows with the change of its position with age and reaches friends and some buildings such as the school and then evolves and progress with age and on this basis was designed The different parts of the project where the buildings are formed from different circles, the center to form a formation that simulates human life as reflected by the past and the present through the function of the building. From the building with a large library & workshops



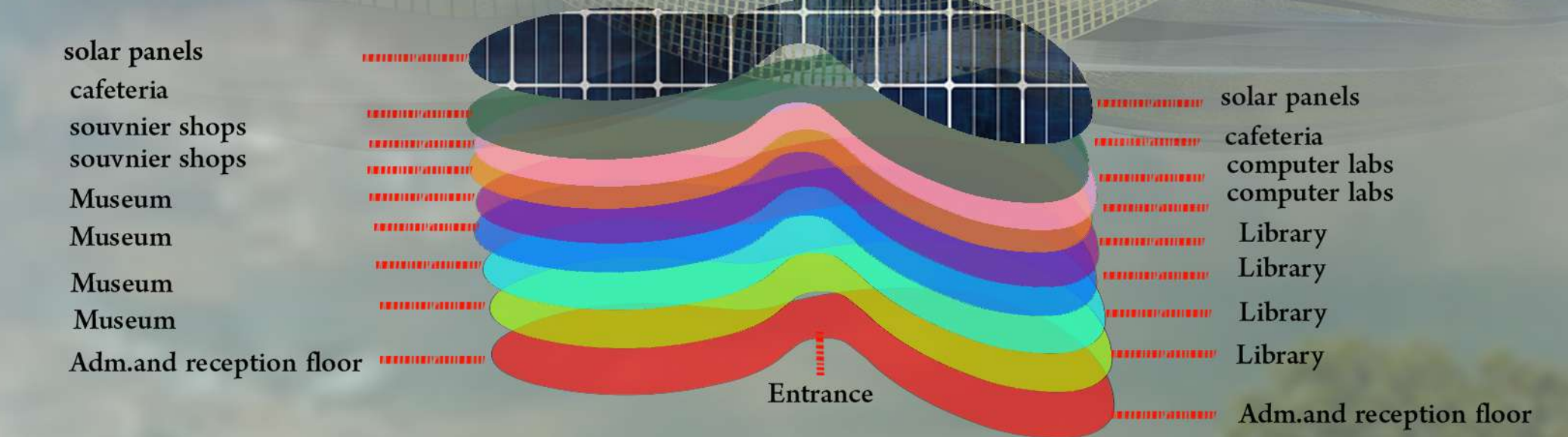
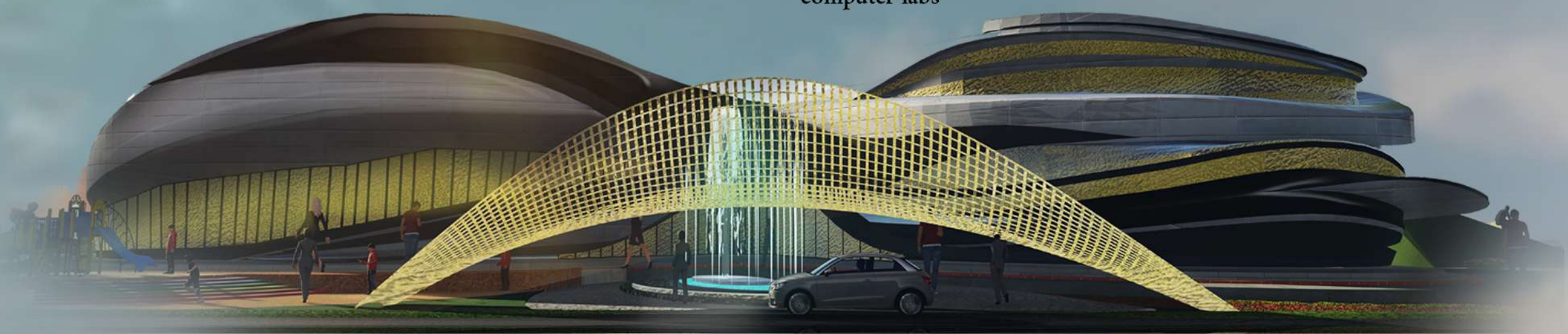
- 1 Main building -Part one :museum
- 2 Main building -Part two :library ,workshops and computer labs
- 3 Entrance 1, The Gate
- 4 seating area for kidzina 1
- 5 kidzina 1
- 6 kidzina 2
- 7 kidzina 3
- 8 Maze
- 9 seating area for kidzina 2
- 10 Gate for the ramp
- 11 five monuments
- 12 observation area with seating
- 13 open theatre
- 14 green area
- 15 kiosks for fast food and drinks
- 16 Resturants
- 17 Adm.building for different compainies branches
- 18 Entrance 2
- 19 open gallery for compines products

The lighting concept will focused on horizontal rings the same concept for lighting tower concept but in horizaontal way using led lights and also lighting materials to avoid any bad effects on envirnmental life

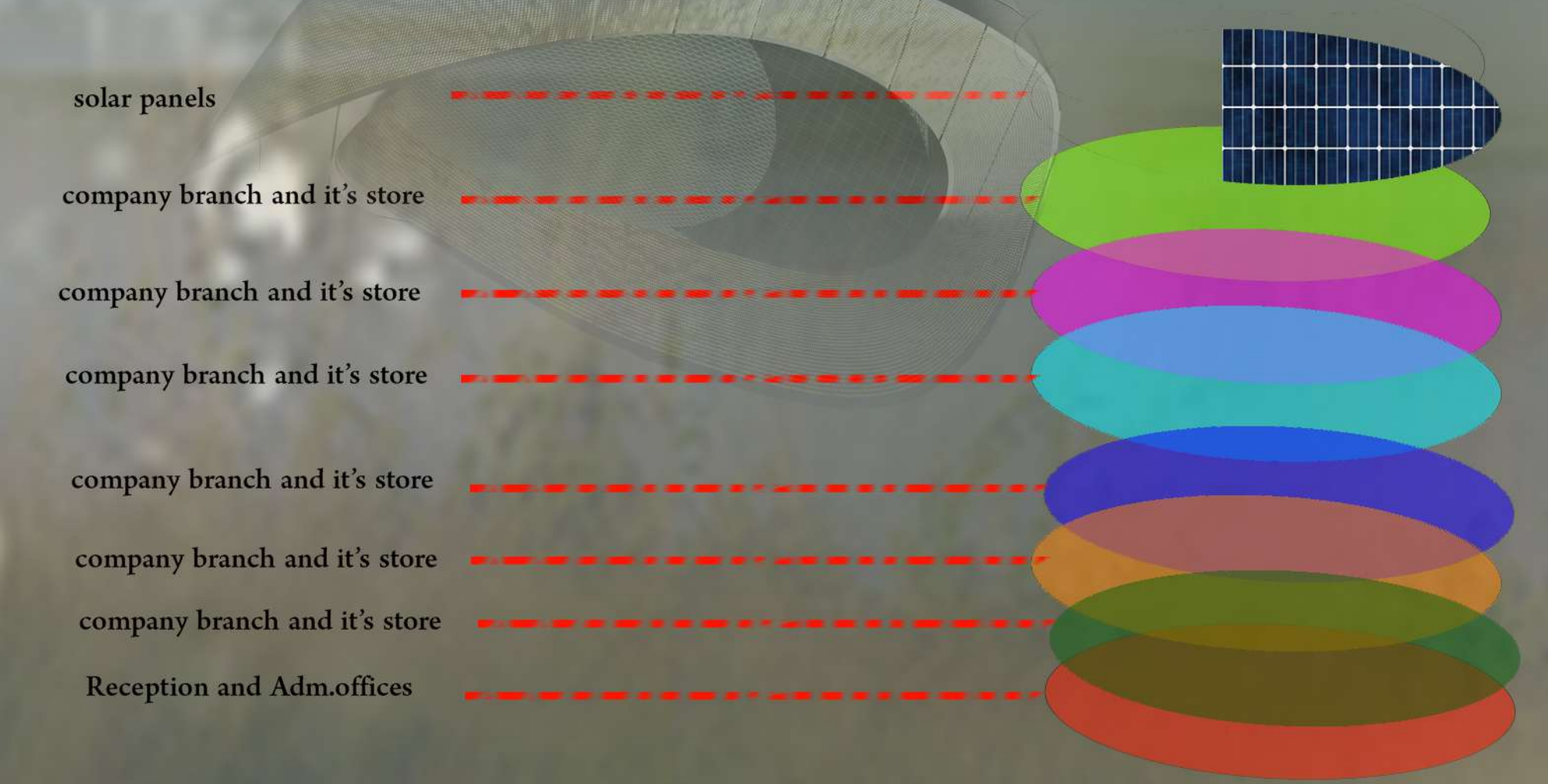
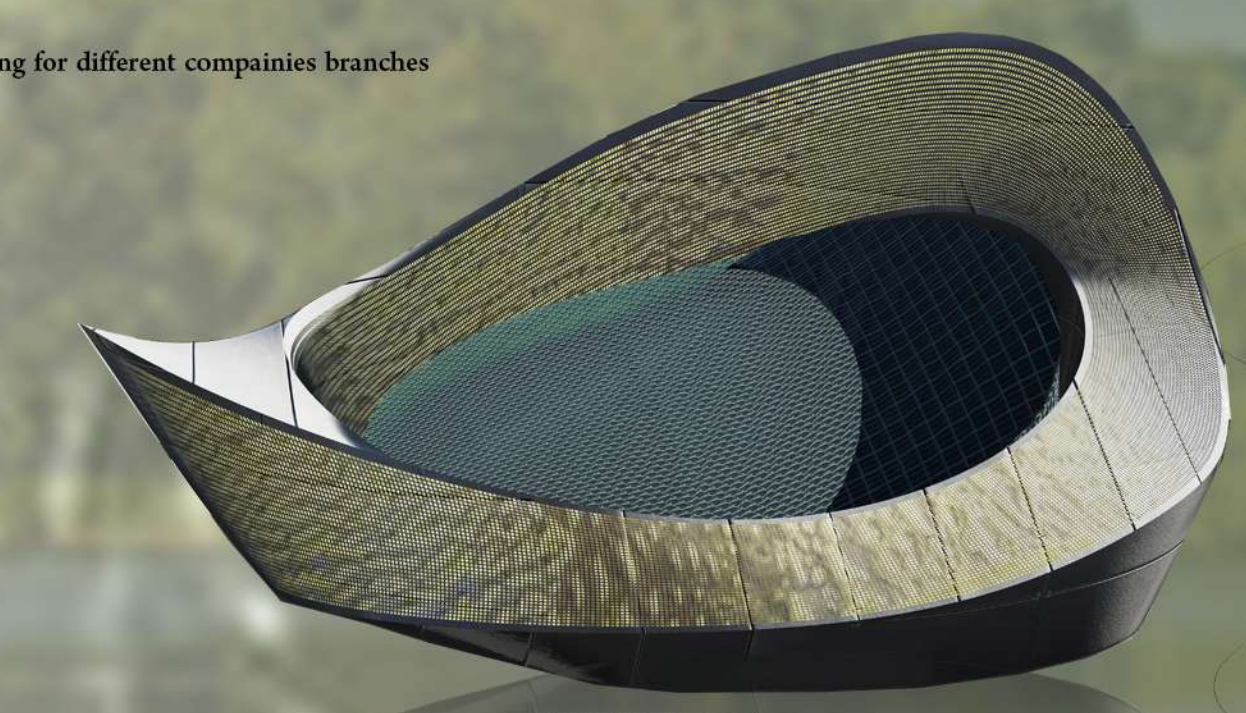


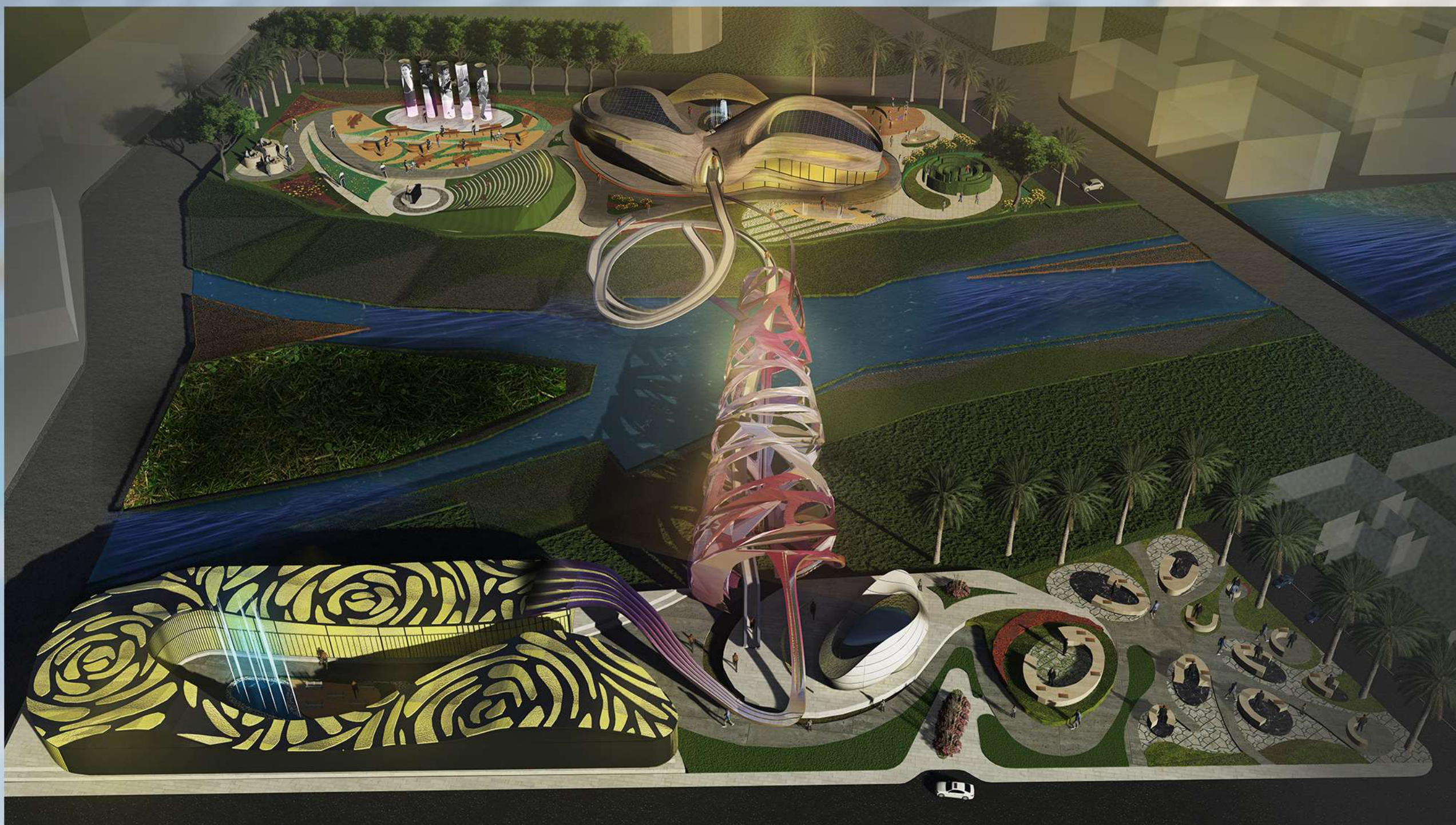
Through the study of the general site, it was found that the project land is surrounded by residential areas and the land of a sports center, so there was a need for the population to ensure the effectiveness of the project throughout the day. The user moves between the past and the present, and through the major, which represents the vortex and difficulties that people face, so it will be a gateway to the future and the financial world where the other land has an administrative building for the most important branch companies in the city and an open exhibition to display all the products of new companies and allows the purchase service also and a complex Restaurants With this, the development triangle between history, contemporary culture, the financial world and technology has been completed

- 1 Main building -Part one :museum
- 2 Main building -Part two :library ,workshops and computer labs

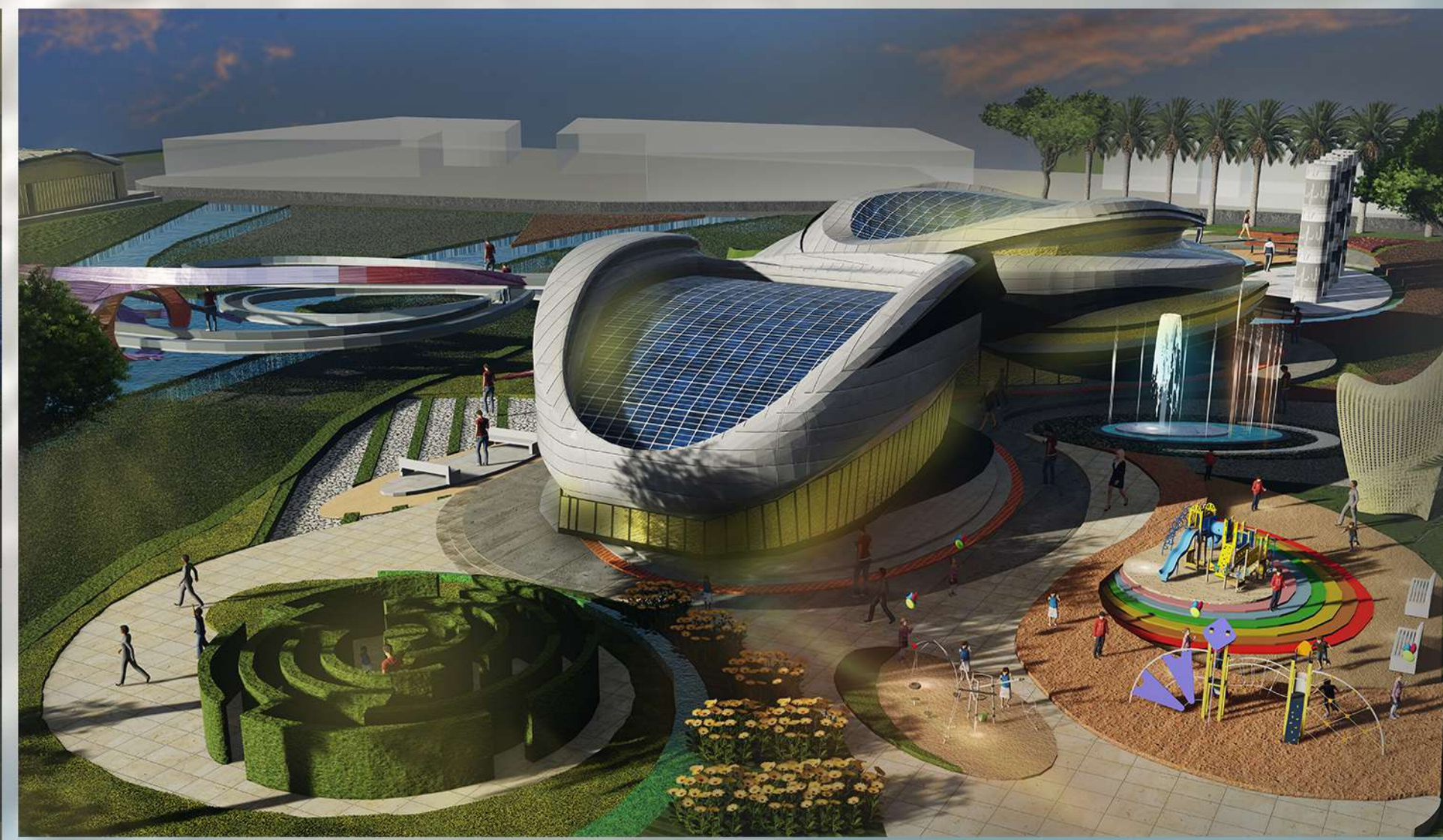


- 17 Adm.building for different compainies branches

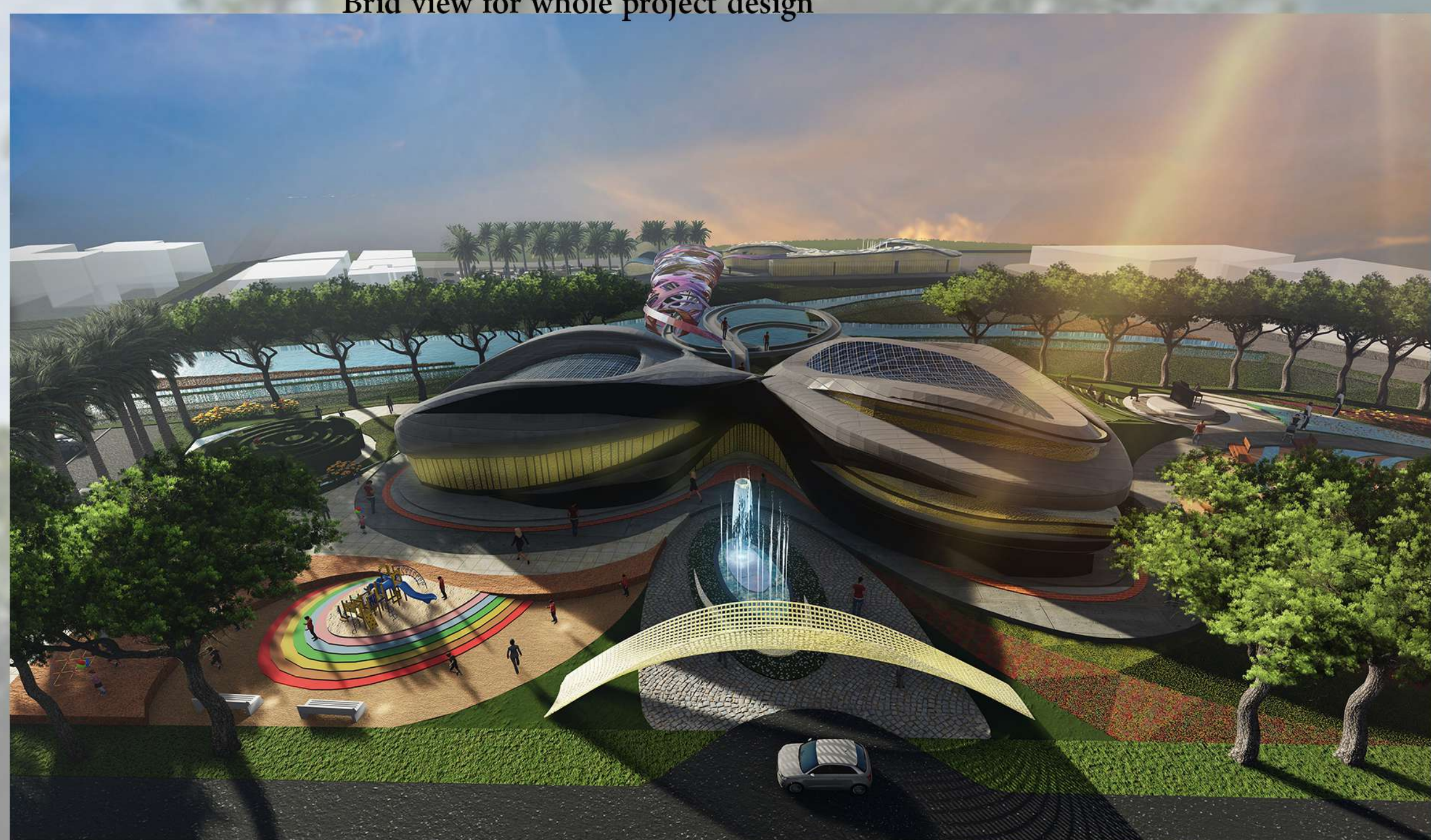
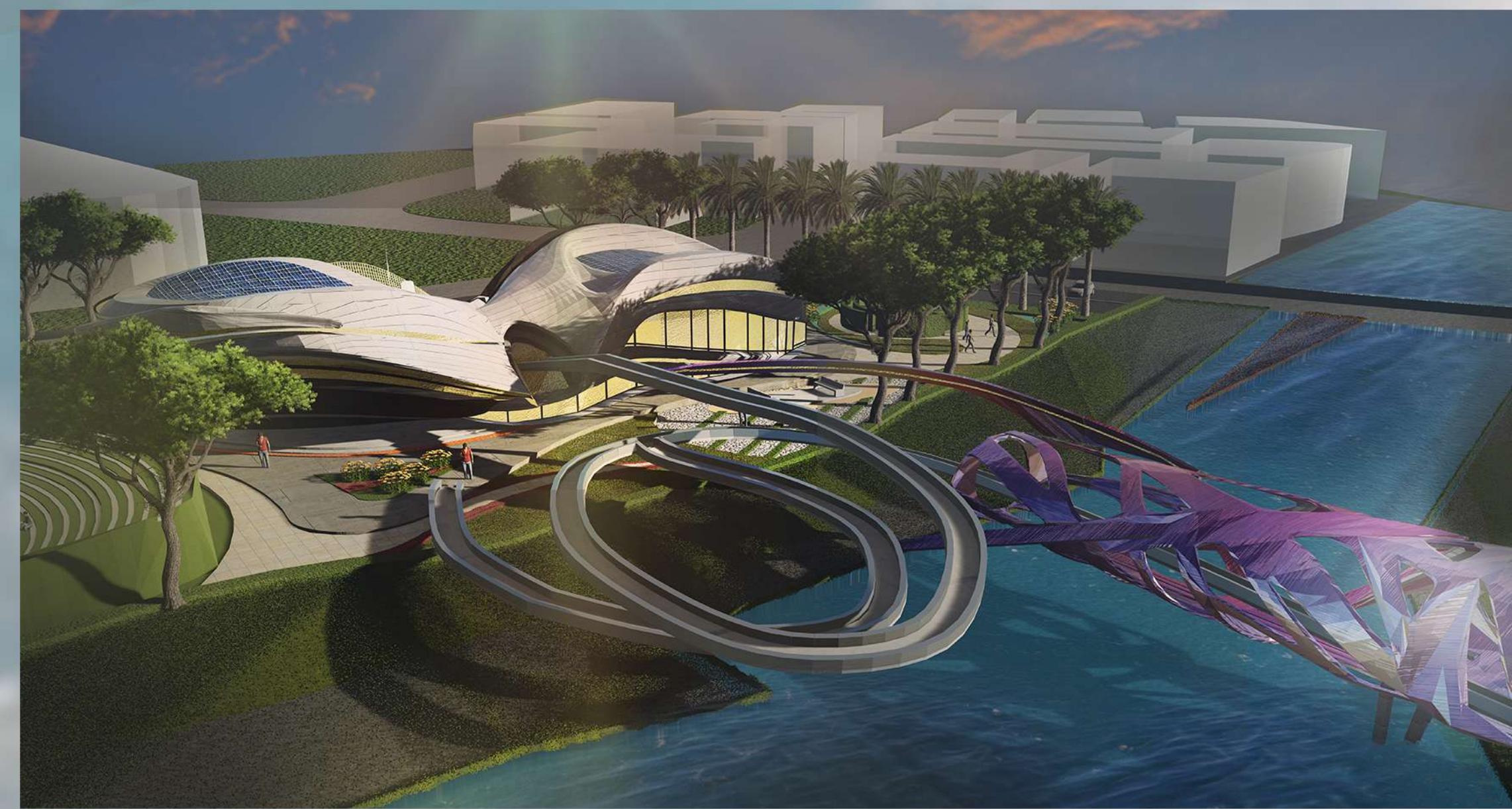
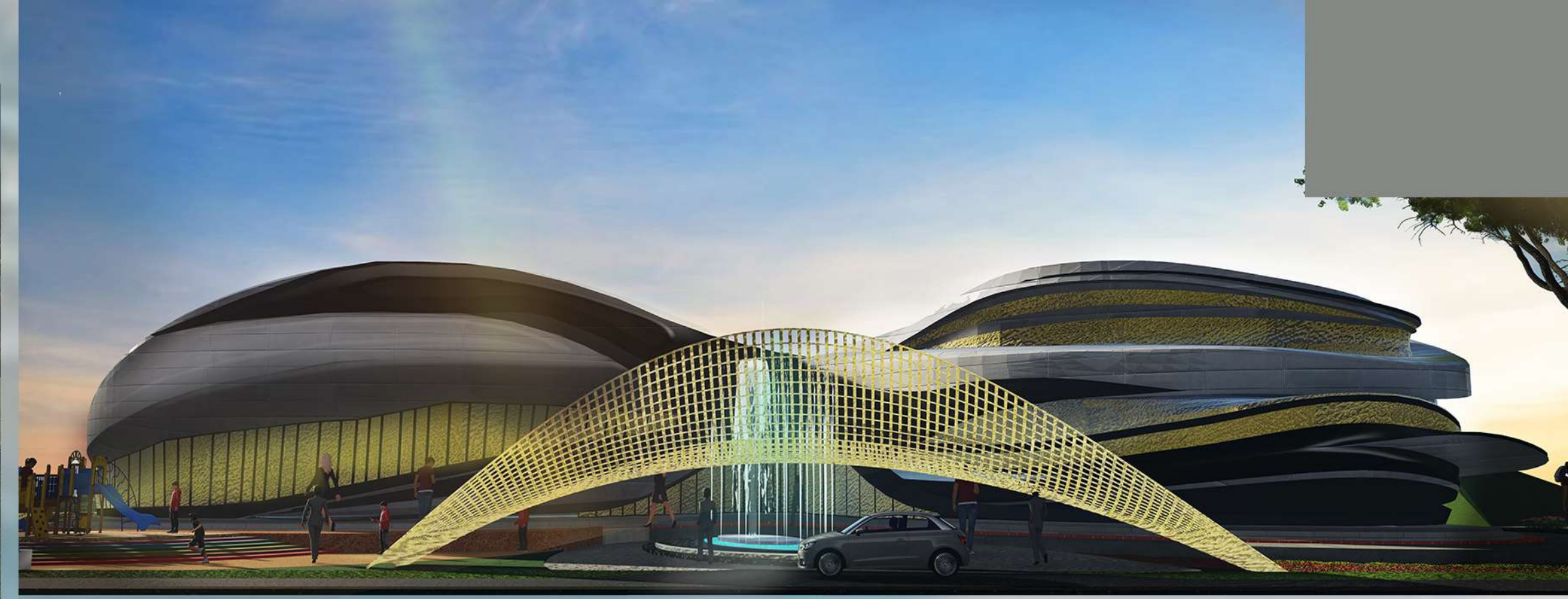




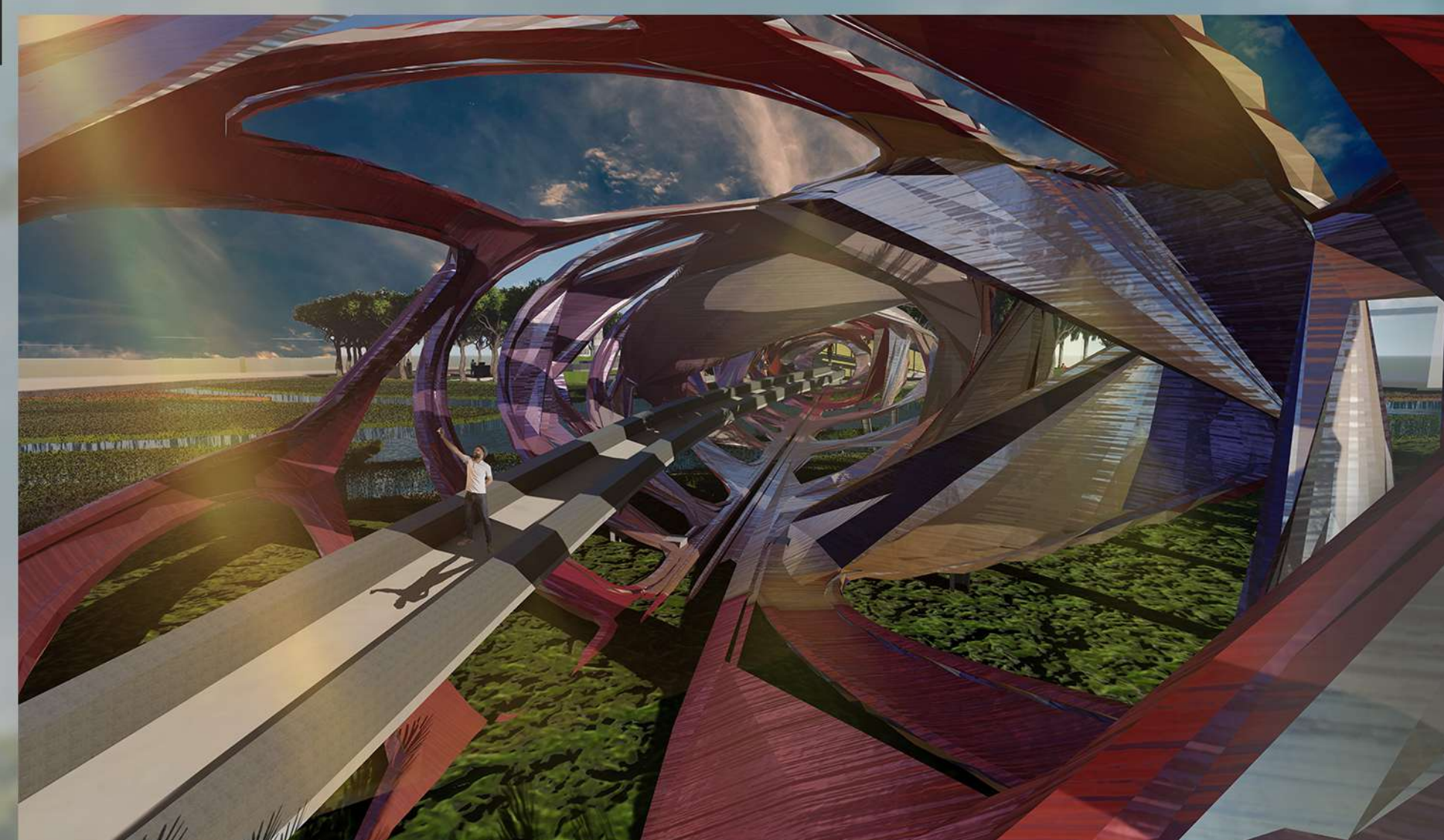
Brid view for whole project design



kidznia with seating area for parents to provide all activities the family need



Main entrance for History and time gate



The gate to the future for bussiness time , the vistor will try new experince through the vortex to move from history , culture time to bussiness and technology



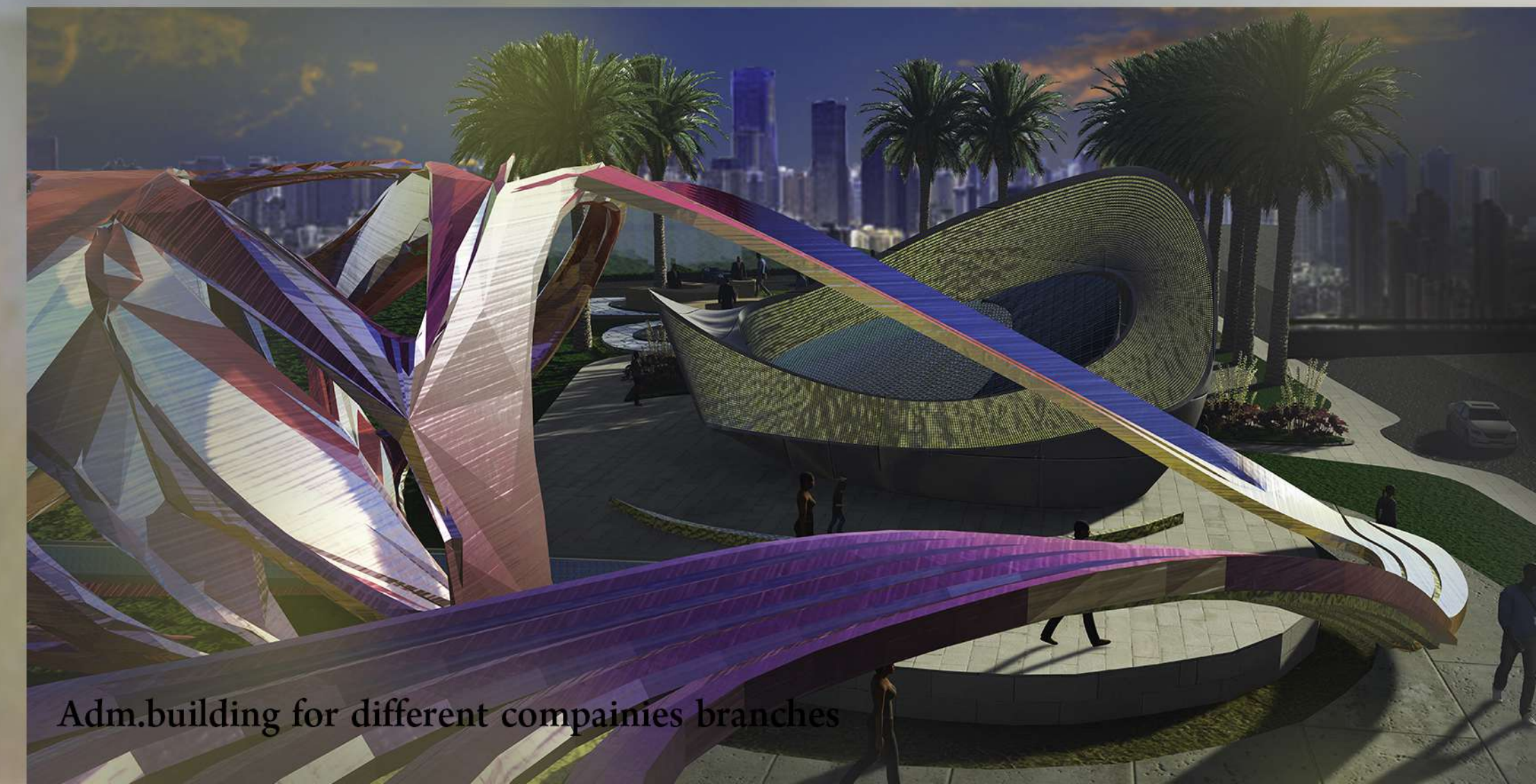
Open Exhibition for different business companies to display all that is new



open theatre and observation point for five monuments



kiosks for vistor's services



Adm. building for different compainies branches