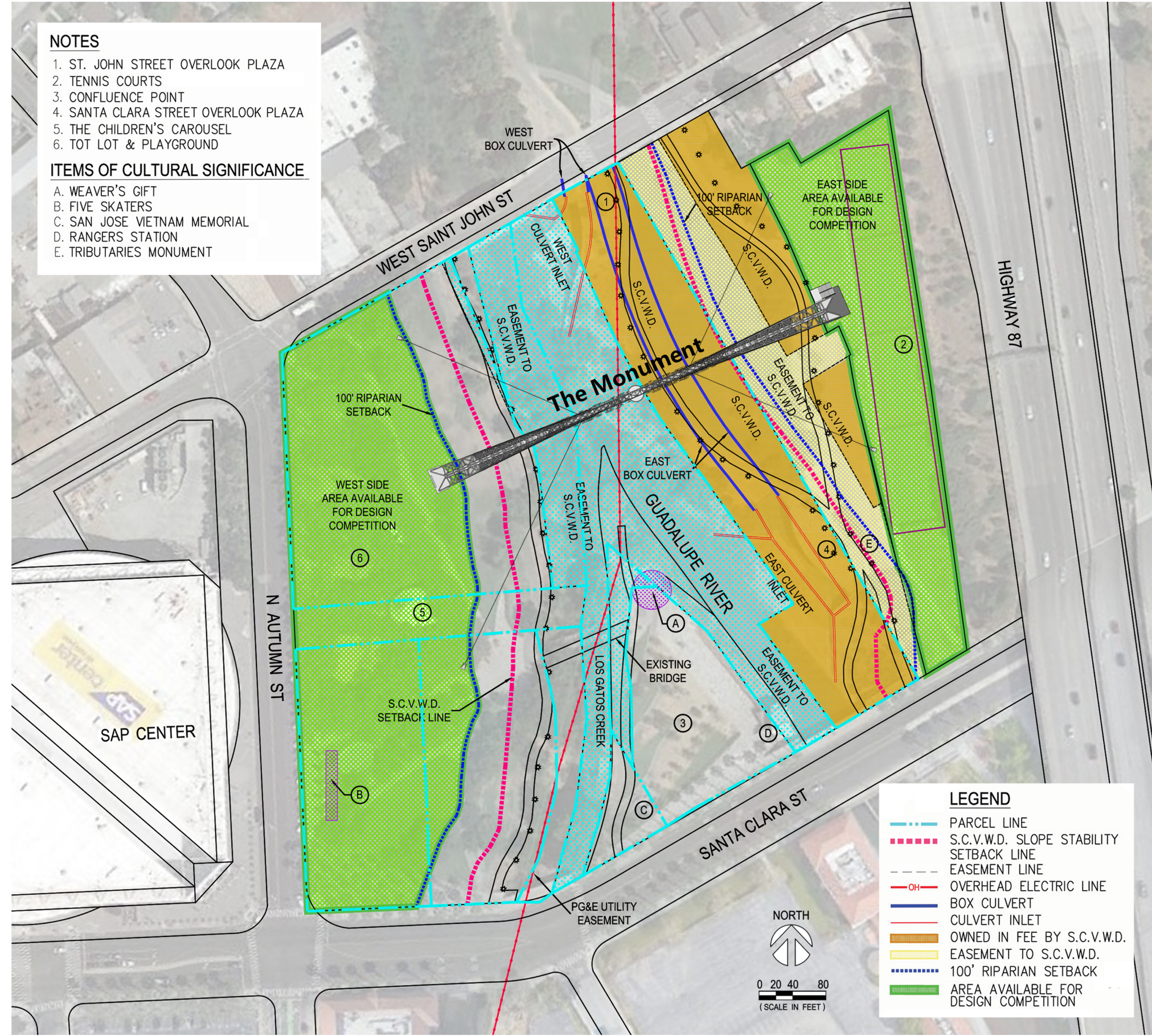


The Monument of Innovation

The monument has an iconic image of "cloud/light bulb" that is composed of many "0" & "1". As we all know, "0100..." is associated with computer and the image of "cloud" can stand for "cloud computing". The more popular consensus is that the image of "light bulb" represents innovation. Therefore, this design conveys Silicon Valley's spirit of innovation in the field of computer technology through symbolic means. To create a unique monument that gives us great visual impact and artistic enjoyment, the "cloud/bulb" is designed to "float" in the air by visually concealing the support structure of the monument.



DESIGN COMPETITION SITE MAP

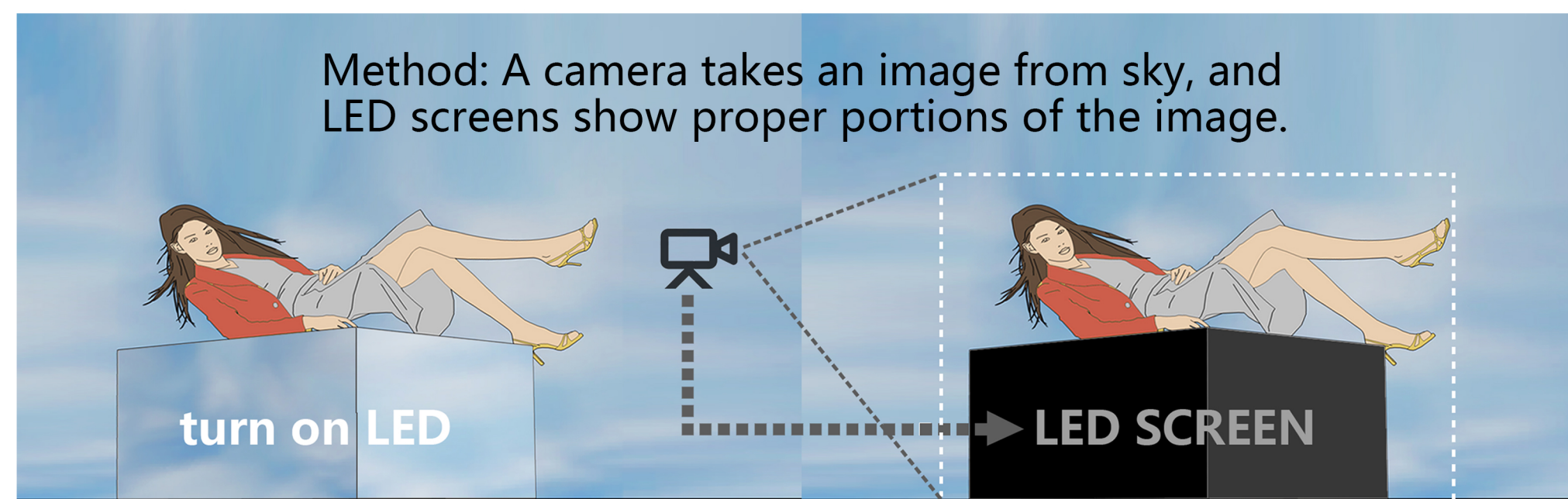


DIAGRAM (making her look floating)

MAZE GARDEN

A maze is designed for children. Its layout is similar to a board of integrated circuit, which brings children's curiosity about computer technology while playing in the maze garden.

PARKING LOT

WALK OF FAME

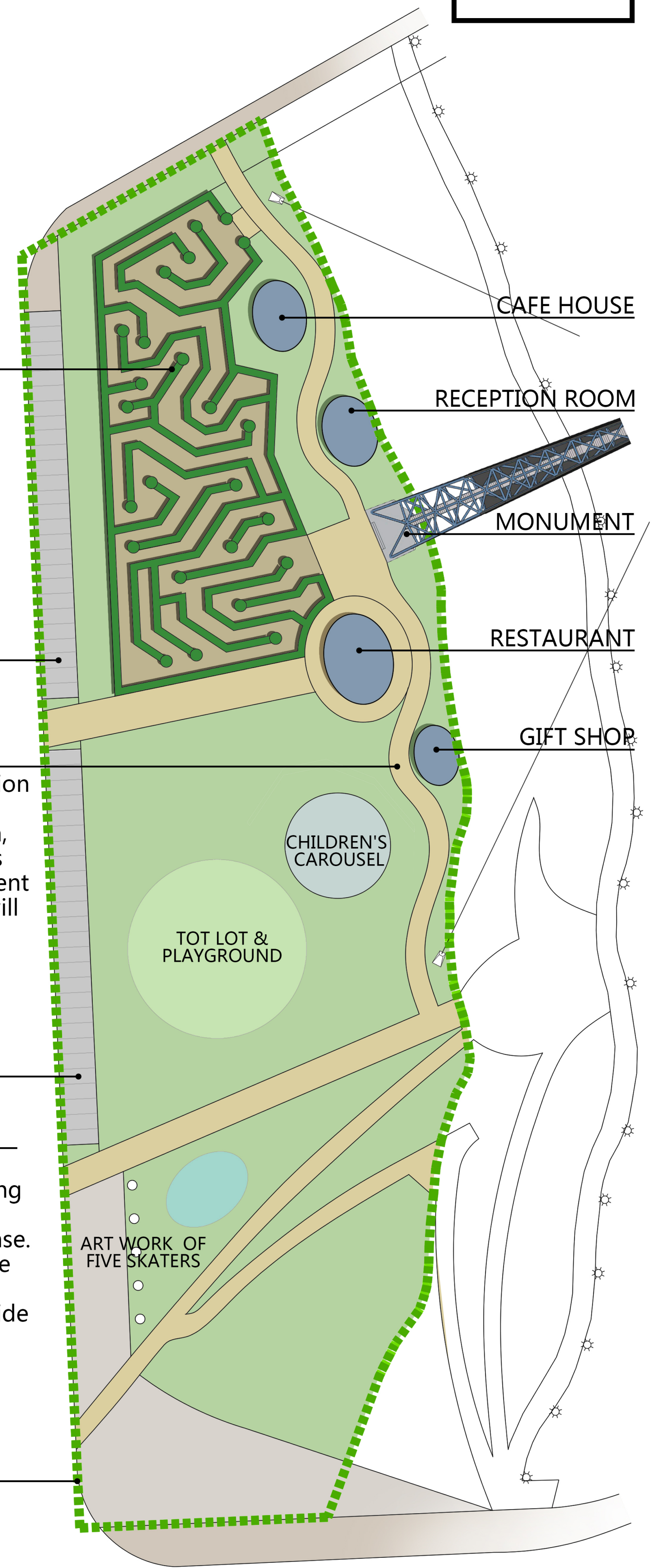
To celebrate the contribution of computer technology gurus, inventors and so on, their names and footprints are molded on the pavement of the "walk fame". This will inspire future generation to follow the pioneers' footprints for exploring new world of technology.

PARKING LOT

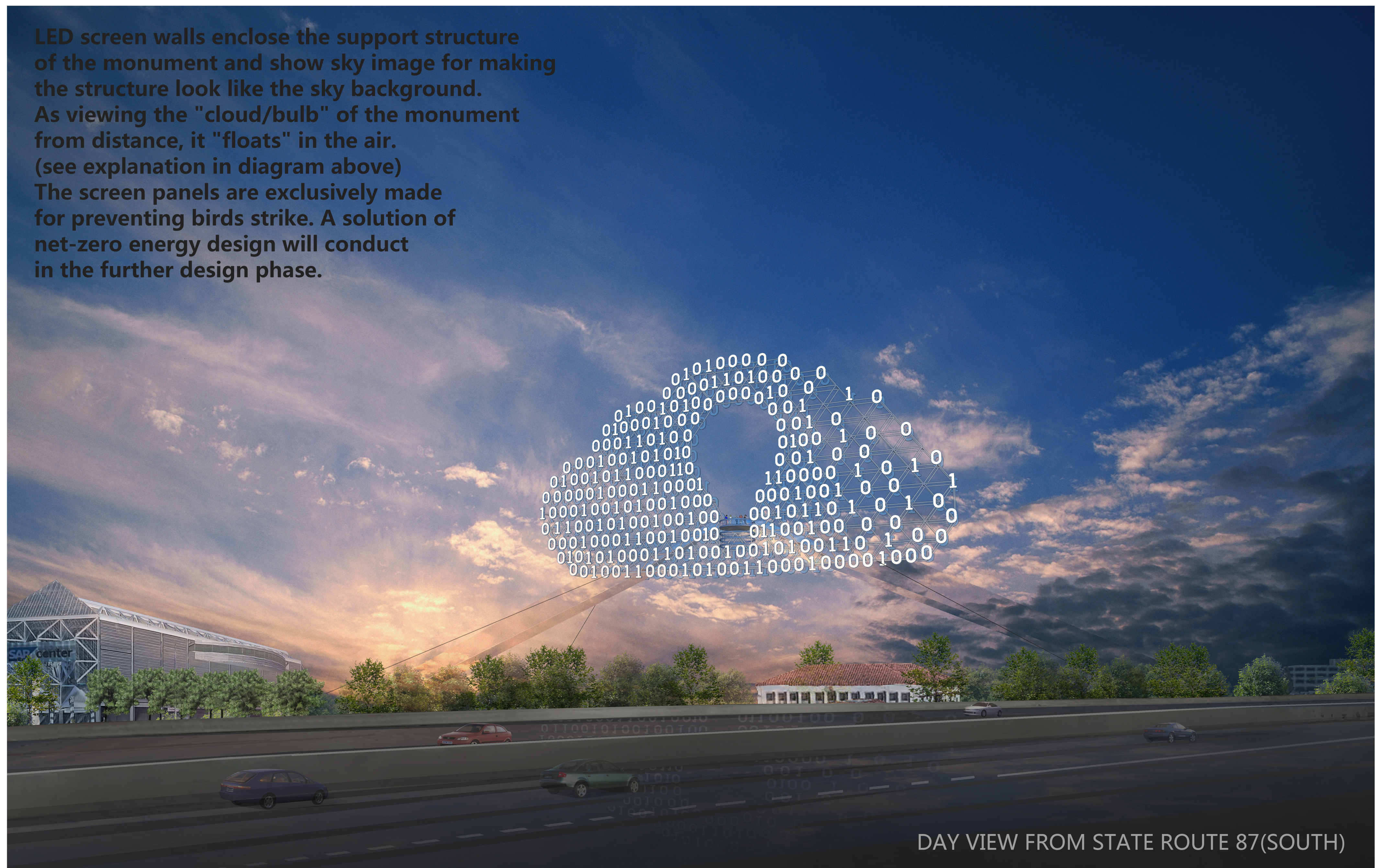
EXISTING SETTING

Modification or relocation (excepting trees) for existing aspects of the site are not needed in this design phase. Trees in the lot of the maze garden can be relocated in the vacant lots of east side area available for design competition.

WEST SIDE AREA AVAILABLE FOR DESIGN COMPETITION

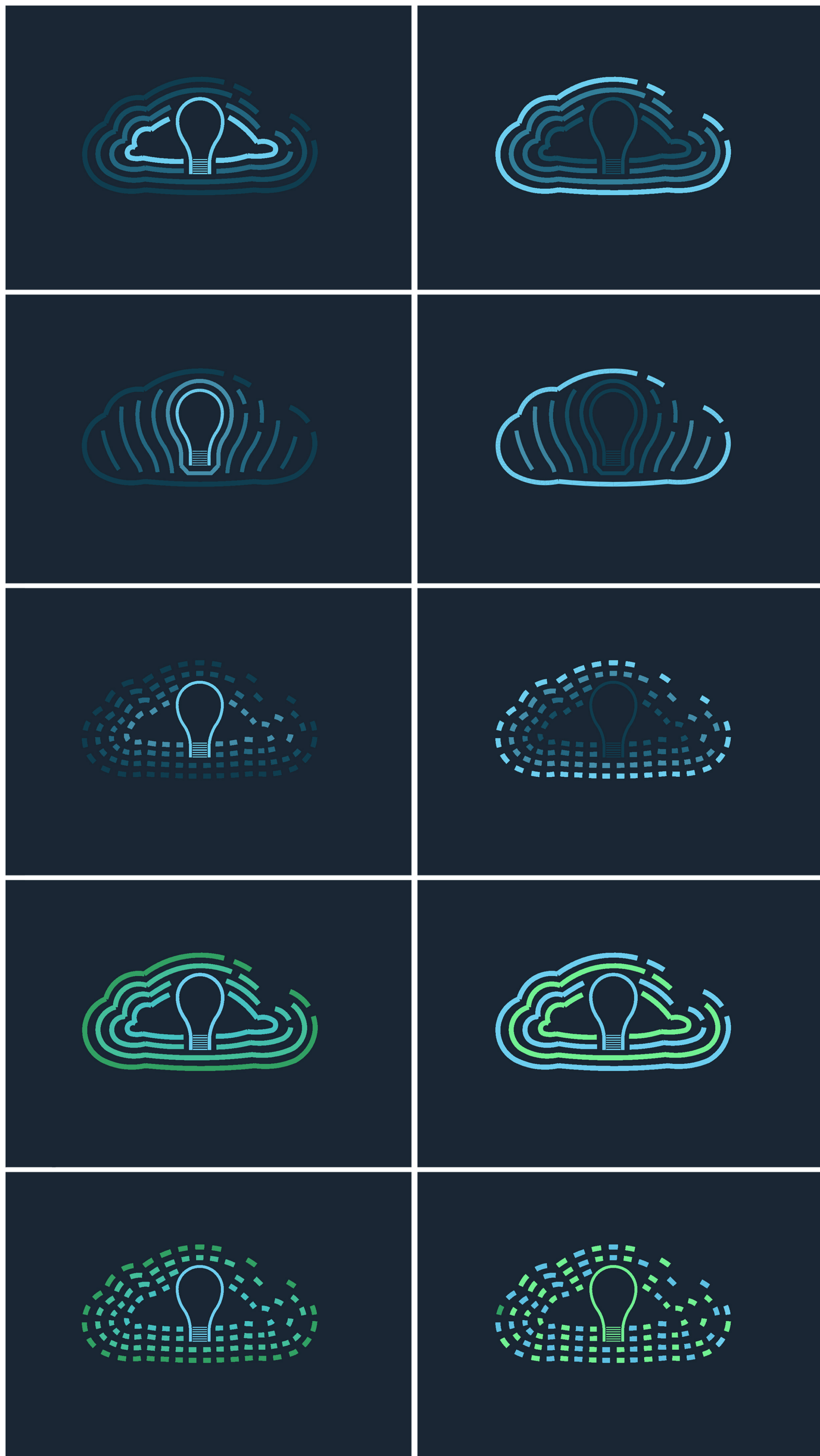


WEST SITE PLAN

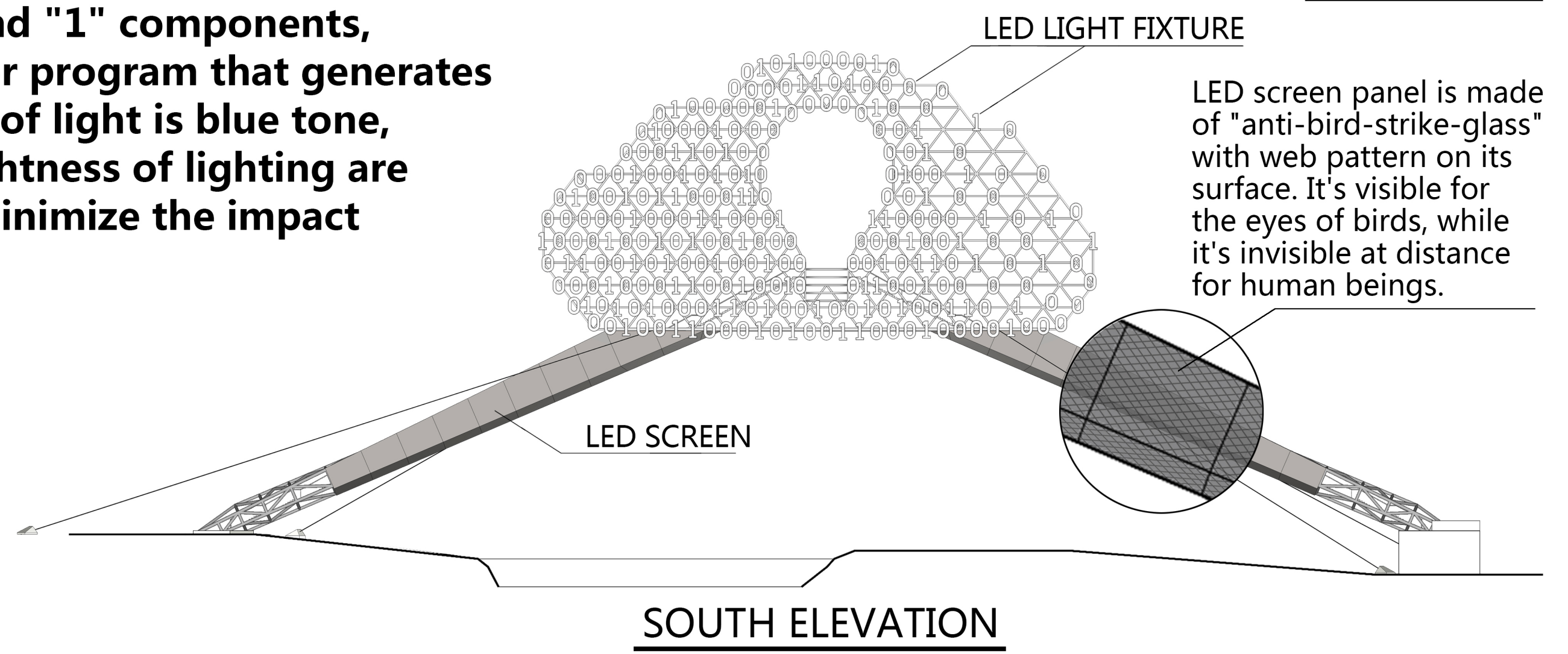


The Monument of Innovation

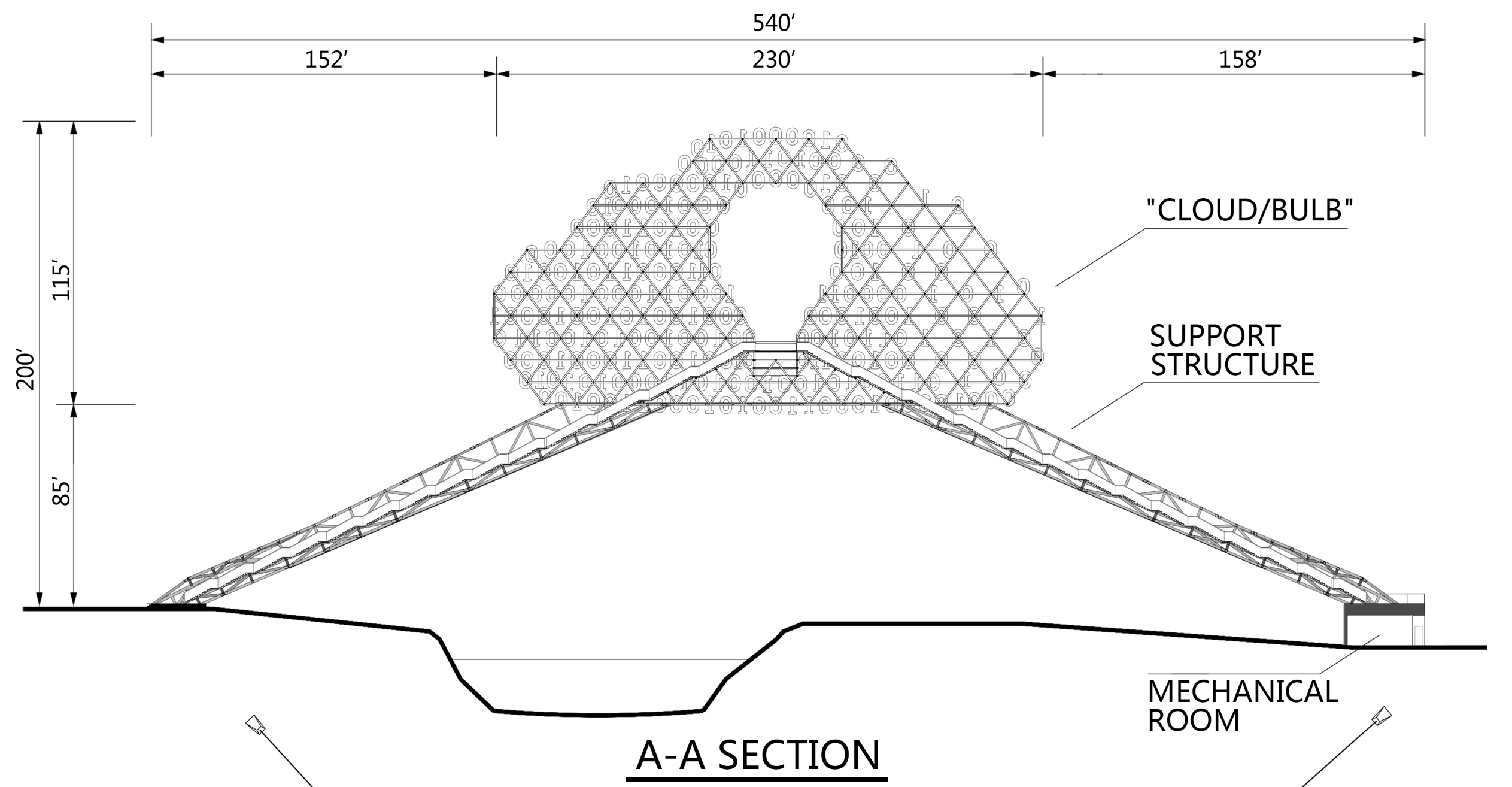
LED lights are installed inside of the boxes of "0" and "1" components, and the lighting effect is controlled by the computer program that generates various patterned lighting modes. The main source of light is blue tone, the lighting mode is dynamic, and the amount/brightness of lighting are controllable. All lighting features are designed to minimize the impact on the surrounding natural environment.



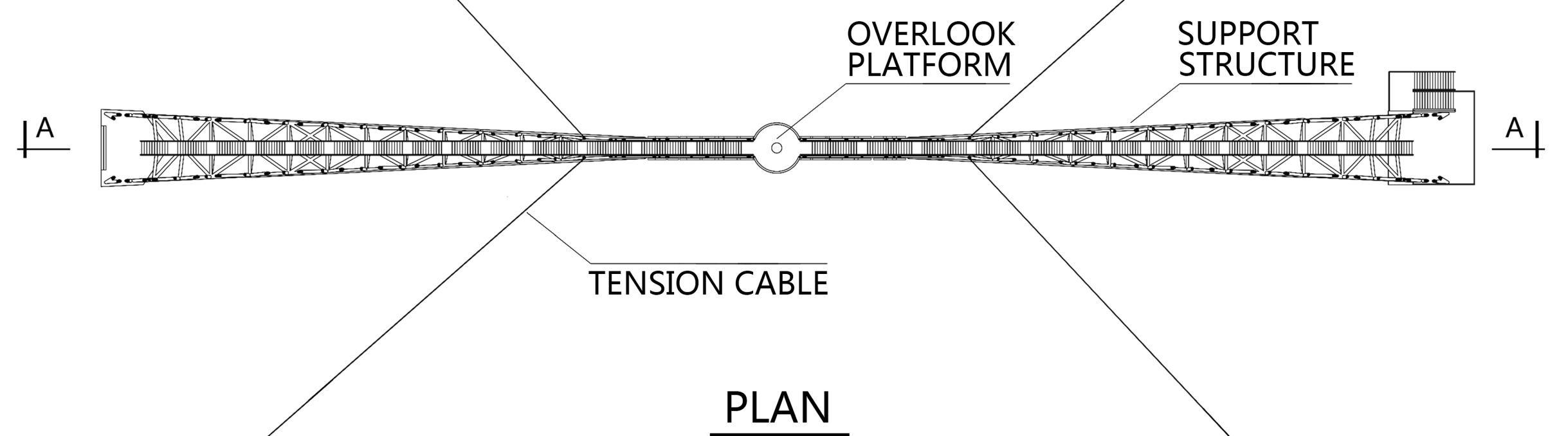
SAMPLE PATTERNS OF LIGHTING



LED screen panel is made of "anti-bird-strike-glass" with web pattern on its surface. It's visible for the eyes of birds, while it's invisible at distance for human beings.

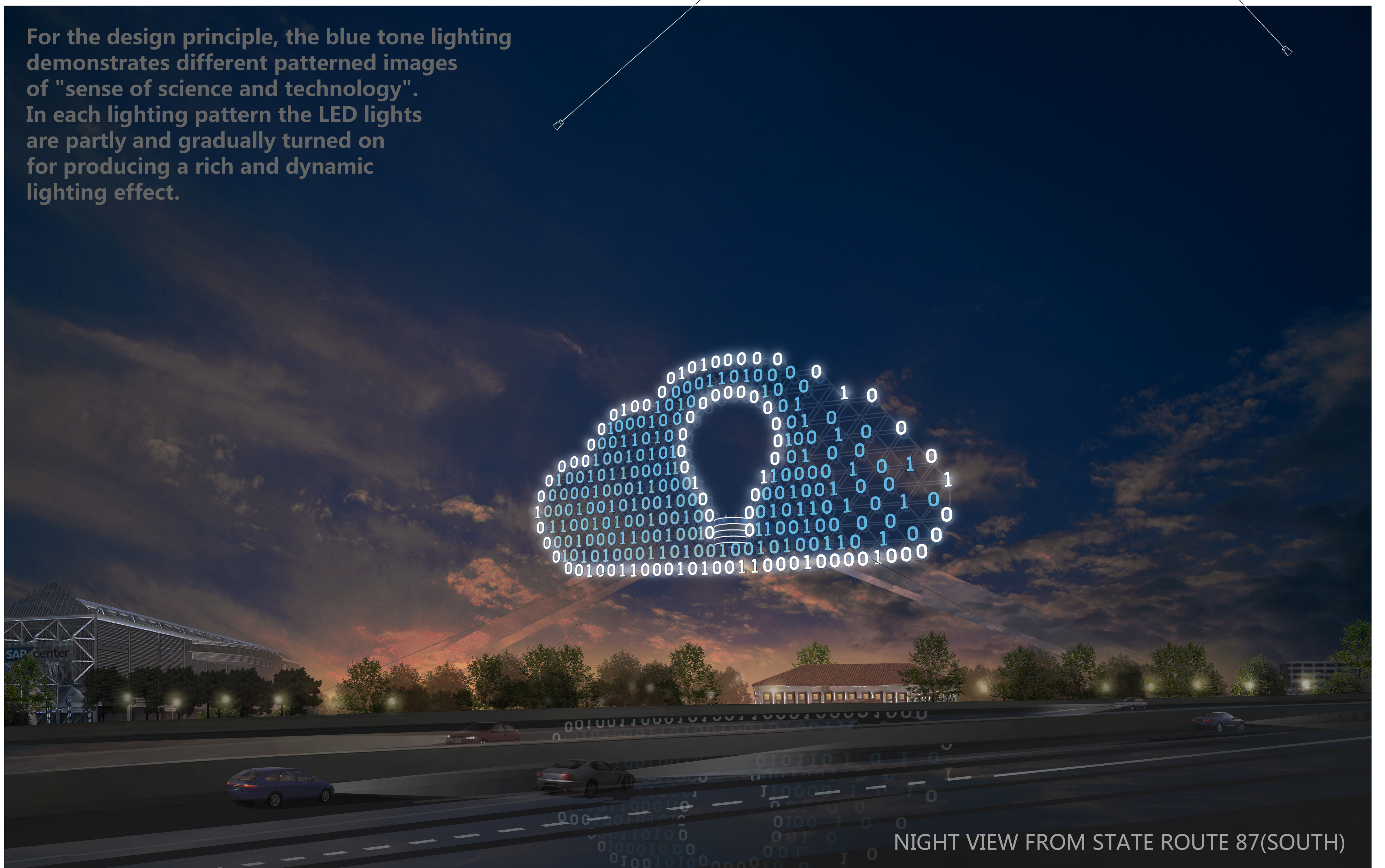


A-A SECTION



PLAN

For the design principle, the blue tone lighting demonstrates different patterned images of "sense of science and technology". In each lighting pattern the LED lights are partly and gradually turned on for producing a rich and dynamic lighting effect.



NIGHT VIEW FROM STATE ROUTE 87(SOUTH)