

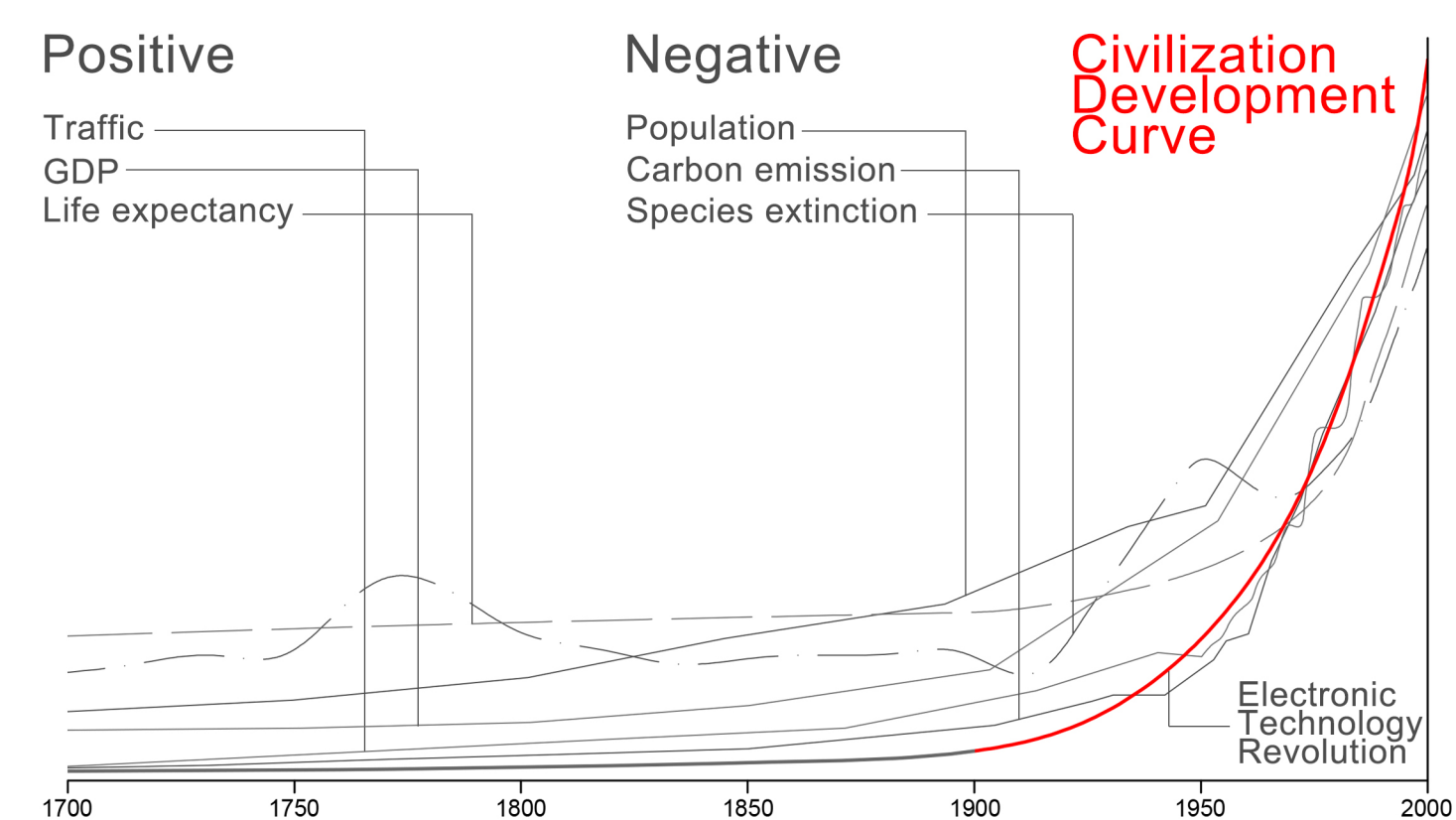
THE RISE

Silicon Valley's contribution to humanity lies not in a bunch of inventions, but in the fact that the collection of these inventions has changed the trend of human civilization development curve from linear development to exponential growth.

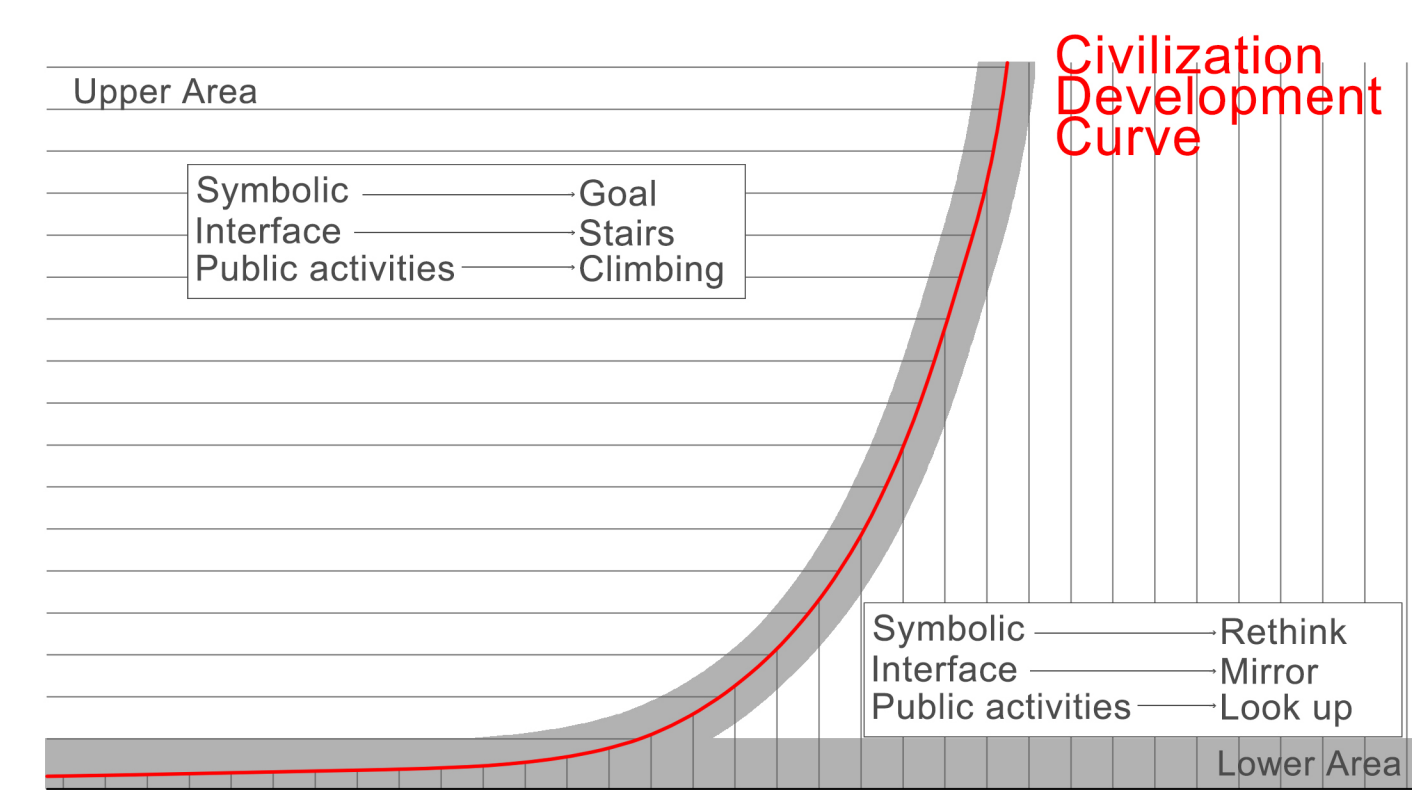
In this case, We commemorate this trend by building an unprecedented structure to commemorate Silicon Valley's contribution to humanity.

This geometric trend has both positive and negative sides to the world. The positive side encourages us to climb the peak of technology, and the negative side lets us to rethink of the impact of technology on the environment.

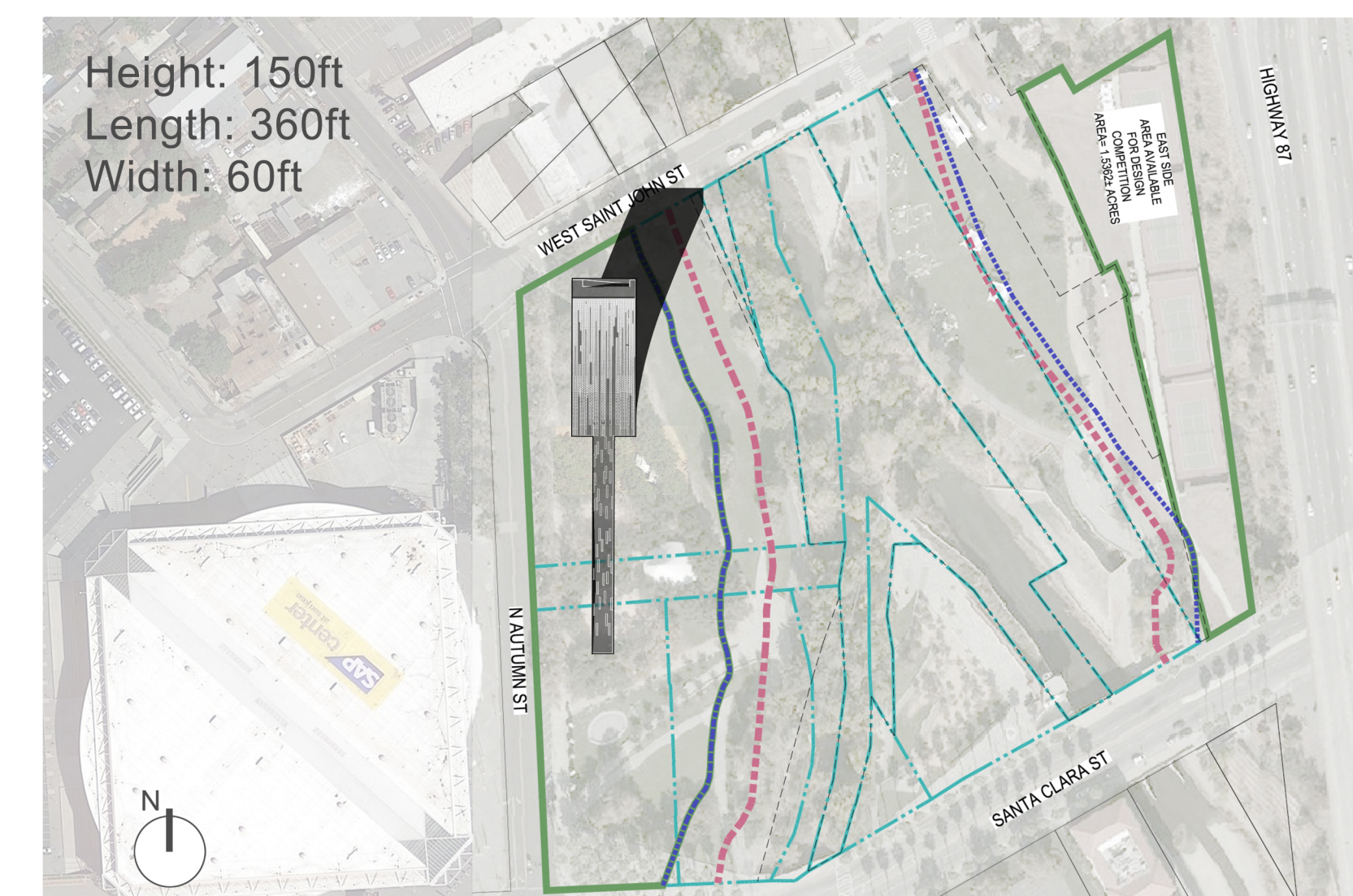
This two-sidedness is expressed by space through the two sides of the monument. One side is stairs for people to climb, and another side is a mirror that reflects light information of Eco on the ground.



The biggest contribution that Silicon Valley brings to humanity is that the information technology revolution led by Silicon Valley has changed the curve trend of human civilization from linear growth to exponential growth.



The curve itself becomes more symbolic because of the two sides of civilization. The upper area of the curve is the area that civilization has not touched, which means goal. The lower area of the curve is the field that civilization has completed,





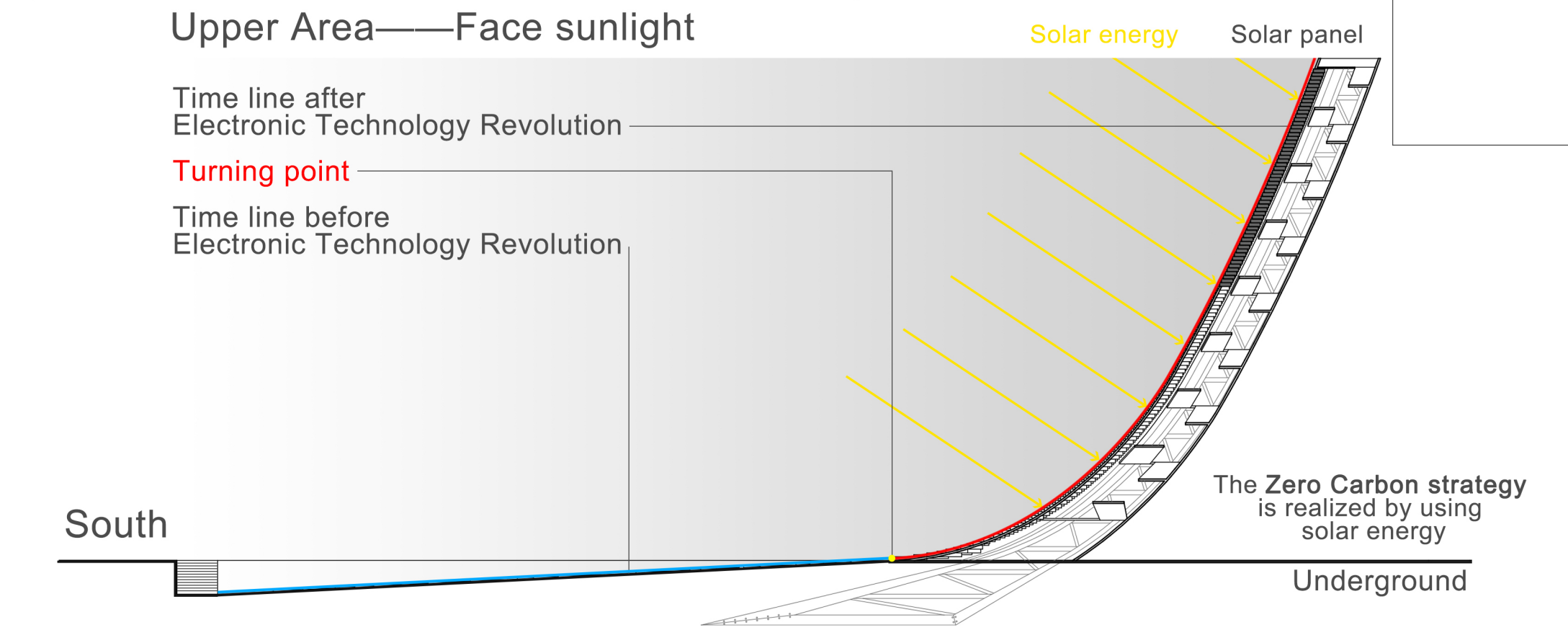
Front — Goal & Climbing

Upper Area — Face sunlight

Time line after Electronic Technology Revolution

Turning point

Time line before Electronic Technology Revolution



The streamline begins with a underground path that represents the time before the development of electronic technology, when the road reaches the ground, it becomes a curve, which represents the rapid development of electronic technology and the Silicon Valley.



Exterior

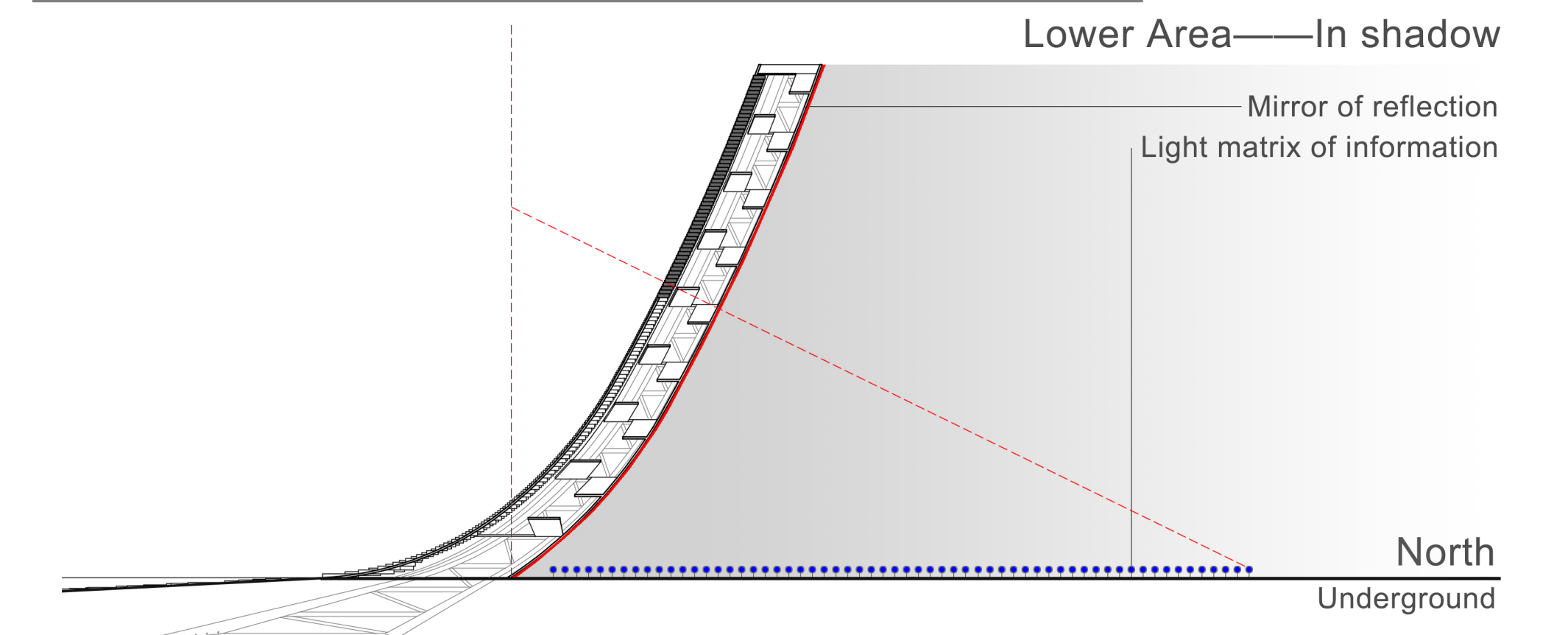
- Each time capsule is a step on the curved slope.
- Solar panels are installed on the surface to generate electricity for the building
- Each time capsule has the name mark of one invention by Silicon Valley companies.
- Citizens can use these time capsules as stairs or seats to climb the slope or rest.
- At night, these time capsules together form a digital waterfall and forming a light show.



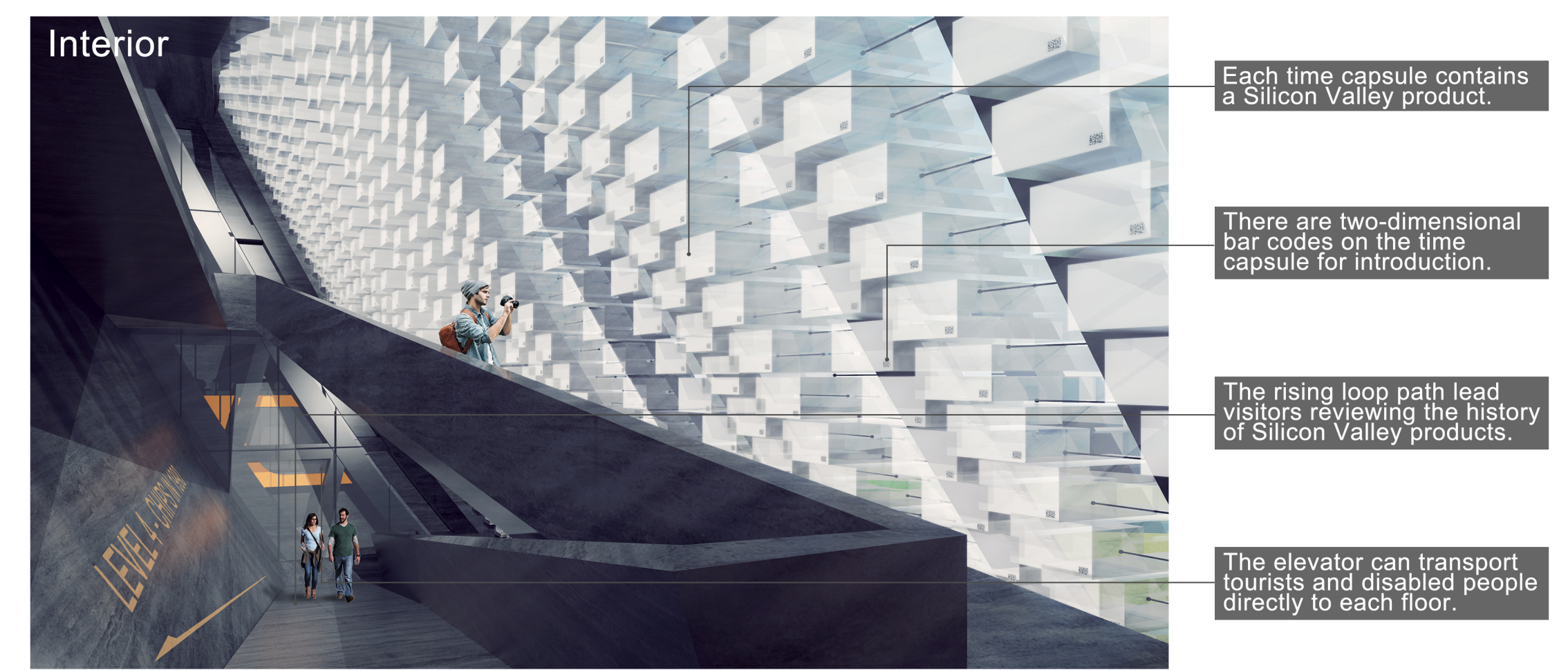
Back — Self-examination & Mirror

Lower Area — In shadow

Mirror of reflection
Light matrix of information



The light matrix on the ground shows the real-time information of the earth, such as the distribution of green plants, temperature, or global light distribution at night. These informations are transformed into a virtual monument by the mirror of reflection.



Interior

- Each time capsule contains a Silicon Valley product.
- There are two-dimensional bar codes on the time capsule for introduction.
- The rising loop path lead visitors reviewing the history of Silicon Valley products.
- The elevator can transport tourists and disabled people directly to each floor.