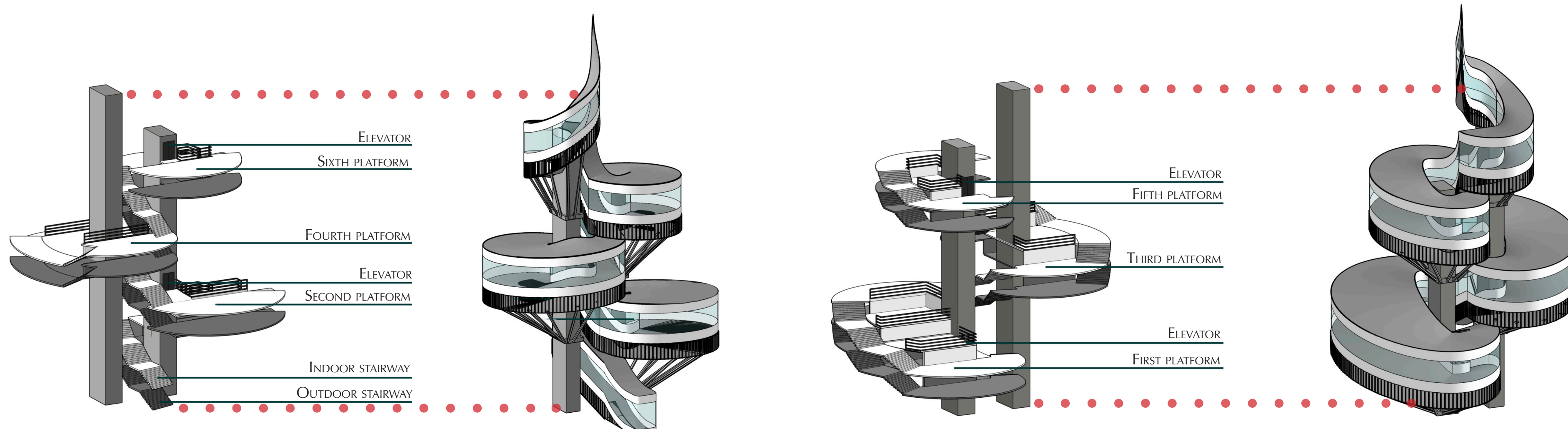
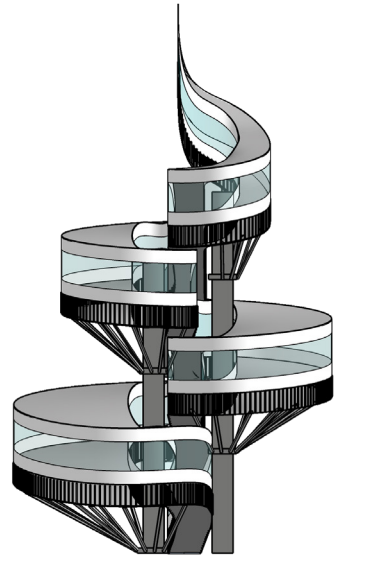
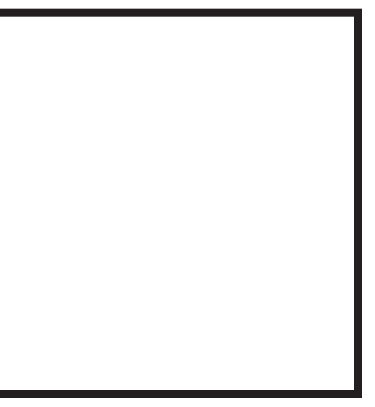


INFLECTION TOWER

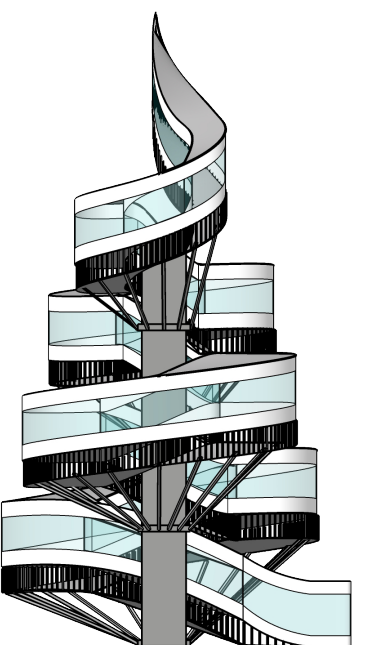
Standing at 200 feet tall, the monument has six large viewing platforms with smaller platforms in between that will allow visitors to have a full panoramic view of the Bay Area. The monument has both indoor and outdoor walkways for visitors to take to the top, where they can view the city at their leisure. The monument comes to life at night when the interior is lit up by LED lights, interchangeable each night to reflect the city's initiative. The interior will be the only part of the monument lit, and at night will appear to be a floating ribbon that defies gravity.



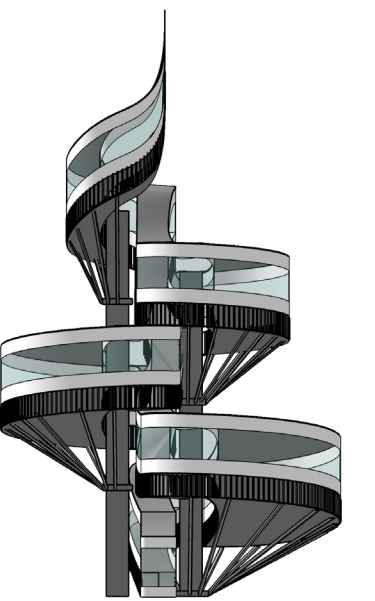
*NET ZERO APPROACH: Green roofs, native plants and trees, and solar panels will be incorporated into the design. The sun will be the most important source of energy and the glass windows will allow a natural heating system. There will be open windows and doors to allow circulation from the indoor walkway to the outdoor walkway to allow natural ventilation. Only sustainable materials are envisioned to create and maintain the space.



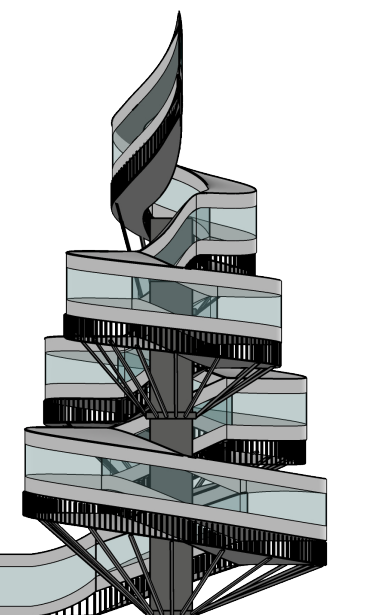
Front elevation



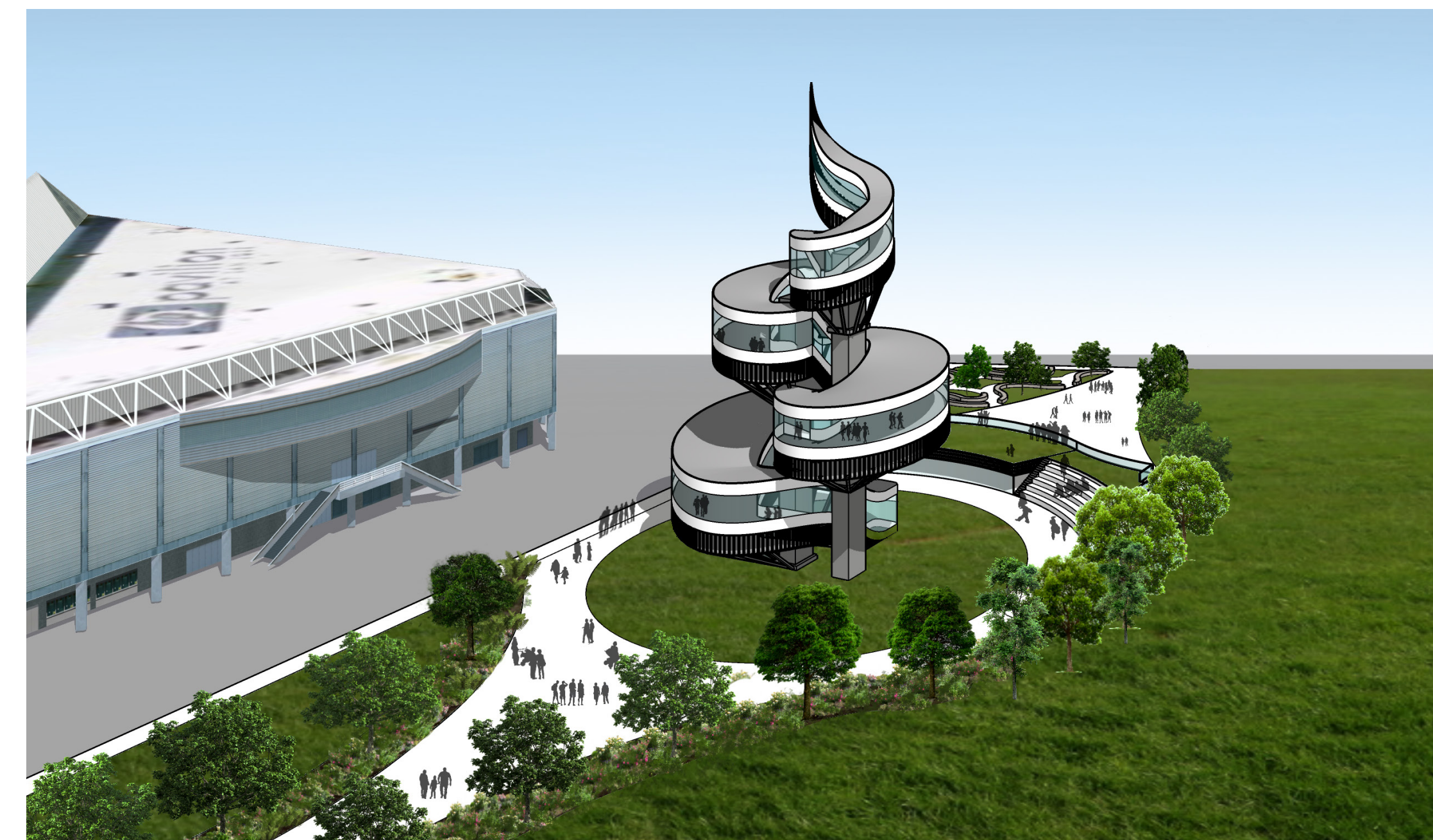
Right elevation

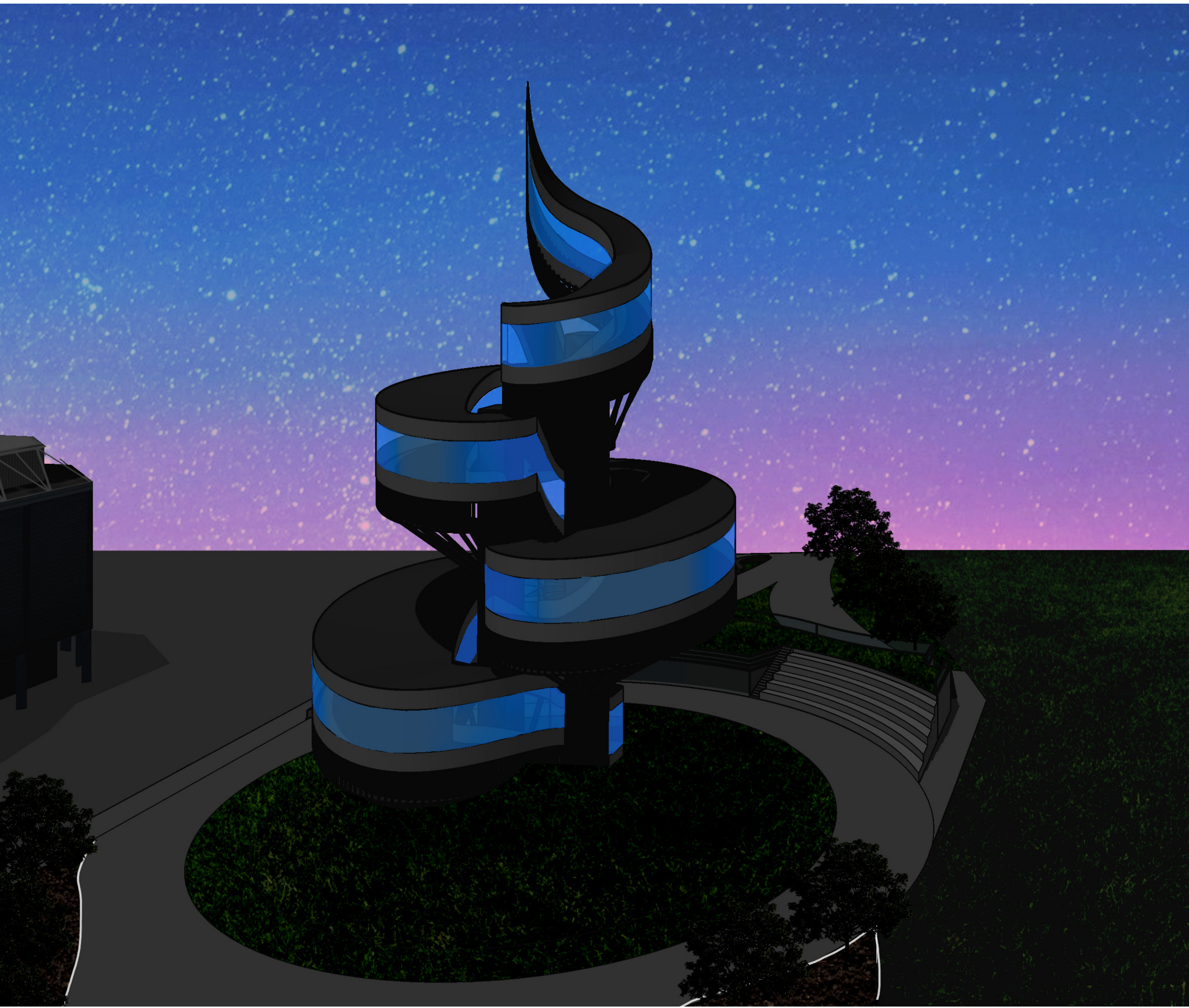


Rear elevation

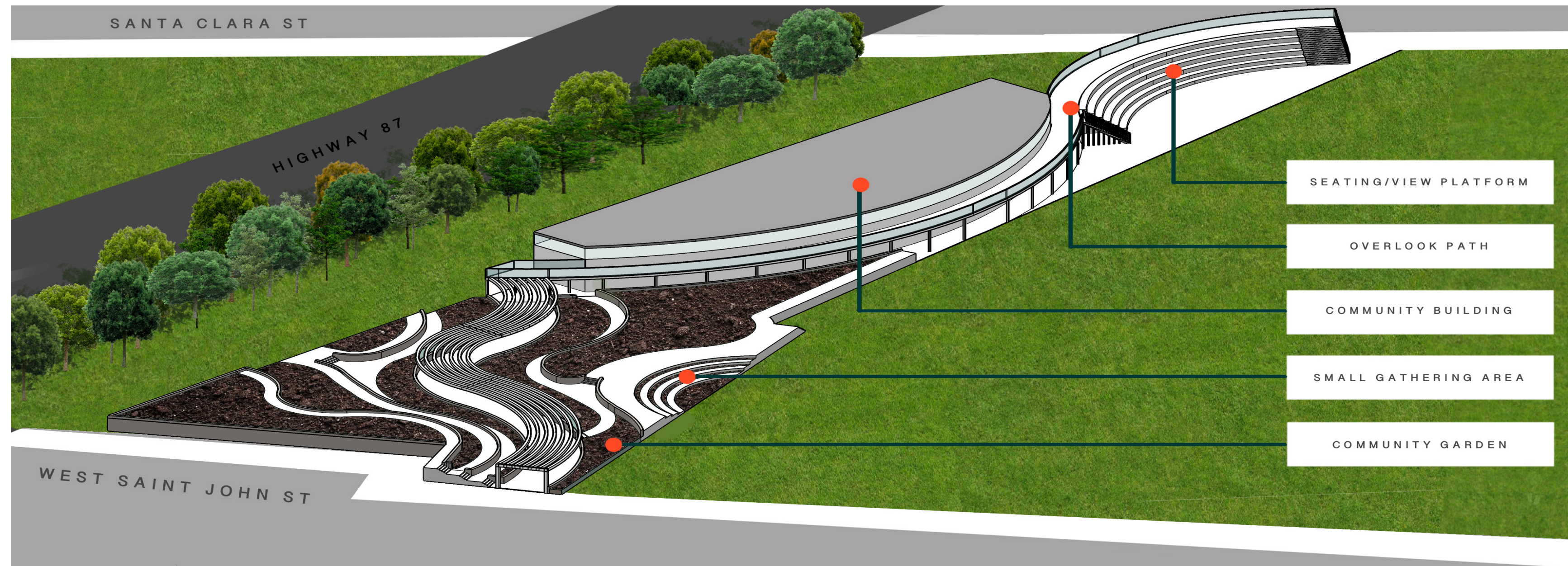


Left elevation





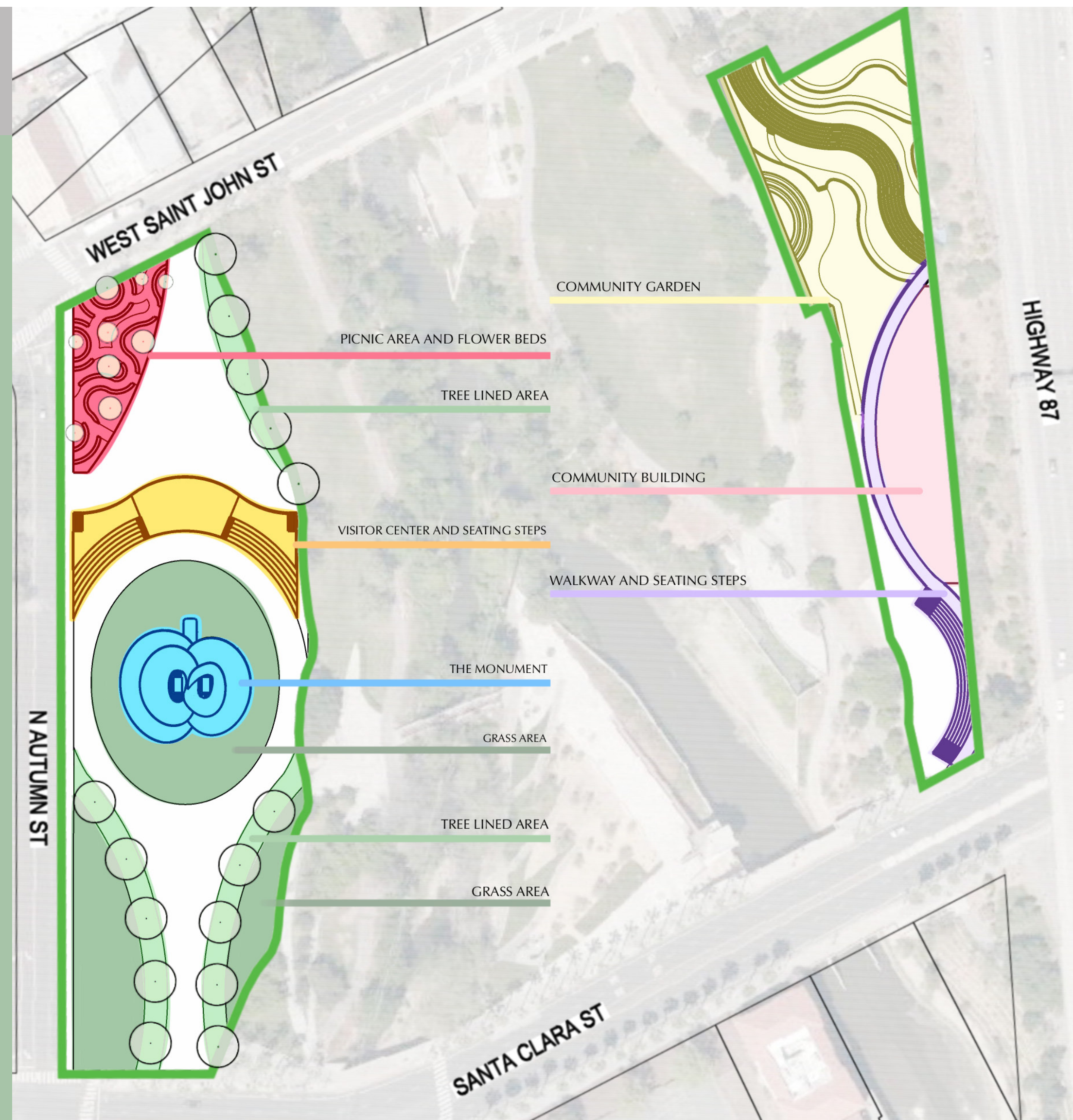
EAST PARK



WEST PARK

The West side of the site draws visitors to the monument and visiting center. With panoramic views, visitors are able to see all parts of San Jose and the Bay Area inside the monument. The visitor center has a green, walkable roof so visitors can lounge outdoors with a rooftop view.

The west side of the site also contains a picnic area surrounded by trees, bushes, and flowers. This area will cater to any visiting families, groups, and individuals looking to relax and enjoy their time at the park.



EAST PARK

The east side of the park will serve and give back to the local community. The community gardens will be an area for local students and families to volunteer, learn, grow, and have access to healthy foods.

There will also be a community building that will serve as a multi purpose recreational center for families in the nearby area. Imagined as a place where local students, families, and individuals can partake in community activities and opportunities. There are also multiple points to view the monument from the east park.