

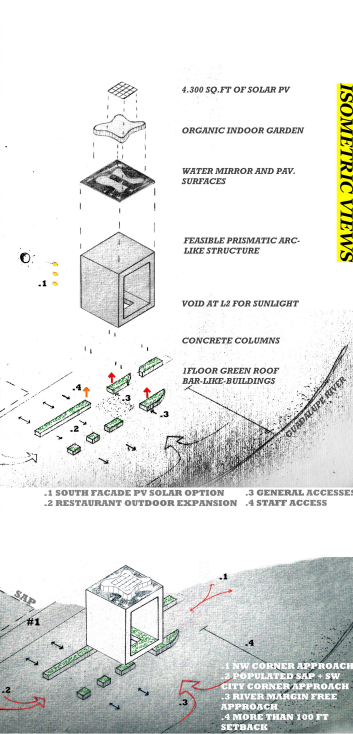


**ARENA GREEN PARK ACTIVATION**  
TO LINK CITY IN A SENSITIVE-TO-NATURE WAY

**PROGRAMMING**  
PARK uses indoor areas: visitors centers, library, landmark shop, bars, exhibition gallery, cafes. They enjoy sunlight and green continuity for outdoor expansion in a livable atmosphere. Also concerts and season's fairs can be host. The SERVANT floors host backup and gentle office areas.  
The Golden Boxes can host art and heavy-duty technology products exhibitions, conferences and small meetings.  
Intimacy Units offer a calm conversation place within main big gardens. They can be programmed / rented for so people celebrations, meetings, etc.

**NET ZERO**  
In a 300 sunny day/year spot, the project set 4300 sq.ft of Solar PV at its roof. Also, tree levels 3 to 12 (3 to 12) can host more PV panels and face south (see 'step 3').  
**GREEN FOOTPRINT**  
Few trees must be relocated. The project provide green roofs to preserve the green continuity. Almost by 90% the entire footprint area is green-roofed! (see plan below).

**ISOMETRIC, PARK IMAGE AND GROUND FLOOR PLAN**  
#1 Arena Green Park activation. Here people can gather freely in park mood and use new commercial city functions in synergy with SAP and main dense city corners. New thousands sq.ft of library, retail and other park facilities are set and also nature continues. The Carousel could be maintained/relocated. If it stays, 1 unit (n°15 in ground) moves.  
Servant and served spaces\* result from a feasible structure. Vermeided and trusses encompass offices and other Servant spaces facing both nature and the golden gardens in Servant status.



**THE GOLDEN GARDENS IN THE SKY**  
The World-class SV Landmark

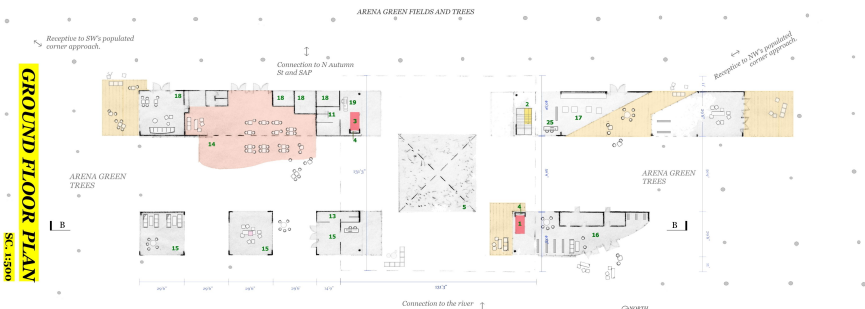
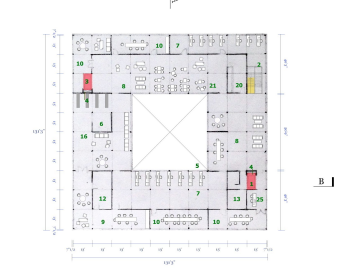
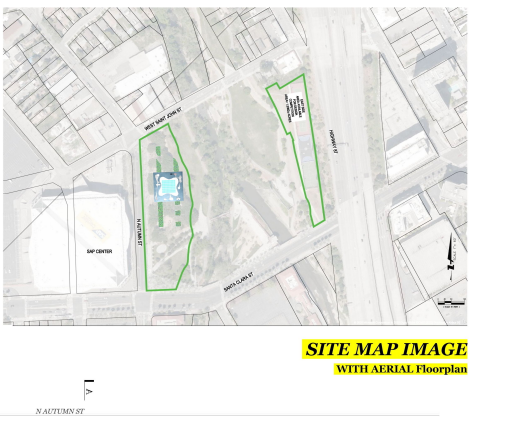
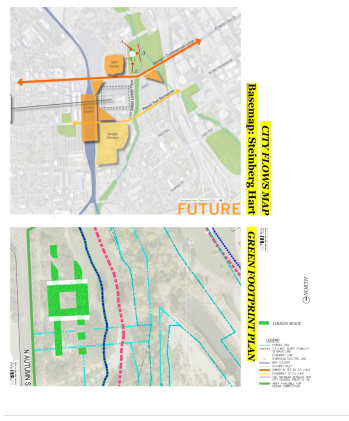
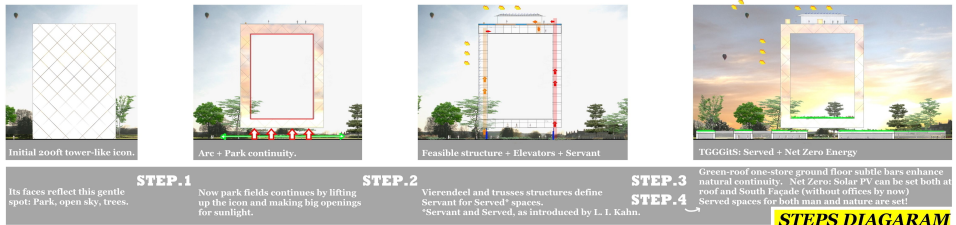
**DIFFICULTIES TO OPPORTUNITIES**  
From the begging the project intend to answer 3 questions:  
How to achieve world-class status with just a 200ft-high structure?  
What and how to build, linking the city, park/river but also enhance nature?  
How to crystalize Silicon Valley's time and innovation world-role?

**WHAT IS TGGGITS?**  
It is essentially 2 things:  
1: A lighting mechanism  
Gold and gold-anodized-aluminum surfaces are set between water mirrors at 18ft-high wide floorplan. Remarkable moments follows each other: By night, the icon lit. By day, light merges to open the eyes. Sunrises and sunsets are changing spectacles climaxes.  
2: An attitude of natural continuity, responding to park and city linking  
The tower become Arc. It sets big free-from-humans openings to enhance nature (vegetation, clean-air, birds, sunlight) as symbol and fact. The Arc floats upon green-pooled multiuse bar-like-buildings: they enable many sq ft for park activation, face river and city, are extendible for fairs, but at the same time, its free core lets local natural conditions alive.

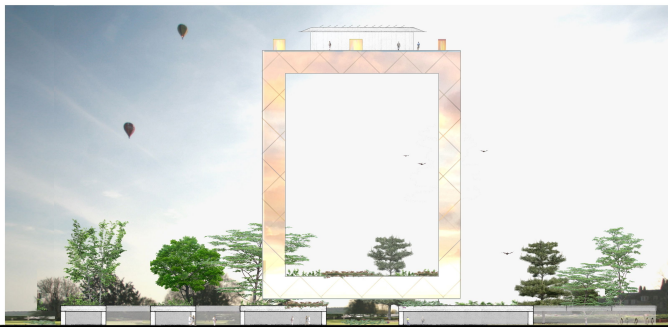
San Jose as innovative spirit hub is looking for materializing with an Icon its leading role, both for self and worldwide community recognition. Here, the out-of-the-box material\* that finishes precise surfaces in high sunny gardens, will consolidate its long-term destiny. (see The Golden Boxes garden).

**SUM UP**  
A remarkable concept with this project is that even with a prismatic (feasible and fast-to-construct) structure, it achieves both world-landmark status and city links in a sensitive-to-nature way.  
It invites more than impose itself. It receives and radiates sensible things. It is a landmark offering stunning experiences to gather local and worldwide community with receptiveness and continuities.

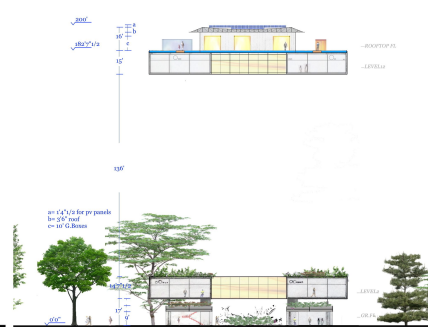
\*The 6 Gold finished Boxes hold heavy-duty art exhibitions. This gold finishing could be considered as indoor-qualified investment: owners can have gold here similarly as art painting.



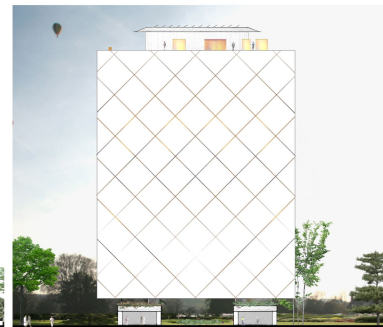




**EAST FACADE**  
SC. 13500



**SECTION AA**  
SC. 13500



**SOUTH FACADE**  
SC. 13500

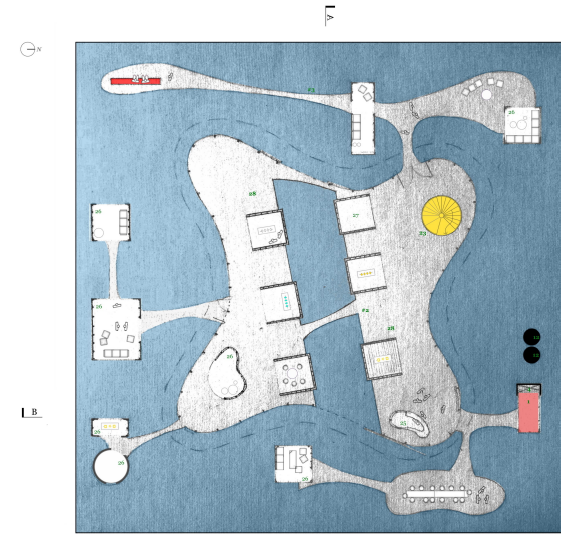


**SECTION BB**  
SC. 13500



THE GOLDEN BOXES GARDEN  
TO BUILD SV'S INNOVATIVE SPIRIT NEW TRADITION

- Floorplans referential n°
1. Public elevator
  2. General stairs
  3. Staff elevator
  4. Installations duct
  5. Void
  6. First aid room
  7. Office area
  8. Office's free-room
  9. Director's office
  10. Meeting room
  11. Restrooms\_staff
  12. Cleaning/Deposit/Air-Cond.
  13. Restrooms\_public
  14. Restaurant
  15. Bar / Restaurant expansion
  16. Library
  17. Locksmith-shop
  18. Cafe and retail shops
  19. Staff access control
  20. Kitchen\_staff
  21. Staff dinner area
  22. Kitchen for official events
  23. Studio for IG/SAS
  24. Backup lobby for IG/SAS
  25. Infirmary
  26. Museum office
  27. The Golden Boxes
  28. Free-space, programmable



**ROOFTOP PLAN**  
SC. 13200

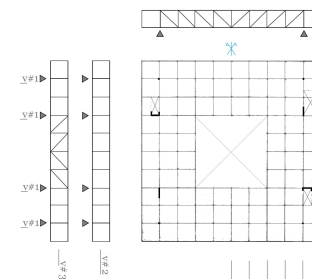
- #3 The Mirrored Golden Garden
- Here people can gather for night, sunset and sunrise, in contact with the stars and the space. It invites local and foreign community to project creativity in this apparently infinite and open high garden at 300 sunny days/year spot. An intellectual abstracted garden.
- #2 The Golden Boxes Garden
- Here the angles and sun changing moments are ideal for filmmaking, concerts and photography. High-standard goods sales, exhibitions and small meetings can be host at this new-icomic (and representative) frame in the country. It is a *latus-sensu* diplomacy garden.

**STRUCTURE SCHEME**

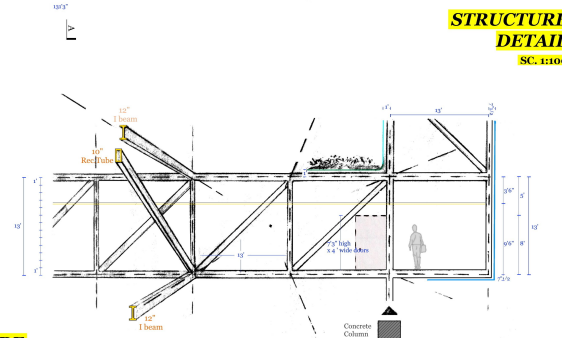
Vereaded and metallic trusses without diagonals configures both STAY-IN-TWO levels.

Grid is all set by .v#2 and are substituted by .v#1 and .v#3 only when mentioned.

At w#2 plan, trusses continuous through the central void. The less than 10" thick water pool is resting at the rooftop center. No people overweigh add, thus is lighter at its critical structural zone.



**STRUCTURE PLAN AND BEAM SCHEME**



**STRUCTURE DETAIL**  
SC. 13100