

# INTERCONNECTION THROUGH TIME

## Arena Green West Master Plan A

0' 30' 60'



### Key

- 1. The Hourglass
- 2. Raised Lawn
- 3. Extended Bench Seating
- 4. Interactive Light Platform
- 5. 5 Skaters & Reflection Pool
- 6. Sky Playground
- 7. Carousel
- 8. Bathroom
- 9. Oak Canopy Seating
- 10. Seating Area

## Silicon Valley's Landmark

The Urban Confluence Silicon Valley competition challenged the world to design a landmark in a section of the Guadalupe River park next to San Jose's SAP center. This region's innovation has imprinted San Jose and the Silicon Valley as the technology capital on the world. As a result, in the last two decades, the city has gone through a massive transformation. The Silicon Valley is a representation of how time brings about innovation and change with each generation, technology being a verdict to this successional phenomenon. Thus, this design translates the interconnection between the past, present and future into the built environment through the use of symbolic representations and experiences inside the Arena Green West. The competition also presented the opportunity to practice respect for the surrounding context and natural ecology of the site. In this regard, the design transforms the site into a platform for an iconic structure, while maintaining harmony with the adjacent Guadalupe River confluence through careful site analysis.



### Section A

0' 20' 40'



A

Bathroom

Oak Canopy Seating

A'

### Section B

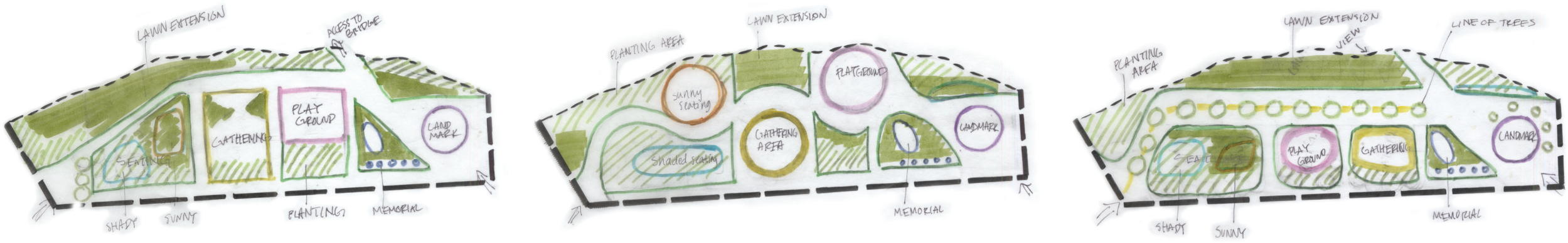
0' 10' 20'



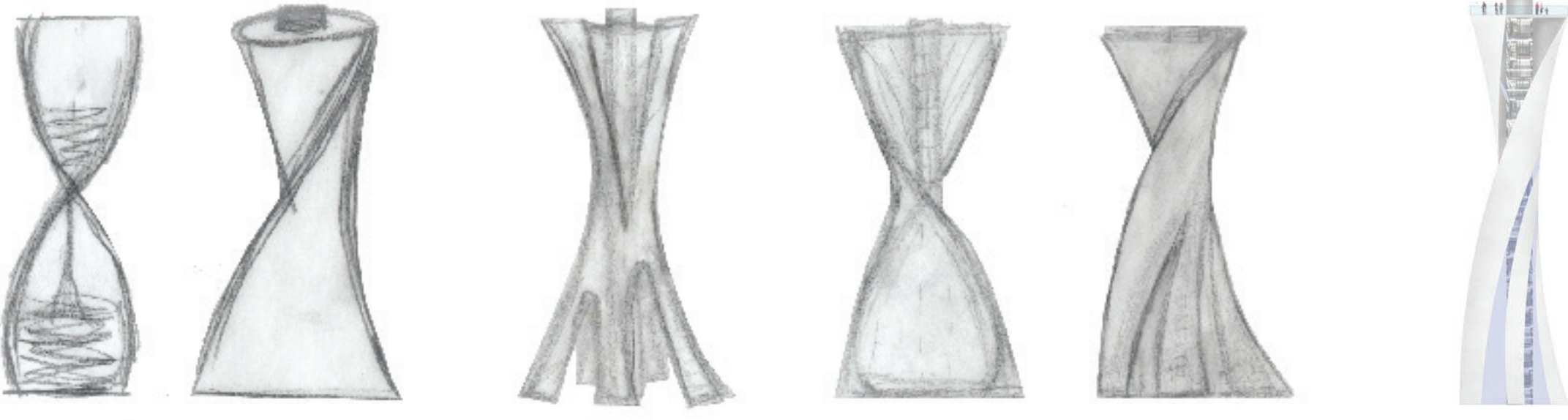
B

The Five Skaters

# Process



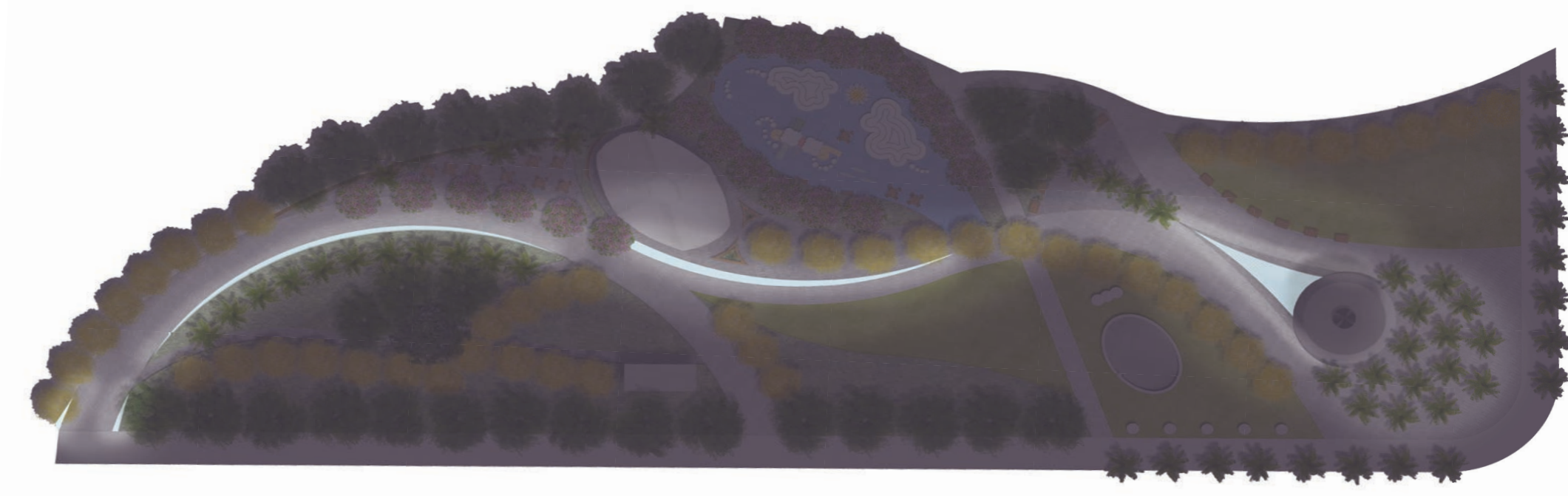
Spatial arrangement and form concepts for the Arena Green West plan



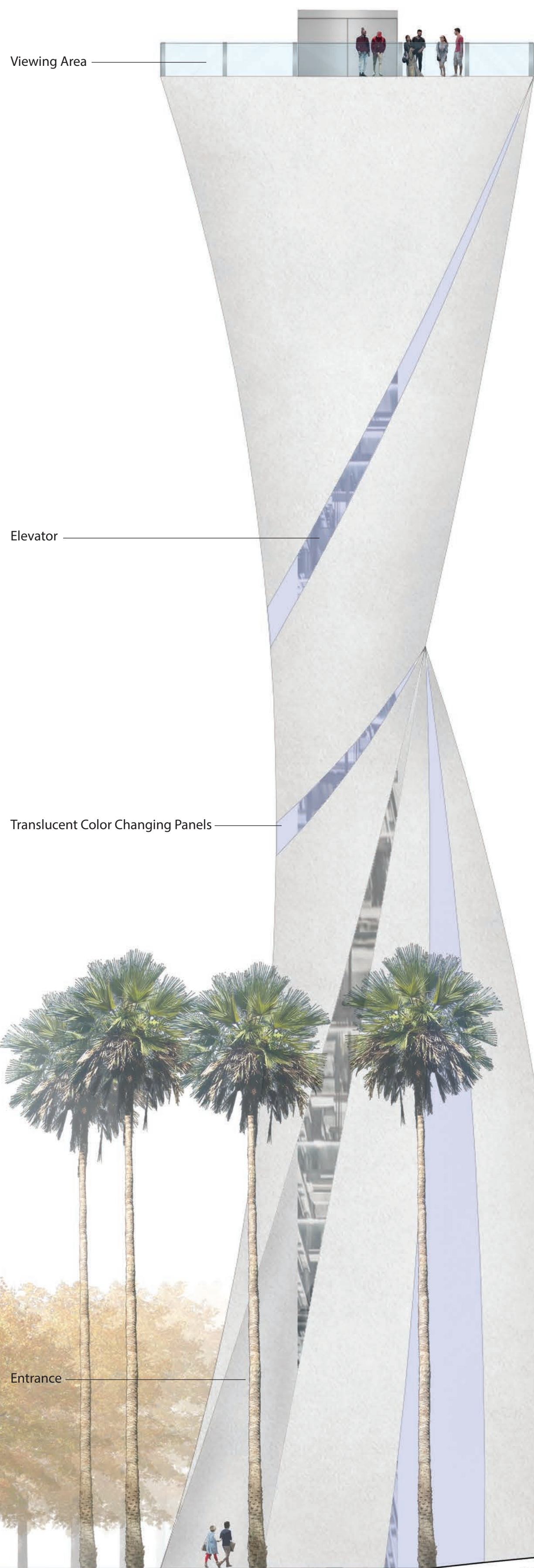
Landmark structure concepts inspired by the hourglass form

# Light Sculpture

A defining night-time feature of the park is presented by a system of in-ground lights that run throughout the entire park and change colors to match the translucent panels of the hourglass. This aspect of the park can be programmed with various lighting displays and shows which awards the park with nighttime use and attraction. The light platform directly extending from the building is interactive, as the squares on the platform are stepped on, they sense pressure and change hue on contact. The entire light system can be programmed to display different light shows and experiences. Interaction with the built environment and landscape is an engaging way to activate the space and transform Arena Green West into a destination during the day and night.



# THE HOURGLASS



Viewing Area

Elevator

Translucent Color Changing Panels

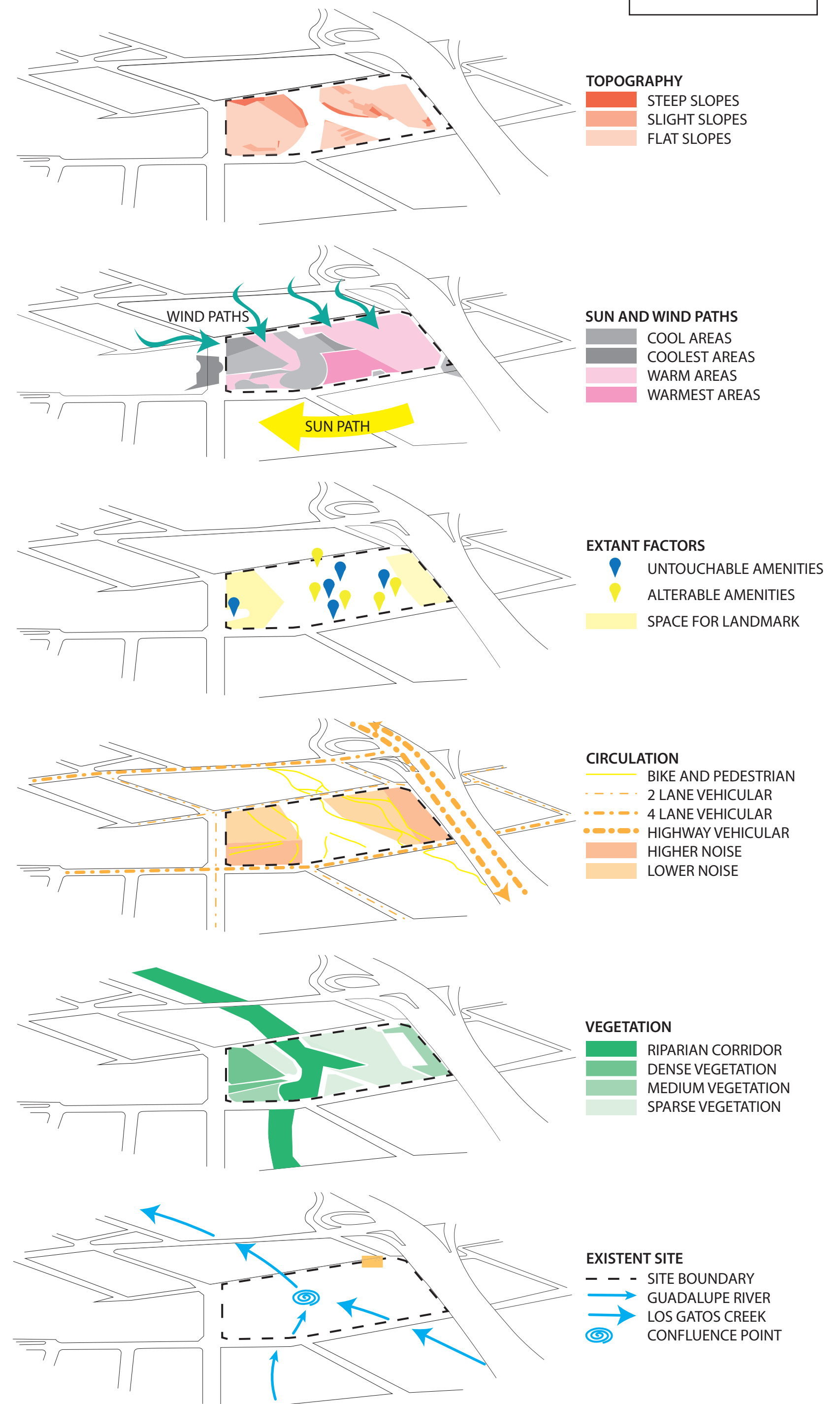
Entrance

Palm Tree Bosque

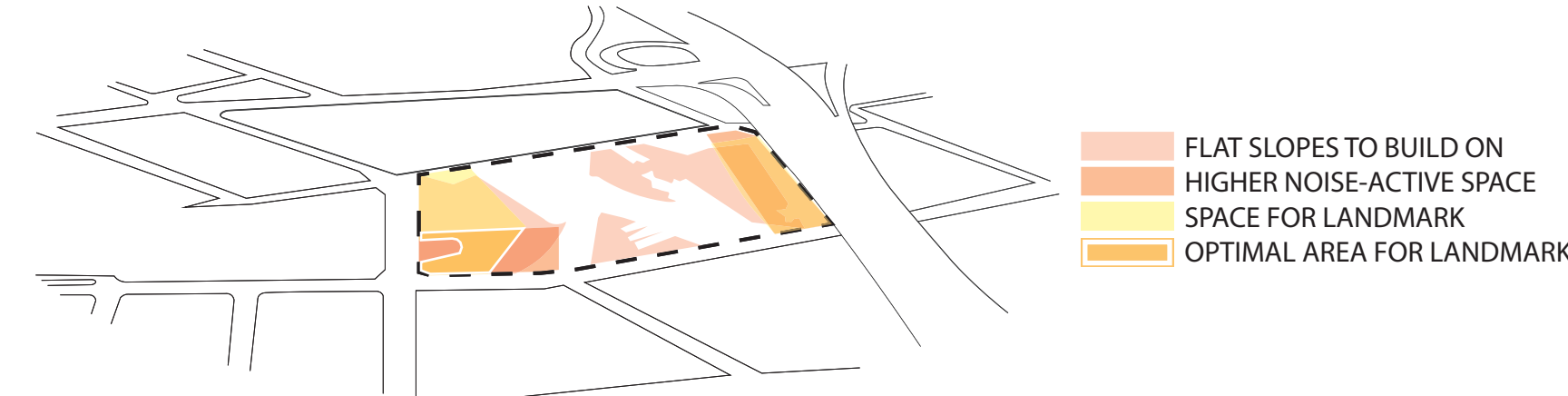
Raised Lawn

Ginkgos

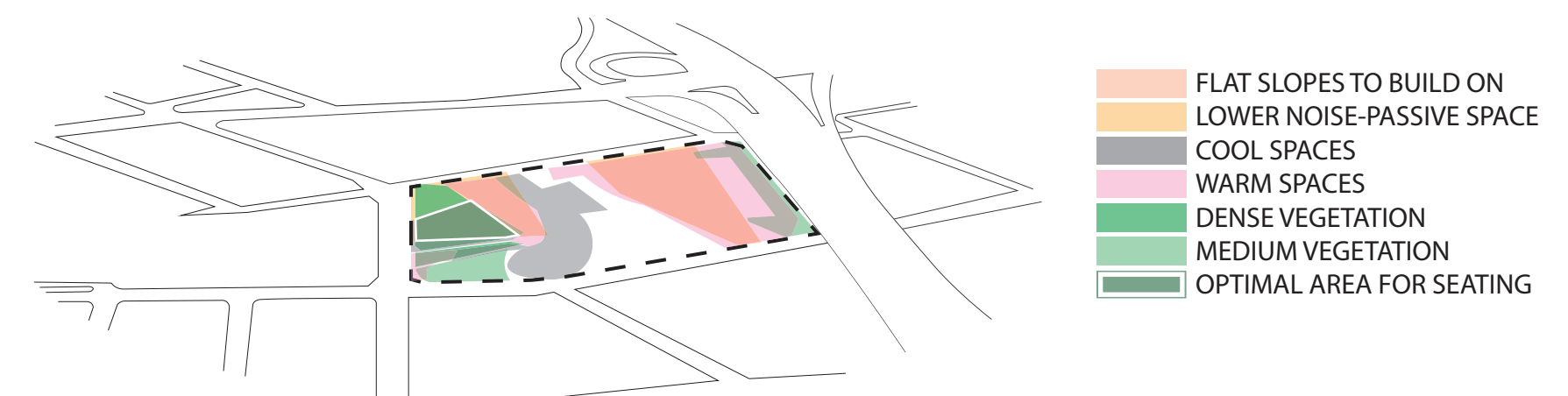
# Site Analysis



## OPTIMAL LANDMARK PLACEMENT



## OPTIMAL SEATING PLACEMENT



# Ginkgo Trees

Fossils related to the modern Ginkgo have been found dating back 270 million years ago, therefore the trees are sometimes referred to as "living fossils." This Ginkgo presents a direct connection to the past and symbolize a powerful prevalence throughout time. This tree further reaffirms this connection between the past, present and future through its deciduous cycle which repeats each season. Through this process, the trees were selected to represent the generational succession we see as a society regarding the technology and innovation created and experienced in our lifetimes.

