

SPARK

ONE ASPECT THAT SUCCINCTLY COALESCE THE VARIOUS ATTRIBUTES SILICON VALLEY'S SPIRIT IS THE INNOVATION THAT HAS TAKEN PLACE IN SUCH A SMALL GEOGRAPHICAL AREA OF THE WORLD. THE RATE OF INNOVATION OVER THE LAST 5 DECADES IS UNPARALLELED AT ANY OTHER TIME IN THE WORLD'S HISTORY.

SPARK CONCEPTUALLY SYMBOLIZES THE MAGIC THAT INITIATES ALL INNOVATION: THAT MOMENT WHEN IDEAS IGNITE, WHEN LIGHTBULBS LIGHT UP, WHEN PREVIOUSLY UNSEEN OPPORTUNITIES GIVE WAY TO BRILLIANT SOLUTIONS, WHEN THE IMPOSSIBLE BECOMES THE POSSIBLE. THE SPARK OF ENERGY THAT TRANSFORMS A THOUGHT INTO AN IDEA, THAT IDEA INTO CREATION, AND THE CREATION INTO AN INNOVATION.



Donate

WHILE AT SPARK, SELECT A FAVORITE CHARITY TO ADD CHARGE TO THE AXONS

Supercharge

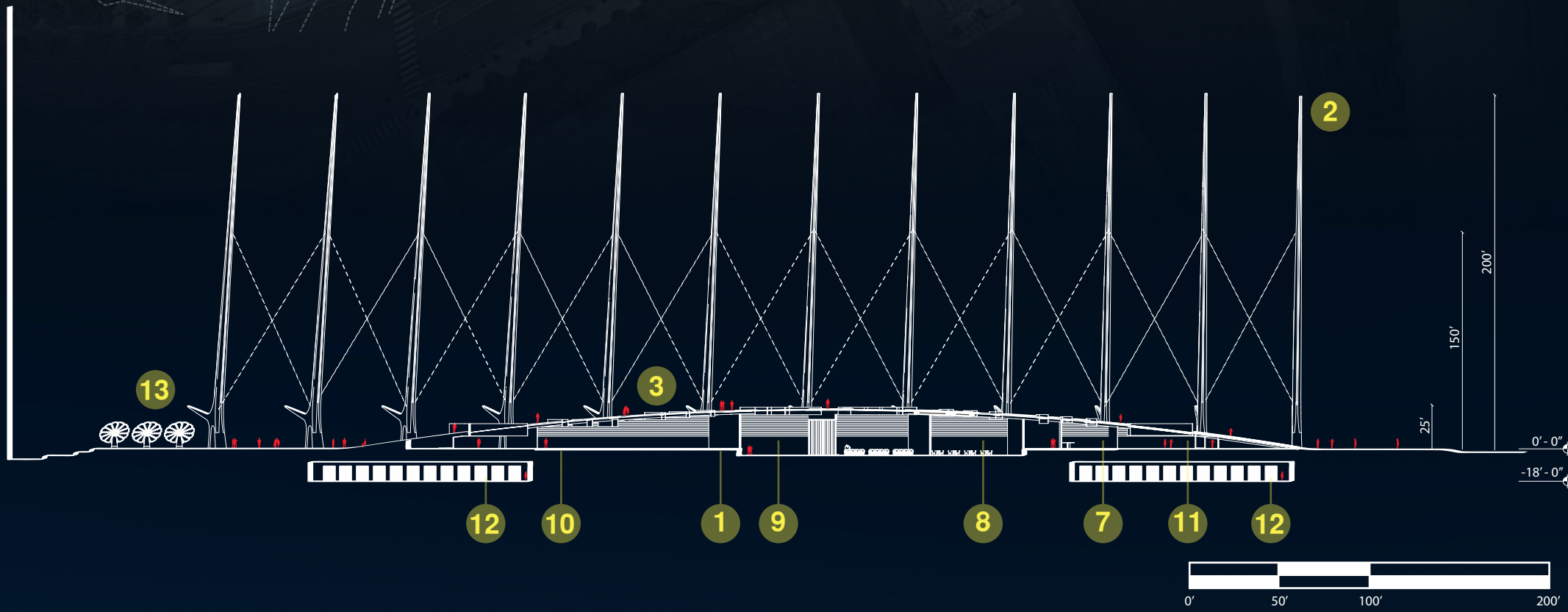
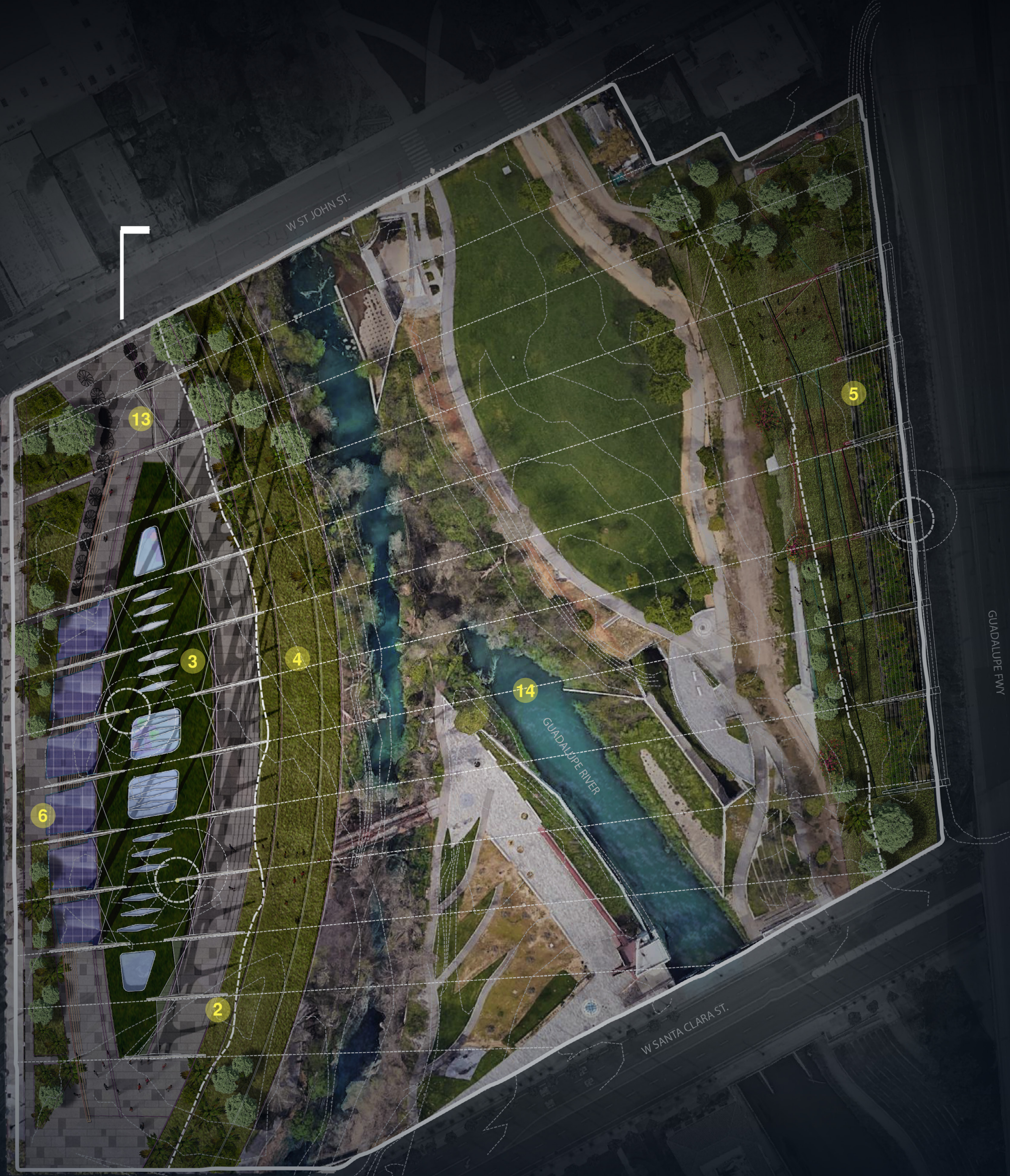
INCREASED DONATIONS ARE REFLECTED IN PULSATING LIGHTS RISING UP THE AXONS

SPARK!

WHEN CONTRIBUTIONS REACH A PRE-DETERMINED THRESHOLD, A SPARK EVENT IS TRIGGERED!

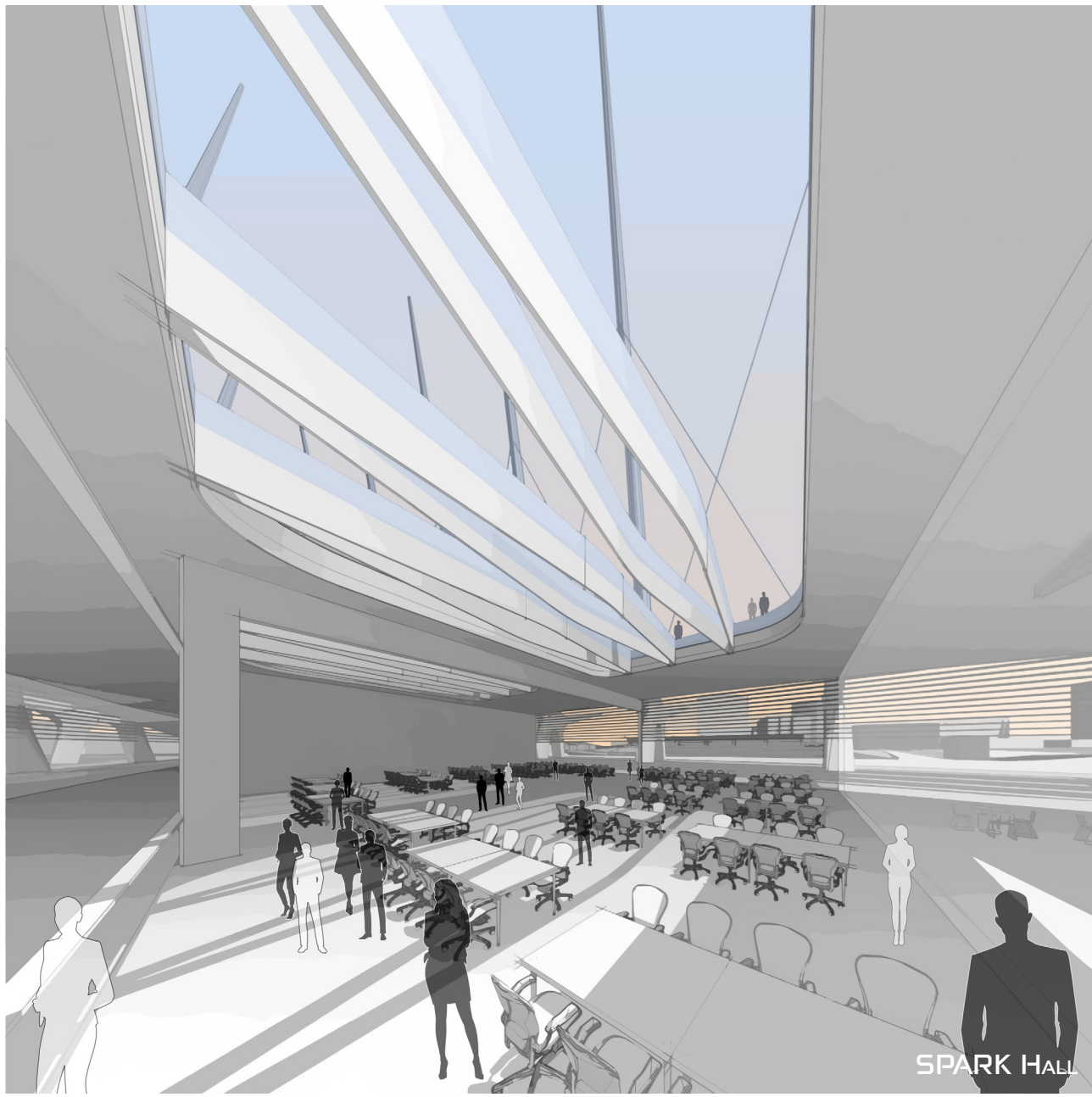
SPARK PROGRAM:

- 1 SPARK PLAZA** – OPEN FLEXIBLE SPACE WITH PIEZOELECTRIC PAVERS
- 2 AXONS (SPARK MASTS)** - TITANIUM-TIPPED PRECAST CONCRETE 200' TALL STRUCTURAL ELEMENTS WITH PULSATING RISING LIGHTS RESPONDING TO DONATIONS AND CREATING A DIELECTRIC BREAKDOWN AS CONTRIBUTION GOALS ARE ACHIEVED. THESE AXONS CONSTITUTE THE ESSENCE AND SPIRIT OF THE ICON, SYMBOLIZING THE SYNAPSES OF IDEAS THAT OCCUR IN THE SILICON VALLEY
- 3 SPARK PARK** - THIS GREEN ELEVATED PARK WILL PROVIDE AN AMAZING EXPERIENCE AND PHOTO OP LOCATION FOR VISITORS AS THEY GET IMMERSED INTO THE RHYTHM OF AXONS. THE PARK WILL HELP HARVEST RAINWATER AND COLLECT IT IN UNDERGROUND CISTERNS
- 4 TERRACED PARK** - A PLACE FOR THE CITIZENS OF SAN JOSE AND ALL OTHER VISITORS. A PLACE TO LINGER, CONNECT WITH NATURE AND HAVE AWESOME VIEWS OF THE HANGING GARDENS AND THE SAN JOSE SKYLIGHT BEYOND
- 5 HANGING BOTANICAL GARDENS** - PLATFORMS, TRELLISES AND GREEN WALLS WILL PROVIDE VISITORS WITH THE PERFECT VANTAGE POINT FOR SUPERCHARGED EVENTS
- 6 NEURAL VELARIUM** - BOTH A SHADING CANOPY AND ENERGY GENERATOR, THIS GLASS CANOPY WITH BUILDING INTEGRATED PHOTOVOLTAIC PANELS (BIPVs) WILL GENERATE POWER FOR BUILDING USE AND SPARK PARK
- 7 SPARK WELCOME CENTER** – THE 2,800 SF SPACE WILL WELCOME VISITORS AND INTRODUCE THEM TO SPARK. IT WILL ALSO INCLUDE A GIFT SHOP WITH THE MOST INNOVATIVE AND INGENUOUS GIFTS IN SAN JOSE
- 8 SPARK CAFE AND RESTAURANT** - 3,900 SF INDOOR DINING SPACE AND LARGE OUTDOOR TERRACE SEATING THIS CREATIVE AND ENERGETIC EATERY WILL OFFER LOCAL FARM TO TABLE CALIFORNIA CUISINE THEMED BY INNOVATION, SPARKS AND SUSTAINABILITY AND SUPPORTING SUSTAINABLE FARMING PRACTICES IN THE SAN JOSE COMMUNITY
- 9 SPARK HALL** – A 8,000 SF SUB-DIVIDABLE EVENT SPACE WILL HOST SPECIAL EVENTS AND COMMUNITY EVENTS SEATING SPACE FOR 300 IN BANQUET STYLE OR 450 IN PRESENTATION STYLE
- 10 IDEA BIOME** – AN 8,000 SF FLEXIBLE EXHIBIT AND MUSEUM SPACE WILL SHOWCASE THE VERY LATEST INNOVATION TECHNOLOGIES AND INTERACTIVE EXHIBITS COMING OUT OF THE SILICON VALLEY
- 11 RESTROOMS** – A 3,000 SF AREA FOR INCLUSIVE RESTROOM FACILITIES AS WELL AS MOTHER'S ROOMS, JANITORIAL SPACES, FIRST AID, AND VENDING AREAS
- 12 RAINWATER HARVESTING** – 12- 500 GALLON WATER-HARVESTING TANKS
- 13 SOLAR PV** – A 16 SMARTFLOWER SOLAR PV ARRAY (OUTPUT: 6,000 KWH/A EACH) – TOTAL OUTPUT: 96 KWH/A. (EXPANDABLE)
- 14 GUADALUPE RIVER AND RIPARIAN CORRIDOR** – A PRESERVED AND ENHANCED PARK AND WILDLIFE HABITAT
- 15 SKYLIGHTS** - NATURAL LIGHT & VISUAL CONNECTION TO THE AXONS
- 16 STRUCTURAL CONCRETE ROOF**

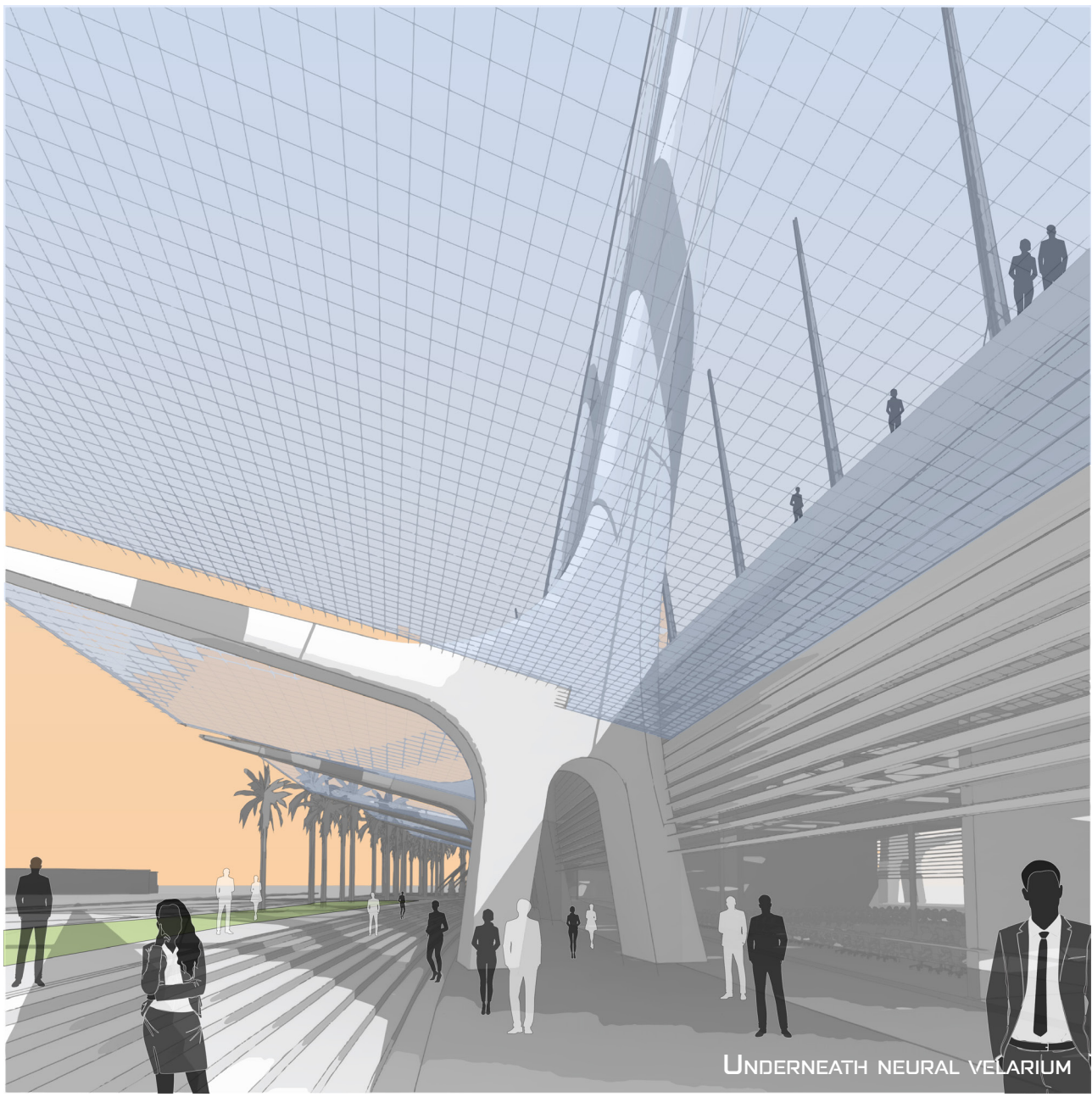




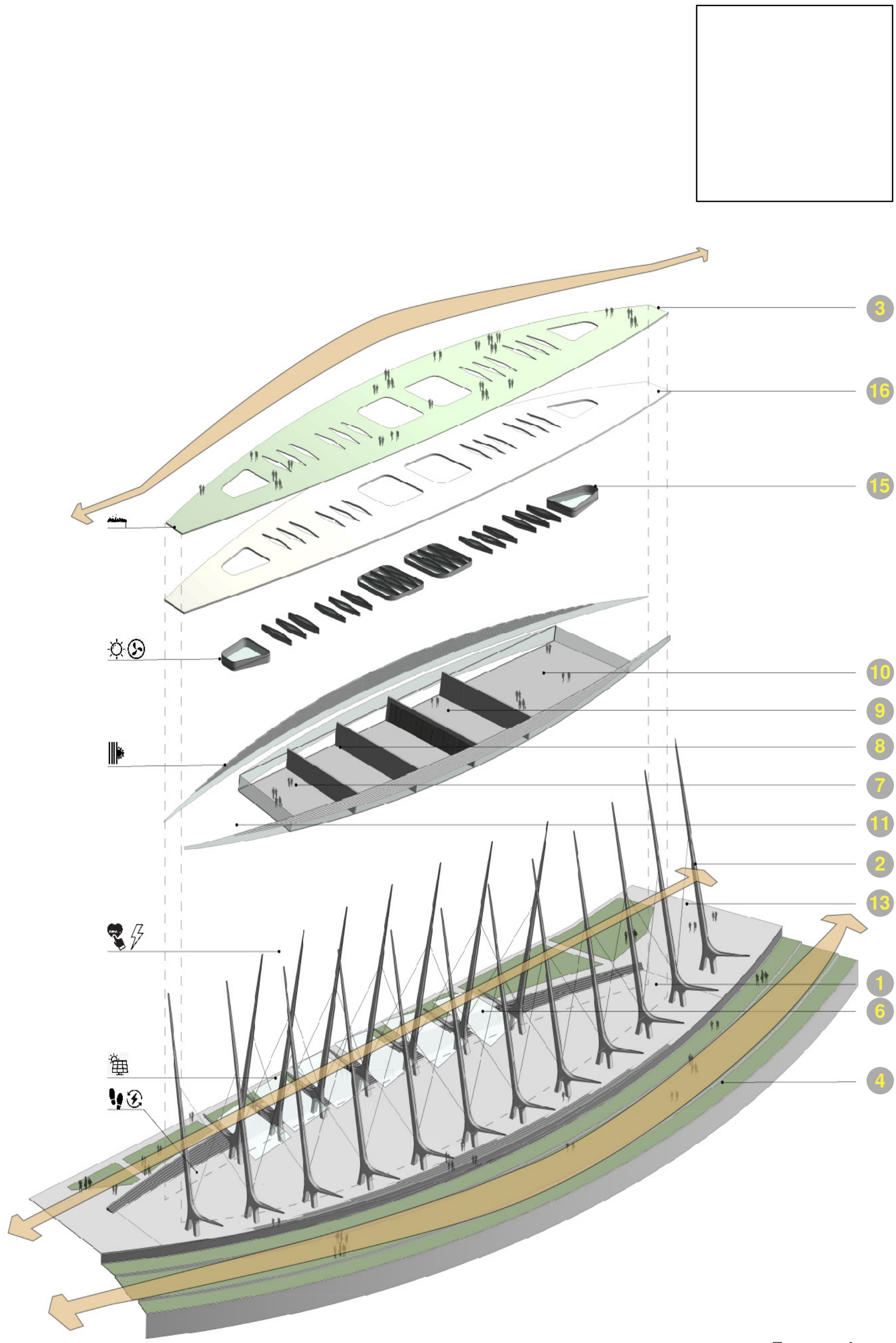
VIEW FROM GUADALUPE RIVER



SPARK HALL



UNDERNEATH NEURAL VELARIUM



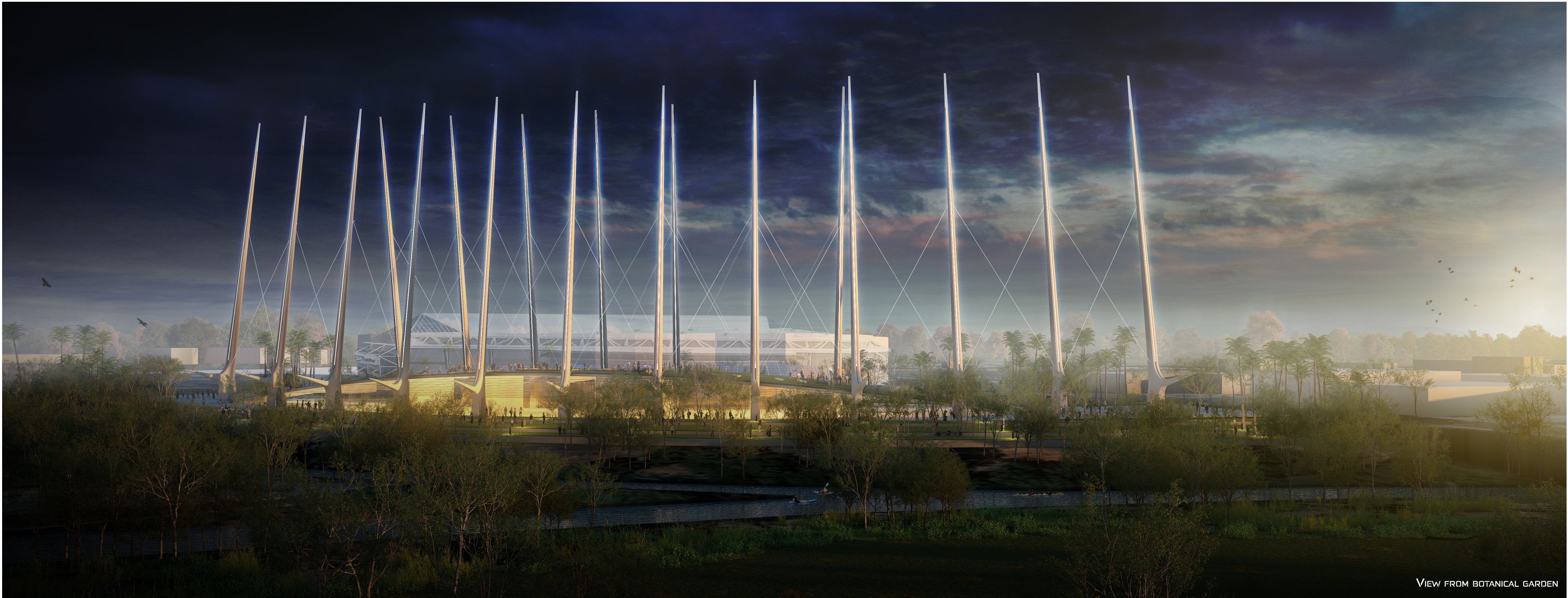
EXPLODED AXON



ENTRANCE PLAZA



WALK OVER SPARK PARK



VIEW FROM BOTANICAL GARDEN