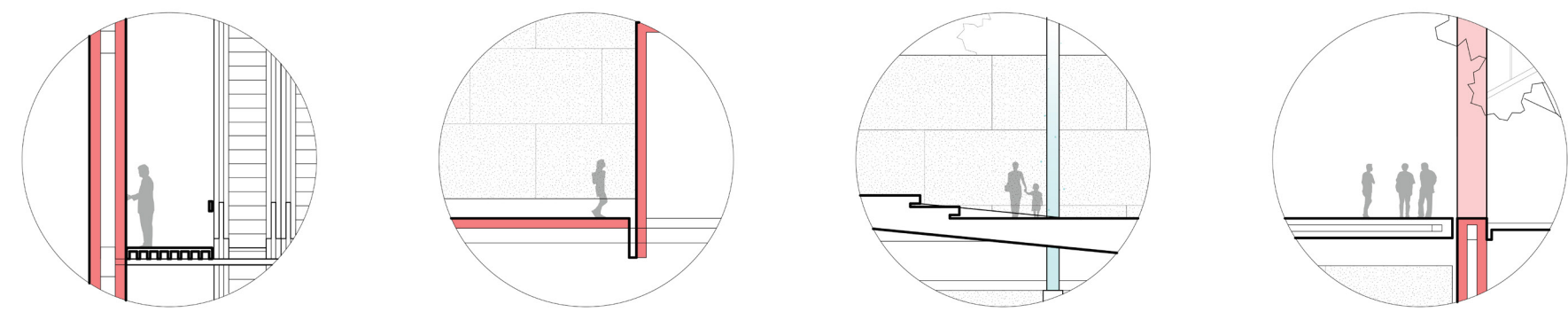
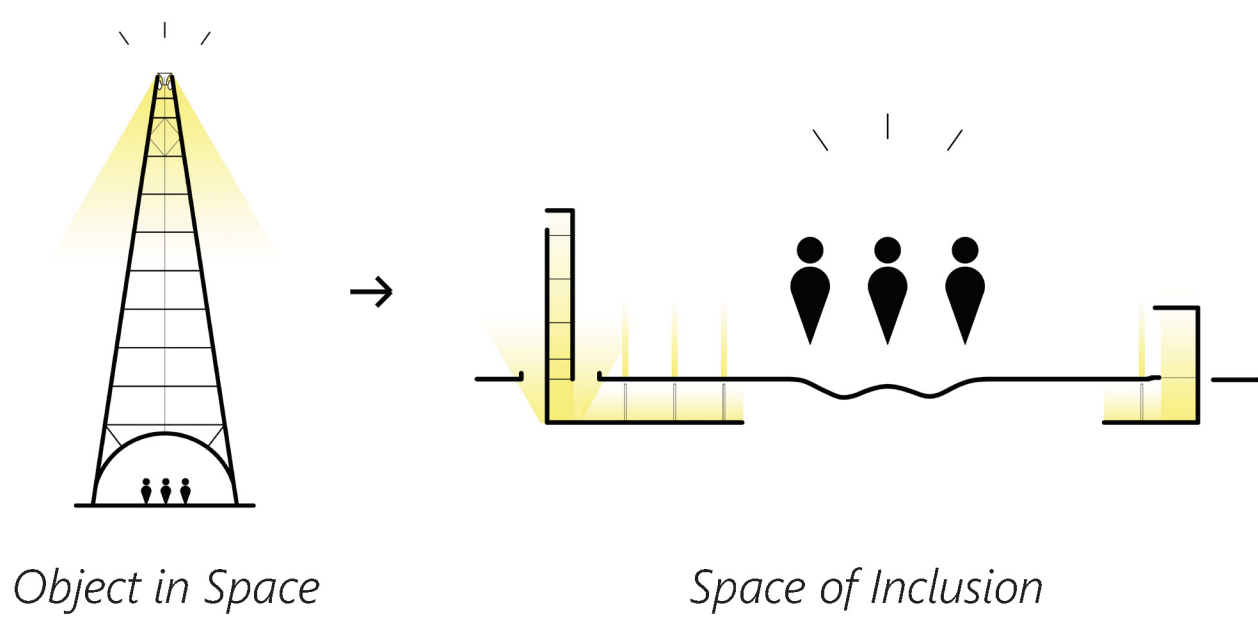


San José Information Wall

Silicon Valley is not only a place, but a culture where people, ideas and beliefs are innovating the ways that we connect to other humans and the world. Inspired by this human connection and how the San José Light Tower brought people together to the space of the city, this project doesn't propose an object but a space of inclusion. Framed by a wall of information, this space gives freedom to the individual while it also provokes multiple cultural activities, behaviors and effects. Not only does it emphasize the unique condition of the confluence of two rivers, but it also gives a gateway and an identity to Silicon Valley by conveying that real human connection is based on equity.

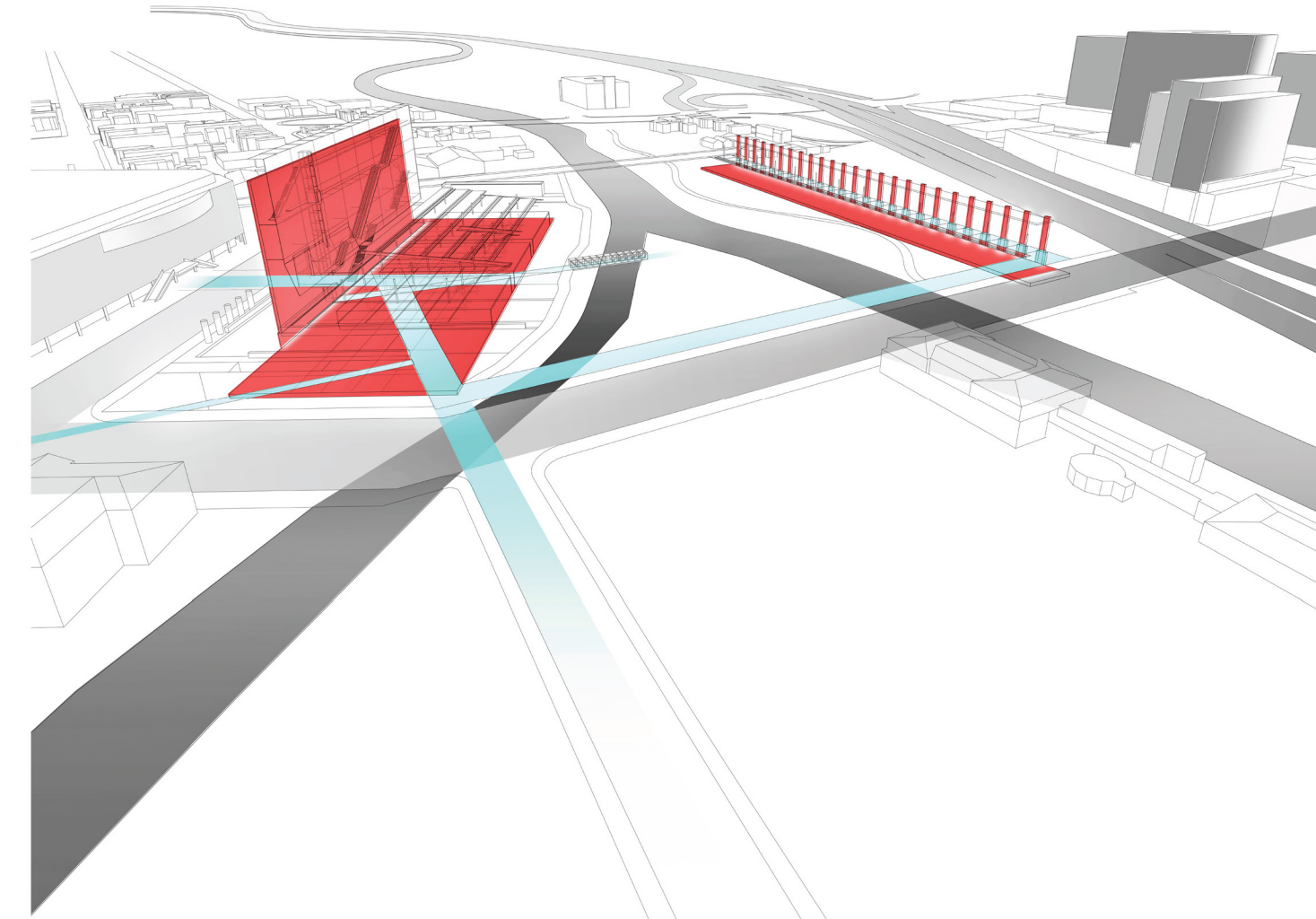
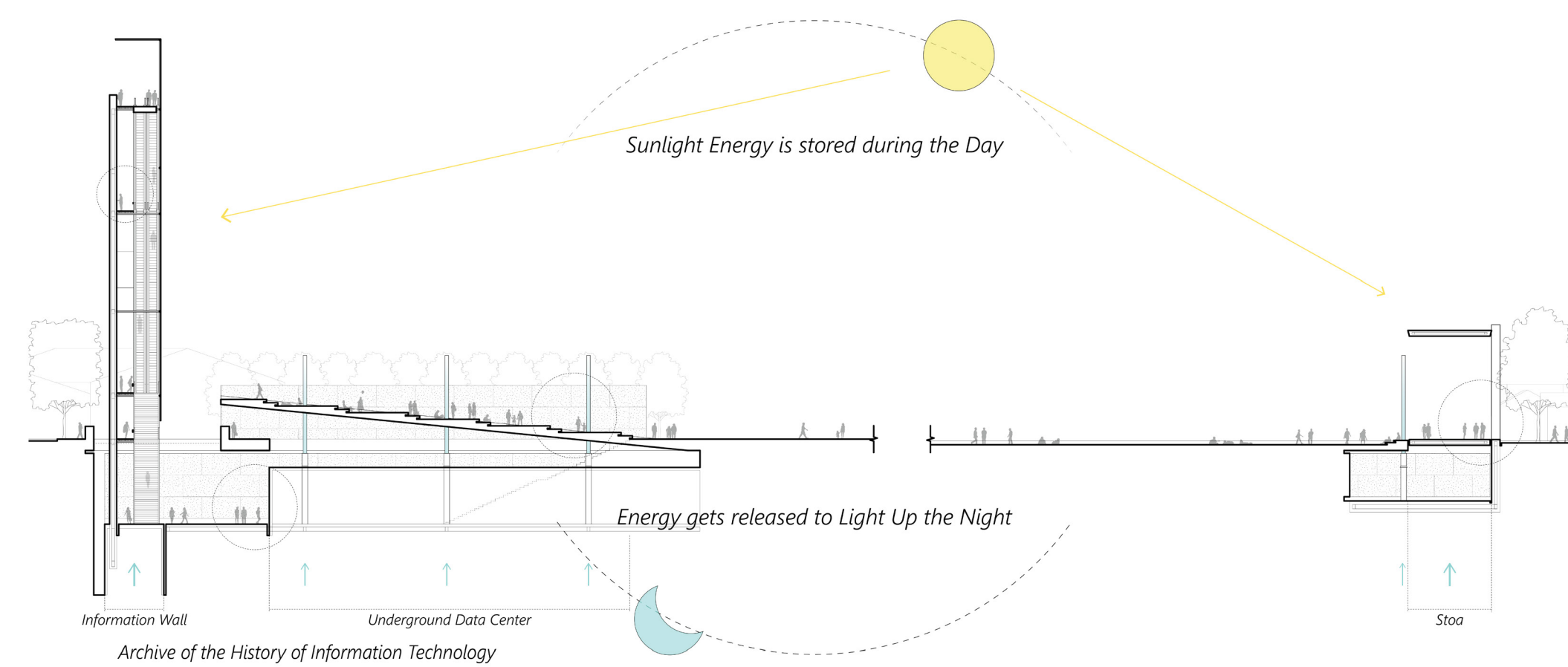


The wall registers the **hand** of every individual that touches it.

People can access **art & culture** from the underground data center.

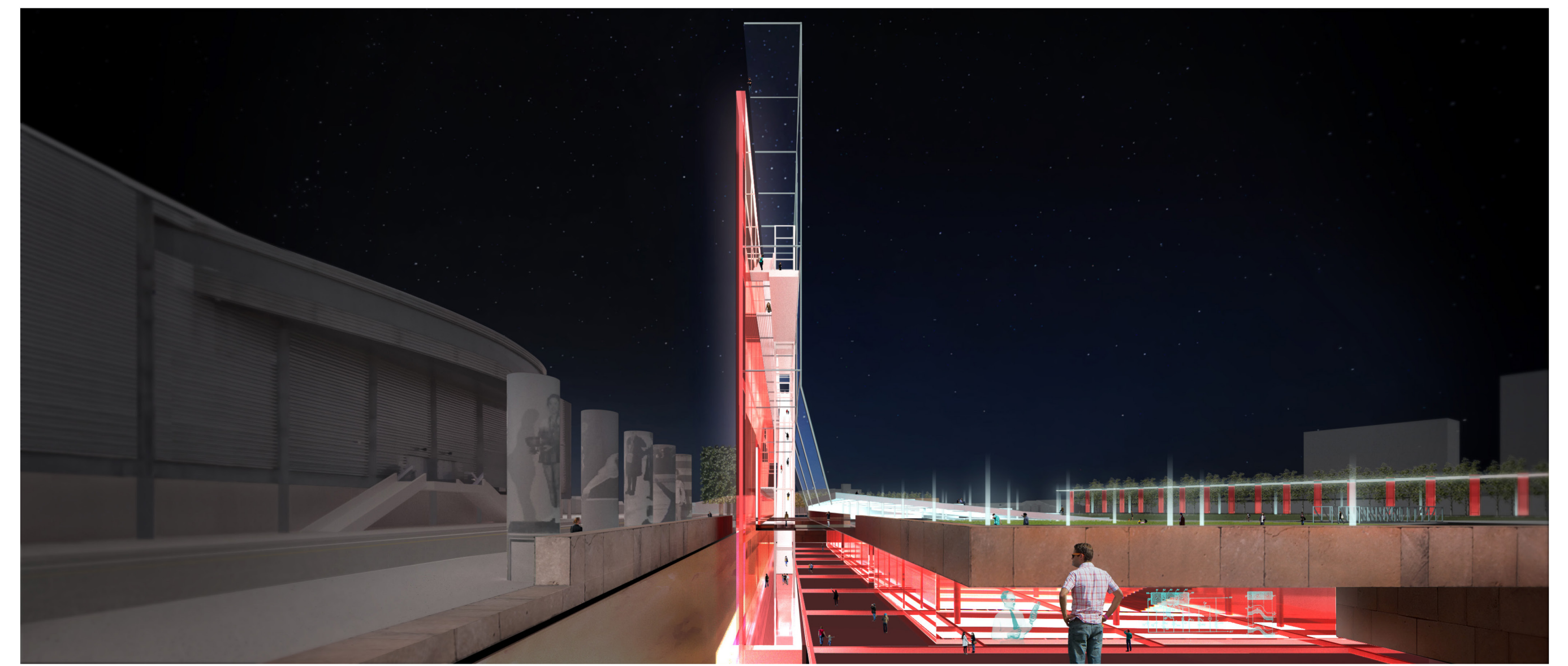
At night, the light beams **interact** with the different activities happening in the space.

The stoa is a frame for public **gatherings** and a welcoming gesture of the park.

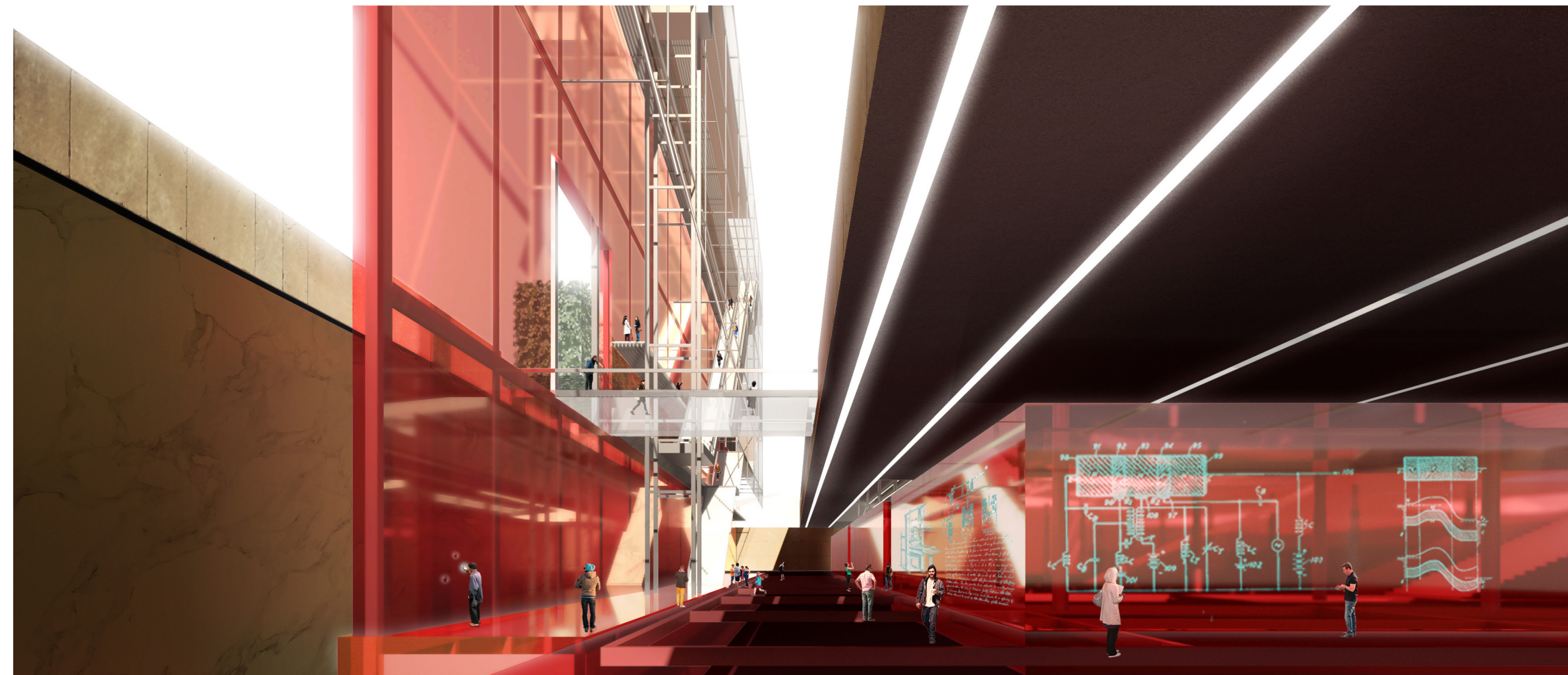




At the beginning of the 21st century the confluence of two rivers opened the ground and a Wall rose. Framing a space in San José, it is said that this wall does not imprison but gives freedom. And that in order to enter the space, one must walk across a forest.



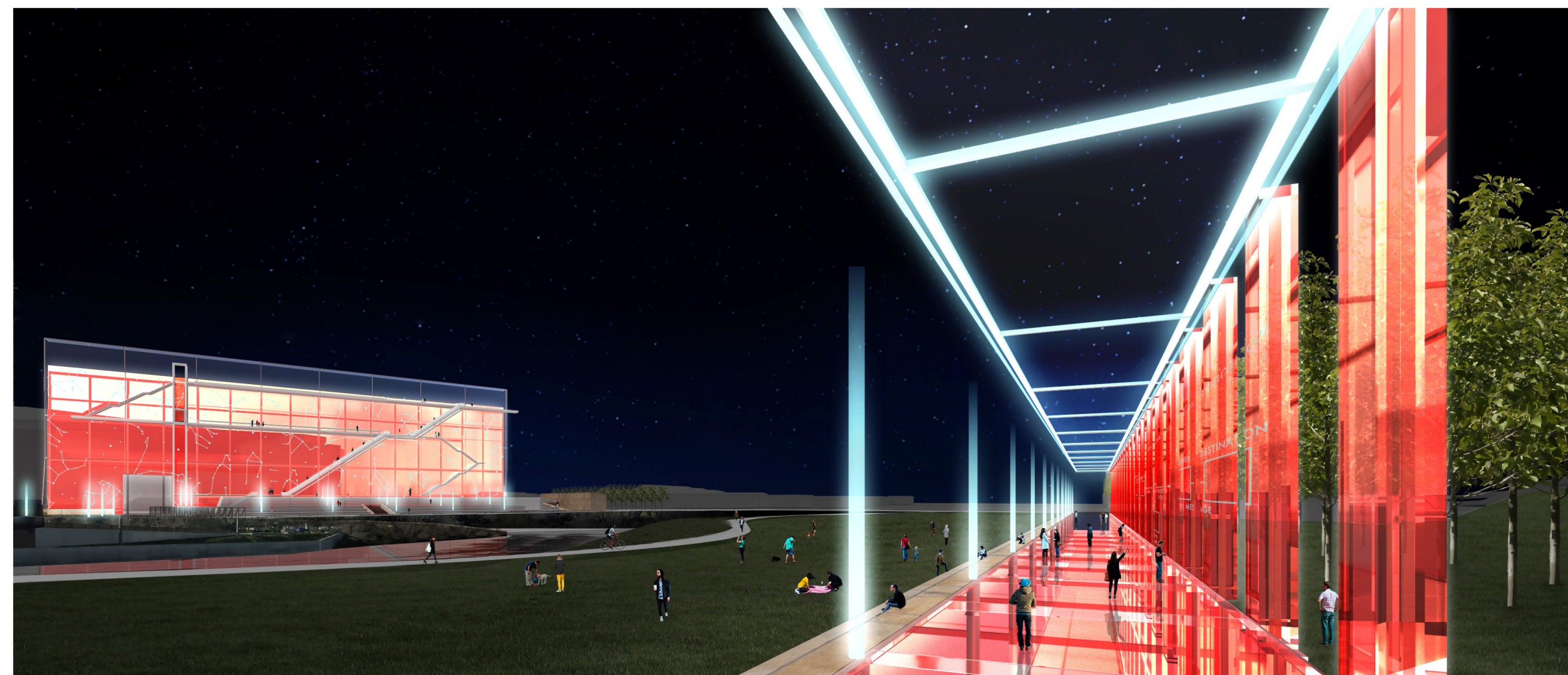
This open ground revealed a physical mark of Silicon Valley, its culture and its pursuit for connecting humans and the world. It holds a piece of the earth and lights up a space of inclusion for everyone: thinkers, citizens and tourists.



Deep underground, an archive emerged to store the History of Information Technology, from the alphabet to the computer & internet. Information is stored in the data center and accessed through the wall. It tells a story on human connection.



Further, humans entered the wall and ascended through the machine. Above ground, the wall frames multiple views of the Valley and the Park. One is able to contemplate about the responsibility that humans and their technology have with nature.



On the other side of the river, a stoa was erected as a frame for public gatherings. A threshold between the forum and the garden. It is not about the object in space but about the people that inhabit and activate the space of the city.



Finally, the wall was designed to register the hand of every individual that touches it, a record of time. Humans leave a mark of their existence, every life is equally important. Real human connection is based on equity.