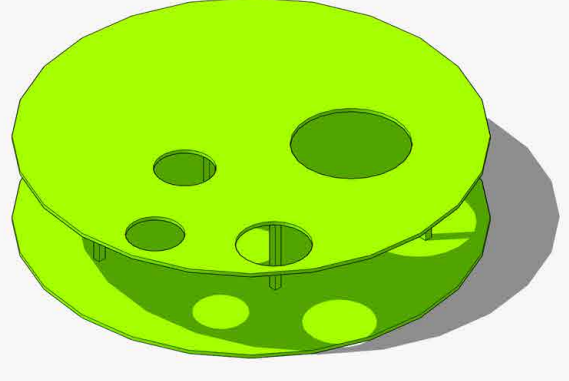
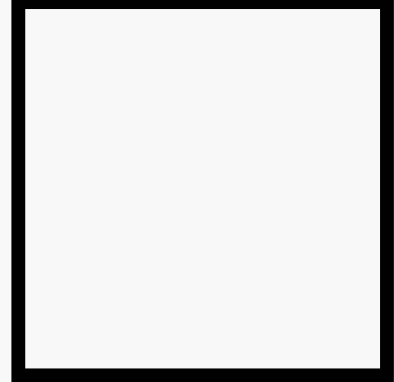
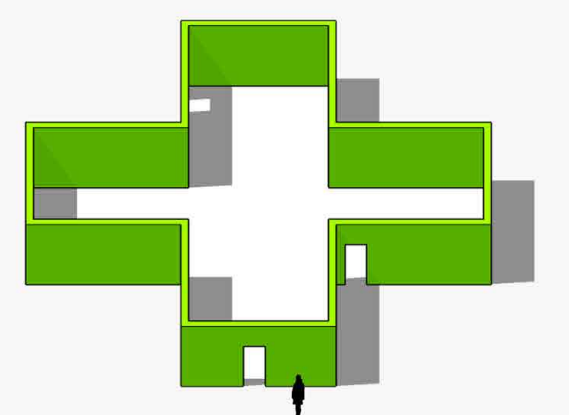


ARTEFACTS OF VIRTUAL REALITIES

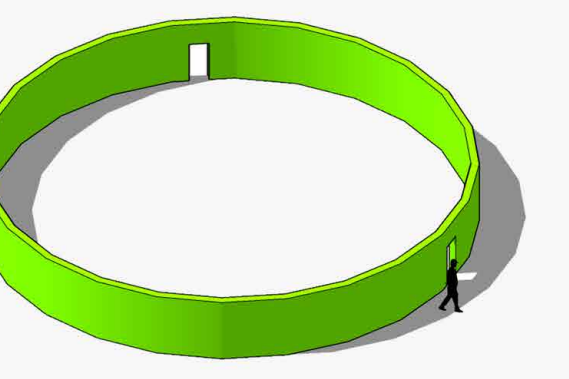
Today our public monuments have been question if they really represent their communities. These monuments have become obsolete in our public spaces. Even one of most representative monument as the statue of Abraham Lincoln could be demolished of for what it represents. In San Jose, a city that hosts the most innovative companies in technology of the world, should become an example how to deal with public monuments in future. Nowadays an image or video could become viral in matter of seconds and it could shake our world. It could change how we think, what we believe, or it could question us. Some images or videos have been a public subject. Social media has overcome the public space for massive messages. That's why our public spaces and monuments should be more flexible with what they represent. Our proposal Artifacts of Virtual Realities a group green elements that interacts with their context and with the user. It uses the technology of the green screen to be able to change the image overall of the artifact. We were inspired with special effects that green screen has been able to brought us to the big picture. This green screen could become a symbol of interaction and flexibility in our public spaces. It could say the message that you want or anything that you need to express. With this, finally our public spaces have become to the people. These green elements could be the pattern they like, they message that they want, they idea that they have. It only needs smartphone for being able to change they pattern to take their new favorite picture. These elements are going to be bright in the night where basically can illuminate their surroundings with a fluorescent green light. This group of elements will become a symbol of the city and a site that you cannot miss.



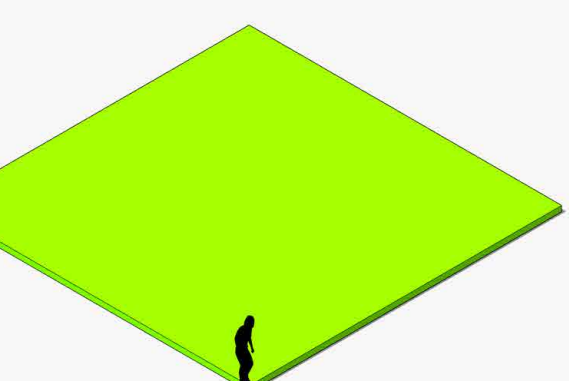
Artefact of Circular Roof and Floor



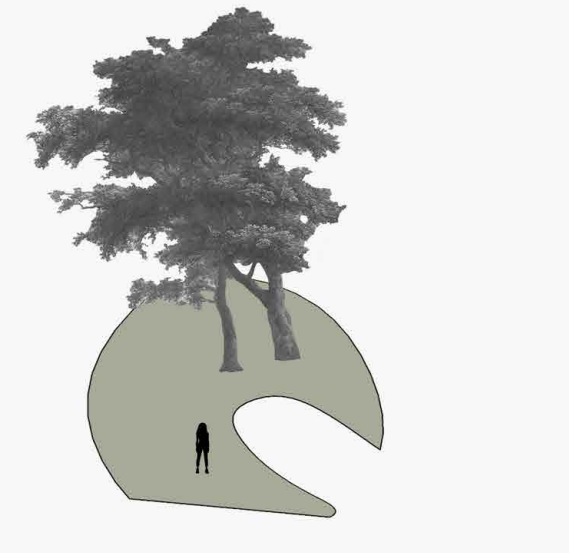
Artefact of Cross Wall



Artefact of Circular Wall



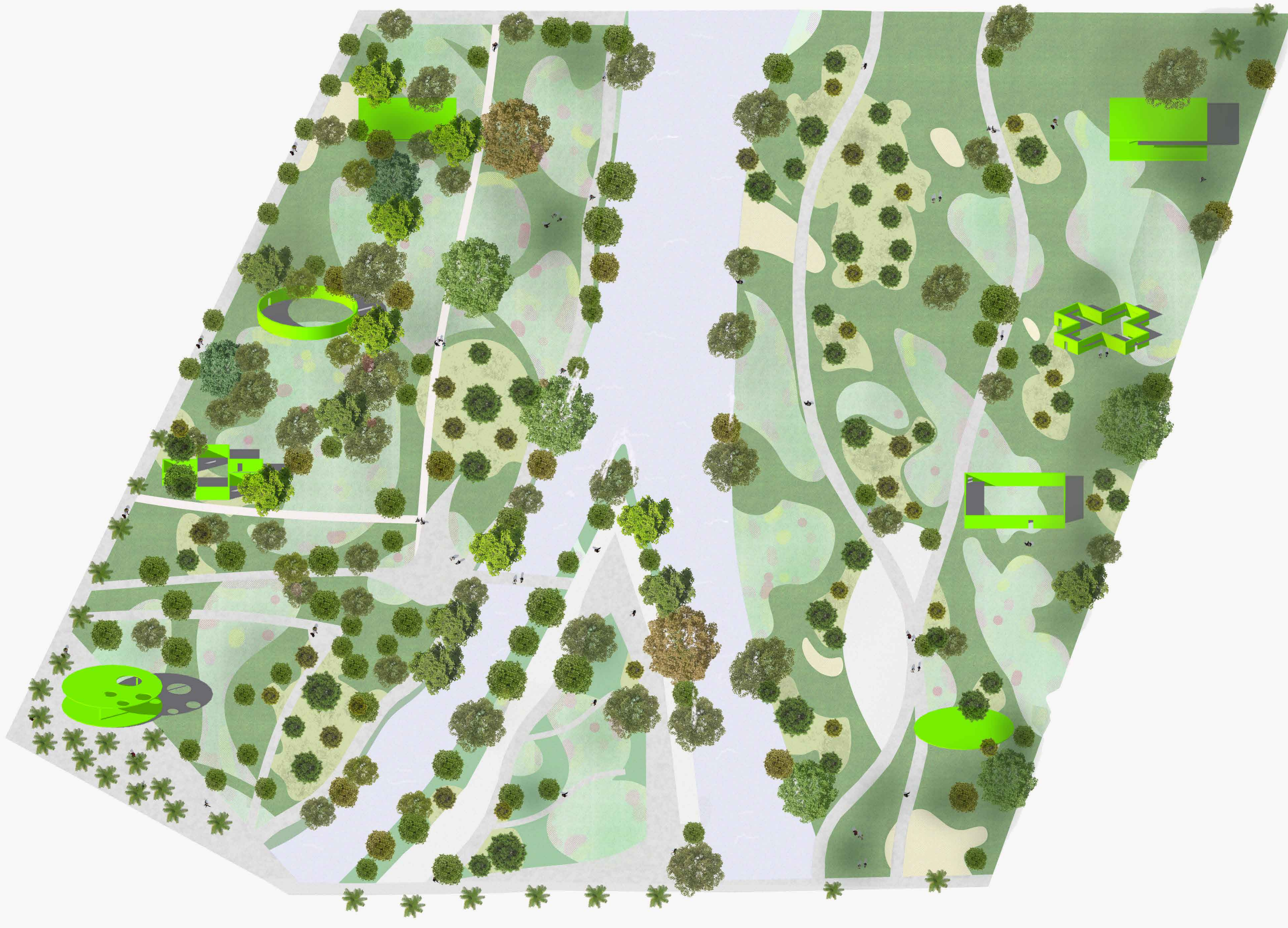
Artefact of Square Floor



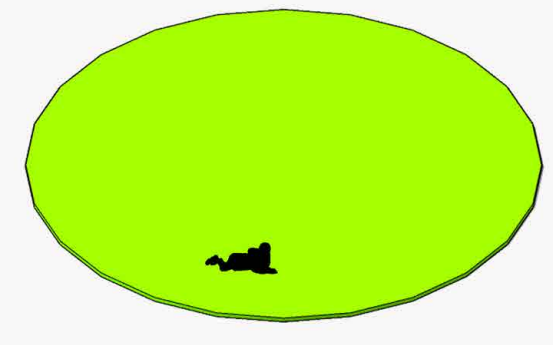
Current Condition Landscape



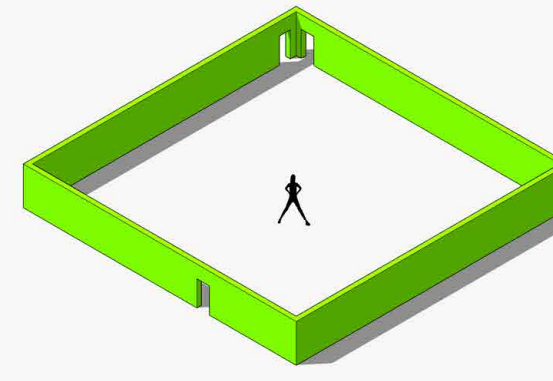
Prairie Landscape



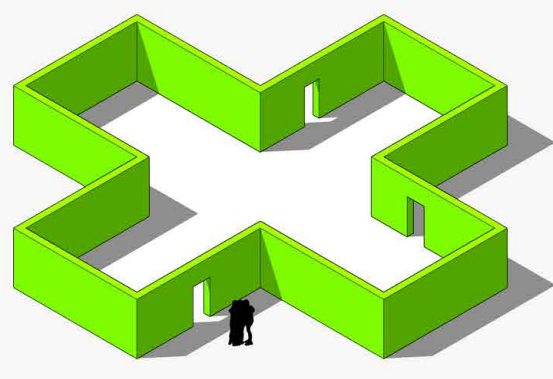
SITE PLAN



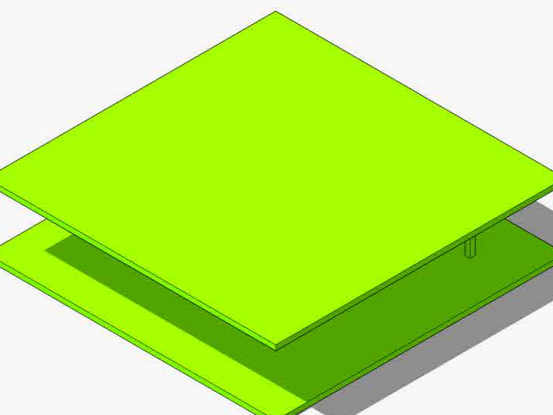
Artefact of Circular Floor



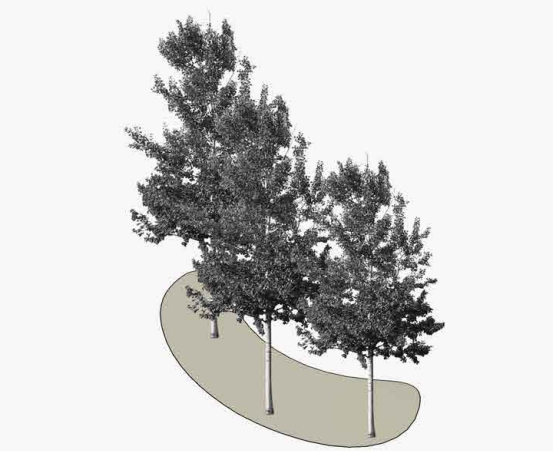
Artefact of Square Wall



Artefact of Cross Wall



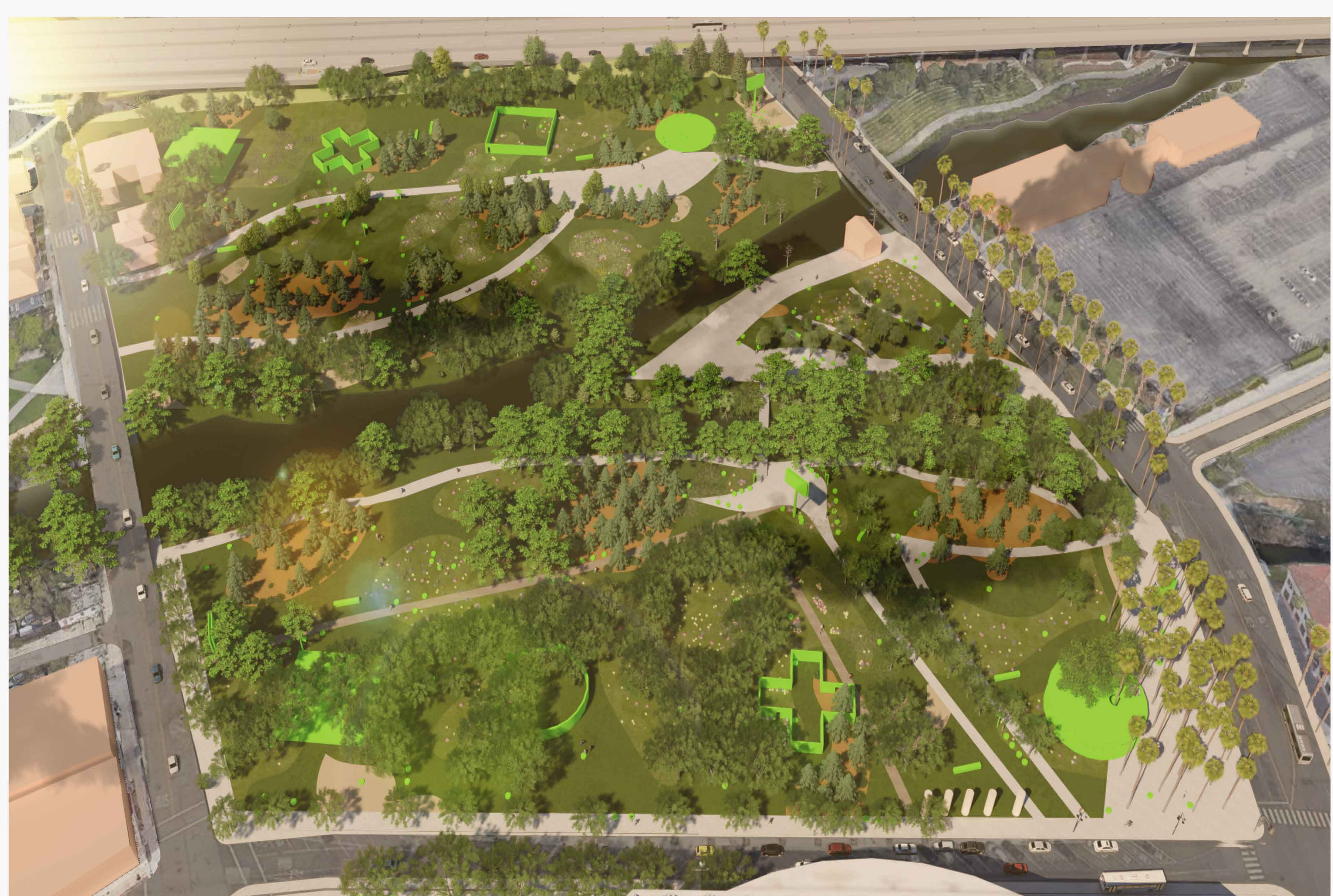
Artefact of Square Roof and Floor



Forest Landscape

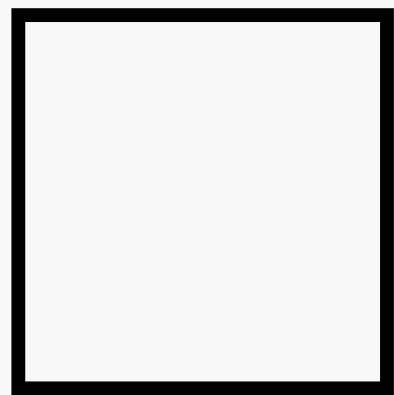


Semi-Araid Landscape



AERIAL VIEW OF THE PARK FROM SAP CENTER

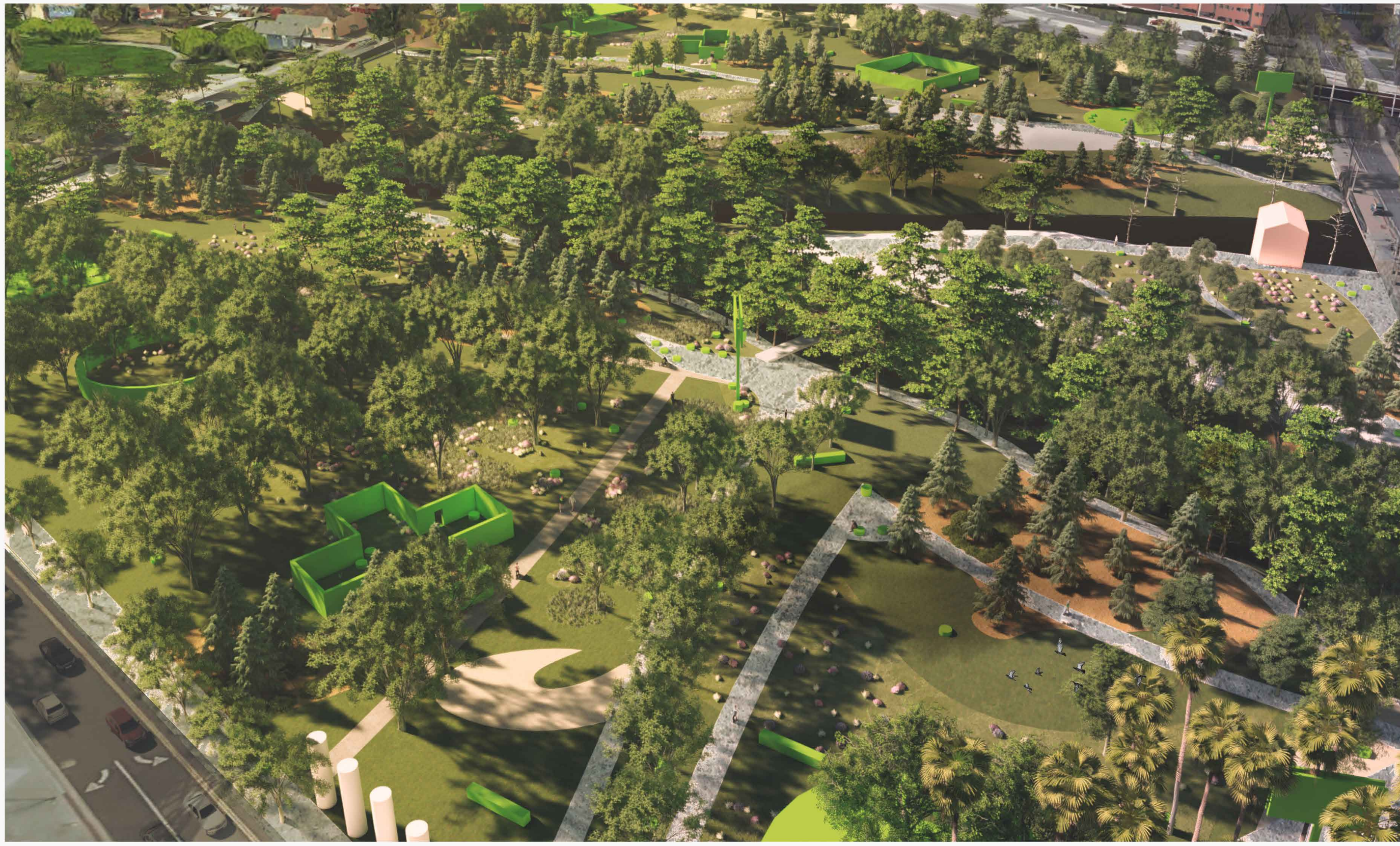
ARTEFACTS OF VIRTUAL REALITIES



On this board the views on the side, they have been separated by the middle. On each side, you will see a view of reality and the other of virtual reality. Every artefact will become interactive by using the technology of an smartphone or any other device. The main idea is to developed an application for the park, where they can information about the area. Also you can other apps for creating the virtual reality that you want. Any image of the internet can be use as wallpaper for any object. On the views of the middle, there are wide view about how the project will see in general way one as diagram and the other as image of how is going to look like. This proposal Artefacts of Virtual Realities contains eight elements that are different forms that interact with their context. These elements contain spaces or perspectives of the surroundings. It has different types of interaction, some with the sky, others with their perspective or with their form. The dimensions of this elements are of 40 ft wide. These shapes are going to have green fluorescent panels that glows in the dark and also is going to be painted green. It also has project of landscape that shapes the site with a different pattern that infuses with was there before. These landscapes are going to be representative of the environment of California.



Artefacts of Basketball Court



AERIAL VIEW OF THE PARK FROM N AUTUMN STREET



Walkway with Billboard Artefact



Outside of Circular Roof and Floor Artefact



Basketball Court Artefact



Inside of Circular Roof and Floor Artefact

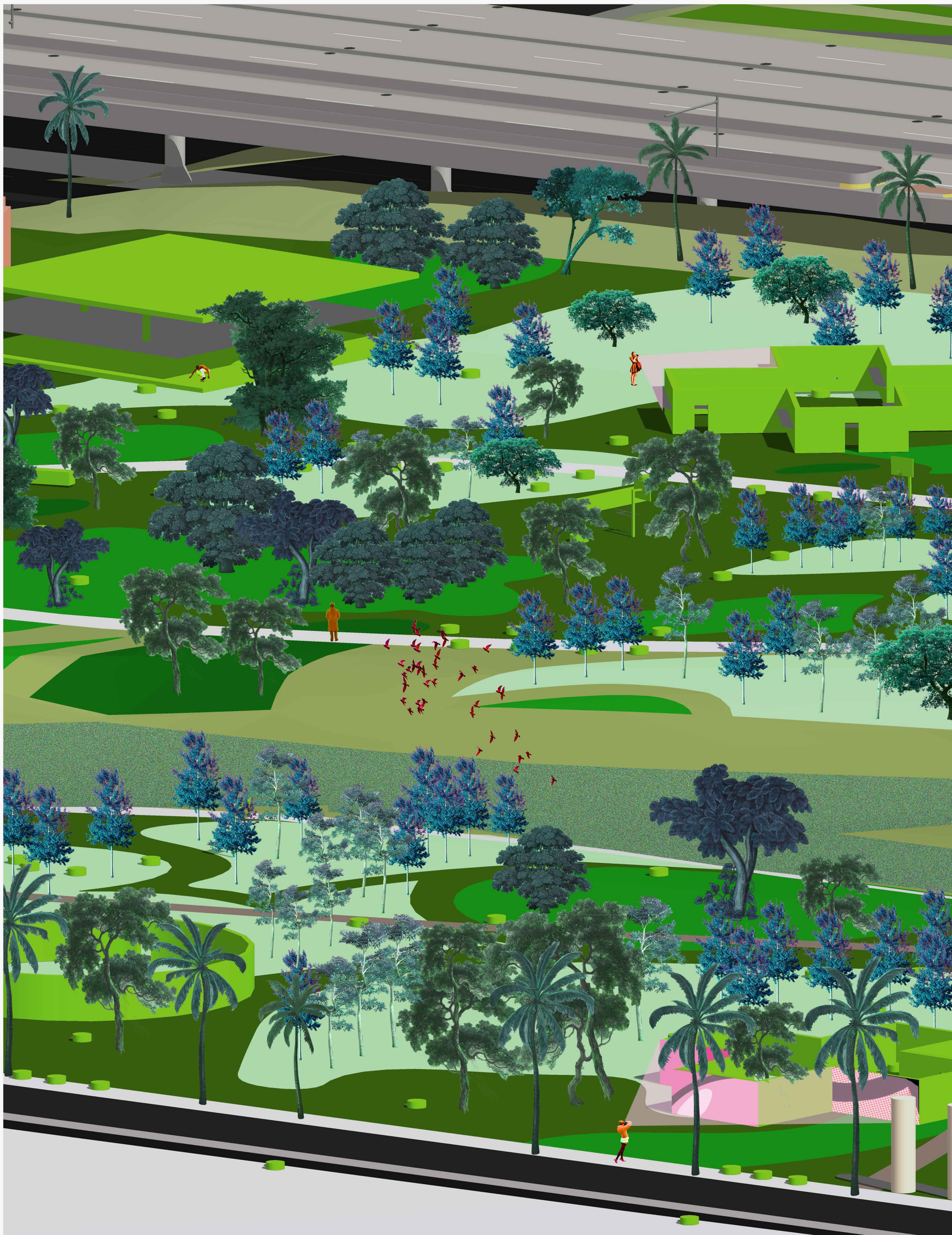
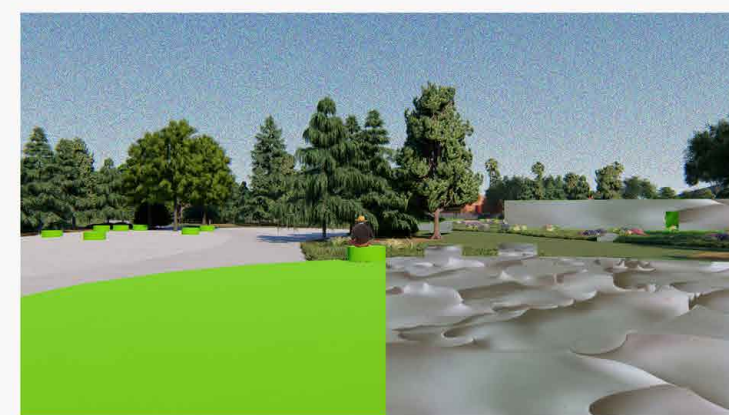


DIAGRAM OF THE LANDSCAPE AND ARTEFACTS



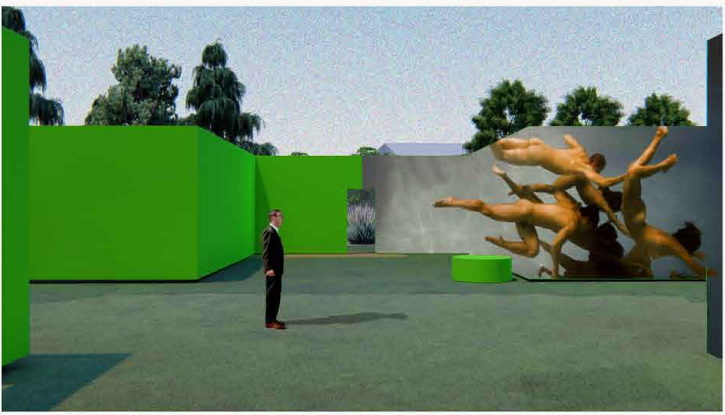
On the Square Floor Artefact



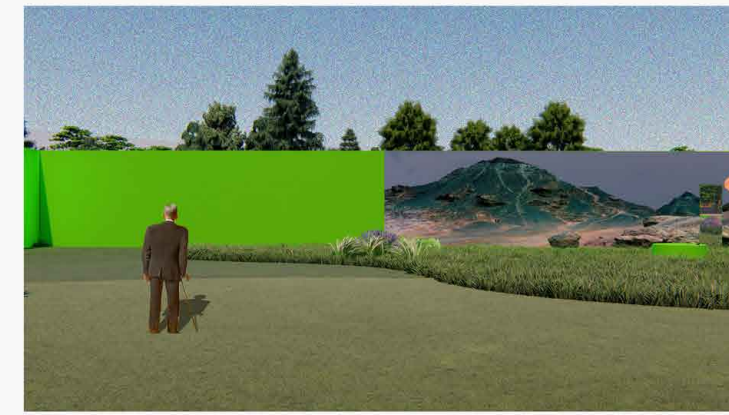
Inside of Circular Wall Artefact



Outside of Square Wall Artefact



Inside of Cross Wall Artefact



Inside of Square Wall Artefact



On the Square Floor Artefact



Inside of Square Roof and Floor Artefact