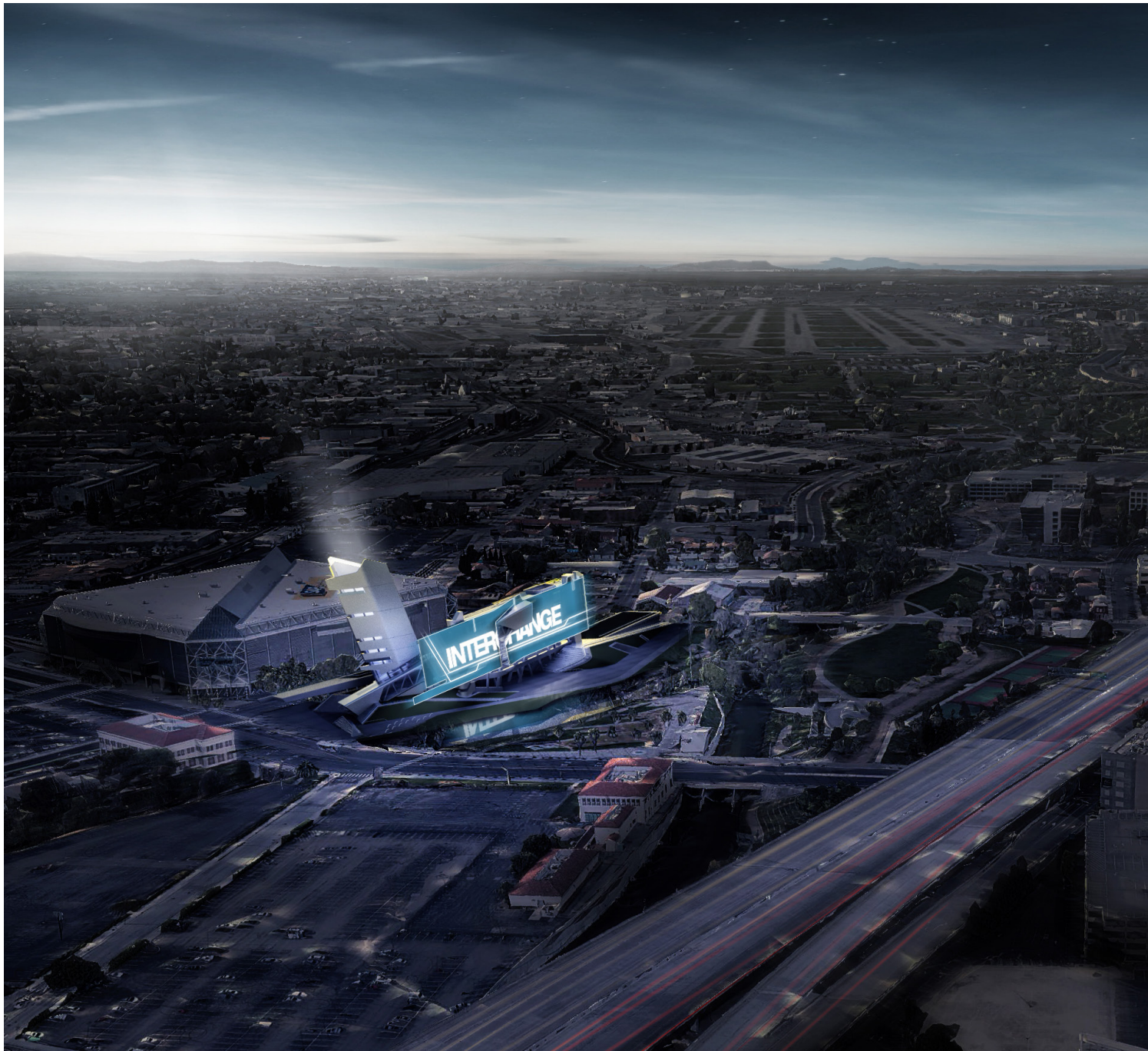




INTERCHANGE

L I G H T   T O W E R   C O M P L E X   O F   S A N   J O S E



The museum atrium defines the interior experience by creating a sculptural staircase to anchor the otherwise long floor plates. From both the interior and exterior, this space acts as an "Oculus" or eye both into and out of the project.

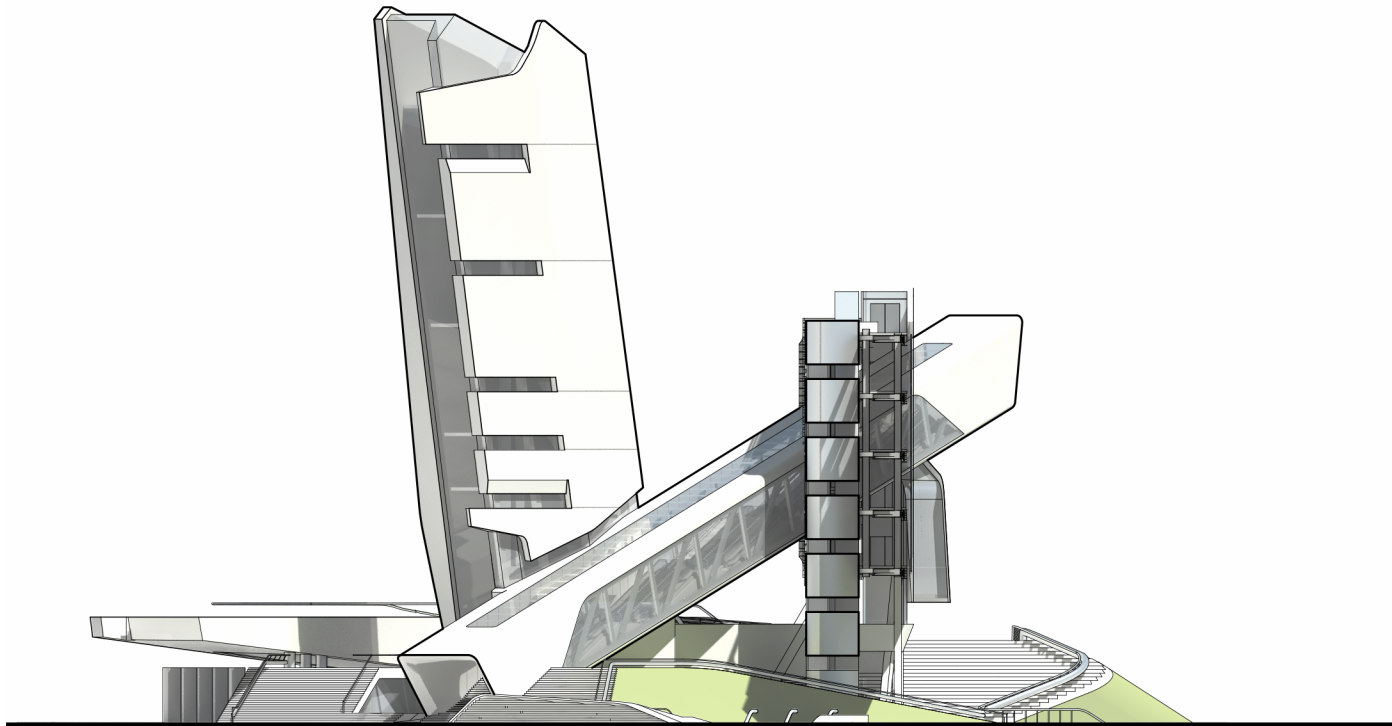


SITE DIAGRAM

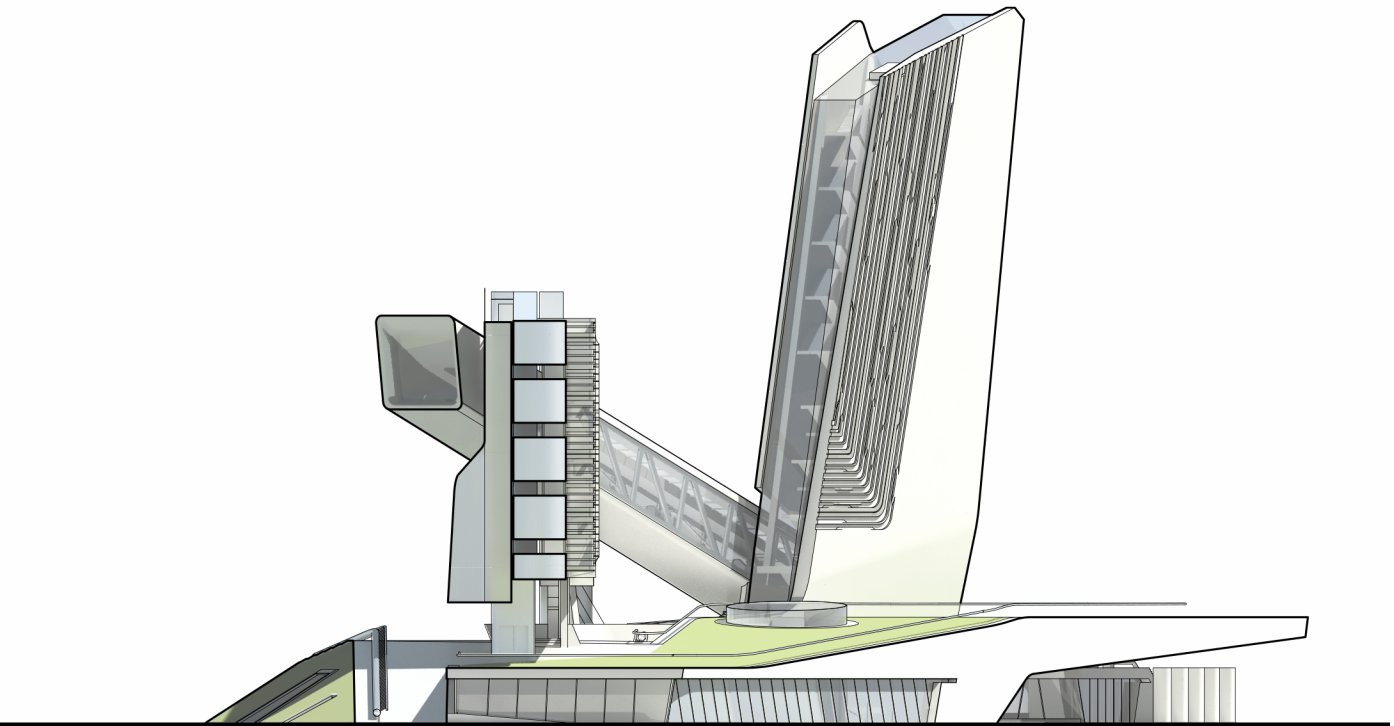
Heavily influenced by its surroundings and history, this project recognizes the modern San Jose that exists as a unique byproduct of interplay between cultural and technological developments. These new technologies and their effect on media have revolutionized the way we think, feel, and live, ultimately forging a vastly interconnected society. Interchange intends to do the same.

The project title *Interchange* refers simultaneously to the interconnectivity of technology, the site condition at the confluence of two rivers, and the connectivity of the proposed architectural intervention with the greater area of San Jose. The design is a transformative symbol demonstrated through sculptural architectural moments, dramatic lighting effects, and integrated mixed-use program, producing a new urban identity with an "impressive physical presence that will become a powerful and enduring symbol of how Silicon Valley operates as a bridge from past to present to future."

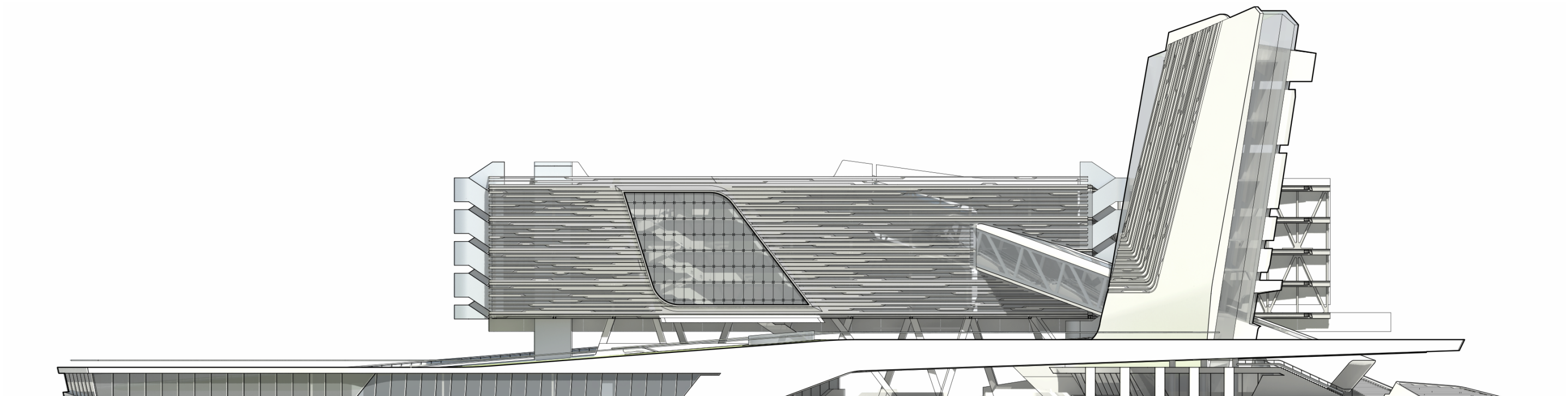
The following proposal represents merely one manifestation of these ideals for the site at Confluence Point. It is an idiosyncratic response to the profound power of the site, providing the City of San Jose with a cutting-edge icon borne out of respect for its heritage at the helm of tech.



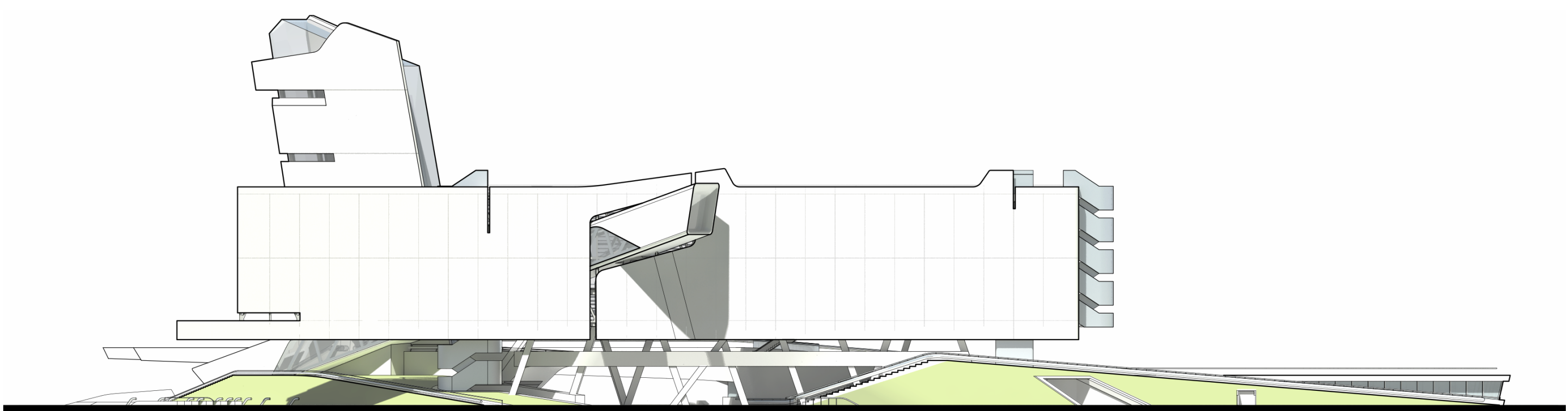
ELEVATION SOUTH



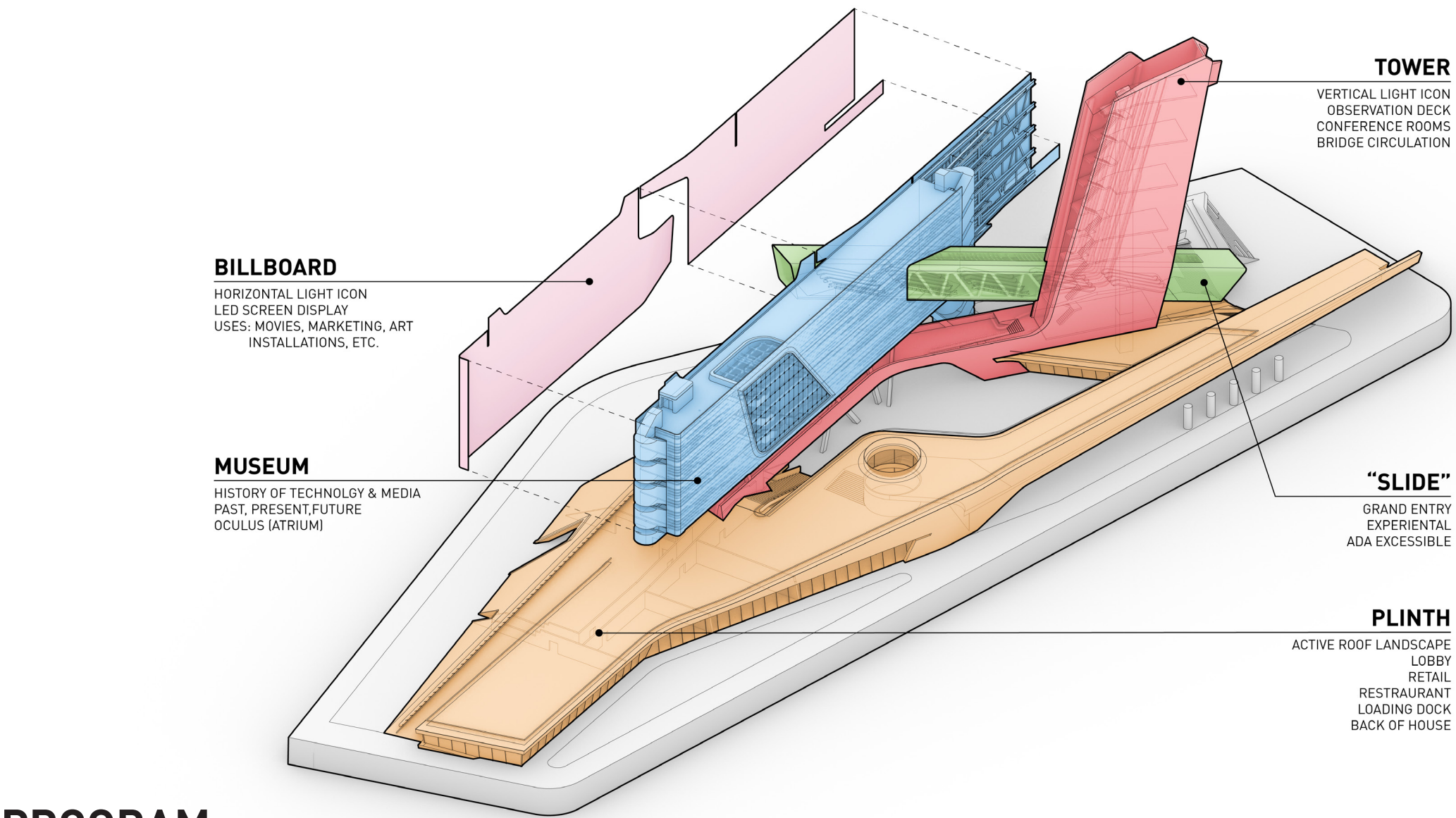
ELEVATION NORTH



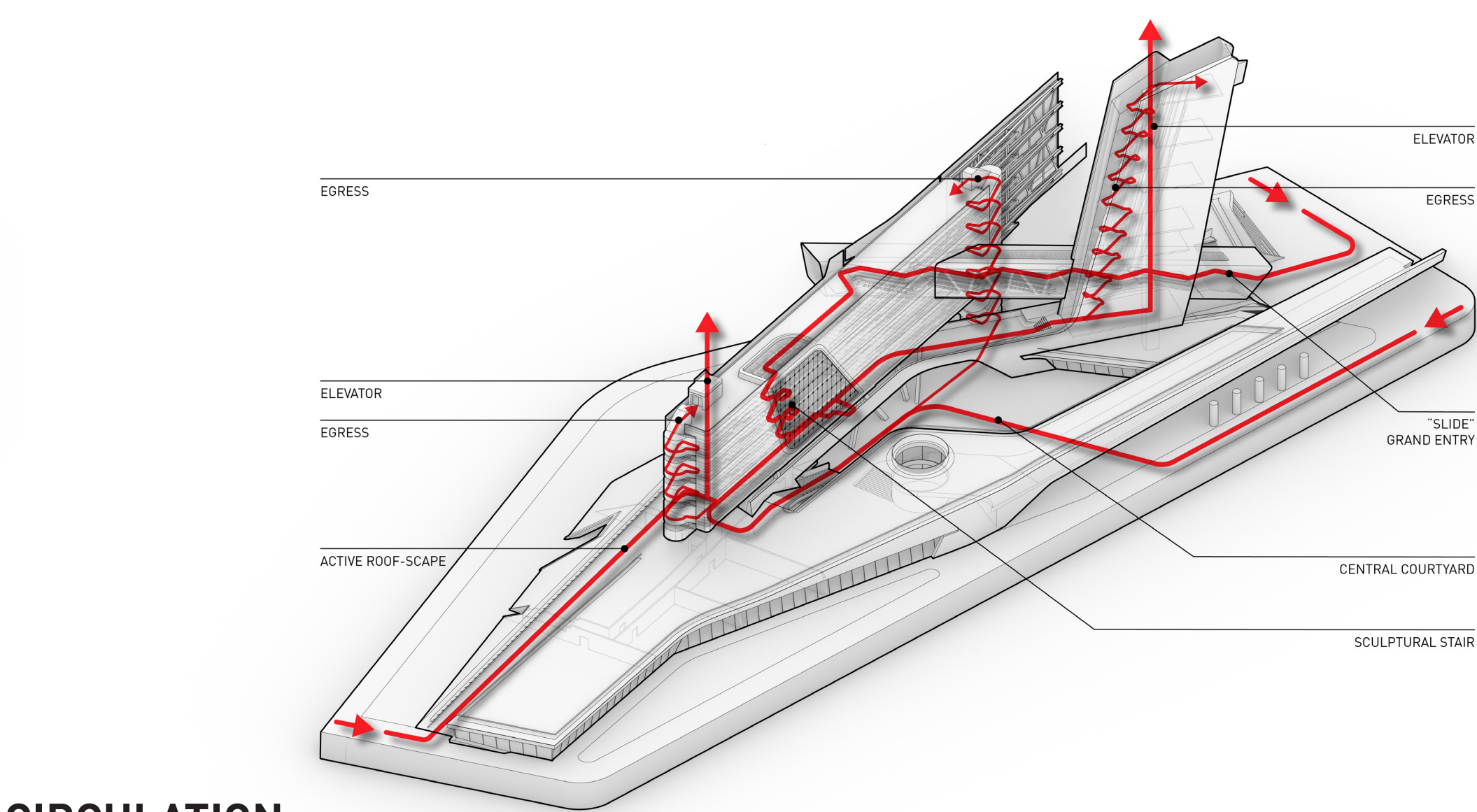
ELEVATION WEST



ELEVATION EAST

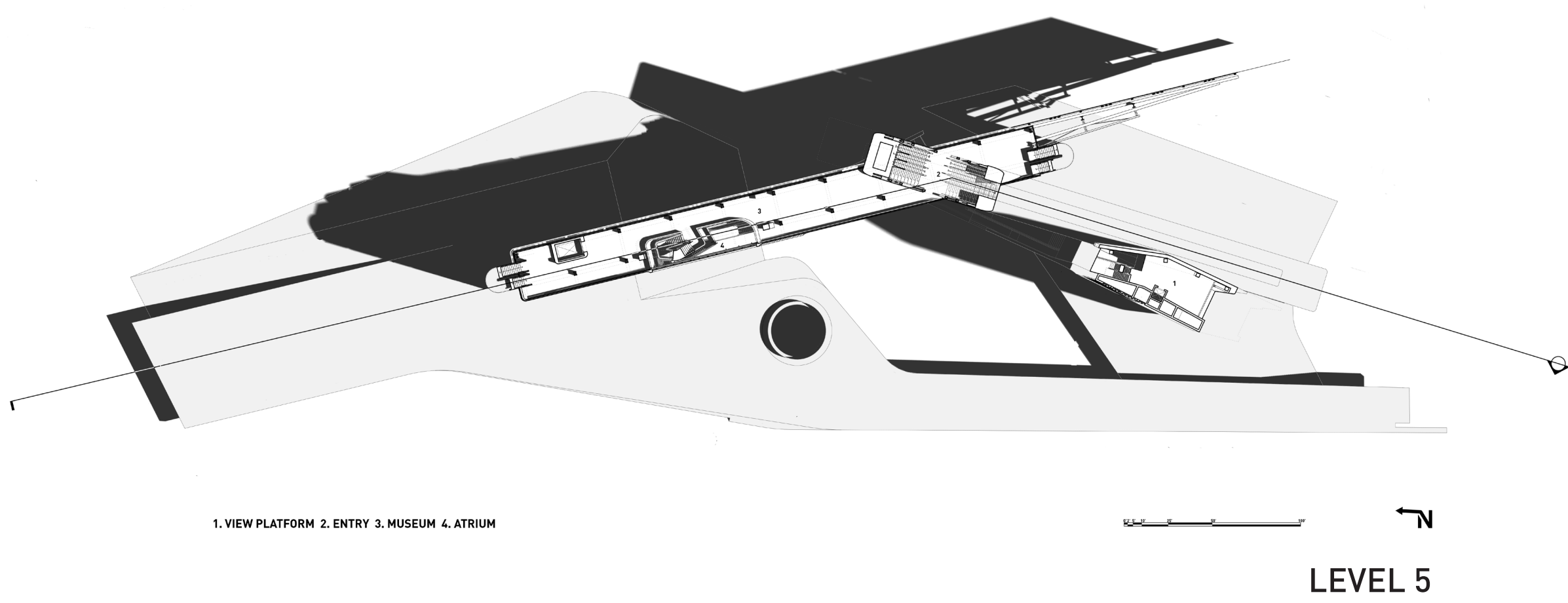


PROGRAM

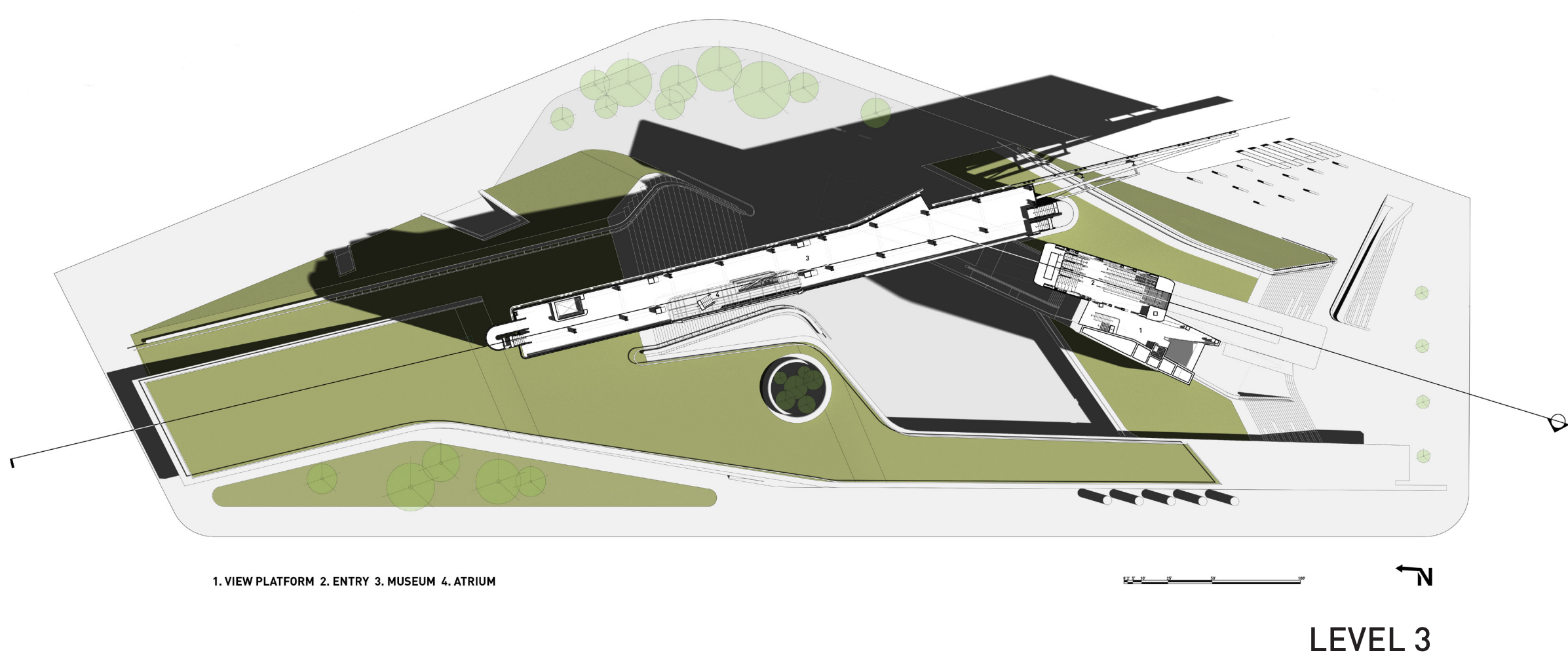


CIRCULATION

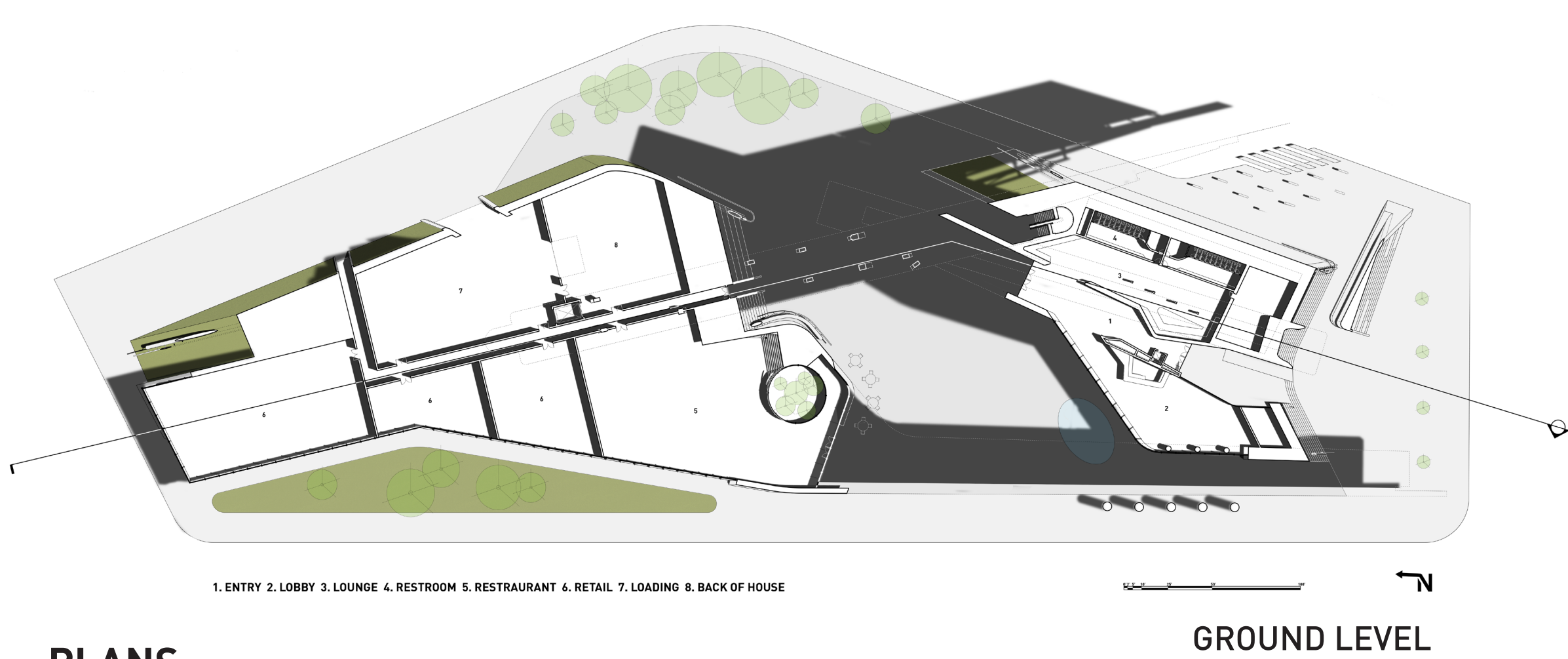




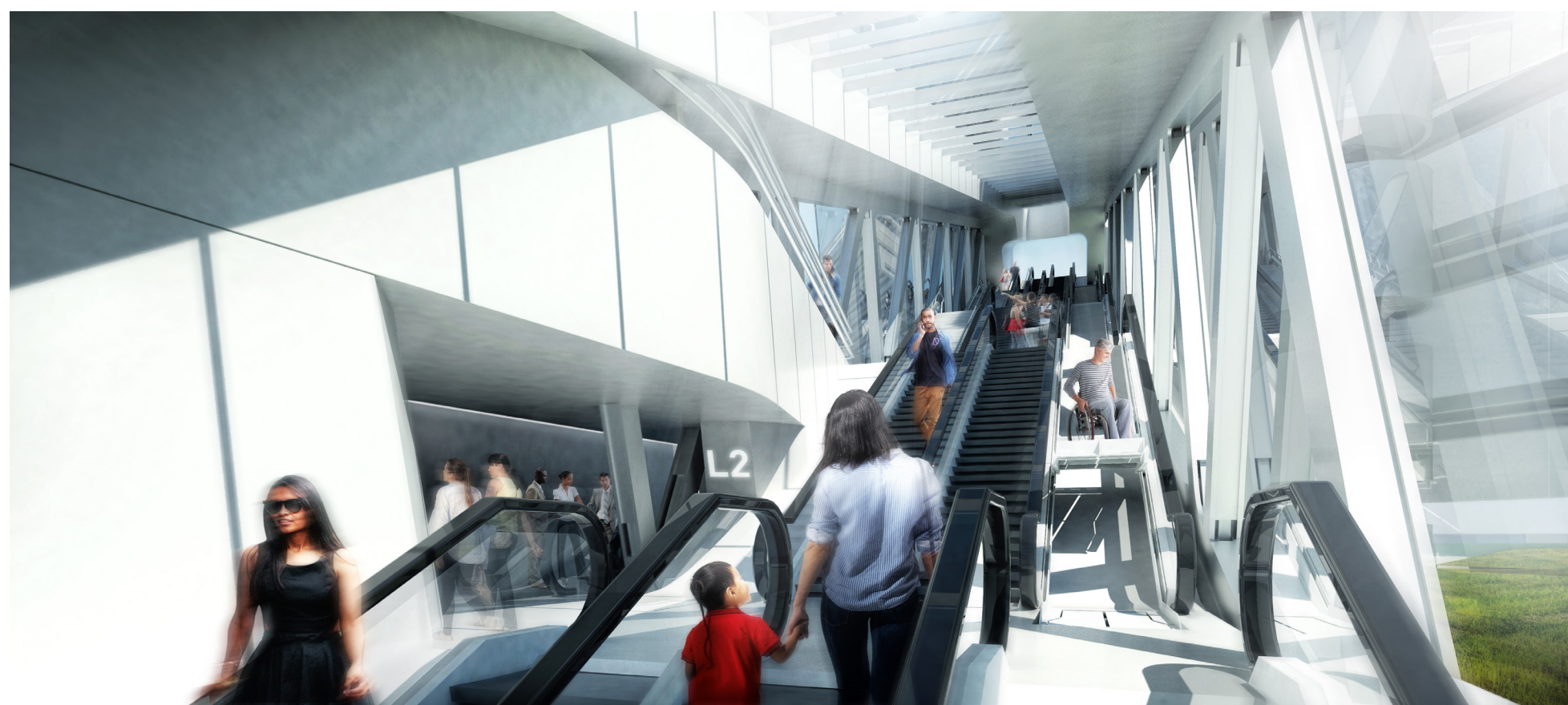
LEVEL 5



LEVEL 3

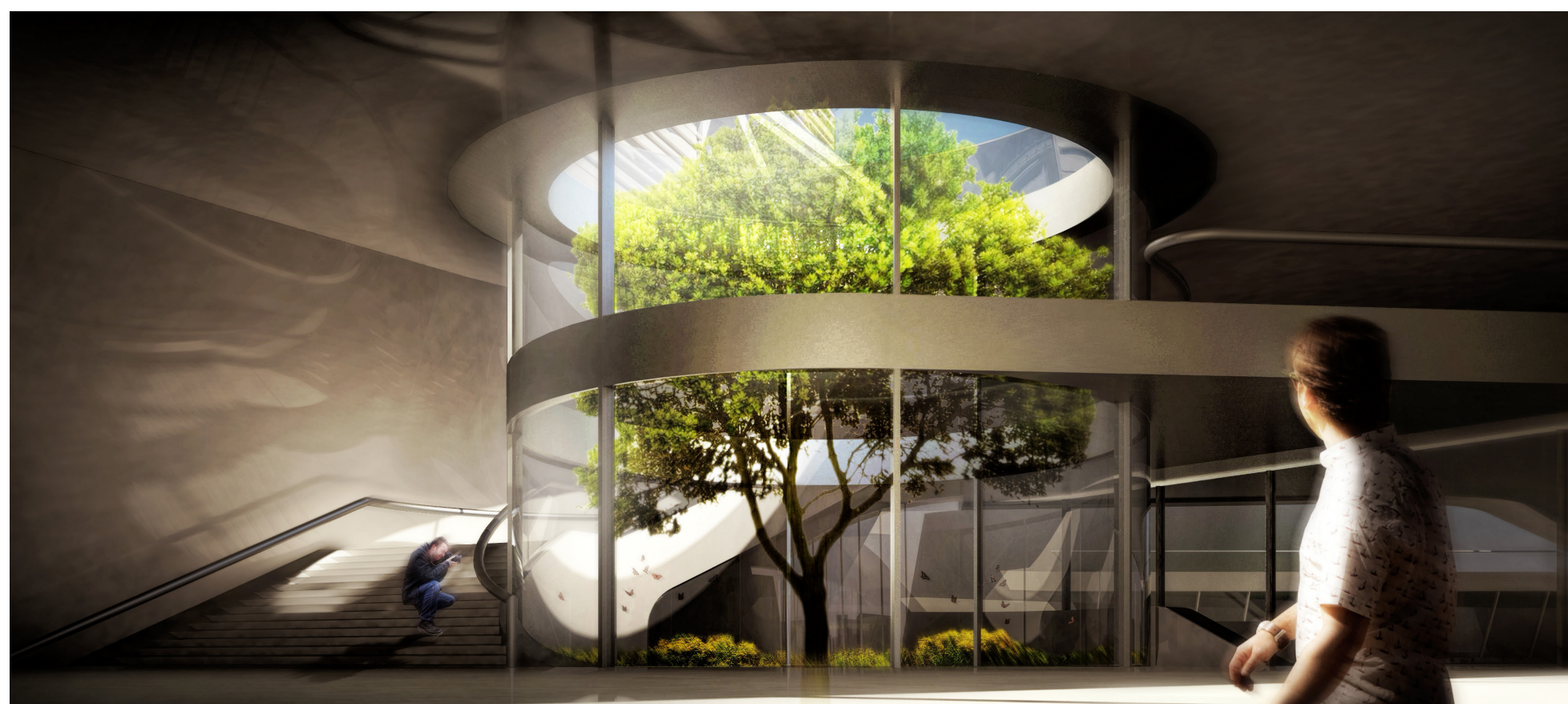


PLANS



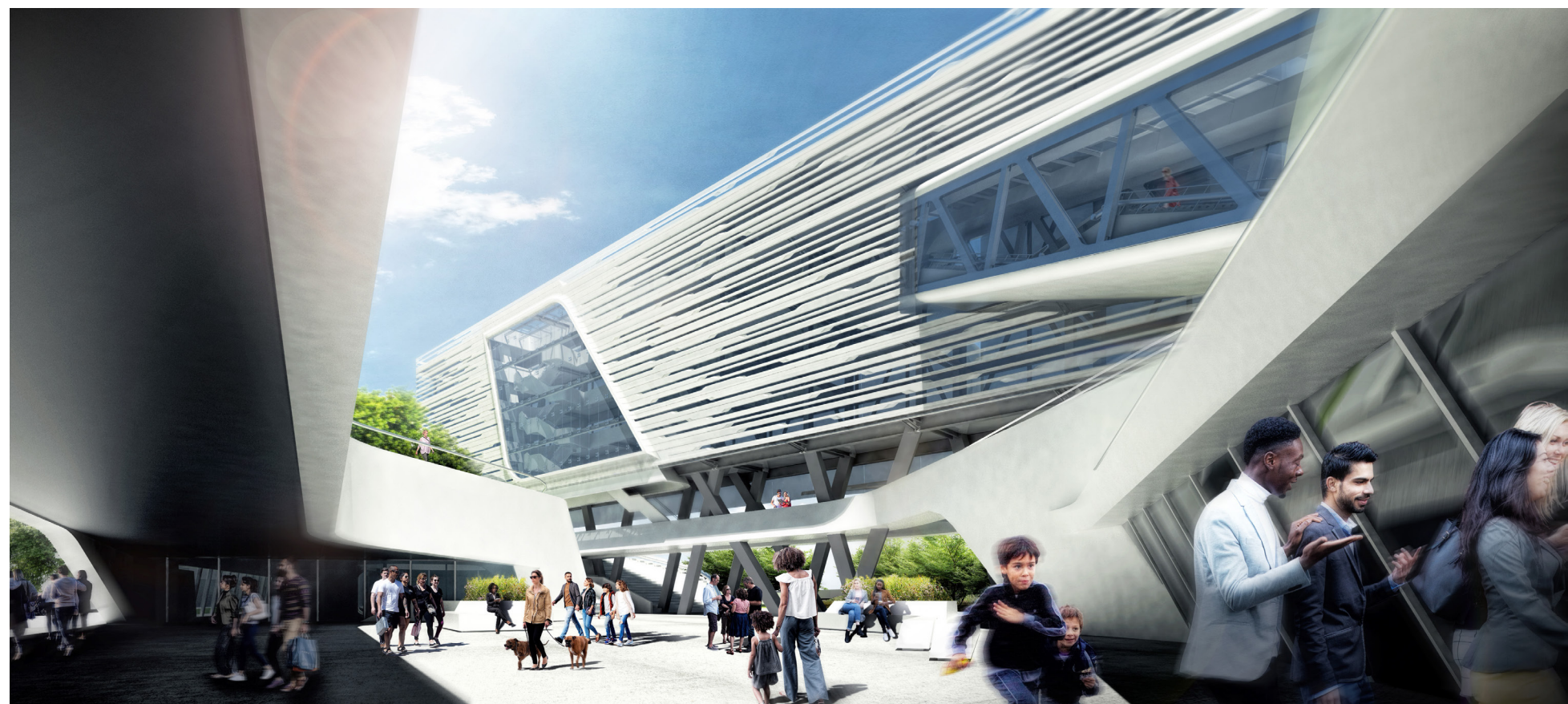
GRAND ENTRY

The "Slide" acts as a portal, sending users on an experiential ride from the ground level of the site to the lobby on the top floor of museum, inverting the timeline of experience from past, present, future to future, present, past.



INTERIOR TREE GARDEN

Carefully place architectural elements to preserve and enhance the natural landscape of the site and blend the relationship between interior/exterior space and natural/artificial space.

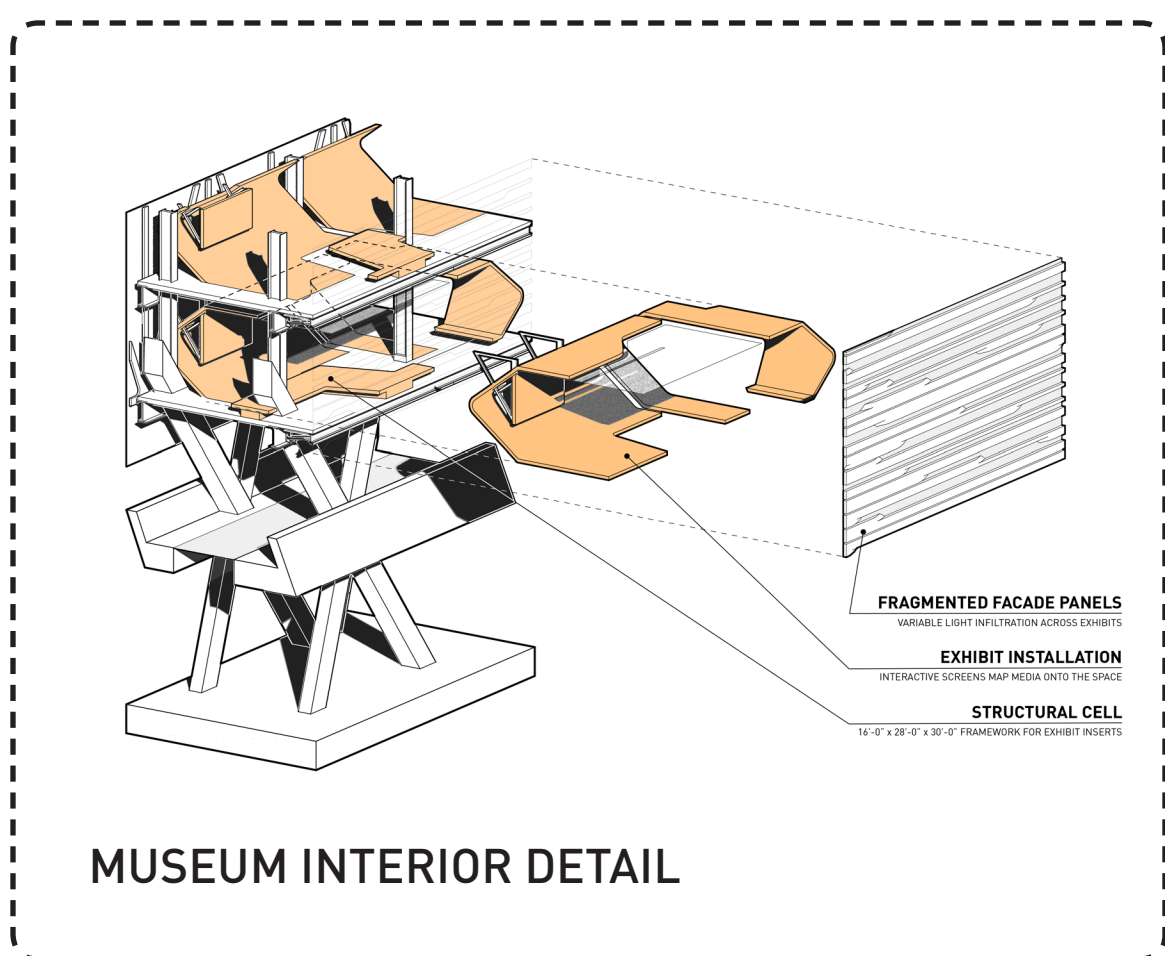


COURTYARD PLAZA

The use of a courtyard creates a site within a site and acts as central node for wayfinding and gathering.

SECTION

1. SLIDE (GRAND ENTRY)
2. MUSEUM
3. ATRIUM (THE OCULUS)
4. COURTYARD
5. MUSEUM STORAGE
6. LOADING DOCK
7. COMMERCIAL/RETAIL
8. TOWER OBSERVATION DECK



MUSEUM INTERIOR DETAIL