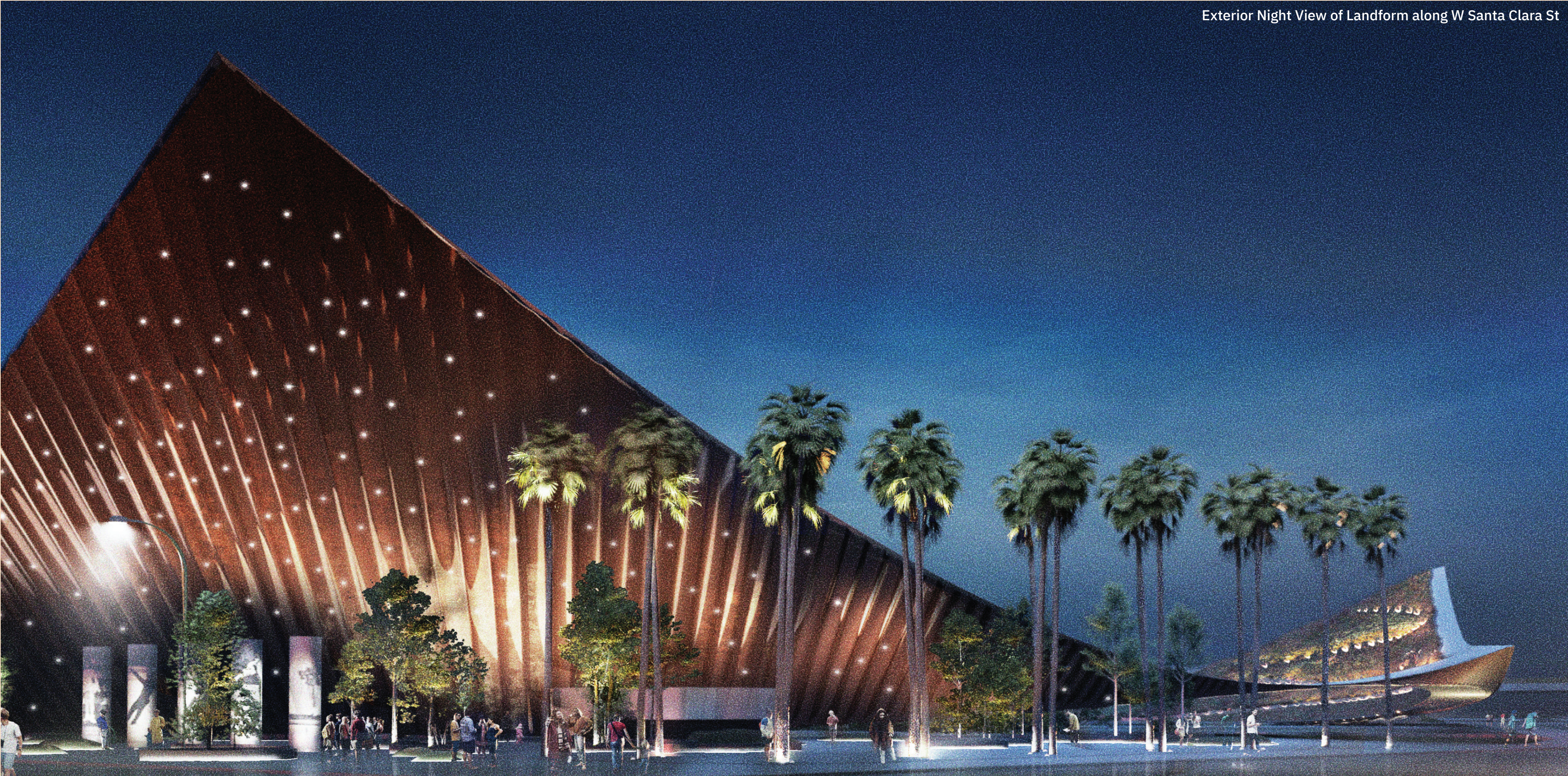




Exterior View of Landform from N Autumn St

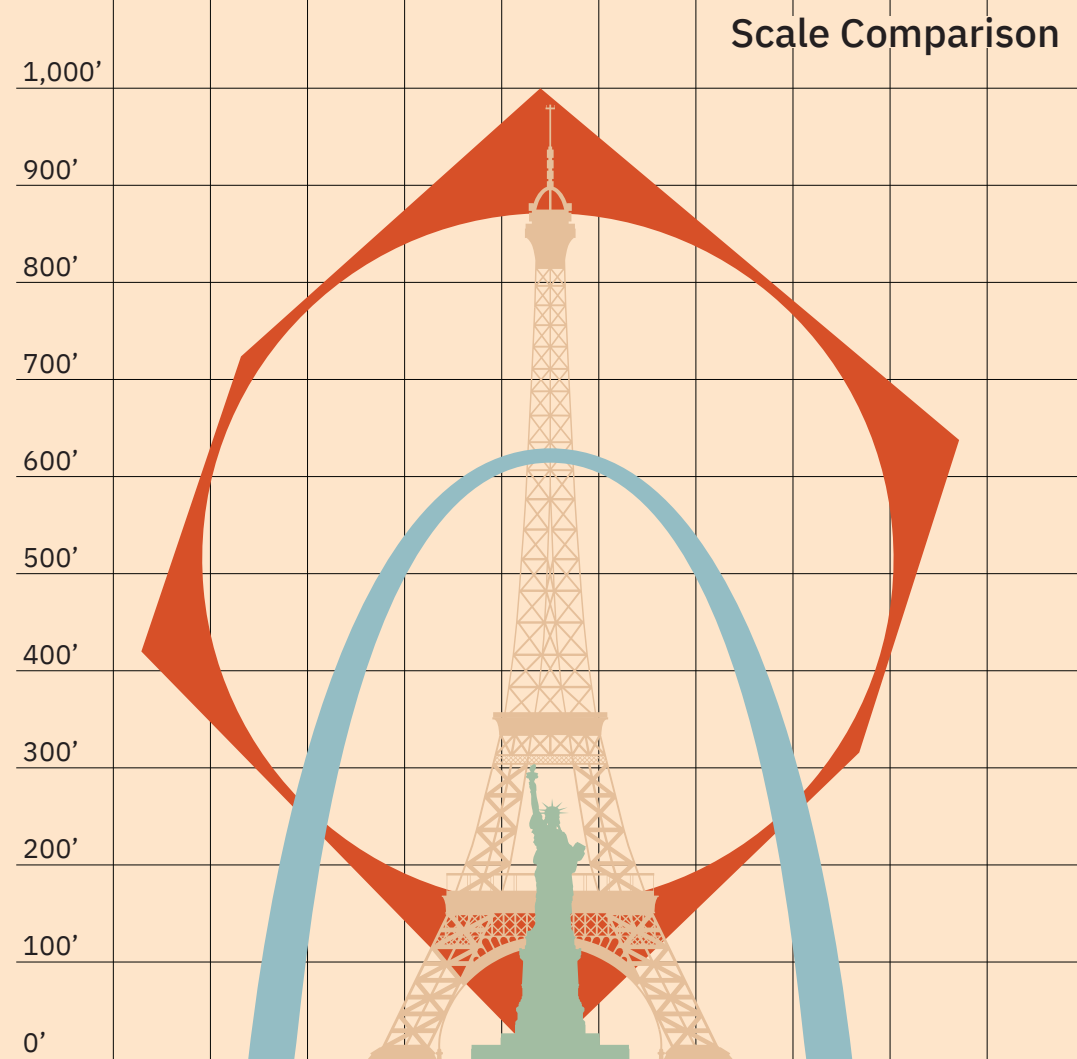
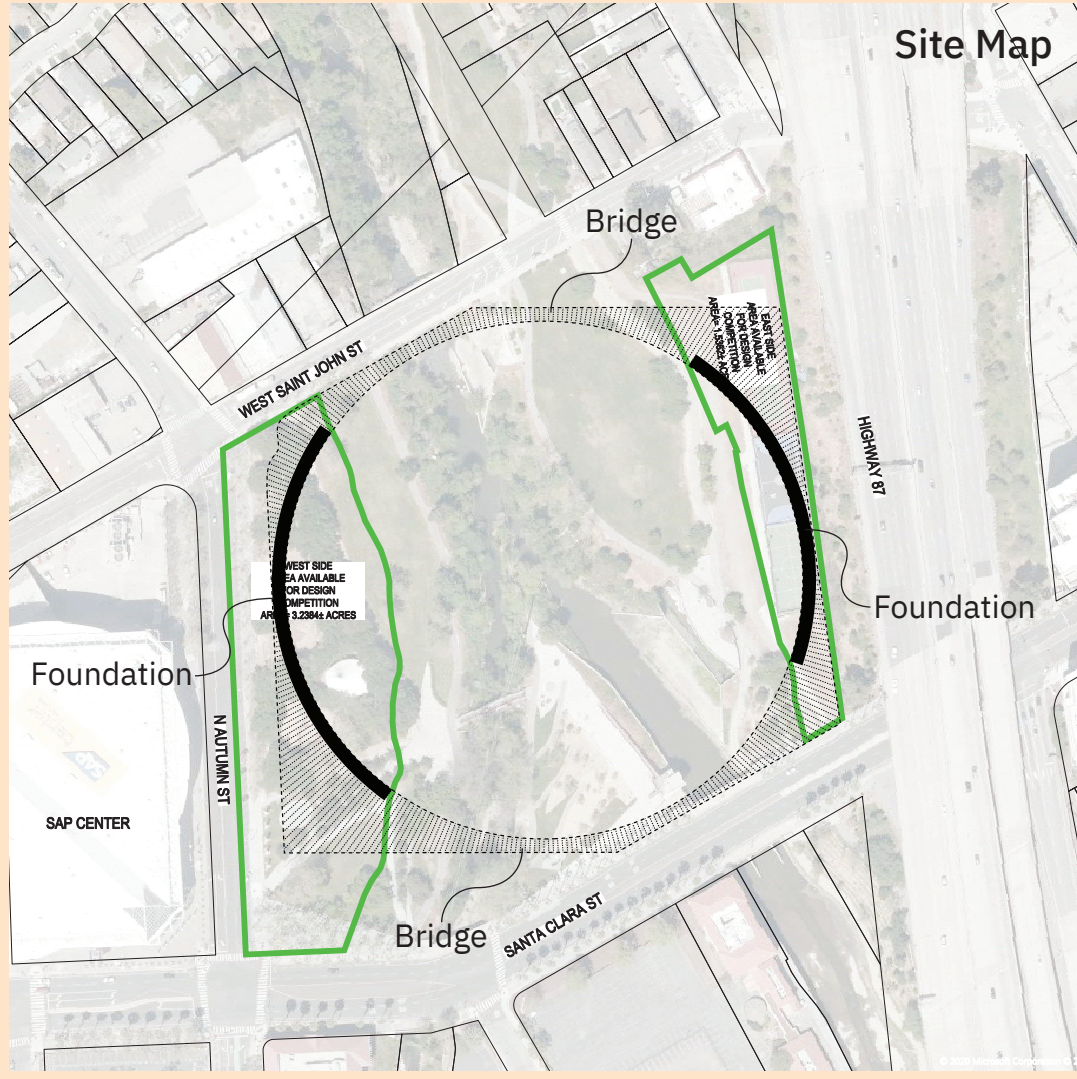


Exterior Night View of Landform along W Santa Clara St



LANDFORM
Project Summary

California is home to nine national parks. It is the experience of a preserved natural world which constitutes the state's greatest monuments. In envisioning a monument for San Jose, the Landform eschews an object in favor of the inherent monumentality of a natural landscape. A new monument asks less of what should be built, but rather what should be celebrated – San Jose's splendid natural landscape. A monumental public park becomes a new center for the city. Landform merely transcribes an excerpt of a found landscape - effortlessly evoking the timeless monumentality of nature. Sloping peaks, planted with polychromatic compositions of native grasses and flowers, encircle the undisturbed ecology of Confluence Point. Poppies anticipate the spectacle of an urban superbloom every Spring. Landform is an immersive civic space for everyday use. It nurtures a raw engagement with nature and juxtaposes a natural icon to San Jose's urban skyline.





View of Landform from inside the Garden at Confluence Point

View of San Jose from Landform Slope Trail During a Superbloom

