



## **Project submittals MUST contain the following files:**

### **1. Design Presentation Board File:**

Project submittals MUST contain one (1) PDF file containing two (2) boards with project information including the official Site Map Image (See Below). Your Site Map Image can be any size you like on the Design Presentation Board.

Submitters are encouraged to submit plans, sections, and perspectives (renderings), but those who do not supply these items will NOT be disqualified.

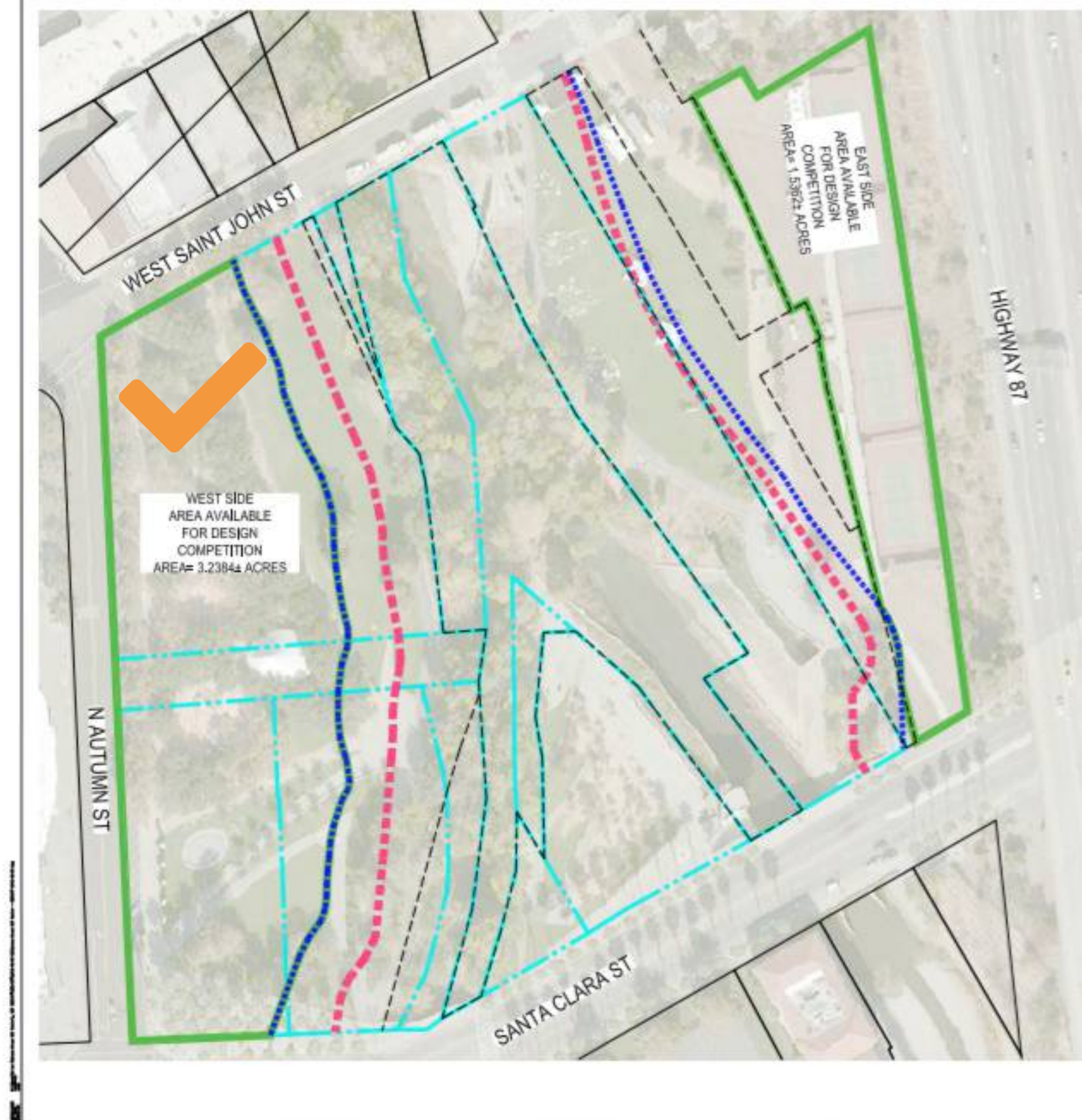
Submitters are encouraged to submit all the information in this presentation they consider necessary to fully explain their proposals. Words describing submissions are permitted on the Design Presentation Boards.

The two boards must be in either HORIZONTAL or VERTICAL format. The resolution of the boards must be a minimum 300dpi and saved as one PDF file.

There are 2" x 2" empty boxes in the upper right-hand corners of the two boards, which the competition will use for numbering. Submitters must leave these boxes empty.

This PDF file must be named **DesignPresentationBoard.pdf**





The need for a modern design was paramount but local Spanish colonial architectural style was also an influence for the concept. The fusion of the structure with the natural environment must have a subtle but powerful synergy. Thus the main structure was expanded into a garden plaza where events could be hosted (Seen below). The orange check mark indicates the location on the map to the right.

Solar Energy would seem to be the most feasible and aesthetic option for any design. The angled sides of the hanging garden complex could be fitted with monocrystalline solar cells. In addition, Energy could be routed from a solar farm that could replace the current tennis courts across the corridor (or possibly be integrated with them to also provide shade to the court's users).

Sailing ship inspired central "tower" of 150 ft could be placed adjacent to the courtyard complex. Although not pictured here, it could be the launching platform of a theoretical enclosed aerial lift for park goers to view the San Jose skyline. This is of course only theoretical because the current treeline could likely obscure the view and would be something to confirm in the next phase if used.





