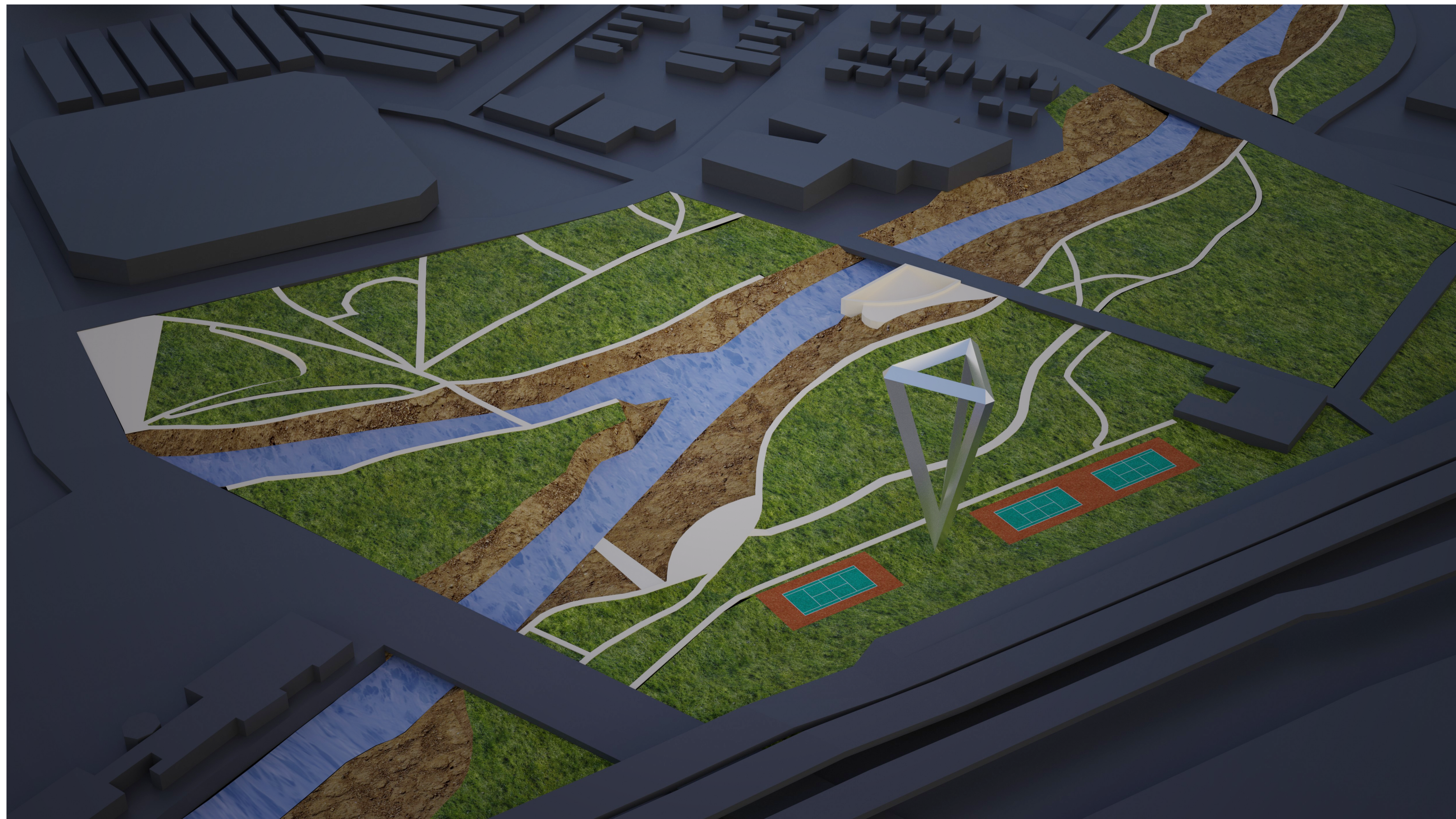
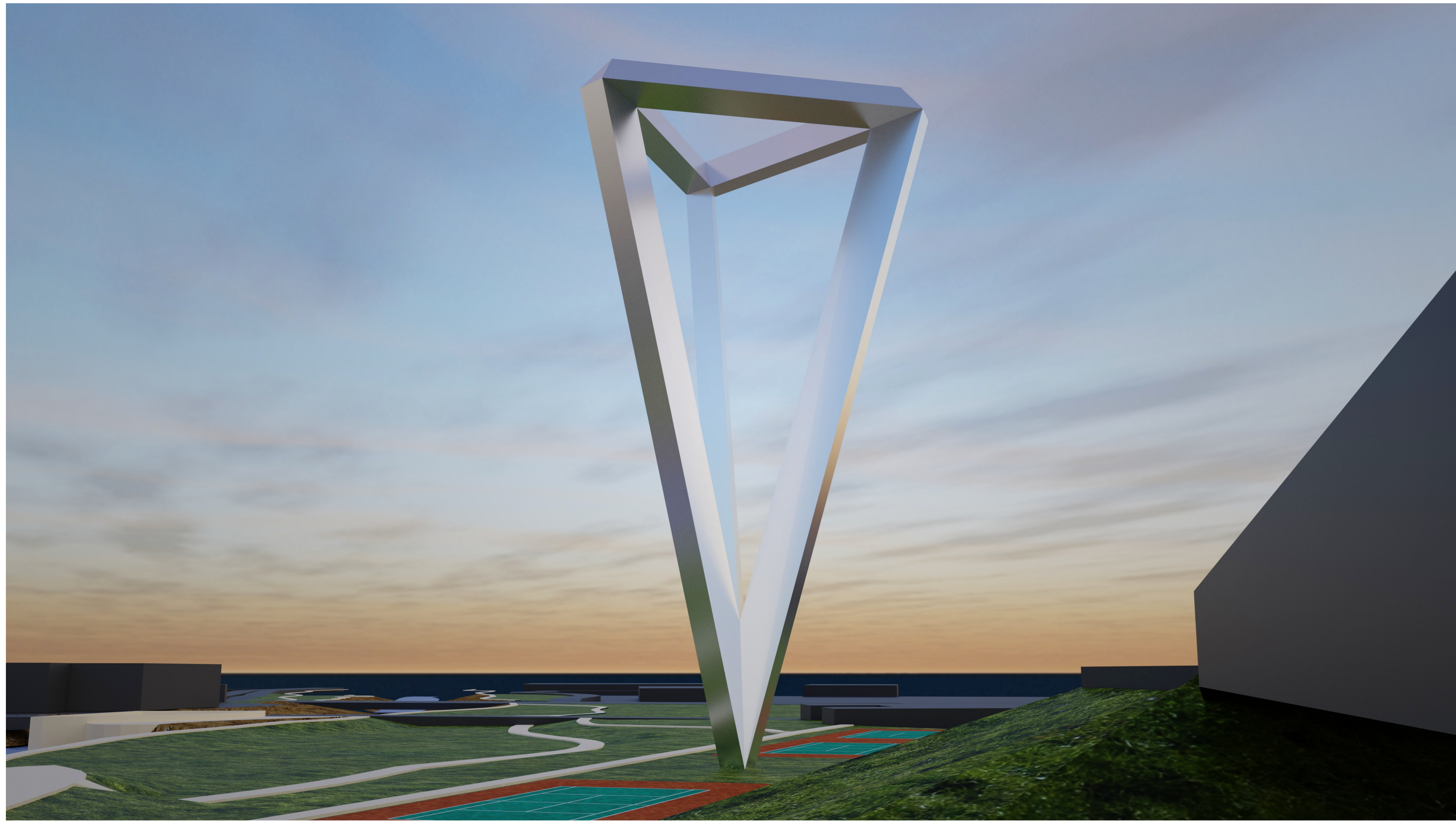


you ARE HERE



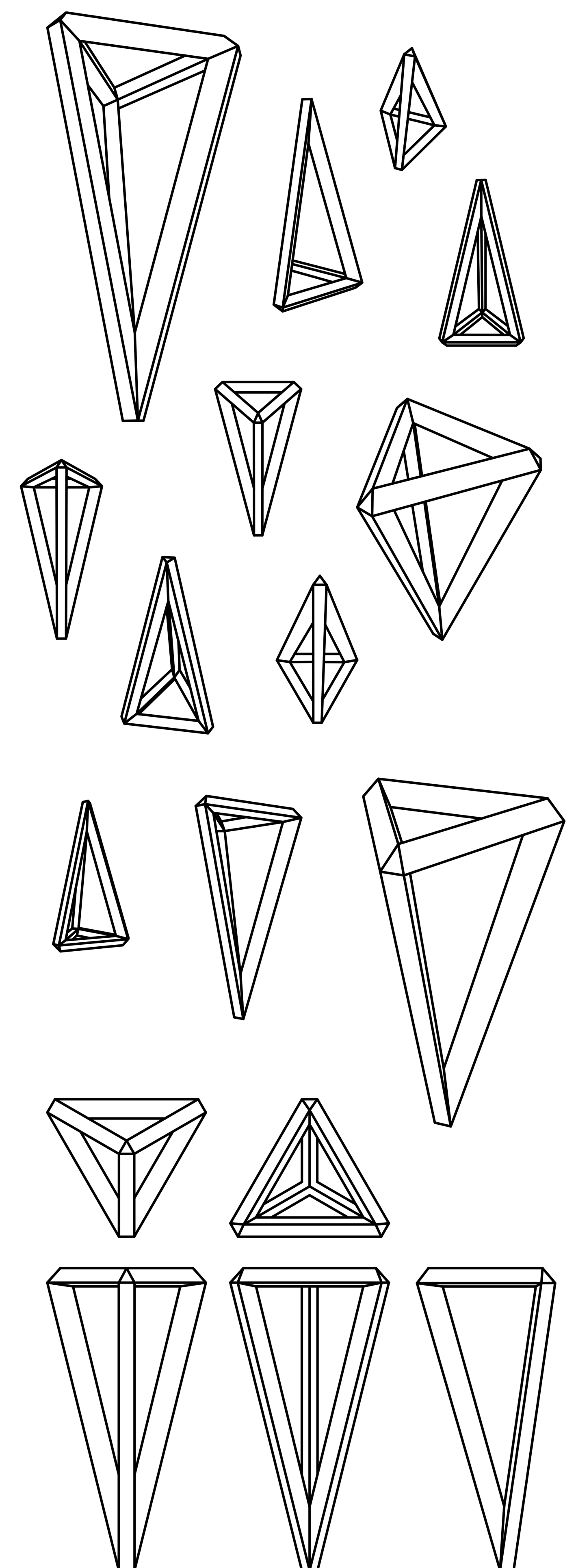
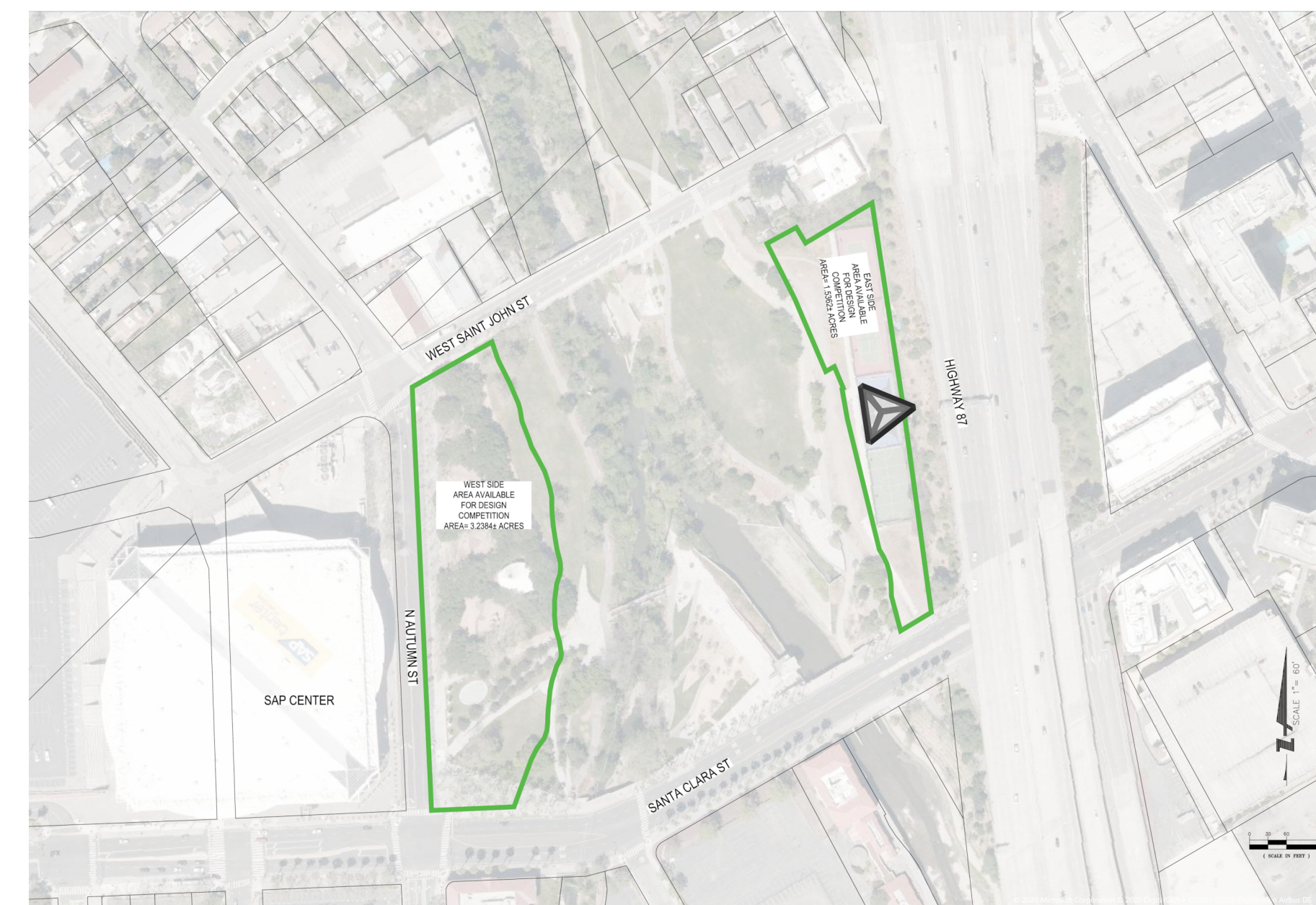
Victory grows up!

The ghost bells toll for the city
To call it's lost spirituality
By wireless telepathy

On labyrinthine roads to find an exit
Every inches are processed to knit
A life is created without any spirit

A diamond is dreamed falling from the deep sky
To be surrounded by the gentle birds' cry
To make all strong and to jollyfy

Once upon a time city's children sow a seed
A gigantic tree grows as their shield
To lighten the kind-hearted breed

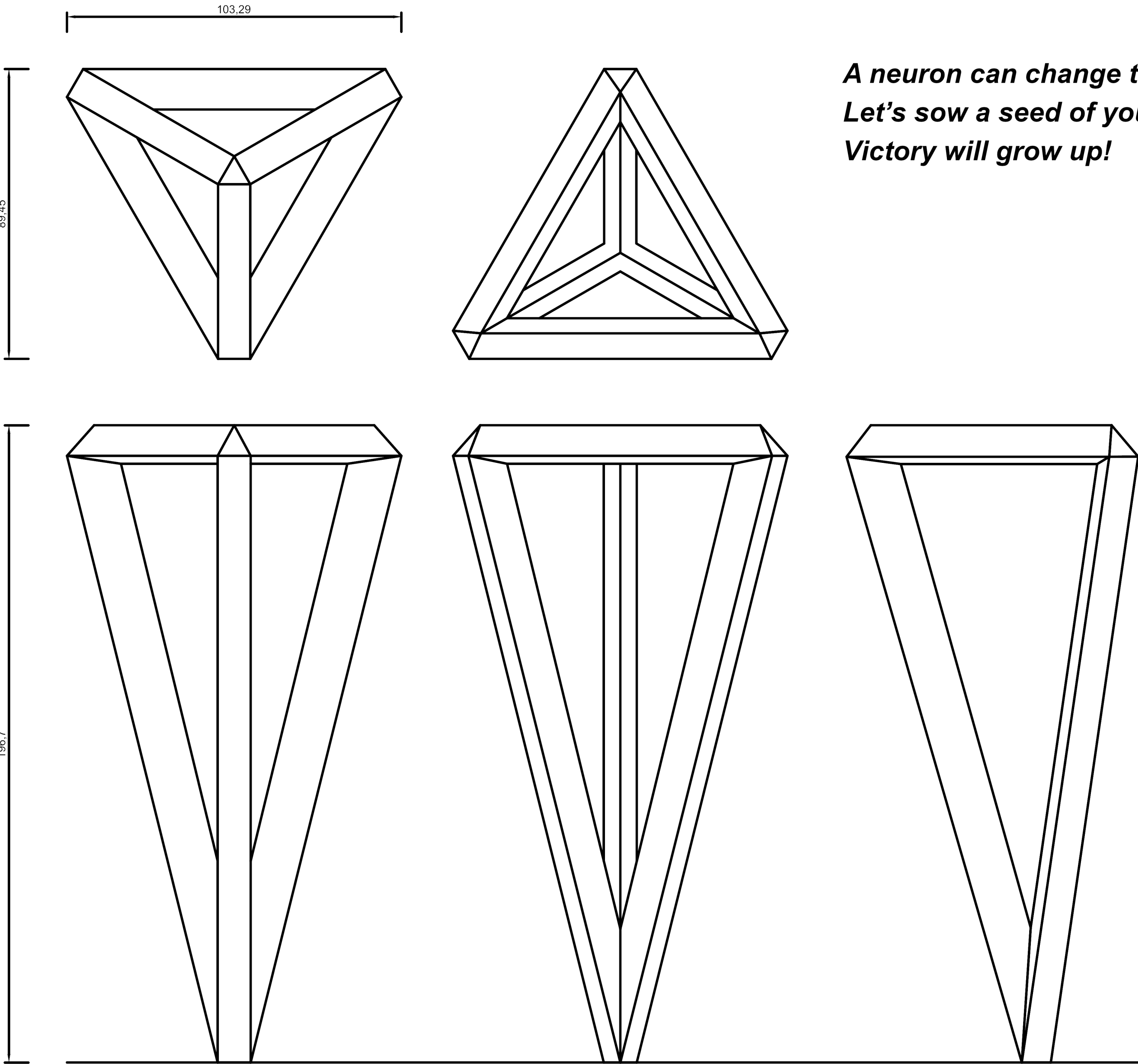


Can You Create 4 Triangles Using 6 Match Sticks?

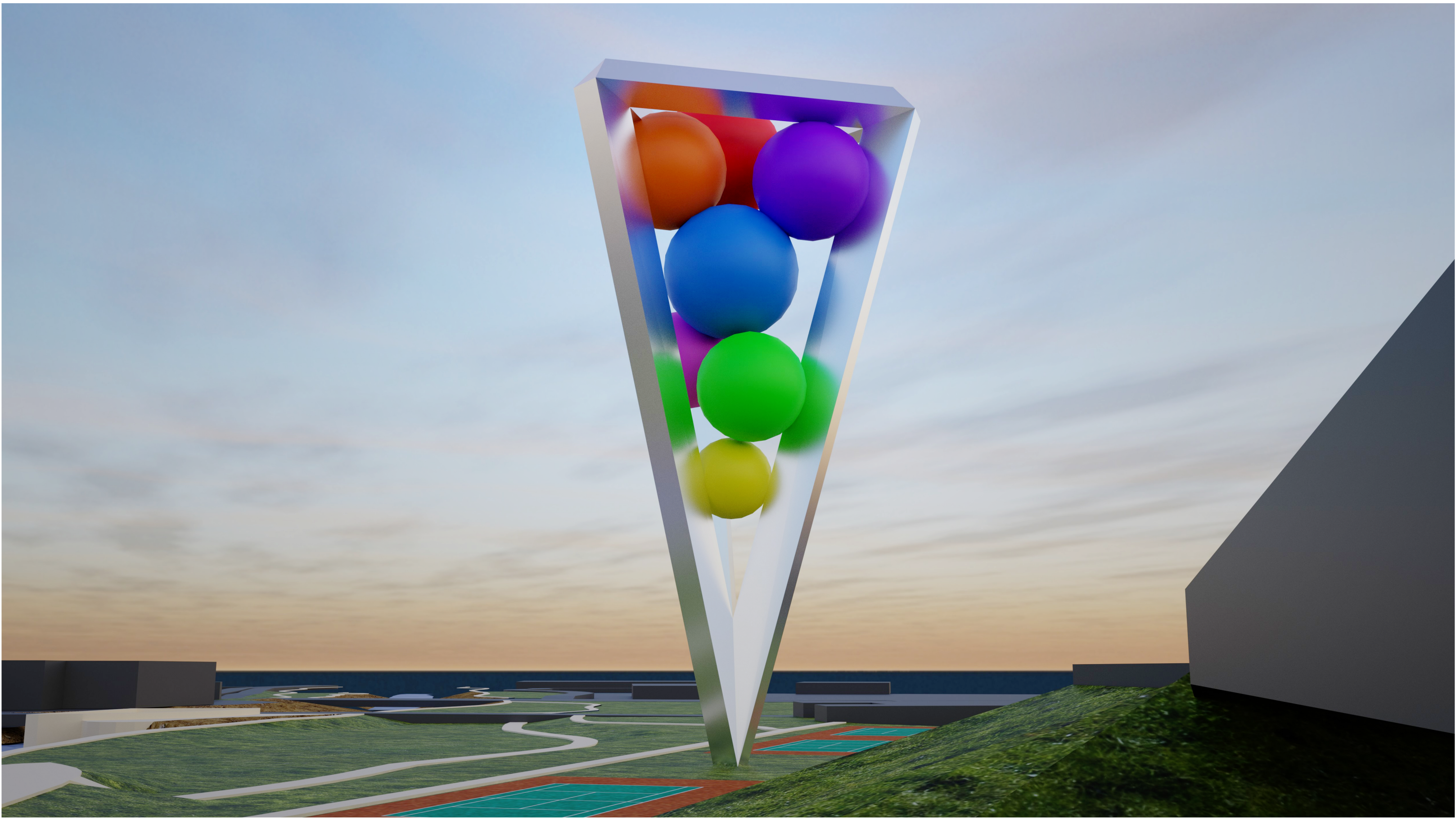
This famous puzzle is used to encourage creative problem solving, and symbolizes the thinking in different ways. If someone think in three-dimensional space instead of two-dimensional plane, can find out the answer: Pyramid

Quite the reserve of constructing a pyramid, why do not grow a tree with the same geometry.

- *Uses minimum area on the ground*
- *Like signs on digital maps*
- *Simple geometry*



*A neuron can change the world
Let's sow a seed of your idea
Victory will grow up!*



San Jose: “Simplicity Innovation”

The citizens do not need advices or guides about creative thinking: because it is a culture of daily life.

From this point of view reflecting the creative culture, that form of the structure, would make city's image stronger in minds of people living inner and outer. A simple geometry with huge impact.

The tower's foot placed on the second game court. This location is near the road and in front of the road sign. Passengers can see the tower clearly, also green area is not decreased.

Structure is steel frame lattice. Outer surface will be covered with solar panels, so its reflectiveness will decrease.

The pyramid frame make possible for hologram and balloons for festival or special days.