

The BASKET

An Icon for Silicon Valley

An Inspiration for a Changed World

At the epicenter of innovation, in a time of worldwide solidarity, **The Basket** is immediately recognizable as a collective symbol. It represents the best of artful ingenuity, detailed labor and humble usefulness.

The Basket is for everyone; Some create, some fill, others carry. The Basket embodies creativity, generosity and abundance.

The Basket

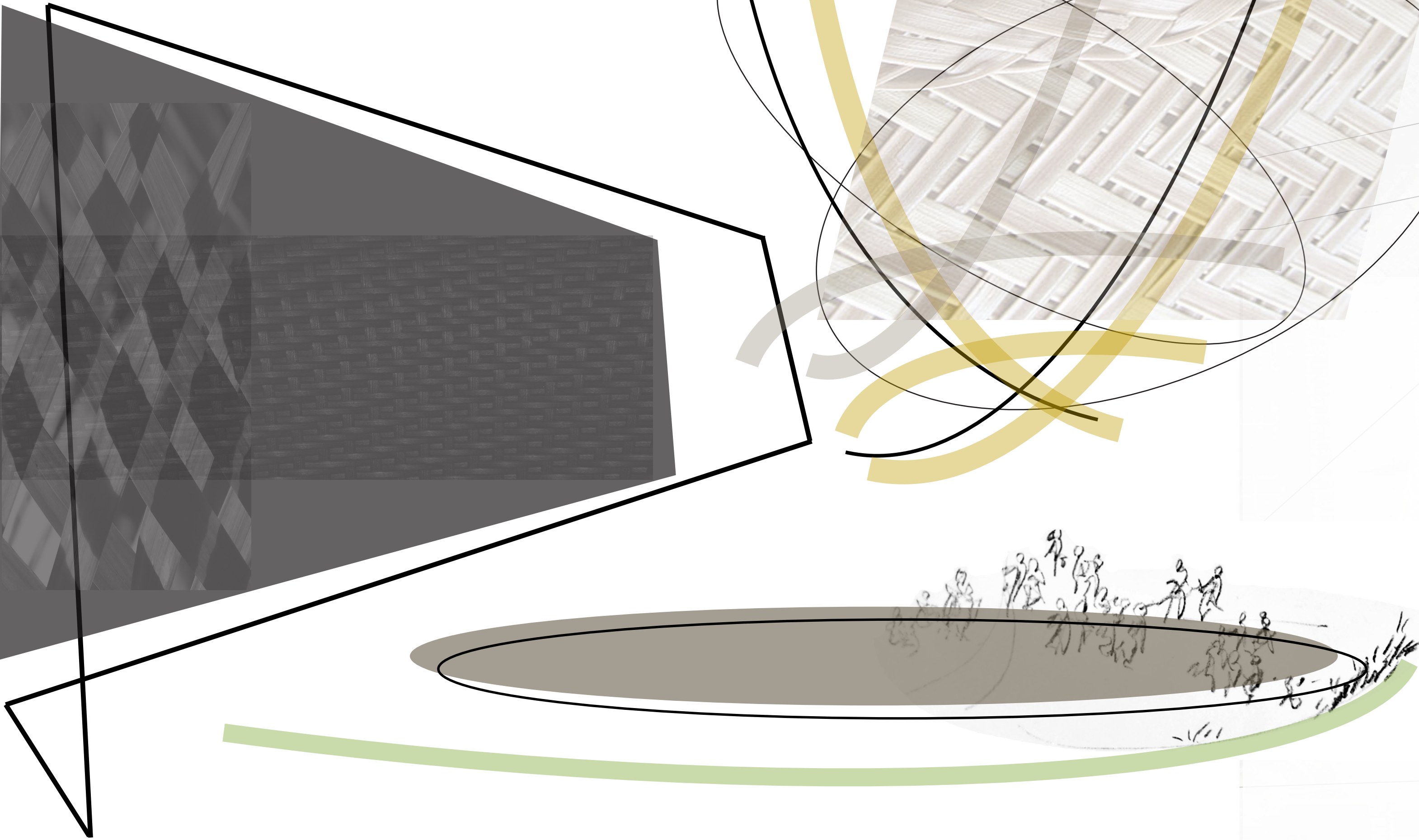
disrupts by replacing the paradigm of a cunningly crafted, entangling web with a co-created supportive vessel for gathering, transport and protection.

democratizes by bringing people of all cultures together and by highlighting technology engaging Silicon Valley remotely from around the globe.

decolonizes by honoring indigenous knowledges and the intimate connection of people with a sustainable ecology through design and programming that revives and celebrates both.

Building

100' high multi-use building
Up to 250,000 sf over 8-stories
Woven metal and wood facade
Serves as a backdrop for The Basket
Provides acoustic screening from Hwy 87
Regenerative Design (beyond NetZero)



Basket

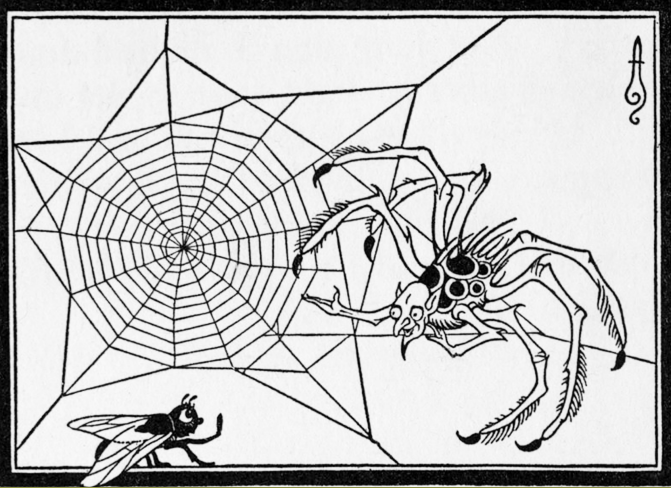
200' (or maximum height) open-air sculpture
80' diameter, supported by Building
Elevated 30' above Plaza (170' tall)
Lighted on vertical wood and metal 'reeds'
Visible from surrounding area
Weaves into and through building
Enter at higher levels from balconies

Plaza

Assembly space beneath The Basket
Enhances native ecology with plantings
Opens onto existing lawn
Extends via footbridges to Pavilions
Relates to The Weavers' Gifts
Entire site: Regenerative Design



mandjie shportë saski кошук korpa кошница cistella bukaq cesterà košara košík قاش kury mand korbo korv basket kor panier
temalpakh kete cazc kurv mtanga kosz cesta coş корзина ato basgaid kopna tswanda košík košara dambiil karanjang kikapu korg sabad كاس كاربون sepet se



- 1 Basket
- 2 Building
- 3 Plaza
- 4 New Footbridges
- 5 Weaving Pathways
- 6 Pavilions
- 7 New Plantings (throughout)

Image credit: B.Artzybasheff. All others 'Labeled for Reuse'.



Building

Achieving beyond NetZero, this structure embodies the ambitions of Regenerative Design and the spirit of the Basket concept - to contribute more than is taken and to enhance natural abundance through awareness, creativity and dedication. Mixed-uses are centered around creating and supporting the Star Program. These include spaces for exhibition, education, performances and play. Support spaces include technology incubators, recreation opportunities and cafes. A 20' high atrium interacts with the entry Plaza. The Basket is accessed from balconies and rooftop. North and east elevations protect from road noise while bringing highway visibility to the project. Existing neighbors are respected.

Pavilions

A set of small buildings is distributed along new pathways on the west portion of the site. Their placement holds street edges and facilitates active uses. In keeping with programming, uses highlight diversity and innovation in artisanry, science and culinary arts. Space is provided for food vendors, workshops, and hands-on activities. A staffed information kiosk greets visitors at the southwest corner.

Footbridges

Informed by biomimicry, two lightweight footbridges further weave together the site. Inspired by branching structures of native plants the bridges enhance river conditions.

Plantings

Regenerative Design extends across the entire site. Guided by the principles of restoration and natural abundance the Riparian Corridor is robustly enhanced through native plantings.

'Star Program' - Rewarding and supporting innovation and generosity toward meeting the United Nations Sustainable Development Goals



(While working in isolation might result in survival, working together can take people beyond survival and onto prosperity.)

There is Enough.

- a Five Skaters (refreshed)
- b Existing Bridge
- c Weavers' Gift
- d Confluence Point
- e Assembly Lawn
- * Star Plaques (off-site)

EXPERIENCE
new technology

MEET
people from around the world

INSPIRE
yourself and others

SHARE
in the abundance



Nā tō raurou, nā taku rourouka ora ai te iwi.
With your basket and my basket the people will thrive.



Global Stars

Recognizing innovators across the planet, Global Stars are identified and supported. Infomation about their achievements are promoted throughout the Building.

In this ficticious example, an innovator in the Antipodes is testing silent airplane travel which eliminates excessive noise near airports.



Local Stars

Plaques are placed throughout the Basket, Plaza and Building acknowledging Local Stars.

Corresponding plaques are placed throughout Silicon Valley encouraging visitors to explore the area, learn about the achievements and potentially meet those involved.

