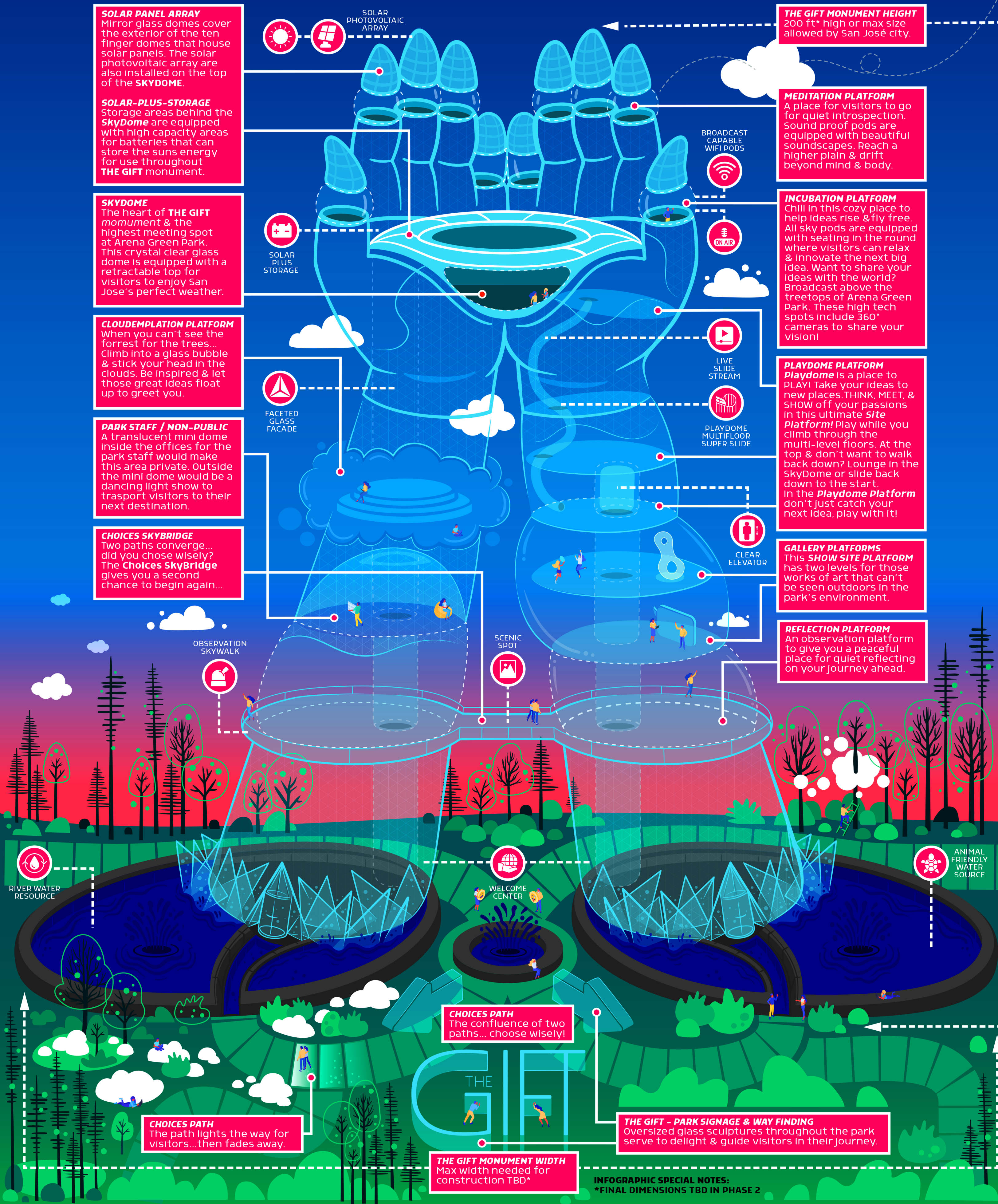


THE GIFT : MONUMENT & PARK OVERVIEW

The illustration below is a glimpse into Arena Green Park for San José.
THE GIFT is a place that **CONNECTS** us, **BUILDS** ideas, & **SHARES** dreams. A place for us all, that will endure to fuel our imaginations & inspire future generations.



EVERGREEN WOODLAND & SITE PLATFORMS

SITE PLATFORMS: SUMMARY OF PLAN

Social leisure in the digital age compels smart cities to create interconnected spaces where visitors can be socially connected in real-time, share leisure experiences, or connect with their extended online community. These fun and connecting experiences also lead to new experiences, project partnerships, & making great things.

The addition of **Site Platforms** will add value to the public park experience for visitors by inspiring mindful conversations and connections about the community and themselves. It will generate inspirational sites to nourish imaginations, showing a commitment to wildlife conservation, historic preservation, and interactive rejuvenation.

These **Site Platforms** throughout the **Arena Green Park** will be designated in the areas called **The Evergreen Woodland**. Visitors to this area will discover specific **Site Platforms** carved out of spaces within the trees. These pocket spaces throughout the park will give the visitors a place to **THINK, MEET, & SHOW** their passions.

Although, Site Platforms are typically located in The Evergreen Woodland of Arena Green Park, visitors can travel to areas in THE GIFT monument to experience places to THINK, MEET, & SHOW!

ALL WE NEED IS YOU!

Site Platforms serve three distinctive purposes & can be used to activate the park spaces & bring them to life!

The Evergreen Woodland Inside **Arena Green Park** is filled with magical, intimate, & inspiring spots to experience community like never before.

SITE PLATFORMS
Reserve & activate the park's **THINK, MEET, & SHOW** areas by using a site's kiosk. Visitors will be invited to interact with site portals by scanning a dedicated QR code. Once reserved, the interactive portal will open & give you creative ways to have fun!

RESERVE SITE
ON-SITE MUSIC
WIFI ENABLED
THINK
MEET
SHOW

HELPING HAND SOLAR ARRAY
Smaller hand sculptures will telescope above the tree canopy. These artfully sculpted hands will be equipped with an internal solar panel system to serve the energy needs of the park's **SITE PLATFORMS**. Any surplus energy would also be relayed back to **THE GIFT** monument.

CLOUD CANOPIES
Floating cloud sculptures that enhance the natural tree canopy, provide soft glowing light, & adding magic to the park space.

CLEAN ENERGY TOWER
SOLAR CHARGING STATION

THINK
THINK Site Platforms are small solo pockets within the park.
THINK spots are used for some quiet contemplation. Incubate an idea, meditate, or just hang out with a new friend for a meeting of the minds.

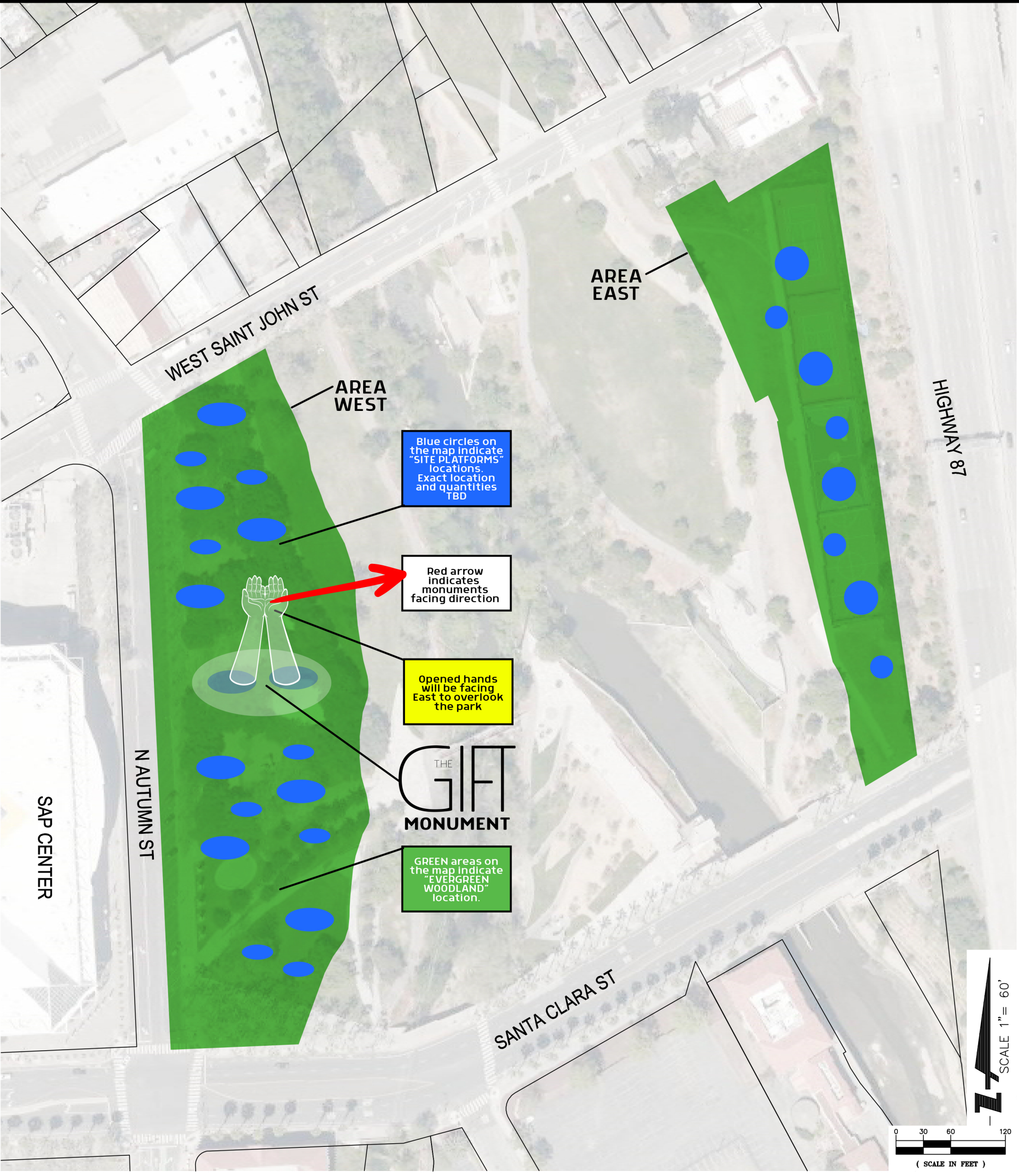
MEET
MEET Site Platforms can be mid-sized for group meet-ups.
MEET spots are in more spacious clearings, to engage groups of visitors for events, classes, lectures, or performances requiring extra space.

SHOW
SHOW Site Platforms are large & small cul de sacs for visitors.
SHOW spots celebrate, perform & exhibit work to the community. An IRL experience for viewing sculptures, performances, artwork, & more.



THE GIFT : MONUMENT & PARK – SITE PLAN / DETAILS / MOOD BOARD

ARENA GREEN PARK SITE MAP



PROJECT DETAILS

THE NET-ZERO SOLUTION

A city that protects vital resources preserves a legacy for future generations.

One of the ways the park would reach net-zero emissions faster is by applying both conventional carbons removal and mitigation techniques for energy creation.

THE GIFT monument will be celebrated for its majesty, but great design must go hand-in-hand in a world where sustainability and energy efficiency are paramount for creating an **NZEB** [Net Zero Energy Building] of the future.

Thanks in part to California's \$3.2 billion in subsidies and incentives which have been earmarked to help achieve these goals, an **NZEB** could be achieved and usher in this San José monument as the benchmark from which all other **NZEB**'s are measured.

THE MONUMENT STRUCTURE

At the summit of **THE GIFT**, a network of solar photovoltaic arrays would be built within the monument's fingers and atop the **SkyDome** to house solar panels for harvesting the sun's energy. On the monument's lower levels, banks of solar-plus-storage would capture excess energy in onsite batteries to power sections of the monument and park. The monument's solar array would also intergrade throughout the park. Smaller hand sculptures will telescope above the canopy of **The Evergreen Woodland** trees to harness the sun's rays. These artfully sculpted hands would be equipped with an internal solar panel system to serve the energy needs of the park's **Site Platforms** where visitors go to **THINK, MEET & SHOW**. Any surplus energy would also be relayed back to **THE GIFT** monument and stored for later use or recycled back into the park.

THE PARK ENVIRONMENT

In addition to an NZEB for sustainability, the park can go above and beyond carbon removal emissions to surround the monument and throughout the park. The erection of a robust woodland experience would transform the park beyond the traditional manicured public park and serve as a green oasis within the city's expanding infrastructure. The recommendation is a deep concentration of local flora to cover 40-60% of the park to create a forest experience within the urban jungle. Known as **The Evergreen Woodland**, this botanical garden would reduce emissions and create a natural canopy and designation spot for **Site Platforms** visitors to activate their projects.

The addition of denser foliage creates a more immersive experience, reducing noise and light pollution. A larger sanctuary will also create a beautiful preserve for area wildlife and help offset the expanding city's footprint in this popular tech destination. .

PROJECT DETAILS

PARK AMENITIES

A few simple Ideas have been suggested for amenities throughout this presentation for **THE GIFT** monument and within **The Evergreen Woodland**, however at its core, the philosophy of the park is to create a universally iconic monument [**THE GIFT**] and develop an inspiring environment [**The Evergreen Woodland**].

The concept is for the visitor to use the park's spaces as a vessel, filling it with their dreams and Ideas to make it something they can call their own.

The park serves as a cornerstone of the community that is always open to the citizens of San José & the world.

LIGHTING FEATURES

THE GIFT will be built with the spirit of light at its heart. Two glass towers will rise from the treetops to harness the sun's light, provide shelter, and require limited power. A network of lighting will extend between the giant triangular faceted glass pieces with programable color kinetic lighting.

THE GIFT will accentuate the beauty of nature's warm light and showcase the technological wonders of the city.

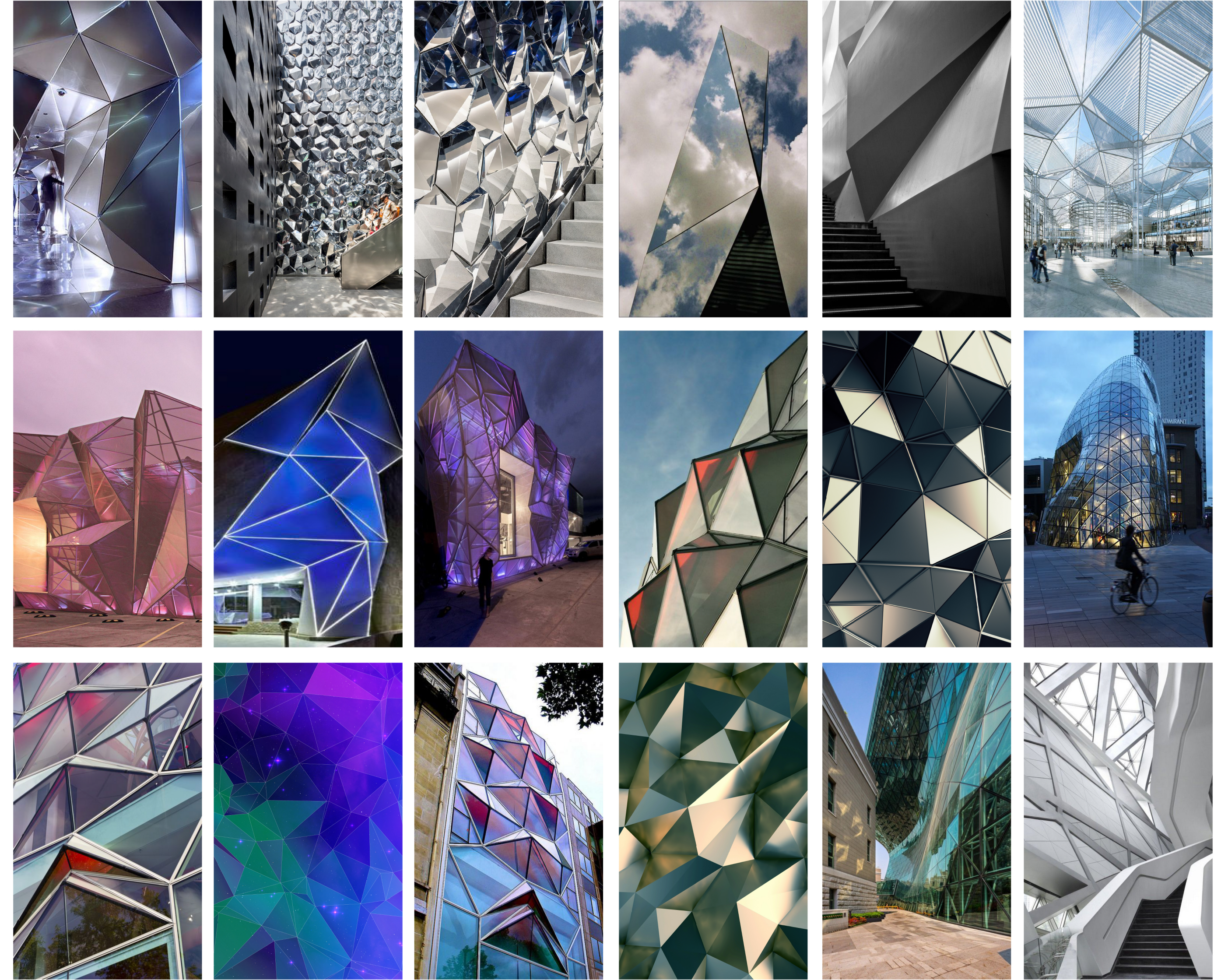
When visitors tour **The Evergreen Woodland** in Arena Green Park, the paths under their feet will light the way in dancing patterns of soft white lights. Lights will ebb on + flow off as visitors walk. All the while the light paths will be obscured by the winding paths and **The Evergreen Woodland** canopy to prevent any unwanted aerial distractions.

Visitors who stray close to the paths that travel into a **Site Platform** will trigger color kinetics motion-activated lights. These lights will transform the path by rolling out like an ocean wave on the beach. Undulating in the colors that distinguish a **Site Platform**, these umbra waves of color can identify an area with flashes of reds / purples for THINK, oranges / yellows for MEET or green / blues for SHARE.

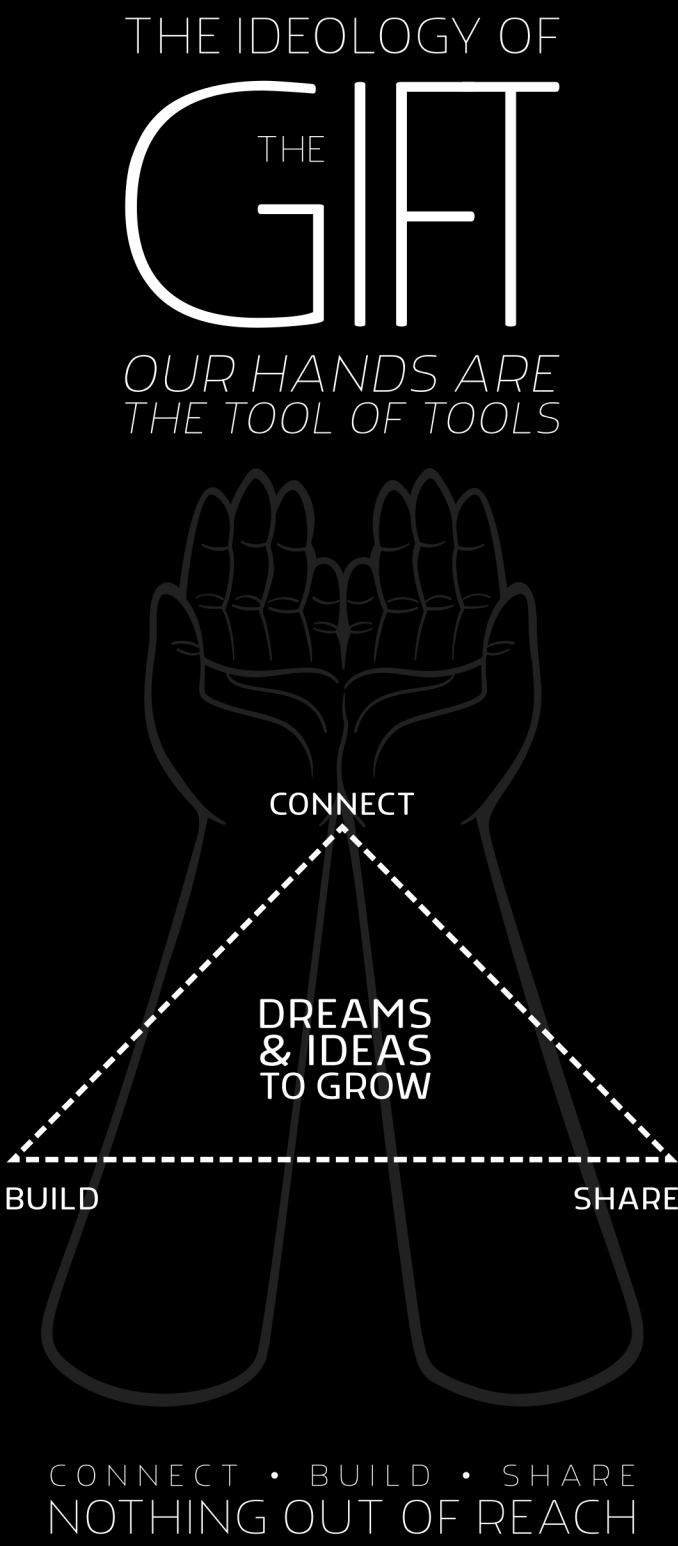
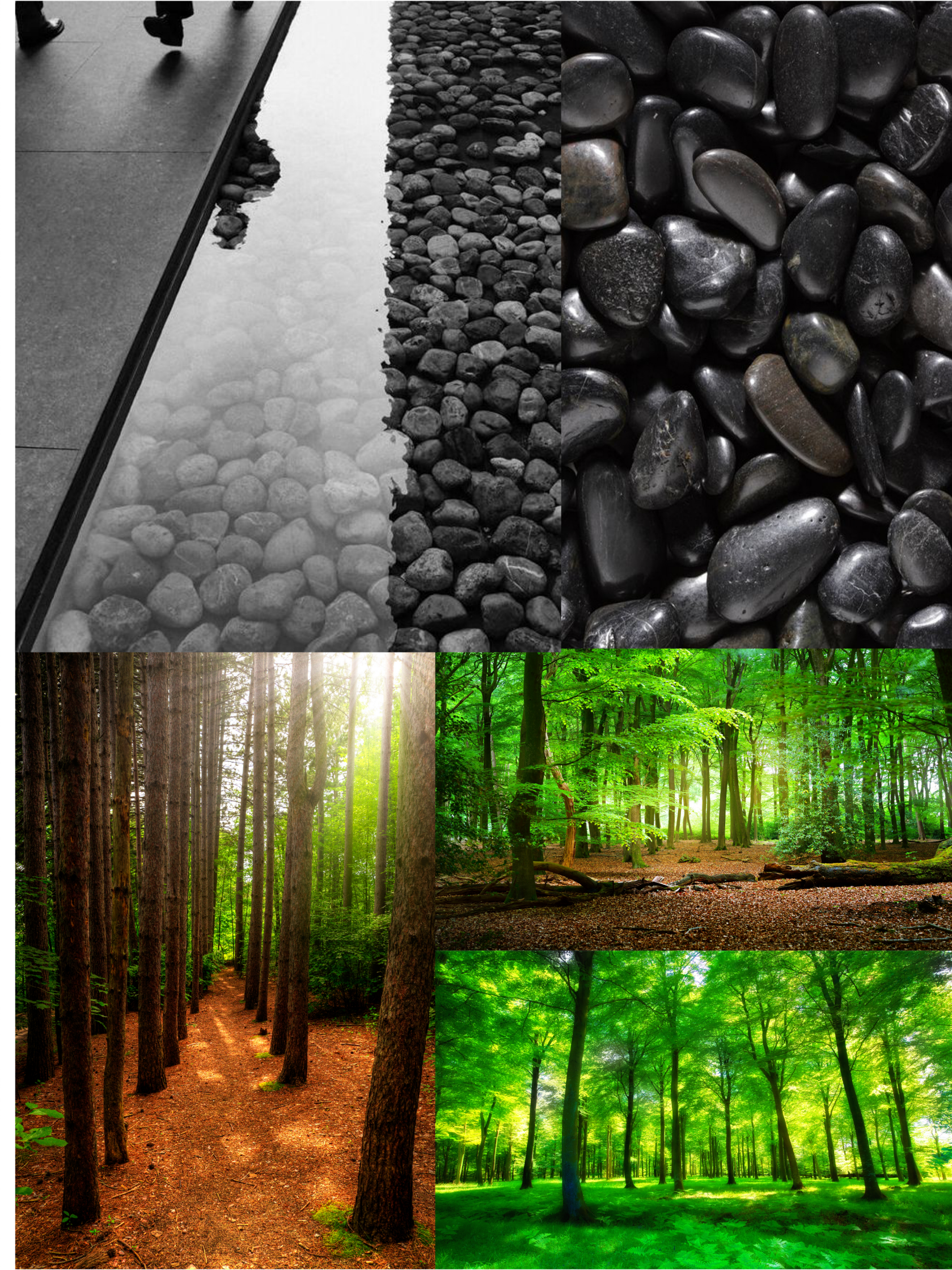
MOOD BOARD OF MATERIALS

The Ideology of **THE GIFT** informs the architectural materials, & the shapes found within the monument's structure. The Images below are a mood board for some of those materials I'd like to use.

GLASS / METAL / LIGHTING / FORM



NATURE



THANK YOU

