

# INSTITUTE FOR SOCIETAL AND TECHNOLOGICAL PROGRESS

THE PROPOSED BUILDING IS DESIGNED TO SUPPORT AN INTERDISCIPLINARY, GRADUATE-LEVEL, RESEARCH INSTITUTE FOCUSED ON CREATING A BRIDGE BETWEEN ACADEMIA AND THE TECH INDUSTRY. THIS BRIDGING INSTITUTE SHOULD STRIVE TO CREATE A NEXUS FOR FREE FLOWING DEBATE AND ANALYSIS BETWEEN ACADEMICS AND TECH COMPANIES IN REGARDS TO THE QUALITATIVE IMPROVEMENTS THAT TECHNOLOGICAL INNOVATION CAN BRING TO COMMUNITIES LOCAL AND FAR.

THE INSTITUTE MUST REMAIN A TRANSPARENT, IMPARTIAL RESOURCE FOR UNDERSTANDING THE FULL RANGE OF EFFECTS, BOTH POSITIVE AND NEGATIVE, THAT ARE PROMOTED BY VARIOUS TRENDS AND CORPORATIONS WITHIN THE TECH INDUSTRY. IT MUST NOT LIMIT ITSELF SOLELY TO THE QUICK ECONOMIC BENEFITS OF DISRUPTIVE SCHEMES. IT MUST DELVE DEEPER INTO A THOROUGH, MULTI-DISCIPLINARY, AND MULTI-PERSPECTIVE EVALUATION OF HOW INNOVATION AND THE TECH INDUSTRY DO OR DO NOT BRING EQUITABLE ADVANCEMENT OF COMMUNITIES AND HUMANITY.

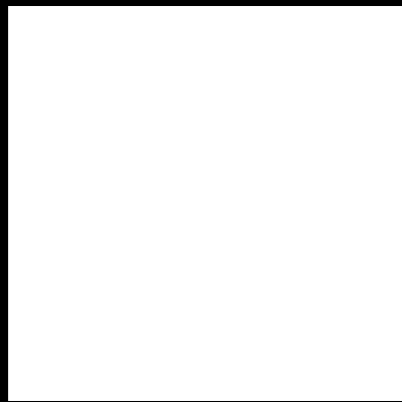
THE INNOVATIVE CULTURE OF THE TECH INDUSTRY SERVES TO DISRUPT TRADITION AND CREATE NEW GROWTH; HOWEVER, IT CREATES NEW DILEMMAS AND UNFORESEEN CONSEQUENCES. THEREFORE IT MUST BE THE DUTY OF THE INSTITUTE TO SERVE AS A CENTER FOR UNDERSTANDING THE EFFECT OF THE TECH INDUSTRY BOTH IN THE SERVICES IT PROVIDES AND THE WAY IN WHICH IT OPERATES. THE INSTITUTE IS, HOWEVER, NOT A WATCHDOG. THE GOAL OF THE INSTITUTE MUST REMAIN TO PROVIDE AN EXTENSIVE AND PROMISING BODY OF RESEARCH THAT EXAMINES SOLUTIONS THROUGH WHICH THE FINANCIAL SUCCESS OF THE TECH INDUSTRY CAN ACHIEVE HARMONY WITH A QUALITATIVE PROGRESS OF SOCIETY.

THE LOCATION OF THE INSTITUTE AT THE ARENA GREEN WEST SITE, IN CLOSE PROXIMITY TO SAN JOSE'S DIRIDON STATION AND EASILY ACCESSIBLE TO THE LARGER SILICON VALLEY AREA, IS CRUCIAL FOR THE INSTITUTE TO CREATE A VIBRANT AND DYNAMIC SENSE OF PLACE WHERE INDUSTRY, ACADEMIA, AND COMMUNITY WILL INTERACT WITH THE PROGRAMING OF THE INSTITUTE. THE INSTITUTE, AND THE BUILDING PROPOSED TO HOUSE IT ARE INTENDED NOT ONLY TO CREATE AN INSPIRING AND UNIQUE ICON, BUT TO MORE IMPORTANTLY, CREATE A SPACE OF INTRIGUING AND ESSENTIAL DISCUSSIONS.

THE INSTITUTE IS DESIGNED TO BE OPEN AND WELCOMING, ENVIRONMENTAL AND CUTTING-EDGE, PROGRESSIVE AND RETROSPECTIVE. ITS DESIGN SUPPORTS INTERDISCIPLINARY COLLABORATION BEYOND TRADITIONAL ACADEMIC CURRICULAR ALLIANCES. IT IS DESIGNED TO WELCOME IN REVIEW FROM THE PUBLIC AS A GUARANTOR OF ACCOUNTABILITY. RESEARCHERS WILL BE REQUIRED TO PRESENT THEIR WORK IN EXHIBIT SPACES AND CINEMA SCREENINGS TO FURTHER WELCOME THE PUBLIC FOR REVIEW.



# THE INSTITUTE'S CAMPUS

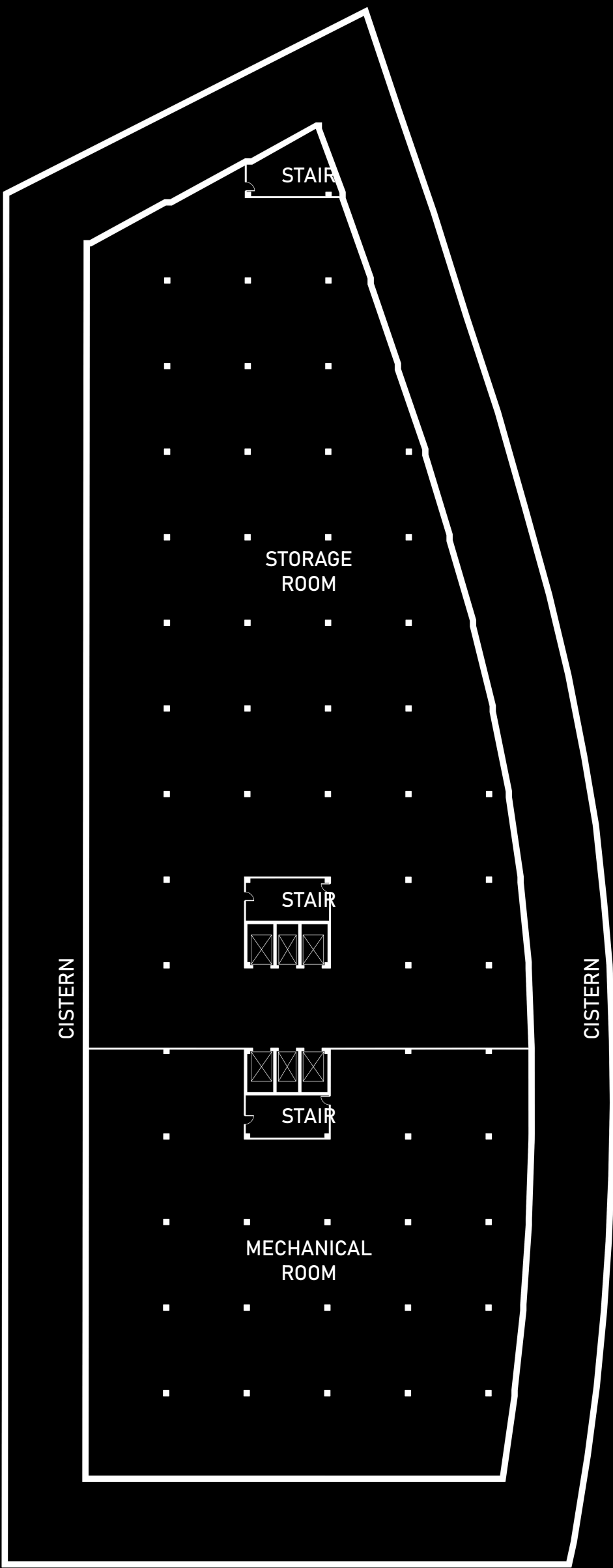


THE HOUSING OF THE INSTITUTE PROPOSES A BIOPHILIC, UNIQUE, AND INSPIRING, YET WELCOMING CAMPUS FOR THE RESEARCH INSTITUTE TO GROW.

FOUR ENTRANCES BRING VISITORS AND RESEARCHERS TO THE INSTITUTE AS THEY CROSS ACROSS BRIDGES ABOVE A GARDEN TO THIS MASS TIMBER BUILDING THAT DIVES BELOW-GRADE. THE MAJORITY OF PUBLIC SPACE IS ABOVE-GRADE AND LOOKS OUT AT THE SURROUNDING CITY. THE RESEARCH AND CENTER OF THE INSTITUTE, HOWEVER, IS BELOW-GRADE, OFFSET FROM ITS FOUNDATION WALL TURNED RETAINING GREEN WALL. IN THESE BELOW-GRADE SPACES, RESEARCHERS ARE PRESENTED WITH A RANGE OF INDIRECT LIGHT AND AN EXPANSIVE PANORAMA OF PLANT-LIFE.

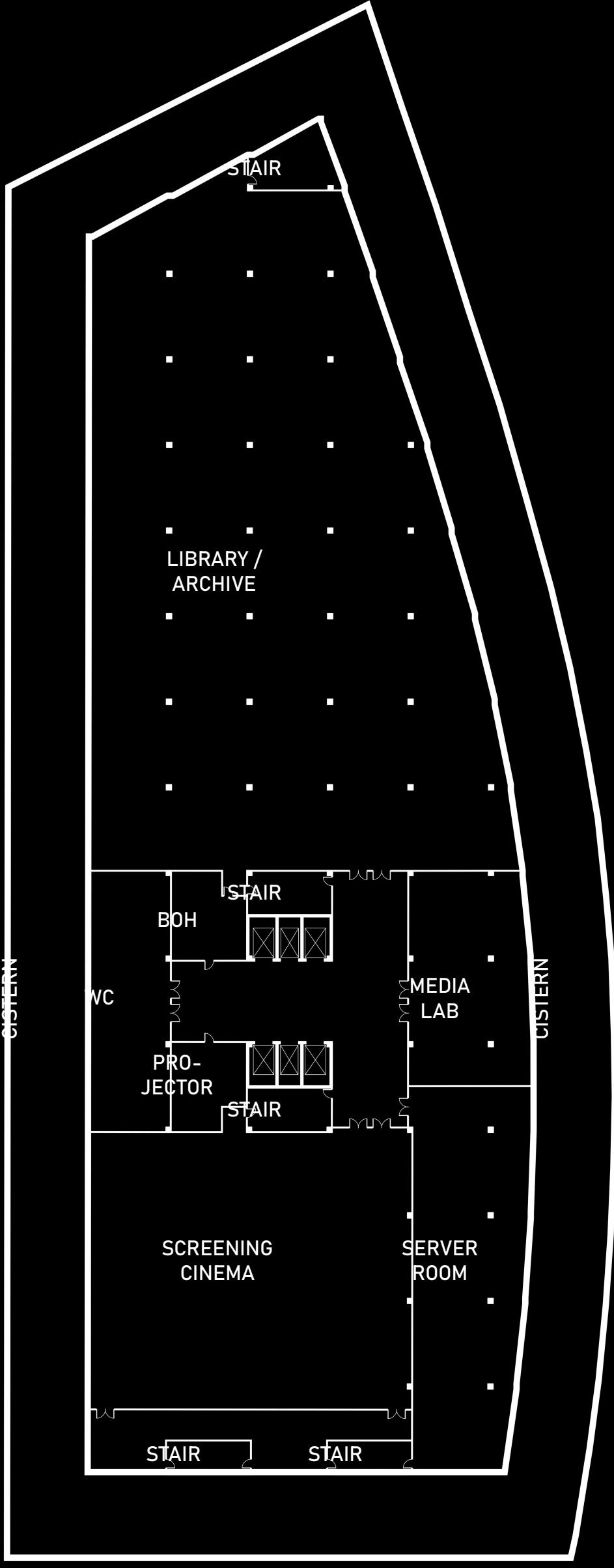
BELOW THE GARDEN, RAINWATER FALLS INTO LARGE SISTERNS THAT CIRCLE THE LOWEST TWO CELLARS OF THE INSTITUTE. THESE LEVELS HOUSE THE INSTITUTE'S RESOURCES OF WATER, LITERATURE, ARCHIVES, AND FILM. THIS ALLOWS FOR THE INSTITUTE TO EFFECTIVELY COLLECT AND REUSE RAINWATER COLLECTED ON THE BUILDING'S SURFACES.

THE BUILDING'S MASS TIMBER CONSTRUCTION ALLOWS IT TO HAVE A STRONG, INSTITUTIONAL FEELING WHILE ALSO BEING WELCOMING OF THOSE WHO ENTER. AS A RISING TREND IN CONSTRUCTION AND WITH MANY CONTEMPORARY ADVANCEMENTS IN THE CONSTRUCTION SCIENCES AROUND IT, MASS TIMBER PROVIDES AN IMPRESSIVELY STRONG, RELIABLE, AND RENEWABLE RESOURCE FOR ENVIRONMENTALLY FOCUSED CONSTRUCTION. MASS TIMBER IS THE CONTRAST TO THE BUILDING'S EXPANSIVE, OPEN GLASS FACADE THAT IS NEEDED TO BALANCE ITS AESTHETIC.



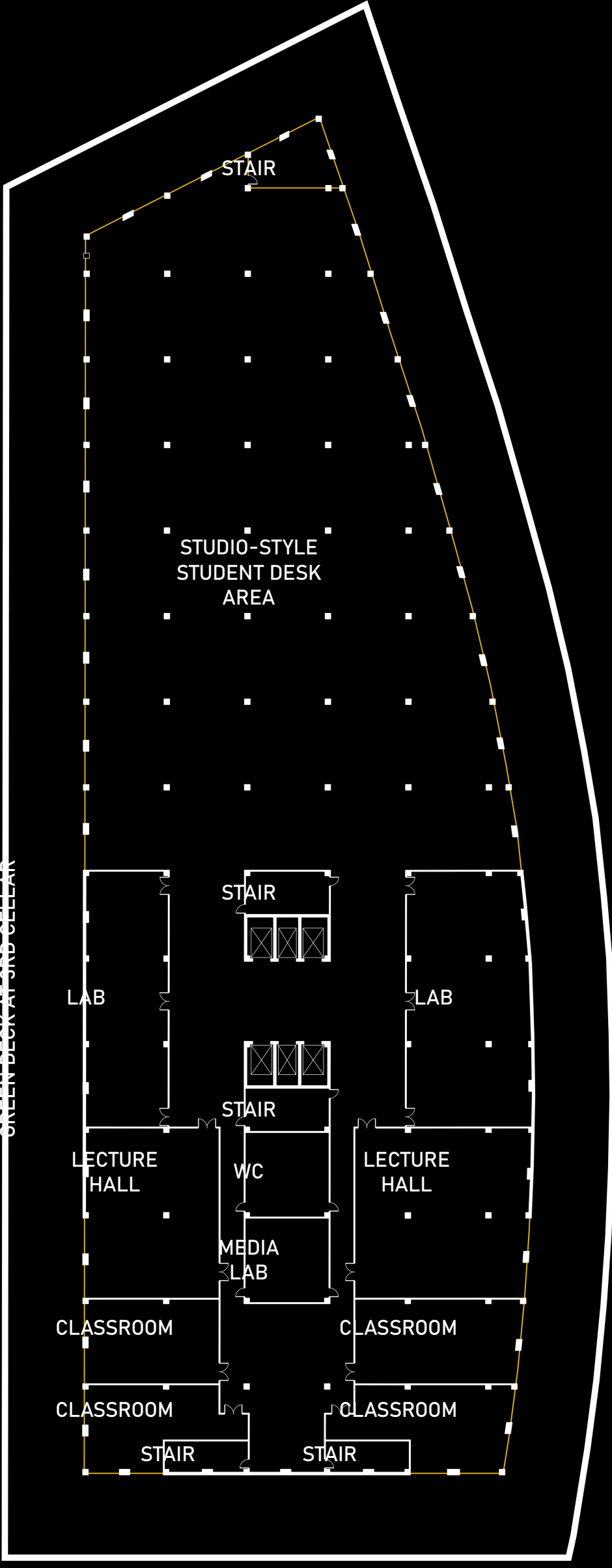
5TH CELLAR

THE 5TH CELLAR HOUSES THE MECHANICAL ROOM LARGE ENOUGH TO SUPPORT THIS BUILDING AS A ENERGY ZERO, SUSTAINABLE FACILITY, INCLUDING BUT NOT LIMITED TO THE WATER FILTRATION SYSTEM NEEDED TO UTILIZE WATER COLLECTED FROM THE ROOF AND GARDENS INTO THE CISTERN.



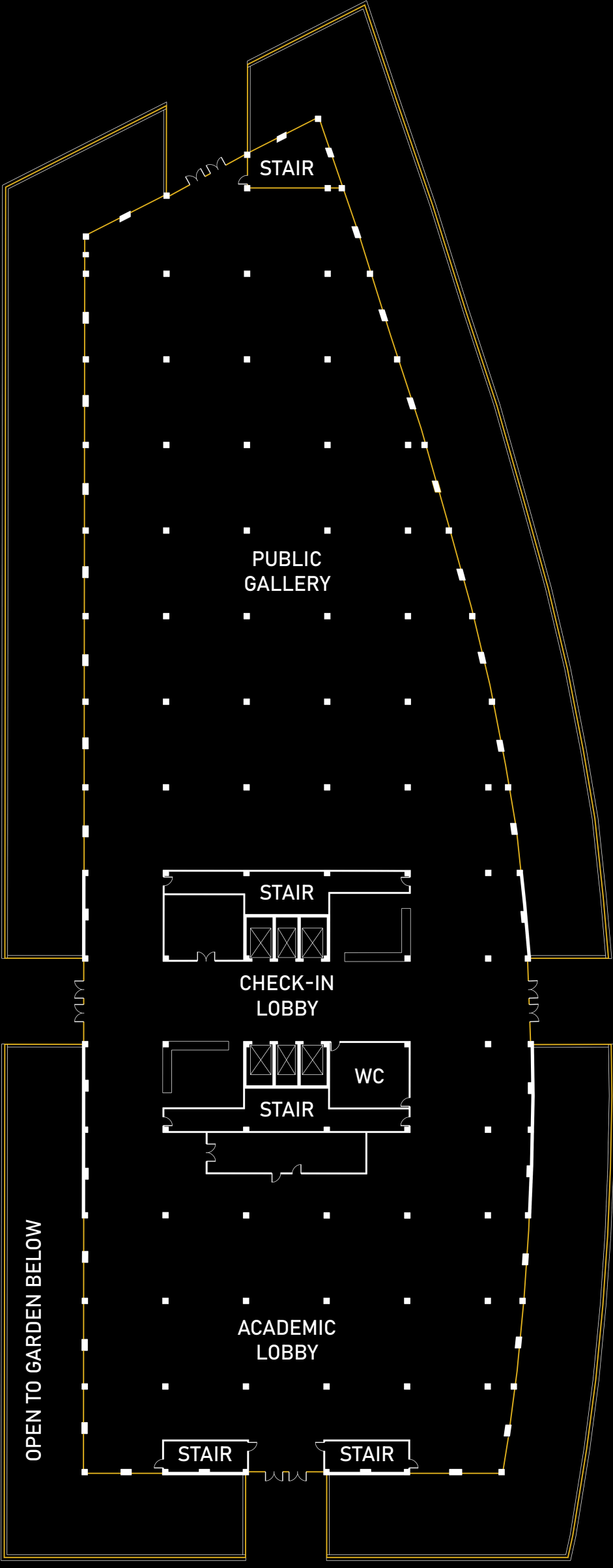
4TH CELLAR

THE 4TH CELLAR BRINGS RESEARCHERS AND THE PUBLIC ALIKE IN TO THE DEPTHS OF THE INSTITUTE WHERE A CINEMA FOR SCREENING FILMS AND A LIBRARY/ARCHIVE ARE HOUSED. THIS LEVEL ALSO HOUSES THE INSTITUTE'S SERVER ROOM AND AN ADDITIONAL LAB.



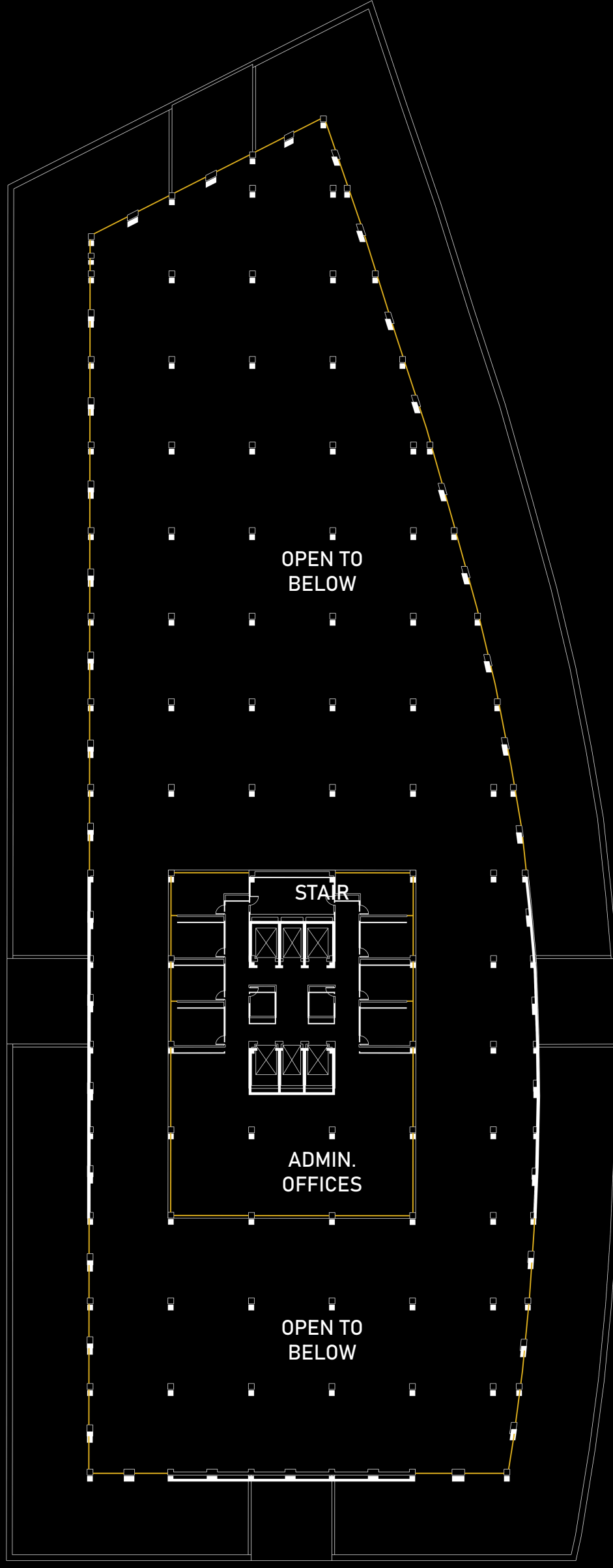
1ST-4TH CELLAR

THE TYPICAL CELLAR FLOOR PLAN, WITH ITS GRAND VIEWS OF THE GREEN WALL BEYOND ITS GLASS FACADE, HOUSES THE MOST ACTIVE PORTION OF THE INSTITUTE—ITS GRADUATE-LEVEL RESEARCHERS WITH AN OPEN, STUDIO SEATING CONFIGURATION AND ADJACENT LECTURE HALLS AND LAB SPACES.



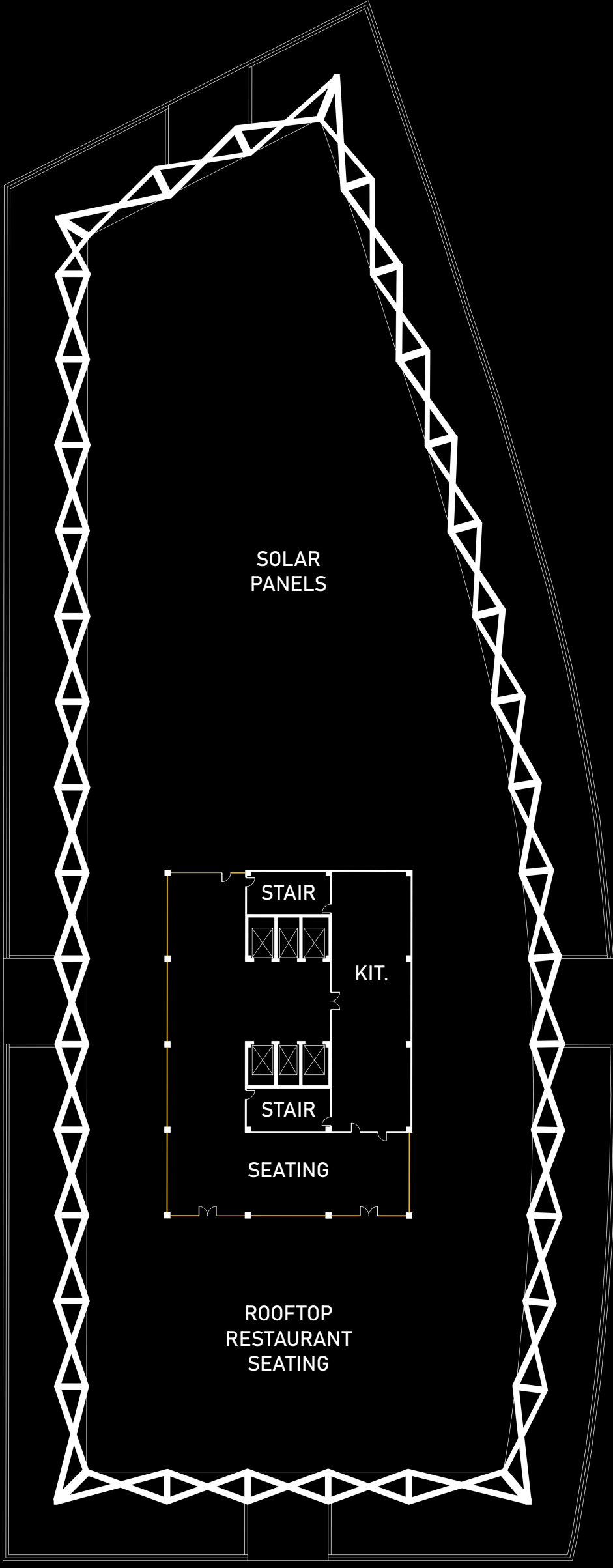
GROUND FLOOR

AFTER CROSSING VIA BRIDGE ABOVE THE GARDENS BELOW, RESEARCHERS AND PUBLIC GUESTS ALIKE ARE WELCOMED INTO THE INSTITUTE. CAFE SEATING IN THE ACADEMIC LOBBY ALLOWS FOR CASUAL GATHERINGS AND THE GALLERY SPACES ALLOW FOR PUBLIC REVIEW OF THE INSTITUTE'S WORK.



MEZZANINE

ADMIN OFFICES ON THE MEZZANINE LEVEL ARE CONCISE AND CENTRALIZED FOR AN EFFECTIVE ORGANIZATION AND ARE ORGANIZED TO EFFECTIVELY RUN BOTH ADMINISTRATE BOTH THE INSTITUTE'S RESEARCH, BUT ALSO ITS CONTINUED PRESENTATION TO THE PUBLIC.



ROOF

THE ROOF OF THE INSTITUTE HOUSES A CAFE/RESTAURANT WITH INDOOR AND OUTDOOR SEATING FOR THE PUBLIC TO ENJOY WHILE VISITING EXHIBITS. FOR RESEARCHERS TO REFUEL, OR FOR EVENTS TO BE HOSTED. THE MAJORITY OF THE ROOFTOP, HOWEVER, HOUSES THE BUILDINGS ARRAY OF SOLAR PANELS.