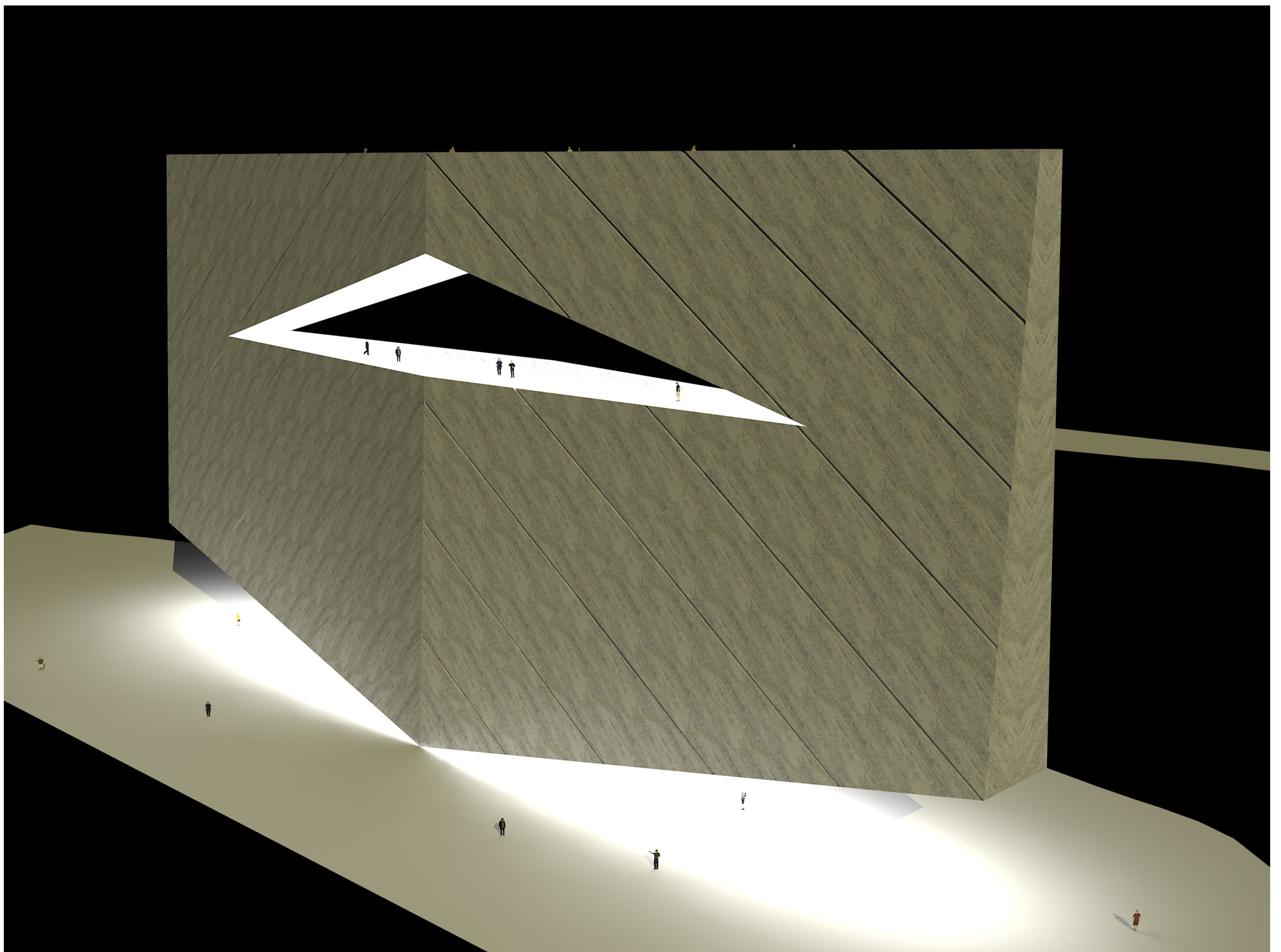
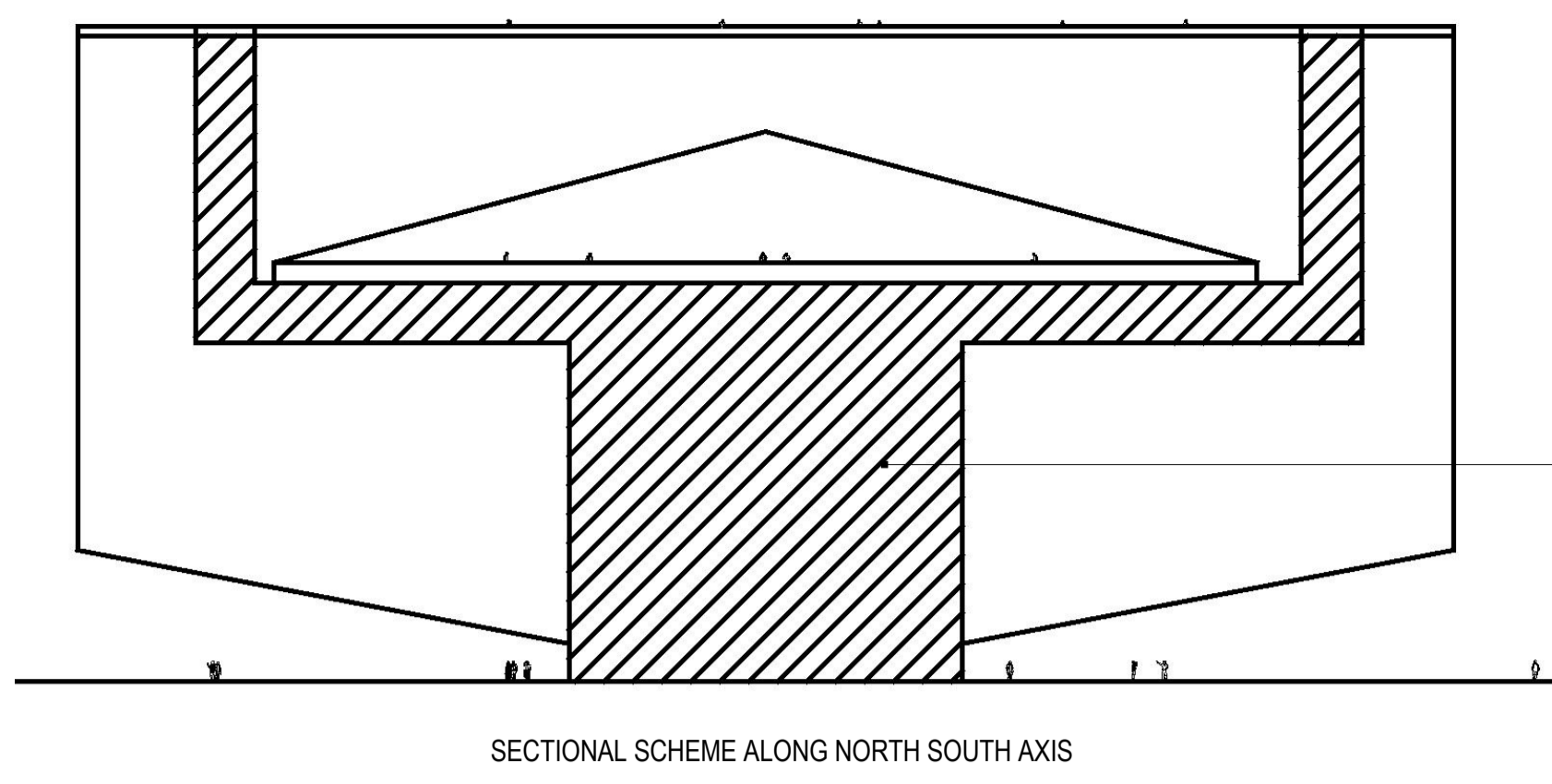


EQUANIMITY



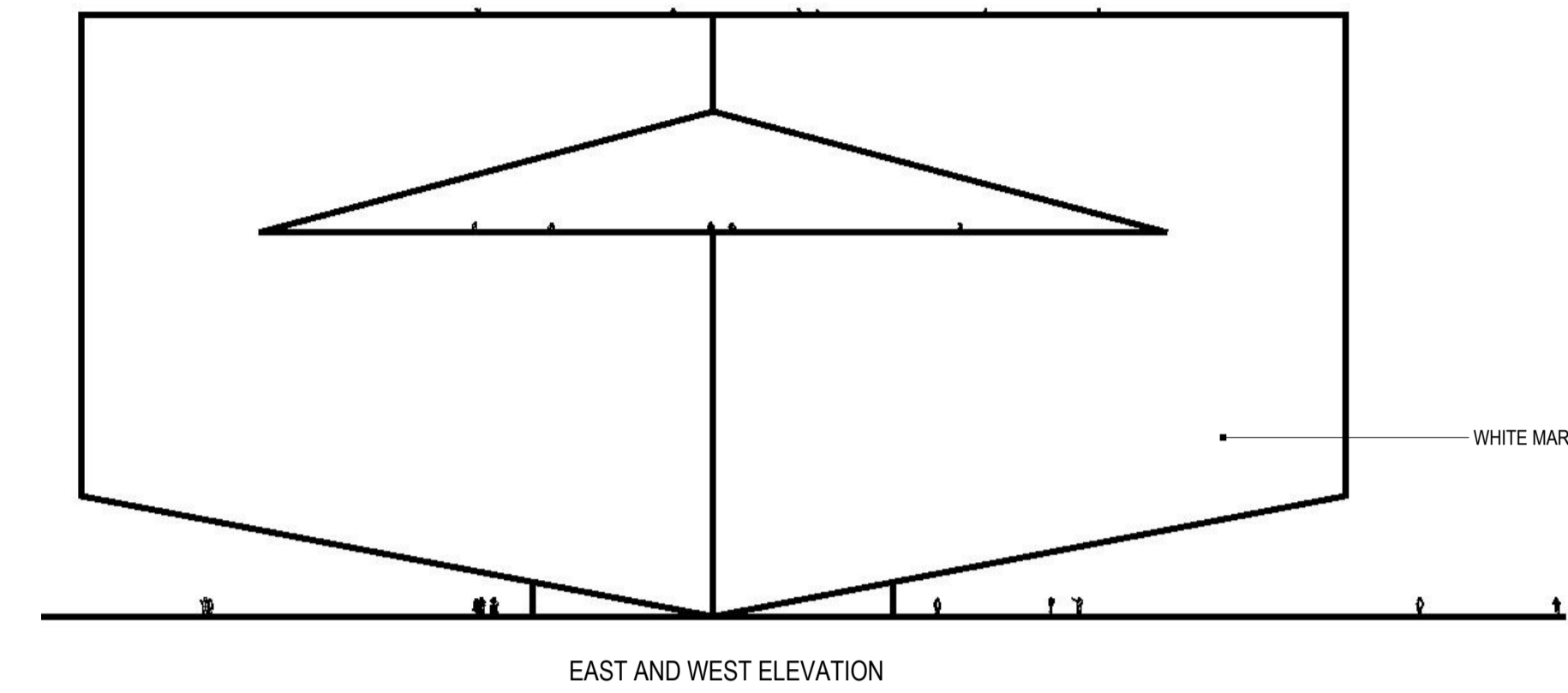


+200'
TOP DECK LEVEL

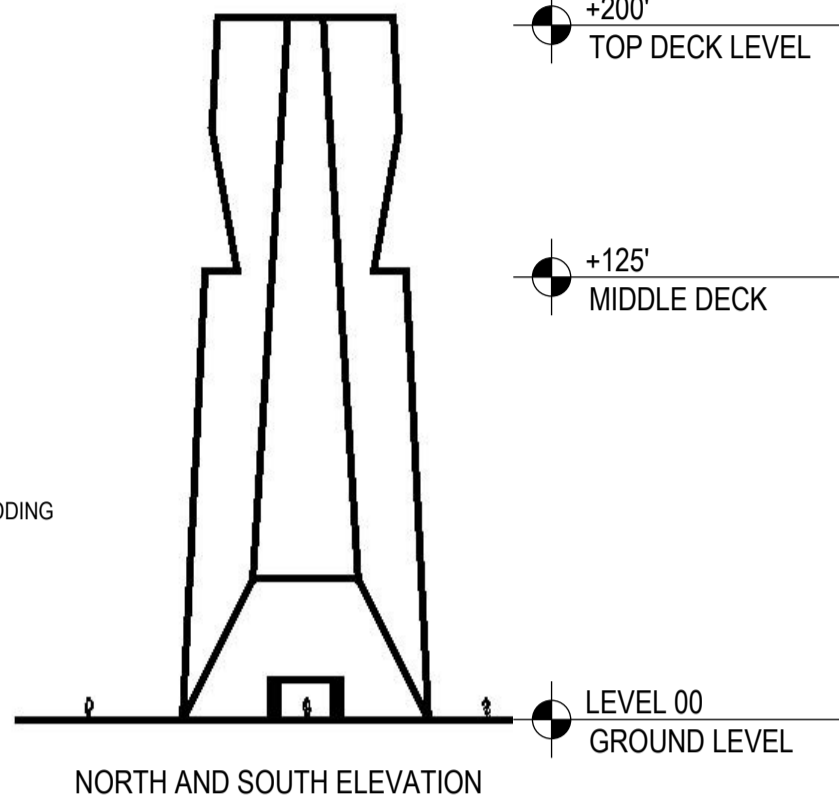
+125'
MIDDLE DECK LEVEL

LEVEL 00
GROUND LEVEL

SECTIONAL SCHEME ALONG NORTH SOUTH AXIS



EAST AND WEST ELEVATION



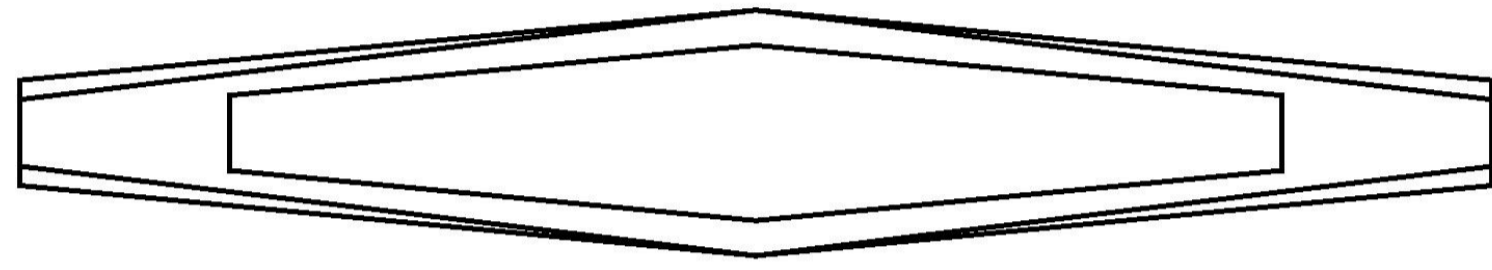
NORTH AND SOUTH ELEVATION

+200'
TOP DECK LEVEL

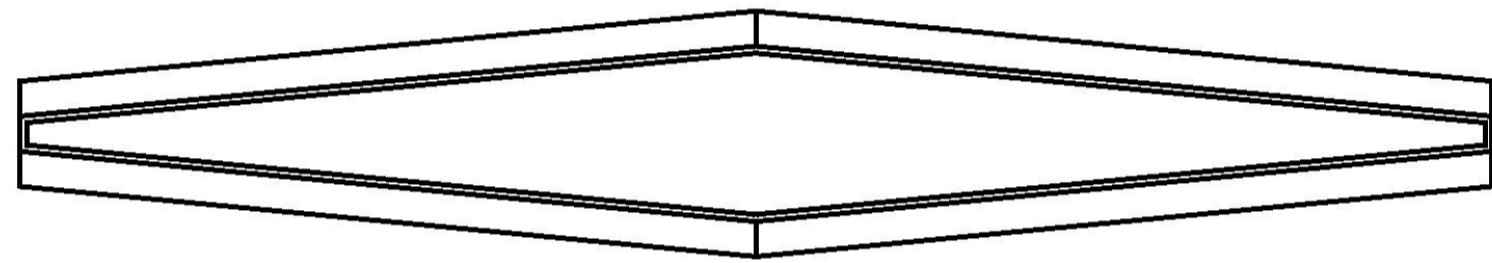
+125'
MIDDLE DECK

LEVEL 00
GROUND LEVEL

WHITE MARBLE CLADDING



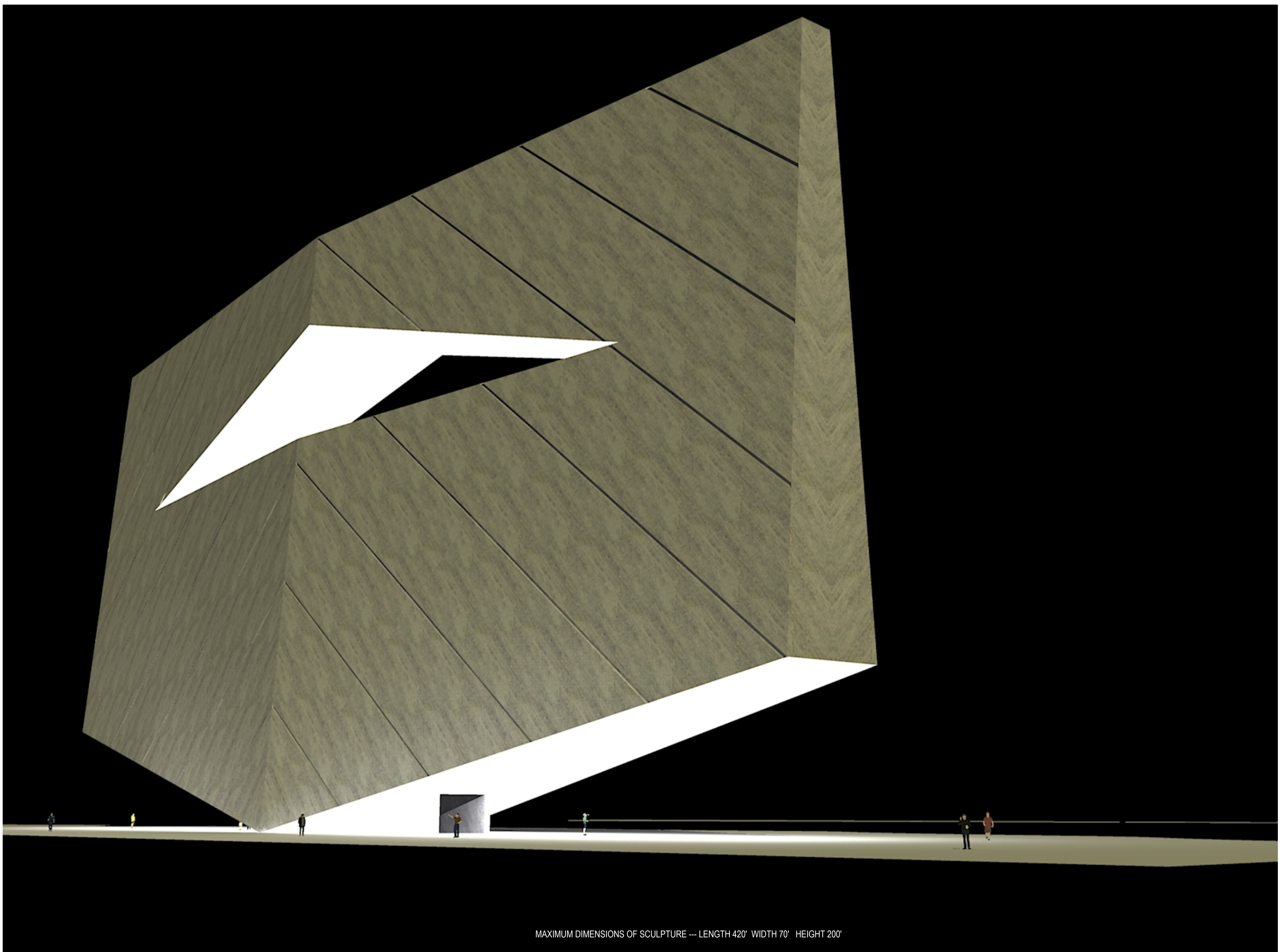
MIDDLE DECK LEVEL PLAN AT +125'



TOP DECK LEVEL PLAN AT +200'

PROPOSED SCULPTURE IS TITLED "EQUANIMITY". IT UNDERLINES THE THEME OF POISE AND BALANCE IN HUMAN LIFE. STRUGGLE AND MISERIES THAT CAN BE MINIMIZED WHEN WE HAVE AN ATTITUDE OF EQUANIMITY TOWARDS THEM. ITS TONE IS CONTEMPLATIVE AND SOLEMN. MAINTAINING GRACE IN TUMULOUS TIMES IS NECESSARY TODAY MORE THAN EVER. ITS MARBLE CLAD MASSIVENESS SITS GENTLY ON THE GROUND. THE FOOTPRINT IS MINIMAL IN COMPARISON TO ITS SIZE. ALL THE EDGES ARE TAPERING CONTINUOUSLY, DYNAMICALLY DIMINISHING. TRIANGULAR CUTOUT FORMS THE MIDDLE DECK WHICH IS FOR OBSERVATION AND CONTEMPLATION. THERE IS ONE TOP DECK FOR OBSERVATION. THE SCULPTURE IS POWERFUL AND EMBLEMATIC IN ITS FORMAL EXPRESSION BUT IT CONVEYS SUBTLE MESSAGE TO HUMANITY.

EQUANIMITY



MAXIMUM DIMENSIONS OF SCULPTURE --- LENGTH 420' WIDTH 70' HEIGHT 200'