

T H E R A M B L E

A walk, a stroll, a run, a trek or a hike are all things to do at The Ramble – a landmark envisioned as an elevated promenade encircling the Guadalupe River Park. This thin occupiable line floats above the creek to create both a figure and place. At the scale of the city it inscribes an unmistakable urban figure in the skyline, while up close, it offers active amenities interspersed along its half mile length for the surrounding community and park.



01.

This thin occupiable line floats above the creek to create both a figure and a place. At an urban scale, it inscribes an unmistakable urban figure, while up close, it provides active amenities for the surrounding community and park.

02.

Not exactly a tower but rather a place, this proposal outlines an urban amenity designed to embrace a wide range of public uses – an act of place-making that overlays new programmatic possibilities on to its already rich context below.

03.

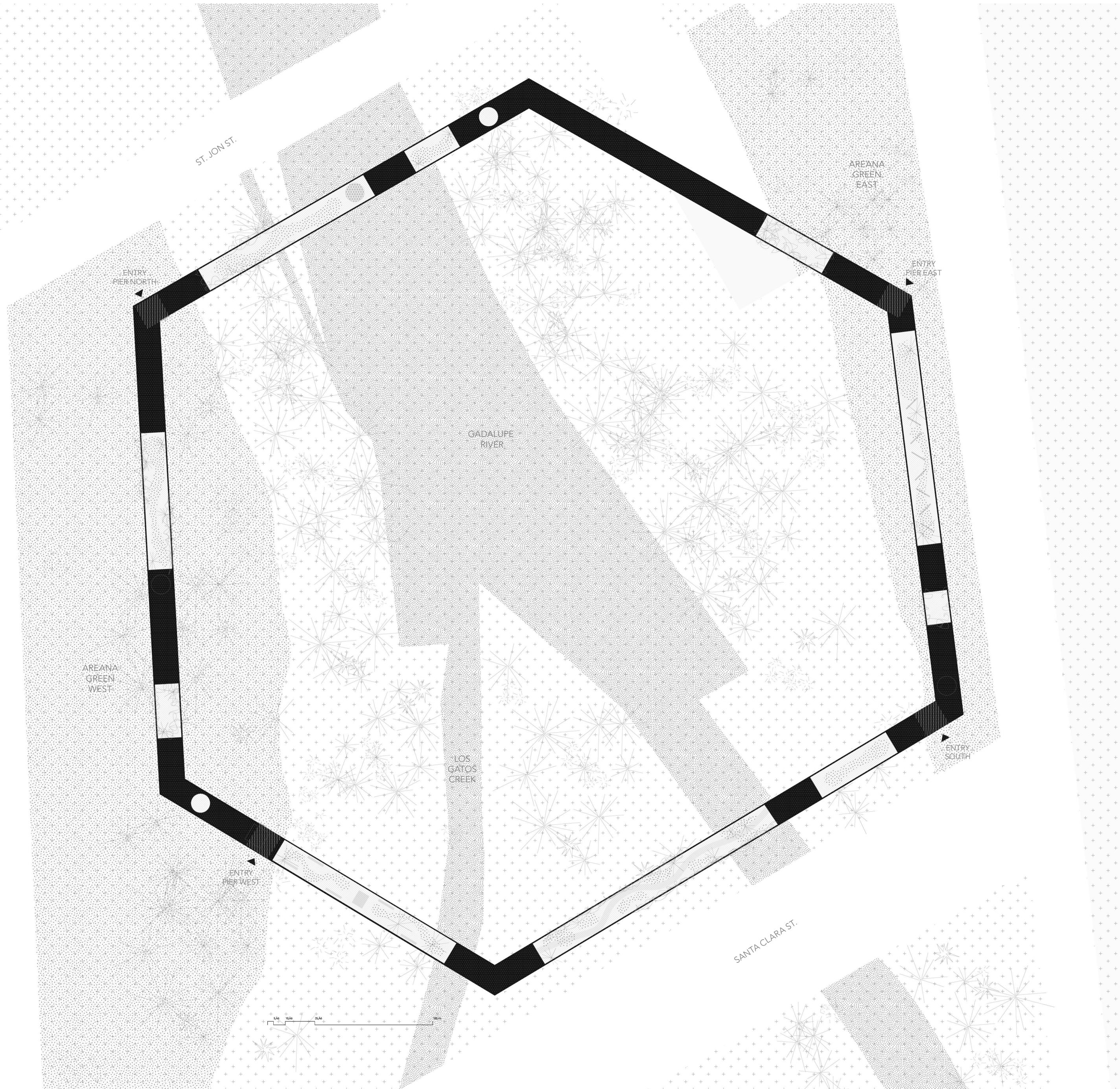
The raised promenade has a minimal footprint on the park by resting on four strategically located piers on both sites to bridge over the confluence. Visitors enter from any one of the footings to rise to an elevated path dotted with gardens, trails, lookouts, and leading to several community and cultural amenities within.

04.

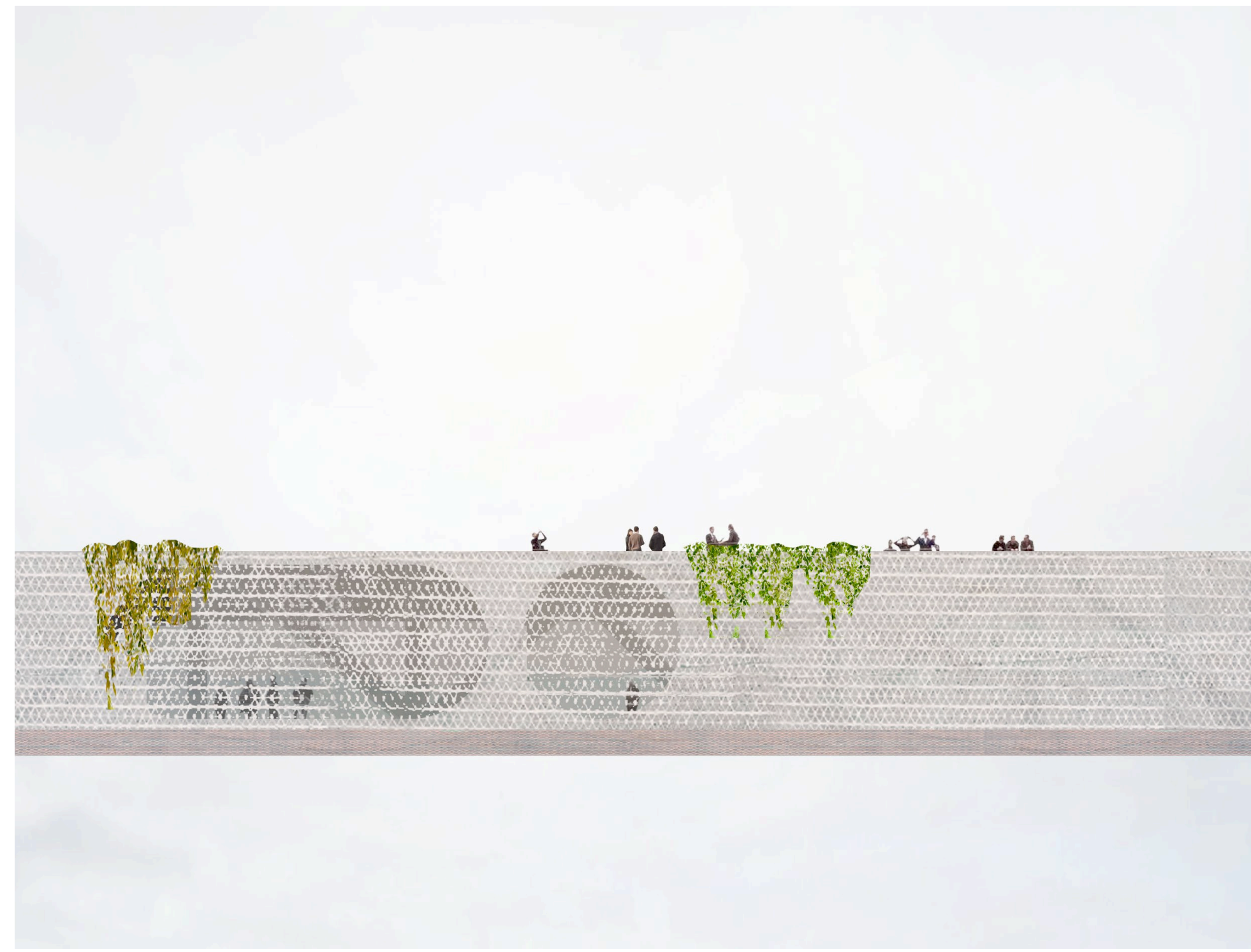
The Ramble offers a series of possibilities for outdoor and indoor use along its length. It allows for a range of spatial qualities and environments that accommodate passive or active programs like a cafe, library, market, community rooms, observation decks and gardens interspersed along its half mile length.

05.

At its core, The Ramble is an active urban destination for people to visit multiple times. It responds to the idea that a new landmark in the city needs to not only create a new visual anchor in the skyline, but become a useful piece of social infrastructure for multiple publics in the city.



PLAN OVER THE CONFLUENCE WITH MULTIPLE GARDENS AND OVERLOOKS

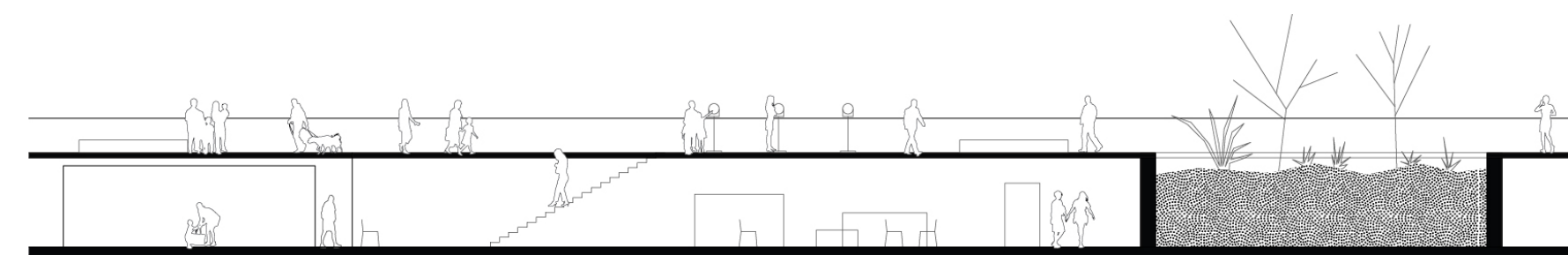


A LINE IN THE SKY OCCUPIED INSIDE AND OUT

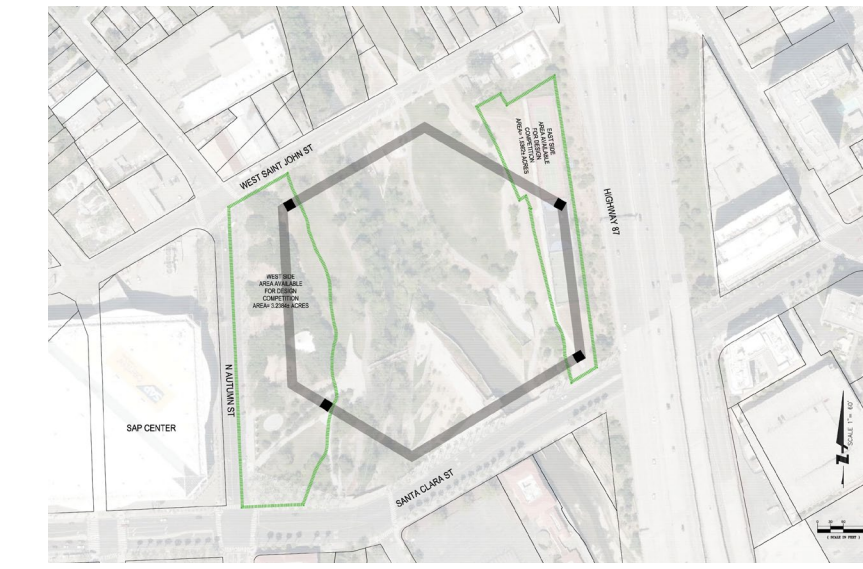
A CHANGING PROFILE

During the day The Ramble inscribes a thin line that crowns the Guadalupe Rive Park and is visible across the city, the mountains and the air. Given its size and changing elevation, it offers a changing profile from different vantage-points throughout the city, and much like Silicon Valley, its is an ambitious project that represents a culture in constant flux.

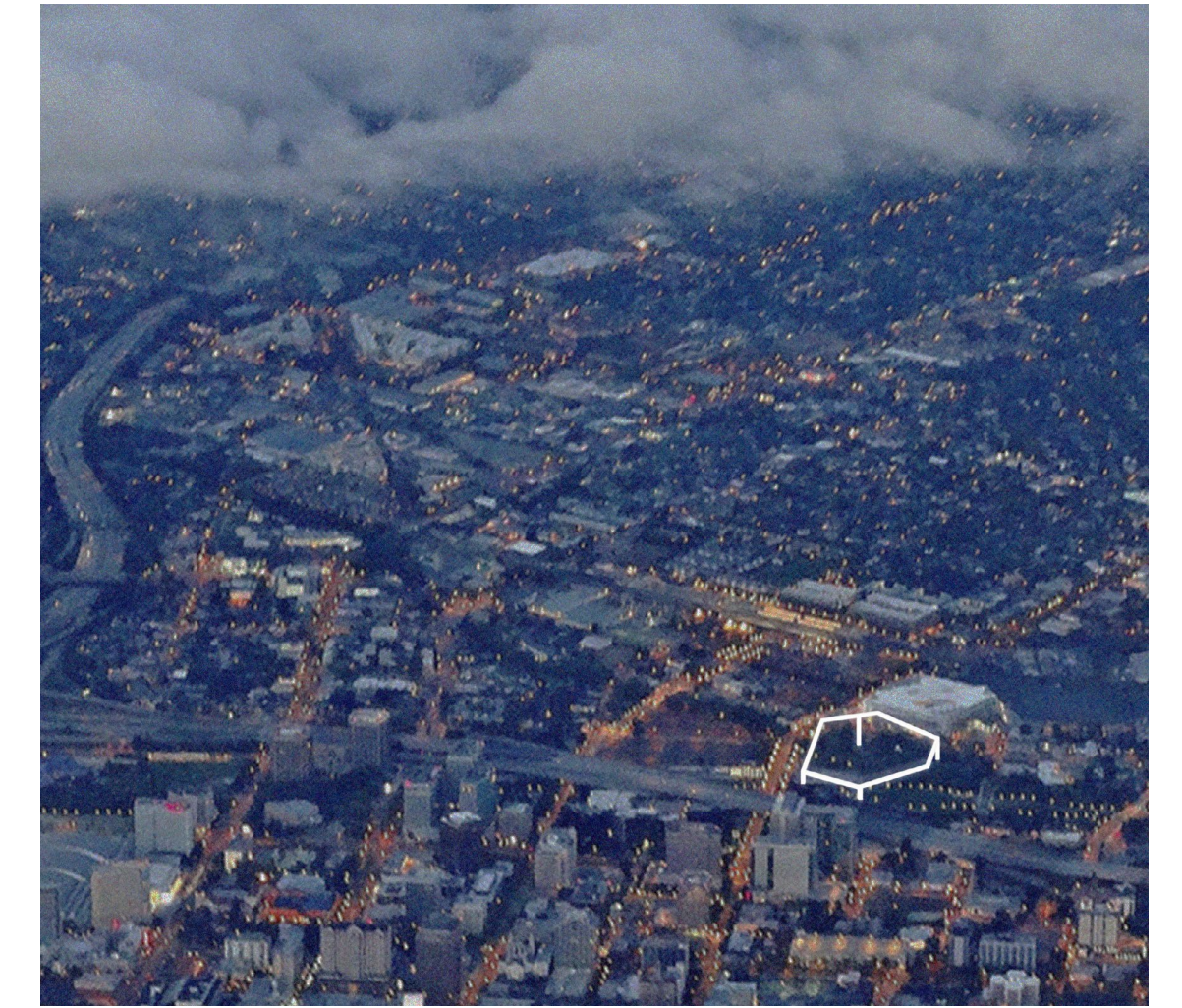
The structure's surface, made of a porous GRFC lining, appears heavy and solid in direct sun but allows for filtered views from within. At night, illuminated from the inside-out it inscribes its luminous profile in the skyline. Any proposed lighting strategies are measured in relation to the environmental needs of the surrounding context to limit impact on the natural ecosystem.



LONG SECTION THROUGH TYPICAL SPACES



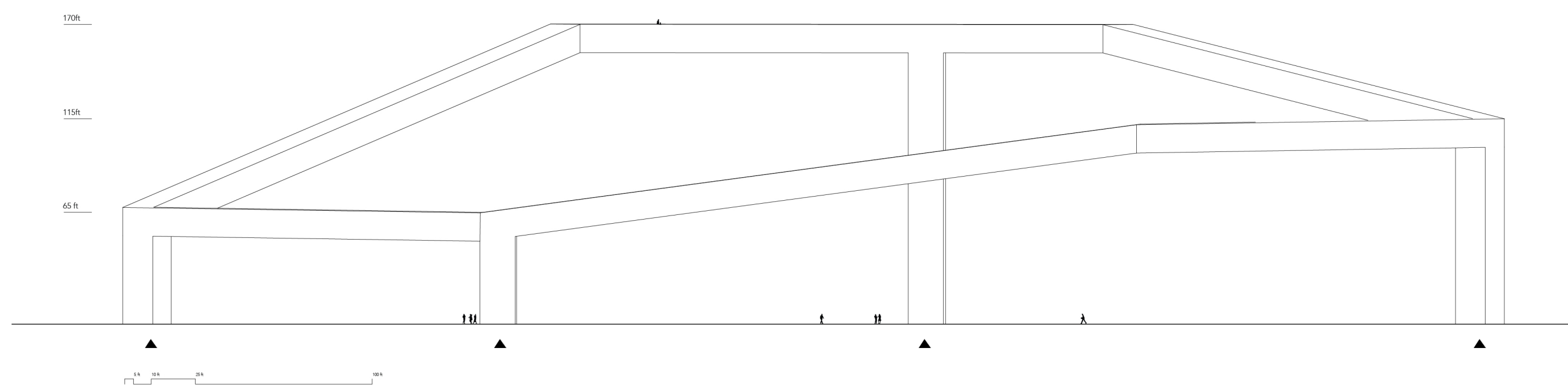
OFFICIAL SITE MAP SHOWING FOUR SUPPORT POINTS



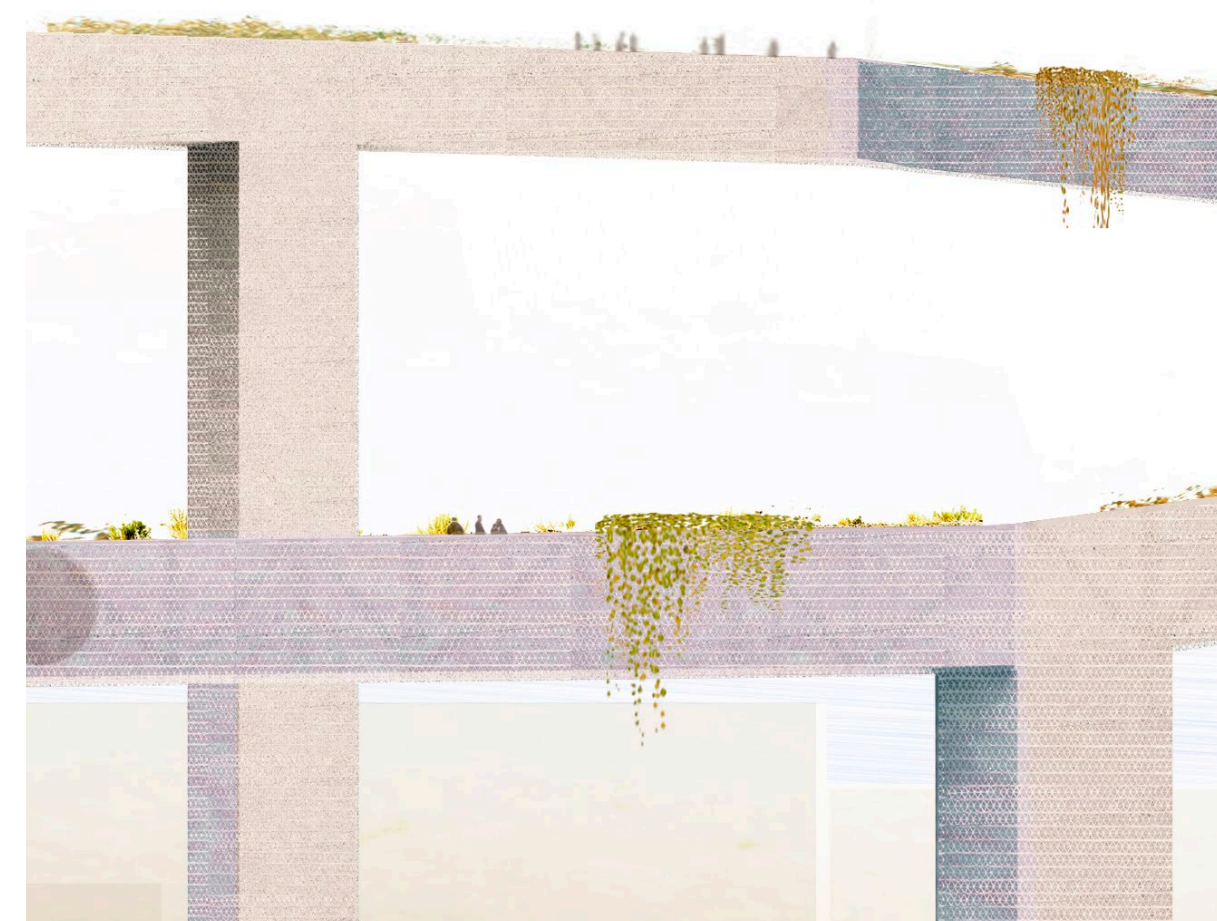
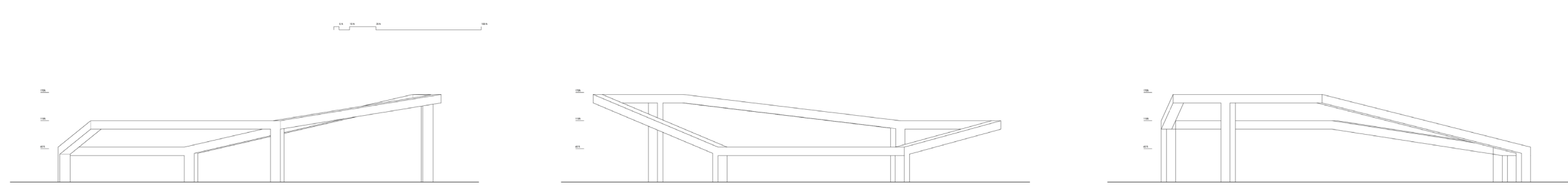
VIEW OF THE RAMBLE FROM THE AIR



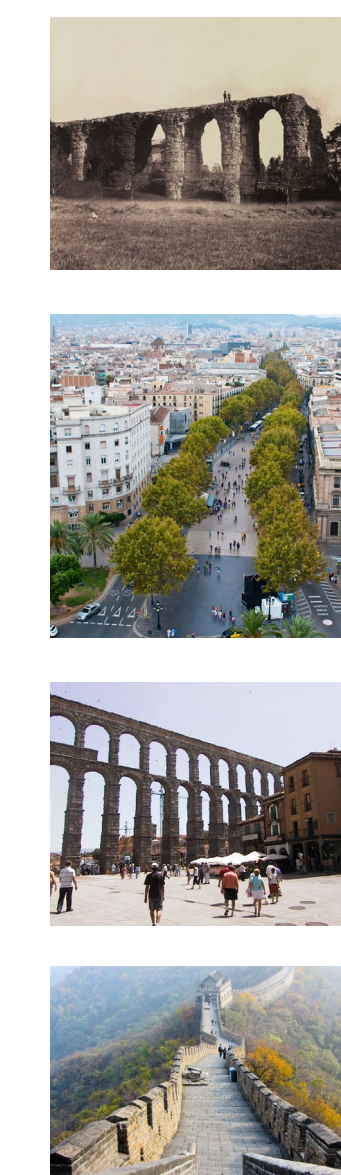
POSSIBLE CROSS SECTION USES INSIDE THE RAMBLE



A CHANGING ELEVATION FROM DIFFERENT POINTS OF VIEW



DETAIL OF THE RAMBLE WITH HANGING GARDENS



LINE AS MONUMENT



A GREEN BELT CROWNS THE CONFLUENCE POINT