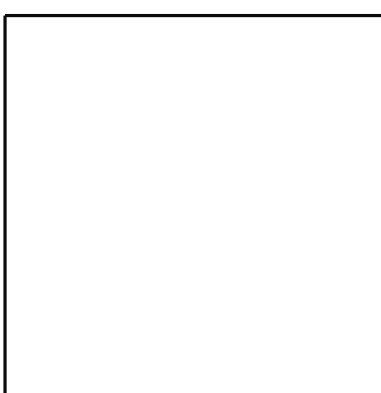
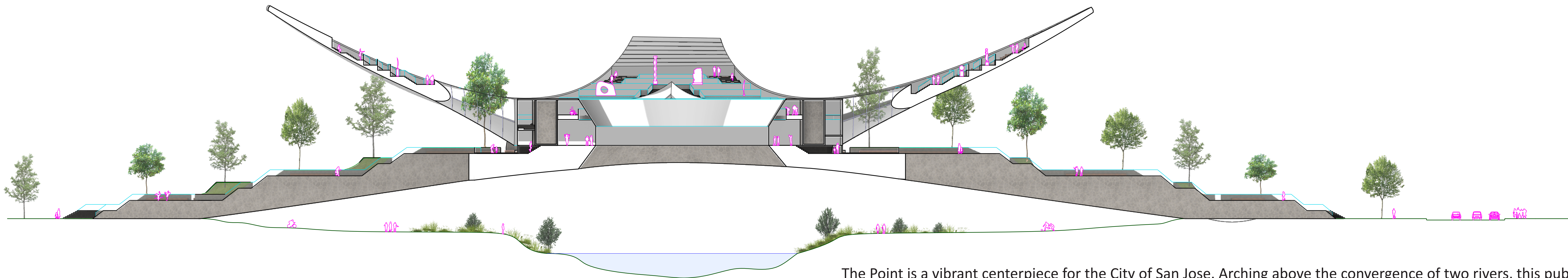
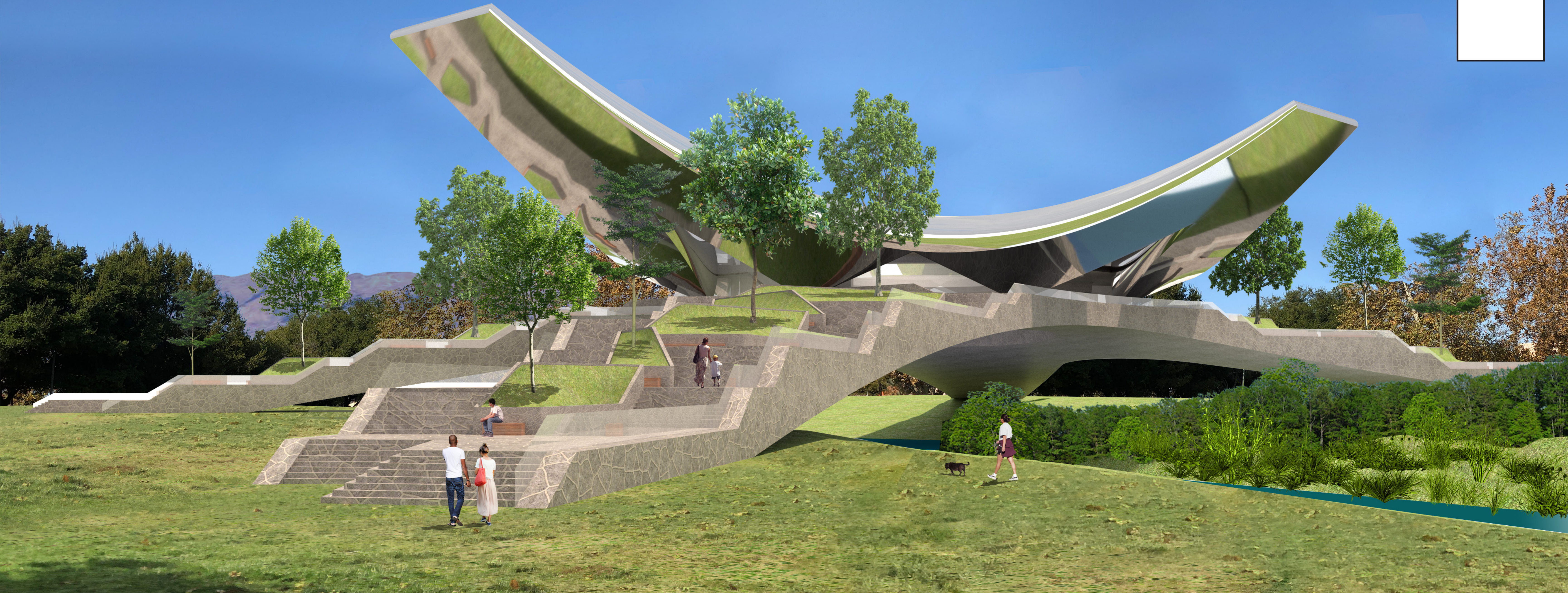
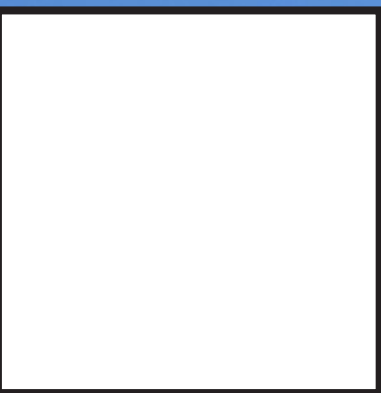
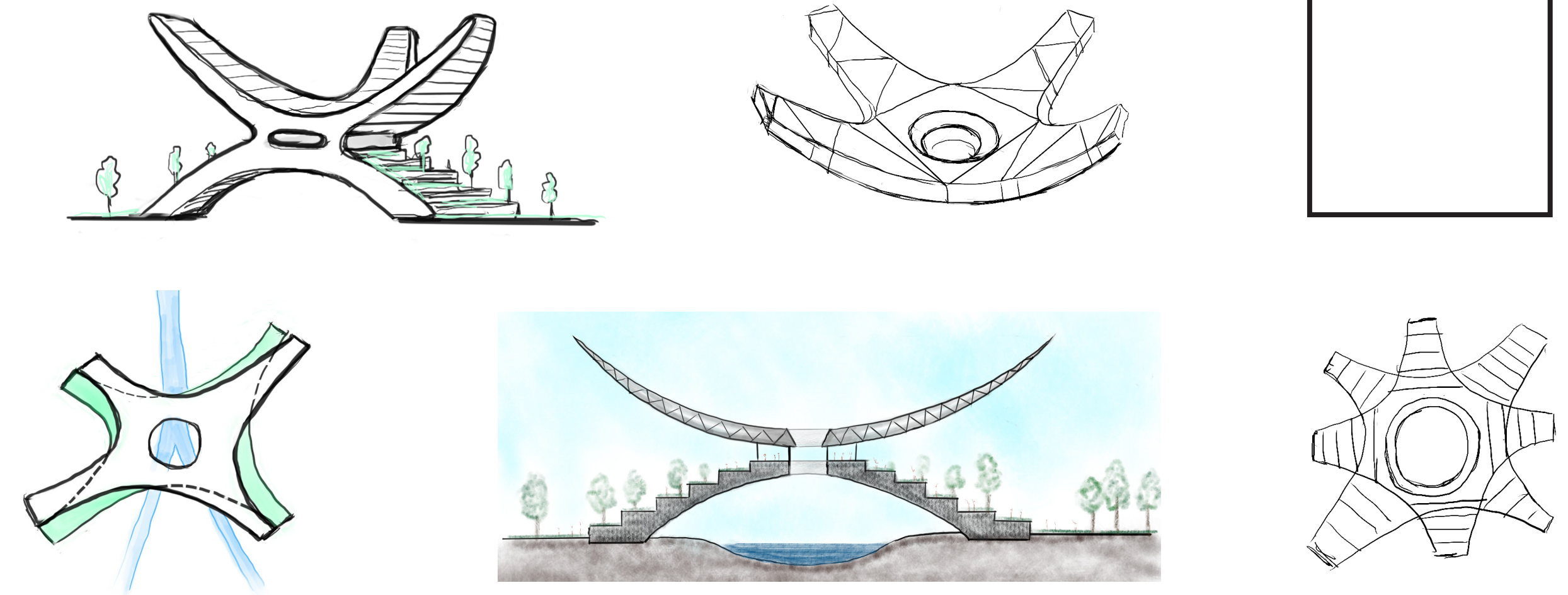
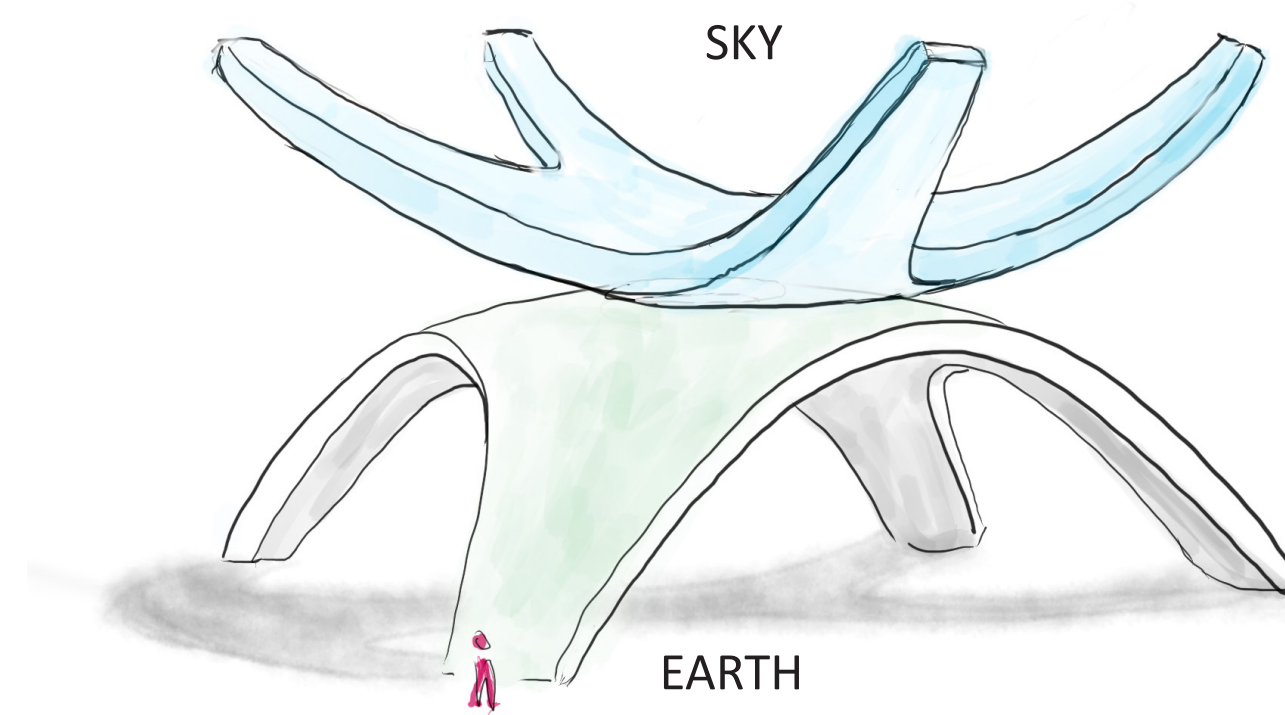
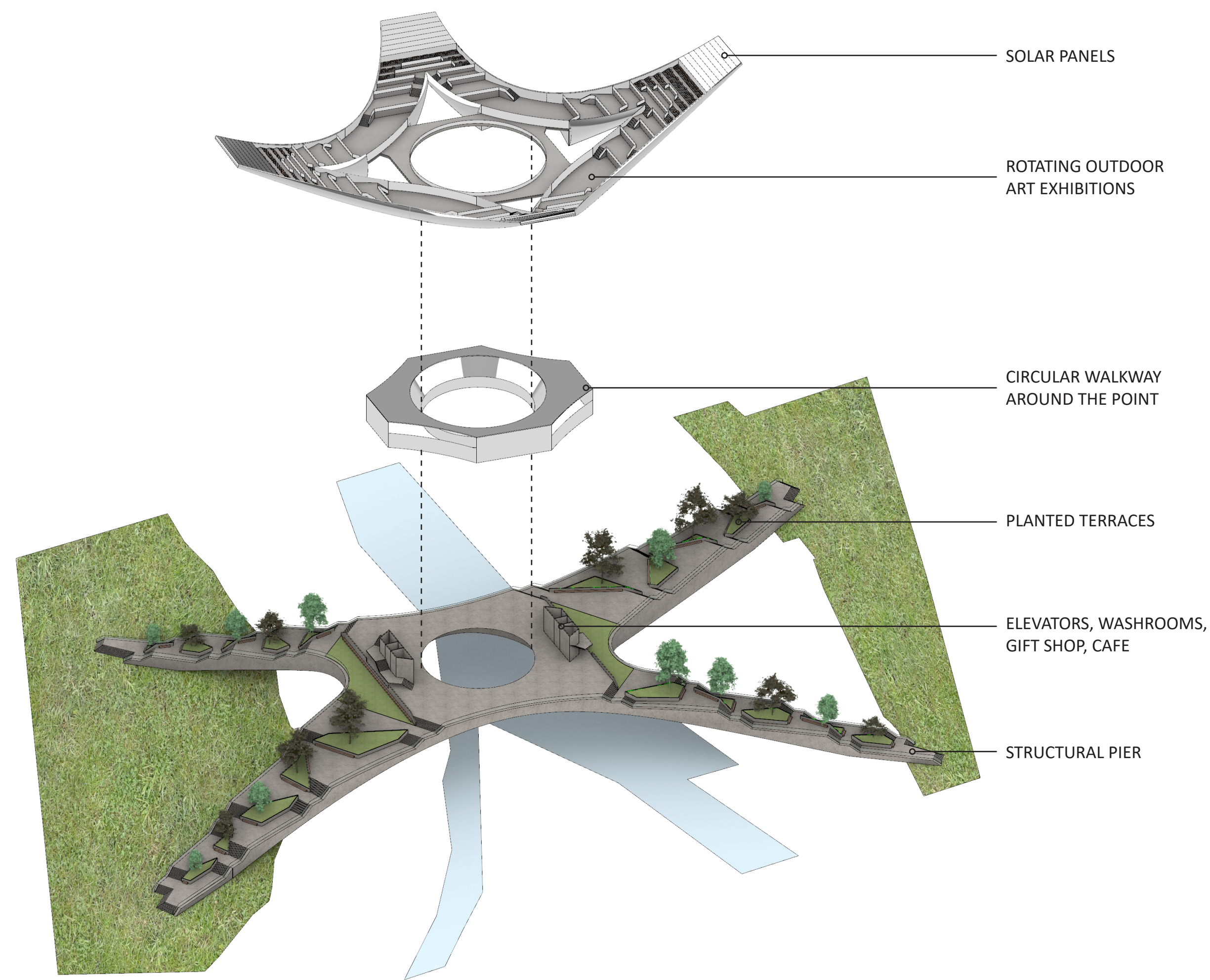


THE POINT



The Point is a vibrant centerpiece for the City of San Jose. Arching above the convergence of two rivers, this public icon creates a unique intersection between earth and sky. Part infrastructure and part artwork, it encourages residents and visitors to gather and explore, reflect and connect. By pairing the garden and the gallery, the real with the imaginary, The Point becomes a soaring symbol of balance and harmony. It invites us to discover new ways of seeing and experiencing San Jose.



The Point is where the earth and sky meet each other as converging hyperbolic surfaces. At the base, four portions of Guadalupe Park rise up to become arching bridges that connect into a central circular walkway. Above this a curved sculptural vessel opens up to become an outdoor art gallery in the sky.

The garden bridge is robust and alive with plants and trees, hosting picnics and small gatherings on the many planted terraces facing out toward the city. It has a rough-hewn stone finish suggestive of the natural river rocks below. The gallery above is a more abstract and contemplative space that delicately touches down on the base. In contrast to the earthen bridge, the gallery is composed of super smooth, reflective glass and metal that mirror the sky and city.

The design pays homage to two of the Bay Area's most significant assets - abundant natural beauty and technological innovation. The building celebrates and increases the surface area of the existing park by adding trees, plants, and landscape features. Meanwhile the smooth shiny curves of the gallery above references an imagined future made possible by advanced robotic tools and state-of-the-art materials.

Above all, The Point encourages us to come together and share our experiences. More than a swooping architectural stunt, it is fundamentally a new kind of social landscape. Bouth noun and verb, it takes us on an urban hike from the familiar to the whimsical and back again, offering a myriad of new perspectives along the way.

