

VIEW OF THE OPEN-AIR PANORAMIC TERRACE
3House Project / Rendering

3HOUSE

CONNECTION POINT SAN JOSÉ

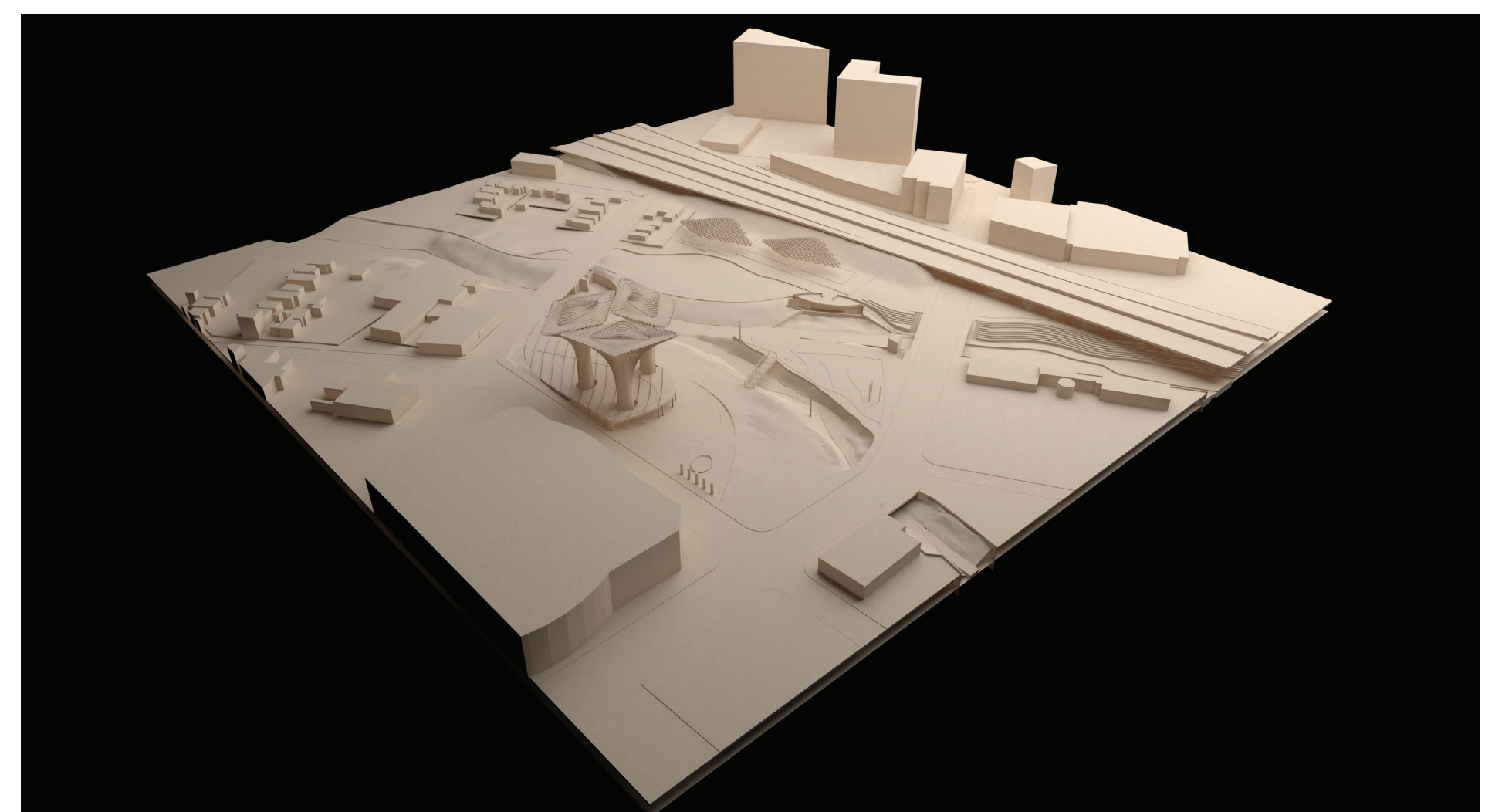
The “3House” project - in its design and conception – will give a new impulse to the city of San José, become a contemporary architectural, environmentally friendly landmark of the region and introduce a modern gathering place for people of all ages and abilities, residents and visitors alike. The project is conceived as a cluster of three filigree vertical structures that raise and open up into a tree-like-canopy. At the same time, in its purpose, it resembles a tree house providing leisure opportunities and an observation point. Each of the three structures will be 172 feet tall.

The organic forms of the project are in harmony with the nature of the Arena Green city park and relate strongly to the confluence point of Los Gatos Creek and the Guadalupe River. Similar to the bifurcation at the confluence of those two rivers the three structures branch in height, to meet up again and to form the interconnected publicly accessible open-air panoramic terrace, offering wonderful views towards Southern California Coast Ranges and the city skyline of downtown San José.

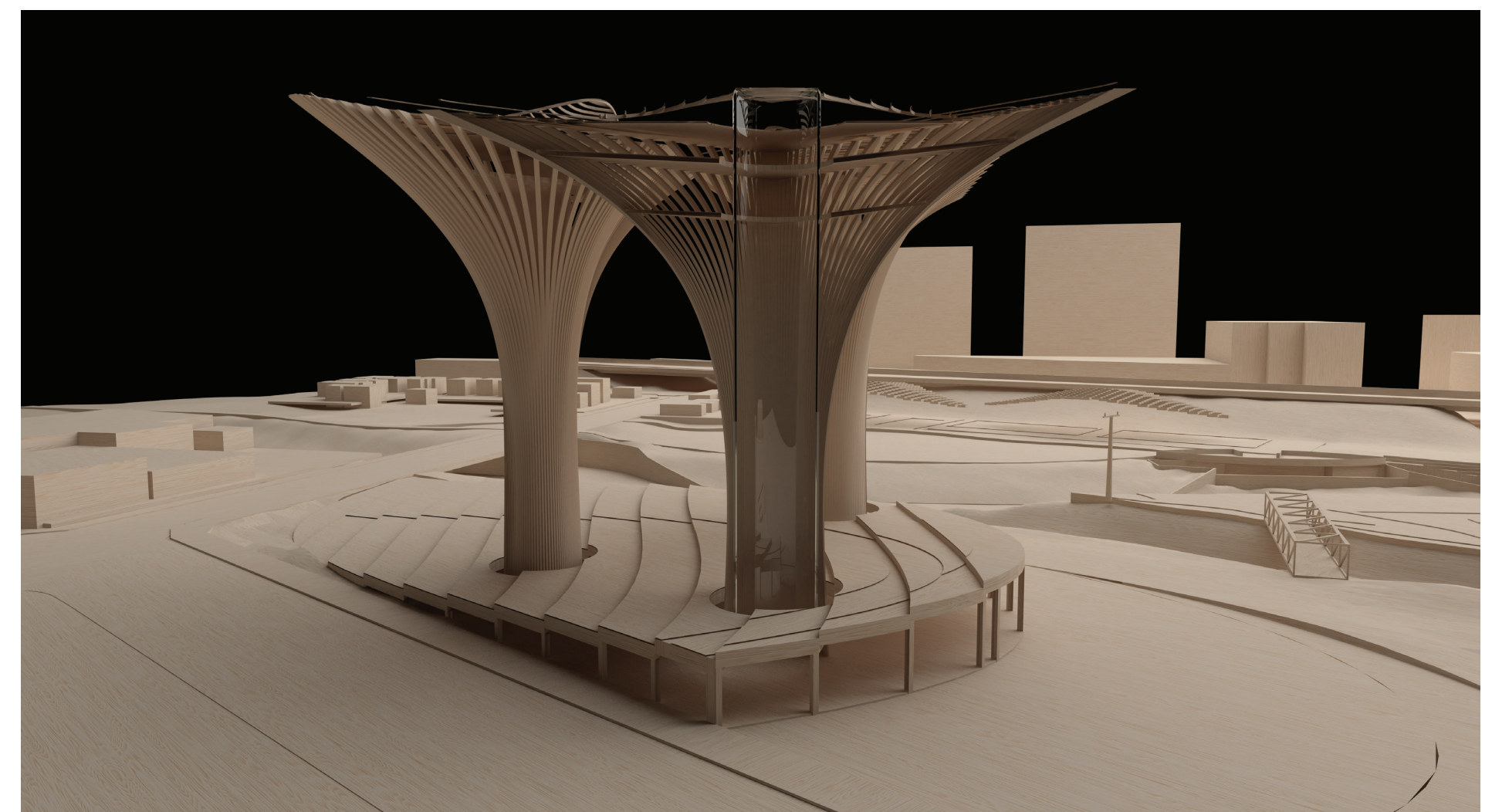
However, the “3House” project is much more than that. The cluster will house Cabinets of Curiosities with temporary exhibitions dedicated to science, arts and nature, as well as cafes, bars and restaurants. The proposed urban scheme is introducing a public piazza in front of the entrance, which respectfully embraces the Five Skaters Monument. The sport fields, which are kept on site will be partially covered with two large scale canopies.

Taking its cue from biology, the structural design is solved as an exoskeleton with an array of vertical ribs and becomes main architectural feature of the project. It will not only maximize the usable interior space, but also thanks to its porosity, the amount of sunlight penetrating through. The energy for the “3House” will be generated by the two canopies, installed above the sport area and equipped with photovoltaics. Additionally, solar cells will be installed on the roofing of the platforms. This solution will allow the facility to operate on a net-zero energy use basis and also contribute to its net-zero carbon emissions.

Through its unique, multipurpose design the “3House” project explores the potential of Arena Green Park to become a contemporary landmark and a vital part of the city, welcoming visitors of all ages and backgrounds.



SITE MODEL
3House Project / Arena Green



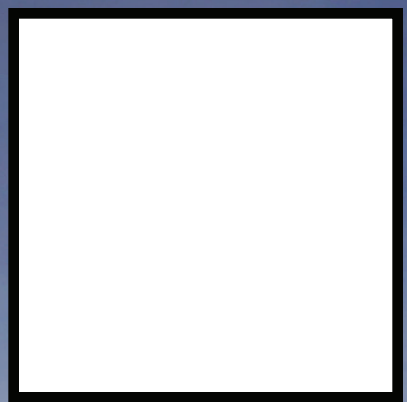
VERTICAL SECTION
3House Project / Arena Green

VIEW FROM WEST SAINT JOHN ST
3House Cluster / Rendering



AERIAL VIEW OF ARENA GREEN SITE
3House Project / Rendering

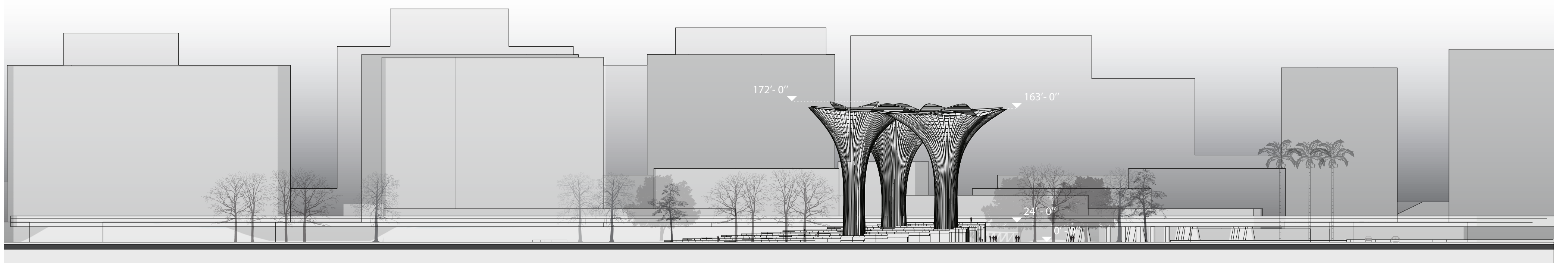
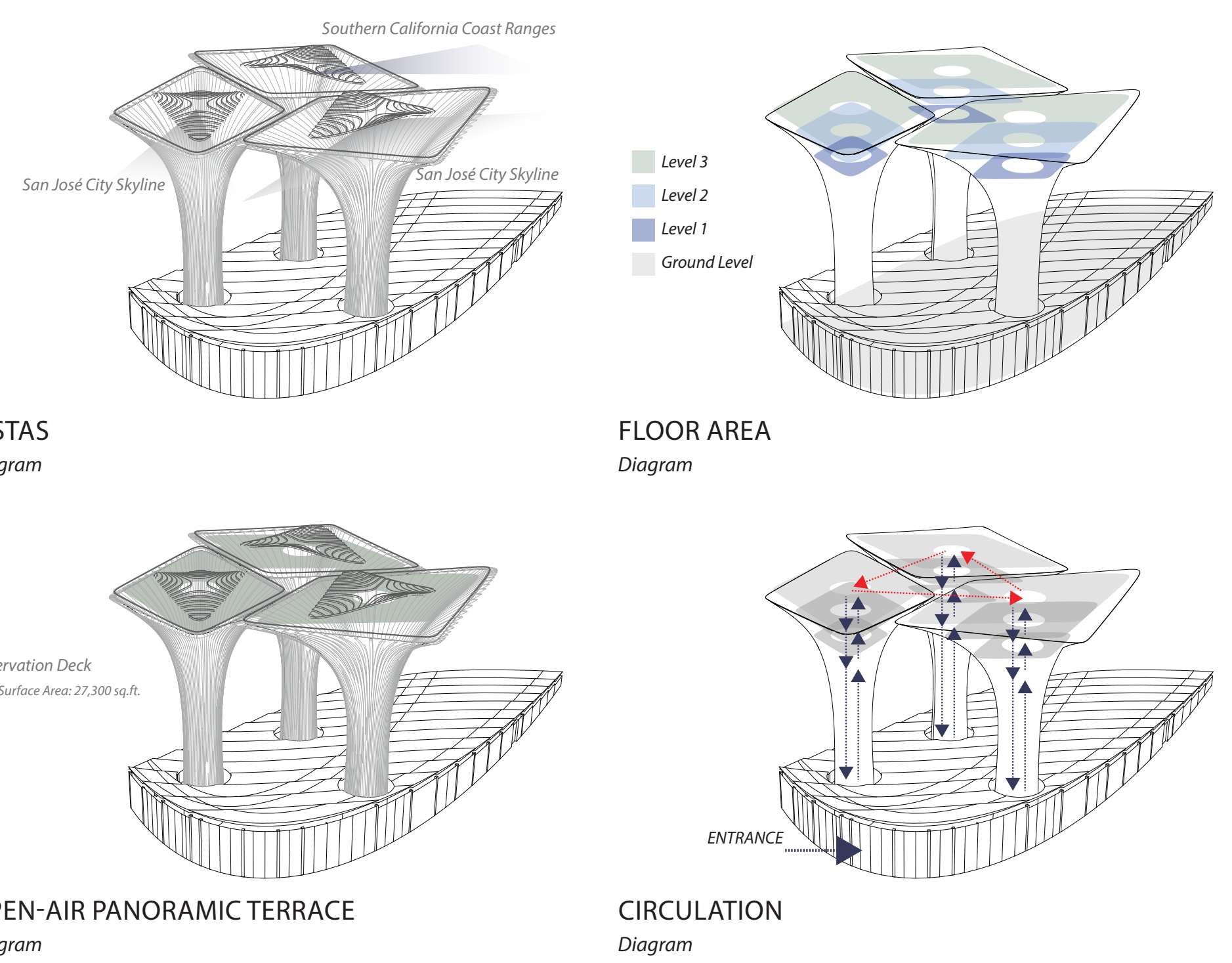




VIEW FROM ARENA GREEN PARK
3House Project / Rendering

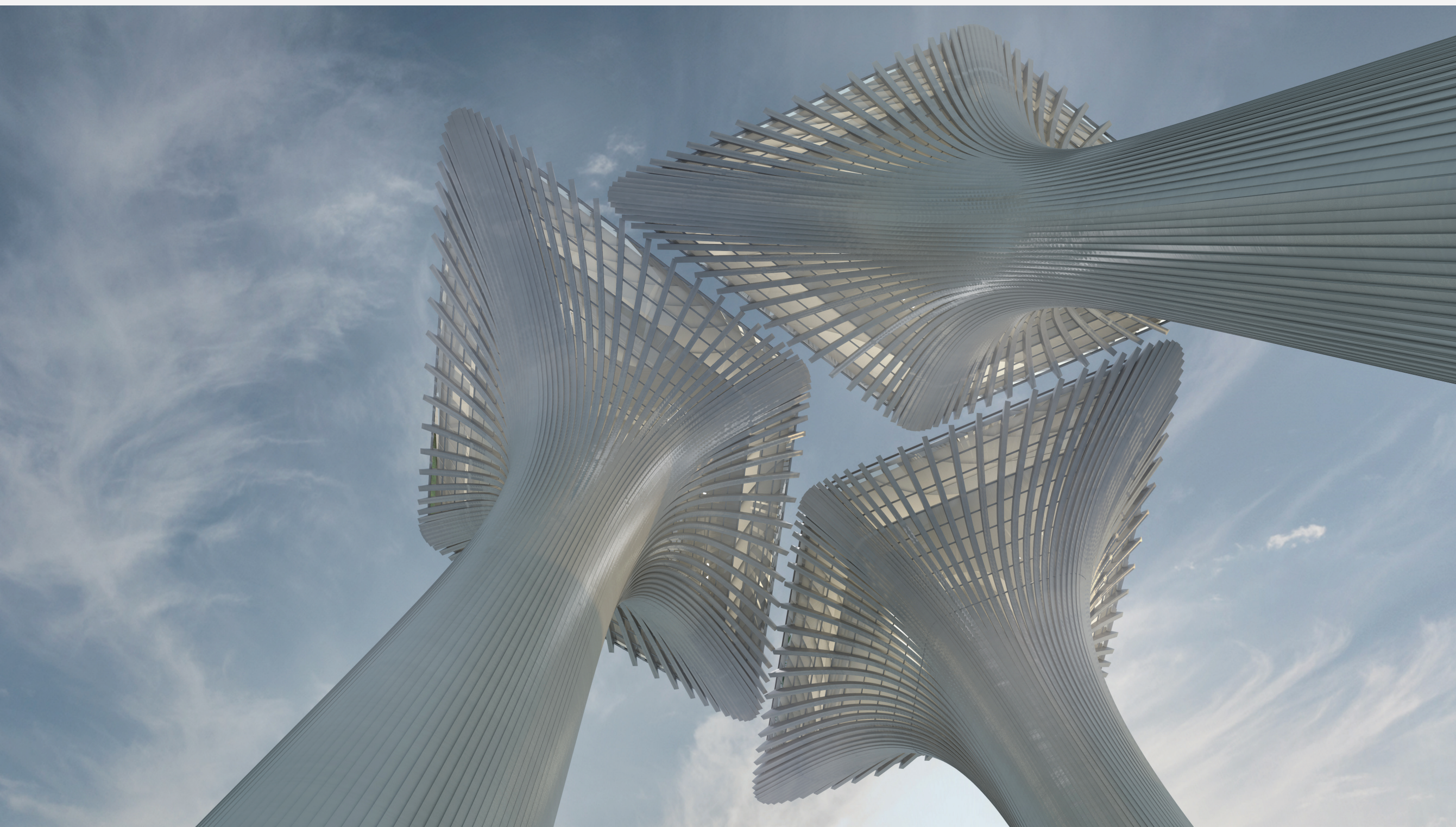


SITE PLAN
3House Project / Arena Green



WEST ELEVATION
3House Project / Arena Green

VIEW FROM BELOW
3House Cluster / Rendering



VIEW FROM N AUTUMN ST
3House Project / Rendering

