

SYNTHESIS OF DUALITY

CONFLUENCE



Confluence noun [C] /geography / specialized /

1. (specialist) the place where two rivers flow together and become one.

the confluence of the Blue Nile and the White Nile

2. (formal) the fact of two or more things becoming one.

a confluence of social factors

Definition of confluence noun from the Oxford Advanced Learner's Dictionary

TWO STREAMS

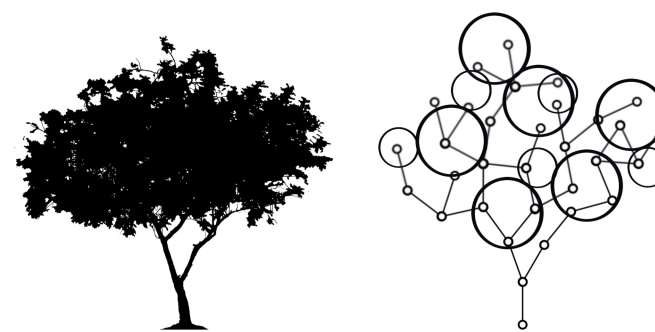


Distinctive characteristic of the site selected as the project location is undoubtedly the confluence point of Guadalupe River and Los Gatos Creek. The two streams merge into one strong water body which splits the city of San Jose.

The design uses that as an inspiration and a metaphorical expression of duality.

Remarkably so, the city itself can be described as a union of two powerful forces: Nature and Technology.

TWO FORCES



Nature is one of the two forces which make San Jose a special place. The city is surrounded by picturesque mountainous landscapes and numerous lush green parks, connected by a vast network of trails. Great Mediterranean climate attracts wildlife, which although affected by city growth and other factors, is steadily growing back.

Technology is the other force that shapes the city. Crowned as the unofficial "Capital of Silicon Valley", San Jose is the epicenter of cutting-edge innovation and its influence reaches every part of the globe.

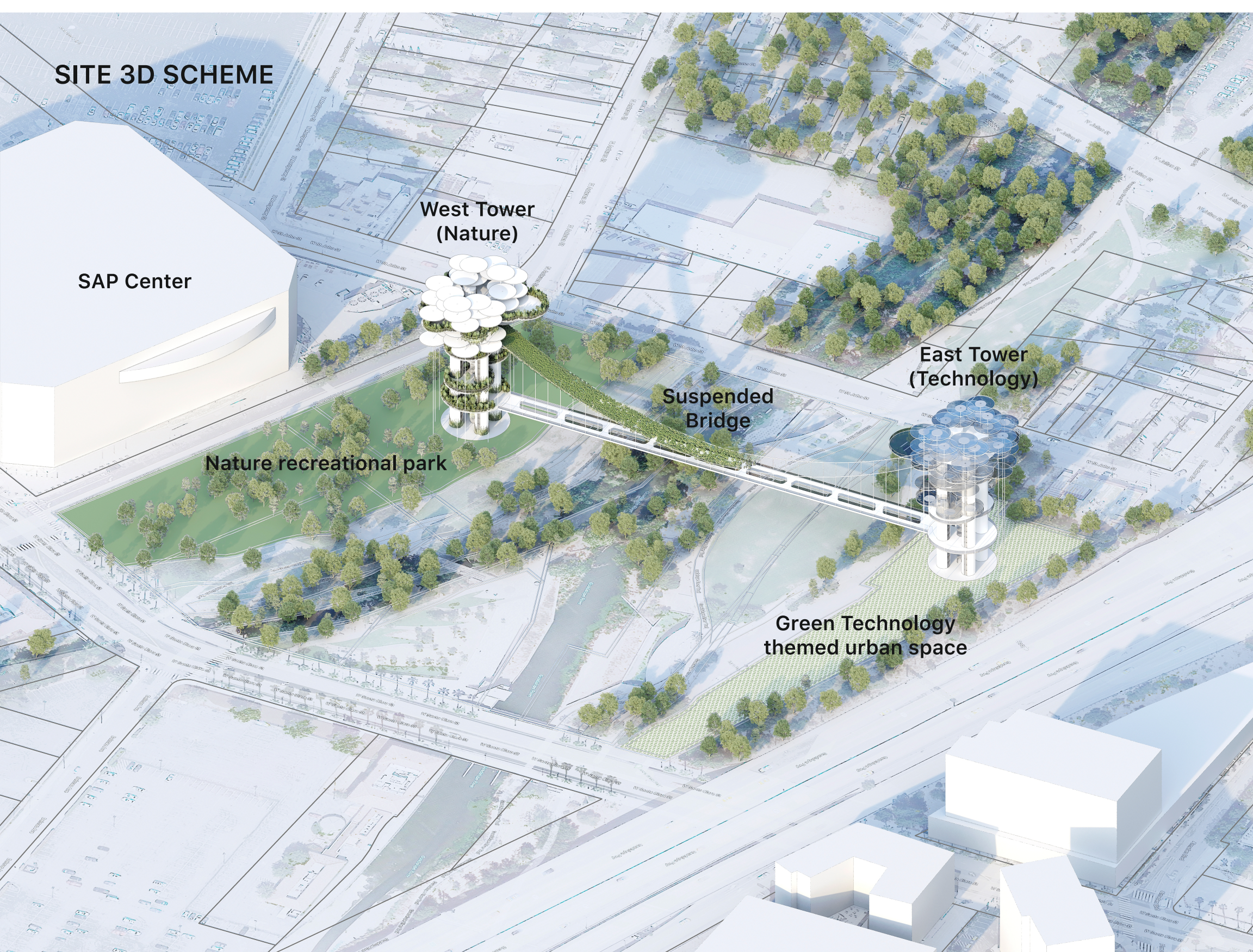
ONE SYMBOL



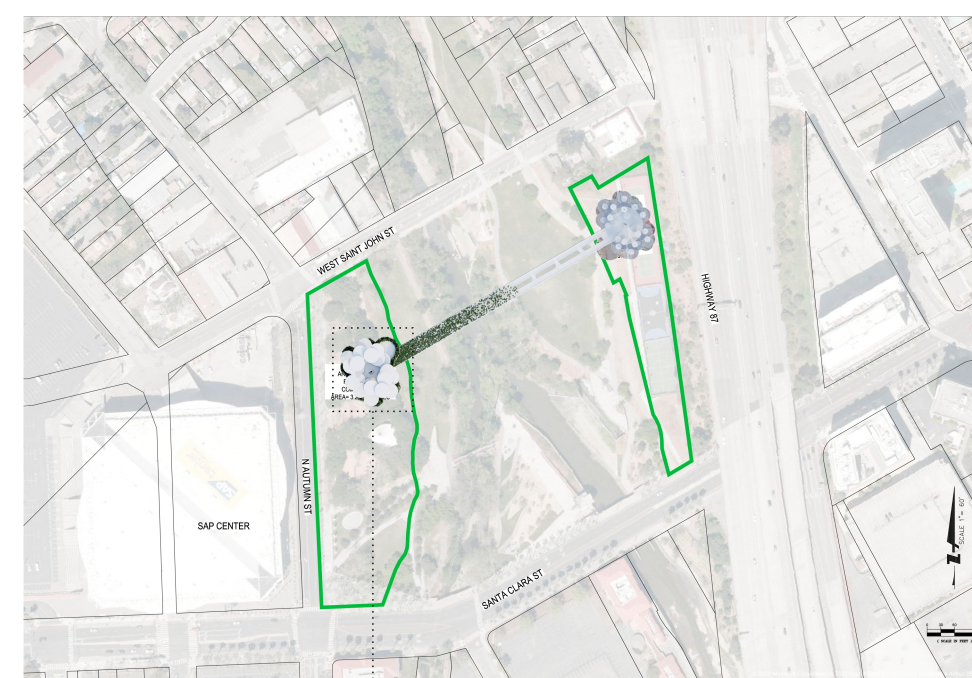
At the meeting point of two rivers, the very site suggests the concept of two forces becoming one.

The design aims to be an embodiment of confluence. It consists of two observation towers connected by a pedestrian bridge between them. One of the towers symbolizes Nature, while the other one — Technology. Both offer drastically different experience, however one cannot exist without the other.

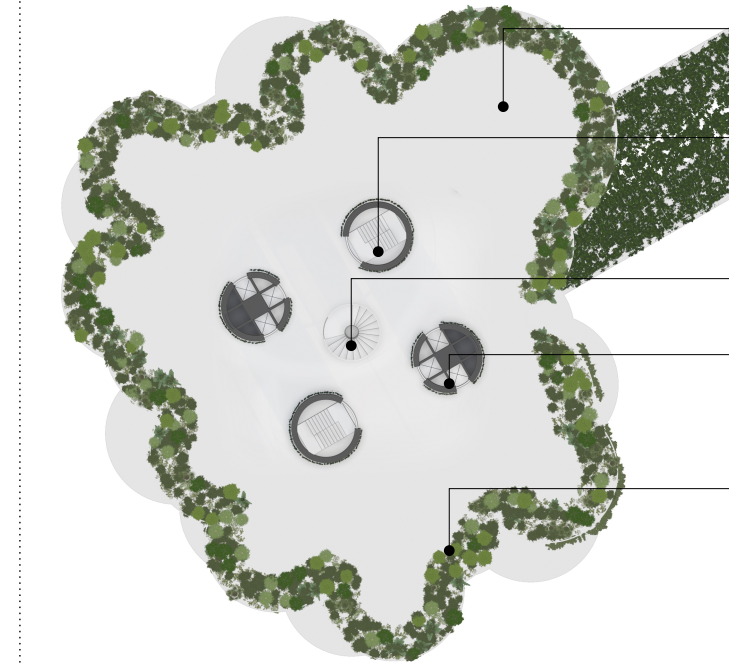
The concept takes the idea of duality and makes it a symbol of our new, green and sustainable, yet innovative, future.



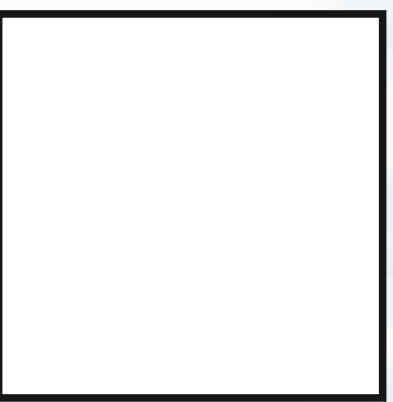
SITE MAP



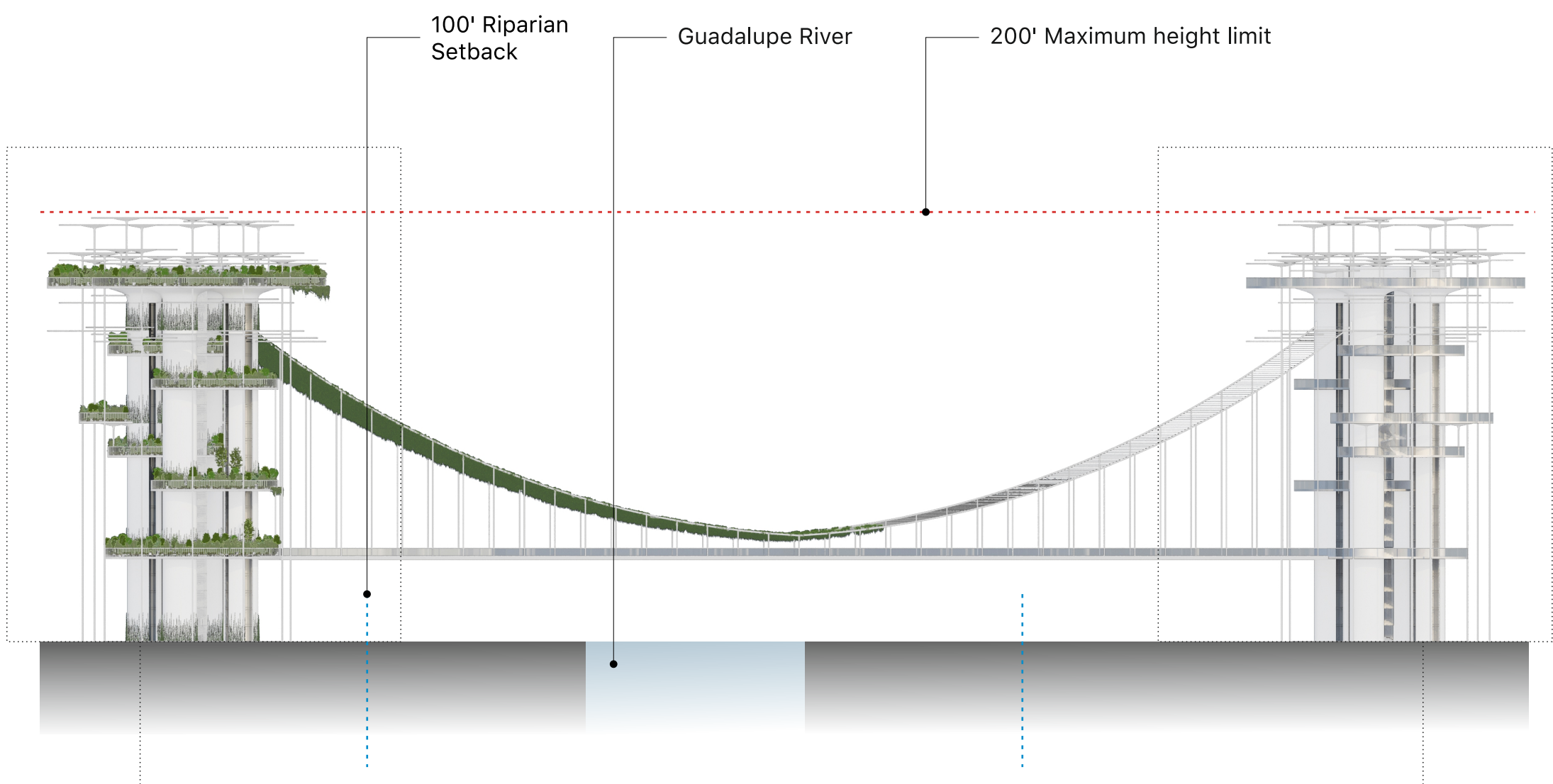
WEST TOWER LAYOUT



- Open observation deck
- Protected staircase (fireproof)
- Open spiral staircase
- Elevators (small capacity elevators to be used by maximum 2-3 people due to sanitary precautions)
- Planters



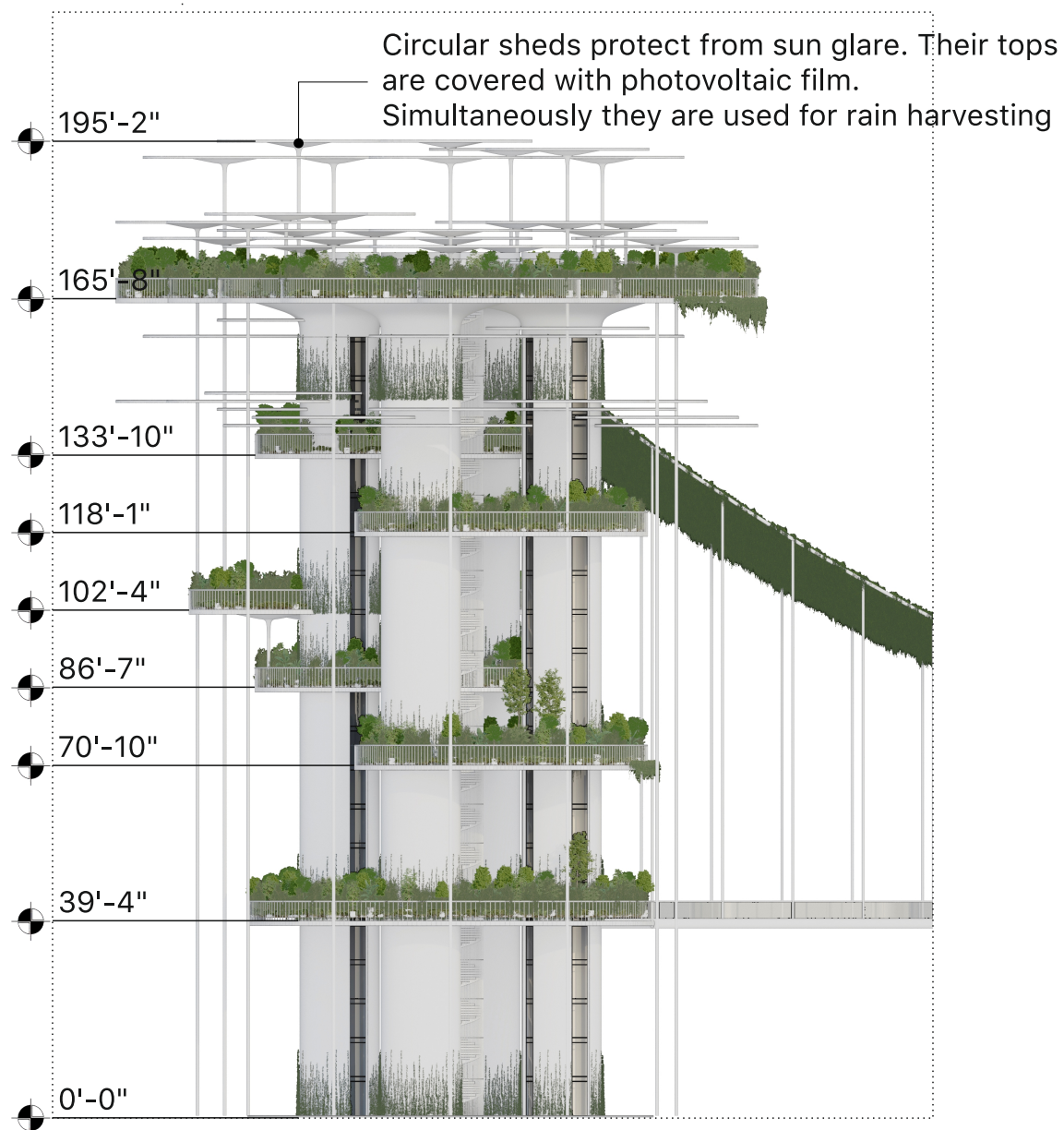
SOUTH ELEVATION



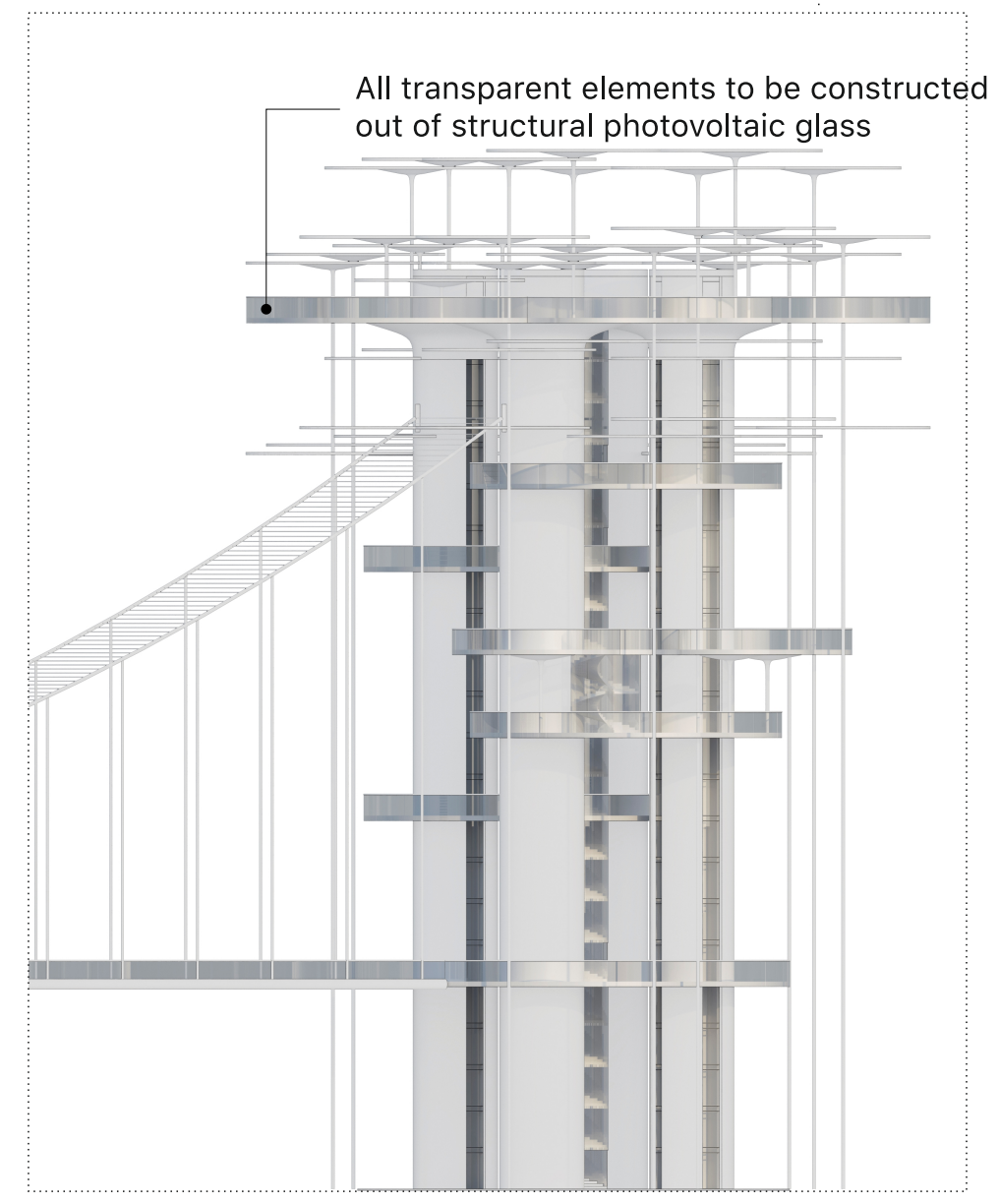
WEST TOWER AT NIGHT



WEST TOWER ELEVATION



EAST TOWER ELEVATION



EAST TOWER AT NIGHT

