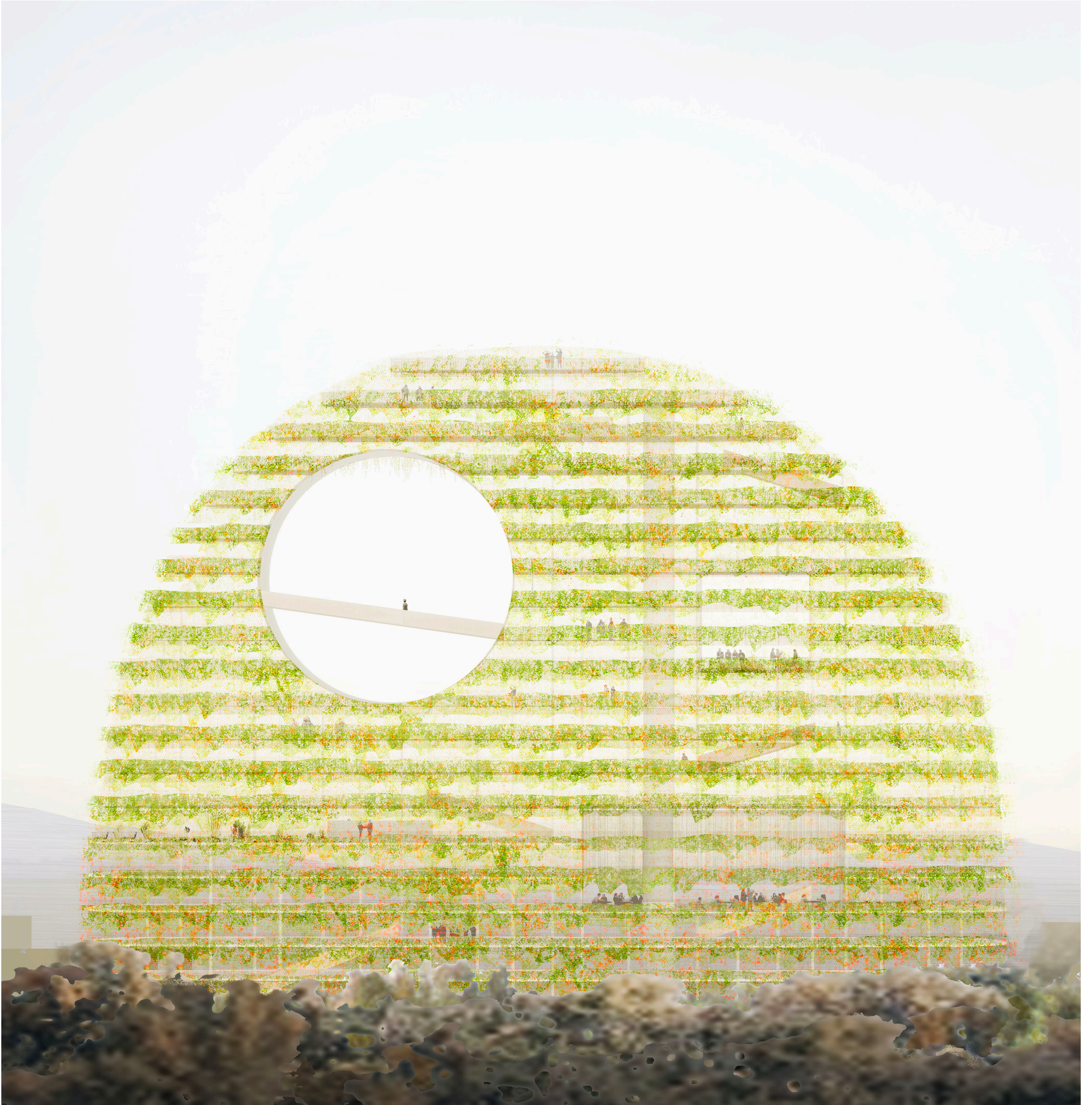


Overlook Hill



1.

Overlook Hill is a topographical formation set within the urban landscape of Santa Clara Valley. Conceived as a living landmark that vertically extends the Guadalupe River Park, it provides a series of occupiable viewing platforms, community spaces, and public amenities for downtown San Jose. It is conceived as an open scaffolding for urban life.

2.

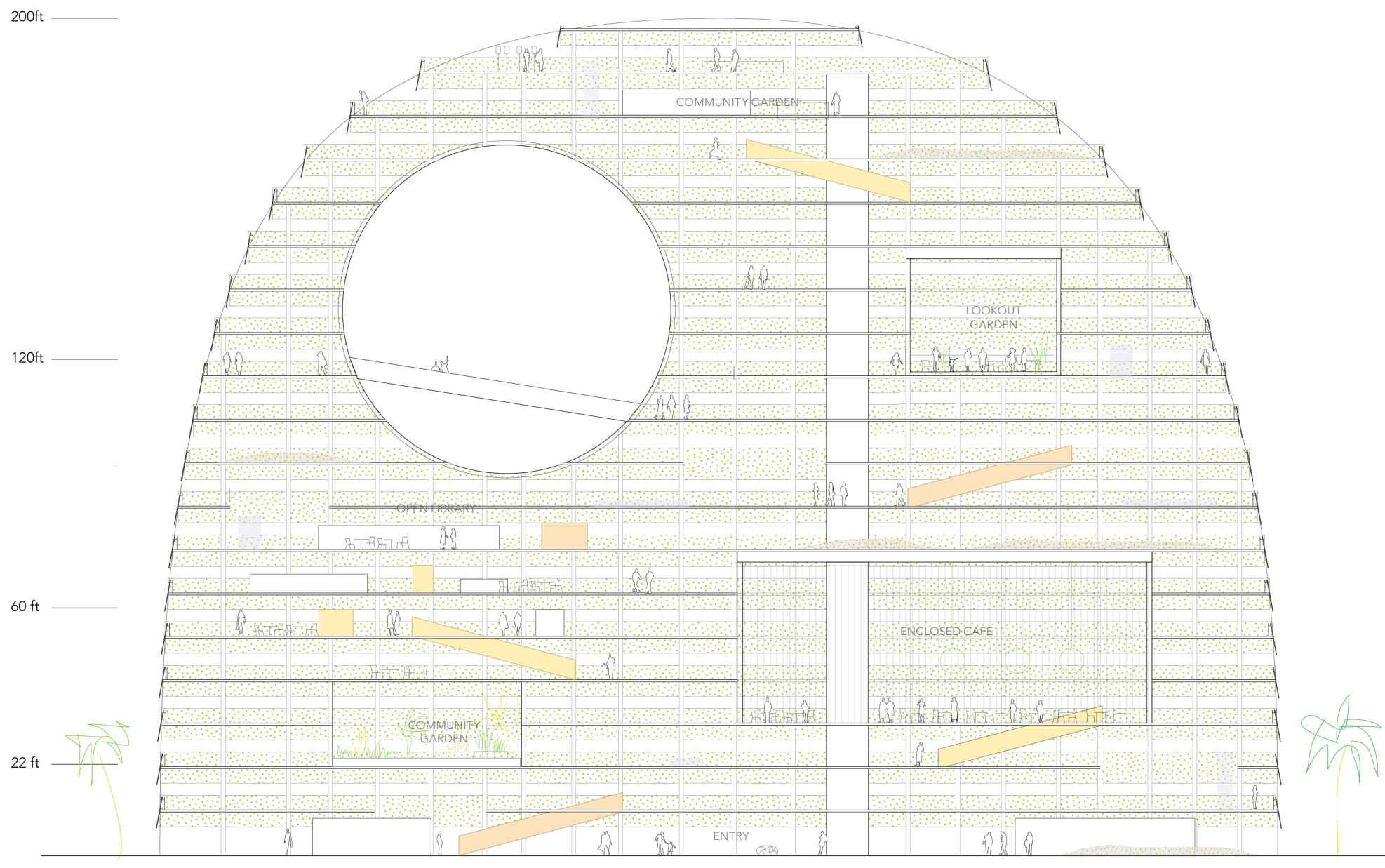
Echoing features of iconic natural rock formations, the soft profile of this artificial inselberg reshapes the horizon to create unique and defining icon for San Jose and Silicon Valley – a mountain-like terrain who's memorable profile becomes a defining feature of the skyline.

3.

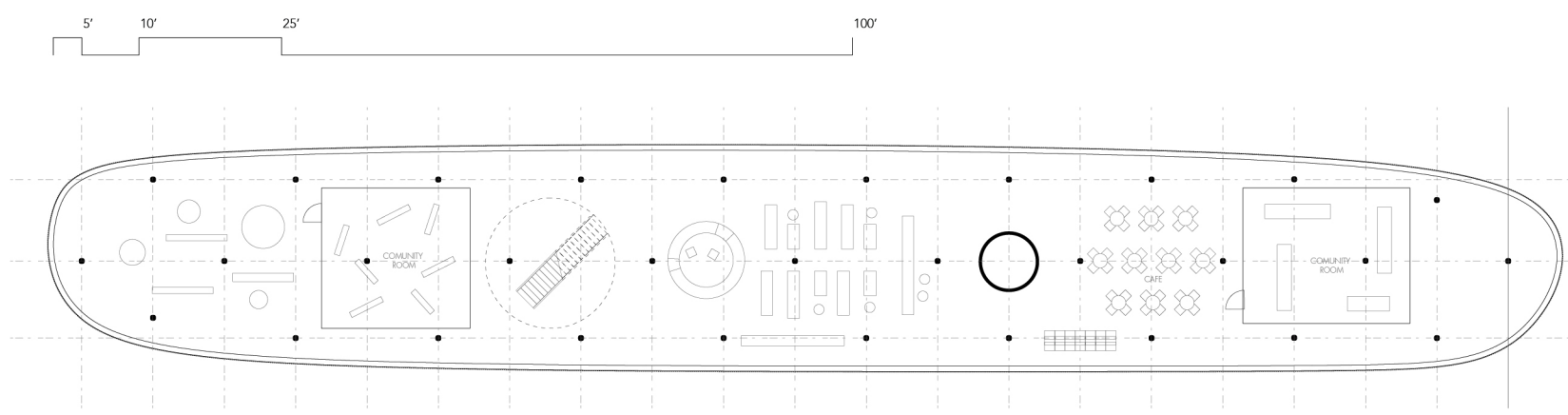
Overlook Hill invites people to climb to reach its summit, explore its "trails", and enjoy the view on its many lookouts. Interspersed within, multiple cultural and community programs (a cafe, an open library, several gardens, etc) occupy its open frame, while a large circular cutout frames a dramatic elevated viewing bridge.

4.

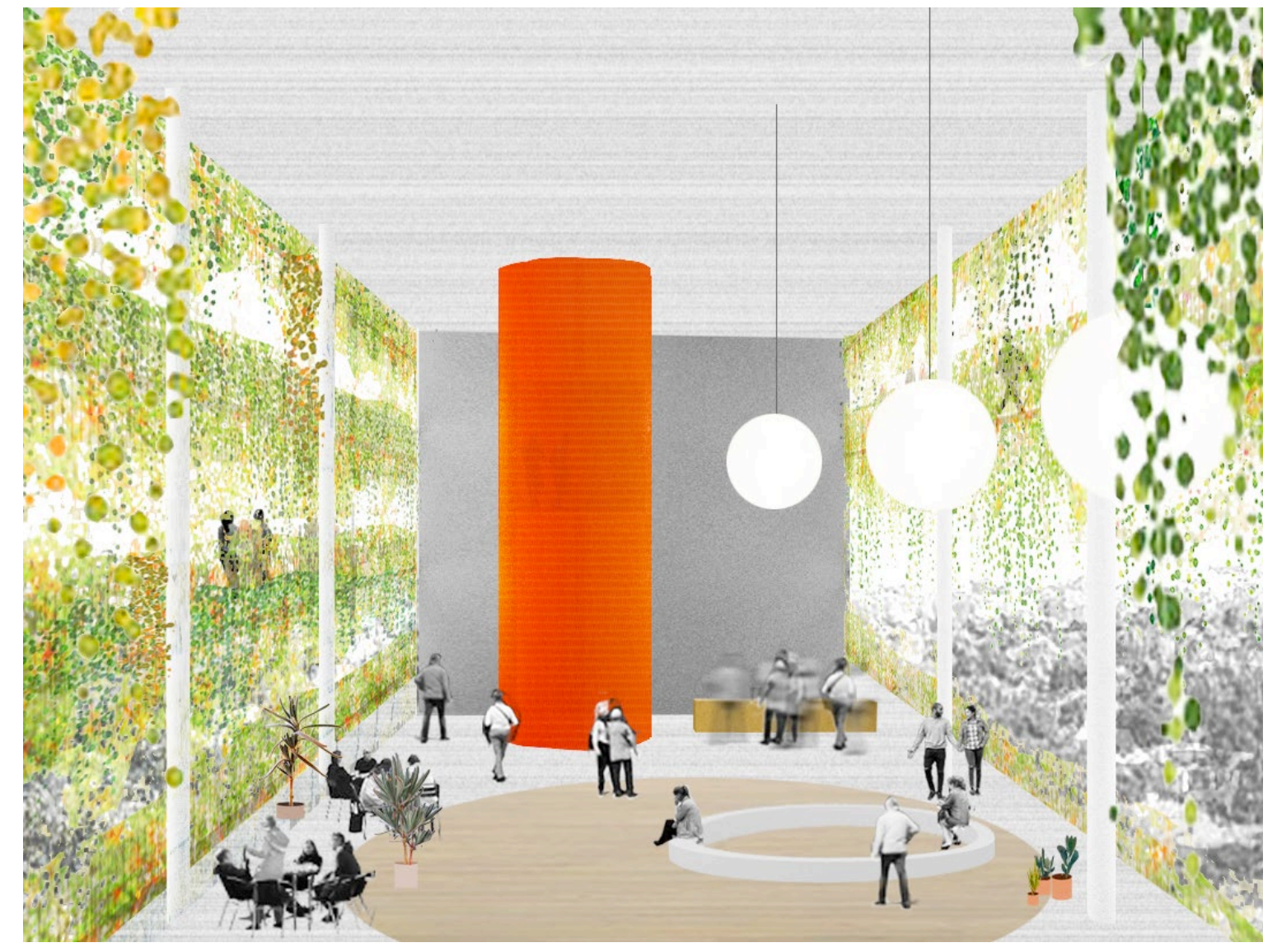
Accessible throughout with a network of elevators, ramps and interconnecting stairs, it offers a rich patchwork of experiences. Whether you are looking for a quiet picnic spot, in search of an unforgettable view, or organizing a community meeting, Overlook Hill will become the new point of urban confluence merging nature and city in one.



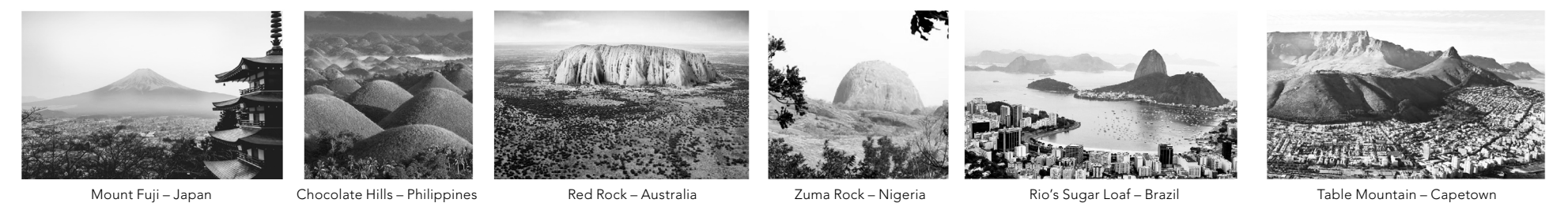
SECTION CUT THROUGH OVERLOOK HILL



GROUND PLAN



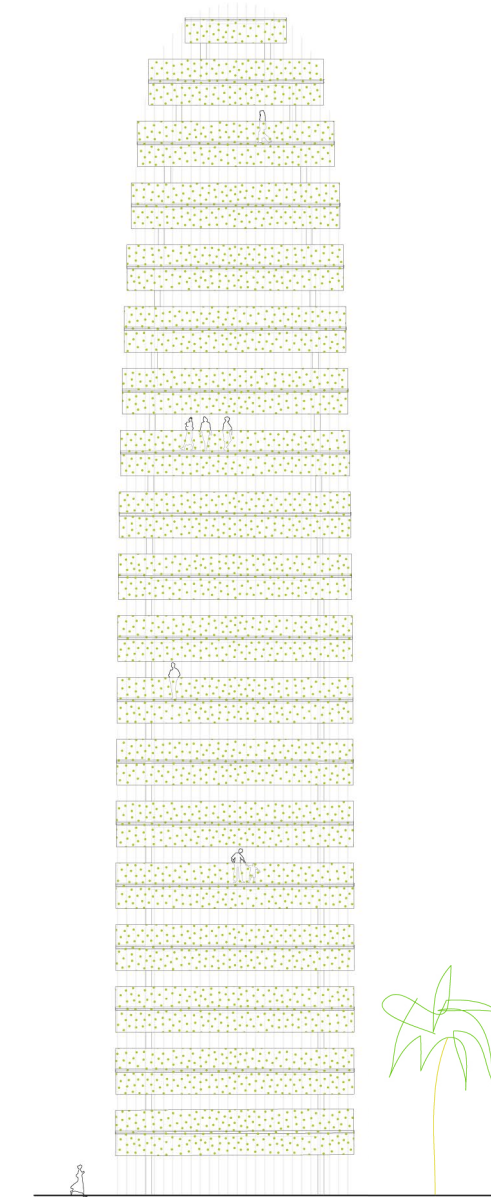
VIEW OF CAFE SPACE WITHIN



INSELBURGS AND NATURAL FORMATIONS AS LANDMARKS



INSIDE VIEW TOWARDS CITY



SIDE ELEVATION



ENLARGED CROSS-SECTION



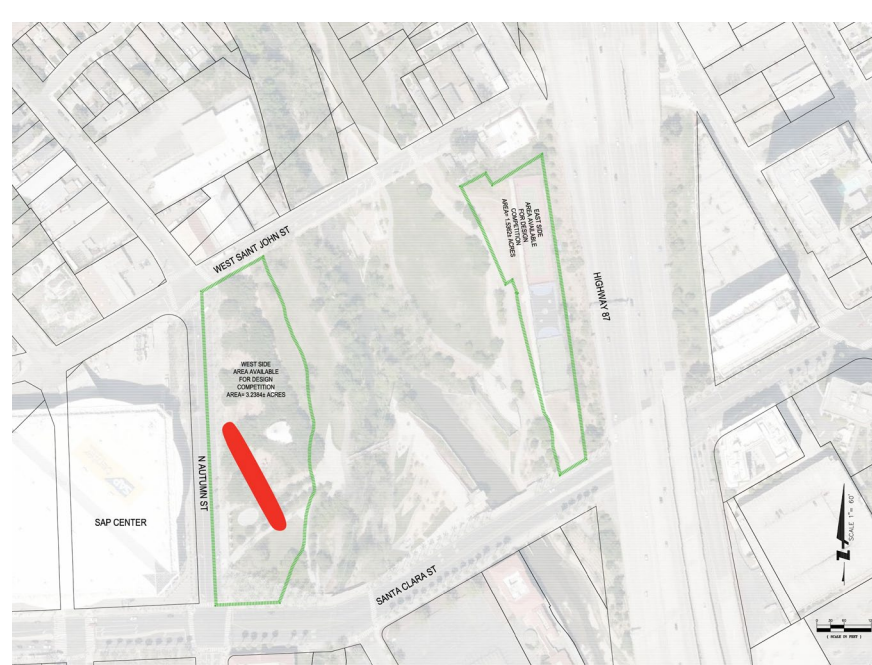
FLOWERING & PLANTING CHANGE THROUGHOUT THE YEAR

A SYMBOL OF THE REGION

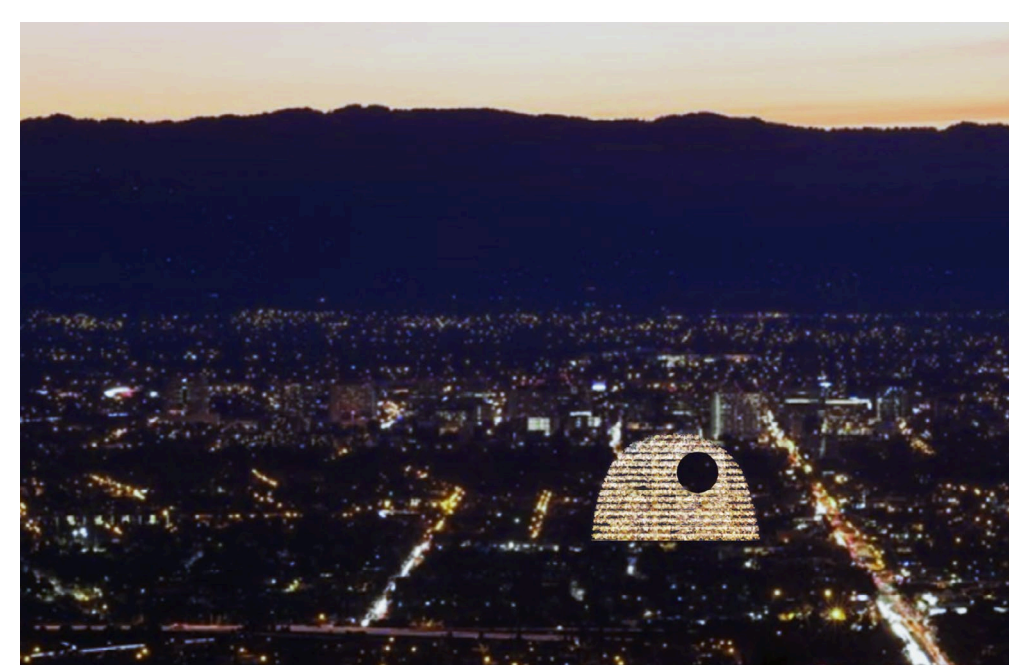
Silicon Valley's culture of innovation embraces continuous change and evolution. Overlook Hill embodies this ethos. Designed for continual transformation, its vegetation is planted with different flowering and growth seasons that changes its appearance throughout the year. Inside, spaces are reconfigurable to accommodate changing community uses and preferences over time. Overlook Hill becomes a physical symbol celebrating the dynamic nature of the region – an ever changing ecosystem offering a panoply of experiences for the community and those who visit.



VIEW DOWN SANTA CLARA ST.



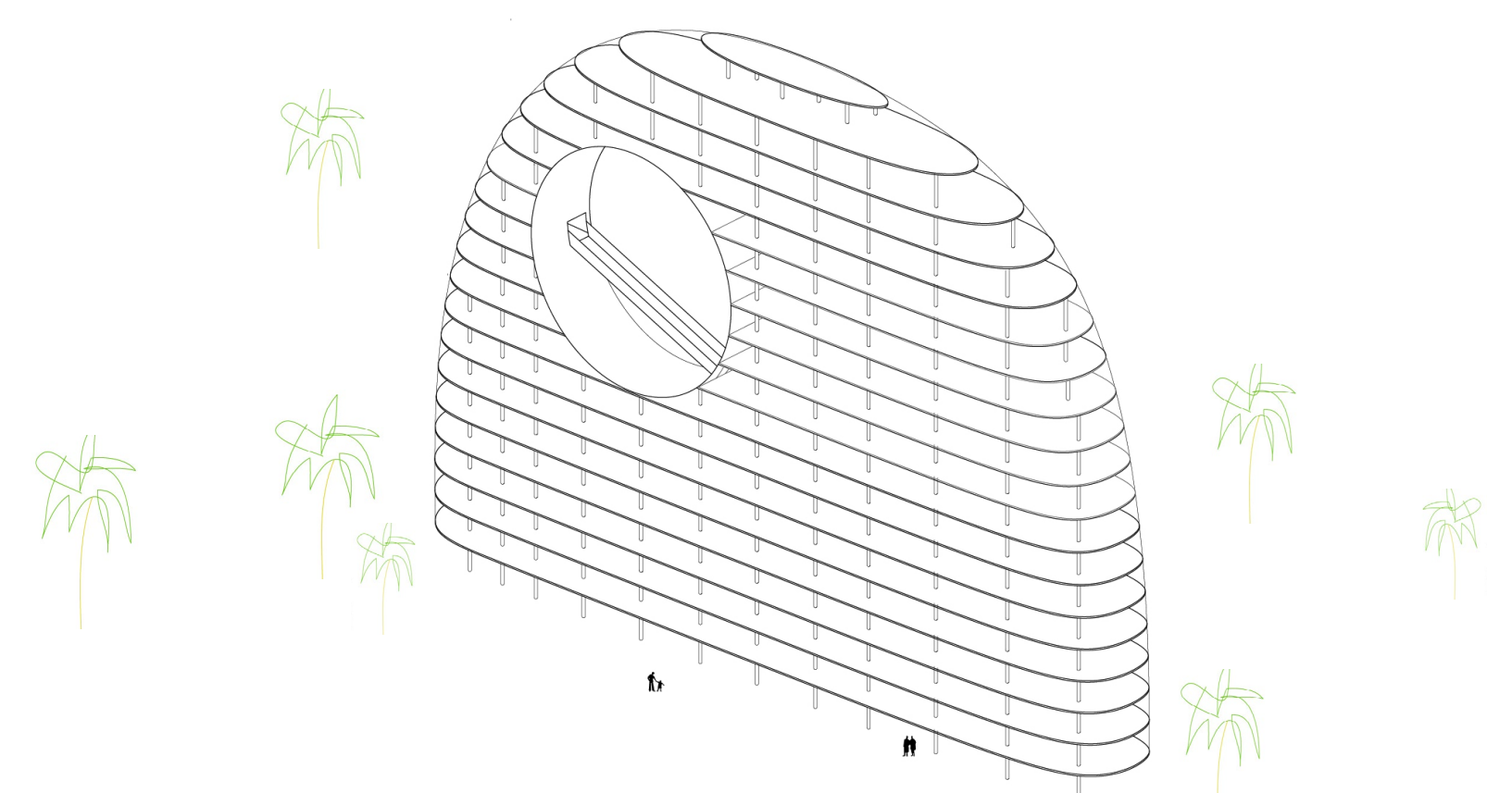
OFFICIAL SITE MAP IMAGE



OVERLOOK HILL LIGHTING AT NIGHT

CHANGING IN THE LIGHT

During the day, Overlook Hill's open frame transforms from solid to transparent in the changing sun. At night, lighting from within projects its recognizable figure against the night sky with its circular viewing frame inscribing an illuminated orb. Lighting is minimized to limit impact to nature below and the overall lighting strategy is calibrated in conversation with the environmental needs of the site.



AXON VIEW
OPEN AIR PLATFORMS SHAPE AN ARTIFICIAL HILL AND HANGING GARDEN