

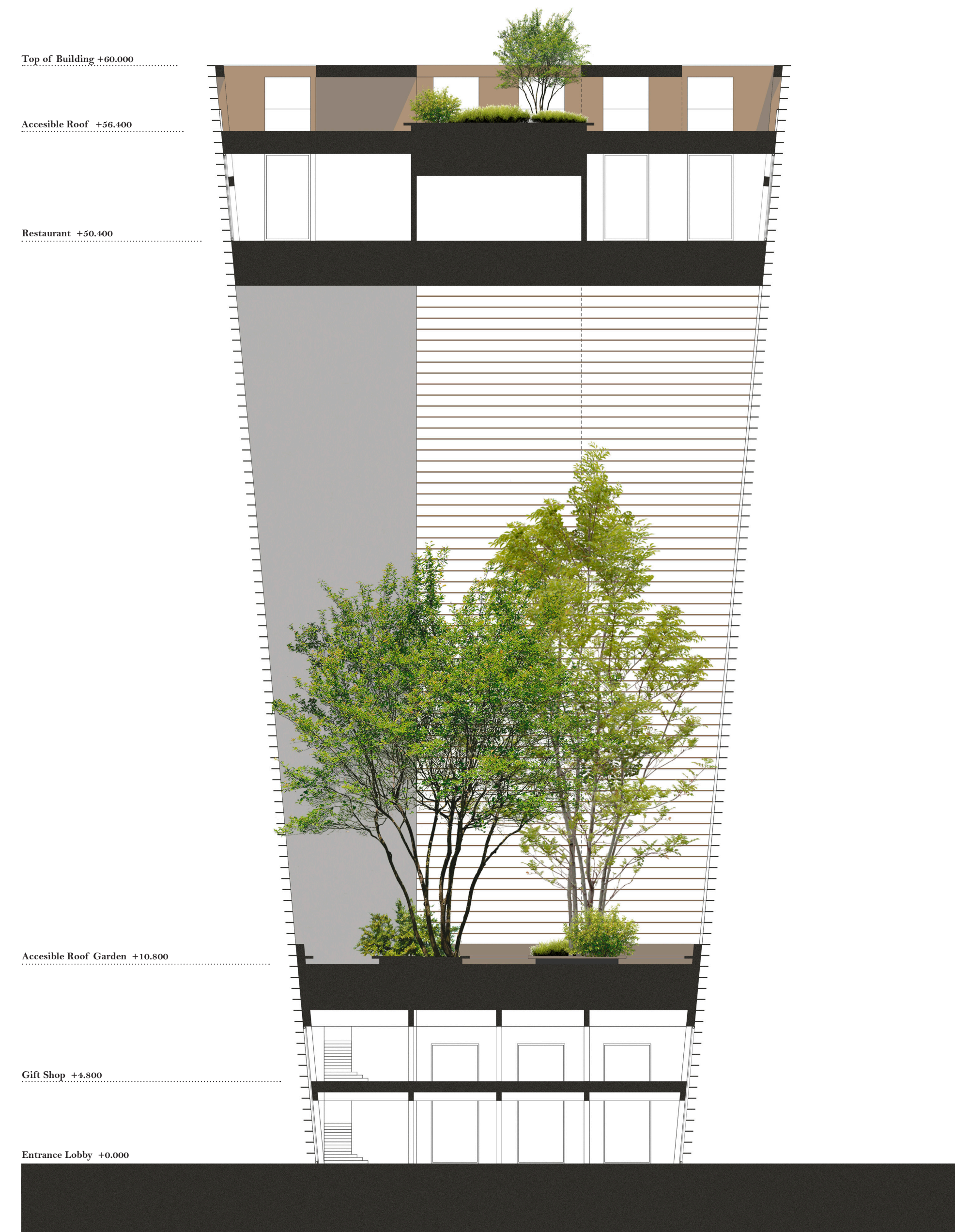


Night View

The tower setting offers an interactive place to the community. The different spaces within the project are proposed as public areas that can serve as meeting up points or spaces to enjoy the view of San Jose skyline.

Geometry and lighting strategy are designed to contribute to the idea of both iconic destination and culture of innovation. The inner backlit glass façade will provide an abstract and striking image that can relate with the digital culture of the area. The façade treatment with deep horizontal flat elements will create a more complex and contradictory perception of the building that will render it solid when being observed close and hollow when seen from the distance.

Lighting is conferred to the inner façade (backlit glass) providing a subtle light evenly distributed on a large scale. A toned down lantern building that becomes a beacon without disturbance for the nearby wildlife or air traffic



Vertical Section



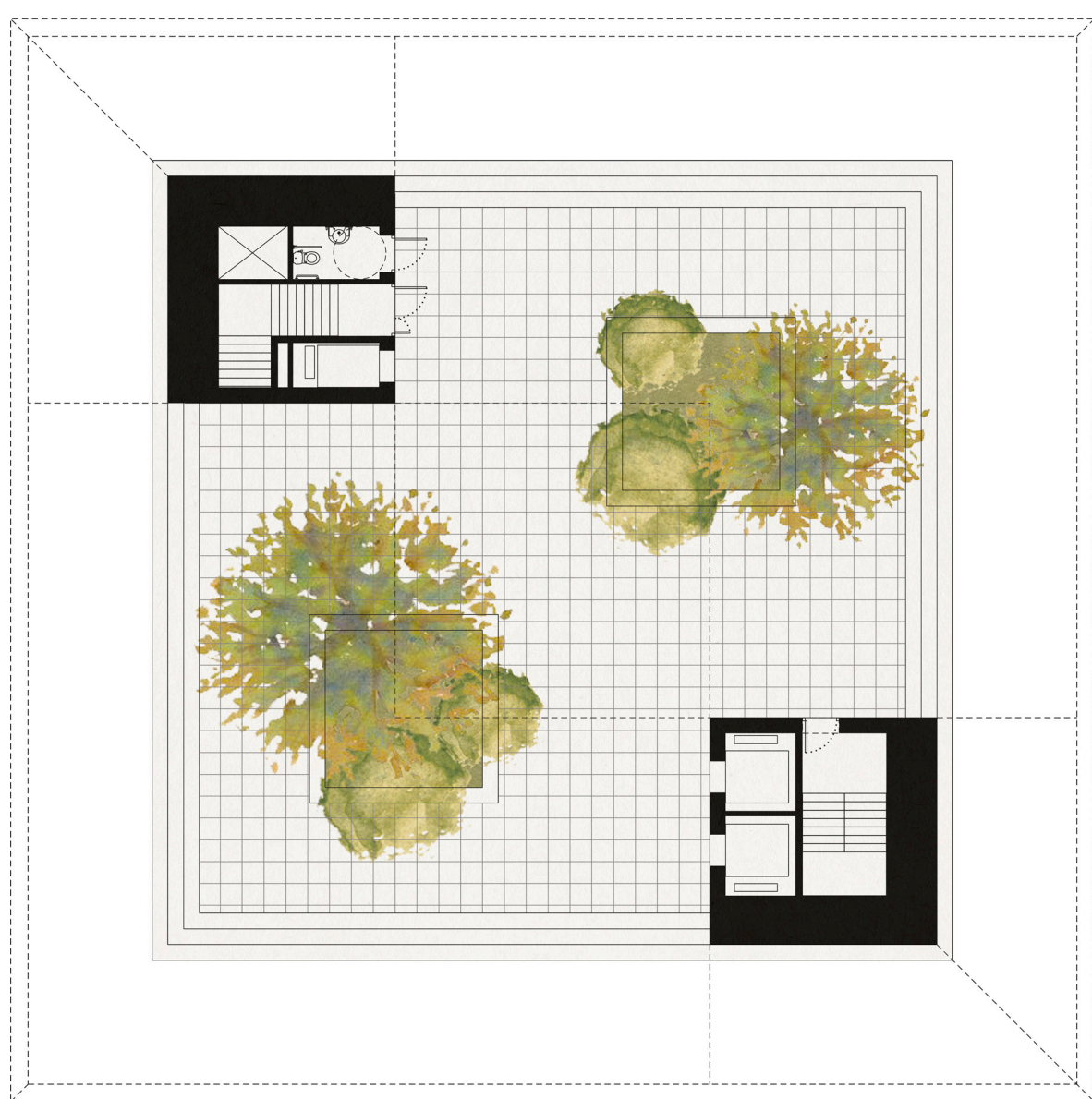
Site Plan

Construction materials like steel for the main structure and timber and glass for the façade provide a low CO2 footprint while offering the possibility of being recycled. Use of concrete, with high CO2 footprint, is minimized to the foundations. Horizontal timber louvres are suggested to avoid solar gains in summer time while roof gardens provide thermal insulation and biodiversity.

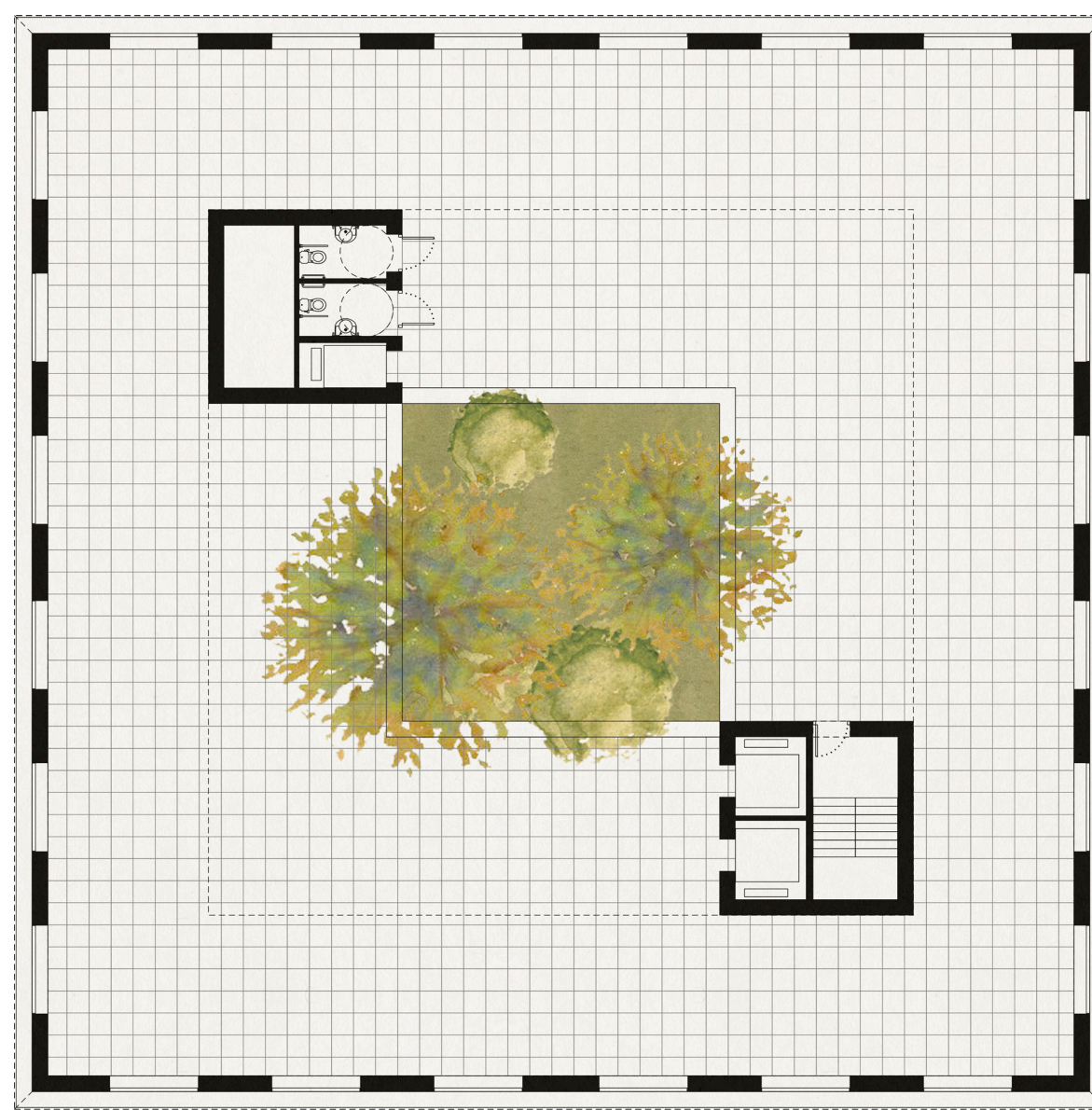
The tower footprint has been minimized to avoid existing greenery removal. The tower outer finish, related directly with the park, is proposed in timber to integrate it more naturally within the nearby environment. The proposed greenery on accessible roofs also contributes to the idea of integration.



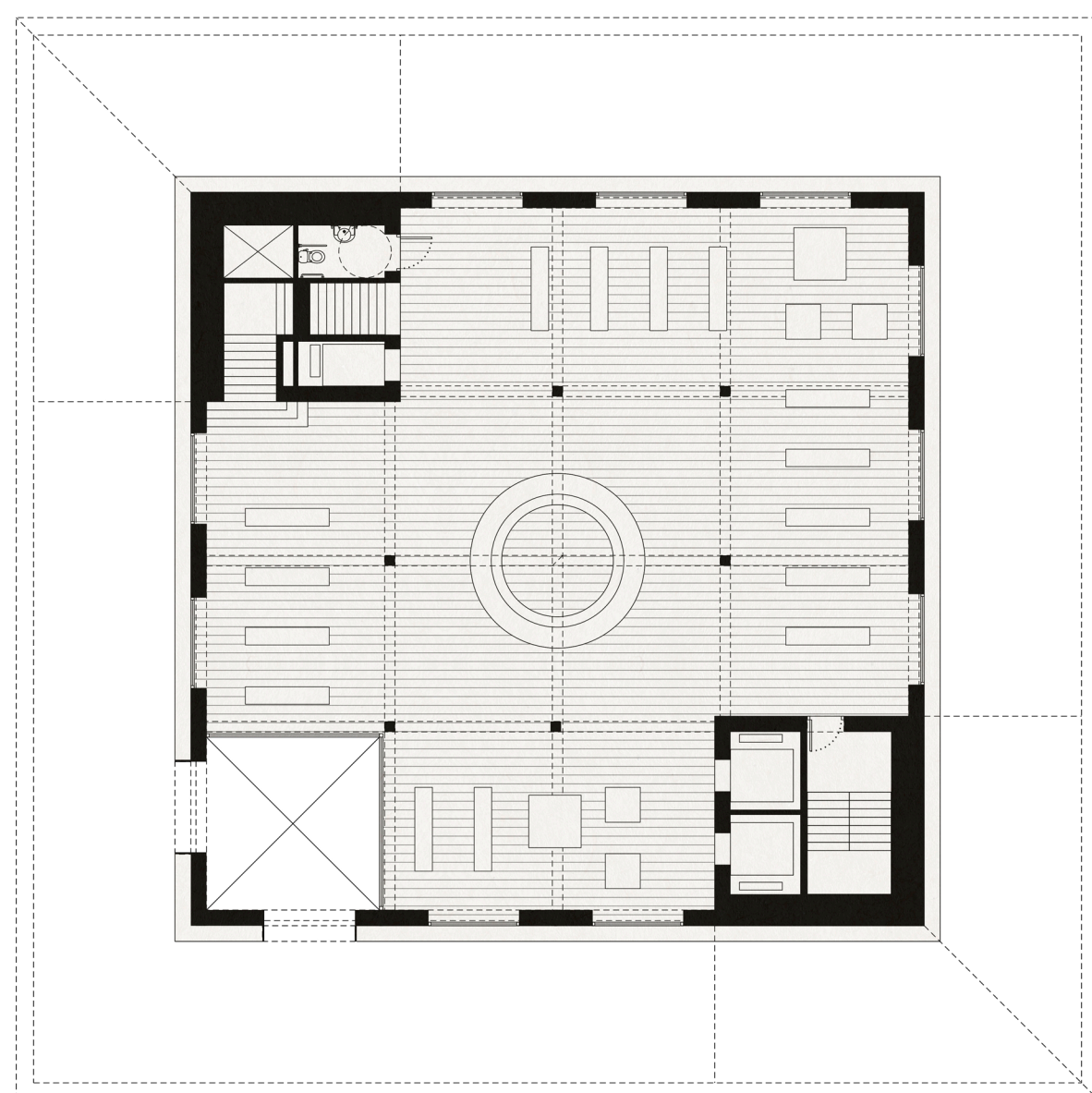
Sunset View



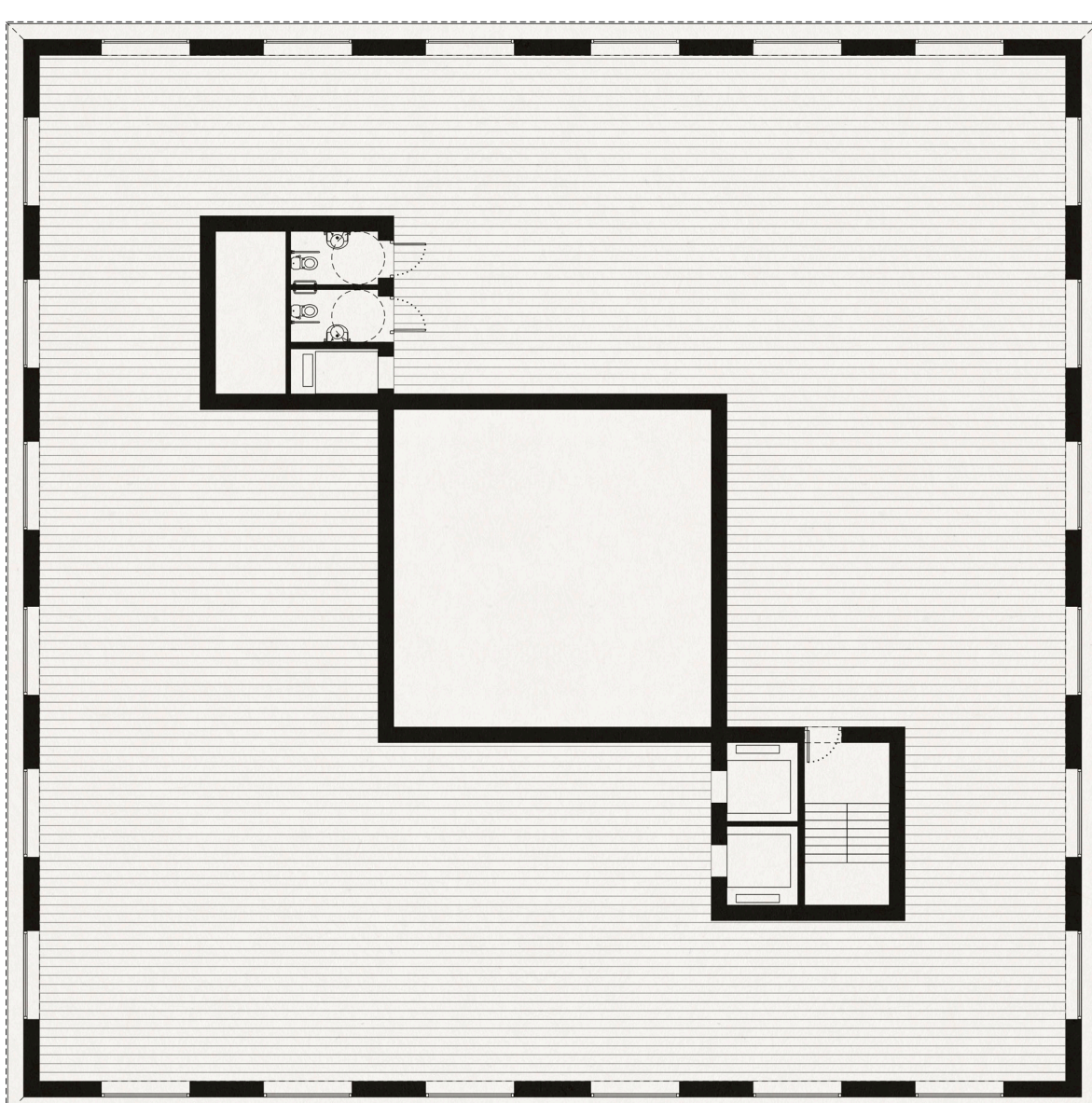
Accessible Roof Garden +10.800



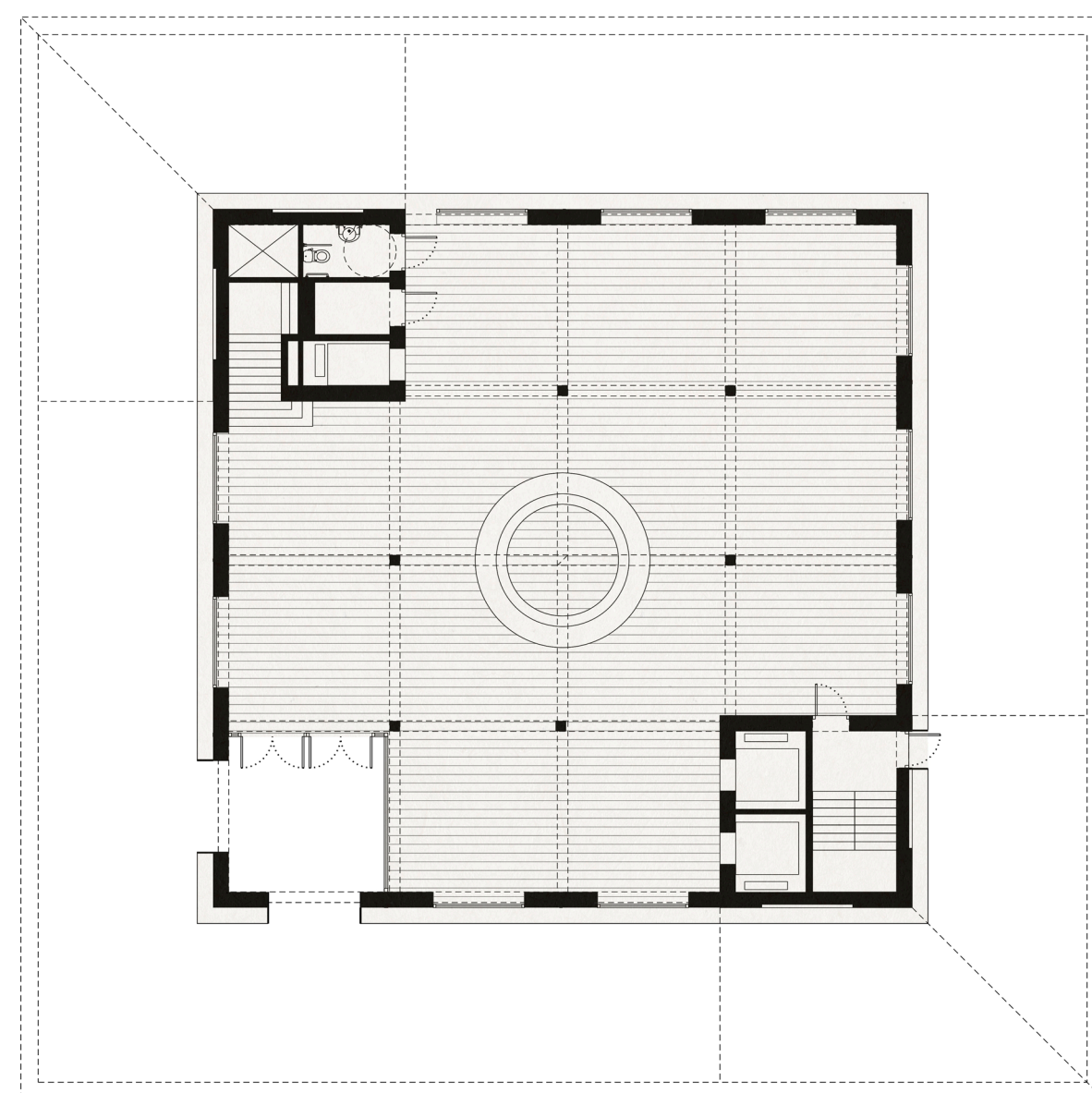
Accessible Roof +56.400



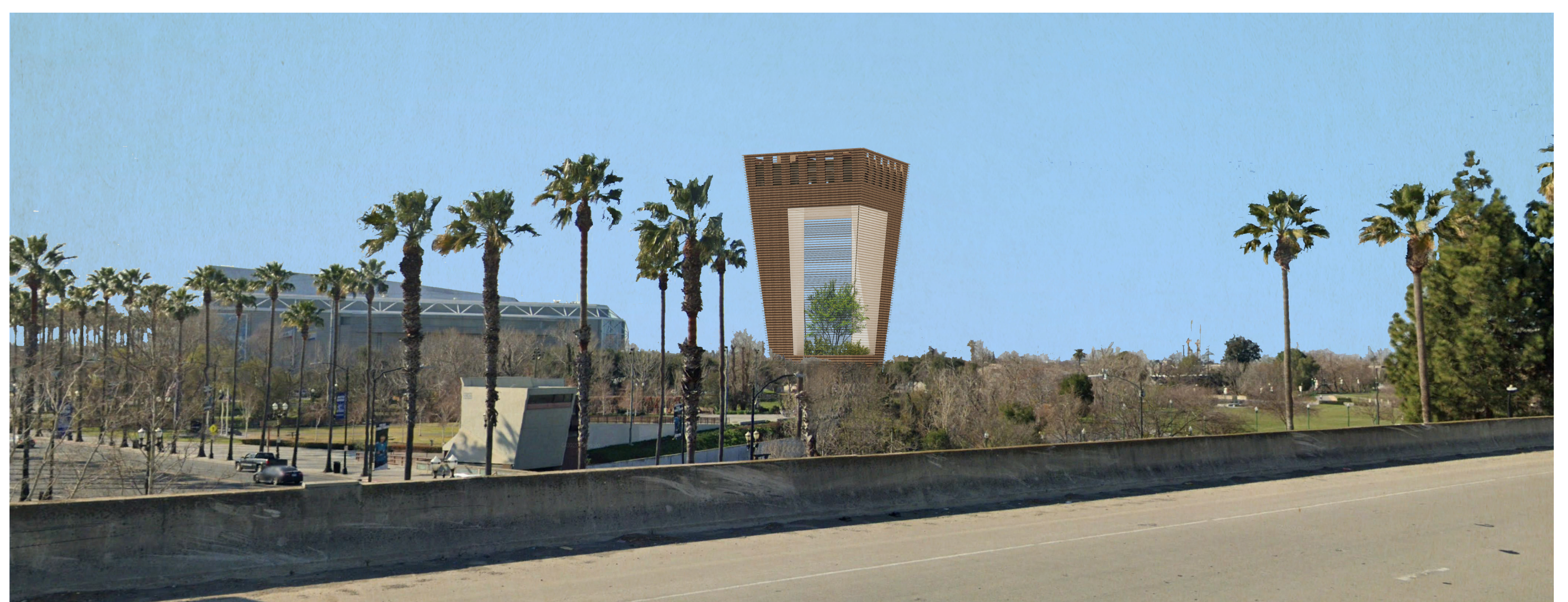
Gift Shop +4.800



Restaurant +50.400



Entrance Lobby +0.000



View from Motorway

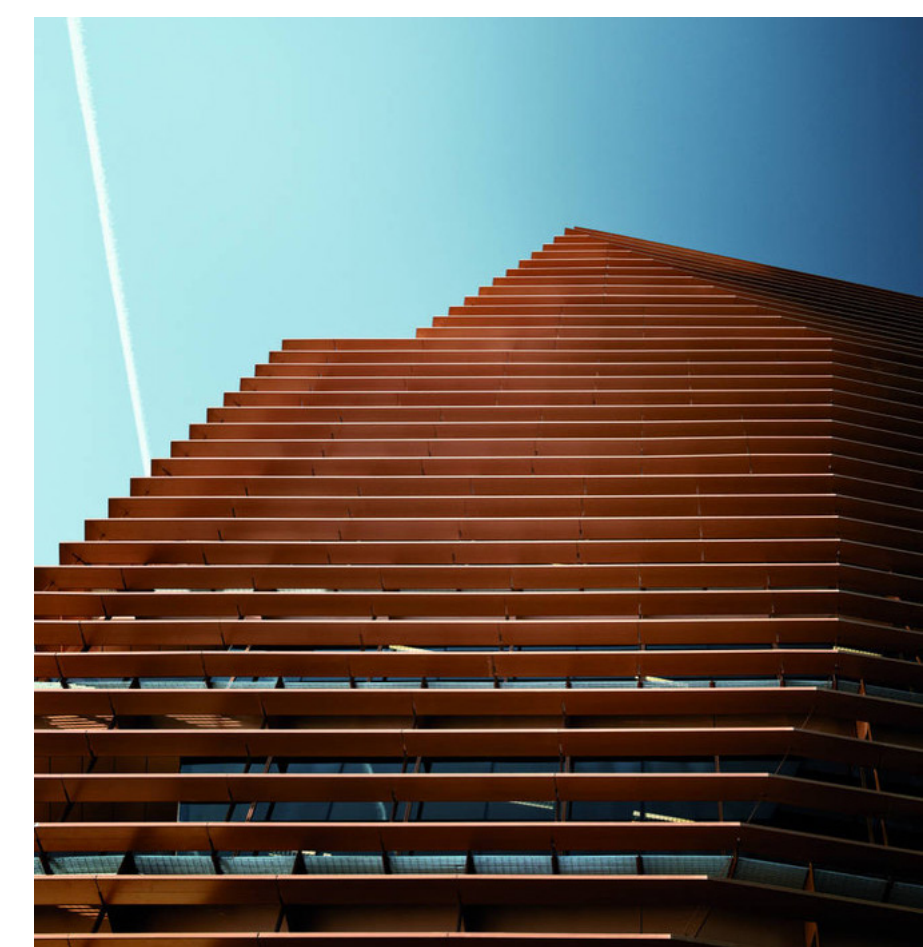
A unique sculptural geometry that will contribute to detach it from a more conventional perception of a building. A central part of the massing is subtracted creating a big opening that aims to make relate the building with a bigger urban scale. This massing strategy creates two contrasting façades. An outer one with a matt, dark and soft finish (timber cladding) and an inner one with a glossy, lighter and hard finish (opalescent backlit glass).

The façade treatment with deep horizontal flat elements will create a more complex and contradictory perception of the building that will render it solid when being observed close and hollow when seen from the distance.

The tower location away from surrounding building helps t perceive it in a more singular way

Reference Image

The Nelson-Atkins Museum of Art
Kansan City, Missouri, USA



Reference Image

Head Offices Of CMT
Barcelona, Spain

The tower location away from surrounding building helps t perceive it in a more singular way