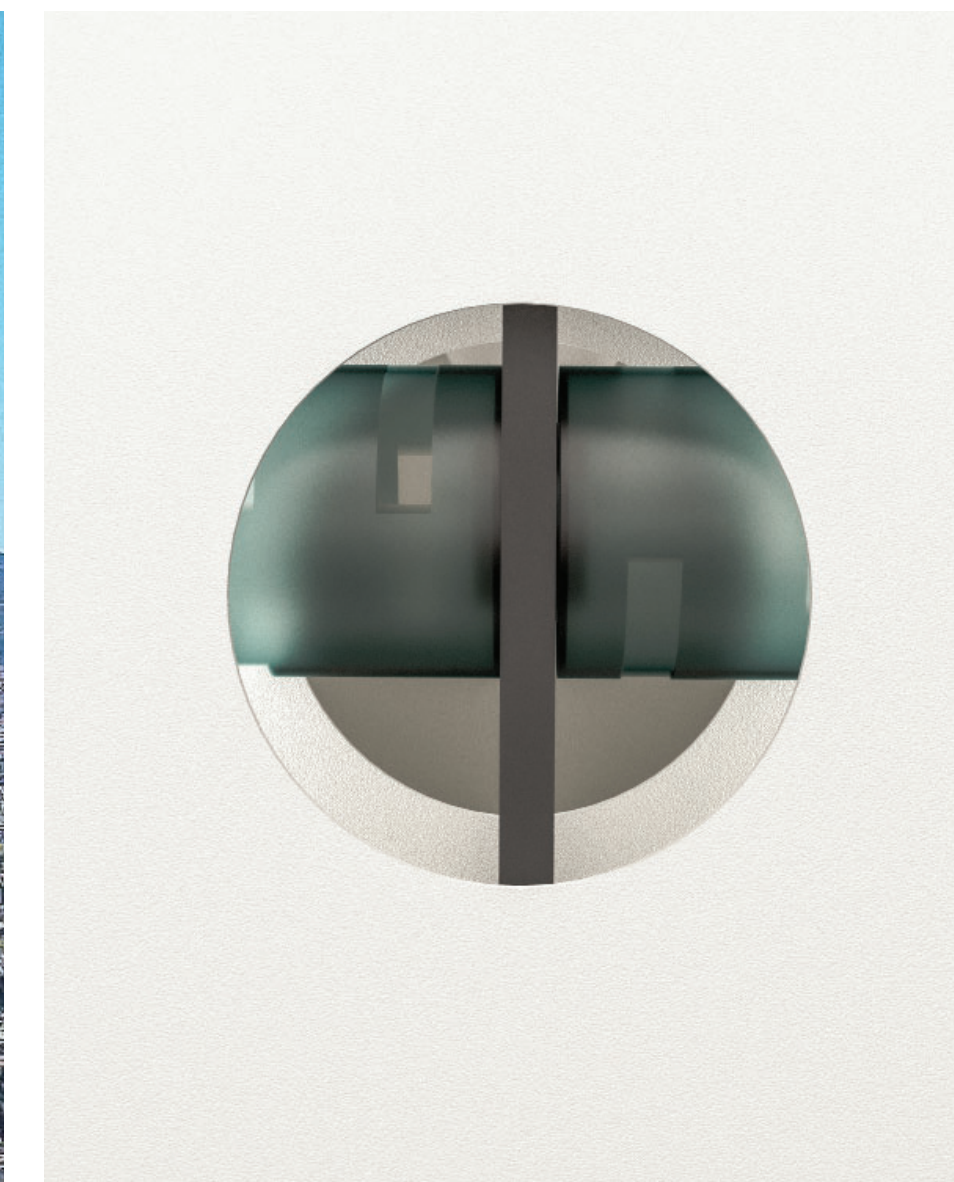


The World of Today

Anything spherical is a powerful architectural piece and are often disregarded unless built intended for a religious purpose like the dome of a Taj Mahal or The Pantheon. The World of Today was built upon the knowledge of the sphere significance globally including half spheres and what is intended to be as simple for the exterior will expose of its complexity and marvel engineering in the interior. The conceptual idea is analogous of Silicon Valley's reputation for being the global center for high technology and innovation. In any eye level perspective from a street the monument appears to be standing by itself but a pedestal is tucked well underneath it. There are 4 entrances of the pedestal that converges to a central space and one of the two keystones to be transported up from the elevator and the exit down from the stairs. There are punctures in both the interior and exterior shells to allow any passengers from the elevator or the stairs to "stick their heads in the interior void". The second keystone is on the top of the monument where there is a giant glass platform to look below at the world's biggest interior.



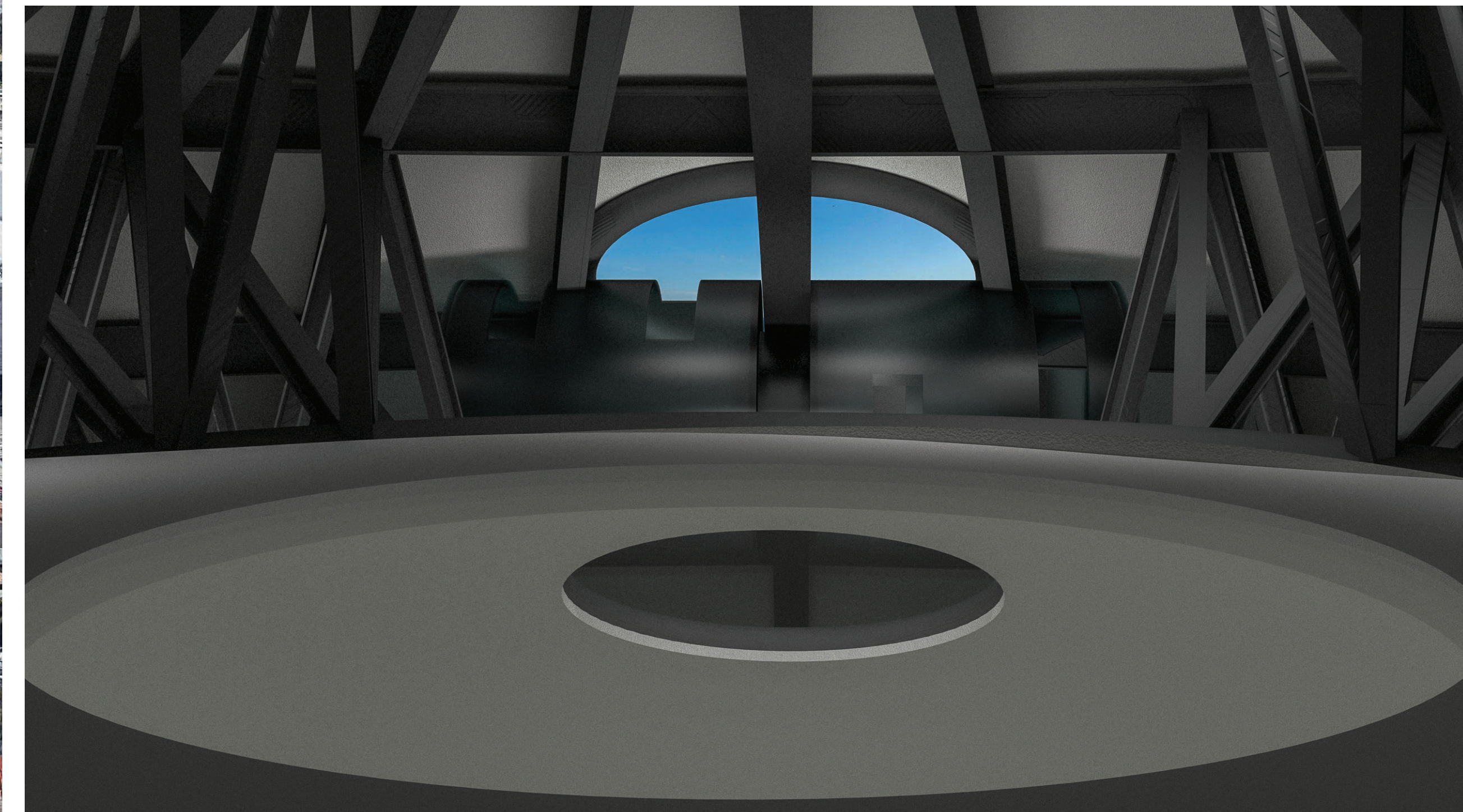
Part 1 - Piloting towards the World of Today



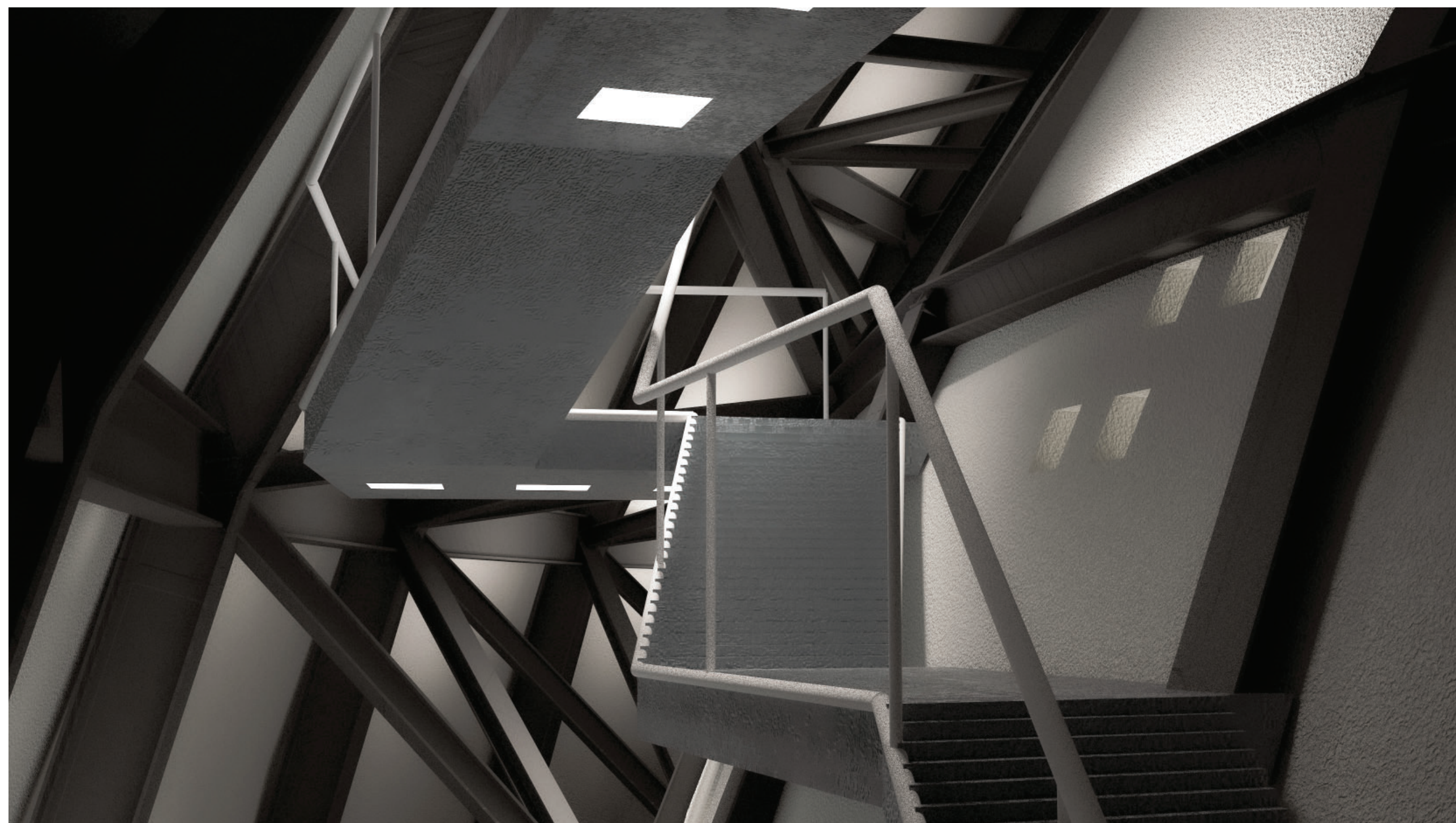
Part 2 - Looking through the pothole



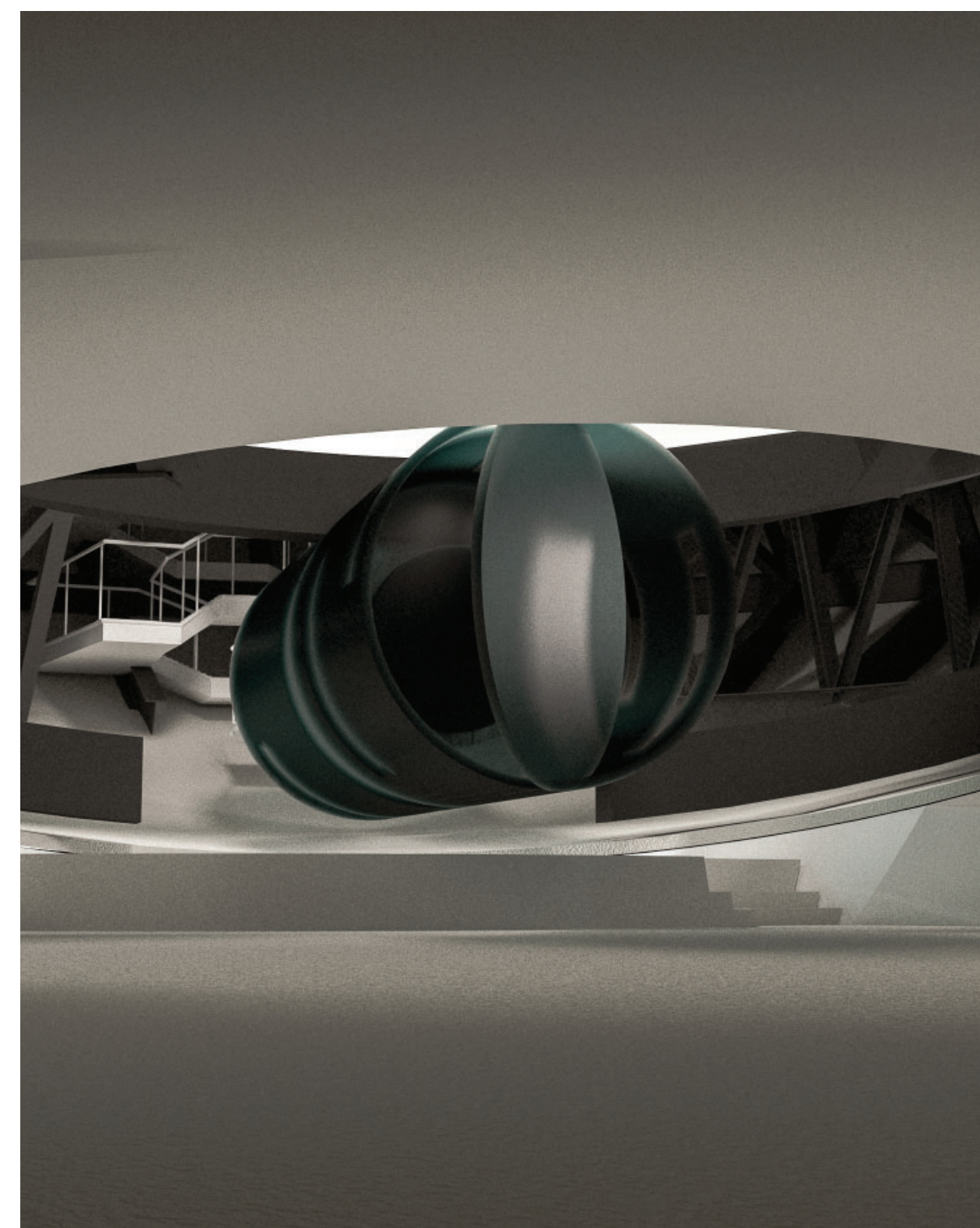
Part 3 - In the elevator looking in and down



Part 4 - Getting off the top glass keystone



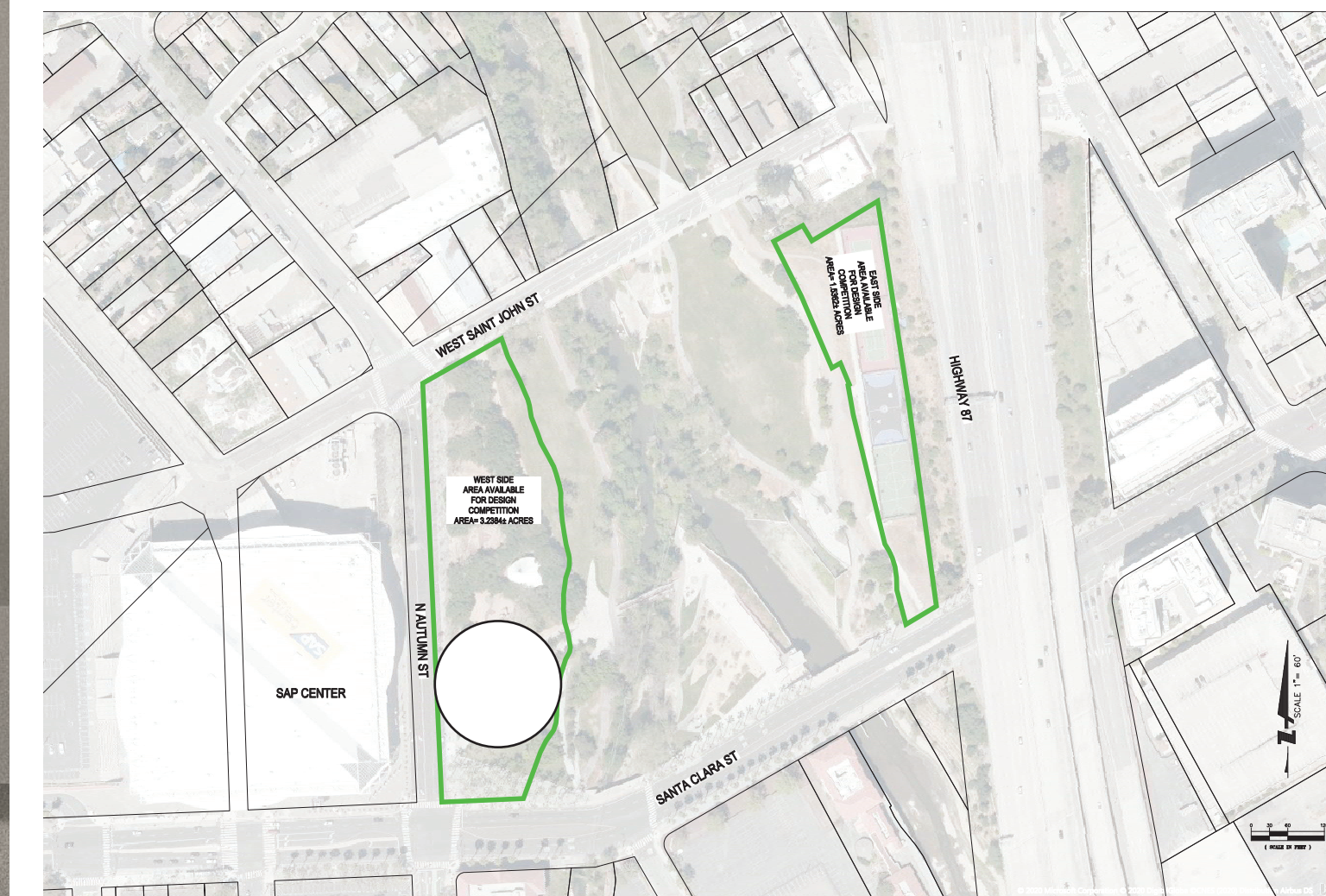
Part 5 - Walking down the stairs

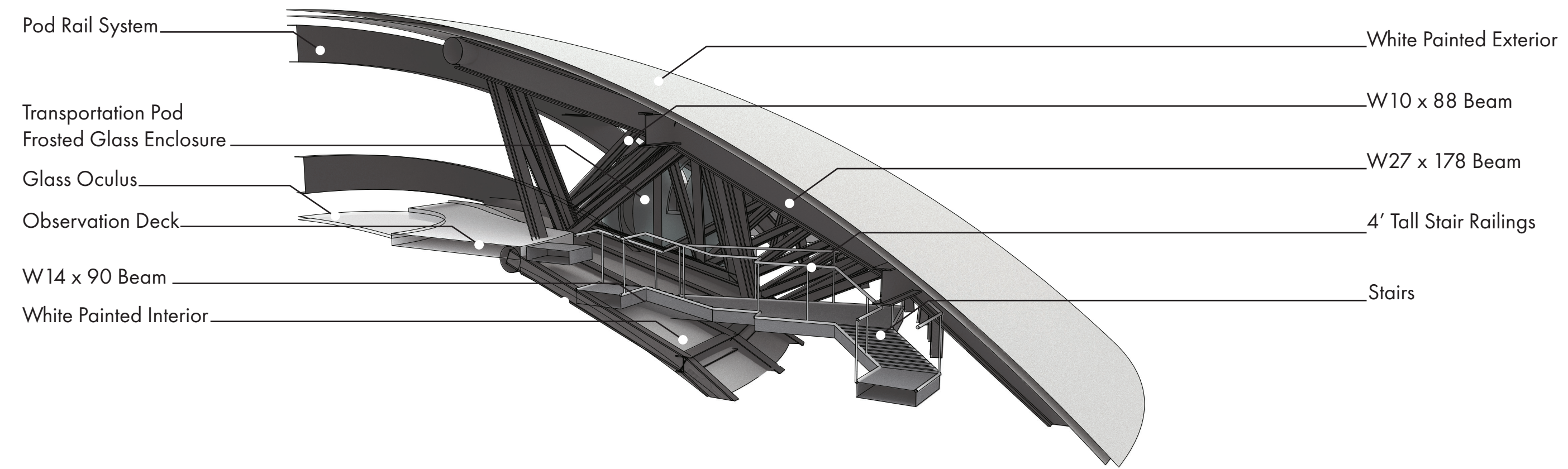


Part 6 - Reached the bottom keystone

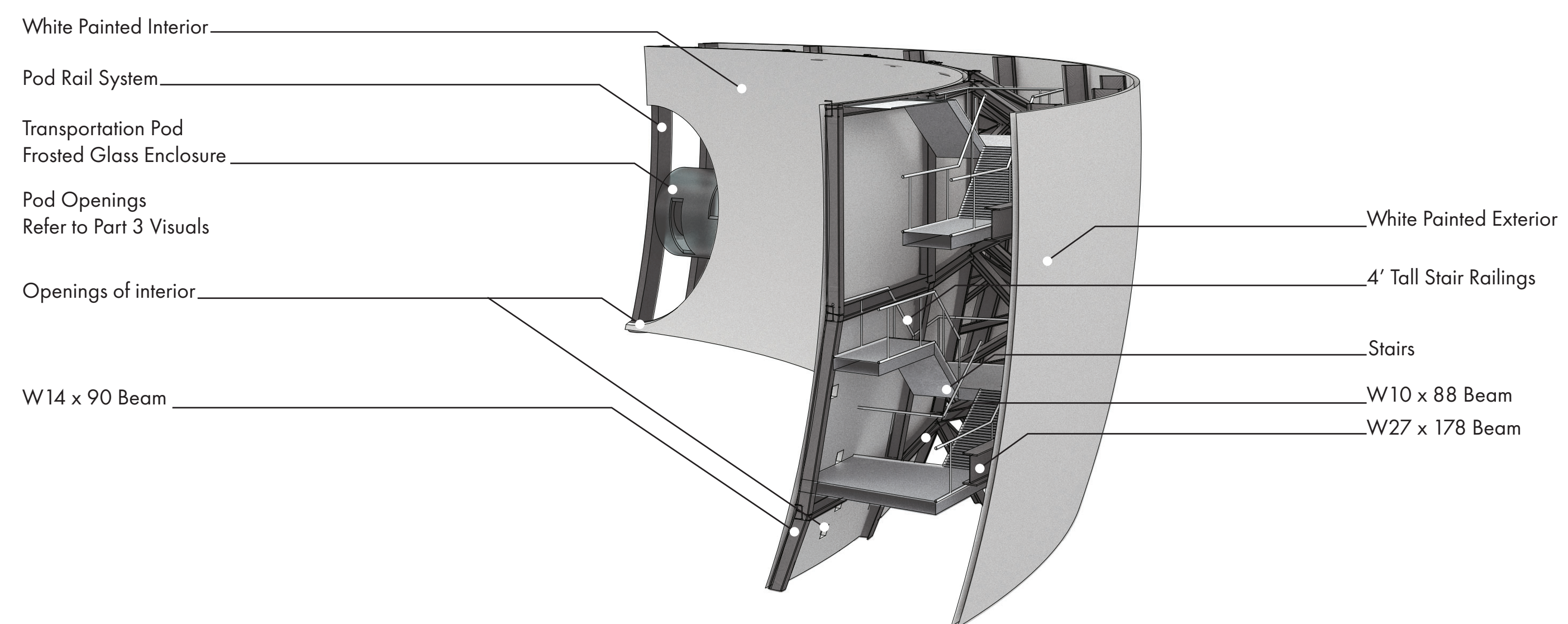


Part 7 - A nearby exit / entrance

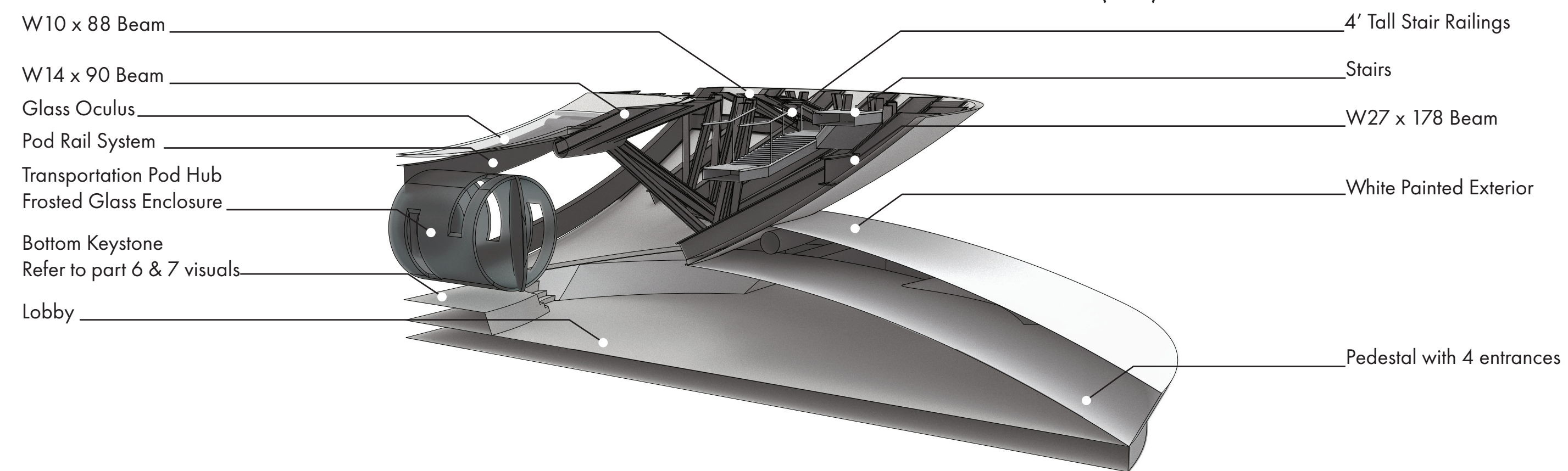




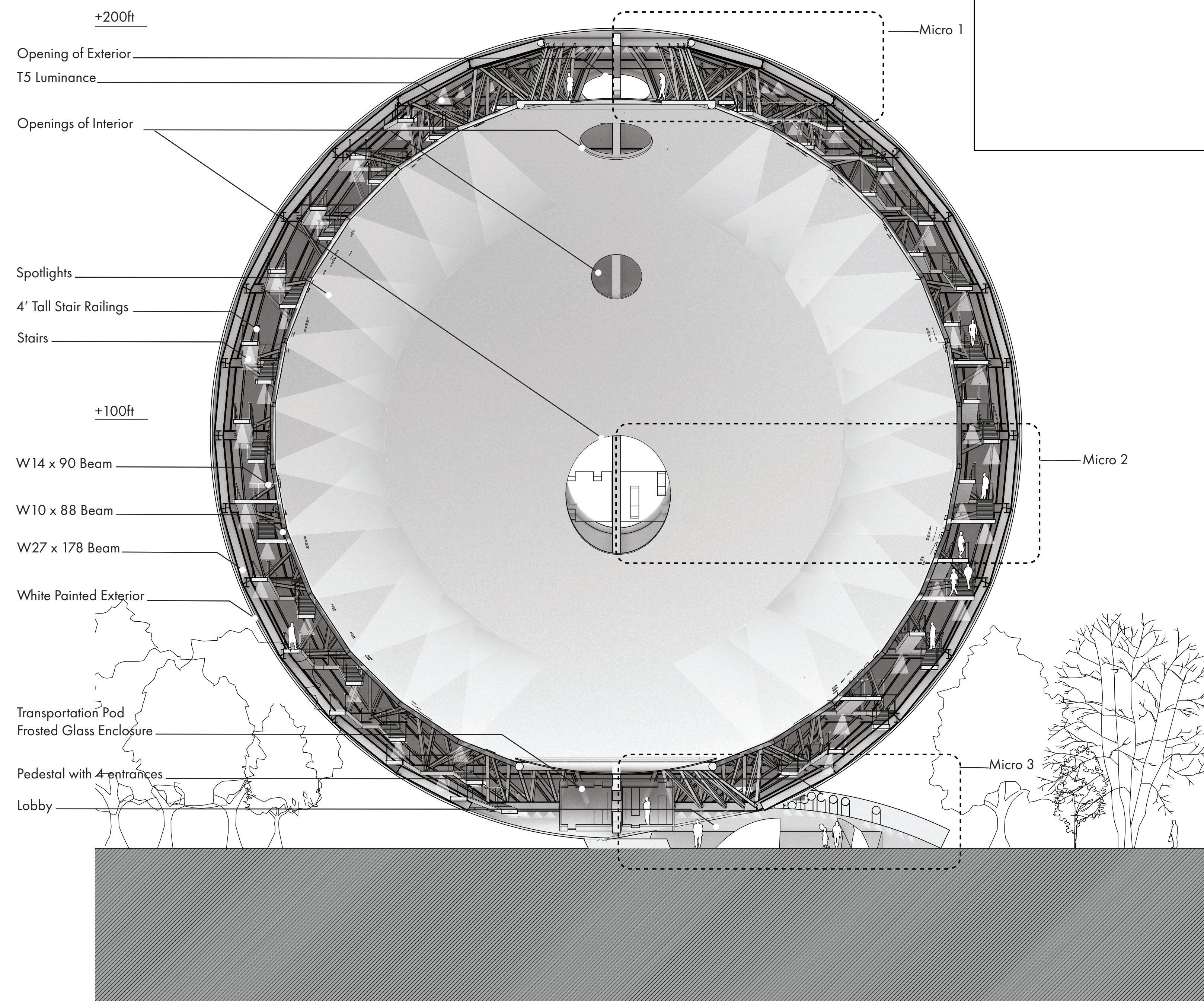
Micro 1 Isometric - (M1)



Micro 2 Isometric - (M2)



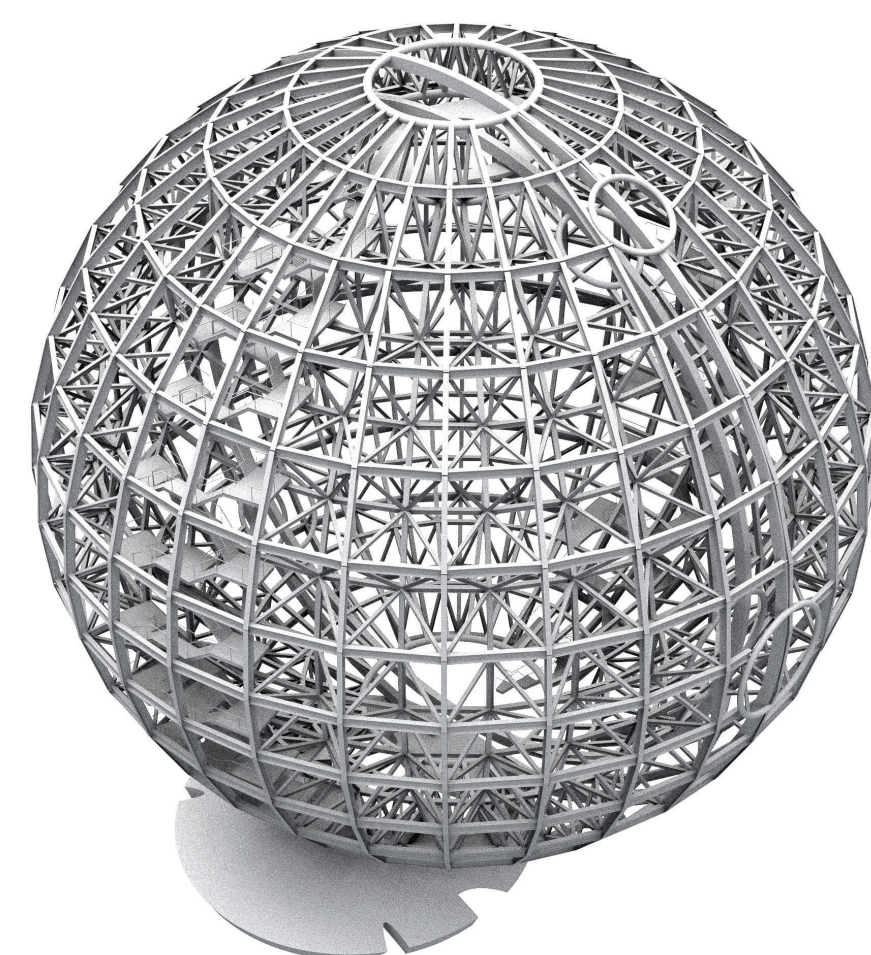
Micro 3 Isometric - (M3)



Longitudinal Section



Monument



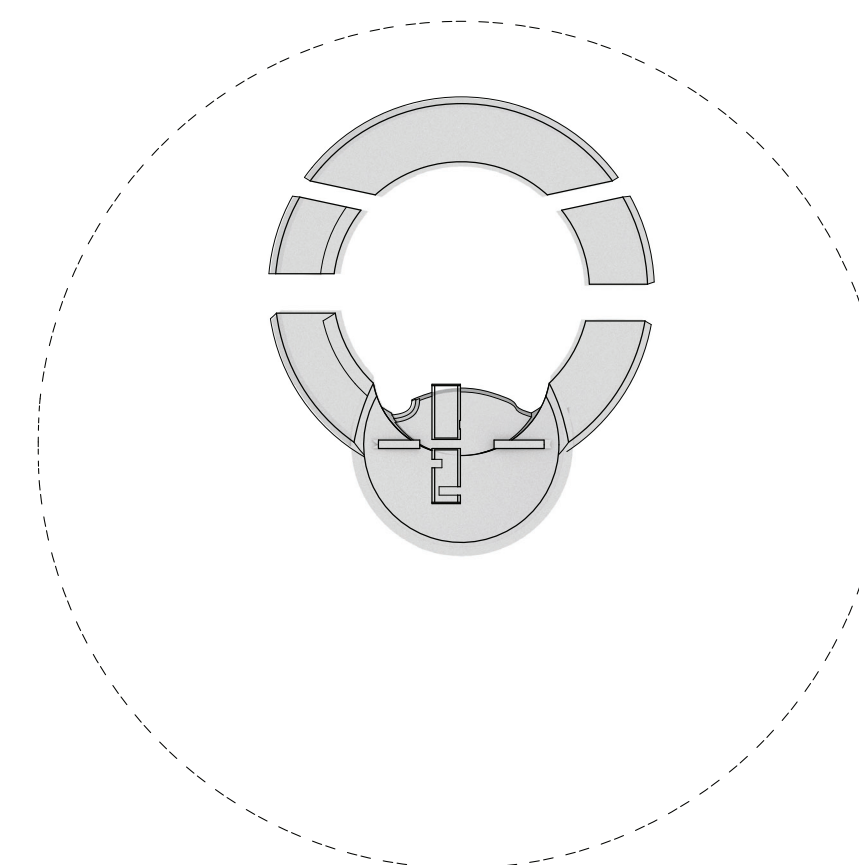
Structure System



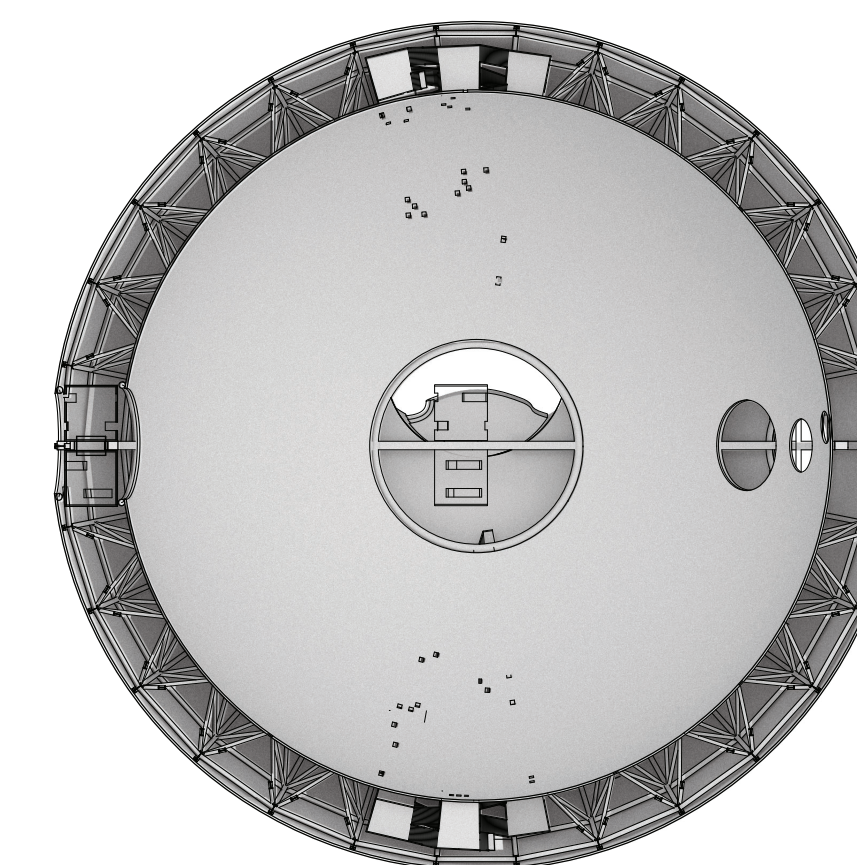
Elevator & Rail System



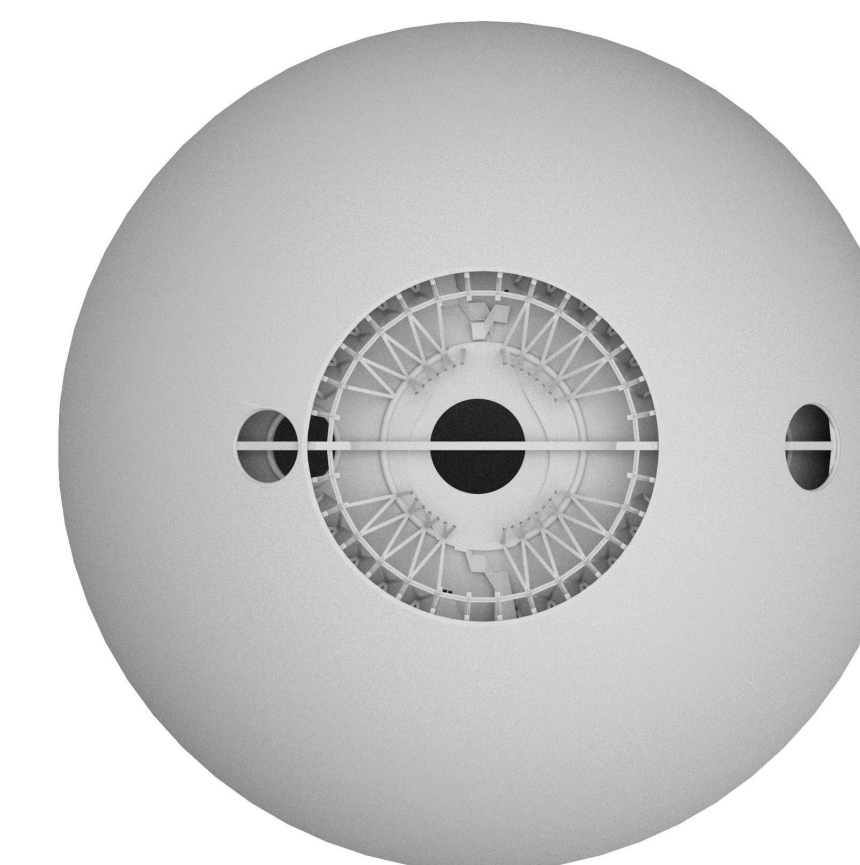
Stairs



Ground Floor Plan



5th Floor Plan



Top Floor