

Project Statment

Silicon Valley has earned its distinction as the epicenter of innovation and technology by continually making things possible that were previously deemed impossible. Inspired by this ingenuity, we are proud to introduce, "X Marks the Spot," a world-class landmark destined for Arena Green West.

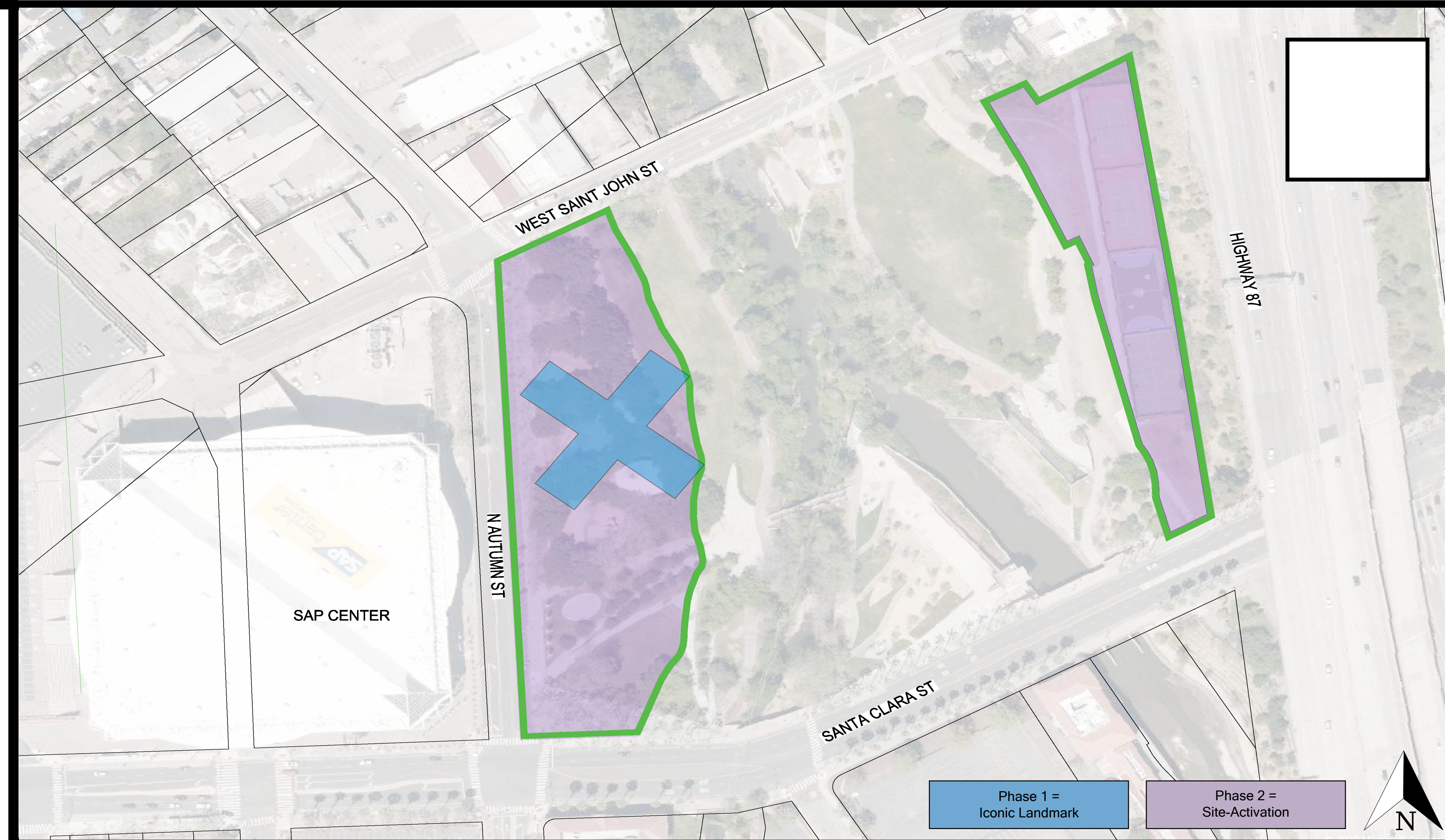
The X-shaped landmark is made entirely of glass and comprised of four wings that utilize an alternating vertical and horizontal glass beam core, in combination with an exterior glass skin, to provide strength to the transparent structure without using metal supports. This timeless marvel has a walkable rooftop observation deck that spans the wings and intersect in the center to form a glass skylight. Located below the skylight is a forest of vertical aeroponic gardens that are growing food for the community. These gardens can be reached by walking into any of the exhibition galleries within the wings that lead to the center of the structure.

Visitors can take a guided architectural tour; learn about Santa Clara Valley's agricultural history, as well as the food that is growing onsite; and experience the exhibition galleries that tell the stories of the people, businesses, and events that shaped Silicon Valley. At night, projection mapping transforms the glass into a brilliantly illuminated interactive display.

Sustainable, yet dynamic, technologies are integrated into the site-activated landmark, which harvests energy from the interactions it has with nature and humans. Visitors can track the credits they earn from the energy they produce interacting with the landmark, or walking on electricity-generating walkways throughout the park, by downloading the "X Marks the Spot" app. These credits can be exchanged for food and merchandise sold onsite at the farmers market, cafe, and gift shop.

A minimum of 1,325.90 kWh per day is required to operate the landmark. The technologies we selected produce enough energy to achieve net-zero with an additional reserve to activate and unite Arena Green West and Arena Green East.

With its timeless elegance, bold design, and transformative technologies, "X Marks the Spot" is a powerful and enduring icon that will attract visitors of all ages and abilities, residents and visitors alike. Bridging Silicon Valley's past to present and inspiring its future to continue redefining what is possible, the X-shaped landmark will signify this unique valley of possibility as the global center of innovation and human advancement.



Electricity generating walkways

Converts pedestrian footfall into off grid energy.

- Produces between 3-5 watts per step



Glass Skin

1" safety glass is laminated in layers with a trio of specialty film technologies:

- *Solar film*: generates electricity by collecting light energy from the sun
- *Piezoelectric film*: produces electricity from the mechanical force of visitors walking on the ramps and rooftop observation deck
- *Security window film system*: a robust shield against impact energy from earthquakes and forced entry

North-West Wing

50' wide x 100' long

- Houses Four Exhibition Galleries
- Each Exhibition Gallery is 12' H x 10' W x 100' L

Glass Core

1" safety glass is laminated in layers with a duo of specialty film technologies:

- *Solar film*: generates electricity by collecting light energy from the sun
- *Security window film system*: A robust shield against impact energy from earthquakes and forced entry

South-West Wing

50' wide x 100' long

- Houses Four Exhibition Galleries
- Each Exhibition Gallery is 12' H x 10' W x 100' L

Aeroponic Vertical Gardens

With each tower capable of growing 58 plants at a time, the 49 towers located here will have a harvest yield of over 2800 plants and vegetables per month.



North-East Wing

50' wide x 100' long

- Houses Four Exhibition Galleries
- Each Exhibition Gallery is 12' H x 10' W x 100' L

Rooftop Observation Deck

Walkable skylight spans the wings and intersects at the center

Glass Ramps

Cantilevered ADA accessible ramps

South-East Wing

50' wide x 100' long

- Houses Four Exhibition Galleries
- Each Exhibition Gallery is 12' H x 10' W x 100' L

Dimensions

14' tall x 250' wide x 250' long
Footprint = ~1.438 acres

Projection Mapping

At night, Projection Mapping transforms the glass into a brilliantly interactive display.

X MARKS THE SPOT