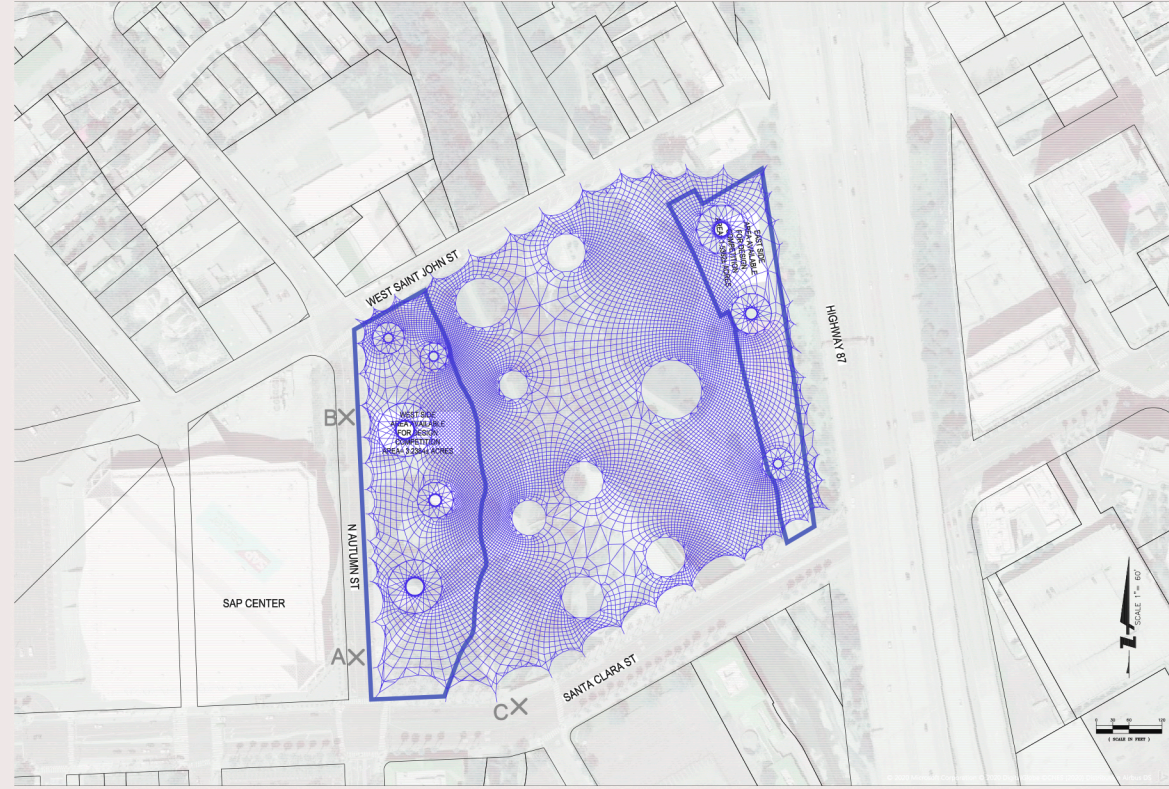


PERSPECTIVE A

The project consists of several sets of strategic flexible interwoven carbon fiber poles raising a mesh of catenary crossed over supports all over the site, according to the principal stress directions. The intention is to generate a symbol for the city, capable of being remembered for all ages. The space is covered with a dichroic and translucent material, capable of varying its color across the entire visible spectrum of the rainbow depending on the radiation, lighting and perspective of the visitor. An icon awaits!



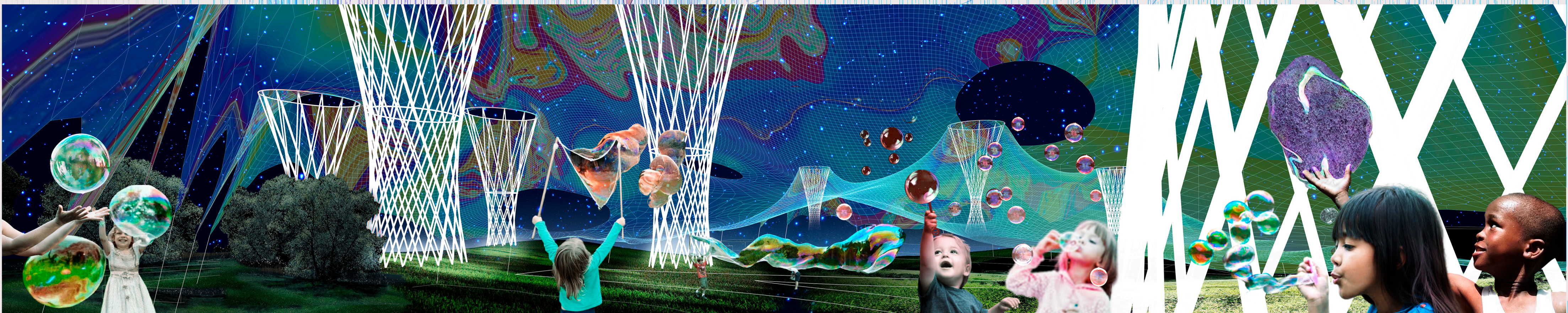
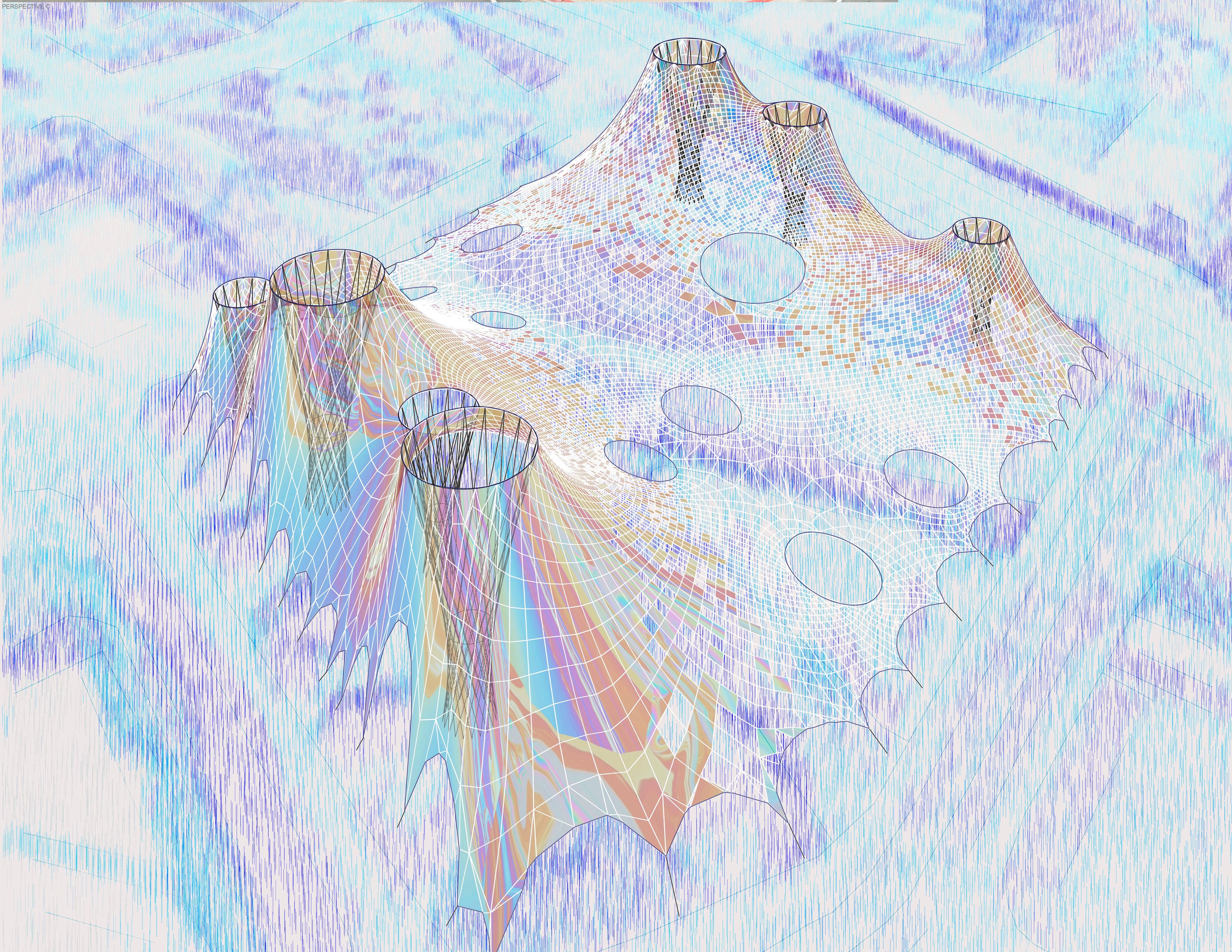
PERSPECTIVE B



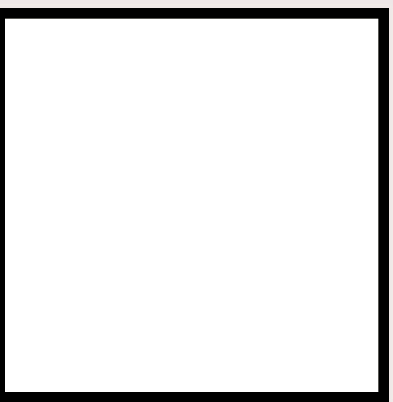
SITE PLAN



PERSPECTIVE C







The value of this project lies in its flexibility, due to the design process, based on volatile parameters. In this way, the structural flowers can be placed in different points, and the stretched mesh can be adjusted to different topologies. It is important to note that the entire process is geometrically optimized based on the main and secondary stress lines.

The following diagrams show three possible strategies for colonising the site. From the most restrictive to the recommended project area to the most iconic

