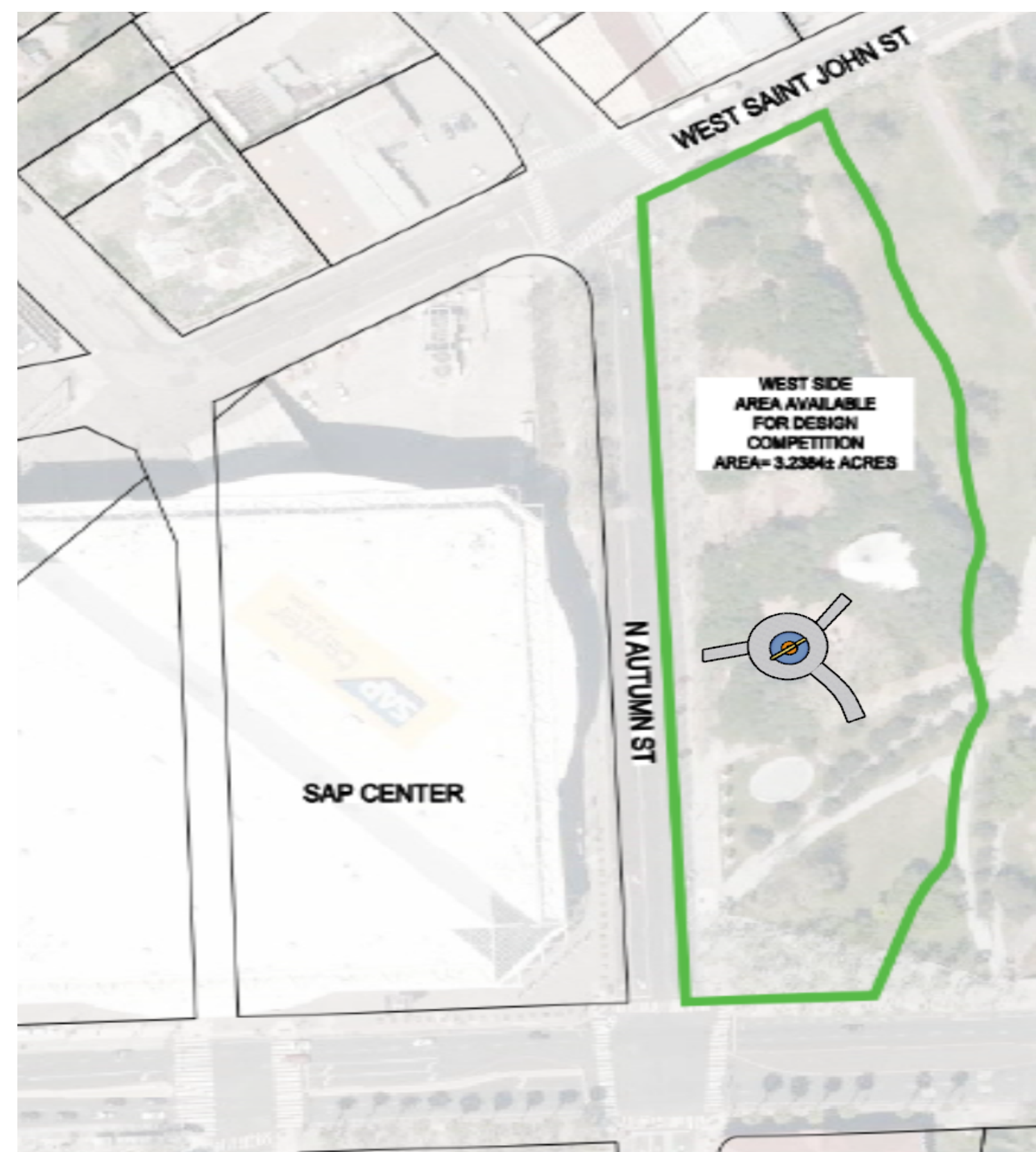
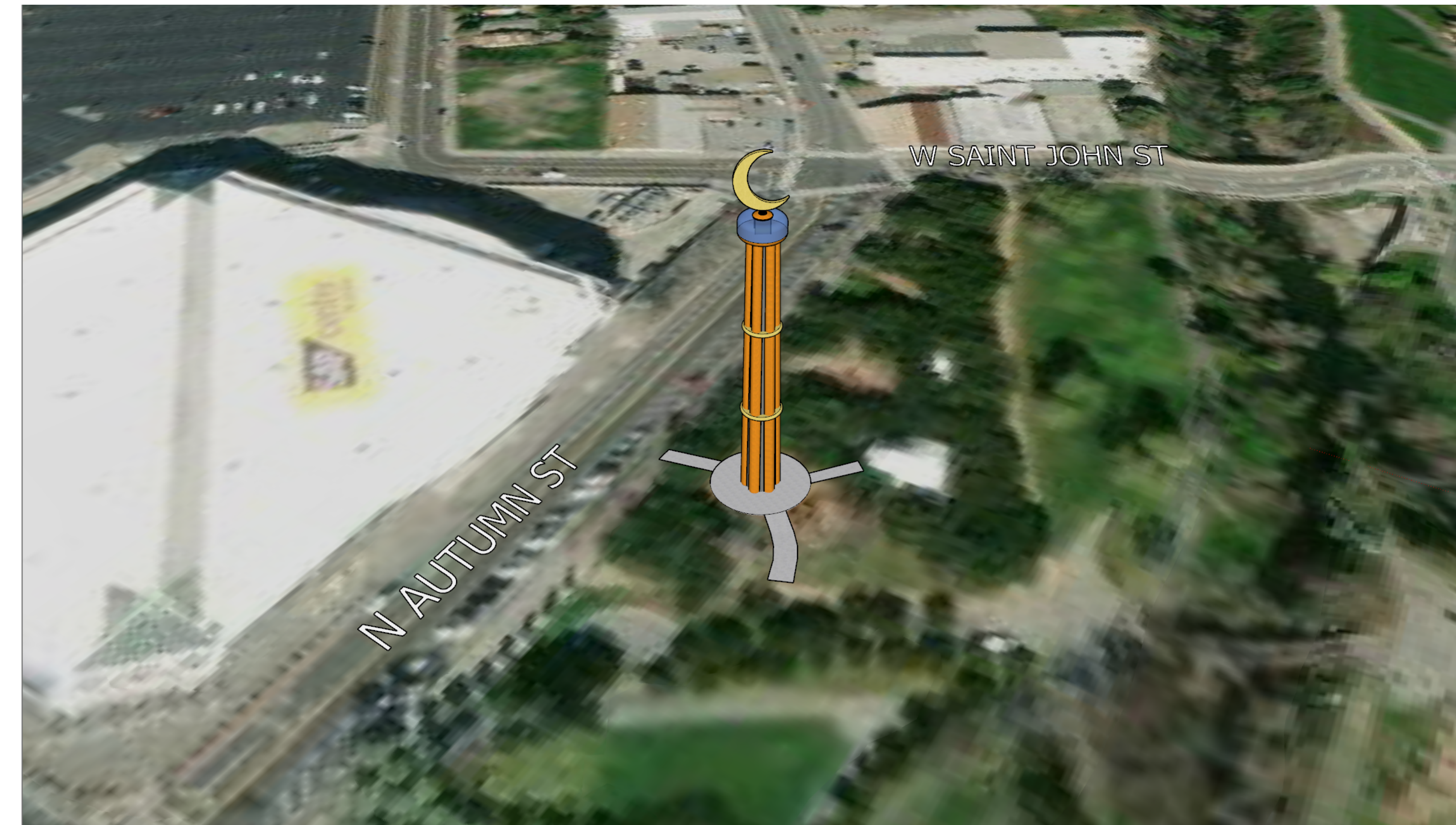
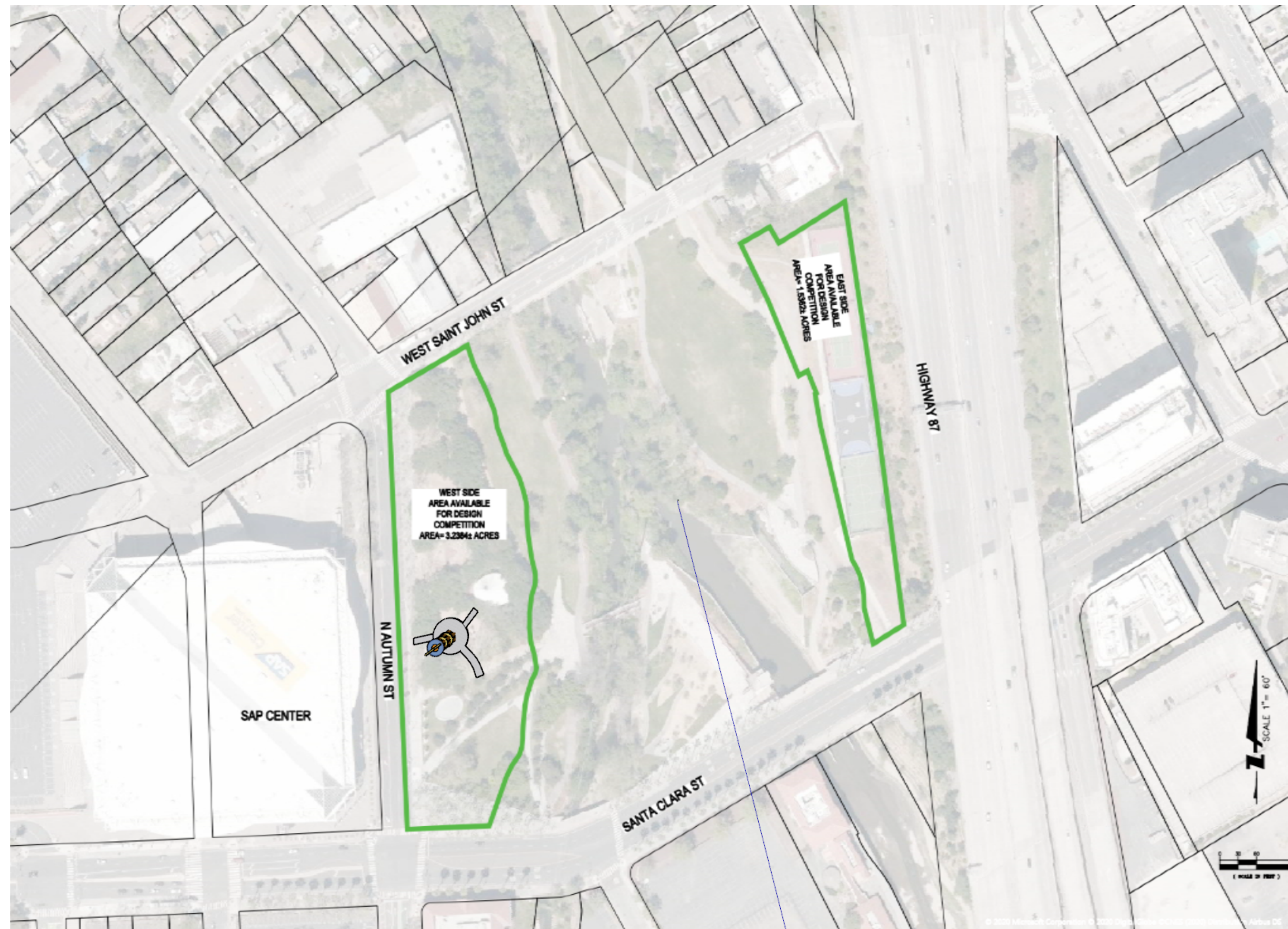
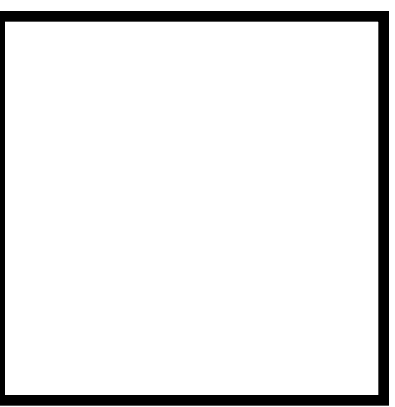
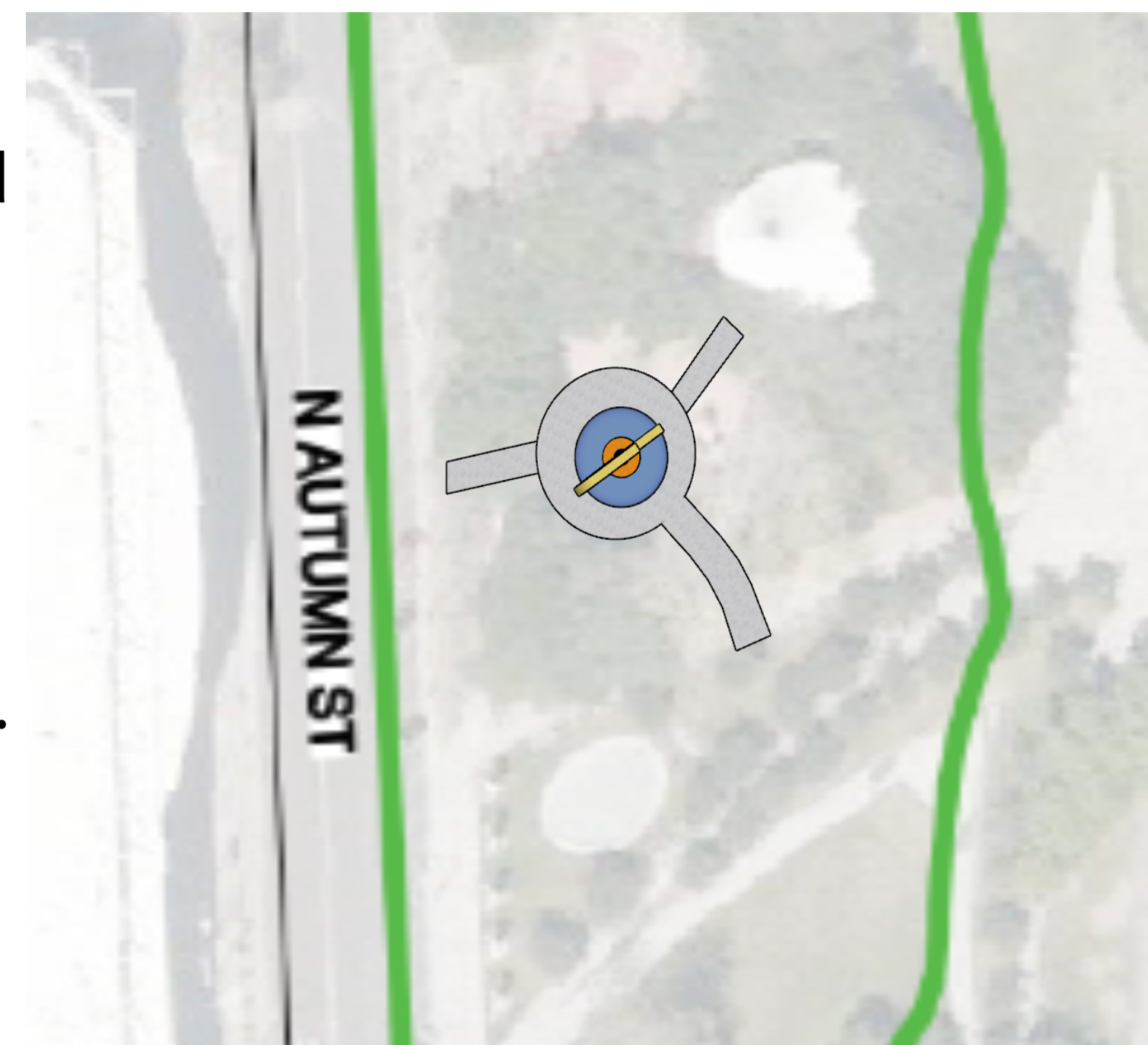


The Tech Scepter Location and Orientation



Top Left: Overview of entire park with Scepter.
 Top Right: Ariel view of scepter and surrounding area.
 Left: Close-up of West Side, as East Side will not be modified for this project.
 Right: Close-up top view of tower and immediately surrounding area.

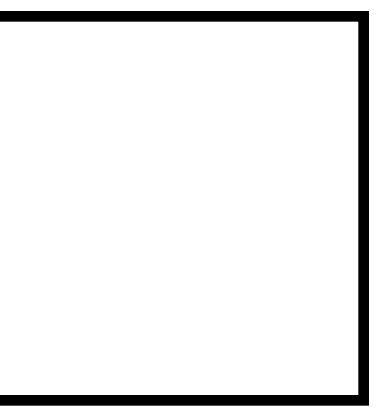


The rotation of the structure is subject to change along with final placement. The renderings and sketches shown here depict the approximate location of the tower. The current proposal is to erect the structure southwest of the children's carousel, at the existing playground.

The tower here intentionally minimizes the footprint in the interest of preserving the feel of the park. The space has cultural history, as well as an existing feel. Redoing the entire space seems counter-productive to our goals of enhancing the space, which can be done with preservation in mind.

The Tech Scepter Name and Design

Not just a monument – a community experience



Name

San José and Silicon Valley have grown tremendously due to the explosion of technology. This monument will stand not only as a testament to the history of San José's light tower, but as an homage to the entire technology sector that has bloomed in the region.

This new monument, the Tech Scepter, is perfectly named, evoking the memory of rapid technological advances spearheaded in the area, while also serving as a pun: the building itself is shaped to resemble a sceptre.

Energy

Even with strategically placed solar panels, generating enough energy to offset the lighting and elevator equipment is a challenge. To this end, the tower will feature hand cranks and stationary bikes that can be used both as exercise equipment to the public, and to contribute to the powering of the tower.

History

It was a light tower then, and will be again.

A tower seemed like the obvious homage, and while the entire crescent cannot be lit up due to concerns about uplighting, creative lighting of the undersides can allow for a well-illuminated base, as well as a striking image to those on the ground.

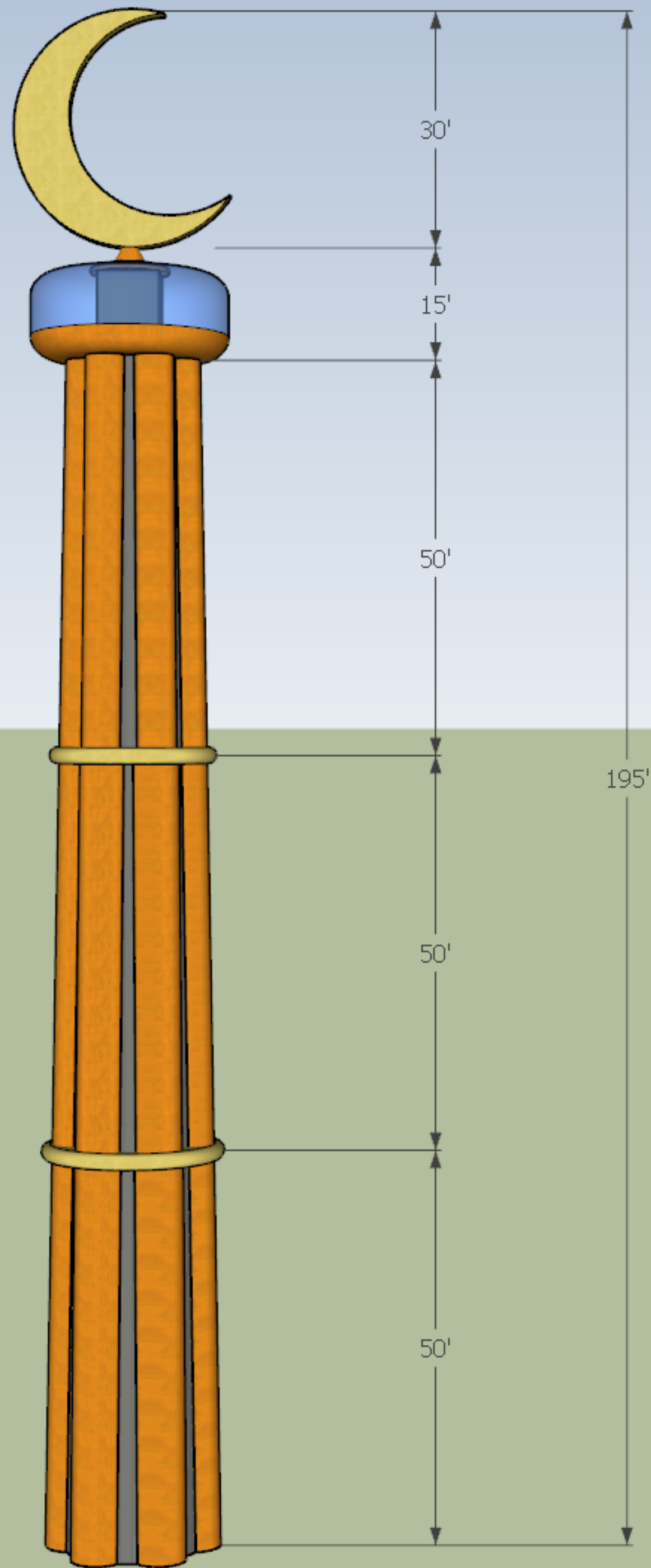
Footprint

We believe that this monument should enhance the park rather than re-form it. The park has a history, both culturally and aesthetically that we want to preserve and enhance. As such, we strove to design a monument that represents the history of the light tower, the continually evolving technology of the present, and a future of energy-conscious design.



Observation and Interior

The most famous monuments from around the world — whether they be the Atomium in Brussels, the Statue of Liberty, the Space Needle, or the Eiffel Tower — are not merely items to be observed, but to be interacted with. With that in mind, this tower will have an observatory that is open to the public, offering views not only of the park below, but of the entire city. In addition, the "Power this tower" integrations will create a special experience that allows visitors to engage with the tower in a truly unique and memorable way - by directly contributing to the energy-neutral goals of the tower.



Community involvement - "Power This Tower"

The base of the tower will have clearly visible signs displaying what percent of its daily needs have been met by the hand cranks and bikes. In addition to offsetting the energy requirements, this makes for a truly engaging experience, transforming a static landmark into a dynamic display of energy and power.