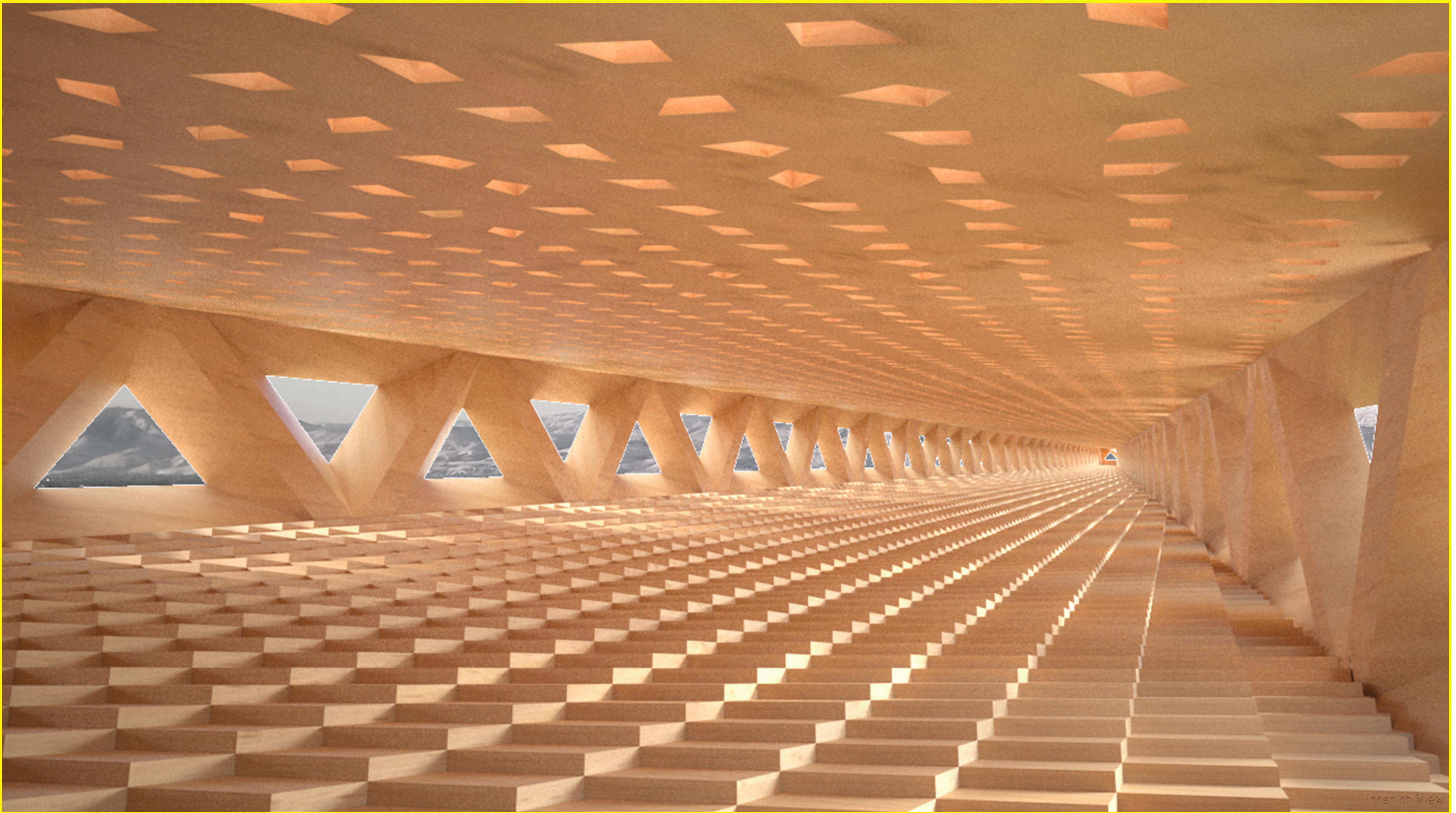


LIGHT TOWER

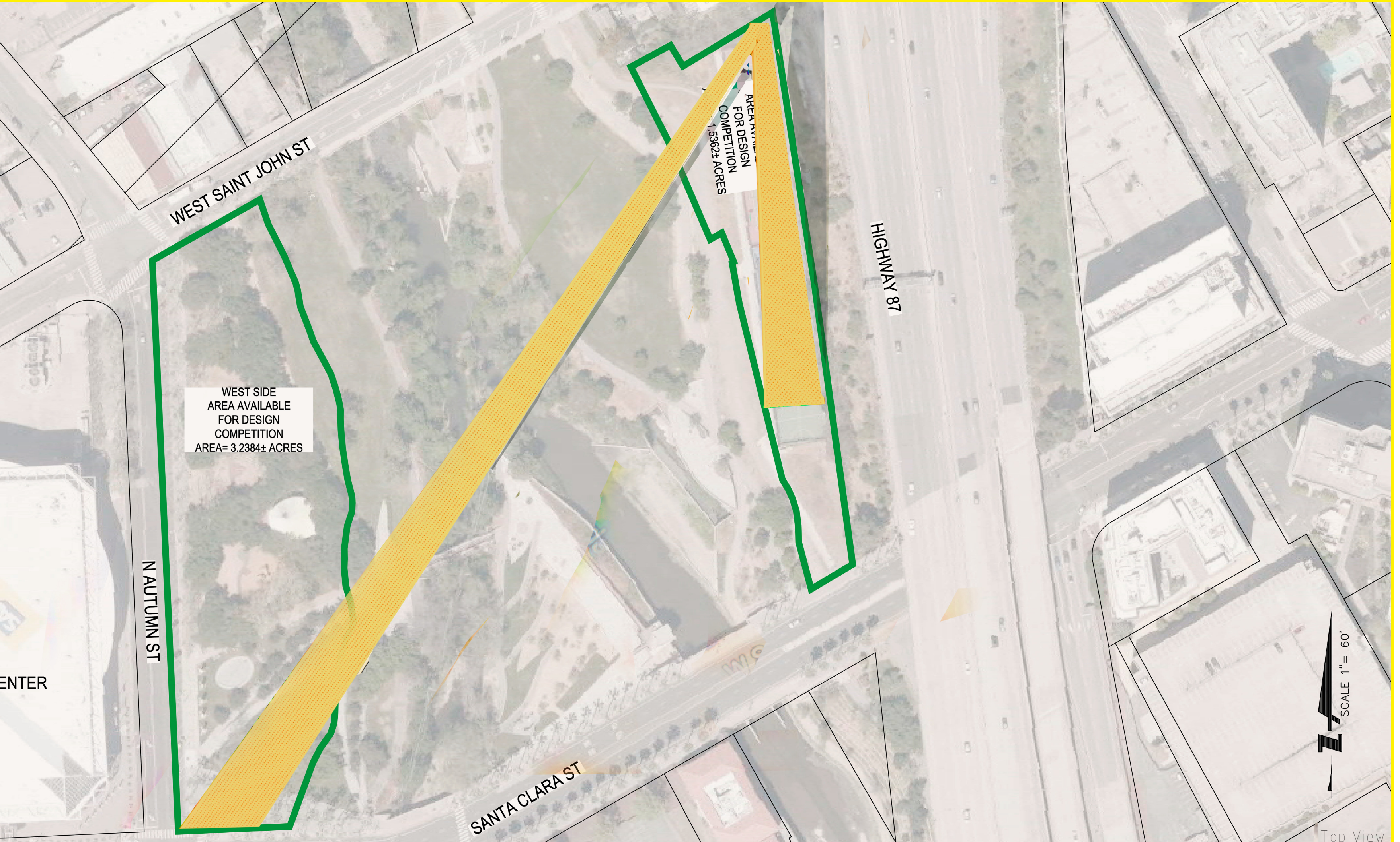


Aerial View



Interior View

The Lighttower project proposes two rays of light emanating from a lost light tower. Despite the fact that the competition was only inspired by the San José Electric Light Tower, which collapsed in 1915, we believe history has its profound value. The long light ray spans the creek and river and it is supported by a shorter stepped light ray, which provides structure to the double cantilever. A pixelated field within allows for flexible cultural, commercial and learning programs that can promote the work of startups, new technologies, exchange and knowledge in Silicon Valley.



Top View

LIGHT TOWER

