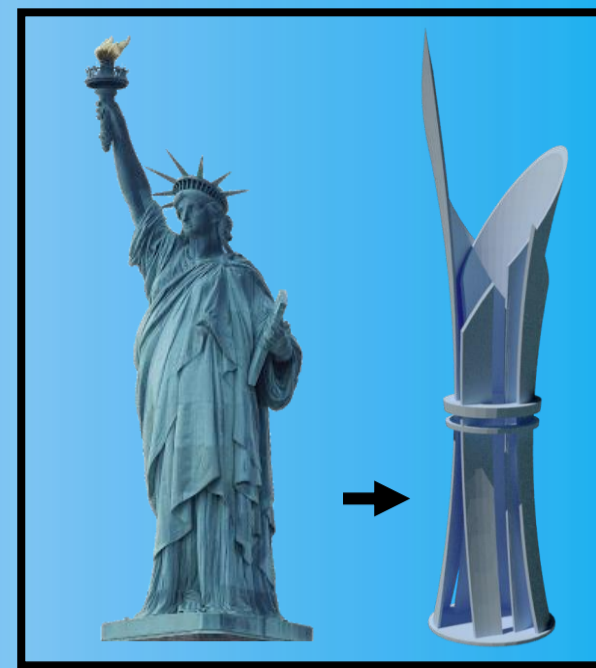
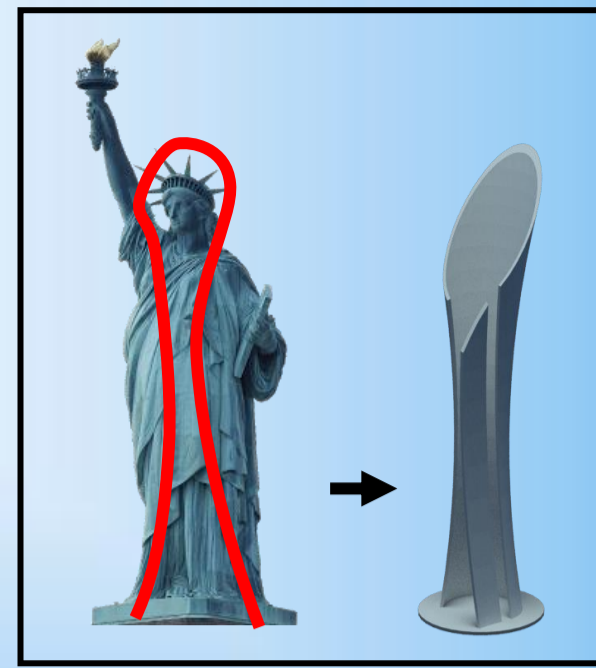


THE LIBERTY TOWER

MANIFESTATION OF "LIBERTY IN 21st CENTURY"

FEATURES OF THE DESIGN

- Exclusive cycling network that connects east and west sites; to encourage cycling culture.
- Two huge pavilion on both side of the site to host recreational activities.
- The East side pavilion is accessible directly through the highway, this makes the site more accessible.
- 4 maze arrangements along with sculptures for site activation.
- Tower designed to exhibit elegance with beautiful lightings. It also serves as a manifestation of "LIBERTY IN 21st CENTURY"
- Displays the Infrastructure developing capabilities of this era.



DESIGN DERIVATION OF THE TOWER FROM THE STATUE OF LIBERTY

WEST SIDE PAVILION

BI-CYCLING TRAILS

FOOT OF THE SCULPTURE

It is Accessible from 11 routes and will take the visitor to an height of 65 Ft from the foot of the sculpture.



- These Pergola structures are scattered across the site to create a fabric of greenery and recreational spaces.
- The top is mounted with a solar panel to meet the Net Zero Energy requirement.
- The top part also provide space for ornamental plants and creepers which will enhance the greenery of the site.

SITE VIEWING POINTS FOR BICYCLERS

8 ELEVATORS

8 Elevators to make the foot of the sculpture accessible for Bi-Cyclers.



This is One of the Two Pavilions which will host Recreational activities. The East side pavilion is directly accessible via the High way; making the site accessible from all directions. These pavilions will also have provisions to make the underground structures accessible, which has space for several recreational activities



PROVISIONS FOR CYCLING

The path Marked in Red is Exclusively developed for Bi-cycling; The cycling trail is also extended near the Central Sculpture and the whole site is made accessible via the cycling network, in order to encourage the culture of cycling and to facilitate a quick site tour.

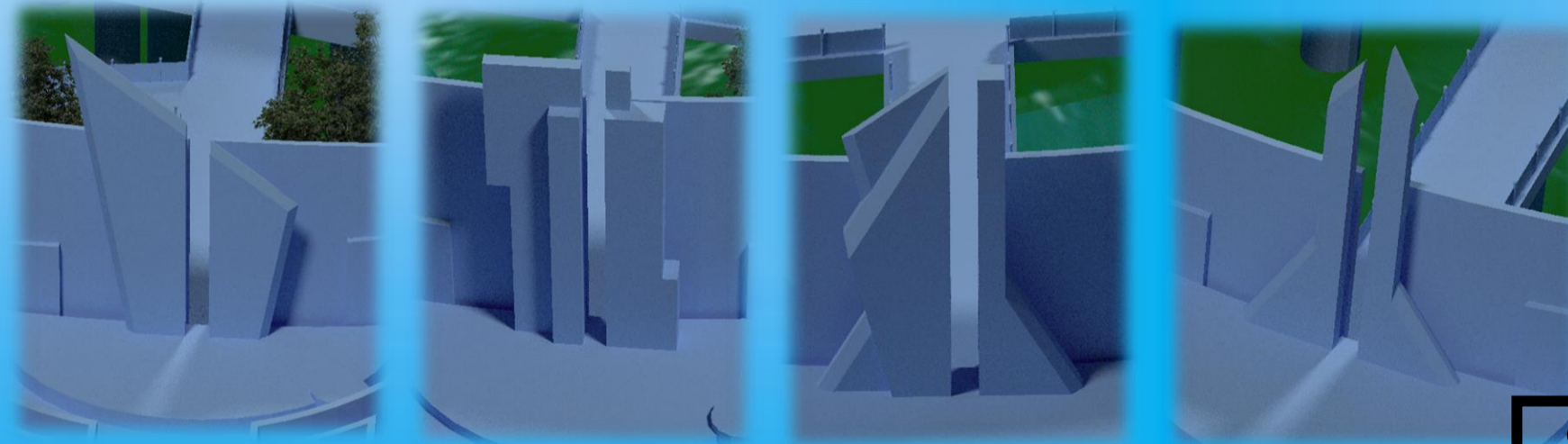


MAZE STRUCTURE FOR SITE ACTIVATION

4 maze structures are developed along the Bridge and all those maze arrangements will lead to the foot of the Sculpture.

At the end of every maze, 4 Huge Mysterious Concrete Sculptures are present, which has a narrow path, through which only one person can pass at a time, making a philosophical statement.

These Sculptures will be surrounded by still water works and surreal artifacts



THE SITE MAP

The point marked in red on the site map will be the Location of WEAVER'S BASKET.

The 5-Skaters and Reflecting Pool will be inside the building area marked in yellow, with Skater's monument facing the street.



CONFLUENCE POINT

Entrance to the foot of the sculpture without going through the Maze.

WEAVER'S BASKET

New arrangement around the weaver's Basket, with water features

