

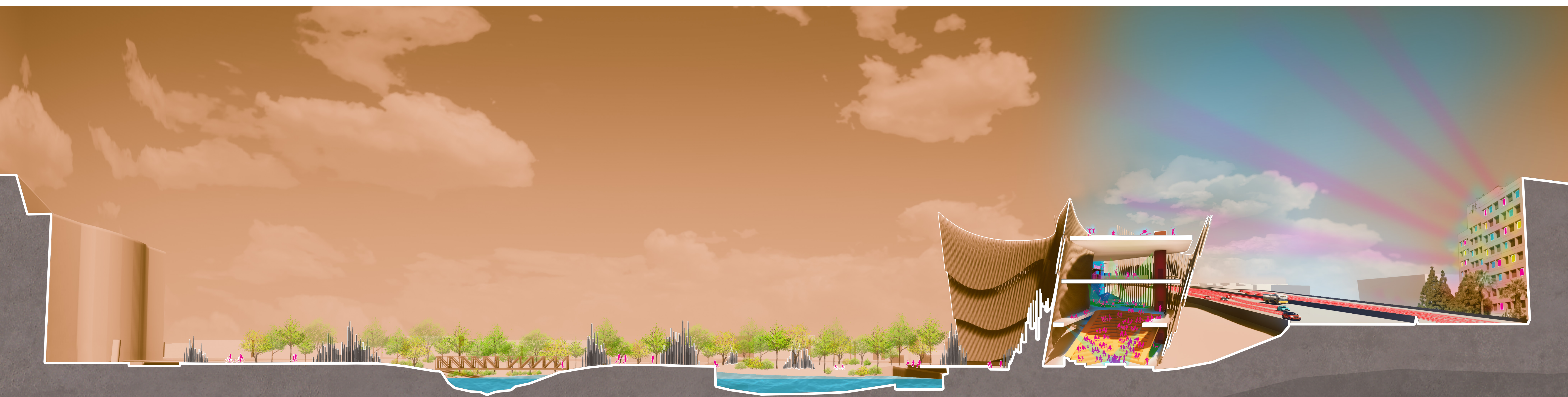


Perspeptive View from Santa Clara St.

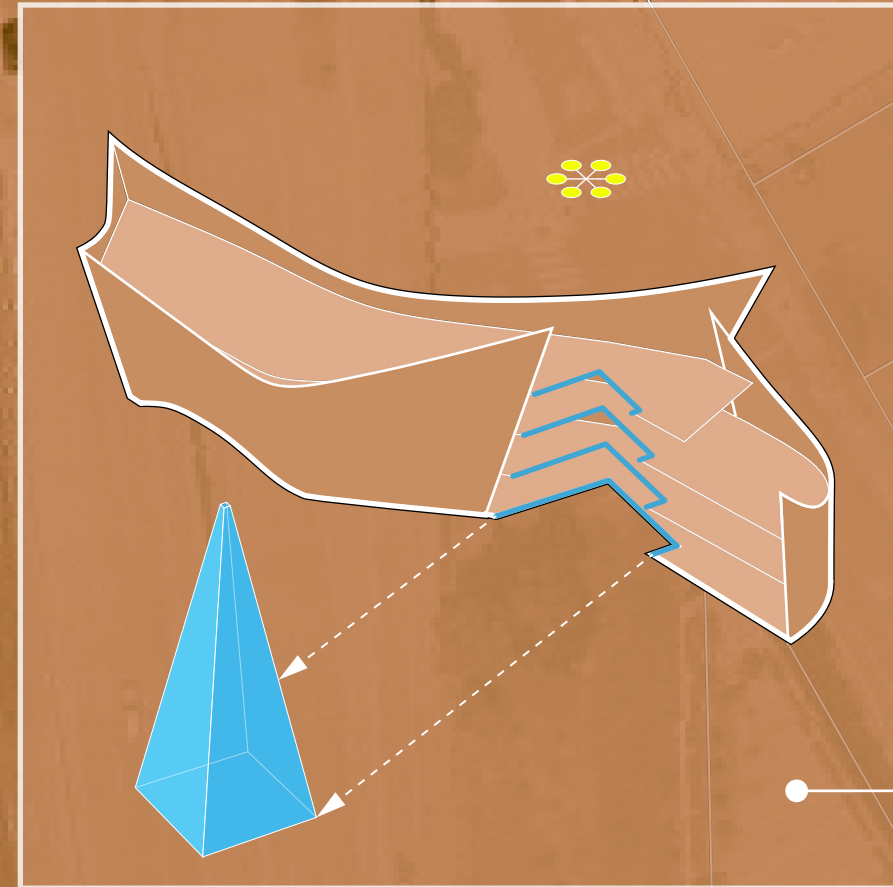
Capture Quiet.



Eye-Level View from Pump Track



Diagrammatic Site Section



Void in Massing
Same proportions as original light tower



Original San Jose Light Tower

A wall, clad with a new interpretation of the Tule Reed mat.

Blue and green ribbons flow intertwined northward from the Santa Cruz mountains to the San Francisco bay. Marshes created by the flows of the Guadalupe River and El Gato Creek give rise to the Tule Reed. For thousands of years the forefamilies of this valley fashioned their homes, their watercraft, their vessels from this common sedge.

An explosion of energy in the form of light, sounds and movement mark the waterway's bisection of the San Jose cityscape. Paralleled by the Guadalupe Freeway, the riverbed lacks shelter from its cacophonous surroundings. In the spirit of protecting this creature-path a new concept for Arena Green East Park springs vertical. Stacked one atop another an audacious mash up of fun is realized. Tennis, dog park, badminton, basketball, cafe, pump track, skatepark, auditorium and climbing wall combine to form a vertical antfarm of activity.

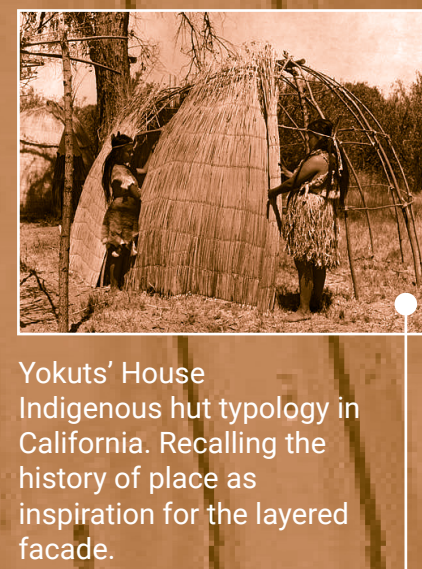
It is this wall that is clad with a new interpretation of the Tule Reed mat. Extremely dense on its river face, blocking sounds, light and movement the "mat" is a nearly opaque buffer. The highway and cityside of this structure's perimeter is skeletal, inviting views and celebrating dynamic interactions. These oversize "reeds" will be regionally sourced in a durable, green material. This exploration of materials and detail will honor the spirit of a humble, marsh side sedge.

On the northeastern face a pyramidal void exists. This void mimics the silhouette of the historic Owens Electric Tower. A hexagonal arrangement of 6 clustered lights hover atop this chasm harkening back to that 1981 beacon.

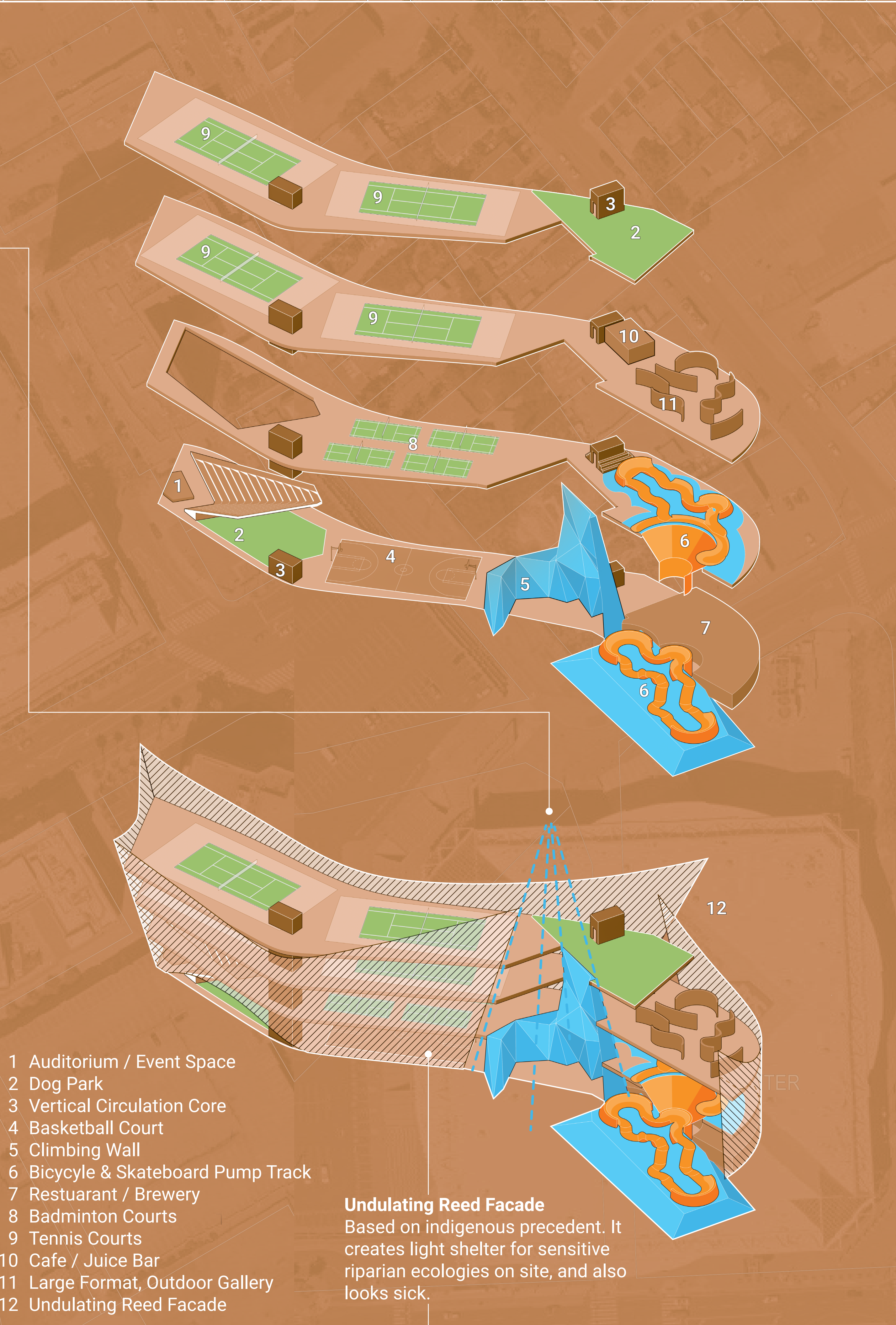
City tower dwellers and passing motorists will marvel at the activated ant farm with its subtle tip of the hat to this city's iconic light tower. On its flip side, the riverscape shall be shielded by this wall..... a moment to Capture Quiet.



Tipi-Pole Pines
Representation of potential material for 'reed' facade

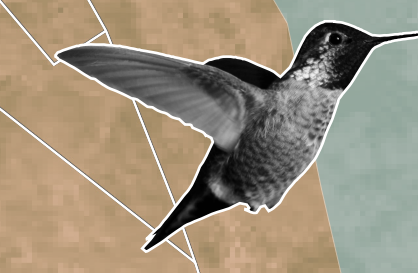


Yuku'ts' House
Indigenous hut typology in California. Recalling the history of place as inspiration for the layered facade.



- 1 Auditorium / Event Space
- 2 Dog Park
- 3 Vertical Circulation Core
- 4 Basketball Court
- 5 Climbing Wall
- 6 Bicycle & Skateboard Pump Track
- 7 Restuarant / Brewery
- 8 Badminton Courts
- 9 Tennis Courts
- 10 Cafe / Juice Bar
- 11 Large Format, Outdoor Gallery
- 12 Undulating Reed Facade

Undulating Reed Facade
Based on indigenous precedent. It creates light shelter for sensitive riparian ecologies on site, and also looks sick.



Black-Chinned Hummingbird
Archilochus alexandri
A bird expected to use the riparian habitat. It is an example of both a pollinator species and of the enudicated ecosystem that is to be bolstered through polyculture planting.



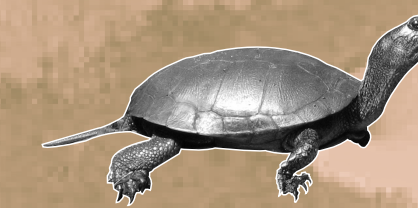
California Buckeye
Aesculus californica
A native pollinator plant species in San Jose. To be used in polyculture plantings both as remediation of site disruption from construction, and also as a forward-thinking biological initiative.



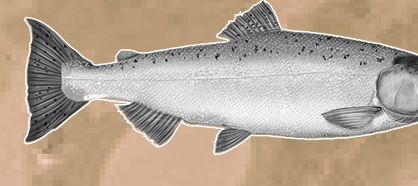
Wild Buckwheat
Eriogonum gracile
A native pollinator plant species in San Jose. To be used in polyculture plantings both as remediation of site disruption from construction, and also as a forward-thinking biological initiative.



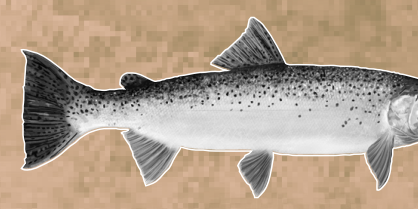
California Honeysuckle
Lonicera hispidula
A native pollinator plant species in San Jose. To be used in polyculture plantings both as remediation of site disruption from construction, and also as a forward-thinking biological initiative.



Western Pond Turtle
Actinemys marmorata
A species of special concern that has been observed within the riparian habitat on site and is of special concern for protection through thoughtful design.



Chinook Salmon
Oncorhynchus tshawytscha
Threatened species that makes use of this riparian habitat and is of special concern for protection through thoughtful design.

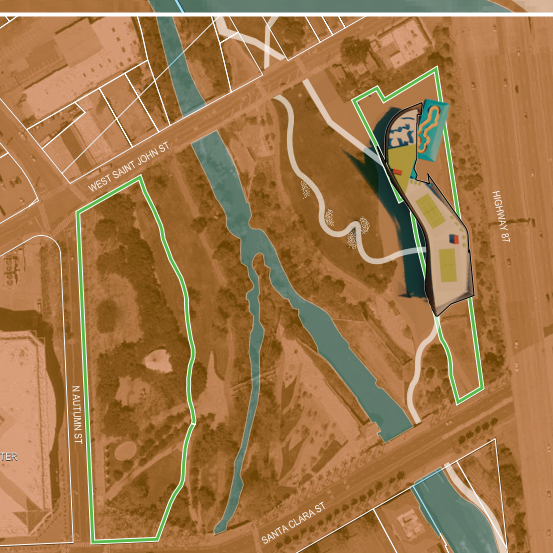


Steelhead Trout
Oncorhynchus mykiss
Threatened species that makes use of this riparian habitat and is of special concern for protection through thoughtful design.

WEST SAINT JOHN ST

SANTA CLARA ST

NAUTUUM ST



Site Plan