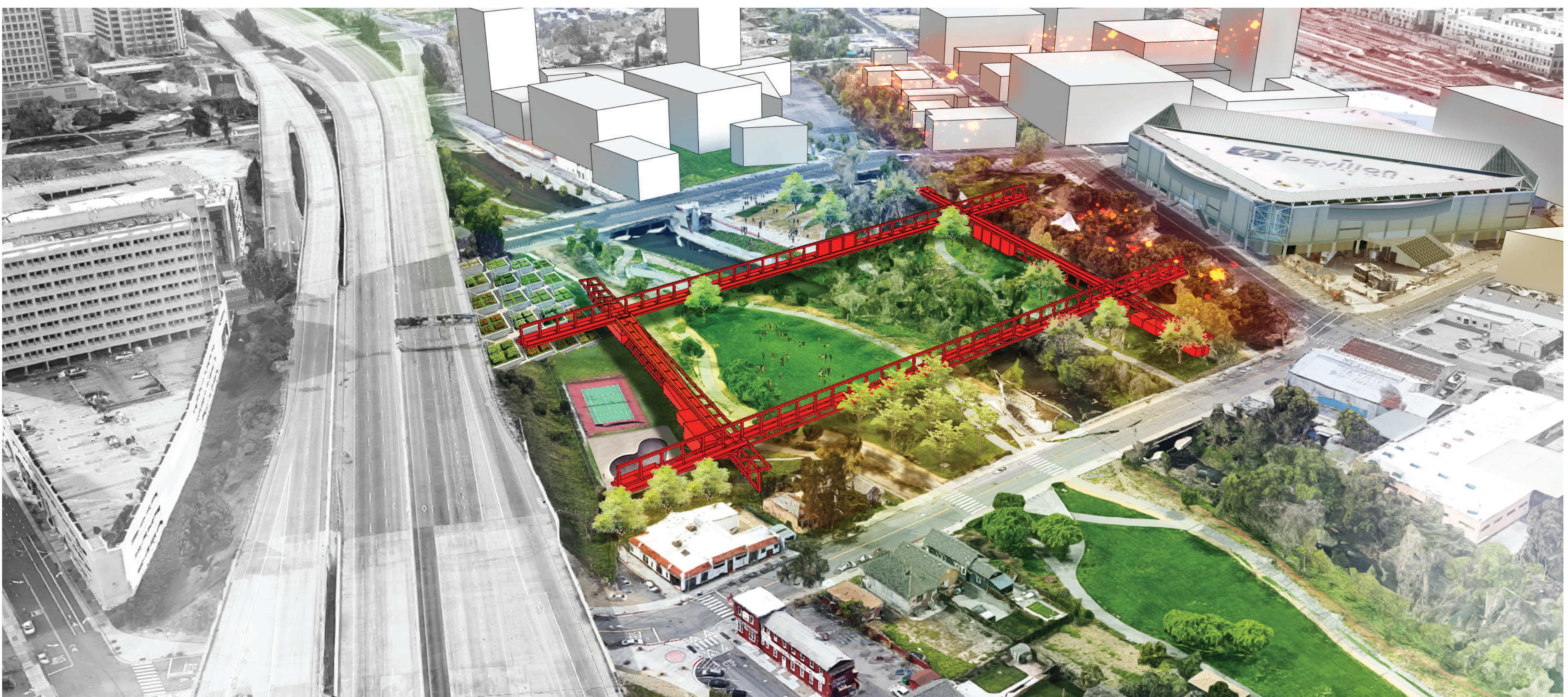


Golden Gate Bridge

#SanJose



**Hashtag, as Chris Messina, the first user transforming "pound" symbol into an HTML-activated device claimed, is "...easy and compelling to use in a fast-moving communication..."**

**#SanJose** aims at building quick legibility, consistency, and identity on multiple scales, connecting the local communities and beyond to a new public focal point, and tagging San Jose on the global map.

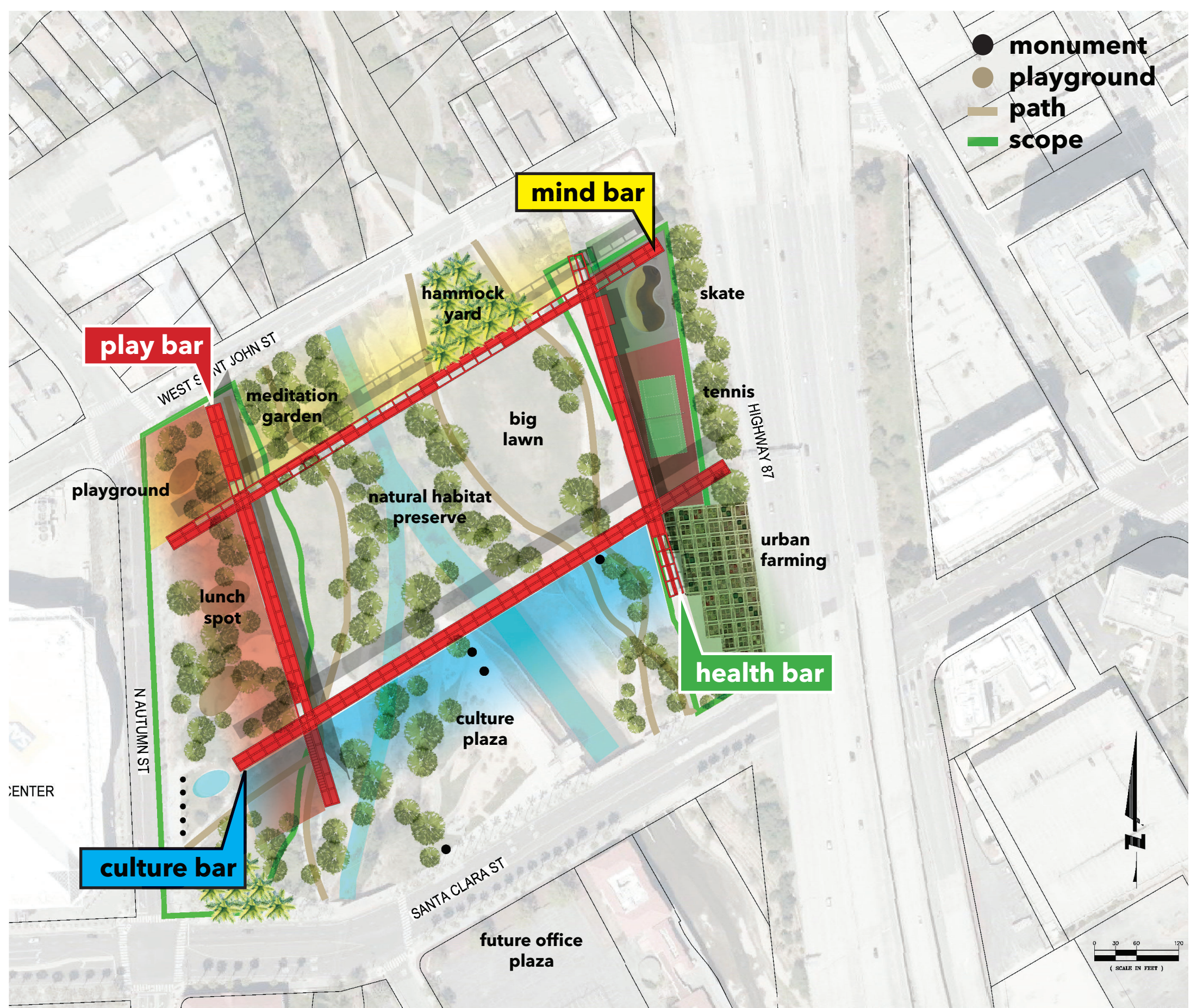
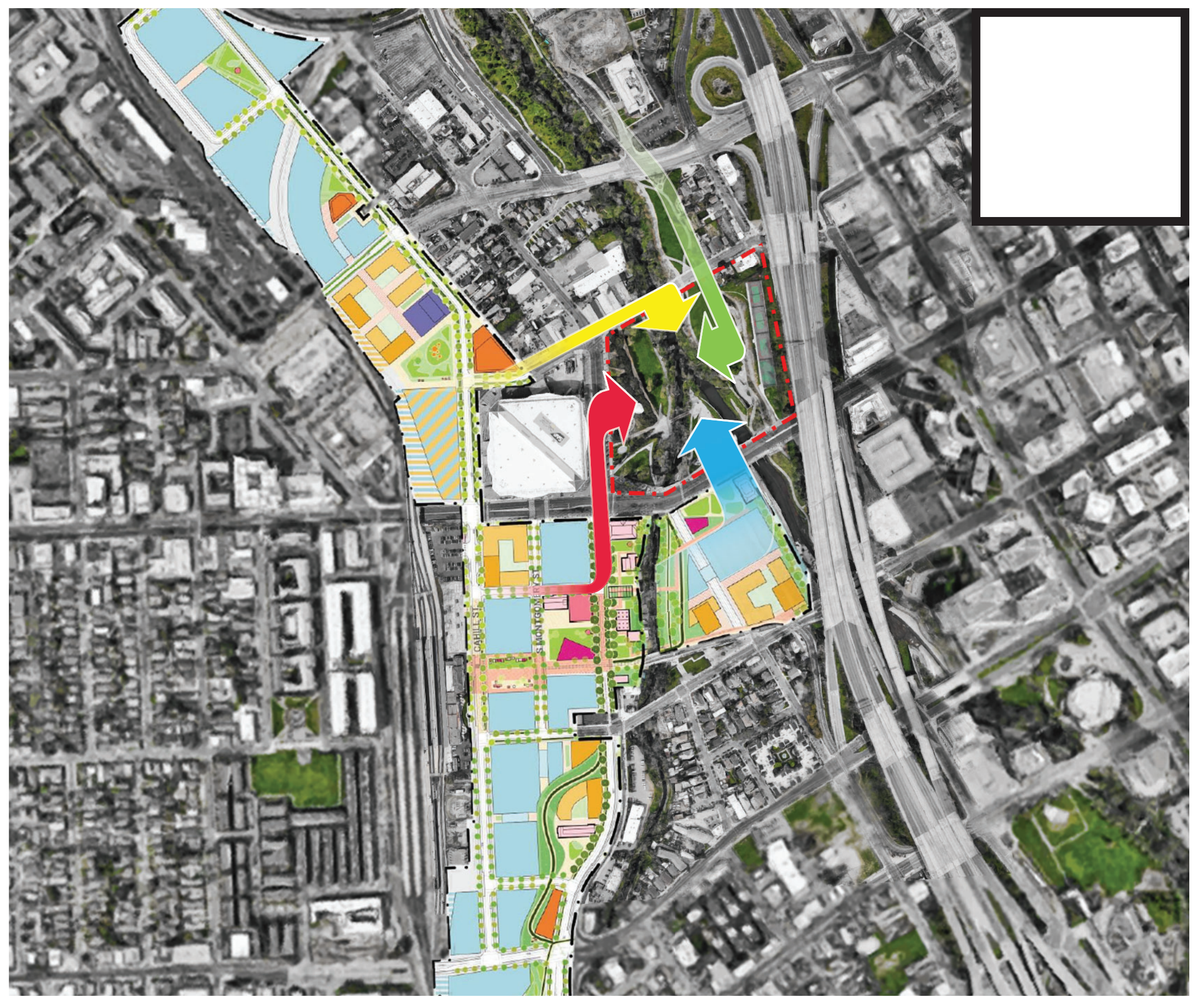
**#SanJose** consists of four identical and bold structural "T"s made of Vierendeel Trusses. The form and the color scheme evoke the dialogue with another iconic structure, Golden Gate Bridge, located at the north end of San Francisco Bay. Each "T" tailors its own unique set of programs, yet connects on a linked network with different scales of urban strategies, social mechanism, and distinct spatial sensitivity.

The horizontal presence creates a recognizable symbol directly beneath the flight paths of the Mineta San Jose International Airport without challenging the aviation restriction. On the ground, # as a site strategy approaches to establish the design framework and deploy connections and interventions between future Google campus, SAP Center, Riparian Corridor, Natural Habitat, New, and Old Town. The four "T" structures act as armatures for "Play", "Health", "Mind", and "Culture".

On the west and east sides of the park, "Play" and "Health" T structures are located within the permitted zones for ground supports. "Play" engages public participation along N. Autumn St, the thoroughfare of future Google campus. Elements of intimate scale plaza, open dining space, and community park are linked along the framing canopy. On the west, "Health" defines zones for urban gardening and farming, and preserves sports fields for tennis, basketball, and skate.

On the north and south, "Mind" and "Culture" supported by "Play" and "Health" are elevated across Riparian Corridor. "Mind" is an elevated walk path, located at the north side of the park, overlooking the natural habitat preserved at the center of #. View platforms with infographics of native species intertwine within the structure. Hammock park and open picnic area underneath are shaded by the structure above. On the south, "Culture" serves as a portal to the existing public art, monuments, and amenities including Five Skaters, Weaver's Gift, San Jose Vietnam Memorial, Tributaries Monument, and Guadalupe River Trail.

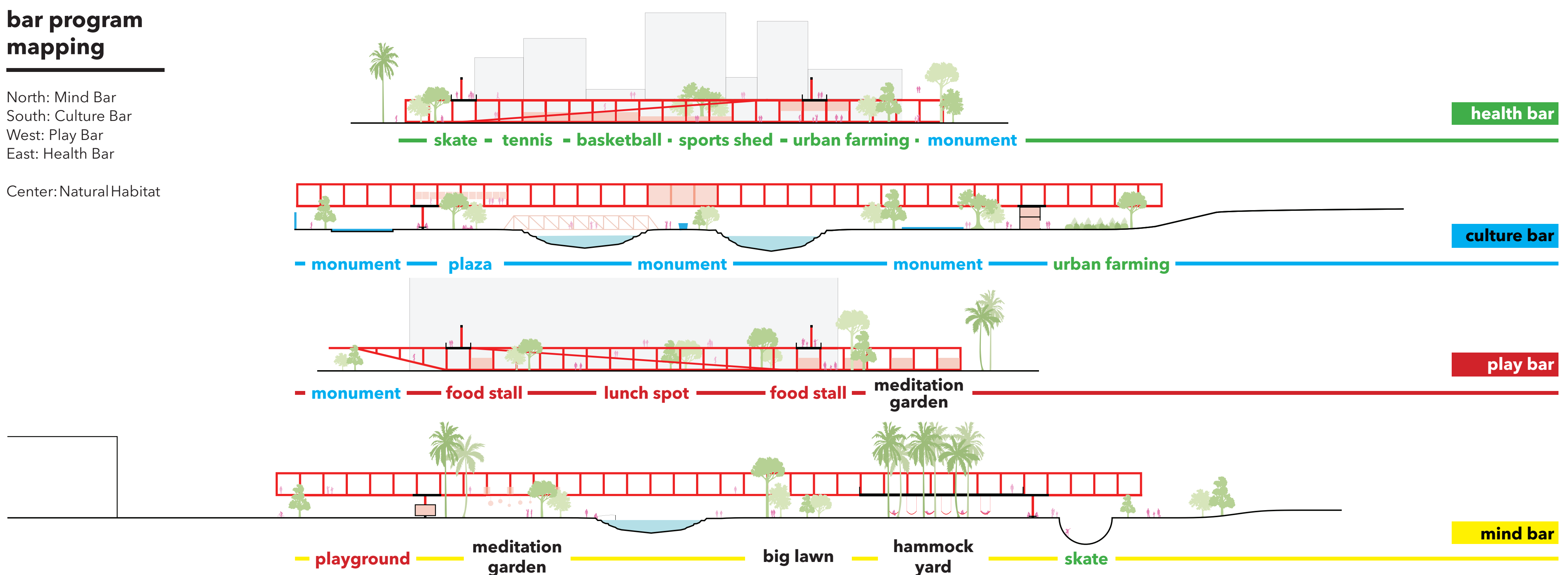
At the center, surrounded by #, Natural Habitat is protected by the four "T"s. The structures act as urban porches to the park and waterfront with cautious control to preserve the natural environment. Visitors can interact with every part of the structure and feel immersed in the environment from all directions in #SanJose, a new icon with socially conscious thinking on multiple scales.



## bar program mapping

North: Mind Bar  
South: Culture Bar  
West: Play Bar  
East: Health Bar

Center: Natural Habitat



## structural habitation strategy

