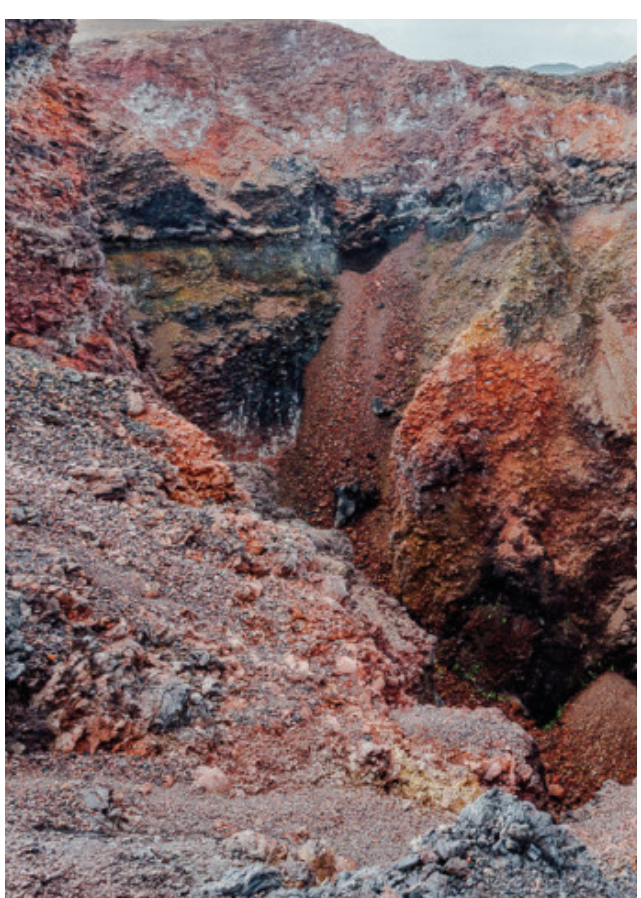




interior view
1:50 physical model

SCORIA GARDENS URBAN CONLUENCE, SILICON VALLEY

The work reinterprets the attitude of Lanzarote's Cesar Manrique aiming to think not only as an architect but with the sensibility of an ecologist, geologist and gardener. This is in the hope of offering a new kind of relationship to nature; one that is ambiguous in its formation and embraces an entropic dialogue with nature. This proposal aims to overlap our artificial and natural environments using the immediate qualities of a common igneous product: Scoria. The Scoria Gardens is then a monumental geological and volcanic grotesque sanctuary lying low within the heart of San Jose.



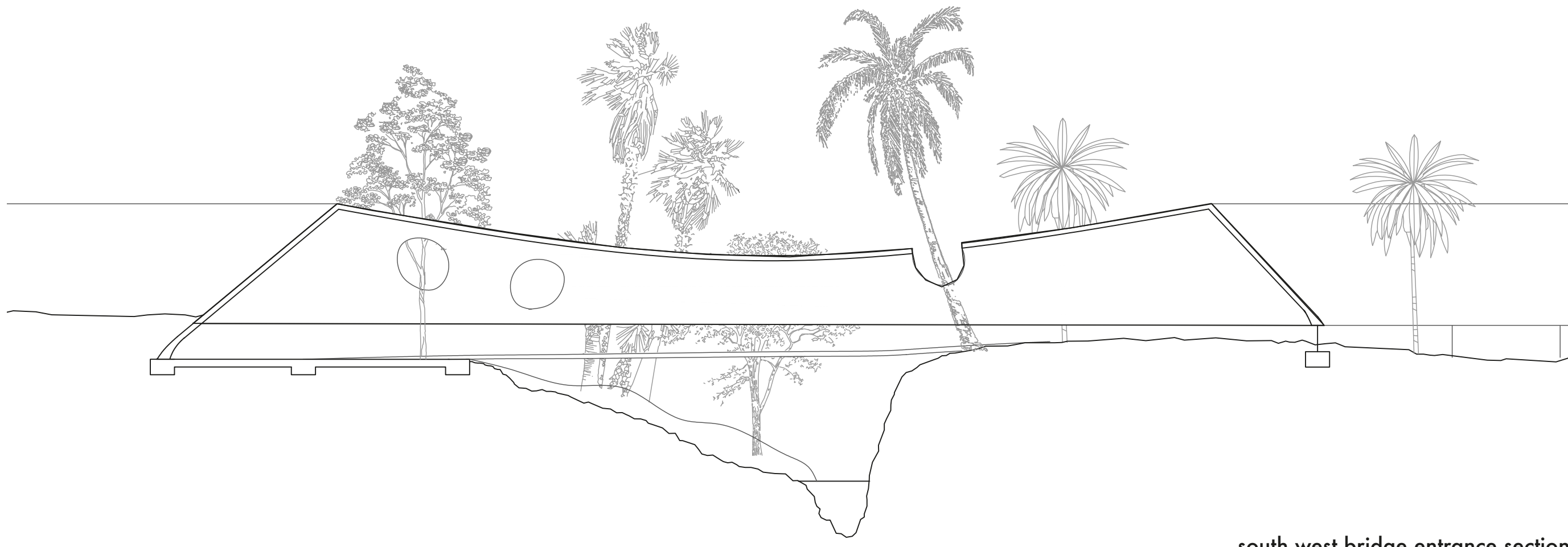
natural scoria formation
galapagos, sierra negra



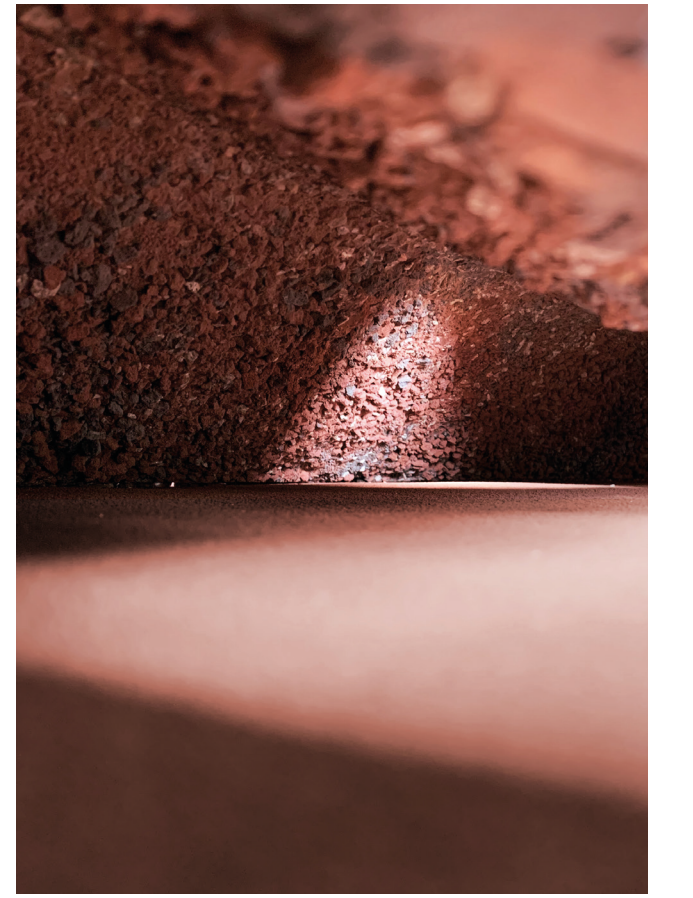
taro de tahiche
cesar manrique



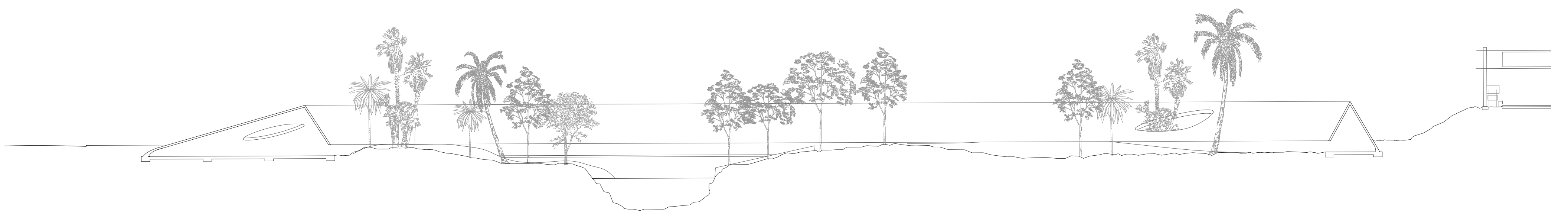
site plan
1:1000



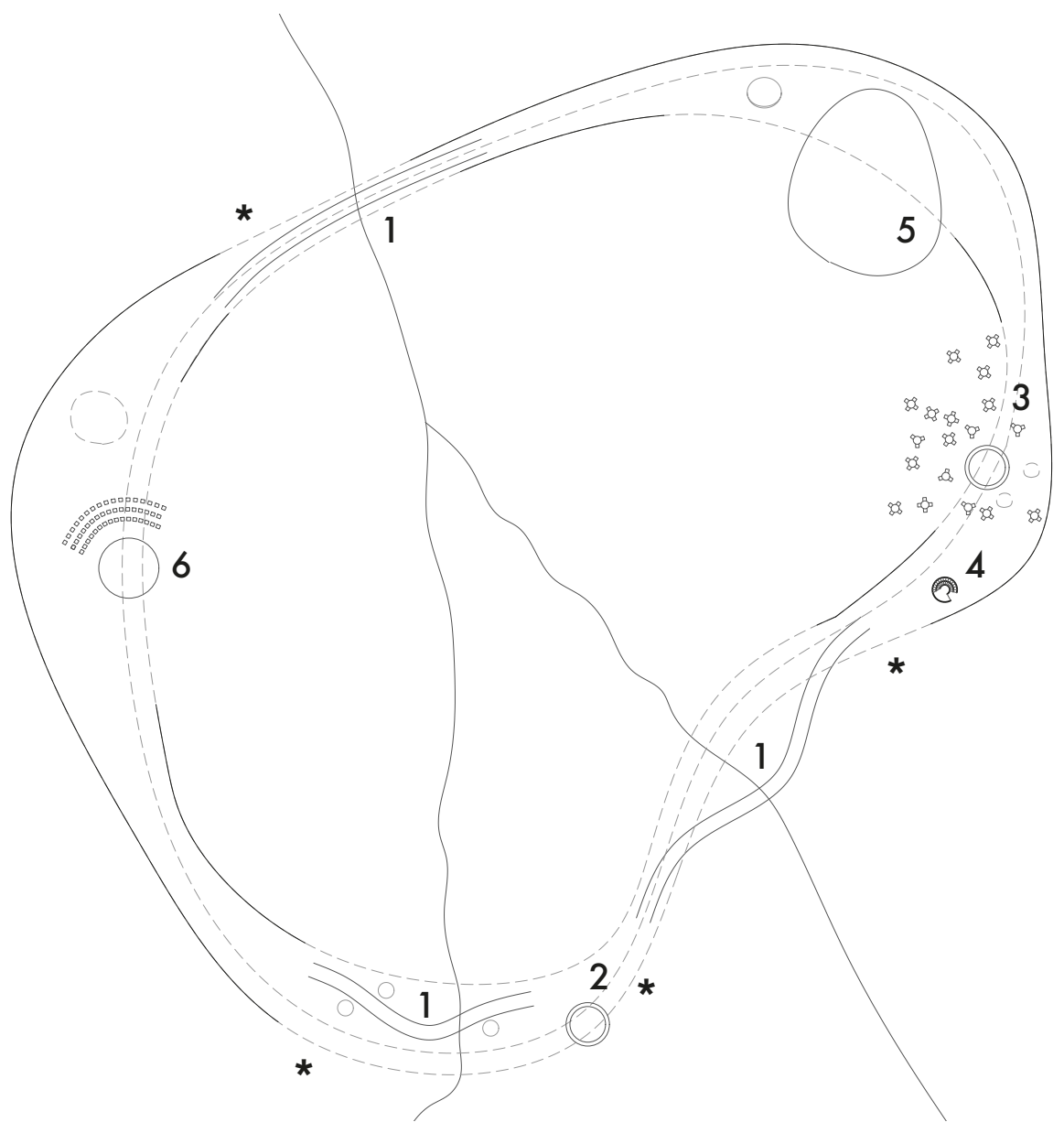
south west bridge entrance section
1:250



interior view
1:50 physical model



long site section
1:500



key plan
1:1500



aerial view
1:50 physical model

KEY

- * - entrance
- 1 - bridge
- 2 - gift shop/reception
- 3 - cafe
- 4 - stair down to wcs
- 5 - pond
- 6 - informal stage