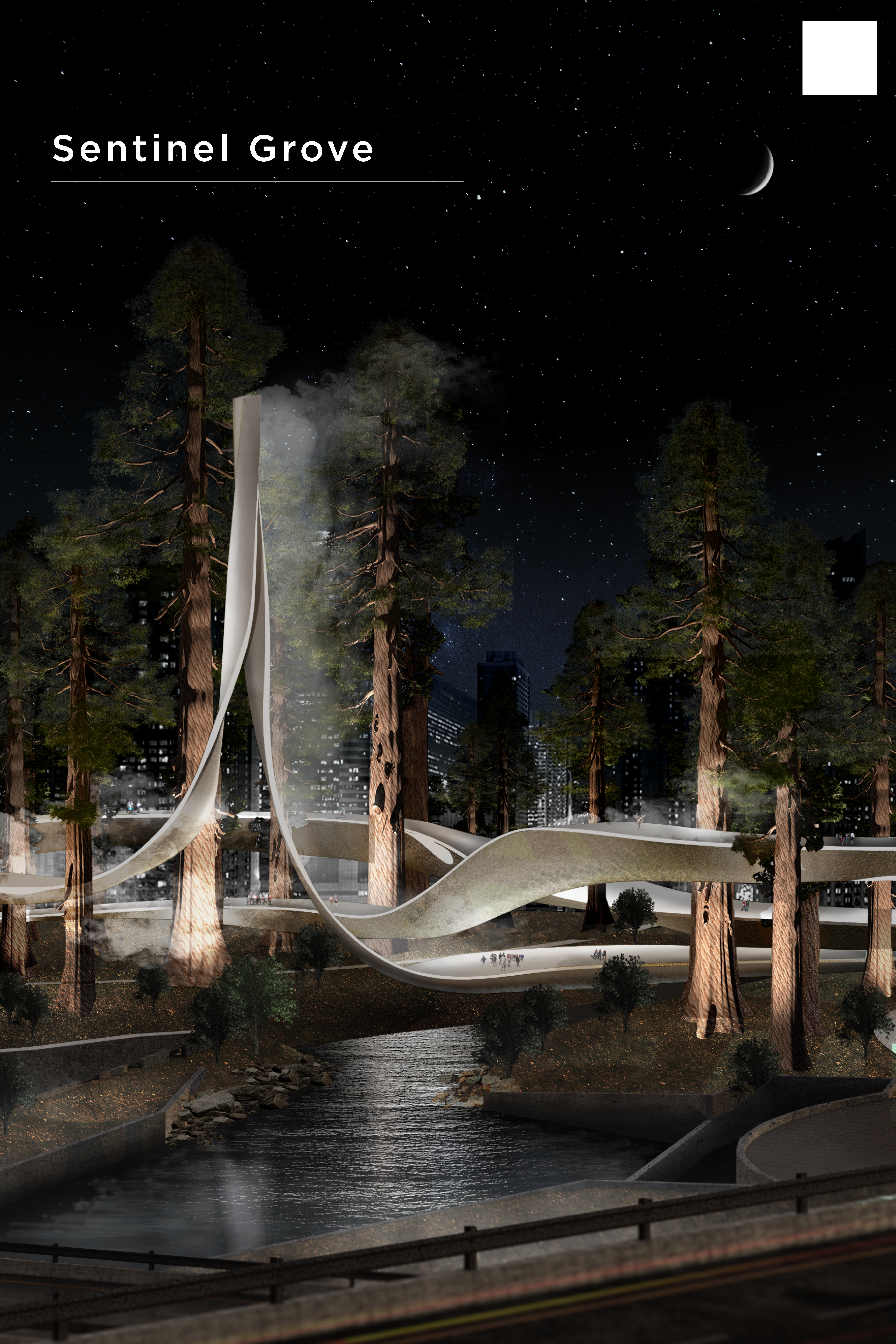
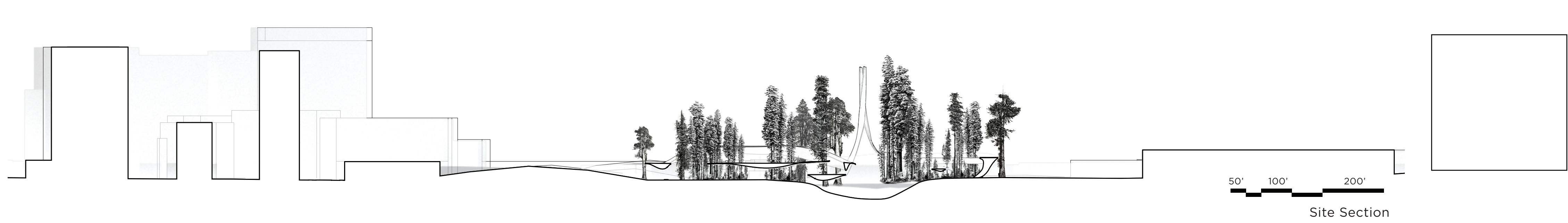


# Sentinel Grove

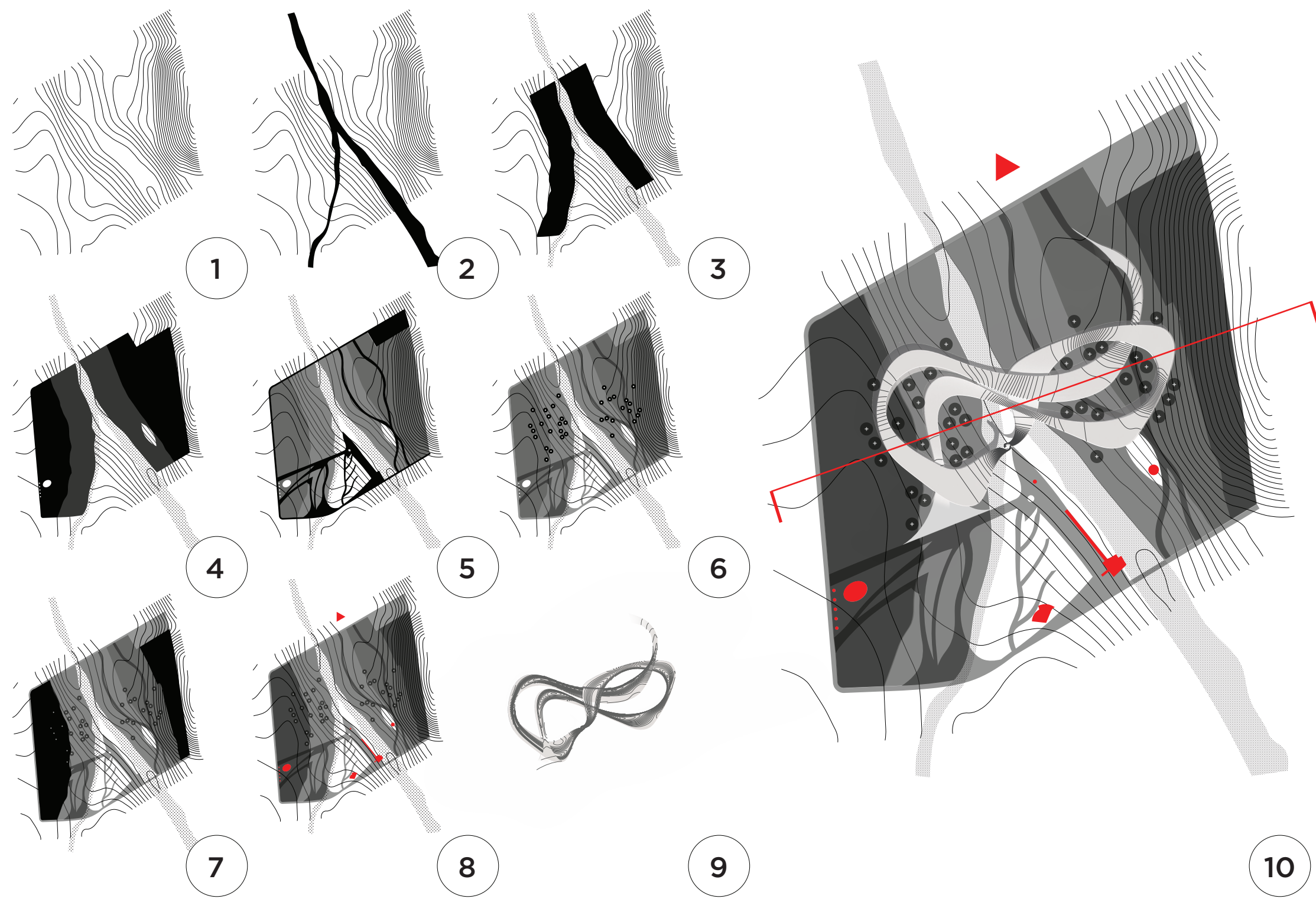
---

---





50' 100' 200'  
Site Section

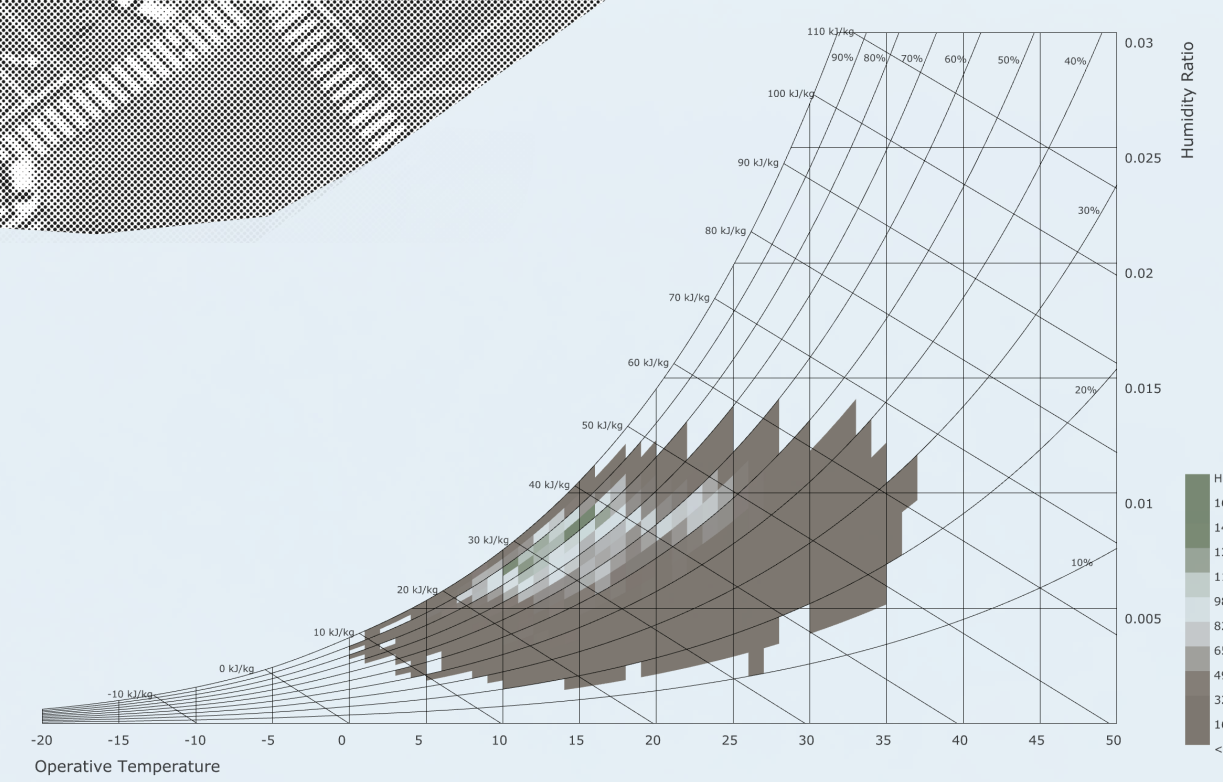
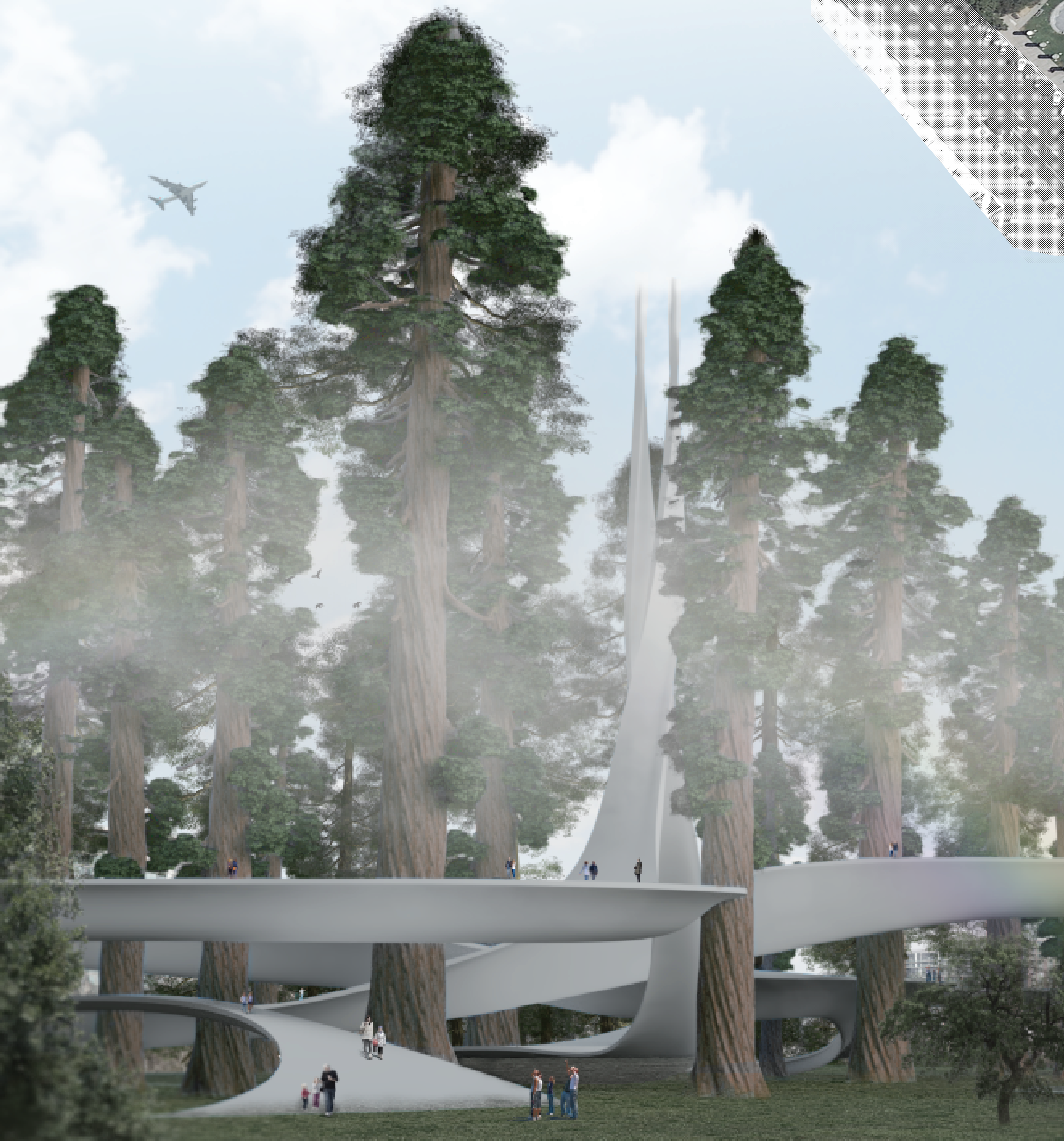
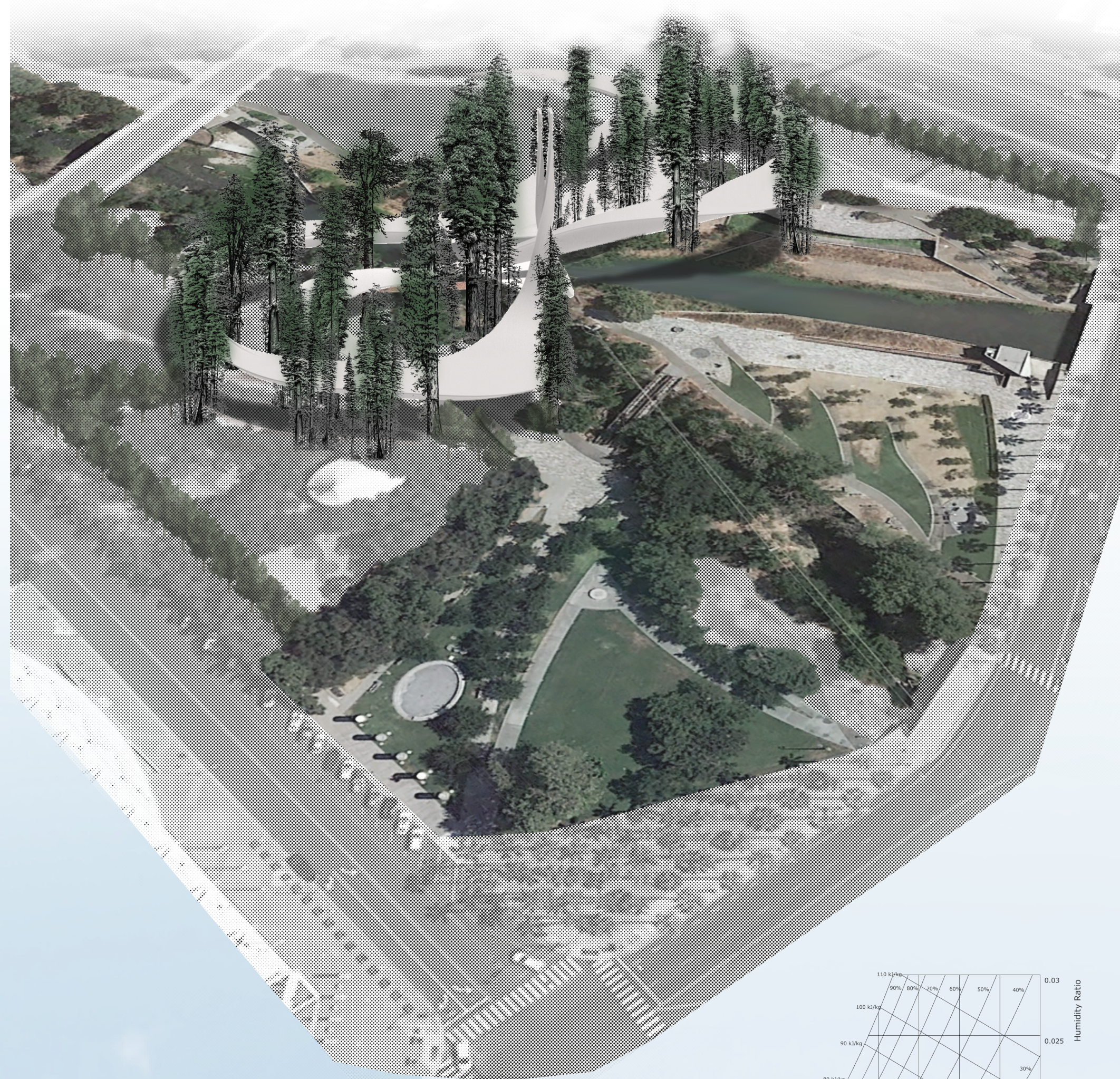
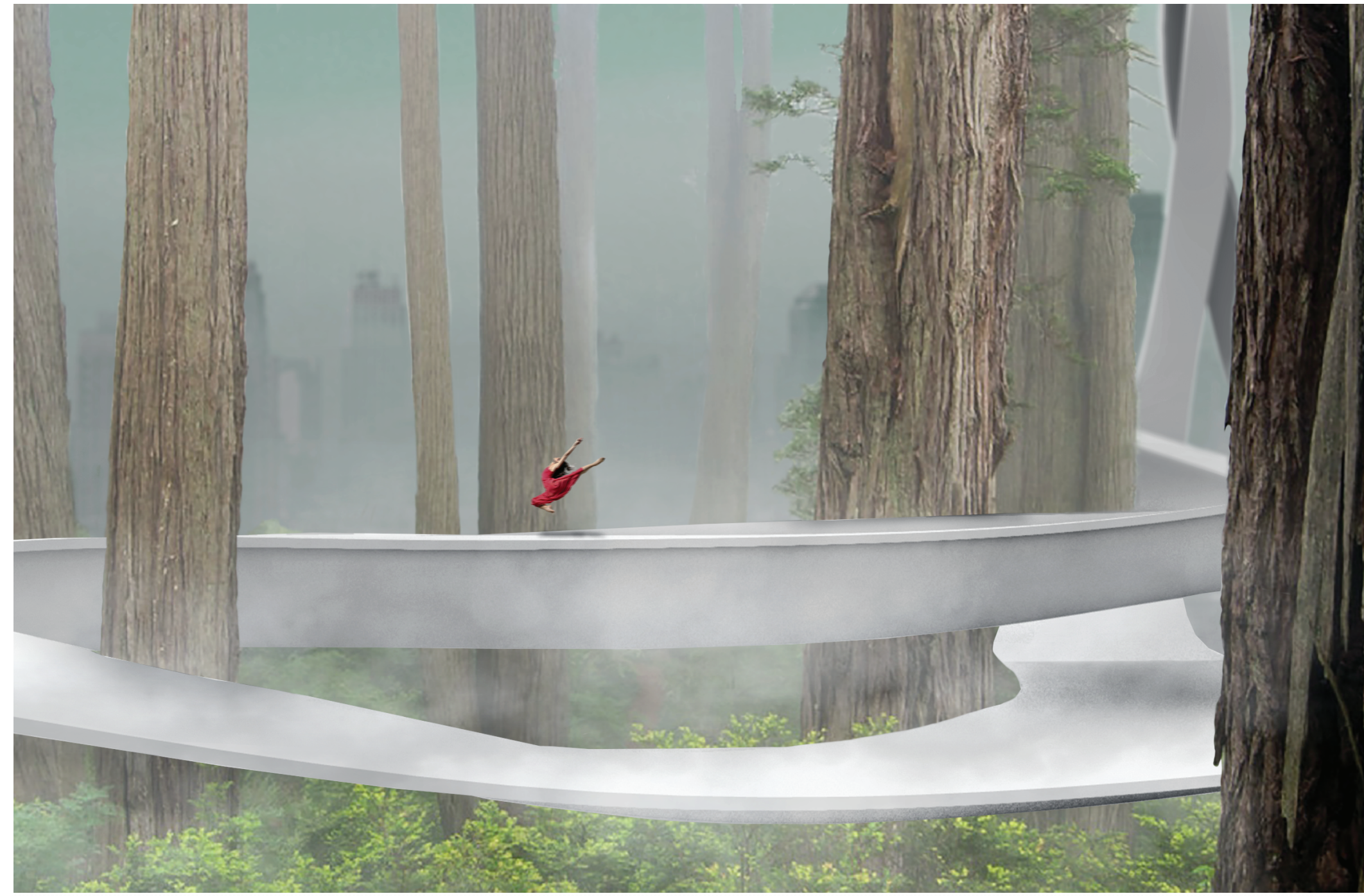


Sentinel Grove embodies the symbiotic relationship between innovation and the natural world by celebrating San Jose's past and growing its future.

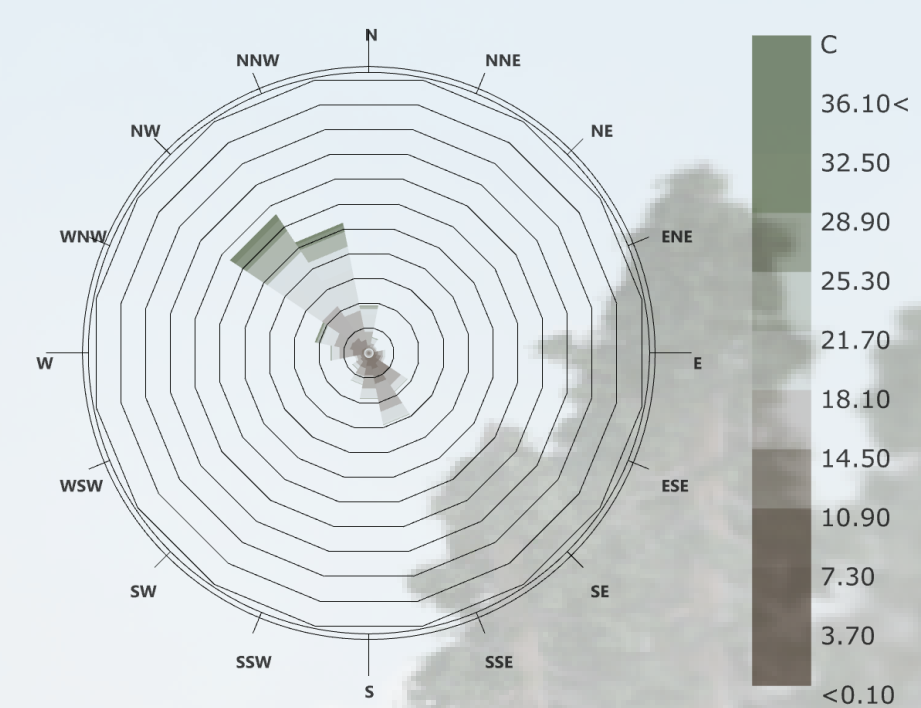
The region's abundance of natural wealth drew people from across the world and of all walks of life. Held fast by the weather, creative minds cultivated a new era for humanity. The spirit of the region is encapsulated by those with limitless ideas and a lasting connection to nature.

By introducing native coastal redwoods into the midst of the skyline, San Jose will demonstrate to the world the importance of both nature and technology for humanity's future success.

1. Existing Topography
2. Guadalupe River / Los Gatos Creek
3. Riparian Setback of 100ft
4. Area Available for Landscaping
5. Existing Hardscape to be Re-Used
6. Coastal Redwood Trees
7. West / East Project Area
8. Landmarks to be Preserved / Celebrated
9. *Sentinel Grove*
10. **Overall Site Plan**

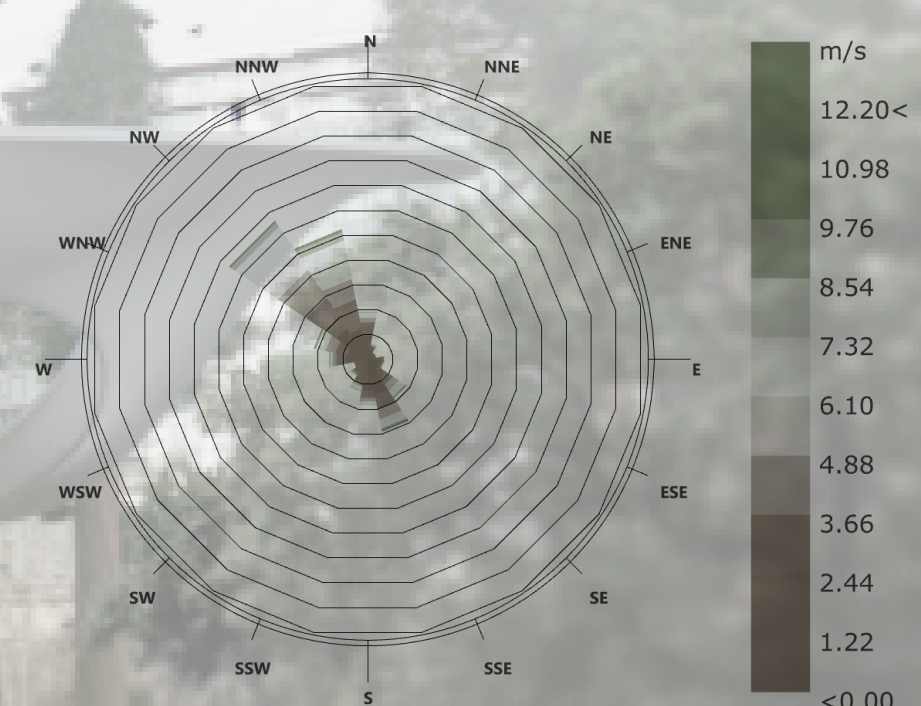


Psychrometric Data



Wind-Rose  
San Jose Intl AP\_CA\_USA  
1 JAN 1:00 - 31 DEC 24:00  
Hourly Data: Dry Bulb Temperature (C)  
Calm for 9.34% of the time = 818 hours.  
Each closed polyline shows frequency of 3.0% = 262 hours.

Dry-Bulb Temperature



Wind-Rose  
San Jose Intl AP\_CA\_USA  
1 JAN 1:00 - 31 DEC 24:00  
Hourly Data: Wind Speed (m/s)  
Calm for 9.34% of the time = 818 hours.  
Each closed polyline shows frequency of 3.0% = 262 hours.

Wind Speed and Direction