

THE CONFLUENCE ARCH
Urban Confluence Silicon Valley - San Jose



THE LIVING RIVERS

Our proposal for Urban Confluence, for Silicon Valley and for San Jose is a living representation of the vibrancy and vitality of the ecology-city-culture biosphere that encompasses Arena Green, San Jose, and the entire Caltrain Corridor.

We have taken our inspiration directly from the confluence of Los Gatos Creek and the Guadalupe River: from their unique delta form; from how they flow though the city, bringing life and colour and diversity with them. Deeper than this, they represent the importance of the confluence, to ourselves and our communities. We think of how the rivers have attracted settlers since the first human feet touched California's soil. How we have gravitated to their banks to live and to settle. To take fresh water, to bathe, to fish, to irrigate and cultivate. And further, how we transitioned from being nomads, to diverse cultural settlers with the power to create environments. How we created San Jose around the rivers; making the spaces that contain us. Creating realities that enter into symbiosis with their natural surrounds.

This proposal is a song to sustainability, diversity and community in San Jose; to the ecosystems that sustain and support us. An explosion of kinesis and colour.

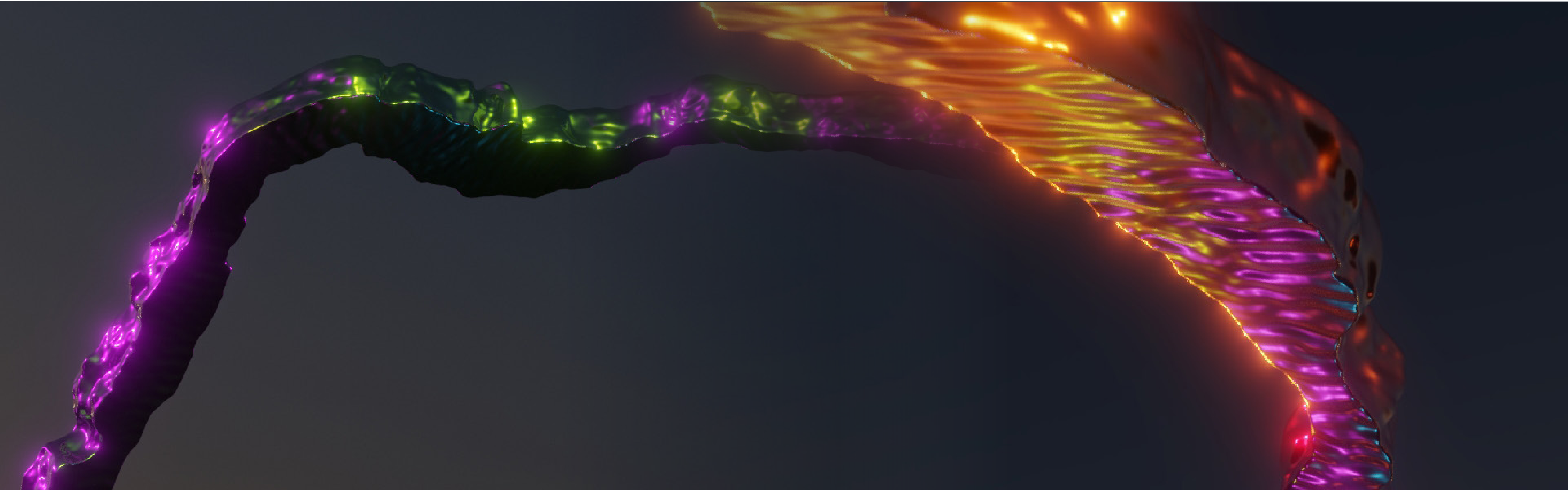
And so, we have modelled the actual forms of creek and river into a soaring design. Inspired also in the geology of the Caltrain Corridor as it extends from San Jose to San Francisco Bay, we have envisaged this all in a stunning delta-arch, of flowing, coruscating steel. A gateway. A confluence of waters and peoples. A unique, iconic portal through which we will discover and explore our surrounds. A piece to fascinate, dazzle and intrigue... to bring us together in the heart of San Jose, in symbiosis, now, and far into the future.

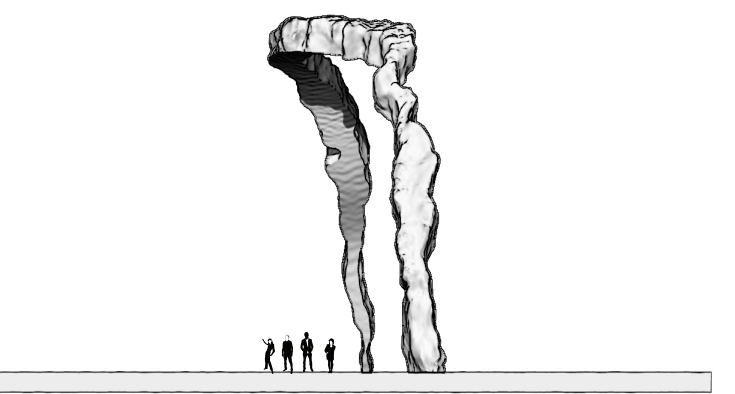
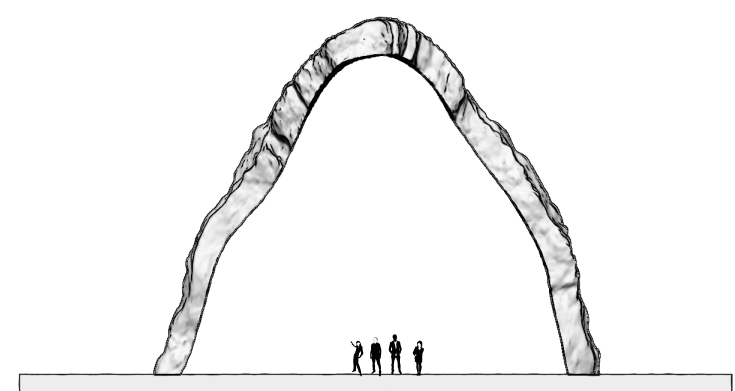
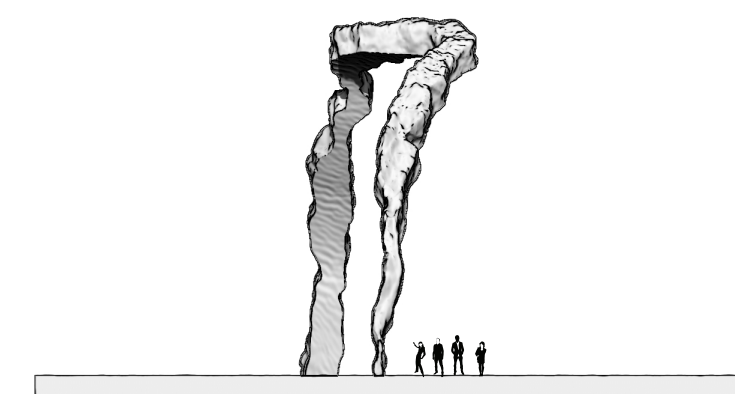
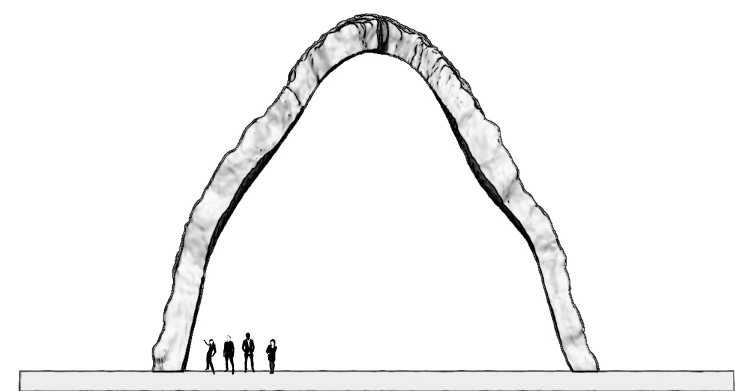
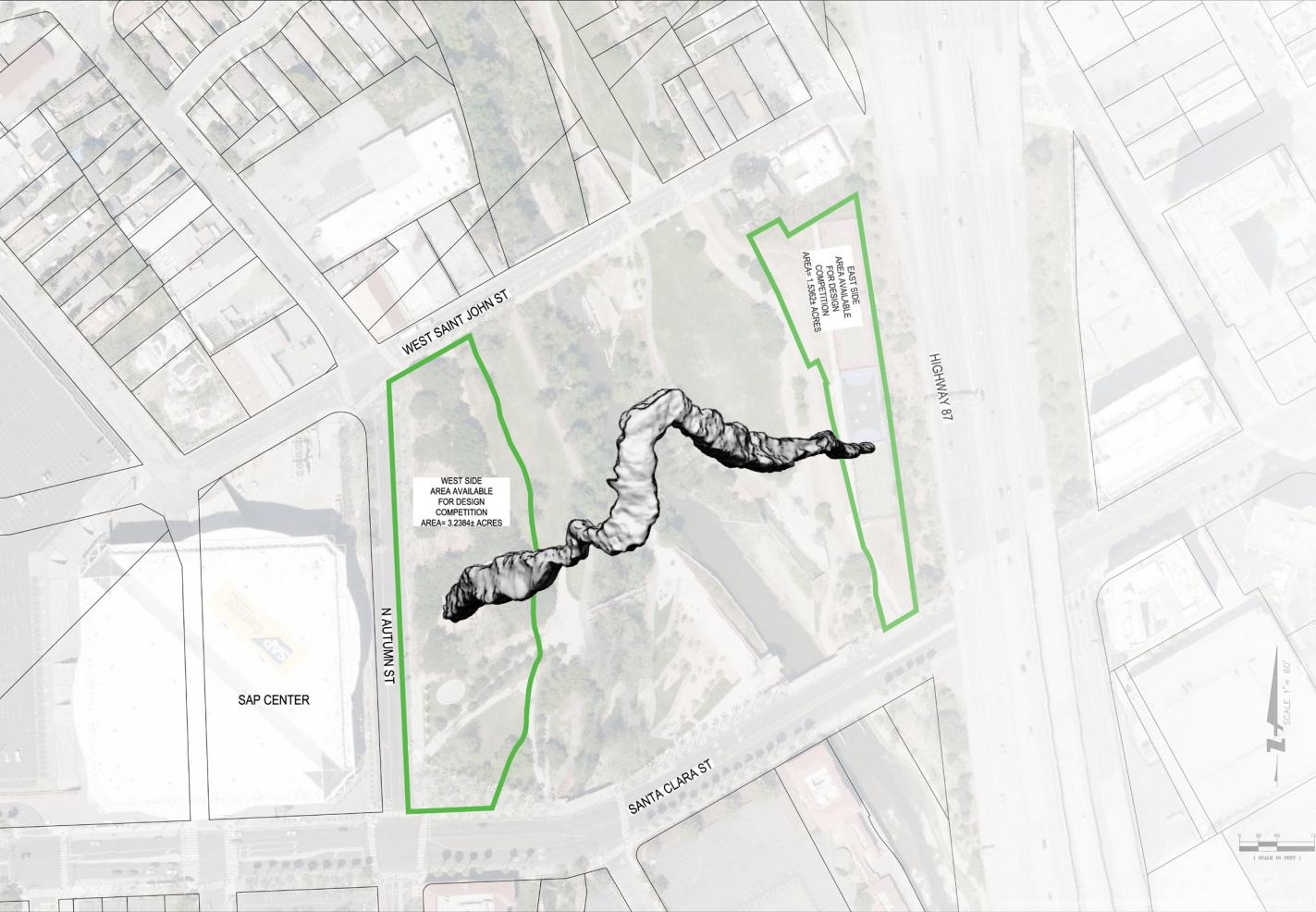
The Confluence Arch has been specifically designed to be able to bridge the installation spaces on each side of the confluence at Arena Green, reaching over creek and river and uniting both banks. If produced on an architectural scale, the piece will be able to function as a bridge and viewing platform. Transparent floors through which to see the river with a bird's eye view. Galleries to observe the changing light of the skyline. And from without, the piece will be a rainbow of colour and light; carefully controlled so as to respect aviation and ecological regulations, but living; changing, growing, like San Jose itself.



They listened silently to the water,
Which to them was not just water, but the voice of life,
The voice of Being, the voice of perpetual Becoming..."

Herman Hesse | Siddhartha





Bridging both construction zones, and reaching over river and creek, the Confluence Arch could be fabricated on a truly iconic scale.

If made to these specifications, it could be architecturally designed to contain interior spaces and viewing galleries. A transparent-floored chamber, with open views down to the park and rivers below for a birds eye view of the nature that surrounds us.... open galleries that will allow us to look out over San Jose and marvel at the confluence of ecology-city-humanity...

The design's lighting and reflective qualities can be established in line with both aviation and ecological requirements as set out in the guiding reports on these factors.

We present examples of high-powered illumination here, but the wattage of any lighting and the reflectiveness of the steel that conforms the arch would be carefully designed and specified so as not to affect either aeroplanes or local species.

