



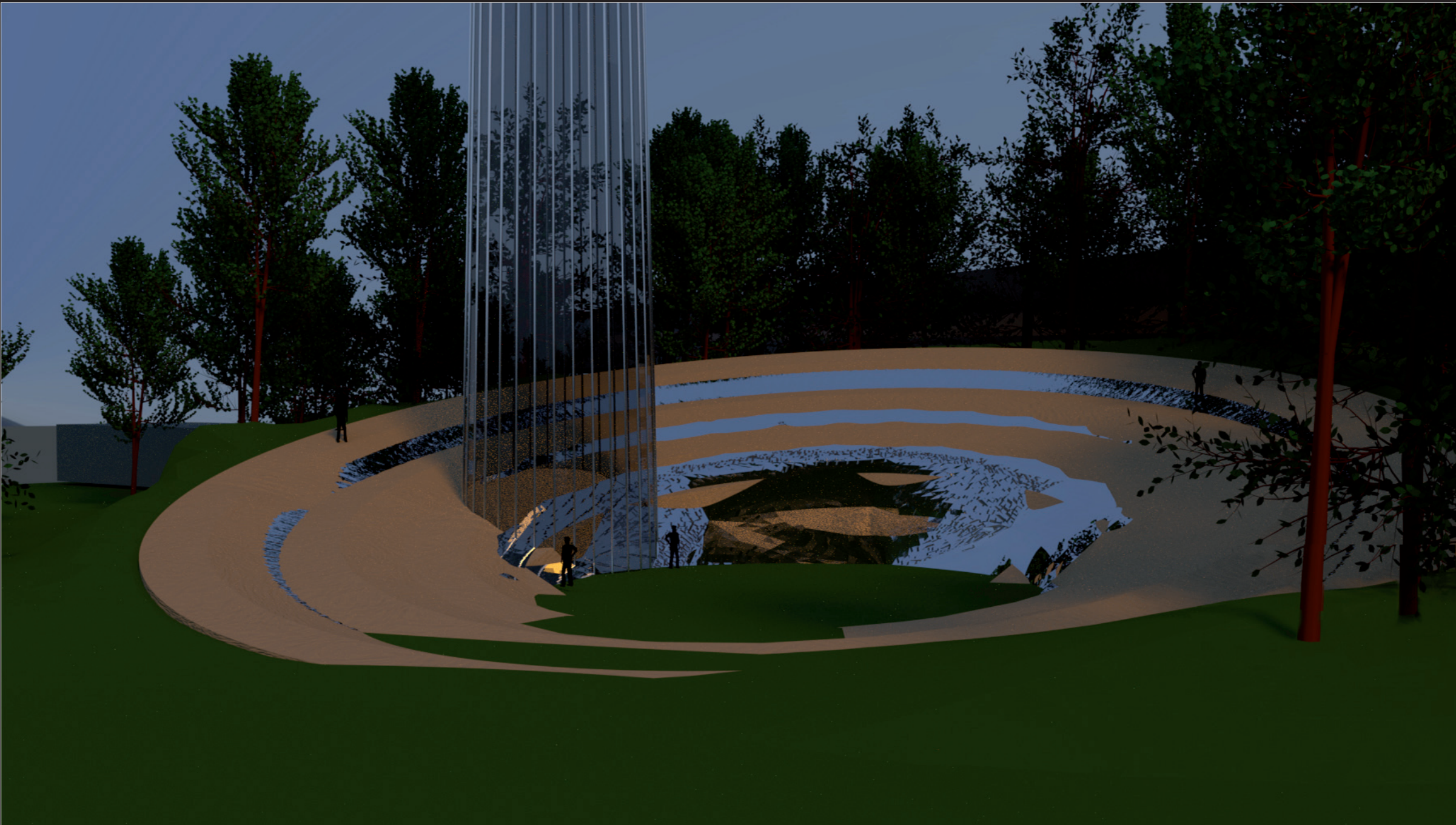
artist impression view from Highway 86 day



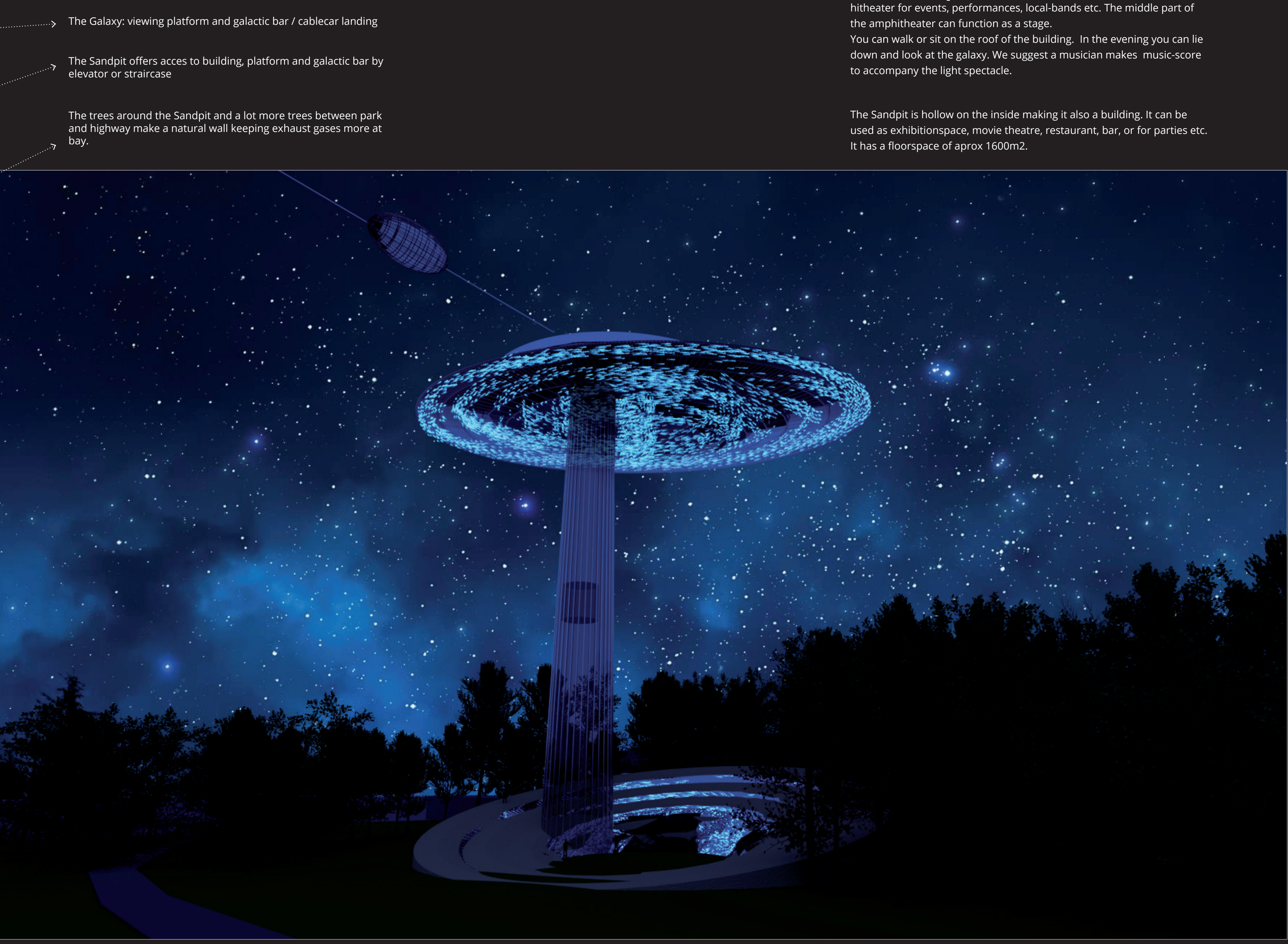
artist impression view from Highway 86 at night, see also animation



artist impression: view from the bike trail towards The Galaxy and The Sandpit.



artist impression: walk on the roof of The Sandpit.



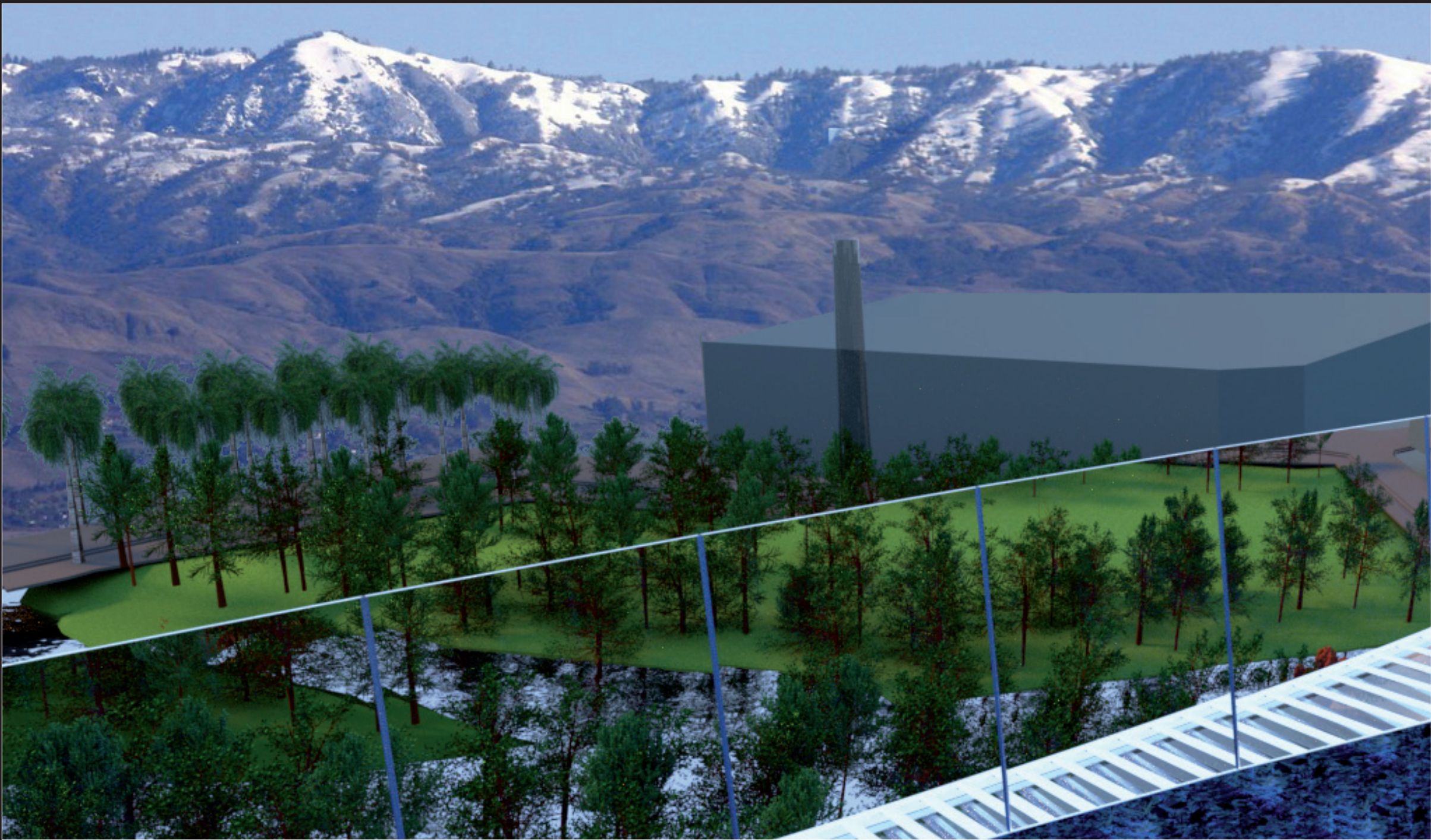
artist impression of The Galaxy and the Sandpit at night.

**The galaxy** is a lightweight transparent structure which is placed off centre and at an angle to the platform. It has lots of led-lights that, when it's dark, will have program that simulates a slowly moving galaxy. (see animation) The galaxy is shaped after our own milky-way. The colours will be mainly blues and greens. The floor of the platform is halfway inside and halfway outside the galaxy dome, as if it's ready to depart. The complete floor of the observation-deck is solar-panel you can walk on. During the day enough energy will be produced to make the lights shine after dark.

**The Sandpit:** The outside roof area can function as an amphitheater for events, performances, local-bands etc. The middle part of the amphitheater can function as a stage. You can walk or sit on the roof of the building. In the evening you can lie down and look at the galaxy. We suggest a musician makes music-score to accompany the light spectacle.

The Sandpit is hollow on the inside making it also a building. It can be used as exhibitionspace, movie theatre, restaurant, bar, or for parties etc. It has a floorspace of aprox 1600m2.



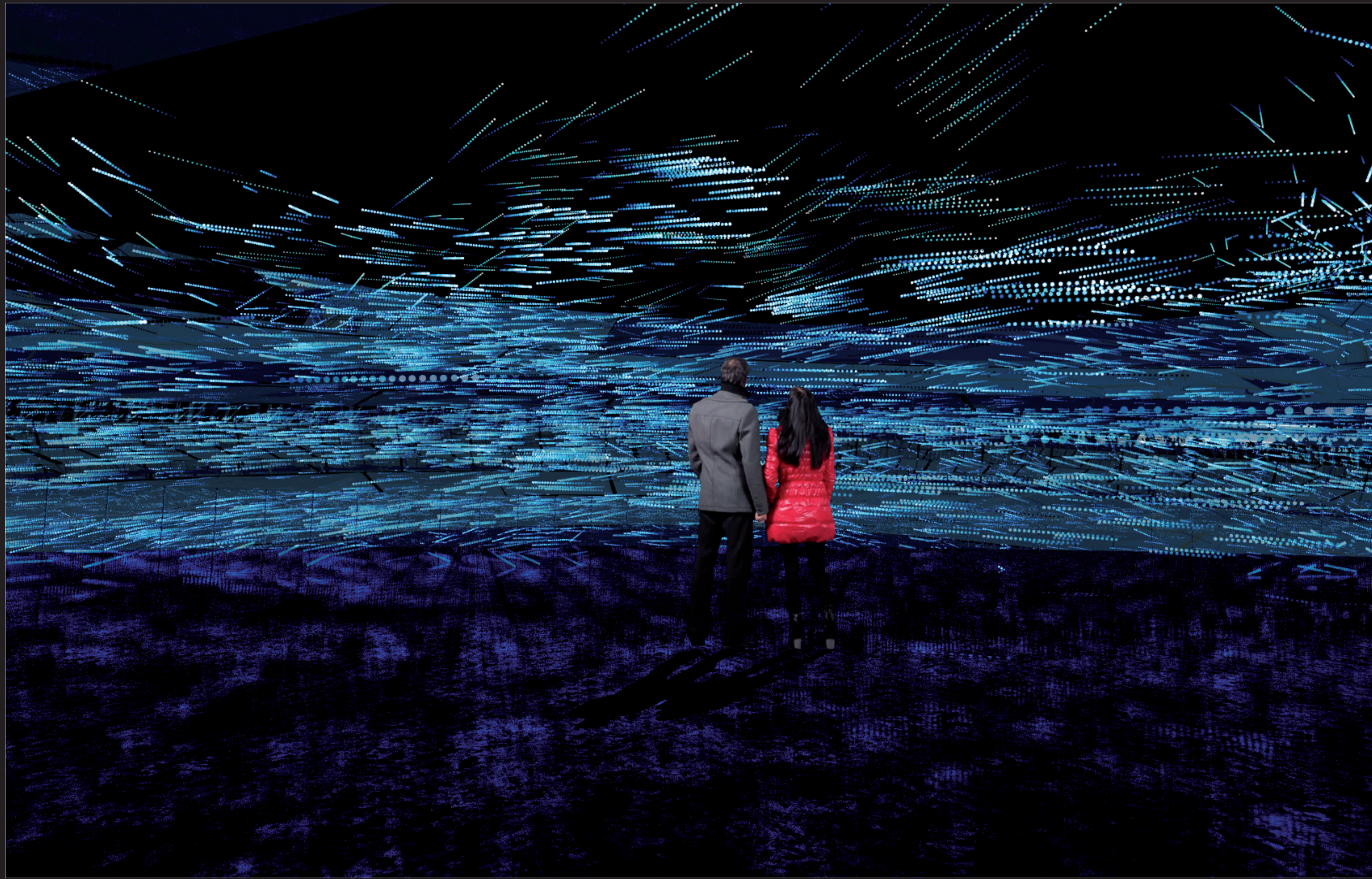


artist impression of the view from the galactic platform towards the SAP, the Space, the fruit and the Monte Bello Ridge

The galactic observer platform meets the wish of the local residents to have an area that provides views of the surrounding area. Here also the floor is solar-panel. Because the platform is at a height of 55 m one will have a stunning sundown view of the Monte Bello Ridge. You can also go inside the galaxy and enjoy the moving lights from within.



artist impression of the view towards the galactic platform from N Autumn ST

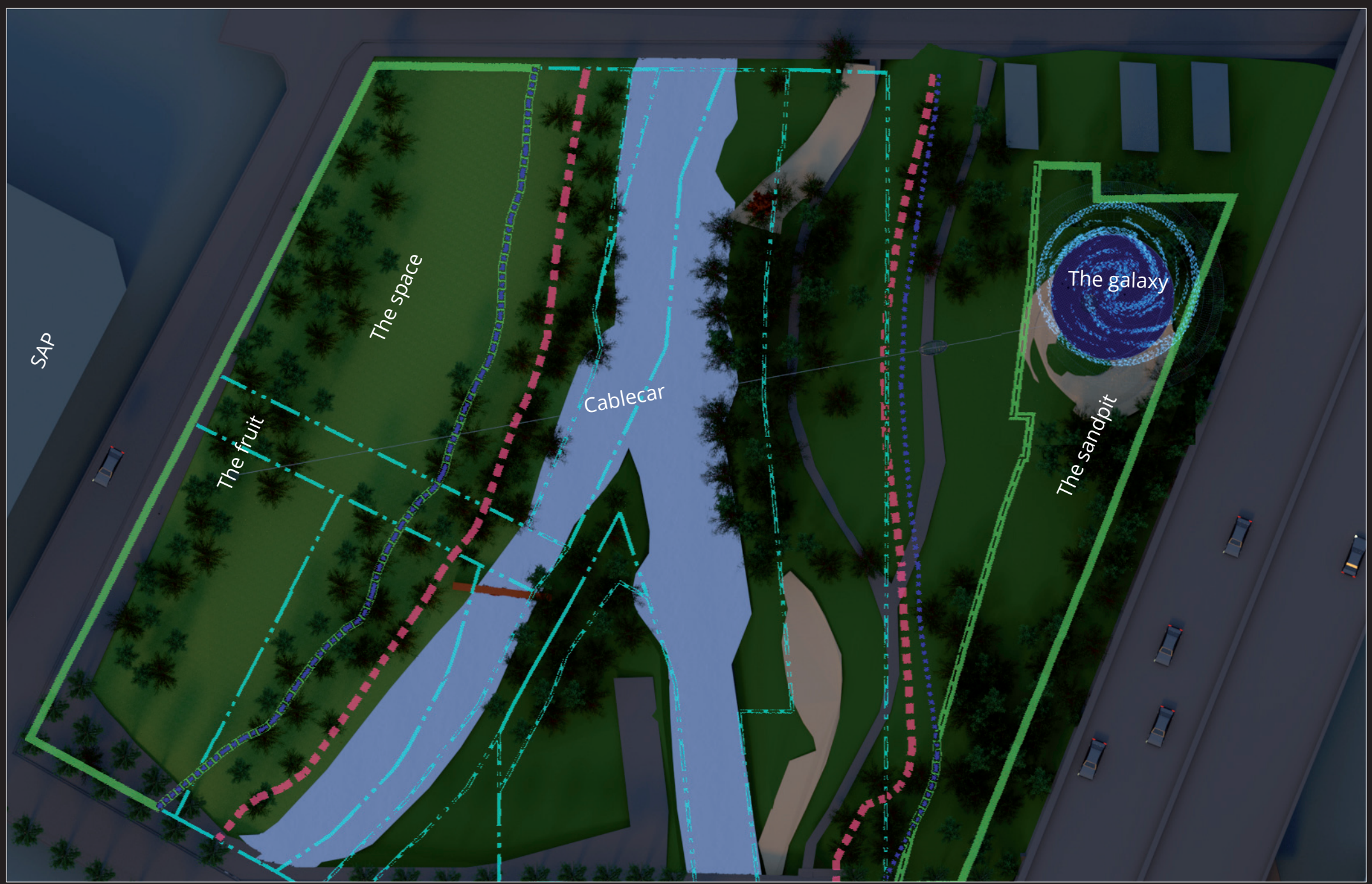


artist impression of the view inside the galactic bar



**The Space** The west side of Arena green is The Space there is room for several food-trucks. This could be an annual event or something more permanent like an openair food court. Here you can buy affordable healthy snacks, drinks or meals. These simple restaurants will have a view of the galaxy from afar and symbolise the humble beginning of most start-ups.

**The fruit,** will be next to the food-trucks. From the late 19th century the Santa Clara Valley was a major fruit growing area. Pears and apricots were grown but the Valley's specialty was a French plum. It produces about 30 percent of the prunes of the world. In the garden will be lots of fruit trees, in honour of this history. The people will be allowed to pick the fruit when ripe for free.



artist impression map of the terrain

