

PREPARATION

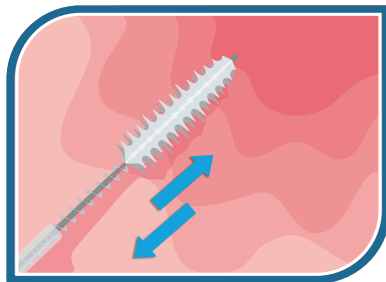
- Place testing components on a clean surface
- Activate handle several times to ensure it retracts and deploys properly

TESTING COMPONENTS



BRUSH 1

SAMPLE



- Advance the brush and place bristles against surface mucosa
- While maintaining firm pressure, repeatedly pass back and forth over the intended biopsy site

SPREAD



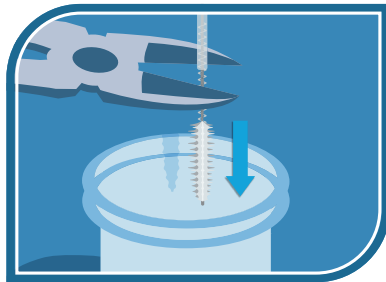
- **IMMEDIATELY** drag brush over slide, rotating as you drag
- Remain within bracketed area

FIX



- **IMMEDIATELY (within 5 seconds)** Squeeze fixative liquid over slide
- Set aside to dry

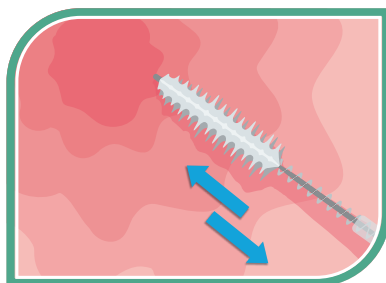
CLIP



- With the tip of the brush slightly inserted into the vial, use cutters to clip off the bristle portion of the brush and submerge in vial
- Discard remaining cable

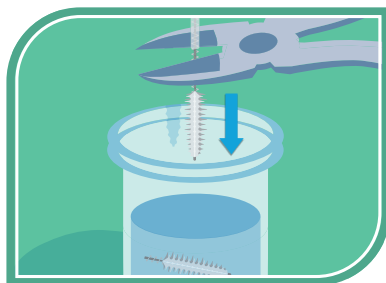
BRUSH 2

SAMPLE



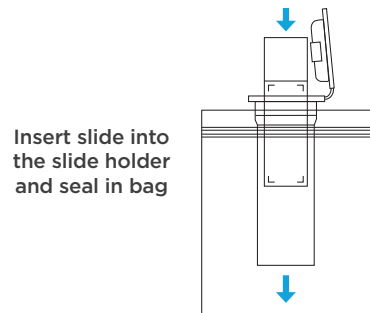
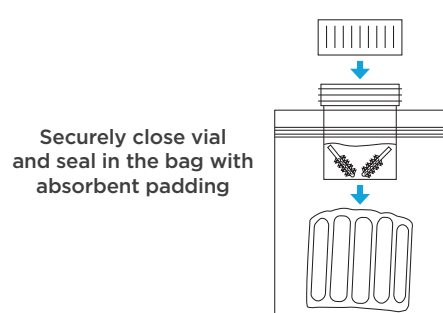
- Advance the brush and place bristles against surface mucosa
- While maintaining firm pressure, repeatedly pass back and forth over the intended biopsy site

CLIP

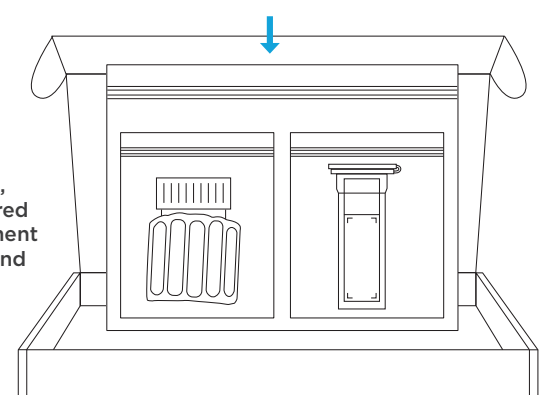


- Clip off the bristle portion of the brush and submerge in vial with other brush tip
- Replace cap and twist it closed tightly

PACKAGE



Pack the sealed bag, slide holder and required paperwork into a shipment bag and prepare to send to CDx Diagnostics



WATCH TRAINING VIDEOS HERE

For any questions, or to schedule in-service training
Call 845-777-7000

This poster is provided as a quick reference guide to supplement in-service training provided by CDx Diagnostics.
CDx Diagnostics 2020 GI_0110D 7.1.2020

