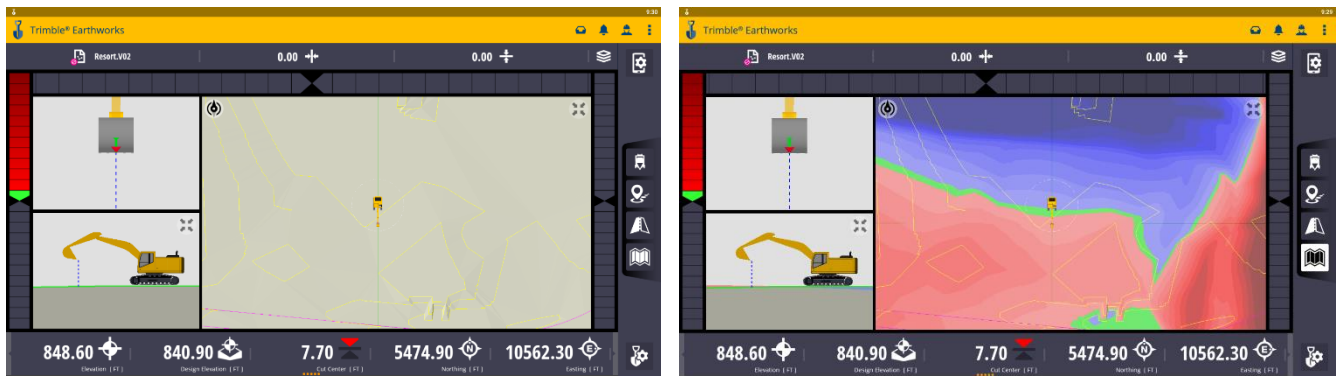



Trimble Earthworks – Advanced Mapping

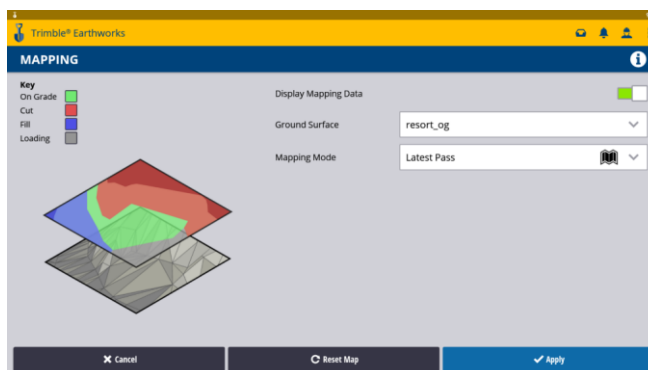
Advanced Mapping Features

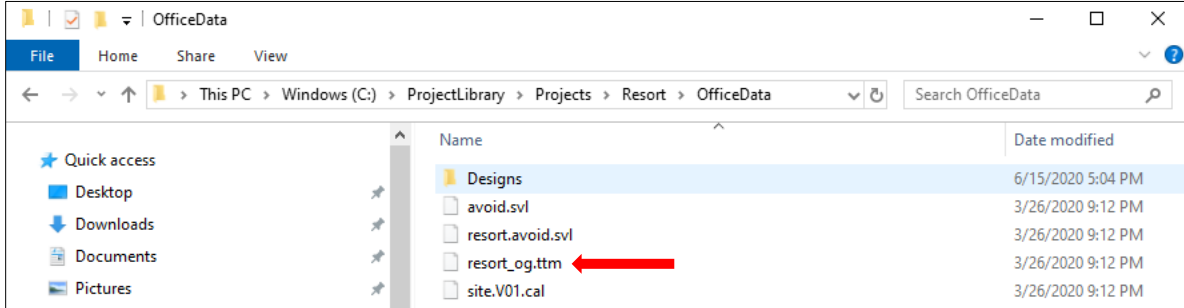
- Display the cut/fill differences between the recorded map data and the guidance surface.
- Display an initial map generated from the cut/fill differences between a pre-mapped surface, called a ground surface, and the guidance surface.
 - For example, if the ground surface is based on a survey of the original site, then the initial map could enable you to move dirt around the site more efficiently.
 - *Note – The ability to select a ground surface is a licensed feature. Contact your dealer for more information.*




Using Advanced Mapping

1. Press and hold the Map Icon to access the Map settings 
2. Toggle on the “Display Mapping Data” option
3. Load an original ground surface for your design
 - a. The original ground surface file needs to be saved as a .ttm (surface file) and saved to the “Office Data” folder within the “ProjectLibrary” folder on your USB. Once you import your project files to the Display, the original ground surface will be listed as a selectable surface in Earthworks.





4. Select the desired Mapping Mode from the drop down list
 - a. *Latest Pass* – displays map coverage based on last pass
 - b. *Minimum Elevation* – displays map coverage based on the lowest elevation that has been recorded
5. Click Apply
6. The Earthworks system will now log coverage as you work and update the map to reflect this. You can tap the Map Icon  to turn the coverage map information on or off.

