



Distributor Stock Program Canada

Q2 | 2020

**»» TOP SELLING
LIGHTING AND
CONTROLS
PRODUCTS**

**»» IN STOCK
SHIPS FAST**

**»» RISK-FREE
ENROLLMENT**



METALUX »



HALO »



LUMARK »



HALO OUTDOOR »



GREENGATE »



Canadian Terms and Conditions

Freight Terms:

Freight will be pre-paid on each order or partial release totaling \$1500 or more.

Orders not qualified for pre-paid freight will be shipped with transportation charges added to the invoice.

All shipments will be made via carrier selected by shipper.

Unless otherwise noted, sales of Cooper Lighting Products will be F.O.B. factory. Title to all products shall pass from Cooper Lighting to our customers upon execution of a bill of lading or tender of freight to carrier's agent or customer's agent, whichever shall first occur. When shipments of Cooper Lighting products are to be made via company truck, title to the products shall pass to our customers at time of delivery to the final destination or to the forwarding carrier. Consignee must make all claims for loss or damage in transit to carrier within 30 days.

Payment Terms:

Halo Recessed and Trac Products Only:

2% - 10th month following, net 25th

All Other Cooper Lighting Products:

1% - 10th month following, net 25th

Net 30 Days on Utility Sales

Dates are from date of invoice. Invoices are mailed within one (1) day of shipment.

Date of Shipment:

Shipping dates are approximate and are based on conditions existing at the time of Cooper Lighting's receipt of customer's firm order and full information. Cooper Lighting will in good faith endeavor to ship by the estimate shipping date but it shall not be responsible for any delay or any damage arising there from. It is agreed that time is not of the essence.

Merchandise and Claims Terms:

No merchandise may be returned without prior written authorization. This written authorization will be issued at the discretion of Cooper Lighting and must be requested by the customer within 90 days of the original shipment date. Non-defective materials must be in sealed original carton.

All returns will be subject to a minimum 25% handling and factory inspection charge, except on products considered by the manufacturer to be defective in workmanship and materials. Minimum value for return authorization is \$250.

Custom made equipment and "specials" may not be returned except for defects proven to be the manufacturer's responsibility.

Order Cancellation Terms:

Cancellation of orders will be accepted only if made in writing and received prior to shipment of order. Verbal order cancellations will not be accepted.

Custom made equipment and "specials" may not be cancelled after Release of Order.

Minimum Order Value:

There is a minimum order value of \$300.00.

Pricing:

Prices are subject to change without notice. Merchandise will be shipped at prices prevailing at time of shipment.

Conditions of Sale:

General:

Acceptance of any proposal submitted to Cooper Lighting Solutions for the sale of merchandise and acceptance by the buyer of any order it submits for such merchandise is expressly limited to the terms and conditions set forth herein. In the event of any conflict between the General Terms and Conditions of Sale of Cooper Lighting, and their terms and conditions contained in the customers order of response to quotation, the General Terms and Conditions of Sale of, Cooper Lighting shall prevail unless such variance is assented to in writing and signed by an authorized representative of Cooper Lighting. The customer will be deemed to have assented to the General Terms and Conditions of Sale set forth herein upon ordering merchandise quoted by Cooper Lighting.

Warranty and Obligations:

(i) Cooper Lighting warrants to the Purchaser for resale only that its products are free from defective materials and workmanship. Cooper Lighting's obligation is expressly limited to repair or replacement, at its option without charge, at Cooper Lighting's factory within a period of one year from the date of shipment unless otherwise stated and only after prior written return authorization has been granted.

This warranty does not apply to Cooper products which have been altered or repaired outside of Cooper's factory, or have been subject to neglect, abuse misuse or accident (including shipping damages). THIS WARRANTY SHALL ALSO NOT APPLY TO PRODUCTS NOT MANUFACTURED BY COOPER WHICH HAVE BEEN INSTALLED AND USED IN CONJUNCTION WITH COOPER PRODUCTS.

This warranty is in lieu of all other warranties, expressed or implied, and excludes any implied warranty of merchantability. There are no warranties, which extend beyond the description of the product on the Company's literature setting forth the conditions of sale.

(ii) Cooper Lighting shall repair or replace the product or refund the purchase price at its option, upon notification and confirmation by its local representative of the defect. The obligation of Cooper Lighting under this warranty and buyer's remedy is expressly limited to repair or replacement of the defective product whether the claim is made in tort or in contract; including claims based on warranty, negligence, strict liability, fraud, misrepresentation or otherwise.

Cooper Lighting shall not be responsible for material, labor or freight costs incurred in connection with the installation, removal or replacement of any products. In no event shall Cooper Lighting be liable for special, indirect, incidental or consequential damages (regardless of the form of action) whether in contract, strict liability or in tort, involving negligence) nor for lost profit.

(iii) Cooper Lighting does not accept any responsibility for failure, of any of the goods delivered hereunder to meet the standards imposed under the Occupational Safety Health Act 1970 as said standards now exists or as they may be hereinafter set or amended.

Management further reserves the right under special conditions to replace or repair defective products at their own discretion.

ALL TAXES EXTRA.

Satisfy your customer, and your bottom line.

We know you want the best for your customers. With MarketPro, you'll not only get fast delivery and returns on the products your customers demand, we'll give you valuable tools and resources to keep products flowing on and off your shelves more efficiently than ever.

- ✓ **Stay current and competitive**
- ✓ **Risk-free to join MarketPro**
- ✓ **Top products to help you accelerate your stock growth**

Your favorite brands are all in stock and ready to ship to your location, helping you meet your customers' needs, helping them get off the job faster, saving time and money.



Markets we serve



RESIDENTIAL



COMMERCIAL



INDUSTRIAL

All of your favorite brands

Halo Metalux Lumark

Halo Outdoor Greengate

MARKETPRO™ DISTRIBUTOR PROGRAM*

The program is completely risk-free – nothing to lose and a whole lot to gain.

Program benefits:



Proven bestsellers

Top products, ready to ship

In-stock lighting and control products that contractors love.



2-days (or less) order-to-ship

Quick turn service

We know your time is valuable. With MarketPro, you can count on easy ordering and fast shipments.



Guaranteed returns

Order with confidence

FREE returns for one year from purchase and our no-risk guarantee.



Loyalty Incentives

Meet your growth plan

We appreciate your partnership and want to help you keep growing. We offer financial incentives to support your growth.



Utility Incentives

Help customers take advantage of local rebates

We're making code compliance easy with our online incentive finder. Find products that qualify for ENERGY STAR®, DLC®, and more. Save money and add value for your customers.

*Visit Eaton.com/MarketPro to learn more about the program benefits.



Marketing resources:



Sample Before You Buy Test new products, risk-free

Put new products to the test, risk-free for 90 days, through our Light Ahead program. If it doesn't meet your standards, simply return it.



Exclusive Promotions Tools and Incentives

As a MarketPro member, you'll gain access to special promotional offers designed to grow your distributor stock business.



Merchandising & Rewards Product Displays and Signage

Increase product demand and sales with interactive merchandising displays showcasing the latest in lighting and controls technology.



Where to Buy Leads Exclusively promote your branch

As a member of our MarketPro community, you'll be listed in our "Where to Buy" directory on our website.



Digital Library Custom sales collateral, in minutes

Download the digital catalog, MSRP price books, product selection guides and build custom SKU lists.



Training & Videos E-Learning and live training

Expand your lighting and control knowledge. Take courses online or in person at our SOURCE Lighting Education Center.



Service Capabilities

Get what you need **when you need it.***

MARKETPRO™

Distributor Stock Program



MarketPro products are in stock and available for 2-day (or less) shipment.

Rapid Response

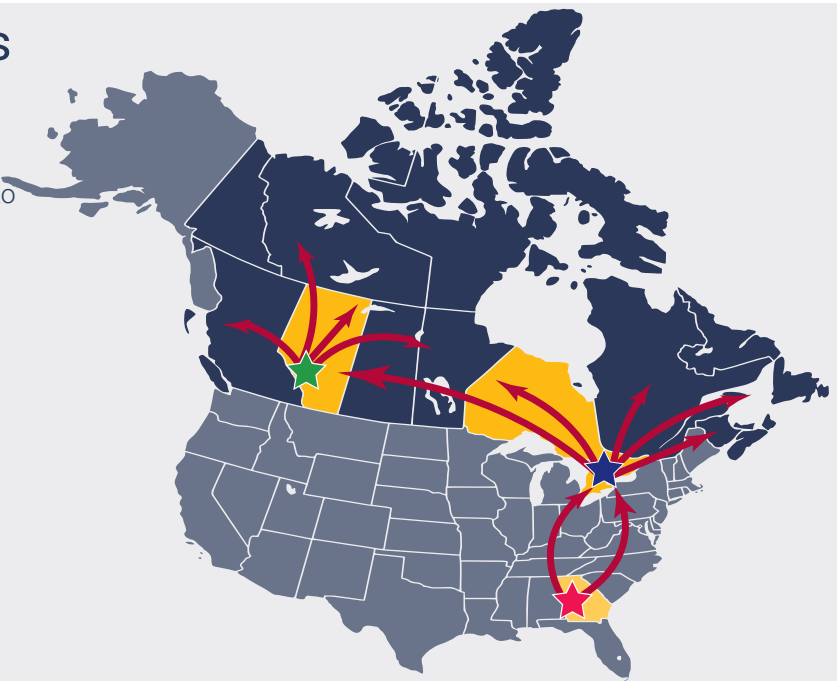


The Rapid Response program is ideal to fill small projects with customizable Metalux products that ship in 10-working days (or less). See page 61 for program details.

Our distribution centers

With 3 state-of-the-art distribution centers across Canada and the U.S. and top-notch customer support, we've made it a priority to get products onto your shelves easily.

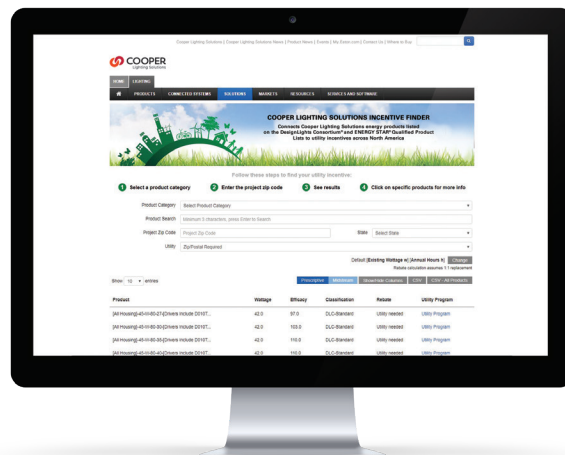
- ★ Mississauga-Ontario
- ★ Peachtree City, Georgia-USA
- ★ Calgary-Alberta



Code Compliance

Code compliance **made simple.***

Cooper Lighting Solutions has the largest portfolio of qualified, recessed downlights by **ENERGY STAR®** and commercial luminaires by the **DLC®**. Use the Incentive Finder to search by province and postal code.



Cooper Lighting Solutions simplifies the compliance search by providing the **DLC®** and **ENERGY STAR®** Product ID codes helping you navigate utility energy incentives.



Use the DLC Product ID to search directly at [Designlights.org/Search/](https://www.designlights.org/Search/)

Catalog Number	Product Description	Replaces	CCT	Voltage	Lumens	Watts	Case QTY	Pallet QTY	ON	AB	PT	UPC	DLC
AXCL8A	Large Full Cutoff	400W HID	4000K	9,696	72	120-277V	2	45	Yes	No	Yes	080083811588	PG4TJNY3

*For more compliance, certifications and award information, visit [Eaton.com/MarketPro](https://www.eaton.com/MarketPro)

Selectable Solutions



Selectable lumens

We're taking the guesswork out of lighting with all-in-one product solutions with selectable lumen fixtures.

Metalux



HALO Recessed



HALO Commercial



- Provides on the job flexibility at your fingertips
- Selectable brightness allows for ultimate flexibility

Look for the **Selectable Lumens** symbol in the Metalux, HALO Recessed and HALO Commercial sections of the catalog.



Selectable colours

2700K • 3000K • 3500K • 4000K • 5000K

Metalux



HALO Recessed



HALO Outdoor



- Adjust colour temperature with the flip of a switch
- With HALO Home smart lighting fixtures, colour temperature can also be adjusted from your smart device within the app
- Choose from a range of colour temperatures and set the perfect scene

Look for the **Selectable Colours** symbol in the Metalux, HALO Recessed and HALO Outdoor sections of the catalog.

eCommerce Solutions

The MarketPro website makes eCommerce product setup easy!



Search & Build

Browse top-selling products by category, brand, features and more. Then build customized product recommendation lists to share with customers.



Pricing

Download our pricing guide to have the latest MSRP prices at your fingertips!



Download

Easily download spec sheets, images, and other assets needed to close the sale.



Access the digital catalog at
Eaton.com/MarketPro

Catalog contents:

11

Ambient Commercial
Metalux

21

Ambient Industrial
Metalux

28

Smart Lighting System
HALO Home

32

Recessed Residential
HALO

43

Recessed Commercial
HALO

47

Track Lighting
HALO Track and Surface

50

Outdoor
HALO Outdoor, Lumark

56

Controls
Greengate

61

Rapid Response Program
Metalux

Ambient

Metalux

Commercial, Residential & Industrial

Troffer • Strip • Wrap



Troffer



Strip



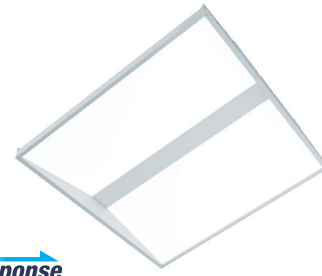
Wrap



Encounter LED Series

Metalux

The Encounter™ Series redefines ambient lighting by blending contemporary styling with Cooper Lighting Solutions' proprietary WaveStream™ technology. It delivers optimal light uniformity, resulting in soft, natural light for superior visual comfort. Encounter is a perfect balance of form and function, making it an ideal choice for commercial interiors.



Rapid Response



Catalog Number	Product Description	Replaces	CCT	Voltage	Lumens	Watts	Case QTY	Pallet QTY	ON	AB	PT	UPC	DLC
22EN-LD2-34-UNV-L835-CD1-U	LED, 2'x2' Encounter, WaveStream, 3400 Lumens, 85 CRI, 3500K, UNV 0-10V Dimming Driver	3-T8, 2-T5HO	3500K	120V/277V	3471	29	1	40	Yes	Yes	Yes	080083752324	PUJB4JAKE
24EN-LD2-45-UNV-L835-CD1-U	LED, 2'x4' Encounter, WaveStream, 4500 Lumens, 85 CRI, 3500K, UNV 0-10V Dimming Driver	2-T8 32W, 3-T8 32W	3500K	120V/277V	4656	38	1	18	Yes	No	Yes	080083752225	PYDG9S8N
24EN-LD2-45-UNV-L840-CD1-U	LED, 2'x4' Encounter, WaveStream, 4500 Lumens, 85 CRI, 4000K, UNV 0-10V Dimming Driver	2-T8 32W, 3-T8 32W	4000K	120V/277V	4748	38	1	20	Yes	Yes	Yes	080083752218	PUGD2UQG

SkyRidge LED Series

Metalux

The SkyRidge™ Series offers an aesthetically pleasing, yet affordable LED alternative to fluorescent fixtures. Patented WaveStream™ technology provides unmatched optical performance, efficiency and unique visual style. SkyRidge delivers a distinct blend of technology and beauty, making it the natural choice for today's commercial environments.



Catalog Number	Product Description	Replaces	CCT	Voltage	Lumens	Watts	Case QTY	Pallet QTY	ON	AB	PT	UPC	DLC
24SR-LD2-48-C-UNV-L835-CD1-U	LED, 2'x4' SkyRidge, WaveStream, 4800 Lumens, 85 CRI, 3500K, UNV 0-10V Dimming Driver, Curved	2-T8 32W, 2-T5 54W	3500K	120V/277V	4805	38	1	16	Yes	No	Yes	080083752492	P6V4CWNY

FPS LED Panel Series

Metalux

The FPS LED Series provides the high performance and aesthetic appeal of a flat panel while also providing the flexibility to adapt to the changing needs of the space, setting, or environment. A selectable switch comes standard with three selectable lumen levels and three selectable color temperatures. The low-profile design is ideal for shallow plenum grid ceilings or surface mounting. The integrated grid clips enable installation speed and flexibility. FPS is an excellent lighting solution for commercial office spaces, schools, healthcare and retail merchandising areas.

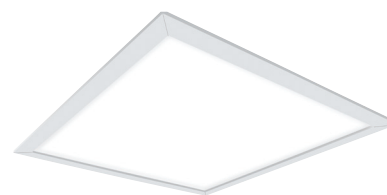


Catalog Number	Product Description	Replaces	Selectable CCT	Voltage	Selectable Lumens	Watts	Case QTY	Pallet QTY	ON	AB	PT	UPC
14FPS1SCT3	1x4 LED Flat Panel with Selectable Lumens and CCT with 0-10V Dimming Driver	2-T8 32W, 3-T8 32W	3000K/3500K/4000K	120/277V	2000-4000	18.7-36.3	1	42	Yes	No	Yes	080083889440
22FPS2SCT3	2x2 LED Flat Panel with Selectable Lumens and CCT with 0-10V Dimming Driver	3-U6T8	3000K/3500K/4000K	120/277V	1800-3400	16-30.4	1	40	Yes	No	Yes	080083889402
24FPS2SCT3	2x4 LED Flat Panel with Selectable Lumens and CCT with 0-10V Dimming Driver	2-T8 32W, 3-T8 32W	3000K/3500K/4000K	120/277V	3400-6500	30.2-60.5	1	20	Yes	No	Yes	080083889365

CGT LED Panel Series

Metalux

The CGT Panel LED series is the Contractor Go-To panel providing customers an affordable panel that fits in shallow plenums with room to spare. Acrylic micro optics provide uniform illumination from corner to corner. It's back-lit, durable design provides immediate opportunities to replace fluorescent fixtures with LED. CGT is an excellent lighting solution for commercial office spaces, schools, healthcare and retail merchandising areas.



Catalog Number	Product Description	Replaces	CCT	Voltage	Lumens	Watts	Case QTY	Pallet QTY	ON	AB	PT	UPC	DLC
14CGT4035C	1x4 CGT Backlit LED Panel, 4000 Lumens, 3500K, UNV, 0-10V	2-T8 32W, 3-T8 32W	3500K	120/277V	4000	39.4/38.8	1	54	Yes	No	Yes	080083879526	PB10HJKT
14CGT4035C-347	1x4 CGT Backlit LED Panel, 4000 Lumens, 3500K, 347V, 0-10V	2-T8 32W, 3-T8 32W	3500K	347V	4000		1	54	Yes	No	No	080083880249	PB10HJKT
14CGT4040C	1x4 CGT Backlit LED Panel, 4000 Lumens, 4000K, UNV, 0-10V	2-T8 32W, 3-T8 32W	4000K	120/277V	4000	39.4/38.8	1	54	Yes	No	Yes	080083879540	PGNH8KOZ
14CGT4040C-347	1x4 CGT Backlit LED Panel, 4000 Lumens, 4000K, 347V, 0-10V	2-T8 32W, 3-T8 32W	4000K	347V	4000		1	54	Yes	No	No	080083880263	PGNH8KOZ
14CGT4050C	1x4 CGT Backlit LED Panel, 4000 Lumens, 5000K, UNV, 0-10V	2-T8 32W, 3-T8 32W	5000K	120/277V	4000	39.4/38.8	1	54	Yes	No	Yes	080083879861	P8MR6G0G
14CGT4050C-347	1x4 CGT Backlit LED Panel, 4000 Lumens, 5000K, 347V, 0-10V	2-T8 32W, 3-T8 32W	5000K	347V	4000		1	54	Yes	No	No	080083880287	P8MR6G0G
22CGT3535C	2x2 CGT Backlit LED Panel, 3500 Lumens, 3500K, UNV, 0-10V	3-U6T8	3500K	120/277V	3500	31.4/31.7	1	72	Yes	No	Yes	080083880003	P6WE1HNZ
22CGT3535C-347	2x2 CGT Backlit LED Panel, 3500 Lumens, 3500K, 347V, 0-10V	3-U6T8	3500K	347V	3500		1	72	Yes	No	No	080083880409	P6WE1HNZ
22CGT3540C	2x2 CGT Backlit LED Panel, 3500 Lumens, 4000K, UNV, 0-10V	3-U6T8	4000K	120/277V	3500	31.4/31.7	1	72	Yes	No	Yes	080083880027	P0YGNM7S
22CGT3540C-347	2x2 CGT Backlit LED Panel, 3500 Lumens, 4000K, 347V, 0-10V	3-U6T8	4000K	347V	3500		1	72	Yes	No	No	080083880423	P0YGNM7S
22CGT3550C	2x2 CGT Backlit LED Panel, 3500 Lumens, 5000K, UNV, 0-10V	3-U6T8	5000K	120/277V	3500	31.4/31.7	1	72	Yes	No	Yes	080083880041	PR337DAA
22CGT3550C-347	2x2 CGT Backlit LED Panel, 3500 Lumens, 5000K, 347V, 0-10V	3-U6T8	5000K	347V	3500		1	72	Yes	No	No	080083880454	PR337DAA
24CGT4535C	2x4 CGT Backlit LED Panel, 4500 Lumens, 3500K, UNV, 0-10V	2-T8 32W, 3-T8 32W	3500K	120/277V	4500	38.8/38	1	36	Yes	No	Yes	080083880089	P28JP113
24CGT4535C-347	2x4 CGT Backlit LED Panel, 4500 Lumens, 3500K, 347V, 0-10V	2-T8 32W, 3-T8 32W	3500K	347V	4500		1	36	Yes	No	No	080083880492	P28JP113
24CGT4540C	2x4 CGT Backlit LED Panel, 4500 Lumens, 4000K, UNV, 0-10V	2-T8 32W, 3-T8 32W	4000K	120/277V	4500	38.8/38	1	36	Yes	No	Yes	080083880102	PLTEVMIJ
24CGT4540C-347	2x4 CGT Backlit LED Panel, 4500 Lumens, 4000K, 347V, 0-10V	2-T8 32W, 3-T8 32W	4000K	347V	4500		1	36	Yes	No	No	080083880515	PLTEVMIJ
24CGT4550C	2x4 CGT Backlit LED Panel, 4500 Lumens, 5000K, UNV, 0-10V	2-T8 32W, 3-T8 32W	5000K	120/277V	4500	38.8/38	1	36	Yes	No	Yes	080083880126	P8BJLKN
24CGT4550C-347	2x4 CGT Backlit LED Panel, 4500 Lumens, 5000K, 347V, 0-10V	2-T8 32W, 3-T8 32W	5000K	347V	4500		1	36	Yes	No	No	080083880539	P8BJLKN
24CGT5535C	2x4 CGT Backlit LED Panel, 5500 Lumens, 3500K, UNV, 0-10V	2-T8 32W, 3-T8 32W	3500K	120/277V	5500	46.8/46.4	1	36	Yes	No	Yes	080083880164	PGQBAT0L
24CGT5535C-347	2x4 CGT Backlit LED Panel, 5500 Lumens, 3500K, 347V, 0-10V	2-T8 32W, 3-T8 32W	3500K	347V	5500		1	36	Yes	No	No	080083880577	PGQBAT0L
24CGT5540C	2x4 CGT Backlit LED Panel, 5500 Lumens, 4000K, UNV, 0-10V	2-T8 32W, 3-T8 32W	4000K	120/277V	5500	46.8/46.4	1	36	Yes	No	Yes	080083880188	P5F04P82
24CGT5540C-347	2x4 CGT Backlit LED Panel, 5500 Lumens, 4000K, 347V, 0-10V	2-T8 32W, 3-T8 32W	4000K	347V	5500		1	36	Yes	No	No	080083880591	P5F04P82
24CGT5550C	2x4 CGT Backlit LED Panel, 5500 Lumens, 5000K, UNV, 0-10V	2-T8 32W, 3-T8 32W	5000K	120/277V	5500	46.8/46.4	1	36	Yes	No	Yes	080083880201	PONJ4W10
24CGT5550C-347	2x4 CGT Backlit LED Panel, 5500 Lumens, 5000K, 347V, 0-10V	2-T8 32W, 3-T8 32W	5000K	347V	5500		1	36	Yes	No	No	080083880614	PONJ4W10

CGT LED Panel Accessories

Catalog Number	Product Description	Case QTY	Pallet QTY	ON	AB	PT	UPC
CGTEQ	EQ Clip Kit for CGT Troffer	75	3750	Yes	No	Yes	080083083084
CGTSURF14	1x4 CGT Surface Mount Kit	6	150	Yes	No	Yes	080083083145
CGTSURF22	2X2 CGT Surface Mount Kit	6	300	Yes	No	Yes	080083083121
CGTSURF24	2X4 CGT Surface Mount Kit	6	150	Yes	No	Yes	080083083107

Cruze ST Recessed LED Series

Metalux

The Cruze™ ST LED series combines latch-less design, matte white paint after fabrication and frosted acrylic lens to deliver architectural appeal at unmatched price. Cruze ST offers premium finishes and clean lines making it an ideal choice for commercial office spaces, schools, hospitals, and retail merchandising areas.



Catalog Number	Product Description	Replaces	CCT	Voltage	Lumens	Watts	Case QTY	Pallet QTY	ON	AB	PT	UPC	DLC
14CZ2-39-UNV-L835-CD1-U	1x4 LED Troffer, 3900 lumens, 3500K, 80 CRI (min), 0-10V Dimming Driver	2-T8 32W	3500K	120V/277V	3545	31.2	1	32	Yes	No	Yes	080083151103	P5SV2P3V
14CZ2-39-UNV-L840-CD1-U	1x4 LED Troffer, 3900 lumens, 4000K, 80 CRI (min), 0-10V Dimming Driver	2-T8 32W	4000K	120V/277V	3545	31.2	1	32	Yes	No	Yes	080083147335	P7AAZ6F3
22CZ2-39-UNV-L835-CD1-U	2x2 LED Troffer, 3900 lumens, 3500K, 80 CRI (min), 0-10V Dimming Driver	3-T8, 2-T5HO	3500K	120V/277V	3943	34.5	1	48	Yes	No	Yes	080083881284	PESUXLAR
22CZ2-39-UNV-L840-CD1-U	2x2 LED Troffer, 3900 lumens, 4000K, 80 CRI (min), 0-10V Dimming Driver	3-T8, 2-T5HO	4000K	120V/277V	3943	34.5	1	48	Yes	No	Yes	080083881307	P1WZS0K1
22CZ2-44-UNV-L835-CD1-U	2x2 LED Troffer, 4400 lumens, 3500K, 80 CRI (min), 0-10V Dimming Driver	3-U6T8	3500K	120V/277V	4424	42.7	1	48	Yes	No	Yes	080083881321	PRAAL0QI
22CZ2-44-UNV-L840-CD1-U	2x2 LED Troffer, 4400 lumens, 4000K, 80 CRI (min), 0-10V Dimming Driver	3-U6T8	4000K	120V/277V	4424	42.7	1	48	Yes	No	Yes	080083881345	PKWC1G2R
24CZ2-50-UNV-L835-CD1-U	2x4 LED Troffer, 5000 lumens, 3500K, 80 CRI (min), 0-10V Dimming Driver	2-T8 32W, 2-T5 54W	3500K	120V/277V	5015	48.6	1	26	Yes	No	Yes	080083881628	POK3FN8Z
24CZ2-50-UNV-L840-CD1-U	2x4 LED Troffer, 5000 lumens, 4000K, 80 CRI (min), 0-10V Dimming Driver	2-T8 32W, 2-T5 54W	4000K	120V/277V	5015	48.6	1	26	Yes	No	Yes	080083881642	PI0YCHQ9

FPanel LED Panel Series

Metalux

FPanel LED panel's refined visual optics, superior acrylic light guide and integrated grid retention clips provide the features needed for installation speed and flexibility. The LED driver is 0-10V dimming and the design is optimized for shallow plenum grid ceilings with surface mount and suspended options available. The panels are an excellent lighting solution for commercial office spaces, schools, healthcare facilities and retail merchandising areas.



Catalog Number	Product Description	Replaces	CCT	Voltage	Lumens	Watts	Case QTY	Pallet QTY	ON	AB	PT	UPC	DLC
14FP4235C	1' x 4' Flat Panel, 4200 Lumen, 3500K, 80 CRI, 0-10V Dim	2-T8 32W, 3-T8 32W	3500K	120V/ 277V	4389	39	1	51	Yes	No	Yes	080083833467	P3914ZW6
14FP4235C-347V	1' x 4' Flat Panel, 4200 Lumen, 4000K, 347V, 80 CRI, 0-10V Dim	2-T8 32W, 3-T8 32W	4000K	347V	4200	39	1	51	Yes	No	No	080083885466	PBGLLF3K
14FP4240C	1' x 4' Flat Panel, 4200 Lumen, 4000K, 80 CRI, 0-10V Dim	2-T8 32W, 3-T8 32W	4000K	120V/ 277V	4451	39	1	51	Yes	No	Yes	080083833481	
14FP4240C-347V	1' x 4' Flat Panel, 4200 Lumen, 4000K, 347V, 80 CRI, 0-10V Dim	2-T8 32W, 3-T8 32W	4000K	347V	4200	39	1	51	Yes	No	No	080083876709	
14FP4250C	1' x 4' Flat Panel, 4200 Lumen, 5000K, UNV, 0-10V Dim	2-T8 32W, 3-T8 32W	5000K	120V/ 277V	4521	39	1	51	Yes	No	Yes	080083833504	P15I522Z
14FP4250C-347V	1' x 4' Flat Panel, 4200 Lumen, 5000K, 347V, 80 CRI, 0-10V Dim	2-T8 32W, 3-T8 32W	5000K	347V	4200	39	1	51	Yes	No	No	080083885541	
22FP4235C	2' x 2' Flat Panel, 4200 Lumen, 3500K, UNV, 0-10V Dim	3-U6T8	3500K	120V/ 277V	4641	39	1	44	Yes	No	Yes	080083833580	P8HIK308
22FP4235C-347	2' x 2' Flat Panel, 4200 Lumen, 3500K, 347V, 80 CRI, 0-10V Dim	3-U6T8	3500K	347V	4200	39	1	44	Yes	No	No	080083885480	
22FP4240C	2' x 2' Flat Panel, 4200 Lumen, 4000K, 80 CRI, 0-10V Dim	3-U6T8	4000K	120V/ 277V	4567	39	1	44	Yes	No	Yes	080083833603	PELH4PNQ
22FP4240C-347	2' x 2' Flat Panel, 4200 Lumen, 4000K, 347V, 80 CRI, 0-10V Dim	3-U6T8	4000K	347V	4200	39	1	44	Yes	No	No	080083876723	
22FP4250C	2' x 2' Flat Panel, 4200 Lumen, 5000K, UNV, 0-10V Dim	3-U6T8	5000K	120V/ 277V	4200	39	1	44	Yes	No	Yes	080083833627	PDG74M1X
22FP4250C-347	2' x 2' Flat Panel, 4200 Lumen, 5000K, 347V, 80 CRI, 0-10V Dim	3-U6T8	5000K	347V	4200	39	1	44	Yes	No	No	080083885565	
24FP4735C	2' x 4' Flat Panel, 4700 Lumen, 3500K, 80 CRI, 0-10V Dim	2-T8 32W, 3-T8 32W	3500K	120V/ 277V	4990	40	1	22	Yes	No	Yes	080083833641	PRZ2RGDY
24FP4735C-347	2' x 4' Flat Panel, 4700 Lumen, 4000K, 347V, 80CRI, 0-10V Dim	2-T8 32W, 3-T8 32W	3500K	347V	4700	40	1	22	Yes	No	No	080083876747	
24FP4740C	2' x 4' Flat Panel, 4700 Lumen, 4000K, 80 CRI, 0-10V Dim	2-T8 32W, 3-T8 32W	4000K	120V/ 277V	4858	40	1	22	Yes	No	Yes	080083833665	PGY6ID6B
24FP4740C-347V	2' x 4' Flat Panel, 4700 Lumen, 4000K, 347V, 80CRI, 0-10V Dim	2-T8 32W, 3-T8 32W	4000K	347V	4700	40	1	22	Yes	No	No	080083876747	
24FP4750C	2' x 4' Flat Panel, 4700 Lumen, 5000K, UNV, 0-10V Dim	2-T8 32W, 3-T8 32W	5000K	120V/ 277V	4700	40	1	22	Yes	No	Yes	080083833689	PKRLSKJU
24FP4750C-347V	2' x 4' Flat Panel, 4700 Lumen, 5000K, 347V, 80CRI, 0-10V Dim	2-T8 32W, 3-T8 32W	5000K	347V	4700	40	1	22	Yes	No	No	080083885589	
24FP6435C	2' x 4' Flat Panel, 6400 Lumen, 3500K, 80 CRI, 0-10V Dim	3-T8 32W, 3-T5 28W	3500K	120V/ 277V	6400	59	1	22	Yes	No	Yes	080083833702	PTH8QST9
24FP6435C-347	2' x 4' Flat Panel, 6400 Lumen, 3500K, 347V, 80CRI, 0-10V Dim	3-T8 32W, 3-T5 28W	3500K	347V	6400	59	1	22	Yes	No	Yes	080083885527	
24FP6440C	2' x 4' Flat Panel, 6400 Lumen, 4000K, 80 CRI, 0-10V Dim	3-T8 32W, 3-T5 28W	4000K	120V/ 277V	6611	59	1	22	Yes	No	Yes	080083833726	PUQIRODO
24FP6440C-347	2' x 4' Flat Panel, 6400 Lumen, 4000K, 347V, 80CRI, 0-10V Dim	3-T8 32W, 3-T5 28W	4000K	347V	6400	59	1	22	Yes	No	Yes	080083876969	
24FP6450C	2' x 4' Flat Panel, 6400 Lumen, 5000K, 80 CRI, 0-10V Dim	3-T8 32W, 3-T5 28W	5000K	120V/ 277V	6400	59	1	22	Yes	No	Yes	080083833740	PL48S14X
24FP6450C-347	2' x 4' Flat Panel, 6400 Lumen, 5000K, 347V, 80CRI, 0-10V Dim	3-T8 32W, 3-T5 28W	5000K	347V	6400	59	1	22	Yes	No	Yes	080083885602	

FPanel LED Panel Accessories

Catalog Number	Product Description	Case QTY	Pallet QTY	ON	AB	PT	UPC
FPSURF14	1' x 4' Flat panel Surface mounting kit	10	240	Yes	No	Yes	080083802708
FPSURF22	2' x 2' Flat panel Surface mounting kit	10	480	Yes	No	Yes	080083802722
FPSURF24	2' x 4' Flat panel Surface mounting kit	10	240	Yes	No	Yes	080083802746

RTC LED Series

Metalux

The RTC lensed troffer series provides performance, reliability and flexibility with a housing optimized for shallow plenums. Developed with Eaton's latest generation of solid-state components and electronic driver technologies, these center illuminated troffers provide numerous options for color, lumens, controls and sensing. Designed to be compatible with popular ceiling systems, the RTC troffers are ideal for both new construction and remodel/replacement of fluorescent troffers in commercial office spaces, schools, healthcare facilities, and retail merchandising areas.



Catalog Number	Product Description	Replaces	CCT	Voltage	Lumens	Watts	Case QTY	Pallet QTY	ON	AB	PT	UPC	DLC
14RTC3435	1x4, 3350 lumens, 3500K, 80 CRI (min), 0-10V Dimming Driver	2-T8 32W	3500K	120V/277V	3350	28	1	24	Yes	No	Yes	080083802562	P3ARENNO
14RTC3440	1x4, 3350 lumens, 4000K, 80 CRI (min), 0-10V Dimming Driver	2-T8 32W	4000K	120V/277V	3350	29	1	24	Yes	No	Yes	080083802579	PY6RQZZ6
22RTC3435	2x2, 3400 lumens, 3500K, 80 CRI (min), 0-10V Dimming Driver	3-T8, 2-T5HO	3500K	120V/277V	3529	29	1	24	Yes	No	Yes	080083802586	PVHV2Y01
22RTC4835	2x2, 4800 lumens, 3500K, 80 CRI (min), 0-10V Dimming Driver	3-U6T8	3500K	120V/277V	4800	38	1	24	Yes	No	Yes	080083802609	PXABRXX9
22RTC4840	2x4, 4800 lumens, 4000K, 80 CRI (min), 0-10V Dimming Driver	3-U6T8	4000K	120V/277V	4800	38.1	1	24	Yes	No	Yes	080083802616	PQ25NDJI
24RTC4835	2x4, 4800 lumens, 3500K, 80 CRI (min), 0-10V Dimming Driver	2-T8 32W, 2-T5 54W	3500K	120V/277V	4773	39	1	13	Yes	No	Yes	080083802623	PACTDBFB
24RTC4840	2x4, 4800 lumens, 4000K, 80 CRI (min), 0-10V Dimming Driver	2-T8 32W, 2-T5 54W	4000K	120V/277V	4775	39	1	13	Yes	No	Yes	080083802630	PHU6666Z

GR8 Lensed Troffer Series

Metalux

The GR8 series is a T8-dedicated lensed troffer designed to offer premium performance in a low profile housing. The T8 dedication and optimized lamp to lens spacing provides the best in energy efficiency and optical control. The GR8's shallow, low profile housing is compatible with even highly restrictive plenums. The luminaires are compatible with today's popular ceiling systems.



Catalog Number	Product Description	Replaces	Voltage	Lumens	Watts	Case QTY	Pallet QTY	ON	AB	PT	UPC
2GR8-432A-UNV-EB81-U	4 Lamp, 2'x4' Static Lensed Troffer, CEE Listed Electronic Ballast, T8	4-T8 32W	120V/277V	Lamp Dependant	Lamp Dependant	1	28	Yes	Yes	Yes	662401286812

GRLED Series

Metalux

The GRLED troffer series is built and designed for general purpose lighting applications. With multiple LED lens options, the GRLED can provide optimal spacing, energy efficiency and optical control. GRLED leverages a shallow, low-profile housing, making it compatible with highly restrictive plenums and today's most common ceiling systems. GRLED is a great choice for commercial offices, schools, hospitals, retail merchandising and many other applications.



Catalog Number	Product Description	Replaces	CCT	Voltage	Lumens	Watts	Case QTY	Pallet QTY	ON	AB	PT	UPC	DLC
14GR-LD5-32-F1-UNV-L840-CD1-U	1x4 LED Troffer, Frost Lens 3200 lumens, 4000K, 120V-277V UNV 0-10V Dim	2-T8 32W	4000K	120V/277V	3200	29.8	1	24	Yes	No	No	080083800575	P39JVBRV
24GR-LD5-48-F1-UNV-L835-CD1-U	2x4 LED Troffer, 4800 lumen, 3500K, 0-10V Dim	2-T8 32W	3500K	120V/277V	4800	43	1	28	Yes	Yes	Yes	080083817160	PUSH29NN
24GR-LD5-48-F1-UNV-L840-CD1-U	2x4 LED Troffer, Frost Lens 4800 lumens, 4000K, 120V-277V UNV, 0-10V Dim	2-T8 32W	4000K	120V/277V	4800	43	1	28	Yes	Yes	Yes	080083817153	PMDVK98H

Troffer and Parabolic Options and Accessories

Catalog Number	Product Description	Case QTY	Pallet QTY	ON	AB	PT	UPC
DF-14W-U	1'x4' Dry Wall Frame Kit	1	336	Yes	Yes	Yes	662401232949
DF-22W-U	2'x2' Dry Wall Frame Kit	1	322	Yes	Yes	No	662401232963
DF-24W-U	2'x4' Dry Wall Frame Kit	1	195	Yes	Yes	Yes	662401232970

ST LED Striplights

Metalux

The Metalux ST commercial series is a full-width LED strip light. It is designed to retrofit and replace fluorescent strip lights or for new construction. The ST series comes standard with a continuous row mount aligner bracket, tool-less channel cover, surface or suspended mount features, universal voltage cold-start driver and five-year warranty. These construction features make the ST a combination of quality, performance, and value that helps make ordering, installing and saving energy the top focus of any stock or project business.



Catalog Number	Product Description	Replaces	CCT	Voltage	Lumens	Watts	Case QTY	Pallet QTY	ON	AB	PT	UPC	DLC
2ST1L1040R	2' Strip, Single lens, 1100 lumen, 4000K, UNV	1-T8 17W	4000K	120V/277V	1165	10	6	288	Yes	No	Yes	080083838165	PLYWPPTN5MXA
4ST1L2040R	4' Strip, Single lens, 2200 lumen, 4000K, UNV	1-T8 32W	4000K	120V/277V	2153	20	6	252	Yes	No	Yes	080083838189	PLALG17SBDJR
4ST2L4040R	4' Strip, Dual Lens, 4200 Lumen, 4000K, UNV	2-T8 32W, 1-T5HO 54W	4000K	120V/277V	4433	39	6	150	Yes	No	Yes	080083838196	PLT1KD8JM2VZ
4ST2L4050R	4' Strip, Dual Lens, 4800 Lumen, 5000K, UNV	2-T8 32W, 1-T5HO 54W	5000K	120V/277V	4790	39.4	6	150	Yes	No	Yes	080083890620	PL76WW00YYLJ
8ST2L8040R	8' Strip, Dual Lens, 8200 Lumen, 4000K, UNV	4-T8 32W, 2-T12 75W	4000K	120V/277V	8867	78	6	150	Yes	No	Yes	080083838202	PL5RGM59H32E
8ST2L8050R	8' Strip, Dual Lens, 9400 Lumen, 5000K, UNV	4-T8 32W, 2-T12 75W	5000K	120V/277V	9412	81	6	150	Yes	No	Yes	080083890644	PLV2JB5EV48H

SLSTP LED Striplight Series

Metalux

The SLSTP striplight is a low-profile, high-quality luminaire offering the latest solid state lighting and electronic driver technology that optimizes performance and energy efficiency. The series low-profile design is the ideal solution for restricted spaces and meets traditional requirements for single or continuous row applications.



Catalog Number	Product Description	Replaces	CCT	Voltage	Lumens	Watts	Case QTY	Pallet QTY	ON	AB	PT	UPC	DLC
4SLSTP4040DD-120V	4', Linear LED Striplight, 4000 lumen, 4000K, 120V Triac dimmable	2-T8 32W, 1-T5HO 54W	4000K	120V	4000	40	2	80	Yes	Yes	Yes	080083705801	PA3XMS28
4SLSTP4040DD-UNV	4', Linear LED Striplight, 4000 lumen, 4000K, UNV, 0-10V dimmable	2-T8 32W, 1-T5HO 54W	4000K	120V/277V	4000	43	2	72	Yes	Yes	Yes	080083705825	PXZQGN9C
8SLSTP11040DD-UNV	8', Linear LED Striplight, 10000 lumen, 4000K, UNV, 0-10V dimmable	4-T8 32W, 2-T12 75W	4000K	120V/277V	10464	83	2	70	Yes	No	Yes	080083807680	PWA7BZM9
8SLSTP8040DD-UNV	8', Linear LED Striplight, 8000 lumen, 4000K, UNV, 0-10V dimmable	4-T8 32W, 2-T12 75W	4000K	120V/277V	8176	71	2	70	Yes	No	Yes	080083814787	POK8WFD1

SSF Striplight Series

Metalux

The SSF Series is a functional and multi-purpose standard striplight family incorporating premium performance and construction durability. Designed with our easy-to-use Flip-Up socket design, the SSF significantly reduces installation time. The SSF Series can be installed using various mounting methods with numerous options and accessories available. The series is ideal for commercial, industrial, retail and residential applications.



Catalog Number	Product Description	Replaces	CCT	Voltage	Lumens	Case QTY	Pallet QTY	ON	AB	PT	UPC
8TSSF-232-347V-EB81-U	4 Lamp, Tandem 8' Standard Strip, 347V CEE Listed Electronic Ballast, T8, Flip-up Sockets	4-T8 32W	Lamp Dependant	347V	Lamp Dependant	1	72	Yes	No	No	080083519712
8TSSF-232-UNV-EB81-U	4 Lamp, Tandem 8' Standard Strip, 120-277V CEE Listed Electronic Ballast, T8, Flip-up Sockets	4-T8 32W	Lamp Dependant	120V/277V	Lamp Dependant	1	72	Yes	Yes	Yes	080083519682
8TSSF-232-UNV-OS-QHE4X32T8UNVISNSC-U	4 Lamp, Tandem 8' Standard Strip, 120-277V CEE Listed Osram Ballast, T8, Flip-up Sockets	4-T8 32W	Lamp Dependant	120V/277V	Lamp Dependant	1	72	Yes	No	No	080083519651
8TSSF-254T5-UNV-EBT1-U	4 Lamp, Tandem 8' Standard Strip, 120-277V CEE Listed Electronic Ballast, T5HO, Flip-up Sockets	4-T5HO 54W	Lamp Dependant	120V/277V	Lamp Dependant	1	72	Yes	Yes	No	080083547364
SSF-232-UNV-EB81-U	2 Lamp, 4' Standard Strip, 120/277V, UNV Electronic Ballast, T8, Flip-up Sockets	2-T8 32W	Lamp Dependant	120V/277V	Lamp Dependant	1	96	Yes	Yes	Yes	080083519590
SSF-232-UNV-ER81-U	2 Lamp, 4' Standard Strip, 120-277V Program Rapid Start Electronic Ballast, T8, Flip-up Sockets	2-T8 32W	Lamp Dependant	120V/277V	Lamp Dependant	1	90	Yes	No	No	080083620845
SSF-232-UNV-OS-QHE2X32T8UNVISNSC-U	2 Lamp, 4' Standard Strip, 120-277V CEE Listed Osram Ballast, T8, Flip-up Sockets	2-T8 32W	Lamp Dependant	120V/277V	Lamp Dependant	1	90	Yes	Yes	No	080083519576
SSF-254T5-UNV-EBT1-U	2 Lamp, 4' Standard Strip, 120-277V Program Rapid Start Electronic Ballast, T5HO, Flip-up Sockets	2-T5HO 54W	Lamp Dependant	120V/277V	Lamp Dependant	1	90	Yes	Yes	No	080083552511

SSF Striplight Accessories

Catalog Number	Product Description	Case QTY	Pallet QTY	ON	AB	PT	UPC
GRP-SSF-U	Gripper for Use w/SSF, IAF & ICF Series Except IA/IC - HO Series	60	5376	Yes	No	Yes	080083519262
WG/SSF-4FT-B	4' White Wire Guard for Use w/SSF Series Only	24	192	Yes	Yes	Yes	662400106647

SNF Narrow Striplite Series

Metalux

The SNF Series is a functional and multi-purpose narrow strip family that incorporates premium performance and construction durability. The performance and application versatility of this series can be increased by incorporating symmetrical or asymmetrical reflectors. The SNF Series can be installed using various mounting methods and numerous options and accessories are available. The small size of the SNF makes it an ideal choice for size-restricted architectural applications.



Catalog Number	Product Description	Replaces	CCT	Voltage	Lumens	Watts	Case QTY	Pallet QTY	ON	AB	PT	UPC
SNF-132-UNV-EB81-U	1 Lamp, 4' Narrow Strip, CEE Listed Electronic Ballast, T8, Flip-up Sockets	1-T8 32W	Lamp Dependant	120V/ 277V	Lamp Dependant	Lamp Dependant	1	294	Yes	Yes	Yes	080083519859

SNF Narrow Striplite Accessory

Catalog Number	Product Description	Case QTY	Pallet QTY	ON	AB	PT	UPC
WG/SNF-4FT-B	4' White Wire Guard for Use w/SNF Series Only	30	270	Yes	Yes	Yes	662400106630

SNLED Striplight Series

Metalux

The SNLED linear LED striplight series offers breakthrough fixture efficiency and control versatility. Offered in base, lensed and reflector models, the SNLED provides application flexibility of a traditional striplight with cutting-edge LED performance. Featuring 0-10V dimming to 10%, the small size makes it an ideal choice for size restricted applications. The series is ideal for commercial, industrial and residential applications.



Catalog Number	Product Description	Replaces	CCT	Voltage	Lumens	Watts	Case QTY	Pallet QTY	ON	AB	PT	UPC	DLC
8TSNLED-LD5-81SL-LW-UNV-L840-CD1-U	8' Linear LED Striplight, 8100 lumens, 4000K, 0 - 10V dim driver, UNV, with wide lens	4-T8 32W, 2-T12 75W	4000K	120V/ 277V	8100	61	1	63	Yes	No	No	080083817054	P9HQWJGJZ

IAF, ICF Series

Metalux

The IAF/ICF Series is an energy efficient family of light duty industrials that feature premium performance and durability. The series incorporates sturdy embossed reflectors that precisely direct and effectively control light. The IAF Series can be installed using various mounting methods and numerous options and accessories are available. The series is available with both Apertured (IAF) and Closed Top (ICF) reflector combinations



Catalog Number	Product Description	Replaces	Voltage	Lumens	Case QTY	Pallet QTY	ON	AB	PT	UPC
8TIAF-232-UNV-OS-QHE4X32T8UNVISNSC-U	4 Lamp, Tandem 8' Industrial Apertured Uplight, CEE Listed Osram Sylvania Electronic Ballast, T8, Flip-Up Sockets	4-T8 32W	120V/ 277V	Lamp Dependant	1	48	Yes	Yes	No	080083529568
8TICF-232-UNV-EB81-U	4 Lamp, Tandem 8' Industrial Closed Top, Electronic Ballast, T8, Flip-up Sockets	4-T8 32W	120V/ 277V	Lamp Dependant	1	60	Yes	Yes	No	080083519439

WPLD LED Wraparound Series

Metalux

The WPLD series is a versatile LED wraparound family featuring a streamlined low-profile design that displays uniform, soft light while providing up to 60% energy savings over fluorescent light sources. Mounting slots allow for installation directly into the junction box with 100° of rotational freedom.



Catalog Number	Product Description	Replaces	CCT	Voltage	Lumens	Watts	Case QTY	Pallet QTY	ON	AB	PT	UPC	DLC
4WPLD3140R9	4 ft., Linear LED Wrap, 3100 lumen, 4000K, Triac Dimming	2-T8 32W	4000K	120V	3100	39.16	2	84	Yes	No	Yes	080083747467	
4WPLD4035C	4 ft., Linear LED Wrap, 4000 lumen, 3500K, 0-10VDC Dimming	2-T8 32W	3500K	120V/ 277V	4000	45	2	84	Yes	No	Yes	080083750603	PZ4NNCFK

WNLED Wraparound Series

Metalux

The WNLED series is a versatile, utility-based, traditionally styled LED wraparound family designed for use in a broad range of commercial, schools, institutional, retail and residential applications. The WNLED series is designed to provide long service life, eliminating re-lamping issues and minimizing maintenance common with traditional fluorescent.



Catalog Number	Product Description	Replaces	CCT	Voltage	Lumens	Watts	Case QTY	Pallet QTY	ON	AB	PT	UPC	DLC
4WNLED-LD4-40SL-F-UNV-L835-CD1-U	4' Linear LED Striplight, 4000 lumens, 3500K, 0-10V dimmable driver	2-T12, 2-T8 32W	3500K	120V/ 277V	4062	36	1	90	Yes	Yes	Yes	080083817115	P7DPJZPE

CWPLD LED Wraparound Series

Metalux

The CWPLD series is a versatile LED wraparound family with uniform, soft light providing up to 60% energy savings over fluorescent light sources. This versatile wrap is equipped with quick row or suspension mount capability. Premium optical linear prisms provide even light distribution, minimizing the number of fixtures required to light a space. The CWPLD series is an ideal choice for commercial, retail or residential applications.



Catalog Number	Product Description	Replaces	CCT	Voltage	Lumens	Watts	Case QTY	Pallet QTY	ON	AB	PT	UPC	DLC
4CWPLD4040C	4 ft., Linear LED Wrap, 4000 lumen, 4000K, 0-10VDC Dimming	2-T12, 2-T8	4000K	120/ 277V	4700	43	1	60	Yes	No	Yes	080083749072	P5SLI38B

WN Series Commercial Wrap

Metalux

The WN Series is a surface wraparound luminaire featuring energy efficient performance. The luminaire's clean, low profile design is both appealing and functional. The WN Series utilizes a clear, low brightness, extruded acrylic refractor for high performance and aesthetics. The efficient and stylish WN Series is the perfect wraparound for commercial applications.



Catalog Number	Product Description	Replaces	CCT	Voltage	Lumens	Watts	Case QTY	Pallet QTY	ON	AB	PT	UPC	DLC
WN-232A-UNV-EB81-U	2 Lamp, 4' Surface Commercial Wraparound, CEE Listed Electronic Ballast, T8	2-T8 32W	Lamp Dependant	120/ 277V	Lamp Dependant	Lamp Dependant	1	80	Yes	Yes	Yes	080083518845	
WN-432A-UNV-EB81-U	4 Lamp, 4' Surface Commercial Wraparound, CEE Listed Electronic Ballast, T8	4-T8 32W	Lamp Dependant	120/ 277V	Lamp Dependant	Lamp Dependant	1	36	Yes	Yes	Yes	080083518517	

LW LED Specification Linear Wrap

Metalux

The Metalux LW linear wrap is a specification grade, DLC listed, 4 foot product made for retrofit or new construction projects where both aesthetics and value are critical. The LW's 7" width ensures wide retrofit capability and comes with commercial features such as universal voltage, 0-10V dimming, integrated emergency battery option and quick row or suspension mount. Use the LW in offices, schools, stairways, retail or other light commercial places.



Catalog Number	Product Description	Replaces	CCT	Voltage	Lumens	Watts	Case QTY	Pallet QTY	ON	AB	PT	UPC	DLC
4NLW4040C	4ft Wrap Linear Narrow 4600L 4000K UNV 0-10V	2-T12, 2-T8	4000K	120/277V	4617	38	2	40	Yes	No	Yes	080083864485	PP2L68GD

WP LED Wraparound Series

Metalux

This compact LED wrap light delivers value and energy savings with countless application possibilities. Compared to fluorescent fixtures, the light output is much more eye-pleasing and the prismatic lens ensures even, glare-free light distribution. With a universal 120-277V ballast, its a reliable, no-fuss choice for most commercial applications from schools and dorms to warehouses and retail areas.



Catalog Number	Product Description	Replaces	CCT	Voltage	Lumens	Watts	Case QTY	Pallet QTY	ON	AB	PT	UPC	DLC
4WP3040C	4' Utility Wrap LED 32L 4K UNV, Non-Dim	2-T8 32W	4000K	120V/277V	3200	31	6	72	Yes	Yes	No	080083858361	PC1Y2OYN

FM LED Dimming Flushmounts

Metalux

FM series is a versatile LED ceiling or wall mount series which can be used in a broad range of residential and commercial applications. With a traditional opal white lens, the FM series produces even, uniform light distribution and ideal choice for offices, corridors, stairways, bedroom, closet and foyers applications where customers are replacing incandescent, circline or compact fluorescent lamps.



Catalog Number	Product Description	Replaces	Selectable CCT	Voltage	Lumens	Watts	Case QTY	Pallet QTY	ON	AB	PT	UPC
FM9WRCCR	9" LED Flushmount, 950 lumens, CCT Selectable, 3500K, 4000K, 5000K, 120V Triac Dimming	100W INC	3500K/4000K/5000K	120V	950	12.3	8	96	Yes	No	Yes	080083845392
FM11WRCCR	11" LED Flushmount, 1050 lumens, CCT Selectable, 3500K, 4000K, 5000K, 120 Triac Dimming	22W CFL	3500K/4000K/5000K	120V	1050	14	4	72	Yes	Yes	Yes	080083840151
FM15WRCCR	15" LED Flushmount, 1700 lumens, CCT Selectable, 3500K, 4000K, 5000K, 120 Triac Dimming	2-100W INC	3500K/4000K/5000K	120V	1700	21.4	4	32	Yes	Yes	Yes	080083845378
FM19WRCCR	19" LED Flushmount, 2450 lumens, CCT Selectable, 3500K, 4000K, 5000K, 120 Triac Dimming	2-24W CFL	3500K/4000K/5000K	120V	2450	32.8	2	24	Yes	Yes	Yes	080083845415

SHP BTS Bluetooth Shoplight

Metalux

The SHP BTS is a fully integrated LED shoplight with Bluetooth wireless speakers. The SHP BTS speakers provide clear, balanced sound that can fill an entire workspace. This rugged, lightweight, and portable shoplight combines a polycarbonate housing body and lens with LEDs rated for 50,000 hours of life. The shoplight comes with a chainset or surface bracket and a 5ft grounded cord & plug.



Catalog Number	Product Description	Replaces	CCT	Voltage	Lumens	Watts	Case QTY	Pallet QTY	ON	AB	PT	UPC
4SHP3240BTS	43" Utility Shoplight with Bluetooth Speakers, LED, 3200 lumens, 4000K, 120V	2-T8 32W	4000K	120V	3800	31	2	72	Yes	No	Yes	080083785612

Ambient

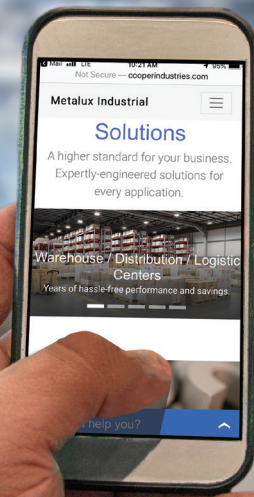


High Bay



Vaportite

Metalux Industrial

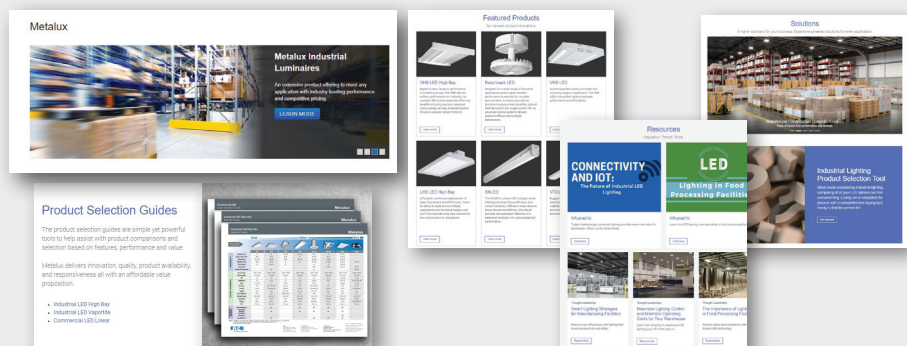


Industrial tools and resources to help you close the deal

Metalux has launched a dedicated industrial website to support your growth in the industrial market. Designed to serve as a hub to showcase our industrial products and thought leadership in the industry, this website is an effective way to keep your customers excited and engaged with the latest and greatest from Metalux Industrial.

» Visit Eaton.com/IndustrialLighting and find:

- ✓ Newly launched product selection tool
- ✓ Featured products and solutions
- ✓ Thought leadership content, including articles and infographics
- ✓ Product selection guides and more



OHB LED High Bay

Metalux

OHB (Optimized High Bay) LED High Bay luminaires are designed for a wide variety of applications and mounting heights while delivering a value proposition of industry leading performance and reliability to customers. It's scalable LED module assembly offers exceptional performance with associated benefits of precision designed optics, energy savings, extended system life, and a reduced carbon footprint. The OHB is an energy-efficient one-for-one replacement of linear fluorescent and HID fixtures and is the ideal linear high bay fixture for use in industrial, manufacturing, and gymnasium applications.



Rapid Response



Catalog Number	Product Description	Replaces	CCT	Voltage	Lumens	Case QTY	Pallet QTY	ON	AB	PT	UPC
OHB-18SE-W-UNV-L840-CD-MP-U	18K Standard Efficacy Lumens, 4000K, Wide Distribution, 120-277V, 0-10V Dim Driver, Modular Receptacle	8-T8 32W, 4-T5HO 54W	4000K	120/277V	18000	1	36	Yes	No	No	PI82I53L
OHB-24SE-W-347V-L840-CD-MP-U	24K Standard Efficacy Lumens, 4000K, Wide Distribution, 347V, 0-10V Dim Driver, Modular Receptacle	400W HID, 6-T5HO 54W	4000K	347V	24000	1	36	Yes	No	No	PFO0QT12
OHB-24SE-W-UNV-L840-CD-MP-U	24K Standard Efficacy Lumens, 4000K, Wide Distribution, 120-277V, 0-10V Dim Driver, Modular Receptacle	400W HID, 6-T5HO 54W	4000K	120/277V	24000	1	36	Yes	No	No	PFO0QT12
OHB-24SE-W-UNV-L850-CD-MP-U	24K Standard Efficacy Lumens, 5000K, Wide Distribution, 120-277V, 0-10V Dim Driver, Modular Receptacle	400W HID, 6-T5HO 54W	4000K	120/277V	24000	1	36	No	Yes	No	PBHX10S1

HBLE LED High Bay

Metalux

The HBLE delivers industry-leading performance and reliability for a variety of high-bay applications. Ideal for industrial, commercial, manufacturing, gymnasium and other applications that utilize traditional HID and linear fluorescent high bays. The proprietary low-power, low-brightness LED module assembly offers exceptional optical performance with the enhanced benefits of LED lighting, including energy savings, extended system life, a reduced carbon footprint.



Rapid Response



Catalog Number	Product Description	Replaces	CCT	Voltage	Lumens	Watts	Case QTY	Pallet QTY	ON	AB	PT	UPC	DLC
HBLE-LD5-24SE-W-347V-L840-CD2-MP-U	Wide distribution, 24,000 Lumens, 347V, 4000K, 0-10V, modular receptacle	400W HID, 6-T5HO 54W	4000K	347V	24000		1	12	Yes	No	Yes	080083787371	PQ581M1M
HBLE-LD5-24SE-W-UNV-L840-CD2-MP-U	Wide distribution, 24,000 Lumens, UNV, 4000K, 0-10V, modular receptacle	400W HID, 6-T5HO 54W	4000K	120/277V	24000		1	12	Yes	Yes	No	080083787401	PQ581M1M
HBLE-LD5-24SE-W-UNV-L850-CD2-MP-U	Wide distribution, 24,000 Lumens, UNV, 5000K, 0-10V, modular receptacle	400W HID, 6-T5HO 54W	5000K	120/277V	24000	154	1	12	No	Yes	No	080083787364	P76G8AE9

Steeler LED High Bay

Metalux

The Steeler LED High Bay is the energy-efficient solution for both low bay and high bay applications. Designed with precision optics, the Steeler delivers industry-leading performance utilizing the latest in LED technology. The Steeler's durable and compact design provides quick and easy installation for retrofitting HID and linear fluorescent high bays.



Catalog Number	Product Description	Replaces	CCT	Voltage	Lumens	Watts	Case QTY	Pallet QTY	ON	AB	PT	UPC	DLC
SSLED-LD5-24-W-UNV-L840-CD2-MP/SHK-U	SSLED WD DISTR 24K LMS UNV 4000K 0-10V, Mod Plug, Safety Hook	400W HID, 6-T5HO 54W	4000K	120/277V	24000	154	1	8	Yes	No	No	080083859474	P5HS7YXR

VHB LED High Bay

Metalux

The VHB High Bay Series is designed for a wide variety of applications and mounting heights with a balance of fixture performance and affordability. The precision designed optics, multiple distributions, lumen outputs and color temperatures choices make the VHB series ideal for industrial, commercial, manufacturing, gymnasium and other applications that utilize traditional linear fluorescent and HID high bays.

Rapid Response



High Bay

Catalog Number	Product Description	Replaces	CCT	Voltage	Lumens	Watts	Case QTY	Pallet QTY	ON	AB	PT	UPC	DLC
VHBLED-LD1-12-W-UNV-L840-CD1-MP-U	Compact body, wide distribution, 12,000 lumens, UNV, 4000K, 0-10V, modular plug	6-T8 32W, 4-T5HO 54W	4000K	120/277V	12000	100	1	78	Yes	No	No	080083786879	P13QSWDD
*VHB-12-W-UNV-L840-CD-MP-U	Compact body, wide distribution, 12,000 lumens, UNV, 4000K, 0-10V, modular plug	6-T8 32W, 4-T5HO 54W	4000K	120/277V	12000		1	78	Yes	No	No	080083786879	P87DJGBP
VHBLED-LD1-18-W-UNC-L840-CD1-MP-U	Compact body, wide distribution, 18,000 lumens, 347-480V, 4000K, 0-10V, modular plug	8-T8 32W, 4-T5HO 54W	4000K	347-480V	18000	160	1	78	Yes	Yes	No	080083786886	P2TN5TKS
*VHB-18-W-UNC-L840-CD-MP-U	Compact body, wide distribution, 18,000 lumens, 347-480V, 4000K, 0-10V, modular plug	8-T8 32W, 4-T5HO 54W	4000K	347-480V	18000		1	78	Yes	Yes	No	080083786886	P4V97SSN
VHBLED-LD1-18-W-UNV-L840-CD1-MP-U	Compact body, wide distribution, 18,000 lumens, UNV, 4000K, 0-10V, modular plug	8-T8 32W, 4-T5HO 54W	4000K	120/277V	18000	160	1	78	Yes	Yes	No	080083786893	P2TN5TKS
*VHB-18-W-UNV-L840-CD-MP-U	Compact body, wide distribution, 18,000 lumens, UNV, 4000K, 0-10V, modular plug	8-T8 32W, 4-T5HO 54W	4000K	120/277V	18000		1	78	Yes	Yes	No	080083786893	P75UJXK
VHBLED-LD1-24-W-UNC-L840-CD1-MP-U	Compact body, wide distribution, 24,000 lumens, 347-480V, 4000K, 0-10V, modular plug	400W HID, 6-T5HO 54W	4000K	347-480V	24000	213	1	78	Yes	No	No	080083827282	
*VHB-24-W-UNC-L840-CD-MP-U	Compact body, wide distribution, 24,000 lumens, 347-480V, 4000K, 0-10V, modular plug	400W HID, 6-T5HO 54W	4000K	347-480V	24000		1	78	Yes	No	No	080083827282	PE3UMZTD
VHBLED-LD1-24-W-UNC-L840-CD1-MP-U	Compact body, wide distribution, 24,000 lumens, 347-480V, 5000K, 0-10V, modular plug	400W HID, 6-T5HO 54W	5000K	347-480V	24000	213	1	78	Yes	No	No	080083827268	
*VHB-24-W-UNC-L850-CD-MP-U	Compact body, wide distribution, 24,000 lumens, 347-480V, 5000K, 0-10V, modular plug	400W HID, 6-T5HO 54W	5000K	347-480V	24000		1	78	Yes	No	No	080083827268	PH575GE1
VHBLED-LD1-24-W-UNV-L840-CD1-MP-U	Compact body, wide distribution, 24,000 lumens, UNV, 4000K, 0-10V, modular plug	400W HID, 6-T5HO 54W	4000K	120/277V	24000	213	1	78	Yes	No	No	080083827299	P4N22T48
*VHB-24-W-UNV-L840-CD-MP-U	Compact body, wide distribution, 24,000 lumens, UNV, 4000K, 0-10V, modular plug	400W HID, 6-T5HO 54W	4000K	120/277V	24000		1	78	Yes	No	No	080083827299	PJ92YFP9
VHBLED-LD1-24-W-UNV-L850-CD1-MP-U	Compact body, wide distribution, 24,000 lumens, UNV, 5000K, 0-10V, modular plug	400W HID, 6-T5HO 54W	5000K	120/277V	24000	213	1	78	Yes	No	No	080083827275	PDCRV4JI
*VHB-24-W-UNV-L850-CD-MP-U	Compact body, wide distribution, 24,000 lumens, UNV, 5000K, 0-10V, modular plug	400W HID, 6-T5HO 54W	5000K	120/277V	24000		1	78	Yes	No	No	080083827275	PH575GE1

*Note: New VHB2 family series to replace VHBLED

UHB LED High Bay

Metalux

The UHB LED series is a round high bay luminaire designed for a variety of mounting heights and customer applications. The traditional round form factor and compact design make the UHB easy to install. A specialty designed lens provides optimal distribution while also reducing high angle glare. It's also available in multiple lumen packages and color temperatures providing design flexibility. The universal mounting allows for quick retrofit installations. The UHB is an ideal solution for manufacturing, retail, warehouse, and gymnasium applications.



Catalog Number	Product Description	Replaces	CCT	Voltage	Lumens	Case QTY	Pallet QTY	ON	AB	PT	UPC
UHB-12-UNV-L840-CD-U	LED Round High Bay, 4000K, 120/277V, White, 12000 lumens	6-T8 32W, 4-T5HO 54W	4000K	120/277V	12000	1	45	Yes	Yes	Yes	080083885862
UHB-12-UNV-L850-CD-U	LED Round High Bay, 5000K, 120/277V, White, 12000 lumens	6-T8 32W, 4-T5HO 54W	5000K	120/277V	12000	1	45	Yes	Yes	Yes	080083885886
UHB-18-UNV-L840-CD-U	LED Round High Bay, 4000K, 120/277V, White, 18000 lumens	8-T8 32W, 4-T5HO 54W	4000K	120/277V	18000	1	45	Yes	Yes	Yes	080083885909
UHB-18-UNV-L850-CD-U	LED Round High Bay, 5000K, 120/277V, White, 18000 lumens	8-T8 32W, 4-T5HO 54W	5000K	120/277V	18000	1	45	Yes	Yes	Yes	080083885923
UHB-24-UNV-L840-CD-U	LED Round High Bay, 4000K, 120/277V, White, 24000 lumens	400W HID, 6-T5HO 54W	4000K	120/277V	24000	1	20	Yes	Yes	Yes	080083885947
UHB-24-UNV-L850-CD-U	LED Round High Bay, 5000K, 120/277V, White, 24000 lumens	400W HID, 6-T5HO 54W	5000K	120/277V	24000	1	20	Yes	Yes	Yes	080083885961
UHB-30-UNV-L840-CD-U	LED Round High Bay, 4000K, 120/277V, White, 30000 lumens	400W HID, 6-T5HO 54W	4000K	120/277V	30000	1	20	Yes	Yes	Yes	080083885985
UHB-30-UNV-L850-CD-U	LED Round High Bay, 5000K, 120/277V, White, 30000 lumens	400W HID, 6-T5HO 54W	5000K	120/277V	30000	1	20	Yes	Yes	Yes	080083886005

UHB LED High Bay Accessories

Catalog Number	Product Description	Case QTY	Pallet QTY	ON	AB	PT	UPC
UHB-ALR12	LED Round High Bay, Aluminum Reflector 12"	5	120	Yes	No	Yes	080083904822
UHB-ALR14	LED Round High Bay, Aluminum Reflector 14"	5	80	Yes	No	Yes	080083904846
UHB-CLR10	LED Round High Bay, Clear Refractor 10"	5	90	Yes	No	Yes	080083886029
UHB-CLR12	LED Round High Bay, Clear Refractor 12"	5	120	Yes	No	Yes	080083904785
UHB-CLR14	LED Round High Bay, Clear Refractor 14"	5	60	Yes	No	Yes	080083904808
UHB-SMB10	LED Round High Bay, Surface Mount Bracket 10"	10	1000	Yes	No	Yes	080083905041
UHB-SMB12	LED Round High Bay, Surface Mount Bracket 12"	10	400	Yes	No	Yes	080083886067
UHB-SMB14	LED Round High Bay, Surface Mount Bracket 14"	10	640	Yes	No	Yes	080083886081
UHB-WG10	LED Round High Bay, Wireguard 10"	10	480	Yes	No	Yes	080083137701
UHB-WG12	LED Round High Bay, Wireguard 12"	10	480	Yes	No	Yes	080083904860
UHB-WG14	LED Round High Bay, Wireguard 14"	10	240	Yes	No	Yes	080083904884

LHB LED High Bay

Metalux

The LHB Series LED is a low bay/high bay luminaire designed for a wide variety of applications and mounting heights. The LHB is an energy-efficient, one-for-one replacement of linear fluorescent and HID fixtures and is an ideal solution for industrial, manufacturing, gymnasium and warehouse applications.



Catalog Number	Product Description	Replaces	CCT	Voltage	Lumens	Watts	Case QTY	Pallet QTY	ON	AB	PT	UPC	DLC
LHB-12-UNV-L840-CD-U	LED Linear High Bay, 12K Lumens, 4000K, 120/277V Dim Driver	6-T8 32W, 4-T5HO 54W	4000K	120/277V	12000	87	1	44	Yes	No	Yes	080083859160	PLCCRS3FP14Q
LHB-18-UNV-L840-CD-U	LED Linear High Bay, 18K Lumens, 4000K, 120/277V Dim Driver	8-T8 32W, 4-T5HO 54W	4000K	120/277V	18000	132	1	44	Yes	No	Yes	080083859207	PLYPCB02RW1Y
LHB-24-UNV-L840-CD-U	LED Linear High Bay, 24K Lumens, 4000K, 120/277V Dim Driver	400W HID, 6-T5HO 54W	4000K	120/277V	24000	175	1	44	Yes	No	Yes	080083859245	PLWL6C907DI4
LHB-24-UNV-L850-CD-U	LED Linear High Bay, 24K Lumens, 5000K, 120/277V Dim Driver	400W HID, 6-T5HO 54W	5000K	120/277V	24000	175	1	44	Yes	No	Yes	080083859269	PLQ5XUSDH4JX

VT LED Vaportite

Metalux

The VT LED Vaportite family of industrial fixtures feature rugged and durable construction. The energy-efficient series incorporates a sealed and gasketed, reinforced fiberglass housing with a high impact diffuser. The optical performance is ideal for interior and exterior applications including parking garages, food processing, canopy, manufacturing and complex environments.



Catalog Number	Product Description	Replaces	CCT	Voltage	Lumens	Watts	Case QTY	Pallet QTY	ON	AB	PT	UPC	DLC
4VT3-LD5-6-G-UNV-L840-CD1-U	4ft Vaportite, LED, 6400 Lumen, 4000K, 0-10V, Wet, UNV	3-T8, 1-T5HO	4000K	120V/277V	6490	51	1	40	Yes	No	Yes	080083851447	P8U3H2QZ
VT4LED-LD5-24-DR-UNV-L840-CD2-WL-U	4ft Vaportite LED, 23,00 lumens, IP65 & IP67 rated, UNV, 120V thru 277V UNV	400W HID, 6-T5HO 54W	4000K	120V/277V	23000	179	1	18	Yes	No	No		P9YZ8ILZ

VT LED Vaportite Accessory

Catalog Number	Product Description	Case QTY	Pallet QTY	ON	AB	PT	UPC
VT-LATCH	Vapor-tite latches	300	36000	Yes	No	Yes	662400106685

APVT LED Vaportite

Metalux

The APVT LED series is compact vaportite fixture ideal for wet location environments. The APVT incorporates a sealed and gasketed polycarbonate housing with a high impact polycarbonate diffuser. The APVT performance is ideal for interior and exterior applications including canopy, warehouse and light commercial environments.



Catalog Number	Product Description	Replaces	CCT	Voltage	Lumens	Watts	Case QTY	Pallet QTY	ON	AB	PT	UPC	DLC
4APVTL-D-40L840	4ft, Vaportite, LED, 4000 lumen, UNV, Fixed Output, 4000K, Wet Location	2-T8 32W, 1-T5HO 54W	4000K	120/277V	5159	39	4	80	Yes	No	Yes	080083801305	PLZRPONZA9RE

F-Bay HBI

Metalux

The HBI series is an outstanding solution for high mounting height industrial or retail applications. The HBI optic has been optimized to provide maximum performance from T8 and T5 lamps. Optional uplight component is provided to enable excellent ceiling uniformity. HBI's high lumen package allows the benefits of fluorescent to be applied at high mounting heights that were traditionally exclusive to H.I.D. The primary benefits include exceptional color rendering, high system efficacy, 95% lumen maintenance, long lamp life, instant on/instant re-strike, Economical dimming, and uniform brightness control.



Catalog Number	Product Description	Replaces	CCT	Voltage	Lumens	Watts	Case QTY	Pallet QTY	ON	AB	PT	UPC
HBI454HT5-MP-UPL-L4	(4) 54W T5HO, Program Rapid Start CEE Listed, 120-277V, 4000K lamps, Uplight, V Hangers Provided, Modular Receptacle	4-T5HO 54W	4100K	120V/277V	17600	226	1	20	No	Yes	No	080083675043
HBI654HT5-MP-UPL-L4	(6) 54W T5HO, Program Rapid Start CEE Listed, 120-277V, 4000K lamps, Uplight, V Hangers Provided, Modular Receptacle	6-T5HO 54W	4100K	120V/277V	26400	300	1	20	No	Yes	No	080083675203

F-Bay HBL

Metalux

The HBL series is ideal for high mounting height industrial or retail applications. Advanced optical designs provide maximum performance from either T5 or T8 lamps. Optional uplight component produces excellent ceiling uniformity. HBL's high lumen package allows the benefits of fluorescent to be applied at high mounting heights that were traditionally exclusive to H.I.D.



Catalog Number	Product Description	Replaces	CCT	Voltage	Lumens	Watts	Case QTY	Pallet QTY	ON	AB	PT	UPC
HBL654HCT5-MP-UPL	(6) 54W T5HO Program Rapid Start CEE Listed, 347V , Uplight, V Hangers Provided, Modular Receptacle	6-T5HO 54W	Lamp Dependant	347V	Lamp Dependant	Lamp Dependant	1	36	Yes	No	No	080083552481
HBL654HT5-MP-UPL	(6) 54W T5HO Program Rapid Start CEE Listed, 120-277V , Uplight, V Hangers Provided, Modular Receptacle	6-T5HO 54W	Lamp Dependant	120V/277V	Lamp Dependant	Lamp Dependant	1	36	Yes	No	No	080083549825







F-Bay Accessories

Catalog Number	Product Description	Voltage	Case QTY	Pallet QTY	ON	AB	PT	UPC
MMS-OSFHUITW-120V/277V/347V	Modular motion sensor kit 120/277/347V operation, complete with modular cord (MC) and modular receptacle (MP) to connect with MP feature. Interchangeable lenses for high ceilings	120/277V/347V	6	192	Yes	No	No	080083590148
AYC-CHAIN/SET-U	(2) V Hooks & 36" Chain Set w/S Hooks		24	71424	Yes	Yes	Yes	080083545704
BKYT18-063-120K	Aircraft Cable Y-toggle 120" with Kwik Wire clamp		10	3000	Yes	Yes	Yes	78205167359
HBAYC-CHAIN/SET-U	(2) Hook-style V-Hangers, 36" Chain & (2) S-Hooks (HBI And HBL Only)		24	2400	Yes	Yes	Yes	080083575756

F-Bay Power Connections

Catalog Number	Product Description	Case QTY	Pallet QTY	ON	AB	PT	UPC
MC12	Modular Cord & Plug, 12' Length, Use with MP Option	20	480	Yes	Yes	No	080083552498
MC6	Modular Cord & Plug, 6' Length, Use with MP Option	60	1620	Yes	Yes	Yes	623961368455

Metalux Product Selection Guide

							
APPLICABILITY ¹	Big Box Retail	★	★	★★	★★	★	★★★
	Sports / Recreation	★★	★★	★★	★★★	★★	★★★
	Warehouses	★★★	★★★	★★	★★★	★★★	★★★
	Manufacturing	★★	★★	★★	★★★	★★★	★★★
	Cold Storage	★	★★★	★	★	★	★★★
	Large Indoor				★★	★★★	★★★
	Complex Environments		★	★★	★		
FEATURES / PERFORMANCE	Lumen Range Models	12,000 - 36,000	9,000 - 24,000	12,000 - 30,000	9,000 - 36,000	12,000 - 60,000	12,000 - 60,000
	Efficacy (Max)	140 lm/W	133 lm/W	137 lm/W	152 lm/W	186 lm/W	207 lm/W
	CRI	80	80	80	80	70, 80	70, 80, 90
	Distribution ¹	M	N, W	M	N, M, W	N, W	N, M, W
	Sizes	13' x 2' & 4'	< 2'	12" Dia	17" Dia	4'	Scalable
	Housing ²	CRS	CRS / Extruded	Diecast	CRS / Diecast	CRS	CRS
	Lensing	Acrylic	Polycarbonate	Polycarbonate	Polycarbonate	Optional	Acrylic
	Uplight	None	None	None	Up to 10%	None	None
	Life (@60K hrs)	L84	L83	L91	L88	L84	L96
	Ambient Range	-40°C to 40°C	-40°C to 40°C	-40°C to 45°C	-40°C to 55°C	-40°C to 55°C	-40°C to 55°C
	Emergency	None	Remote	None	Remote	Integrated	Integrated
	Ratings	Damp	Damp	IP65	IP65 Optics	Damp	Damp
	DLC	Premium	Standard	Standard	Premium	Premium	Premium
INTERGRATED CONTROLS	Basic Occupancy		✓		✓	✓	✓
	Stand Alone Daylight / Occupancy		✓		✓	✓	✓
	LumaWatt Pro ³		✓		✓	✓	✓
	WaveLinx		✓		✓	✓	✓

Notes: ★★=High Applicability, ★=Medium Applicability, ★=Low Applicability, 1. M=Medium, N=Narrow, G=General, W=Wide, P=Parking Garage. 2. CRS=Cold-rolled Steel, Extruded=Extruded Aluminum, Diecast=Diecast Aluminum. 3. Location data for asset tracking.

For certification information and to download this guide, visit eaton.com/MarketPro



HALO HOME™

HALO HOME™

Smart Lighting System

Downlight • Control • Outdoor • Lamp



Downlight



Control



Outdoor



Lamp



Eaton.com/HALOHome

HALO Home Smart Recessed Downlights

HALO Home

The HALO Home RL series integrated LED modules with Bluetooth mesh connectivity are designed in 4-inch and 5/6-inch aperture recessed downlights. Pair the modules with the HALO Home mobile app for wireless control and customization including ON/OFF, grouping, color tuning, dimming, scheduling, scenes and more. Customers can add HALO Home wall controllers for expanded smart functionality. Suitable for new construction, remodel and retrofit installation, the RL series is designed to connect to the HALO Home Bluetooth network with no hub required.



Catalog Number	Product Description	Replaces	Selectable CCT	Voltage	Lumens	Watts	Case QTY	Pallet QTY	ON	AB	PT	UPC
RL4069BLE40AWHR-C	4" LED Module, 90CRI, Bluetooth	60W INC	2700K-5000K	120V	600	8	6	588	Yes	Yes	Yes	080083873739
RL56069BLE40AWHR-C	5/6" LED Module, 90CRI, Bluetooth	65W INC	2700K-5000K	120V	600	9.7	6	300	Yes	Yes	Yes	080083873753

HALO Home Smart Surface Mount Downlight

HALO Home

Now, customers can enjoy all the benefits of smart lighting technology in a sleek, versatile surface mount. The HALO Home Smart Surface Mount Downlight is Bluetooth-enabled and ready to be grouped, programmed, and controlled with the HALO Home app. Unlike recessed lighting, there's no housing or "cans", making it an easy way to replace existing light fixtures with smart, energy-saving LED.



Catalog Number	Product Description	Replaces	Selectable CCT	Voltage	Lumens	Watts	Case QTY	Pallet QTY	ON	AB	PT	UPC
BLD4089BLE40AWH-C	4" Backlit LED Downlight, 800 lumen, Bluetooth	60W INC	2700K-5000K	120V	800	9.2	4	600	Yes	No	Yes	080083897209
BLD6089BLE40AWH-C	6" Backlit LED Downlight, 800 lumen, Bluetooth	60W INC	2700K-5000K	120V	800	9.3	4	400	Yes	No	Yes	080083897223



HALO Home Smart Controls and Accessories

HALO Home

These controls and accessories expand the convenience, reach and features of HALO Home. Add "Smart" devices to standard lights to bring them into the wireless network, enabling grouping and scheduling. Install HALO Home controls like the Scene Keypad, Anyplace and Accessory Dimmers to control HALO Home lights and lights connected to HALO Home "Smart" devices. Finally, extend the systems reach with the optional Bridge to enable voice control, secure remote access and IFTTT services.

Controls
HALO Home
devices



In-wall Accessory Dimmer

Control HALO Home lights or standard lights connected to "Smart" devices with this dimmer. Commission it to control ON/OFF & dimming for a single device or entire group of HALO Home-enabled lights.

HIWAC1BLE40AWH
*Wallplates not included

Controls
HALO Home
devices



Anyplace Dimmer

Battery operated = no wiring necessary! Place this remote dimmer anywhere in the home to control any HALO Home device or group.

HWAS1BLE40AWH

Controls
HALO Home
devices



Multi-Room Scene Keypad

Users can commission each of the 4 button to control a device/group/scene. Tap once for ON, twice for OFF along with dimming. Comes in either battery-powered or hardwired so it can be installed in any existing bank of switches or placed in-wall wherever centralized lighting control is desired.

HIWSKB1BLE40AWH
*Wallplates not included

Make standard fixtures smart with these HALO Home devices.

Only
use with
non-smart
lights



In-wall Smart Dimmer

Turn standard/non-smart lights into smart lights – enabling mobile ON/OFF, dimming, groups, scenes and schedules via Bluetooth, even when switched OFF at the dimmer.

HIWMA1BLE40AWH
*Wallplates not included

Only
use with
non-smart
lights



Smart Plug-in Lamp Dimmer

Conveniently control dimming and ON/OFF of standard floor and table lamp accessories.

HWP1BLE40AWH

Only
use with
non-smart
lights



Smart Light Adapter

Add to recessed LED fixtures to enable individual wireless control of standard lights with all of the HALO Home features. (Rated 15W MAX & recessed only)

HWAD1BLE40AWH

Smart Internet Access Bridge

Access your HALO Home lighting from anywhere by simply connecting the bridge to your Wi-Fi. Works with Amazon Alexa and Google Assistant for voice control. Requires a router, internet connection and HALO Home compatible products.



HWB1BLE40AWH

WORKS WITH:



works with the
Google Assistant



The power of "IF"

Want to get even more out of your HALO Home system? Experience new interactions between other smart devices and services in your home with "If This Then That".

For more information, visit ifttt.com/halohome



Catalog Number	Product Description	Voltage	Case QTY	Pallet QTY	ON	AB	PT	UPC
HIWAC1BLE40AWH	Wireless InWall Accessory Dimmer, White	120V	4	2220	Yes	Yes	Yes	080083826544
HWAS1BLE40AWH	4.0 Anyplace Switch, Gen 1 White		4	1920	Yes	Yes	Yes	080083811182
HIWSKB1BLE40AWH	Multi-Room Scene Keypad		4	1728	Yes	No	Yes	080083859986
HIWMA1BLE40AWH	Wireless InWall Dimmer, White	120V	4	1920	Yes	Yes	Yes	080083826520
HWP1BLE40AWH	Plug-In Lamp Dimmer, Bluetooth, White	120V	4	1920	Yes	No	Yes	080083826506
HWAD1BLE40AWH	Bluetooth Enabled 4.0 Adaptor Module	120V	4	1920	Yes	Yes	Yes	080083826568
HWB1BLE40AWH	Bluetooth Enabled 4.0 Smart Internet Access Bridge for Home, White	120V	4	576	Yes	Yes	Yes	080083811168

HALO Home Smart Outdoor Security Flood and Motion Flood

HALO Home

The HALO Home FTS outdoor security smart LED floodlight and MST motion-activated floodlight enhances security around the home and can be controlled via Bluetooth mesh connectivity through the free HALO Home mobile app. Customers can control one or multiple lights with grouping, scheduling, dimming and color tuning capabilities.



Catalog Number	Product Description	Replaces	Selectable CCT	Voltage	Lumens	Watts	Case QTY	Pallet QTY	ON	AB	PT	UPC
MST20C18B	180-Degree Bluetooth Motion Activated Outdoor LED Twin Flood Light, Bronze	2 x 100W INC	2700K-5000K	120V	2034	22.8	2	150	Yes	Yes	Yes	080083810512
MST20C18W	180-Degree Bluetooth Motion Activated Outdoor LED Twin Flood Light White	2 x 100W INC	2700K-5000K	120V	2034	22.8	2	150	Yes	Yes	Yes	080083810499

HALO Home Smart Bulb

HALO Home

With the HALO Home A19 Lamp, customers can enjoy the benefits of smart lighting in any fixture that accepts a standard light bulb. This Smart Lamp instantly transforms vanities, porch lights and more to smart, wireless-enabled fixtures.



Catalog Number	Product Description	Replaces	Selectable CCT	Voltage	Lumens	Watts	Case QTY	Pallet QTY	ON	AB	PT	UPC
HHA19089BLE40A	A19 Lamp with Tunable CCT (2700K-5000K), 800 Lumens	60W INC	2700K-5000K	120V	800	9.4	4	1536	Yes	No	Yes	080083885268



Recessed

HALO

Recessed Downlighting & Undercabinet Lighting

Direct Mount • Downlight • Surface Mount • Adjustable Downlight
Undercabinet • Housing/Trim



Direct Mount



Downlight



Surface Mount



Adjustable Downlight



Undercabinet



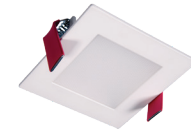
Housing/Trim



HLB LED Direct Mount Downlight

HALO

The HLB ultra-thin LED lens downlight series (3-inch, 4-inch and 6-inch sizes) features a remote driver/junction box suitable for new construction and remodel applications. The products easily install in drywall or a suspended ceiling, eliminating the need for a recessed can. The products install from below the ceiling in as little as 3-1/2-inch plenum height (1-1/2-inch for 3-inch) and can be used in direct contact with insulation. The modules are available in a choice of 3000K or 4000K, or choose a model with CCT selectable technology, allowing the user to choose from a range of five color temperatures from 2700K to 5000K via a switch.



HLB3S059301EMWR



HLB4069FS1EMWR-C



HLB6099FS1EMWR-C

Catalog Number	Product Description	Replaces	CCT	Voltage	Lumens	Watts	Case QTY	Pallet QTY	ON	AB	PT	UPC
HLB3S059301EMWR	3" SQ Lens, 500LM, 90 CRI, 3000K, 120V, MW	40W INC	3000K	120V	553	9	6	720	Yes	No	Yes	080083879021
HLB3059301EMWR	3" Round LED Direct Mount, 500LM, 90 CRI, 120V, MW	40W INC	3000K	120V	577	9	6	576	Yes	No	Yes	080083878925
HLB3059401EMWR	3" Round LED Direct Mount, 500LM, 90 CRI, 120V, MW	40W INC	4000K	120V	583	9	6	576	Yes	No	Yes	080083878963
HLB4069FS1EMWR-C	4" Round LED Direct Mount with Selectable CCT	65W INC	2700K-5000K	120V	752	12	6	630	Yes	Yes	Yes	080083856305
HLB6099FS1EMWR-C	6" Round LED Direct Mount with Selectable CCT	65W INC	2700K-5000K	120V	1103	16	6	450	Yes	No	No	080083856329
HLBSL4069FS231EMWR	4" Round LED Direct Mount with Selectable CCT	65W INC	2700K-3500K	120V	600		4	576	Yes	No	No	080083912346
HLBSL4069FS351EMWR	4" Round LED Direct Mount with Selectable CCT	65W INC	3000K-5000K	120V	600		4	576	Yes	No	No	080083916368
HLBSL6099FS231EMWR	6" Round LED Direct Mount with Selectable CCT	65W INC	2700K-3500K	120V	900		4	600	Yes	No	No	080083912360
HLBSL6099FS351EMWR	6" Round LED Direct Mount with Selectable CCT	65W INC	3000K-5000K	120V	900		4	600	Yes	No	No	080083916382

HLB LED Accessories

Catalog Number	Product Description	Case QTY	Pallet QTY	ON	AB	PT	UPC
HL4RSMF	4" round and square mounting frame	6	144	Yes	No	Yes	080083876167
HL6RSMF	6" round and square mounting frame	6	270	Yes	No	Yes	080083876181

RL Direct Mount Downlight

HALO

The RL is a regressed LED lens downlight with remote driver / junction box suitable for new construction and remodel applications. Field selectable color temperature and high color rendering provide excellent color performance. Simplified installation in drywall or suspended ceilings eliminates recessed cans saving time and money. Installs from below the ceiling in shallow plenum height, can be used in direct contact with insulation and is airtight.



RL4069S1EWHDM



RL6069S1EWHDM

Catalog Number	Product Description	Replaces	Selectable CCT	Voltage	Lumens	Watts	Case QTY	Pallet QTY	ON	AB	PT	UPC
RL4069S1EWHDM	4" Retrofit Baffle-Trim LED Module, 600 Series, 90CRI	60W INC	2700K; 3000K; 3500K; 4000K; 5000K;	120V	600	8.7	6	300	Yes	No	Yes	080083858101
RL6069S1EWHDM	6" Retrofit Baffle-Trim LED Module, 90CRI	60W INC	2700K; 3000K; 3500K; 4000K; 5000K;	120V	600	8.7	6	240	Yes	No	Yes	080083858125

Direct Mount Product Selection Guide



		SMD-DM	RL-DM	HLB	HLA
APPLICATION	Ultra-shallow Lens	✓		✓	
	General Area Illumination	✓	✓	✓	✓
	Wet Location	✓	✓	✓	✓
	New Construction	✓	✓	✓	✓
	Remodel	✓	✓	✓	✓
	Adjustable				✓

FEATURES / PERFORMANCE	Size / Shape	4 & 6" Round & Square	4" & 6" Round	3" & 4" & 6" Round & Square	4" Round & Square
	Lumens (Max)	800	600	1000	600
	Life (L70B50)	50K hours	50K hours	50K hours	50K hours
	CRI	90 (min)	90 (min)	90 (min)	90 (min)
	CCT (K)	27/30/35/40/50	27/30/35/40	27/30/35/40/50	27/30/35/40/50
	Spacing Criteria	1.4	1.2	1.4	1.2
	Input Voltage	120	120	120	120

CONTROL	Field Select (5) CCT		✓	✓	✓
	LE/TE Phase Cut	✓	✓	✓	✓

Visit [eaton.com/MarketPro](https://www.eaton.com/MarketPro) to download the Recessed Selection Guide.

RL LED Baffle Trim Downlight

HALO

The Halo RL Series is a complete LED baffle-trim module for 4-inch or 5/6-inch aperture recessed downlights. Ideal for new construction, remodel and retrofit installation, the integral LED driver offers 120V dimming capability and the lens provides uniform illumination and a wet location listing. The modules are available in a choice of 2700K or 3000K or choose the baffle-trim modules with CCT selectable technology that allows the user to choose from a range of five color temperatures from 2700K to 5000K via a switch.



RL460WH930-C



RL560WH6930-C

Catalog Number	Product Description	Replaces	CCT	Voltage	Lumens	Watts	Case QTY	Pallet QTY	ON	AB	PT	UPC
RL460WH930-C	4" Retrofit Baffle-Trim LED Module, 90CRI, 3000K	60W INC	3000K	120V	570	8	4	384	Yes	No	Yes	080083775767
RL460S1EWHR-C	4" Retrofit Baffle-Trim LED Module, 120V, 90CRI, Selectable CCT	60W INC	2700K-5000K	120V	600	8	4	588	Yes	No	Yes	080083856343
RL560WH6930-C	5"/6" Retrofit Baffle-Trim LED Module, 600 Series, 90CRI, 3000K	65W INC	3000K	120V	610	8	4	200	Yes	Yes	Yes	080083775798
RL560WH6940	5"/6" Retrofit Baffle-Trim LED Module, 90CRI, 4000K	60W INC	4000K	120V	600	8.7	6	288	Yes	Yes	Yes	080083710843
RL560S1EWHR-C	5"/6" Retrofit Baffle-Trim LED Module, 120V, 90CRI, Selectable CCT	60W INC	2700K-5000K	120V	600	7.6	4	300	Yes	No	Yes	080083856367
RL560WHZHA69-C	5"/6" Retrofit Baffle-Trim LED Module, 600 Series, 90CRI, Zigbee Home Automation, Selectable CCT	60W INC	2700K-5000K	120V	600	9.7	6	192	Yes	No	No	080083823383

ML56 LED Recessed Downlight

HALO

The ML56 LED downlight system is a flexible solution for your recessed lighting needs. High color fidelity 90 CRI modules are available in three lumen outputs and four color temperatures and because they are compatible with Halo LED housing and many other existing screw based housings, the ML56 LED system can be used in remodel, retrofit and new construction installations. An optional dim-to-warm (D2W™) feature creates an additional lighting solution as it provides a smooth warm transition from 3000K to 1850K when dimmed.



Catalog Number	Product Description	Replaces	CCT	Voltage	Lumens	Watts	Case QTY	Pallet QTY	ON	AB	PT	UPC
ML5612930	5"/6" LED Module, UNV, 1200 Series, 90CRI	100W INC	3000K	120V/277V	1200	17.5	6	252	Yes	No	Yes	080083654789
ML5612935	5"/6" LED Module, UNV, 1200 Series, 90CRI	100W INC	3500K	120V/277V	1200	17.5	6	252	Yes	No	Yes	080083654802
ML5612940	5"/6" LED Module, UNV, 1200 Series, 90CRI	100W INC	4000K	120V/277V	1200	17	6	288	Yes	No	Yes	080083654826

ML56 LED Accessories

Catalog Number	Product Description	Replaces	Case QTY	Pallet QTY	ON	AB	PT	UPC
692H	6" Trim, Reflector, Haze, White Trim	Reflector-Trim	6	300	Yes	Yes	Yes	080083634316
692SC	6" Trim, Reflector, Specular Clear, White Trim	Reflector-Trim	6	300	Yes	Yes	Yes	080083624003
693WB	6" Trim, White Baffle, White Trim	Reflector-Trim	6	300	Yes	No	Yes	080083634323

ML4 LED Recessed Downlight

HALO

The ML4 system is comprised of a housing, LED module, and round or square 2-inch aperture pinhole trim. This compact assembly installs from below the ceiling in standard 4-inch line voltage housings suitable for 2x6 residential framing or shallow plenum commercial construction. Although diminutive in size the ML4 delivers powerful beams of light providing the optical control and color quality typically associated with low voltage tungsten-halogen MR16 lamps and delivers over 900 lumens.



Catalog Number	Product Description	Replaces	CCT	Voltage	Lumens	Watts	Case QTY	Pallet QTY	ON	AB	PT	UPC
ML4D09NFL930E	4" LED Module, 900 Lumens, Narrow Flood, 90 CRI, LE/TE 5% Dimming	75W INC	3000K	120V/277V	900	11.9-12.1	6	2880	Yes	No	Yes	080083756643
ML4D09NFL935E	4" LED Module, 900 Lumens, Narrow Flood, 90 CRI, LE/TE 5% Dimming	75W INC	3500K	120V/277V	900	11.9-12.1	6	2520	Yes	No	Yes	080083756667

ML4 LED Accessories

Catalog Number	Product Description	Replaces	Case QTY	Pallet QTY	ON	AB	PT	UPC
TL42SMW	2" square open pinhole ML4 trim, matte white flange	Reflector-Trim	6	1260	Yes	No	Yes	080083755943
TL44S2GMWWB	2" square lens pinhole ML4 trim, matte white flange, white lens frame	Reflector-Trim	6	1728	Yes	No	Yes	080083756261

LT LED Retrofit Baffle Trim Downlight

HALO

The LT Series combines the energy savings, long life and sustainability of LED in an easy-to-install retrofit baffle trim kit. The modules are available in 4-inch and 5/6-inch sizes and supplied with torsion springs or friction blades to secure the trim tight to ceiling. The diffuse lens provides shielding to the source and a wet location listing; suitable for use in showers or in outdoor covered ceiling applications. The series is ideal for new construction, retrofit or remodel applications.



Catalog Number	Product Description	Replaces	CCT	Voltage	Lumens	Watts	Case QTY	Pallet QTY	ON	AB	PT	UPC
LT460WH6930R-C	4" Retrofit Baffle-Trim LED Module, 90CRI, 3000K	60W INC	3000K	120V	554	8	1	1	Yes	Yes	Yes	080083873692
LT560WH6930R-C	5"/6" Retrofit Baffle-Trim LED Module, 90CRI, 3000K	60W INC	3000K	120V	683	10	4	240	Yes	Yes	Yes	080083873715

CLD LED Surface Light

HALO

The Halo CLD is a easy to install, high performance, surface mount luminaire that offers the added flexibility of 3 selectable color temperatures at time of installation. CLD7 (7") is designed for installation in many 3-1/2" and 4" square, octagon, or round junction boxes. Supply wire adapter with LED quick wiring connector included.



Catalog Number	Product Description	Replaces	Selectable CCT	Voltage	Lumens	Watts	Case QTY	Pallet QTY	ON	AB	PT	UPC
CLD7089SWHR	7", 800 Lumens, 90 CRI, Select CCT 3	65W INC	3000K-5000K	120V	800	11.2	4	600	Yes	Yes	Yes	080083856763

SLD LED Surface Mount Module

HALO

The Halo Surface LED Downlight (SLD) incorporates WaveStream™ technology to create an ultra-low profile surface-mounting luminaire with the performance and look of a traditional downlight. Available in 4-inch and 6-inch sizes, the SLD is designed for installation in many standard and fire-rated junction boxes. A supply wire adapter with LED quick wiring connector is included. Suitable for residential or commercial installations, the SLD is ideal for closets, storage areas, attics and basements.



SLD405830WH



SLD606830WH



Catalog Number	Product Description	Replaces	CCT	Voltage	Lumens	Watts	Case QTY	Pallet QTY	ON	AB	PT	UPC
SLD405830WH	4" Surface LED Downlight, 120V, 80CRI, 3000K	60W INC	3000K	120V	750	12	6	540	Yes	Yes	Yes	080083697564
SLD405830WHJB	4" Surface LED Downlight, 120V, 80CRI, 3000K, Junction Box mount	60W INC	3000K	120V	750	12	6	300	Yes	No	Yes	080083705979
SLD606830WHJB	6" Surface LED Downlight, 120V, 80CRI, 3000K, Junction Box mount	65W INC	3000K	120V	760	12	6	300	Yes	Yes	Yes	080083705993
SLD606830WH	6" Surface LED Downlight, 120V, 80CRI, 3000K	65W INC	3000K	120V	760	12	6	360	Yes	Yes	Yes	080083697588
SLD612830WH	6" Surface LED Downlight, 120V, 80CRI, 3000K, 1200 Series	100W INC	3000K	120V	1200	14.8	6	300	Yes	No	Yes	080083714209
SLD612835WH	6" Surface LED Downlight, 120V, 80CRI, 3500K, 1200 Series	100W INC	3500K	120V	1200	14.8	6	300	Yes	No	Yes	080083714247

SMD LED Surface Mount Module

HALO

The Surface Mount LED Downlight (SMD) is an low-profile, surface-mounting luminaire with a modern look that provides high performance. The SMD is designed for installation with many square, octagon, or round junction boxes and a supply wire adapter with LED quick wiring connector is included.



SMD6R6930WH-C



SMD6S6930WH-C



Catalog Number	Product Description	Replaces	CCT	Voltage	Lumens	Watts	Case QTY	Pallet QTY	ON	AB	PT	UPC
SMD4R6930WH-C	4" Round Surface mount LED Module, 80CRI, 3000K	75W INC	3000K	120V	800	9.7	6	360	Yes	Yes	No	080083770380
SMD4S6930WH-C	4" Square Surface mount LED Module, 80CRI, 3000K	75W INC	3000K	120V	800	10	6	360	Yes	Yes	No	080083770427
SMD6R6930WH-C	6" Round Surface Mount LED Module, 80CRI, 3000K	75W INC	3000K	120V	800	9.6	6	240	Yes	Yes	Yes	080083771462
SMD6S6930WH-C	6" Square Surface Mount LED Module, 80CRI, 3000K	75W INC	3000K	120V	800	9.9	6	300	Yes	Yes	No	080083771509

BLD LED Surface Mount Module

HALO

The backlit downlight is a low-profile, high-performance surface mount luminaire that offers the added flexibility of seleCCTable color temperatures at time of installation. BLD4 (4-inch) and BLD6 (6-inch) are designed for installation in many 3-1/2-inch and 4-inch square, octagon, or round junction boxes. The BLD4/BLD6 may also retrofit in 4-inch, 5-inch and 6-inch aperture IC and Non-IC recessed housings. The user can choose from a range of five color temperatures from 2700K to 5000K via a switch.



BLD4089SWHR-C



BLD6089SWHR-C

Catalog Number	Product Description	Replaces	Selectable CCT	Voltage	Lumens	Watts	Case QTY	Pallet QTY	ON	AB	PT	UPC
BLD4089SWHR-C	4", 800 Lumens, 90CRI, Select CCT	65W INC	2700K-5000K	120V	802	10	4	560	Yes	No	Yes	080083867172
BLD6089SWHR-C	6", 800 Lumens, 90CRI Select CCT	65W INC	2700K-5000K	120V	812	10	4	320	Yes	No	Yes	080083867196

HLC LED Closet Light

HALO

The Halo HLC is a low profile, surface mount luminaire that offers easy below the ceiling installation to save time and money. The HLC4 Series is designed for installation in most 3-1/2" and 4" square, octagon, or round junction boxes. Supply wire adapter with LED quick wiring connector included. Sold as bulk packs only.



HLC4079301EWH-6BP



HLC6099301EWH-6BP

Catalog Number	Product Description	Replaces	CCT	Voltage	Lumens	Watts	Case QTY	Pallet QTY	ON	AB	PT	UPC
HLC4079301EWH-6BP	4" LED surface light, 750 Lumens, 3000K, 6 bulk pack	65W INC	3000K	120V	753	13	1	180	Yes	No	Yes	080083896387
HLC6099301EWH-6BP	6" LED surface light, 900 Lumens, 3000K, 6 bulk pack	100W INC	3000K	120V	925	16	1	100	Yes	No	Yes	080083896448

HU11 LED Undercabinet

HALO

The Halo HU11 Undercabinet gives homeowners clean contours to their kitchen and washroom cabinets with its sleek profile and low-glare optics. With the HU11's SeleCCTable tuning, homeowners can enjoy a uniform look to their kitchen lighting at an attractive price. Plug-in, direct-wire, easy-access mounts, and linkable install features make the HU11 DIY and contractor friendly across the board.



Catalog Number	Product Description	Selectable CCT	Voltage	Case QTY	Pallet QTY	ON	AB	PT	UPC
HU1109D9SP	9" Integrated Undercabinet, 3xSelectable CCT, Dimmable	2700K; 3000K; 4000K	120V	4	1152	Yes	No	Yes	080083875788
HU1118D9SP	18" Integrated Undercabinet, 3xSelectable CCT, Dimmable	2700K; 3000K; 4000K	120V	4	704	Yes	No	Yes	080083875863
HU1124D9SP	24" Integrated Undercabinet, Selectable CCT, Dimmable	2700K; 3000K; 4000K	120V	4	648	Yes	No	Yes	080083875948
HU1136D9SP	36" Integrated Undercabinet, 3xSelectable CCT, Dimmable	2700K; 3000K; 4000K	120V	4	320	Yes	No	Yes	080083876020
HU1148D9SP	48" Integrated Undercabinet, 3xSelectable CCT, Dimmable	2700K; 3000K; 4000K	120V	4	396	Yes	No	Yes	080083876105

HU11 Accessories

Catalog Number	Product Description	Voltage	Case QTY	Pallet QTY	ON	AB	PT	UPC
HU109P	Halo HU10-HU11 LED Undercabinet Splice Box, Lo-Pro, White	120V	10	1500	Yes	No	Yes	080083694358
HU115P	48" Power Cord - 120V only	120V	1	1	Yes	No	Yes	080083907083

H Series Housings

HALO

The H Series is the standard in the industry for both commercial and residential applications. Optimized and listed for EISA compliant tungsten-Halogen lamps, as well as Incandescent, CFL and LED lamps. For installation in insulated ceilings and non-insulated ceilings with airtight code compliant construction. Use with a variety of trims and finishes to create different lighting effects or to match any decor. The wide variety of trims available allows a number of different lighting effects to be created.



H5IRCAT



H99TAT

4" Housings

Catalog Number	Product Description	Voltage	Case QTY	Pallet QTY	ON	AB	PT	UPC
H99ICAT	4" Housing IC Air-Tite Shallow Ceiling 120V Line Voltage	120V	6	144	Yes	Yes	Yes	080083582259
H99RTAT	4" Housing Non-IC, Air-Tite Shallow Ceiling Remodel 120V Line Voltage	120V	6	252	Yes	Yes	Yes	080083584369
H99TAT	4" Housing Non-IC, Air-Tite Shallow Ceiling 120V Incandescent	120V	6	168	Yes	Yes	Yes	080083584260
H245ICAT	4" New work housing ultra-shallow for use with LED integrated trims	120V/277V	6	180	Yes	No	Yes	080083770717
H245RICAT	4" Housing ultra-shallow for use with LED integrated trims	120V/277V	6	540	Yes	No	Yes	080083756520
H457ICAT1E	4" LED Housing IC Air-Tite, Dimmable, 120V, for Halo EL406, ELG406, ELSG406 LED Light Engine	120V	6	108	Yes	Yes	Yes	080083692484
H457TATE010	4" LED Housing Non-IC, Air-Tite, 120V-277V, for Halo EL406, ELG406, ELSG406 LED Light Engines, 120V & 0-10VDC Dimmable	120V/277V	6	84	Yes	No	Yes	080083692521
H995ICAT	4" LED Housing IC Air-Tite Shallow Ceiling 120V Line Voltage	120V/277V	6	144	Yes	Yes	Yes	080083616930
H995RICAT	4" LED Remodel Housing IC Air-Tite Shallow Ceiling 120V Line Voltage	120V/277V	6	162	Yes	Yes	Yes	080083616947

5" Housings

Catalog Number	Product Description	Voltage	Case QTY	Pallet QTY	ON	AB	PT	UPC
H5ICAT	5" Housing IC Air-Tite 120V	120V	6	120	Yes	Yes	Yes	080083609413
H5RICAT	5" Housing Remodel IC Air-Tite 120V	120V	6	144	No	Yes	Yes	080083609444
H550ICAT	5" LED Housing, IC Air-Tite, for listed Halo LED Modules	120V/277V	6	120	Yes	Yes	Yes	080083626533

6" Housings

Catalog Number	Product Description	Voltage	Case QTY	Pallet QTY	ON	AB	PT	UPC
H7ICAT	6" Housing IC Air-Tite 120V Line Voltage Incandescent	120V	6	120	Yes	Yes	Yes	080083609628
H7RT	6" Housing Non-IC Remodel Housing 120V Line Voltage	120V	6	144	Yes	Yes	Yes	662400600725
H7T	6" Housing Non-IC 120V Line Voltage	120V	6	120	Yes	Yes	Yes	080083609727
H750T	6" LED Housing, Non-IC, for listed Halo LED Modules	120V/277V	6	120	Yes	Yes	Yes	623961052224

E Series Housings

HALO

The E Series is a compact and efficient recessed housing family optimized and listed for EISA compliant tungsten-halogen lamps, as well as INC, CFL and LED lamps. The housings are suitable for new or retrofit residential or light commercial construction. The housings are designed for installation in insulated ceilings or non-insulated ceilings with airtight code compliant construction and can be used with a variety of trims and finishes to create different lighting effects or to match any decor. The family includes ultra-shallow housings for application with limited plenum space.



4" Housings

Catalog Number	Product Description	Voltage	Case QTY	Pallet QTY	ON	AB	PT	UPC
E4ICATSB	4" IC, Air-Tite, New Construction Housing, 120V w/ Socket Bracket	120V	6	108	Yes	No	Yes	080083751525
E4TATSB	4" NON-IC, Air-Tite, New Construction Housing, 120V w/ Socket Bracket	120V	6	168	No	Yes	Yes	080083751488

5" Housings

Catalog Number	Product Description	Voltage	Case QTY	Pallet QTY	ON	AB	PT	UPC
E5ICAT	5" IC, Air-Tite, New Construction Housing, 120V	120V	6	144	Yes	No	Yes	080083737420
E5RICAT	5" IC, Air-Tite, Remodel Housing, 120V	120V	6	180	Yes	No	Yes	080083737307
E5TAT	5" NON-IC, Air-Tite, New Construction Housing, 120V	120V	6	144	Yes	No	Yes	080083737369

6" Housings

Catalog Number	Product Description	Voltage	Case QTY	Pallet QTY	ON	AB	PT	UPC
E7ICAT	6" IC, Air-Tite, New Construction Housing, 120V	120V	6	144	Yes	Yes	Yes	080083737727
E7RICAT	6" IC, Air-Tite, Remodel Housing, 120V	120V	6	144	Yes	No	Yes	080083737543
E7TAT	6" NON-IC, Air-Tite, New Construction Housing, 120V	120V	6	144	Yes	No	Yes	080083737666

4", 5" and 6" Trims

HALO

Baffle, Gimbal, Coilex, Splay, Cone, Slope and Open Socket baffle trims are an ideal solution to shape light to minimize aperture glare and reduce ceiling brightness. Open trims focus the downlighting beam to provide uniform distribution. The trims can be used in new construction and remodel housings. The lensed shower trims are wet location listed.



4" Trims

Catalog Number	Product Description	Case QTY	Pallet QTY	ON	AB	PT	UPC
951PS	4" Trim Lensed Showerlight 120V White Trim with Glass Lens	6	480	Yes	Yes	Yes	622697283117
985GUWHT	4" Trim Flush Gimbal Gloss White Trim, GU10	12	12	Yes	Yes	No	622696814497
987WHT	4" Trim Flush Gimbal Gloss White Trim, PAR20	12	12	Yes	Yes	No	622696814480
993W	4" Trim Coilex Baffle White Trim with White Baffle	6	840	Yes	Yes	Yes	080083628483
997P	4" Trim Flush Gimbal Satin White Trim, PAR20	12	12	Yes	Yes	Yes	622696501182
999H	4" Trim Reflector Cone White Trim with Haze Reflector	12	672	No	Yes	Yes	622696606221
999P	4" Trim Reflector Cone White Trim with Specular Clear Reflector	12	840	Yes	Yes	Yes	662400320586

5" Trims

Catalog Number	Product Description	Case QTY	Pallet QTY	ON	AB	PT	UPC
5001P	5" Trim Metal Splay Baffle White Trim with White Baffle	6	360	Yes	Yes	Yes	662400602729
5060P	5" Trim Gimbal White Trim with White Gimbal	6	750	Yes	Yes	Yes	662400610700
5102WB	5" White Tapered Metal Baffle, White Self-Flange Ring	6	1512	Yes	No	Yes	080083743841
5107SC	5" Specular Clear Tapered Reflector, White Self-Flange Ring	6	1512	Yes	No	Yes	080083743858

6" Trims

Catalog Number	Product Description	Case QTY	Pallet QTY	ON	AB	PT	UPC
426	6" Trim Reflector Cone White with Clear Specular Reflector Cone	6	360	Yes	Yes	Yes	662400131311
310W	6" Trim Coilex Baffle White Trim with White Baffle	6	360	Yes	Yes	Yes	080083515882
6100WB	6" White Tapered Metal Baffle, 2-White Rings Narrow & Wide	18	900	Yes	No	Yes	080083743452





Recessed

HALO Commercial Downlight



Downlight



PR6 Selectable Lumen & CCT Downlight Series

HALO Commercial

PR6 series 6-inch lensed LED downlight delivers with available new construction, retrofit, and surface cylinder models. The PR6 series LED modules feature field selectable color temperatures, field selectable lumens, plus medium and wide beam interchangeable lens option included for ultimate flexibility. Select from low lumen 1000-1500-2000 lm range or high lumen 2000-3000-4000 lm range; and 3000K/3500K/4000K CCT. Paint finishes include matte white, matte metallic silver, and dark bronze. Universal input 120V-277V driver with 0-10V 1% dimming. Specify two parts: 1) a housing, retrofit, or cylinder and 2) a LED module; ordered separately to complete the luminaire.



Catalog Number	Product Description	Replaces	Selectable CCT	Voltage	Selectable Lumens (up to)	Case QTY	Pallet QTY	ON	AB	PT	UPC
PR6FS12D010	6" aperture new construction/remodeler housing frame, field selectable (1000-2000 lumens), 0-10V Dim	150W INC, 2-26W CFL		120V/ 277V	1000, 1500, 2000	6	72	Yes	No	Yes	080083892174
PR6FS24D010	6" aperture new construction/remodeler housing frame, field selectable (2000-4000 lumens), 0-10V Dim	150W INC, 2-42W BX		120V/ 277V	2000, 3000, 4000	6	72	Yes	No	Yes	080083892167
PR6M12MD9FSMW	6" LED module, 1000-2000 lumens, 90 CRI, 3000K, 3500K and 4000K CCT selectable, matte white reflector and trim	150W INC, 2-26W CFL	3000K; 3500K; 4000K	120V/ 277V	1000, 1500, 2000	6	72	Yes	No	Yes	080083891061
PR6M24MD9FSMW	6" LED module, 2000-4000 lumens, 90 CRI, 3000K, 3500K and 4000K CCT selectable, matte white reflector and trim	150W INC, 2-42W BX	3000K; 3500K; 4000K	120V/ 277V	2000, 3000, 4000	6	72	Yes	No	Yes	080083891030
PR6RFS12D010	6" aperture retrofit kit frame arm with integrated junction box and driver, field selectable lumens (1000-2000), 0-10 Dim	150W INC, 2-26W CFL		120V/ 277V	1000, 1500, 2000		72	Yes	No	Yes	080083891726

PR8 Selectable CCT Downlight Series

HALO Commercial

8-inch shallow lensed LED downlight in 1000 to 4000 lumens, with medium beam lens. SeleCCTable™ technology allows selectable color temperatures of 3000K/3500K/4000K. Order LED module based on the chosen housing lumens (housing & module are not selectable lumens). Installation options: new construction/remodel housing, retrofit, and surface cylinder.



Catalog Number	Product Description	Replaces	Selectable CCT	Voltage	Selectable Lumens (up to)	Case QTY	Pallet QTY	ON	AB	PT	UPC
PR8M12WDMW	8" LED module for PR8 series, provides 1000, 1500 or 2000 lumens (nominal) depending on connected frame type, wide distribution lens	150W INC, 2-26W CFL	3000K; 3500K; 4000K	Low Voltage	1000, 1500, 2000	6	180	Yes	No	Yes	080083772964

*Use with 1000-1500-2000lm housings, retrofits, cylinders. ** Use with 3000-4000lm housings, retrofits, cylinders.

HC4 LED Downlight Series

HALO Commercial

Recessed 4 inch aperture LED downlight for new construction or remodel application. Use with narrow, medium, or wide beam reflectors; or wall wash reflector. LED module features integral lens, with damp and wet location listing in protected ceilings. IC rated 1000 and 1500 lumen models are suitable for direct contact with air-permeable insulation. Other models are Non-IC, and must have insulation kept 3" from top and sides of housing. Universal input 120V-277V driver with 0-10V 1% dimming. Specify housing, LED module, and trim separately to complete the luminaire.



Catalog Number	Product Description	Replaces	CCT	Voltage	Lumens	Watts	Case QTY	Pallet QTY	ON	AB	PT	UPC
HC410D010	Recessed 4" LED downlight, 1000 lumens, 120-277VAC, 0-10V Dim	150W INC, 2-26W CFL		120V/ 277V	1000	10.1	6	36	Yes	No	Yes	080083860586
HC415D010	Recessed 4" LED downlight, 1500 lumens, 120-277VAC, 0-10V Dim	150W INC, 2-26W CFL		120V/ 277V	1500	14.2	6	36	Yes	No	Yes	080083860609
HC420D010	Recessed 4" LED downlight, 2000 lumens, 120-277VAC, 0-10V Dim	150W INC, 2-42W BX		120V/ 277V	2000	21.1	6	36	Yes	No	Yes	080083860623
HC430D010	Recessed 4" LED downlight, 3000 lumens, 120-277VAC, 0-10V Dim	150W INC, 2-42W BX		120V/ 277V	3000	27.2	6	36	Yes	No	Yes	080083860654
HC440D010	Recessed 4" LED downlight, 4000 lumens, 120-277VAC, 0-10V Dim	150W INC, 2-42W BX		120V/ 277V	4000	41.3	6	36	Yes	No	Yes	080083861064
HM412835	4" LED module, 1000,1500,2000 lumens, 80 CRI, 3500K CCT	150W INC, 2-26W CFL	3500K	120V/ 277V	1000, 1500, 2000		6	240	Yes	No	Yes	080083855704
HM412840	4" LED module, 1000,1500,2000 lumens, 80 CRI, 4000K CCT	150W INC, 2-26W CFL	4000K	120V/ 277V	1000, 1500, 2000		6	240	Yes	No	Yes	080083855728
HM434835	4" LED module, 3000 and 4000 lumens, 80 CRI, 3500K CCT	150W INC, 2-42W BX	3500K	120V/ 277V	3000, 4000		6	240	Yes	No	Yes	080083856206
HM434840	4" LED module, 3000 and 4000 lumens, 80 CRI, 4000K CCT	150W INC, 2-42W BX	4000K	120V/ 277V	3000, 4000		6	240	Yes	No	Yes	080083856107

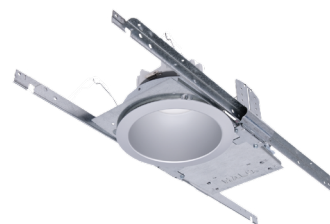
HC4 Accessories

Catalog Number	Product Description	Case QTY	Pallet QTY	ON	AB	PT	UPC
41MDC	4" conical Reflector, medium 60° beam angle, Specular clear, Polished flange	6	144	Yes	No	Yes	080083850167
41MDHWF	4" conical Reflector, medium 60° beam angle, Semi-Specular clear, White flange	6	108	Yes	No	Yes	080083850242
41NDC	4" conical Reflector, narrow 50° beam angle, Specular clear, Polished flange	6	108	Yes	No	Yes	080083850068
41RWWC	4" conical Reflector, rotatable wall wash, Specular clear, Polished flange	6	108	Yes	No	Yes	080083850747
41WDC	4" conical Reflector, wide 75° beam angle, Specular clear, Polished flange	6	108	Yes	No	Yes	080083850266
41WDCWF	4" conical Reflector, wide 75° beam angle, Specular clear, White flange	6	108	Yes	No	Yes	080083850365
41WDHWF	4" conical Reflector, wide 75° beam angle, Semi-Specular clear, White flange	6	108	Yes	No	Yes	080083850389

HC6 LED Downlight Series

HALO Commercial

Recessed 6 inch aperture LED downlight for new construction or remodel application. Available in narrow, medium, or wide beam reflectors; or wall wash reflector. LED module features integral lens, with damp and wet location listing in protected ceilings. IC rated 1000 and 1500 lumen models are suitable for direct contact with air-permeable insulation. Other models are Non-IC, and must have insulation kept 3" from top and sides of housing. Universal input 120V-277V driver with 0-10V 1% dimming. Specify housing, LED module, and reflector separately to complete the luminaire.

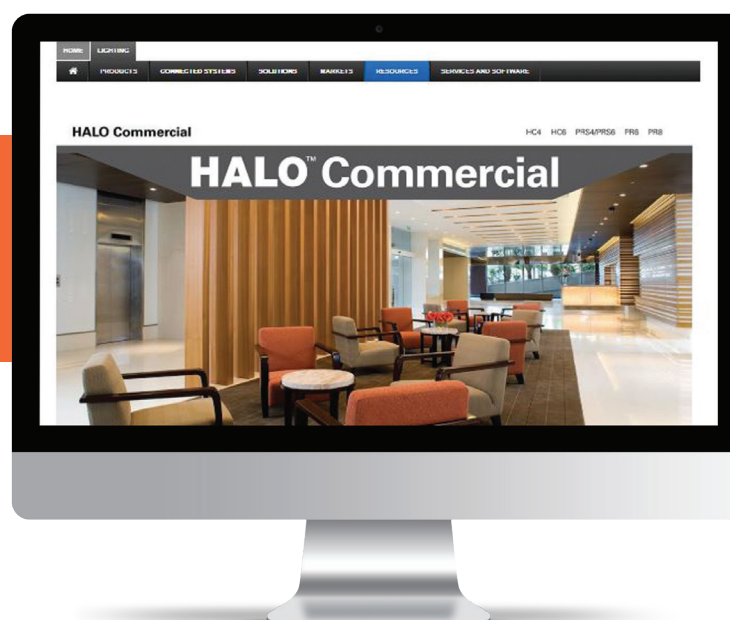


Catalog Number	Product Description	Replaces	CCT	Voltage	Lumens	Case QTY	Pallet QTY	ON	AB	PT	UPC
HC610D010	Recessed 6" LED downlight, 1000 lumens, 120-277VAC, 0-10V Dim	150W INC, 2-26W CFL		120V/277V	1000	6	36	Yes	No	Yes	080083883646
HC615D010	Recessed 6" LED downlight, 1500 lumens, 120-277VAC, 0-10V Dim	150W INC, 2-26W CFL		120V/277V	1500	6	36	Yes	No	Yes	080083883660
HC620D010	Recessed 6" LED downlight, 2000 lumens, 120-277VAC, 0-10V Dim	150W INC, 2-26W CFL		120V/277V	2000	6	36	Yes	No	Yes	080083883684
HM612830	6" LED module, 1000,1500,2000 lumens, 80 CRI, 3000K CCT	150W INC, 2-26W CFL	3000K	120V/277V	1000, 1500, 2000	6	240	Yes	No	Yes	080083855889
HM612835	6" LED module, 1000,1500,2000 lumens, 80 CRI, 3500K CCT	150W INC, 2-26W CFL	3500K	120V/277V	1000, 1500, 2000	6	756	Yes	No	Yes	080083856022
HM612840	6" LED module, 1000,1500,2000 lumens, 80 CRI, 4000K CCT	150W INC, 2-26W CFL	4000K	120V/277V	1000, 1500, 2000	6	756	Yes	No	Yes	080083856268

HC6 Accessories

Catalog Number	Product Description	Case QTY	Pallet QTY	ON	AB	PT	UPC
61MDC	6" conical Reflector, medium 60° beam angle, Specular clear, Polished flange	6	192	Yes	No	Yes	080083850969
61NDC	6" conical Reflector, narrow 55° beam angle, Specular clear, Polished flange	6	192	Yes	No	Yes	080083850860
61NDCWF	6" conical Reflector, narrow 55° beam angle, Specular clear, White flange	6	192	Yes	No	Yes	080083850921
61WDC	6" conical Reflector, wide 65° beam angle, Specular clear, Polished flange	6	192	Yes	No	Yes	080083851065
61WDCWF	6" conical Reflector, wide 65° beam angle, Specular clear, White flange	6	192	Yes	No	Yes	080083851164

» Visit Eaton.com/HCTools to learn more about HALO Commercial solutions



Recessed

HALO Track and Surface Track Lighting



Track Light



L1730 Gimbal Ring

HALO Track and Surface

The Gimbal series of lampholders is designed for use with Halo Linea and Lazer track Systems and utilizes standard PAR and halogen PAR lamp technology. Front loading of the lamp allows ease of relamping. Ideal for accent and dramatic display applications. Trim options include color filters, optical lenses, barn door, louver and baffle.



Catalog Number	Product Description	Voltage	Watts	Case QTY	Pallet QTY	ON	AB	PT	UPC
L1730PX	Gimbal Ring, White, PAR30	120V	70	6	360	Yes	No	Yes	662400144038
L1730MBX	Gimbal Ring, Matte Black, PAR30	120V	70	6	360	Yes	No	Yes	662400144014

LZR330 Lazer Gimbal Ring

HALO Track and Surface

Halo Gimbal lampholders are designed for use with Halo Power-Track and Lazer-by-Halo track systems. Halo Gimbal lampholders utilize standard PAR and halogen PAR lamp technology. Front loading lamp design allows for ease of relamping. They are available in white or black finish and are ideal for accent and display lighting applications.



Catalog Number	Product Description	Voltage	Watts	Case QTY	Pallet QTY	ON	AB	PT	UPC
LZR330MB	Lazer Small Gimbal Ring, Matte Black, PAR30	120V	75	6	360	Yes	Yes	Yes	662400613305
LZR330P	Lazer Small Gimbal Ring, White, PAR30	120V	75	6	384	Yes	Yes	Yes	662400613299
LZR338MB	Lazer Gimbal Ring, Matte Black, PAR38	120V	150	6	270	Yes	Yes	Yes	662400613329
LZR338P	Lazer Gimbal Ring, White, PAR38	120V	150	6	270	Yes	Yes	Yes	662400613312

L70 Universal Lamp Holder

HALO Track and Surface

This Universal lampholder family from Halo provides a broad range of clean, stylish lighting. The specialized accessories make possible a customized lighting effect and lampholder look. Lampholders are offered in a symmetrical and an asymmetrical version and are for use with Halo, Power-Trac and Lazer-by-Halo track systems.



Catalog Number	Product Description	Voltage	Watts	Case QTY	Pallet QTY	ON	AB	PT	UPC
L702MBX	Universal Lampholder 3", Matte Black, R, PAR16, PAR20, PAR30L, PAR38	120V/ 277V	Lamp Dependant	24	720	Yes	No	Yes	662400164333
L703MBX	Universal Lampholder, 2.4", Matte Black, R, PAR16, PAR20, PAR30L, PAR38	120V	Lamp Dependant	24	648	Yes	No	Yes	662400301394
L703PX	Universal Lampholder, 2.4", White, R, PAR16, PAR20, PAR30L, PAR38	120V	Lamp Dependant	24	576	Yes	No	Yes	662400301387

L90 Single Circuit Connectors

HALO Track and Surface

Miniature size, decorator finishes, push-in connectors, Economy, all combine to make single-circuit Miniature Trac perfect for residential or commercial use. To ensure safe operation the entire track system is fully polarized and grounded. L's, T's and X's allow track to be assembled in almost any pattern.



L901



L903



L904



L908

Catalog Number	Product Description	Case QTY	Pallet QTY	ON	AB	PT	UPC
L901MB	Live End Connector, Single Circuit, Matte Black	6	192	Yes	Yes	Yes	662400140825
L901P	Live End Connector, Single Circuit, White	12	2160	Yes	Yes	Yes	662400140832
L903P	Straight Connector, Single Circuit, White	12	4032	Yes	Yes	Yes	662400140900
L904P	L Connector, Single Circuit, White	12	192	Yes	Yes	Yes	662400140931
L908MB	Mini Joiner, Single Circuit, Matte Black	12	192	Yes	No	Yes	662400141037
L908P	Mini Joiner, Single Circuit, White	12	192	Yes	Yes	Yes	662400141044

L650 Single Circuit Track

HALO Track and Surface

Miniature size, decorator finishes, push-in connectors, Economy, all combine to make single-circuit Miniature Trac perfect for residential or commercial use. To ensure safe operation the entire track system is fully polarized and grounded. L's, T's and X's allow track to be assembled in almost any pattern.



Catalog Number	Product Description	Voltage	Case QTY	Pallet QTY	ON	AB	PT	UPC
L651MB	Single Circuit Track, 4ft, Matte Black	120V	1	150	Yes	Yes	Yes	662400137672
L651P	Single Circuit Track, 4ft, White	120V	1	625	Yes	Yes	Yes	662400137689
L656P	Single Circuit Track, 6ft, White	120V	1	150	Yes	No	Yes	662400605546
L652MB	Single Circuit Track, 8ft, Matte Black	120V	1	228	Yes	Yes	Yes	662400137764
L652P	Single Circuit Track, 8ft, White	120V	1	228	Yes	Yes	Yes	662400137771
L653MB	Single Circuit Track, 12ft, Matte Black	120V	1	300	Yes	Yes	Yes	662400137818
L653P	Single Circuit Track, 12ft, White	120V	1	300	Yes	Yes	Yes	662400137825

Outdoor

Lumark / HALO Outdoor Residential & Commercial / Industrial Floodlight • Area/Site • Wall Mount • Ceiling Mount



Floodlight



Area/Site



Wall Mount



Parking Garage/Canopy



FSS/FSL Single Head LED Flood

Halo Outdoor

The HALO Outdoor LED single head floodlight utilizes selectable CCT functionality, advanced optics and multiple mounting options for a versatile outdoor lighting solution. Multiple lumen packages and integrated control options address a wide range of outdoor general lighting and security applications. The durable die-cast aluminum housing is available in bronze or white powder coat finish, ensuring years of reliable, maintenance-free performance.



Catalog Number	Product Description	Replaces	Selectable CCT	Voltage	Lumens	Watts	Case QTY	Pallet QTY	ON	AB	PT	UPC
FSL203TB	Large Single Flood, 3T, BZ	180W INC	3000K; 4000K; 5000K	120V/ 277V	1916	23	2	180	Yes	No	Yes	080083809677

MST203T Twin LED with Motion Sensor

Halo Outdoor

The Halo MST203 outdoor security floodlight incorporates an adjustable motion sensor, field-selectable CCT, and advanced two-stage optics into a twin head LED design ideal for a wide variety of applications. Features improved adjustability, easy install components, and adaptor plate kit for hassle-free installation. The motion sensor is available with 180° or 270° detection up to 50' range, with adjustable sensitivity and duration from 1-12 minutes. The durable die-cast aluminum housing is available in bronze or white powder coat finish, ensuring years of reliable, maintenance-free operation.



MST203T18W

MST203T18B



Catalog Number	Product Description	Replaces	Selectable CCT	Voltage	Lumens	Watts	Case QTY	Pallet QTY	ON	AB	PT	UPC
MST203T18B	Twin Flood, 180 PIR, 3T, BZ	180W INC	3000K; 4000K; 5000K	120V	2034	23	2	150	Yes	Yes	Yes	080083810161
MST203T18W	Twin Flood, 180 PIR, 3T, WH	180W INC	3000K; 4000K; 5000K	120V	2034	23	2	150	Yes	No	Yes	080083810185

NFFLD Night Falcon

Lumark

The Night Falcon™ LED floodlight luminaire combines high-efficiency optics, superior thermal management and energy efficiency in a cost effective solution. The compact, robust design incorporates a separate driver compartment for maximum heat dissipation resulting in longer fixture and LED life. The Night Falcon luminaire is UL/cUL listed for wet locations and is IP66 and 3G vibration rated.



NFFLD-S



NFFLD-L



NFFLD



Catalog Number	Product Description	Replaces	CCT	Voltage	Lumens	Watts	Case QTY	Pallet QTY	ON	AB	PT	UPC	DLC
NFFLD-S-C15-T-UNV	Flood, 52W, 4000K, 120-277V, 6x6, Trunnion, Carbon Bronze	150W HID	4000K	120V/ 277V	5797	51	1	36	Yes	No	Yes	080083760275	P07DFEUO
NFFLD-C25-T	Flood, 85W, 4000K, 120-277V, Trunnion, Carbon Bronze	250W HID	4000K	120V/ 277V	10530	85	1	24	Yes	Yes	Yes	080083801220	P1KJC5UE
NFFLD-C40-S	Flood, 129W, 4000K, 120-277V, 6x6, Slipfitter, Carbon Bronze	400W HID	4000K	120V/ 277V	16932	129	1	20	Yes	Yes	Yes	080083801206	P6WY96JR
NFFLD-C40-T	Flood, 129W, 4000K, 120-277V, 6x6, Trunnion, Carbon Bronze	400W HID	4000K	120V/ 277V	16932	129	1	20	Yes	Yes	Yes	080083801183	P1FRZ85N
NFFLD-C40-T-347	Flood, 129W, 347V, 4000K, Trunnion, Carbon Bronze	400W HID	4000K	347V	16932	129	1	20	Yes	Yes	No	080083801060	PED3W9S8
NFFLD-L-C100-T	Flood, 252W, 4000K, 120-277V, 6x6, Trunnion, Carbon Bronze	1,000W HID	4000K	120V/ 277V	33941	252	1	6	Yes	No	Yes	080083800902	PWOBVSIR

CTKR Caretaker LED

Lumark

The Caretaker LED area luminaire combines high performance, low maintenance and easy installation in a simple, extremely economic package that has been designed for years of worry-free operation. The Caretaker luminaire is ideal for pole or wall mounted security lighting, residential street lighting, perimeter area lighting, parking areas, loading platforms, boat docks, access drives or pathways.



Catalog Number	Product Description	Replaces	CCT	Voltage	Lumens	Watts	Case QTY	Pallet QTY	ON	AB	PT	UPC	DLC
CTKRV1B	29W, 4500 lumens, UNV, Dimming, Photocontrol	150W HID	4000K	120V/277V	4515	29	1	48	Yes	No	Yes	080083865390	P9G7NN3C
CTKRV2B	50W, 7100 lumens, UNV, Dimming, Photocontrol	175W HID	4000K	120V/277V	7110	50	1	40	Yes	No	Yes	080083865406	PRSAJP8E
CTKRV3B	71W, 9700 lumens, UNV, Dimming, Photocontrol	250W HID	4000K	120V/277V	9741	71	1	48	Yes	No	Yes	080083865413	P3P0FHML



CTKR Caretaker Accessory

Catalog Number	Product Description	Case QTY	Pallet QTY	ON	AB	PT	UPC
SR-CARETAKER	Caretaker Small Acrylic Refractor	4	200	Yes	Yes	Yes	080083699087

PRV Prevail LED

Lumark

Utilizing the latest LED technology, the Prevail luminaire delivers unparalleled uniformity resulting in greater pole spacing. A versatile mount standard arm facilitates ease of installation for both retrofit and new installations. With energy savings greater than 85%, the Prevail fixture replaces 150-1,000W metal halide fixtures in general area lighting applications such as parking lots, walkways, roadways and building areas.

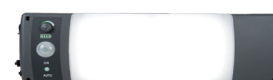


Catalog Number	Product Description	Replaces	CCT	Voltage	Lumens	Watts	Case QTY	Pallet QTY	ON	AB	PT	UPC	DLC
PRVS-C40-UNV-T3	17,100 lumens, T3, 4000K, 120-277V, Standard Mounting Arm	400W HID	4000K	120V/277V	17144	131	1	14	Yes	Yes	Yes	080083897346	PFLCEN3P
PRVS-C40-347-T3	17,100 lumens, T3, 4000K, 347V, Standard Mounting Arm	400W HID	4000K	347V	17144	131	1	16	Yes	No	Yes	080083897483	PKBPW82Y

Solar Wrap

Halo Outdoor

The Diverge™ off-grid lighting system is a portable solution, utilizing rechargeable lithium-ion battery technology and multiple charging options for a wide range of applications. Delivering an impressive 2400 lumens at full charge, the fixture offers an integrated dimming control, 360 degree motion sensor, polycrystalline solar panel with 20' cord and two USB interfaces for charging purposes. Suitable for storage, marine, remote location and area lighting where 120V wiring is not available.



Catalog Number	Product Description	Replaces	CCT	Lumens	Case QTY	Pallet QTY	ON	AB	PT	UPC
SLWP2040M	2400 Lumens, 4000K, 360 Degree Motion Sensor, 80 min run time	2-T8 17W (2')	4000K	2400	2	64	Yes	No	Yes	080083859863

Crosstour LED Wall Pack

Lumark

The Crosstour LED wall pack series provides an architectural style with super bright, energy-efficient LEDs. The Crosstour series features low-profile, rugged die-cast aluminum construction, universal back box, stainless steel hardware along with a sealed and gasketed optical compartment, making the product impervious to contaminants. The wall luminaire is ideal for surface or inverted mount for facade/canopy illumination, post/bollard mounting and for low level pathway illumination including stairs. Typical applications include building entrances, multi-use facilities, apartment buildings, institutions, schools, stairways and loading docks.



Catalog Number	Product Description	Replaces	CCT	Voltage	Lumens	Watts	Case QTY	Pallet QTY	ON	AB	PT	UPC	DLC
XTOR1B	12W, Small Housing, Full Cutoff, 5000K	70W HID	5000K	120/277V	1418	12	6	324	Yes	Yes	Yes	080083777969	PRVAZAZR
XTOR2B	18W, Small Housing, Full Cutoff, 5000K	100W HID	5000K	120/277V	2135	18	6	270	Yes	Yes	Yes	080083778225	PGP4FYV3
XTOR2B-347V	18W, Small Housing, Full Cutoff, 5000K	100W HID	5000K	347V	2135	18	6	240	Yes	No	No	080083778232	PGP4FYV3
XTOR2B-PC1	18W, Small Housing, Full Cutoff, 5000K, 120V PC	100W HID	5000K	120/277V	2135	18	6	240	No	Yes	Yes	080083778249	PGP4FYV3
XTOR3B	26W, Small Housing, Full Cutoff, 5000K	150W HID	5000K	120/277V	2751	26	6	270	Yes	Yes	Yes	080083778041	PWFZHYJH
XTOR3B-347V	26W, Small Housing, Full Cutoff, 5000K	150W HID	5000K	347V	2751	26	6	270	Yes	Yes	No	080083778386	PWFZHYJH
XTOR4B	38W, Medium Housing, Full Cutoff, 5000K	250W HID	5000K	120/277V	4269	38	6	216	Yes	Yes	Yes	080083778003	PUJ1NXGY
XTOR6B	58W, Wall Mount, Full Cutoff Door, 5000K	320W HID	5000K	120/277V	6129	58	2	72	Yes	Yes	Yes	080083774807	PWEKQNMY
XTOR6BRL	58W, Wall Mount, Refractive Lens, 5000K	320W HID	5000K	120/277V	6225	58	2	54	Yes	Yes	Yes	080083774821	PH59ANRG
XTOR6BRL-347V	58W, Wall Mount, Refractive Lens, 5000K, 347V	320W HID	5000K	347V	6225	58	2	54	Yes	Yes	No	080083777181	PH59ANRG
XTOR8B	81W, Wall Mount, Full Cutoff Door, 5000K	400W HID	5000K	120/277V	8502	81	2	54	Yes	Yes	Yes	080083774814	P5557CRH
XTOR8BRL	81W, Wall Mount, Refractive Lens, 5000K	400W HID	5000K	120/277V	8635	81	2	54	Yes	Yes	Yes	080083774852	P2F72ZQT
XTOR8BRL-347V	81W, Wall Mount, Refractive Lens, 5000K	400W HID	5000K	347V	8635	81	2	54	Yes	Yes	No	080083777068	P2F72ZQT
XTOR12BRL	102W, Wall Mount, Refractive Lens, 5000K	450W HID	5000K	120/277V	13458	102	2	54	Yes	Yes	Yes	080083779581	PAEAG8NM
XTOR12BRL-347V	102W, Wall Mount, Refractive Lens, 5000K	450W HID	5000K	347V	13458	102	2	54	Yes	No	No	80083778201	PAEAG8NM

WP LED Glass Wall Pack

Lumark

High performance and energy-efficient illumination across three housing sizes. Rugged, die-cast aluminum construction, stainless steel hardware, plus sealed and gasketed optical compartment, make the luminaire virtually impenetrable to contaminants. Hinged and removeable aluminum door, impact resistant borosilicate glass. The WP LED is ideal for pathway illumination, building entrances, vehicle ramps, schools, tunnels, stairways and loading docks. It is IP66 rated, UL/cUL wet location listed and replaces up to 450W metal halide equivalent.



WPSLED



WPLLED



WPMLED



Catalog Number	Product Description	Replaces	CCT	Voltage	Lumens	Watts	Case QTY	Pallet QTY	ON	AB	PT	UPC	DLC
WPSLED10	Small Housing, 40W, 4733 Lumens, 120-277V	100W HID	4000K	120V/277V	4733	40	4	48	Yes	No	Yes	080083885664	PTV55HZL
WPMLED10	Medium Housing, 41W, 4700 Lumens, 120-277V	100W HID	4000K	120V/277V	4700	41	4	32	Yes	No	Yes	080083885688	PIV2ITCS
WPMLED15	Medium Housing, 49W, 6203 Lumens, 120-277V	150W HID	4000K	120V/277V	6203	49	4	32	Yes	No	Yes	080083885701	PBJ759X5
WPMLED25	Medium Housing, 80W, 10227 Lumens, 120-277V	250W HID	4000K	120V/277V	10227	80	4	32	Yes	No	Yes	080083885725	PGEOEJ1Q
WPLLED15	Large Housing, 48W, 6,075 Lumens, 120-277V	150W HID	4000K	120V/277V	6075	48	2	32	Yes	No	No	080083885749	PSELO8UB
WPLLED25	Large Housing, 81W, 10,198 Lumens, 120-277V	250W HID	4000K	120V/277V	10198	81	2	32	Yes	No	No	080083885763	PT0PZBCG
WPLLED45	Large Housing, 122W, 15,523 Lumens, 120-277V	450W HID	4000K	120V/277V	15523	122	2	32	Yes	No	No	080083885787	PY0SAW93

RPGC Round Parking Garage & Canopy LED

Lumark

The RPGC Round Parking Garage and Canopy luminaire is an innovative, energy-efficient LED fixture. The RPGC is designed to replace traditional HID fixtures on a one-to-one basis from 150W up to 250W HID. The low profile, rugged construction, features a selectable lumen switch that allows for seamless integration into illuminating parking garages, canopy, stairwells and low-bay retail installations where high security illumination and energy savings are needed.



Catalog Number	Product Description	Replaces	CCT	Voltage	Lumens	Watts	Case QTY	Pallet QTY	ON	AB	PT	UPC	DLC
RPGC25S	31W/49W/63W Selectable, Round Polycarbonate Drop Lens, Quick-Mount Bracket System	150W - 250W HID	4000K	120/277V	3690/6124/7811	31/49/63	1	72	Yes	No	Yes	080083911769	P8ZU6PEI
RPGC25S-347	31W/49W/63W Selectable, Round Polycarbonate Drop Lens, Quick-Mount Bracket System	150W - 250W HID	4000K	347V	3690/6124/7811	31/49/63	1	72	Yes	No	No	080083911783	PDTLEH52



Controls

Greengate

Commercial, Residential & Industrial

Dimmer Switch • Sensor/Control



Dimmer Switch



Sensor/Control



0-10V WBSD Decorator Dimmer

Greengate

The 0-10V WBSD Decorator Dimmer provides a full-range of linear-slide dimming control of 0-10V compatible light sources. These units are ideal for light commercial applications and are compatible with decorator style devices and wallplates. Units feature a preset ON/OFF switch that automatically returns the controlled light(s) to a preset level without disturbing the brightness level. The device is designed for both single-pole (one location) and 3-way (multi location) applications.



Catalog Number	Product Description	Voltage	Case QTY	Pallet QTY	ON	AB	PT	UPC
WBSD-010DEC-C1	0-10V Decorator Dimmer, 120/277VAC	120V/277V	10	1350	Yes	No	Yes	080083735266

0-10V WBSD Slide Dimmer

Greengate

The 0-10V WBSD Slide Dimmer provides a full-range of linear-slide dimming control of 0-10V compatible light sources. These units are ideal for light commercial applications and are compatible with decorator style devices and wallplates. Units feature a preset ON/OFF switch that automatically returns controlled light(s) to preset level without disturbing the brightness level. Neutral is not required for installation of the device.



Catalog Number	Product Description	Voltage	Case QTY	Pallet QTY	ON	AB	PT	UPC
WBSD-010SLD-W	0-10V Slide Dimmer, 120/277VAC	120V/277V	10	1050	Yes	No	Yes	080083735280

0-10V OSW Wallbox Dimmer Sensor

Greengate

The OSW 0-10V dimmer sensor is a 3-in-1 solution that combines the functionality of a switchpack, a sensor and a 0-10V dimmer into one wallbox device, helping customers save labor costs while meeting the latest energy codes and standards. The requirements that can be met incorporating this device include Area Control, Automatic Lighting Shutoff, Manual ON or Partial ON, Multi-level Lighting Control and Occupancy Sensor Control. This product can be used in single-pole (one location) and 3-way (multi-location) applications and is compatible with Cooper Lighting Solution decorator style devices and wallplates.



Catalog Number	Product Description	Voltage	Watts	Case QTY	Pallet QTY	ON	AB	PT	UPC
OSW-P-010-W	PIR, 120/277VAC, 60 Hz, Neutral Required, Coverage up to 1000 ft²	120V/277V	1200/2200	6	1920	Yes	No	Yes	080083758661

Vacancy Passive Infrared MicroSet Ceiling Sensor

Greengate

The MicroSet Passive Infrared Low Voltage Vacancy Ceiling Sensor increases energy savings by requiring a Manual On input to turn ON the lighting. The Passive Infrared (PIR) sensor monitors space occupancy to deliver maximum energy savings. The sensor includes self-adaptive technology that continuously self-adjusts sensitivity and time delay in real-time, maximizing the potential energy savings that are available in the particular application.



Catalog Number	Product Description	Voltage	Case QTY	Pallet QTY	ON	AB	PT	UPC
OAC-P-1500-MV	MicroSet Ceiling Sensor w/Daylight Sensor, Passive Infrared, 360 Degree, 1500 square feet, 120 to 347 VAC, 50/60 Hz	120-347V	10	630	Yes	Yes	Yes	080083579402

0-10V Dual Tech Occupancy Sensor Dimmer

Greengate

The OSW 0-10V Dual Tech Sensor Dimmer is a 3 in 1 solution that combines functionality of a switchpack, a sensor and a 0-10V dimmer into one wallbox device to help customers save labor costs as well as meet the latest energy codes and standards. The requirements that can be met by a solution incorporating this device include Area Control, Automatic Lighting Shutoff, Manual ON or Partial ON (ASHRAE 90.1 only), Multi-level Lighting Control and Occupancy Sensor Control. This product can be used in Single-pole (one location) as well as 3-Way (multi-location) applications and is aesthetically compatible with Cooper Lighting Solutions' decorator style devices and wallplates.



OSW-D-010-W



Catalog Number	Product Description	Voltage	Case QTY	Pallet QTY	ON	AB	PT	UPC
OSW-D-010-W	PIR, 120/277VAC, 60 Hz, Neutral Required, Coverage up to 1000 ft2	120V/277V	10	1200	Yes	No	No	080083816071

NeoSwitch ONW Occupancy Wall Sensor

Greengate

Featuring motion sensing lighting control, the ONW Passive Infrared (PIR) Single Level Occupancy Sensing Wall Switch is also a conventional wall switch. Designed for energy savings and convenience, the switch detects motion from a heat-emitting source (such as a person entering a room) within its field-of-view and automatically switches lights ON. It is available in both neutral and non-neutral wiring options for installation, making it ideal for retrofit applications.



ONW-D-1001-DMV-W



ONW-P-1001-DMV-W



Catalog Number	Product Description	Voltage	Watts	Case QTY	Pallet QTY	ON	AB	PT	UPC
ONW-D-1001-MV-W	NeoSwitch Dual Tech Single Level, No Neutral, 120/277V Wall Switch Sensor, White	120/277V	1200/2200	10	900	Yes	Yes	Yes	080083524709
ONW-P-1001-MV-W	NeoSwitch PIR Single Level 120/277V Wall Switch Sensor, White	120/277V	1200/2200	10	900	Yes	No	Yes	080083523863

OAC MicroSet Dual Tech Ceiling Sensors

Greengate

Offering the most complete sensing equipment available today, the OAC-DT sensors' dual technology combines ultrasonic and Passive Infrared (PIR) technologies, eliminate false activations or deactivations. These sensors are also equipped with MicroSet self-adjusting technology, which provides an adaptive and airflow tolerant technology, making them ideal for spaces which have increased airflow due to higher occupant levels. The MicroSet technology also drastically simplifies and reduces a contractor's installation and adjustment time. The sensors are available in both line-voltage and low-voltage versions and compatible with the SP20 switchpacks.



Catalog Number	Product Description	Voltage	Watts	Case QTY	Pallet QTY	ON	AB	PT	UPC
OAC-DT-1000	MicroSet Ceiling Sensor, Dual Technology (Passive Infrared and Ultrasonic), 32 kHz, 360 Degree, 1000 square feet, 10-30 VDC, Class 2	10-30VDC		10	540	Yes	No	Yes	080083579242
OAC-DT-1000-R	MicroSet Ceiling Sensor w/BAS and Daylight Sensor, Dual Technology (Passive Infrared and Ultrasonic), 32 kHz, 360 Degree, 1000 square feet, 10-30 VDC, Class 2	10-30VDC		10	540	Yes	No	Yes	080083702060
OAC-DT-2000	MicroSet Ceiling Sensor, Dual Technology (Passive Infrared and Ultrasonic), 32 kHz, 360 Degree, 2000 square feet, 10-30 VDC, Class 2	10-30VDC		10	450	Yes	Yes	Yes	080083579266
OAC-DT-2000-MV	MicroSet Ceiling Sensor w/Daylight Sensor, Dual Technology, 360 Degree, 2000 square feet, 120 to 347 VAC, 50/60 Hz	120-347V	1200-2700	10	450	Yes	Yes	Yes	080083579426

120V PIR/Single Level Wall Switch Sensor

Greengate

The OSW-P-1001-MV Passive Infrared Single Level Occupancy Sensing Wall Switch is a motion sensing lighting control and conventional Wall Switch all-in-one that is used to for energy savings and convenience. PIR sensors are considered line-of-sight sensors, meaning that the sensor must be able to have a direct line-of-sight to the person making the motion.



Catalog Number	Product Description	Voltage	Watts	Case QTY	Pallet QTY	ON	AB	PT	UPC
OSW-P-0801-120-W	PIR, 120VAC, 60 Hz Ground Required, Coverage up to 800 ft ²	120V	600W	36	990	Yes	No	Yes	32664729829
OSW-P-1001-MV-W	PIR, 120/277, 60Hz Ground Required, Coverage up to 1000 ft ²	120/277V	2200W	40	1680	Yes	No	Yes	32664729775

Wall/Corner Dual Tech Sensor

Greengate

The Dual Technology sensor's combination of Ultrasonic and Passive Infrared technologies offers the most complete sensing equipment available today. This pairing helps eliminate false activations or deactivations for additional energy savings. The OAWC-DT sensors are also equipped with MicroSet self-adjusting technology which provides an adaptive and airflow tolerant technology, making them ideal for spaces which have increased airflow due to higher occupant levels. Self-adjusting Dual Technology sensors drastically simplify and reduce a contractor's installation and adjustment time period. Manual On feature for use with 1 or 2 momentary switches controlling 1 or more Switchpacks.



Catalog Number	Product Description	Voltage	Case QTY	Pallet QTY	ON	AB	PT	UPC
OAWC-DT-120W	Dual Tech Wall/Corner Sensor, wide angle 120 Degree	0-30VDC	10	540	Yes	No	Yes	080083579563

Heavy Duty Switch Pack

Greengate

The Heavy Duty Switchpack provides 15 VDC operating voltage to all low-voltage, 15 VDC, occupancy sensors and daylighting controllers. A single switchpack can provide power for up to five sensors. Up to 10 switchpacks can be connected to one sensor for control of multiple circuits. Isolated contacts may also be used to control HVAC, contractors and motors, etc.



Catalog Number	Product Description	Voltage	Watts	Case QTY	Pallet QTY	ON	AB	PT	UPC
SP15-347	Switchpack; 347V, 15A	347V		30	1350	Yes	No	Yes	080083503230
SP20-MV	Switchpack, 120/277, 20A	120/277V	2400W-5400W	30	1800	Yes	Yes	Yes	080083503223

High Bay Fixture Mount Sensors

Greengate

The OEF-P PIR Fixture Mount High Bay/Low Bay Dimming Occupancy Sensor with Integrated Photocell and Two Interchangeable Lenses provides 1-10V control. The OEF-P is easy to program and set for desired 1-100 percent continuous dimming levels during daylighting.



Catalog Number	Product Description	Voltage	Watts	Case QTY	Pallet QTY	ON	AB	PT	UPC
OEF-P-010V-MV	Fixture Mount PIR High Bay/Low Bay Dimming Occupancy Sensor With Integrated Photocell	120V/277V	1200W	10	1200	Yes	No	Yes	080083758104



HAZARDOUS MATERIALS
KEEP OUT
AUTHORIZED PERSONNEL ONLY

PERKASAAN
KADU
KEMERKATAN
KEMERKATAN

PERKASAAN
KADU
KEMERKATAN
KEMERKATAN

Rapid Response Program



Troffers



High Bay



Strip

**Metalux
Commercial
Industrial**

Fill your small projects on time and on budget

The Rapid Response program is designed to offer the most popular Metalux commercial and industrial lighting products with options delivered to you when you need them.

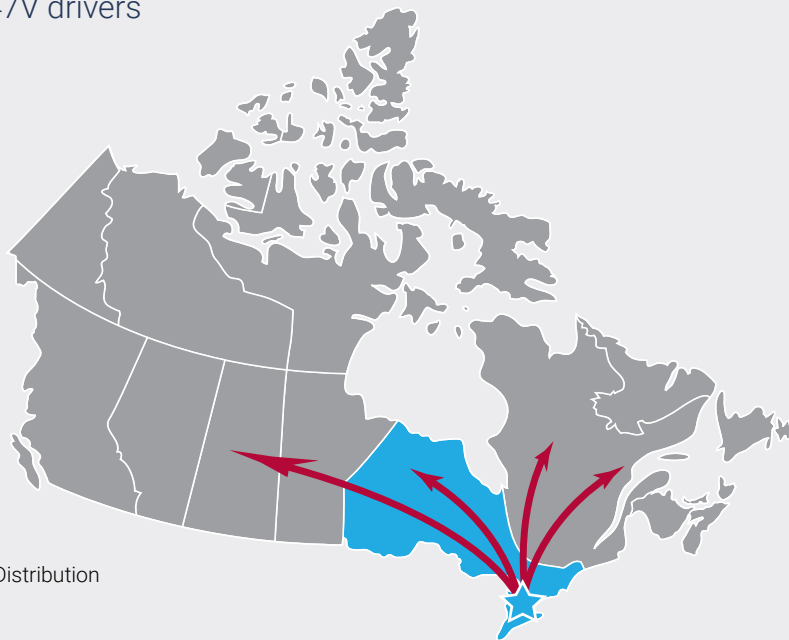


Rapid Response

>> Visit Eaton.com/MarketPro

Check out the site and find:

- ✓ Customizable Metalux commercial and industrial products
- ✓ Troffers, high bays and strips
- ✓ **Options include:** sensors, battery packs, flex, modular wiring, 347V drivers



Mississauga Distribution
Center

*MarketPro freight terms do not apply to the Rapid Response program.
See terms, conditions and quantity limits at Eaton.com/MarketPro

The Rapid Response Program by Cooper Lighting Solutions was designed to keep key ambient, industrial and commercial lighting products flowing to your customers. With Rapid Response, completing projects has never been easier. Rapid Response provides flexibility through customizable options that makes ordering the most popular products simple. Combining easy-to-order modifications and quick-turnaround, Rapid Response allows you to deliver products faster, so projects are completed sooner.

Rules and Guidelines:

- Standard Cooper Lighting Solutions Terms and Conditions for MTO items apply.
- Pre-approval required for custom build requests and orders exceeding 60 units
- 10-business day lead time will apply for all Rapid Response orders
- 10-business day window starts from initial acceptance of the order by Cooper in our FLASH order system
- If necessary, longer lead times will be appropriately communicated
- All orders are to be submitted with "QSC-" prefix
- HFR (Hold for Release) orders are not permissible.
- Order scheduling to commence only upon receipt of order in our FLASH order system

Rapid Response



Contact Patrick Millar for more information

Supply Chain Specialist

tel: +1 905 501 3001 |

mobile: +1 647 278-2528

patrickpmillar@eaton.com

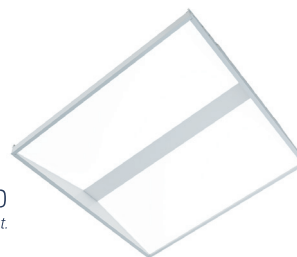


Encounter LED Series

Metalux

- Leverages our patented WaveStream™ Technology with AccuAim™ optics
- Advanced optical control with optimal illumination
- High performance efficacy up to 143 lumens per watt
- Over 60% energy savings when compared to fluorescent troffers
- Standard 0-10V continuous dimming driver
- L92 at 100,000 hours with 5-year warranty

WaveStream™ LED
Taking Control of Light.



SAMPLE NUMBER: QSC-22EN-LD2-34-UNV-EL7W-L835-CD1-U

RR Code	Rating	Series ⁽¹⁾	Air	Lamp Type	LED Lumens Output		Optics
QSC =Quick Ship Canada	[Blank] =Standard	22EN =2' x 2' Encounter Series	[Blank] =Standard	LD2 =LED 2.0	Stock 34=3400 Lumens ^{(2), (3)}	MTQ 19=1900 Lumens ^{(2), (3), (4)} 25=2500 Lumens ^{(2), (3), (4)} 30=3000 Lumens ^{(2), (3)} 39=3900 Lumens 43=4300 Lumens	[Blank] =Standard
Voltage ⁽⁵⁾	CCT	Options		Driver Type		Number of Drivers	Packaging
UNV =Universal Voltage 120-277 347V =347 Volt ⁽⁶⁾	L835 =3500K L840 =4000K	Emergency EL7W =7-watt, 120V-277V emergency battery pack installed ⁽⁷⁾ Flex A3/8-4/18G DIM =3/8" cable, 2-wire, ground, dimming leads		CD =0-10V Dimming Driver (Standard) 5LTD =Fifth Light DALI Driver (10%-100% Dimming) ^{(2), (A)} 5LTHD =Fifth Light Dimming Driver (1%-100% Dimming) ^(A)		1 =1 Driver	U =Unit Pack

NOTES: (1) DesignLights Consortium® Qualified and classified for both DLC Standard and DLC Premium, refer to www.designlights.org for details. (2) 1900, 2500, 3000 and 3400 lumen option are not available with a Fifth Light DALI (5LTD) driver. (3) Step-dim driver not available with 1900, 2500, 3000 and 3400 lumen option. (4) Not compatible with WN driver. (5) Products also available in non-US voltages and frequencies for international markets. (6) 347V emergency option not available. (7) With integral test switch/indicator/laser test. For approximate delivered lumens multiply the lumens per watt of the desired fixture by the wattage of the emergency battery pack (100 lm/W x 7=700 lumens). IES-format photometry for luminaire under emergency operation available. (A) Consult Fifth Light system pages for additional details and compatibility.

SAMPLE NUMBER: QSC-24EN-LD2-54-UNV-EL14W-L835-CD2-U

RR Code	Rating	Series ⁽¹⁾	Air	LED Lumens Output		Optics	Voltage ⁽⁵⁾
QSC =Quick Ship Canada	[Blank] =Standard	24EN =2' x 4' Encounter Series	[Blank] =Standard	Stock 45=4500 Lumens 54=5400 Lumens 67=6700 Lumens	MTQ 30=3000 Lumens ^{(2), (3)} 34=3400 Lumens ^{(2), (3)} 40=4000 Lumens 49=4900 Lumens 58=5800 Lumens 70=7000 Lumens ⁽²⁾ 74=7400 Lumens ⁽²⁾	[Blank] =Standard	UNV =Universal Voltage 120-277 347V =347 Volt ⁽⁴⁾
CCT	Options		Driver Type		Number of Drivers	Packaging	
L835 =3500K L840 =4000K	Emergency EL7W =7-watt, 120V-277V emergency battery pack installed ⁽⁶⁾ EL14W =14-watt 120V-277V emergency battery pack installed ⁽⁶⁾ Flex A3/8-4/18G DIM =3/8" cable, 2-wire, ground, dimming leads		CD =0-10V Dimming Driver (Standard) 5LTD =Fifth Light DALI Driver (10%-100% Dimming) ^{(8), (A)} 5LTHD =Fifth Light Dimming Driver (1%-100% Dimming) ^{(7), (A)}		1 =1 Driver 2 =2 Drivers	U =Unit Pack	

NOTES: (1) DesignLights Consortium® Qualified and classified for both DLC Standard and DLC Premium, refer to www.designlights.org for details. (2) Step-dim driver not available with 3000, 3400, 7000 and 7400 lumen options. (3) 5LTD DALI option not available with 3000 and 3400 lumen packages. (4) 347V emergency option not available. (5) Products also available in non-US voltages and frequencies for international markets. (6) With integral test switch/indicator/laser test. For approximate delivered lumens multiply the lumens per watt of the desired fixture by the wattage of the emergency battery pack (100 lm/W x 7=700 lumens). IES-format photometry for luminaire under emergency operation available. (7) Two drivers required for 5LTHD option for 6700 lumens and up. (8) 5LTD DALI option not available with 3000 and 3400 lumen packages. (A) Consult Fifth Light system pages for additional details and compatibility.

Cruze ST Recessed LED Luminaire

Metalux

- Advanced optical control married with contemporary styling
- High performance efficacy greater than 135 lumens per watt
- Standard 0-10V continuous dimming driver
- Shallow depth housing (3.25")
- Latchless design and matte white architectural paint for clean look
- cULus damp location / IC Rated / RoHS compliant / DLC Qualified



SAMPLE NUMBER: QSC-22CZ2-34HE-UNV-EL7W-L835-CD1-U

RR Code	Rating	Series	LED Lumens Output		Shielding
QSC=Quick Ship Canada	[Blank]=Standard	22CZ2=2' x 2' Cruze 24CZ2=2' x 4' Cruze	2' x 2' Standard Efficacy 20=2000 Lumens ^{(1), (2)} 24=2400 Lumens ^{(1), (2)} 32=3200 Lumens ⁽¹⁾ 39=3900 Lumens ⁽¹⁾ 44=4400 Lumens ⁽¹⁾	2' x 4' Standard Efficacy 30=3000 Lumens 35=3500 Lumens 40=4000 Lumens 45=4500 Lumens 50=5000 Lumens 55=5500 Lumens ⁽¹⁾ 60=6000 Lumens ⁽¹⁾ 65=6500 Lumens ⁽¹⁾	[Blank]=Ribbed Frosted Acrylic Lens (Standard) S=Smooth Frosted Acrylic Lens RDP=Smooth Lens with Round Pattern Insert

Voltage ⁴	CRI/CCT	Driver Type	Number of Drivers	Packaging
UNV=Universal Voltage 120-277 347V=347 Volt ⁽⁵⁾	L835=3500K L840=4000K L850=5000K	CD=0-10V Dimming Driver (10% - 100% Dimming) 5LTD=Fifth Light DALI Driver (5%-100% Dimming) ⁽³⁾ 5LTHD=Fifth Light Dimming Driver (1%-100% Dimming) ⁽³⁾	1=1 Driver 2=2 Drivers ⁽³⁾ (2' x 4' only)	U=Unit Pack

Options		
Emergency [Blank]=No Emergency EL7W=7-watt, 120V-277V emergency battery pack installed ⁽⁶⁾ EL14W=14-watt 120V-277V emergency battery pack installed ⁽⁶⁾	Flex [Blank]=No Flex A3/8-5/18G DIM=3/8" cable, 3-wire, ground, dimming leads	Sensors [Blank]=No Flex SWPD1=Wavelinx Wireless Integrated Sensor ^(A) SVPD1=0-10V Stand-alone Integrated Sensor ^(B)

NOTES: (1) White tuning not available with this model. (2) Not compatible with WN driver. (3) Two drivers are required for the following packages: 65 347V CD, 75HE 347V CD. When combined with emergency total height is increased by 1 inch. (4) Products also available in non-US voltages and frequencies for international markets. (5) 347 versions 6000 lumens and below are available with emergency options, 5LTHD and step-dim options or sensors are not available. (6) With integral test switch/indicator/laser test. For approximate delivered lumens multiply the lumens per watt of the desired fixture by the wattage of the emergency battery pack (100 lm/W x 7=700 lumens). IES-format photometry for luminaire under emergency operation available. Battery option increases total height by 1 inch. (A) Consult Wavelinx system pages for additional details and compatibility. (B) Consult SVPD series system pages for additional details and compatibility. (C) Consult Fifth Light system pages for additional details and compatibility.

OHB LED High Bay

Metalux

- Precision designed optical performance
- Offered in both standard and high efficacy versions
- High performance efficacy up to 210 lumens per watt
- Efficient 1-for-1 replacement of linear fluorescent & HID fixtures
- Lumen packages - 18K, 24K, 30K
- Narrow, medium, and wide distribution



SAMPLE NUMBER: QSC-OHB-24SE-MFL-UNV-L840-CD-U Includes V Hangers for rapid installation

RR Code	Series ⁽¹⁾	Lumen Packages / Standard Efficacy	Distribution / Shielding	Voltage ^{(3), (4), (5)}
QSC=Quick Ship Canada	OHB=Optimized High Bay	18SE=18,000 Lumens 24SE=24,000 Lumens 30SE=30,000 Lumens	N=Narrow MFL=Medium Frosted MCL=Medium Clear W=Wide NL=No Lens ⁽²⁾	UNV=Universal Voltage 120-277V UNC=Universal Voltage 347/480

CCT/CRI	Driver Type	Options	Packaging
L840=80CRI / 4000K L850=80CRI / 5000K	CD=0-10V Dimming Driver 5LTD=Fifth Light DALI ⁽⁶⁾	MP=Modular Plug ⁽⁸⁾ Motion Sensors MS=360° or 180° Motion Sensor Installed, (specify voltage) ⁽⁷⁾ SVPD3=Integrated occupancy and daylight dimming sensor, 1200 sq. ft. coverage ZW-SVPD3=Integrated Wavelinx Wireless Sensor, 1200 sq. ft. coverage	U=Unit Pack

NOTES: (1) DesignLights Consortium® Qualified and classified for both DLC Standard and DLC Premium, refer to www.designlights.org for details. (2) (NL) Non lens version not available with 36SE, 48SE, and 60SE lumen packages. (3) Voltage must be specified when ordered with plugs or emergency drivers. (4) When ordering sensor or EBP/TD option, specify as UNV (for 120V or 277V), 347V or 480V. (5) Ambient temperatures limited to 40C when using emergency, sensors, or 5LTD in conjunction with 347V or 480V. (6) Sensor or UNC not available in conjunction with 5LTD driver. (7) When ordering sensor or EBP/TD option, specify as UNV (for 120V or 277V), 347V or 480V. (8) Requires use of MC or MPC cord accessories, specify voltage for plugs (MP).

HBLED High Bay Series

Metalux

- LEDs available in 4000K and 5000K CRI ≥ 80
- 0-10V dimming driver
- Multiple lumen packages
- Optional door frames and lens options
- Available with modular power supply
- Wide distribution



Includes V Hangers for rapid installation

SAMPLE NUMBER: QSC-HBLED-LD5-18SE-W-UNV-L850-CD2-U

RR Code	Series ⁽¹⁾	Lamp Type	LED Lumen Output	Distribution	Shielding	Voltage ⁽⁸⁾
QSC =Quick Ship Canada	HBLED =LED High Bay Linear	LD5 =LED 5.0	12SE =12,000 Lumens 15SE =15,000 Lumens 18SE =18,000 Lumens 24SE =24,000 Lumens 30SE =30,000 Lumens 36SE =36,000 Lumens 48SE =48,000 Lumens ⁽²⁾ 60SE =60,000 Lumens	N =Narrow (Aisle) W =Wide (General)	[Blank] =None A =Prismatic Acrylic Lens & Door frame ^{(3), (4), (5), (6)} CL =Clear Acrylic Lens & Door frame ^{(3), (5), (6)} WG =Wraparound Wireguard A/WG =Acrylic Lens, Wireguard and Door Frame ^{(3), (4), (5), (6)} CL/WG =Clear Lens, Wireguard and Door Frame ^{(3), (5), (6)}	UNV =Universal 120-277 Voltage UNC =Universal 347/480 Voltage ⁽⁷⁾
CRI/CCT	Driver Type	Number of Drivers	Options	Packaging		
80 CRI L835 =3500K L840 =4000K L850 =5000K	CD =0-10V Dimming Driver ^{(3), (9)} ED =Electronic Fixed Output driver ⁽⁹⁾ 5LTD =Fifth Light DALI ^{(3), (9), (10)}	1 =1 Drivers (12,000 & 15,000 lumen versions) 2 =2 Drivers (18,000, 24,000 & 30,000 lumen versions) 3 =3 Drivers (36,000 & 8,000 lumen CD options) ⁽²⁾ 4 =4 Drivers (48,000 and 60,000 lumen versions) ⁽²⁾	MP =Modular Power Receptacle (Used for All Cord or Cord and Plug Options) ⁽¹¹⁾ MS =360° or 180° Motion Sensor Installed (specify voltage) ⁽¹²⁾ OEPD10VMV =Occupancy Sensor with Integrated Photocell SVPD3 =Integrated occupancy and daylight dimming sensor, 1200 sq. ft. coverage ^{(6), (12), (13), (14)} ZW-SWPD3 =Integrated Wavelinx Wireless Sensor, 1200 sq. ft. coverage	U =Unit Pack		

NOTES: (1) DesignLights Consortium® Qualified and classified for both DLC Standard and DLC Premium, refer to www.designlights.org for details. (2) For 48,000 lumen package, CD option requires three drivers, ED option requires four. (3) Refer to ambient ratings chart for temperature requirements. (4) Not available with narrow distribution. (5) Not available with 48SE or 60SE configurations. (6) Integrated sensor not compatible with door frame. (7) Not available with dual switching. (8) Voltage must be specified when ordered with plugs or emergency driver. (9) Lumen output will vary depending on dimming or fixed output drivers. Refer to IES files for delivered lumens. (10) 5LTD available with 12, 18, 24, 36 lumen packages only. (11) Requires use of MC or MPC cord accessories, specify voltage for plugs (MP). (12) When ordering sensors, specify as UNV (for 120 or 277V), 347 or 480V. (13) Integrated sensor limited to 36,000 lumens. (14) Integral sensor works only with "CD" driver and is factory prewired to the driver for stand-alone control.

VHB LED High Bay Series

Metalux

- Compact, lightweight design for ease of installation
- High Impact Polycarbonate optical lens
- 4 lumen packages available (12,000, 15,000, 18,000 and 24,000)
- High-Performance efficacy up to 133 lm/W
- Occupancy and daylight sensor for added savings
- Lumen Maintenance – L82 @ 60,000 hours



SAMPLE NUMBER: QSC-VHBLED-LD1-12-W-UNV-L840-CD1-U

RR Code	Series ¹	LED Lumen Output	Distribution	Shielding	Voltage ⁽³⁾	CCT
QSC =Quick Ship Canada	VHB =LED High Bay	9 =9,000 Lumens 12 =12,000 Lumens 15 =15,000 Lumens 18 =18,000 Lumens 24 =24,000 Lumens ⁽²⁾	N =Narrow (Aisle) W =Wide (General)	[Blank] =High Impact Polycarbonate Lens	UNV =Universal Voltage 120-277 UNC =Universal Voltage 347/480 ⁽²⁾	L840 =4000K L850 =5000K
Driver Type	Options	Motion Series	Packaging			
CD =0-10V Dimming Driver 5LTD =Fifth Light DALI (not available in 24,000 lumens)	MP =Modular Power Receptacle (used for all Cord or Cord and Plug options) ⁽⁴⁾	MS =360° or 180° Motion Sensor Installed, (specify voltage) ^{(2), (5)} SVPD3 =Integrated occupancy and daylight dimming sensor, 1200 sq. ft. coverage ^{(2), (5), (6)} ZW-SWPD3 =Integrated Wavelinx Wireless Sensor, 1200 sq. ft. coverage	U =Unit Pack			

NOTES: (1) DesignLights Consortium® Qualified and classified for both DLC Standard and DLC Premium, refer to www.designlights.org for details. (2) Y-toggle mounting is required when installing the VHB 24K, lumen combined with UNC, 347V, 480V, and a motion sensor. (3) Voltage must be specified when ordering accessory cord and plug. (4) Requires use of MC or MPC cord accessories. (5) When ordering MS, SVPD3, or LWR option, specify as UNV (for 120 or 277V), or 347V, or 480V. (6) SVPD3 sensor rated for -25°C to 55°C ambient.

SNLED Series Base

Metalux

- 8', 4' and configurations
- High efficiencies to 153 lumens per watt
- Typical 80+ CRI
- Class 2 with standard 0-10V dimming, 1% optional
- UL listed up to 40°C ambient temperatures



SAMPLE NUMBER: QSC-4 SNLED-LD5-48SL-UNV-L840-U

RR Code	Length	Series	Lumen Package			Voltage
QSC=Quick Ship Canada	4=4' Length 8T=8' Length	SNLED=Commercial LED Striplight ⁽¹⁾	Stocked	MTD		UNV=Universal Voltage 120-277 347V=347 Voltage
			24SL (4' only)	20SL (4' only)	64SL	
		Lamp Type	28SL (4' only)	36SL	68SL	
			32SL	40SL	72SL	
			48SL	44SL	96SL	
		LD5=LED 5.0	80SL	52SL	104SL	
			88SL	56SL	112SL ⁽²⁾	
				60SL		

Options

Emergency

EL7W=7-watt, 120V-277V emergency battery pack installed ⁽³⁾
EL14W=14-watt 120V-277V emergency battery pack installed ⁽³⁾

CCT/CRI

L835=3500K, 80 CRI
L840=4000K, 80 CRI
L850=5000K, 80 CRI

Driver Type	Number of Drivers	Packaging
CD=0-10V Dimming Driver (10% - 100% Dimming) HCD=0-10V Dimming Driver (1% - 100% Dimming) SLTD=Fifth Light (DALI) Driver ⁽⁴⁾	1=1 Driver 2=2 Drivers	U=Unit Pack

NOTES: (1) DesignLights Consortium® Qualified and classified for both DLC Standard and DLC Premium, refer to www.designlights.org for details. (2) DALI and Step-dim versions require two drivers. (3) With integral test switch/indicator/laser test. For approximate delivered lumens multiply the lumens per watt of the desired fixture by the wattage of the emergency battery pack (100 lm/W x 7=700 lumens). IES-format photometry for luminaire under emergency operation available. (4) For a complete listing of Fifth Light products, visit www.eaton.com/lightingsystems.

SNLED Series Lensed Strip

Metalux

- 8' and 4' Lensed configurations
- Square and Round Lens
- High efficiencies to 153 lumens per watt
- Typical 80+ CRI
- Standard 0-10V dimming
- UL listed up to 40°C ambient temperatures



SAMPLE NUMBER: QSC-8T SNLED-LD5-90SL-LC-UNV-L840-U

RR Code	Length	Series	Lens	Voltage
QSC=Quick Ship Canada	4=4' Length 8T=8' Length	SNLED=Commercial LED Strip ⁽¹⁾	Round	UNV=Universal Voltage 120-277 347V=347 Voltage ^{(2), (3), (4)}
			LC=Clear Lens	
		Lamp Type	LN=Semi-Frost Lens - Narrow LW=Full Frost Lens - Wide	
		LD5=LED 5.0		

Lumen Packages

4 ft. Round Lens

LC (Clear)=18SL, 22SL, 26SL, 30SL, 34SL, 37SL, 41SL, 46SL, 49SL, 52SL, 56SL, 63SL, 66SL, 62HL, 55HL, 60HL, 76HL
LN (Semi-frost narrow)=18SL, 22SL, 26SL, 30SL, 34SL, 37SL, 41SL, 46SL, 53SL, 56SL, 61SL, 64SL, 50HL, 54HL, 60HL, 74HL
LW (Full frost wide)= 16SL, 20SL, 23SL, 27SL, 30SL, 33SL, 37SL, 41SL, 44SL, 47SL, 50SL, 56SL, 58SL, 44HL, 48HL, 54HL, 65HL

8 ft. Round Lens

LC (Clear)=60SL, 68SL, 75SL, 83SL, 90SL, 98SL, 105SL ⁽⁵⁾, 130HL ⁽⁵⁾, 170HL ⁽⁵⁾
LN (Semi-frost narrow)=60SL, 68SL, 75SL, 83SL, 91SL, 98SL, 106SL, 130HL ⁽⁵⁾, 170HL ⁽⁵⁾
LW (Full frost wide)= 54SL, 61SL, 67SL, 74SL, 81SL, 88SL, 95SL, 110HL, 150HL

Notes

SL denotes standard lumen output. HL denotes high lumen output. Additional LEDs to obtain lumen package.
For comparable lumen packages, HL efficacy is greater than SL efficacy.
26SL: 2600 delivered lumens, standard lumen output
170HL: 17000 delivered lumens, high output.

Options	Driver Type	Number of Drivers	Packaging
Emergency EL7W=7-watt, 120V-277V emergency battery pack installed ⁽⁶⁾ EL14W=14-watt 120V-277V emergency battery pack installed ⁽⁶⁾	CCT/CRI L835=3500K, 80 CRI L840=4000K, 80 CRI L850=5000K, 80 CRI CD=0-10V Dimming Driver (10% - 100% Dimming) SLTD=Fifth Light (DALI) Driver ⁽⁷⁾	1=1 Driver 2=2 Drivers	U=Unit Pack

NOTES: (1) DesignLights Consortium® Qualified and classified for both DLC Standard and DLC Premium, refer to www.designlights.org for details. (2) 347V CD driver is limited to 50W max output before requiring 2 drivers (no 85W 347V solution). (3) 347 SD Driver require qty 2 transformers for Dual switch legs can not offer with EBP due to space requirements for 3ed transformer for EBP charge circuit. (4) All other drivers at 347V requires single transformer for Driver. If EBP is included, would require second transformer THD an PF affected by transformer (no DLC). (5) DALI and Step-dim versions require two drivers. (6) With integral test switch/indicator/laser test. For approximate delivered lumens multiply the lumens per watt of the desired fixture by the wattage of the emergency battery pack (100 lm/W x 7=700 lumens). IES-format photometry for luminaire under emergency operation available. (7) For a complete listing of Fifth Light products, visit www.eaton.com/lightingsystems.



HALOHOME™

WHOLE HOME SMART LIGHTING SYSTEM

Install. Connect. Control.

Grow your business with affordable smart lighting, controls and accessories.

For details see page 24.

»» BringHaloHome.com



HALO MINUTE Video-Podcast Series

Join our resident **HALO** experts in the newly launched **HALO MINUTE** series to learn about new products, install tips, sales tools and more.

»» Visit HaloLighting.com
to watch the latest episode

HALO Commercial



ENERGY EFFICIENCY + **VALUE**

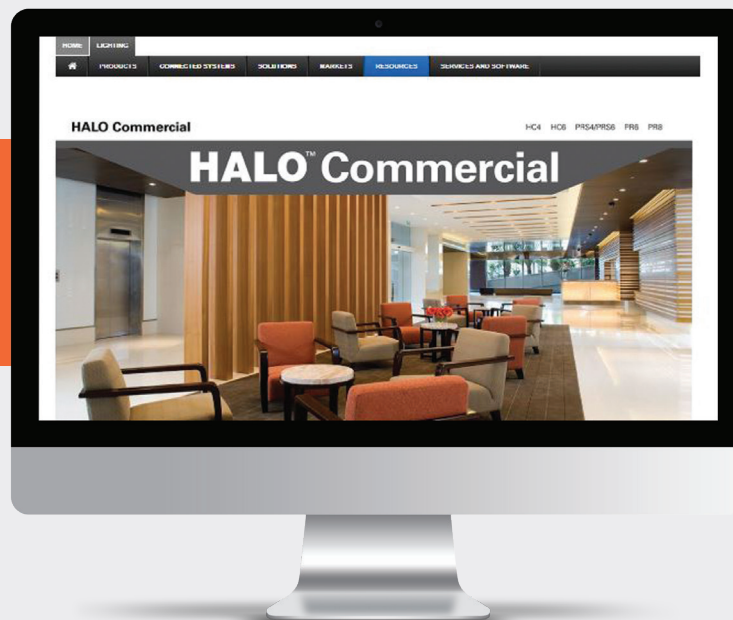
HALO Commercial achieves the perfect balance of optical control and efficiency designed to deliver lower watts per square foot, meet commercial lighting energy code requirements and provide uniform beam distribution.

Design/build, tenant improvement, hospitality and institutional projects will appreciate the HALO Commercial balance of performance and budget-minded design.

» Visit Eaton.com/MarketPro to learn more about HALO Commercial solutions

Check out the site and find:

- ✓ Featured products and solutions
- ✓ Spec sheets, training guides, brochures and more





Distributor Stock Program Canada

Q2 | 2020

Lighting Product Lines

Ametrix
Corelite
Ephesus
Fail-Safe
Halo
Halo Commercial
Invue
io
Iris
Lumark
Lumière
McGraw-Edison
Metalux
MWS
Neo-Ray
Portfolio
RSA
Shaper
Streetworks

Controls Product Lines

Fifth Light Technology
Greengate
iLight (International Only)
iLumin
Zero 88

Connected Lighting Systems

Distributed Low-Voltage Power
HALO Home
iLumin Plus
LumaWatt Pro
WaveLinx
Trellix

Cooper Lighting Solutions
1121 Highway 74 South
Peachtree City, GA 30269
P: 770-486-4800
www.eaton.com/lighting

Canada Sales
5925 McLaughlin Road
Mississauga, Ontario L5R 1B8
P: 905-501-3000
F: 905-501-3172

© 2019 Cooper Lighting Solutions
All Rights Reserved
Printed in USA
Publication No. CA525051EN
November 2019

Cooper Lighting Solutions is a registered trademark.

All other trademarks are property of their respective owners.

Product availability, specifications, and compliances are subject to change without notice.