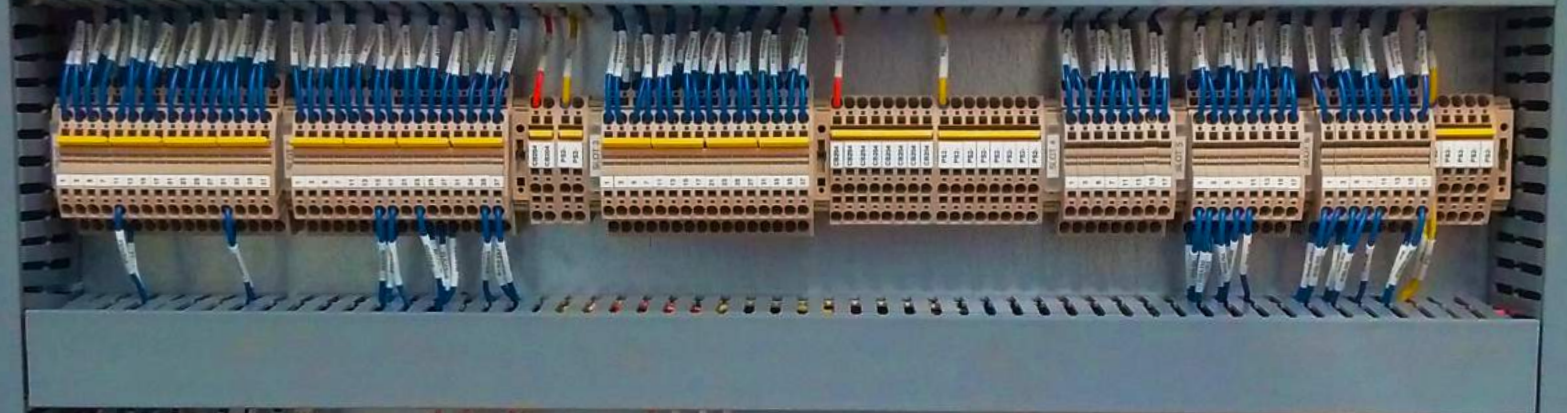




E.B. Horsman & Son
The Electrical Distributor of Choice!



AUTOMATION & CONTROLS PORTFOLIO





Comprehensive & Integrated **Enclosure** & **Panel** Solutions from **Components to Wire & Labels.**

As industry 4.0 continues to transform the manufacturing world as we know it, control panels, power distribution, and motor controls are evolving and becoming more integrated. Manufacturers are facing challenges to meet these new requirements in the digitalization era. Searching for components from multiple manufacturers that integrate together can be challenging. That is where our team can add value to your business. With our comprehensive portfolio of over 600 supplier partners and over 20,000 products in stock, we can support your control component needs.



Use your smart phone camera to scan & view online



+600 
SUPPLIER
PARTNERS

+20,000 
PRODUCTS IN
STOCK

+20 
LOCATIONS ACROSS
WESTERN CANADA



Solving your Panel & Control Challenges



Product Selection

The right product for the right application at the right cost. We will help identify and present the most suitable components based on your unique requirements and availability.



Design & Layout

Designing and laying out panels can be time consuming and a resource drain. Our team can assist with these tasks helping with your efficiency and resource allocation.



Manufacturing Efficiency

Creating a manufacturing package for a panel shop and modifying the enclosures can be error-prone and labour intensive.

We have services and partners to support efficient manufacturing by creating bundles, kits, and packages as well as, modified enclosures with advanced CAD solutions.



Resources & Training

The industry is continuously evolving with new technologies and products being released on a regular basis. This poses challenges to keep up with the latest equipment & systems. Our team has a strong partnership with the manufacturers and can support you with training and product updates.



WE'RE OPEN 24/7
Shop Online at ebhorsman.com



NEWS

E.B.HORSMANPAC

Process, Automation, Controls & Motion Division

About Us

Overcome difficult industrial automation, control, and motion challenges with the help of our specialized team. Our technical expertise, strong supplier partnerships and extensive branch network for logistics, inventory and application support can help take you all the way from specifications and design support to delivery. We have one of the largest teams for automation, controls, & motion amongst full line electrical wholesalers in Western Canada.

- *Specifications and Design Support*
- *Product Selection Recommendations*
- *Proposals & Quotations*
- *Inventory Support & Supply Management*

When dealing with industrial controls, our specialists can present a complete package or industrial components with the diverse product lines we carry: motor controls (breakers, motor starters, overloads, contractors, and soft starters), power distribution products, power supplies, and enclosures are just a few. We also help administer technical assistance on all our products during installation and implementation to ensure our customers are left feeling satisfied.

- *Delivery & Logistics*
- *Individual or Group Training*
- *Post-Sale Technical Support*

- 5 Rittal Enclosures
- 9 Enclosure, Indication & Signal Lighting
- 12 Fuse Holders & Fuses
- 14 Terminal Blocks & Barriers
- 16 Ethernet Switches & Cabling Technology
- 18 Line Reactors & Relays
- 20 Panel Interfaces
- 22 Programmable Logic Controller, HMI & Motion

- 6 Enclosure Accessories
- 11 Pilot Lights, Push Buttons, & Switches
- 13 Power Switching & Monitoring
- 15 Power Supplies
- 17 Circuit Breakers & Transformers
- 19 Motor Starters
- 21 Remote I/O & Remote Connectivity
- 23 Modern Control Panel (MCP)



ENCLOSURES

RITTAL ENCLOSURE OVERVIEW

Rittal's off-the-shelf standard, modified standard and custom-engineered products are known throughout the world as high quality, affordable solutions for practically any industrial or IT infrastructure application - from single enclosures to comprehensive systems.



TS8 FREESTANDING ENCLOSURES

- Exterior surfaces (doors or side walls) are easily removable to access interior components
- Available in 304 & 316L stainless steel
- Door can hold up to 200 pounds and can quickly be removed
- Available in five design configurations including non-disconnect, disconnect, NEMA 3R, NEMA 4, and floormount



DID YOU KNOW

Use Rittal Configuration Systems to:

- select your enclosure, add your accessories, generate a drawing, a csv file and a Bill of Material directly from Rittal's online configuration tool
- use their energy efficiency calculator to determine your cooling unit requirements

Visit Rittal.com to learn more.



WE'RE OPEN 24/7
Shop Online at ebhorsman.com



NEWS



ENCLOSURE ACCESSORIES

TOPTHERM ENCLOSURE FILTER FAN

- Fan-and-Filter Units dissipate head loads in a cost-effective manner
- Optimum airflow distribution inside the enclosure facilitating hot spot elimination
- Fast & toolless assembly – clip-on mounting
- Air throughput from 20 m/h to 700 m/h
- IP 54 as standard
- Minimal installation depth



BLUE e+ AC UNITS

- Protect the temperature-sensitive components of enclosures
- Constant temperature inside enclosure
- Install into the side, rear, or door of the enclosure
- Built-in technology for demand-based cooling
- Remote monitoring via Ethernet
- Ideal for environments ranging from -20°C to +60°C
- UL Type 12 and 3R





BUSBAR SYSTEMS: RILINE COMPACT

- A completely covered busbar system
- Rated current up to 125 A
- Easy combination of different switching devices
- Tool-free assembly through plug-in and spring clamp system



BUSBAR SYSTEMS: PLS BUSBAR SYSTEM

- Rated current up to 800 A or 1600 A
- 60 mm bar centre distance
- Ensures maximum shock-proofing
- Flexible positioning of supports for easier planning
- Suitable for top-mounting



MAXI-PLS BUSBAR SYSTEM

- Rated current up to 2500 A or 4000 A
- Square profile cross-section busbar
- Designed to fit TS8 freestanding enclosures



ENCLOSURE FOLDING TRAY FOR SERVICING

- Fold-out for keyboard, mouse, and documents
- For installation in 600 and 800 mm wide doors or 482.6 mm (19") swing frames and enclosures



WE'RE OPEN 24/7
Shop Online at ebhorsman.com



NEWS

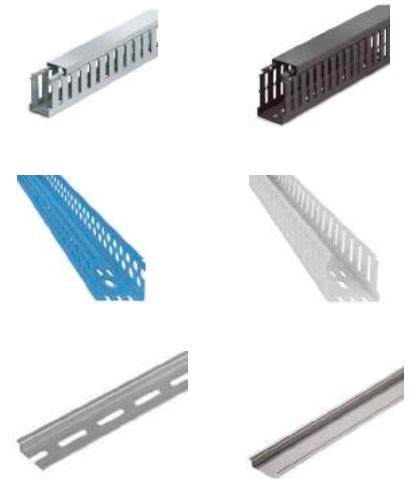
WIRING DUCT & DIN RAILS

- Solid, wide slot, narrow slot and round hole versions
- Widths 0.75" to 6" and depths 1" to 5"
- Optional adhesive back for quick, hassle-free installation
- Complete selection of accessories and tools for installation
- Provided with mounting holes
- Lead-free construction

Weidmüller 

ABB

PANDUIT[™]



CABLE, LUGS, & GROUNDING

- Solve problems with wire bending and termination: ferrules, fork terminals, pin terminals, ring terminals, and terminal kits
- Insulated cable lugs
- Mechanical & compression lugs
- Grounding & bonding systems
- Splice kits

Weidmüller 

ABB

PANDUIT[™]



WEIDMÜLLER THERMAL TRANSFER PRINTER

- Thermal transfer printer for fabric and polyester labels, shrink sleeves, and PLC labels
- Interfaces with Weidmüller's software M-Print PRO and intuitive touch display
- Ideal for small and medium print volumes
- Excellent readability (resolution: 300 dpi)

Weidmüller 



BRADY LABELLING & WIRE MARKING

- Printers designed for the electrical industry
- Industrial label printers
- Portable or mobile solution
- Bench top printers
- Sign & label printers
- Models available for different print volumes

 **BRADY**





ENCLOSURE LIGHTING

WLB32 SERIES

- Banner's WLB32 is a bright LED fixture that features an even light output to eliminate glare
- Energy efficient for overall cost savings
- High/Low/Off switch allows users to customize light levels
- Available as cascadable models for a continuous length of lighting, with a minimum of wiring
- Easy installation with snap clips, or a choice of magnetic or angle brackets



LED SYSTEM LIGHT

- Innovative LED technology specially made for Rittal Enclosures.
- A special optical cover with Fresnel structure for lighting tailored to the geometry of the enclosure
- Up to 1200 lumens, directed selectively into the enclosure



INDUSTRY LIGHT WIL

- The WIL is an extremely small and robust LED light in IP67, specifically designed for installation in standard control cabinets.
- Extremely robust with a slim aluminum housing
- Available in different lengths and colours: red, blue, or 6500 K
- M12 connector for fast and easy connection to the power supply



WE'RE OPEN 24/7
Shop Online at ebhorsman.com





INDICATION & SIGNAL LIGHTING

SIGNAL TOWER LIGHTS

Multi-segment LED tower lights give machines a voice, conveying critical information in a clear, visual manner. AC and DC voltage, fourteen color options, six audible alarm styles, multiple intensity levels, three connection types and optional wireless or IO-Link communication provides virtually limitless possibilities in both preassembled and field configured units.



TOUCH BUTTONS AND PICK-TO-LIGHT

Banner is the leader in ergonomic, visual and sealed operator touch buttons for industrial applications. Since Banner Touch Buttons can have multiple colours and I/O capabilities, they can replace several conventional buttons, making them ideal in lean manufacturing environments.

Pick-to-light sensors help manufacturers reduce the risk of error in the assembly process, boosting product quality and reducing cost.



INDICATORS

Banner's indicators offer a wide variety of bright, highly visible models ranging from daylight visible to multiple colors. Indicators have a rugged design for long-term use and require no additional protective box. Flexibility in design, size and mounting provides a unique solution for many applications.

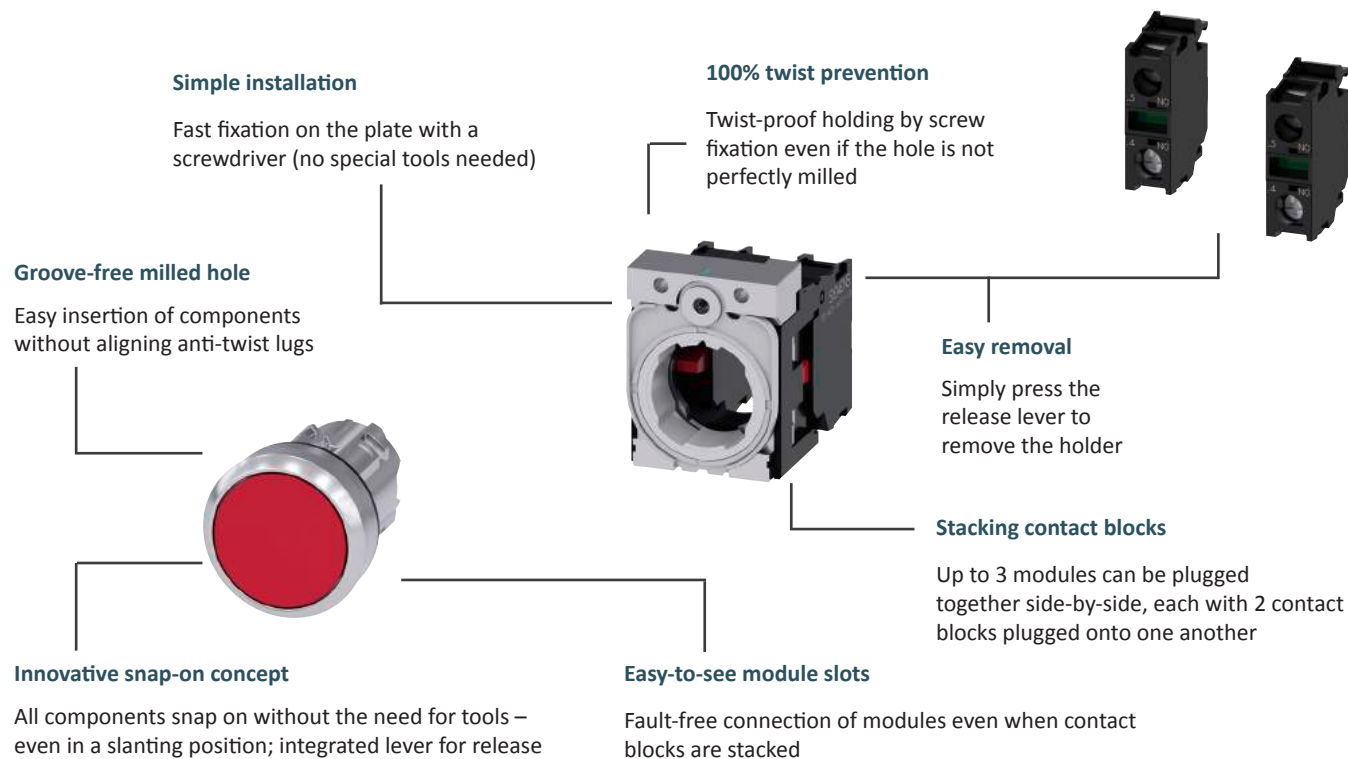




PILOT LIGHTS, PUSH BUTTONS, & SWITCHES

MODULAR DESIGN

- Order the actuator, the holder and the LED contact module as separate items
- Freedom to combine products ensures maximum flexibility, as you can stock them individually as required



WE'RE OPEN 24/7
Shop Online at ebhorsman.com





FUSE HOLDERS & FUSES

MERSEN FUSES

- UL / CSA / IEC General Purpose Fuses.



US3J & US6J ULTRASAFE™ CLASS J FUSE HOLDERS

- The US3J accommodates 30A class J
- The US6J accommodates 60A class J
- Finger-safe IP20 protection
- Optional indicator lights
- DIN-rail mount
- Compact footprint
- Quick, easy fuse change
- Volts: 600VAC/DC
- SCCR: 200kA



DISTRIBUTION BLOCK

Finger-safe protection: Fully insulated block ensures touch safe isolation of live parts. Recessed termination screws and wire openings provide IP20 grade protection and qualify as “fingersafe” per IEC 529





POWER SWITCHING & MONITORING

DISCONNECT SWITCHES

- Main disconnecting means, fusible and non-fusible
- Lock Out / Tag Out devices to isolate a load for maintenance, service or repair
- Transferring low voltage circuits on load



POWER METERING

Helping to improve the energy performance of buildings and installations

- Single & multi circuit power & energy meters
- Enclosed single & multi-point metering solution
- Current sensors
- Communication gateways and data loggers



MELTRIC SWITCH-RATED PLUGS & RECEPTACLES

- Spring-loaded butt contacts
- Enclosed arc chambers
- Spring-assisted terminals
- All SWITCH-RATED devices (DSN, DS and DB) feature DECONTACTOR™ Technology
- Horsepower ratings
- Short circuit ratings up to 100 kA in fuse protected circuits
- UL & CSA switch-ratings



WE'RE OPEN 24/7
Shop Online at ebhorsman.com





TERMINAL BLOCKS & BARRIERS

KLIPPON® CONNECT A-SERIES MODULAR TERMINAL BLOCKS

- Integrated push-button clamp actuator for safer wiring and simple handling
- Uniform integrated test point for easy continuity and potential/current checks
- Current identification area on jumpers
- Spring-loaded mounting foot to compensate for rail size fluctuations

Weidmüller 



MAXGUARD CONTROL VOLTAGE DISTRIBUTION SYSTEM

- Time savings of up to 20% due to unique cross-connectors between load monitoring and potential distribution terminals
- Extreme ease of service during commissioning and maintenance
- Practical disconnecting lever for simple galvanic isolation of the load circuit
- Potential distributors with a 6.1mm pitch ensure space-savings of up to 50% on the rail

Weidmüller 

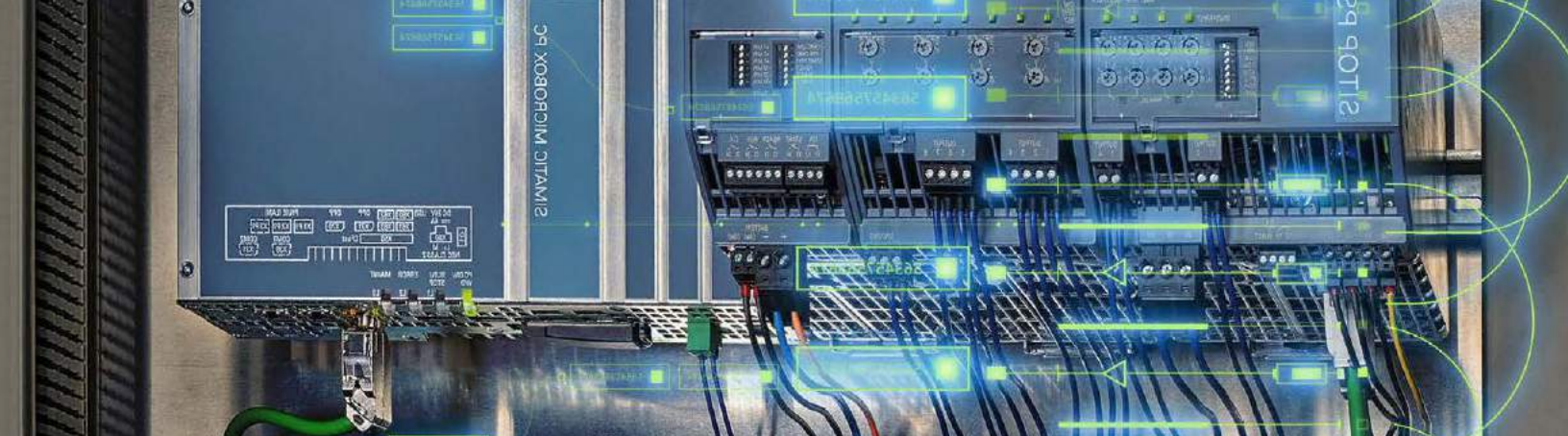


INTRINSIC SAFETY ISOLATED BARRIERS: K-SYSTEM

For explosion protection, consider Isolated Barriers from P+F's K-System interface family. K-System offers an extensive range of intrinsic safety interface modules for many signals and applications - from simple isolators to highly functional modules.

 **PEPPERL+FUCHS**





SIEMENS POWER SUPPLIES

SITOP COMPACT POWER SUPPLIES

- Integrated push-button clamp actuator for safer wiring and simple handling
- Uniform integrated test point for easy continuity and potential/current checks
- Current identification area on jumpers
- Spring-loaded mounting foot to compensate for rail size fluctuations

SIEMENS
Ingenuity for life



SELECTIVITY MODULE POWER SUPPLIES

- Full range switched-mode power supply units provides a controlled 24 V DC power supply and other input voltages
- Unique spectrum of DC UPS and add-on modules extends the power supply range to protect the 24V supply against problems on the main and on the DC side
- Efficiency rating of up to 95%
- Small mounting surface thanks to its slim design
- Wide-range input for 85 V to 264 V AC or 110 V to 300V DC
- Up to 28 % energy savings compared to similar units
- Low energy consumption during no-load or standby operation
- Adjustable output voltage
- Temperature range from $-20\text{ }^{\circ}\text{C}$ to $+70\text{ }^{\circ}\text{C}$

SIEMENS
Ingenuity for life



WE'RE OPEN 24/7
Shop Online at ebhorsman.com



NEWS



SCALANCE ETHERNET SWITCHES & CABLE TECHNOLOGY

INDUSTRIAL UNMANAGED ETHERNET SWITCHES

- XB-000/100 Industrial Ethernet switches are compact, unmanaged switches with up to 8 ports
- Integrated auto-crossover function makes the use of uncrossed connection cables possible
- Automatic detection and negotiation of the data transmission rate by means of auto-sensing and auto-negotiation function



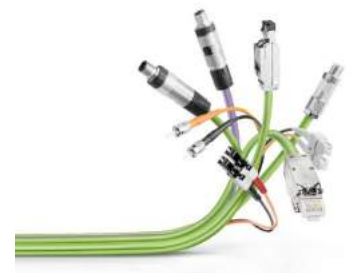
INDUSTRIAL MANAGED ETHERNET SWITCHES

- X-200/300 Industrial Ethernet Switches are managed with up to 24 ports
- The managed switches of the SCALANCE X-200 product range are very well suited for the setup of line, star, and ring topologies (10/100 Mbps)
- 8, 16, 24 electrical port options
- 4, 6, 12 electrical port with optical options



FASTCONNECT (FC) SYSTEM

- Industry-compliant structured cabling
- Reliable shield contacting and strain relief as well as, efficient EMC shielding for copper cabling
- Use of standard-compliant connection systems for Industrial Ethernet, PROFINET, EtherNet/IP and PROFIBUS





CIRCUIT BREAKERS & TRANSFORMERS

MINIATURE CIRCUIT BREAKERS

- 5SJ4 Miniature circuit breakers can be used as “branch circuit protection”
- UL 489 from 0.3 to 63A
- Suitable for branch circuit and feeder protection applications
- Visible indicator for ON and OFF/Trip
- Standard DIN rail mounting (35 mm)



HPS SPARTAN TRANSFORMER

- For applications where high inrush or machine tool duty are not necessary
- Standard molded terminal blocks or primary and secondary up to 3000VA (30A) units
- Bolted core construction & Bolt-on mounting brackets
- All units supplied with primary and secondary voltage links jumpers (increase range of application per unit)



MOLDED CASE CIRCUIT BREAKERS

- Various trip options such as thermal magnetic trip, electronic trip, electronic trip with metering, electronic trip with metering and communications
- LI, LSI, LIG, LSIG trip functions available
- 100% ratings and current limiting available
- Up to 100kA at 600VAC, and 200kA rating at 480VAC



WE'RE OPEN 24/7
Shop Online at ebhorsman.com



NEWS



LINE REACTORS & RELAYS

HPS CENTURION R REACTORS

- Available in standard ratings from 0.5 HP (373 Watts) to 1000 HP (745 kilowatts), up to 600 V (690 V with de-rating)
- Compliant with UL, CSA, CE, IEC, and NEMA standards
- Minimization of harmonic distortion
- Mitigation of nuisance tripping
- Reduced line notching
- Extended life of switching components and motors
- Reduced audible motor noise and motor operating temperature



RELAYS

- General Purpose Relays
- PLC Style Relays
- Plug-in Style Relays
- Solid State Relays
- Timer relays



PROTECTION & INTERFACE CONVERTERS

- Intrinsic Safety Barriers
- Signal Conditioners
- Surge Protection
- Monitoring Relays





MOTOR STARTERS

SIEMENS SIRIUS MOTOR CONTROL PORTFOLIO

Your Complete Motor Solutions all in one place:

- Overloads
- Motor Circuit Protectors
- Contactors
- Soft Starters



SIRIUS 3RA6 COMPACT STARTERS

- Wide-band control voltage (24V, 42–70V, 110–240V, all AC/DC)
- Automatic device reset in case of overload
- Single complete device with one order number (short-circuit protection, contactor, and overload protection all in one device)
- Option to use infeed system which allows multiple compact starters to be fed off single incoming terminal reducing wiring and installation time.



SOFT STARTERS

SIRIUS soft starters are the best solution when direct-on-line or star/delta starting are not suitable for three-phase motors.

- SIRIUS 3RW55: High Performance (7.4 - 1,609 hp)
- SIRIUS 3RW52: General Performance (7.4 - 750 hp)
- SIRIUS 3RW30/3RW40/3RW50: Basic Performance (2 - 4 22 hp)



WE'RE OPEN 24/7
Shop Online at ebhorsman.com



NEWS



PANEL INTERFACES

CORDSETS AND RECEPTACLES

- Single and dual ended cordsets and panel mount receptacles for carrying power and/or signal to your components and processes
- Custom configurations and pre-assembled cordsets availability upon request



HEAVY-DUTY CONNECTORS

- We will help you choose the right combination of inserts, housings, and contacts from an ensemble of fixed-pole connector inserts in a variety of sizes
- Pre-assembled connectors available upon request



Festo is a leading manufacturer of pneumatic for process control and factory automation solutions. Ask us about Festo solutions for air handling, compression and regulation today!

PROCESS AUTOMATION | INDUSTRIAL AUTOMATION | MOTION TERMINAL



REMOTE I/O & REMOTE CONNECTIVITY (CLOUD SOLUTIONS)

MULTI-PROTOCOL REMOTE I/O

- Compatible with major PLC brands and communication protocols (Profinet, EtherNet/IP, Modbus)
- Local programming capabilities for distributed control using either proprietary or open-source software



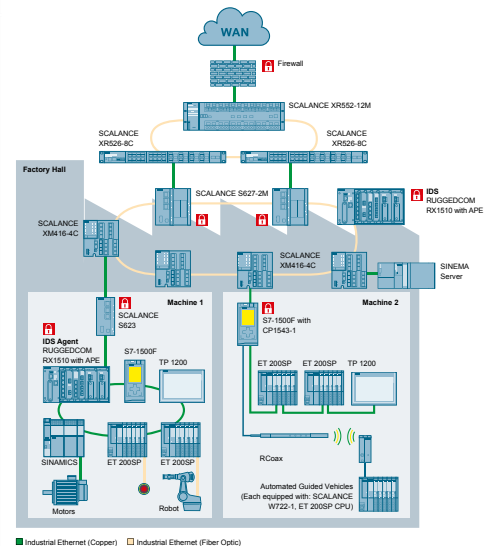
LOCAL WIFI ACCESS (ANYBUS WIRELESS BOLT & BRIDGE)

- Anybus Wireless Bridge and Anybus Wireless Bolt, a connection point for on-machine mounting, share the same technology making them able to communicate seamlessly, opening up for even more innovative wireless system solutions



REMOTE ACCESS

- Service your equipment from anywhere in the world
- Easy remote access for teleservice and remote maintenance
- Continuous or on-demand connection
- Working over WAN, LAN, WiFi, SIM Card
- Secure connection via VPN
- Data logging via 3rd party cloud, private cloud, or onboard



WE'RE OPEN 24/7
Shop Online at ebhorsman.com





PROGRAMMABLE LOGIC CONTROLLER, HMI & MOTION

PROGRAMMABLE LOGIC CONTROLLER (PLC)

Every machine and plant places its own unique demands on system performance and application complexity. You'll find the right controller for your application in our interactive SIMATIC controller portfolio.

- Entry-Level PLC: SIMATIC S7-1200
- High-End PLC: SIMATIC S7-1500

SIEMENS
Ingenuity for life



VARIABLE FREQUENCY DRIVES (VFD) & MOTION

No matter what application, the SINAMICS family offers drives to meet your unique requirements

- General Purpose Drive: SINAMICS G120
- Value Drive: SINAMICS V20
- Servo Drive: SINAMICS S120
- Servo Drive (requires S7-1500): SINAMICS S210

SIEMENS
Ingenuity for life



SIMATIC HMI BASIC & COMFORT PANELS

- High-resolution, dimmable widescreen displays from 4" to 12" (22" with Comfort panels) with 64,000 colors (16 million colors with Comfort Panels)
- Touch or key operation & viewing of up to 170°
- Integrated system card for automatic backups in Comfort panels
- PROFIBUS or PROFINET versions for process communication (Comfort includes PROFIenergy)

SIEMENS
Ingenuity for life



E.B.HORSMANPAC

Process, Automation, Controls & Motion Division

MOTOR CONTROL PANEL (MCP)

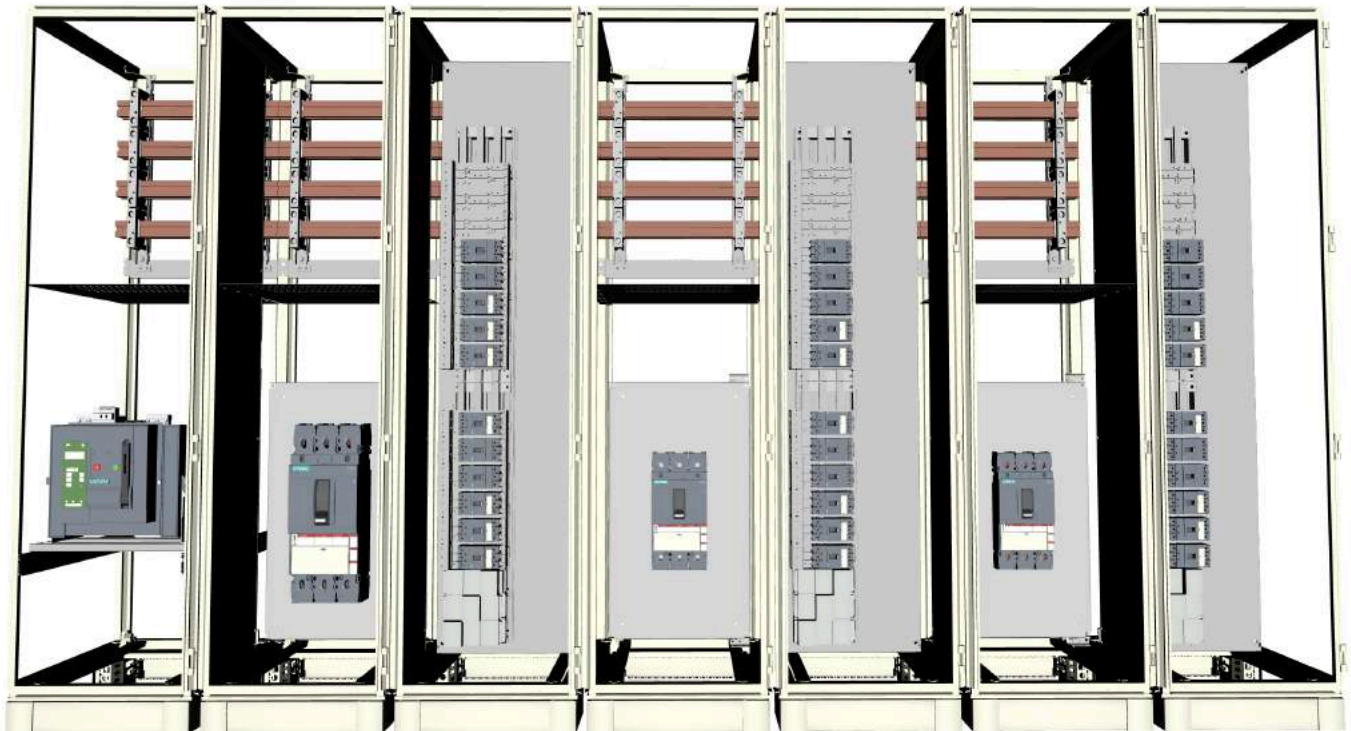
An alternative to MCCs, the Rittal MCP is comprised of TS8 enclosures, a power bus, and motor control components selected based on the motors and power requirements of your installation

Faster Delivery

Better Pricing

Smaller Footprint

Flexible & Custom Design



WE'RE OPEN 24/7
Shop Online at ebhorsman.com



NEWS



E.B. HORSMAN & SON COMPLETE INDUSTRIAL SOLUTIONS
AUTOMATION, CONTROLS, & MOTION • PROCESS INSTRUMENTATION
DATA COMMUNICATIONS • LIGHTING SOLUTIONS

BC LOWER MAINLAND

Burnaby
3935 2nd Avenue
Burnaby, BC V5C 3W9
Tel: 604.292.4800

Langley
#101 - 20550 Duncan Way
Langley, BC V3A 7A3
Tel: 604.533.1275

Richmond
12360 Vickers Way
Richmond, BC V6V 1H9
Tel: 604.273.1981

Surrey
13055 80th Avenue
Surrey, BC V3W 3B1
Tel: 604.596.7111

Head Office
19295 25th Avenue
Surrey, BC V3Z 3X1
Tel: 778.545.9916

NORTHERN BC

Dawson Creek
1121 97th Avenue
Dawson Creek, BC V1G 1N5
Tel: 250.782.4896

Prince George
2255 S. Quinn Street
Prince George, BC V2N 2X4
Tel: 250.563.0575

Terrace
5000 Pohle Avenue
Terrace, BC V8G 4S8
Tel: 250.635.6379

Williams Lake
527 S. MacKenzie Avenue
Williams Lake, BC V2G 1C8
Tel: 250.392.7795

BC INTERIOR

Cranbrook
Unit A 800 Industrial Road # 2
Cranbrook, BC V1C 4C9
Tel: 250.489.4591

Kamloops
B - 983 Camosun Crescent
Kamloops, BC V2C 6G1
Tel: 250.374.3191

Penticton
401 Okanagan Avenue
Penticton, BC V2A 3K1
Tel: 250.492.4032

Vernon
5203 24th Street
Vernon, BC V1T 8X7
Tel: 250.545.2191

VANCOUVER ISLAND

Campbell River
1030 B - 9th Avenue
Campbell River, BC V9W 4C2
Tel: 250.287.9265

Courtenay
2615 Moray Place
Courtenay, BC V9N 8A9
Tel: 250.334.0338

Duncan
5286 Polkey Road
Duncan, BC V9L 6W3
Tel: 250.748.3377

Parksville
1023 Herring Gull Way
Parksville, BC V9P 1R2
Tel: 250.954.1797

Victoria
816 Cloverdale Avenue
Victoria, BC V8X 2S8
Tel: 250.475.1999

ALBERTA

Calgary
#104 11080 50th Street SE
Calgary, AB T2C 5T4
Tel: 587.620.0020

Edmonton
7223 68th Avenue NW
Edmonton, AB T6B 3T6
Tel: 780.490.7740

SASKATCHEWAN

Saskatoon
134 - 815 66th Street
Saskatoon, SK S7P 0E6
Tel: 306.244.2200

info@ebhorsman.com | 888-HORSMAN | ebhorsman.com

