

# The Integrated Mosquito Management (IMM) Advantage: Superior Control and Health Protection for Construction Sites

## A Comprehensive Approach to Protecting Your Workers From Nuisance Mosquitoes and Vector-Borne Diseases

The engineering, construction, and development industries cultivate infrastructure that supports every facet of our society. With most of their time spent outdoors, crews consistently work through difficult and sometimes dangerous conditions, and many do not realize that this includes exposure to mosquitoes.

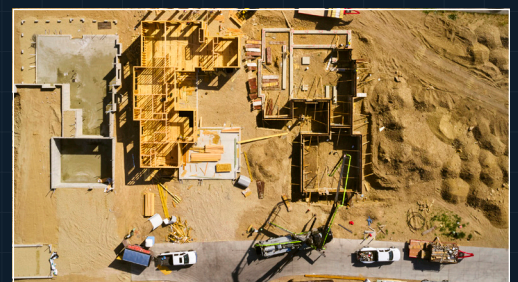
Nuisance mosquitoes can be distracting while workers operate large machinery or complete tasks that require vigilance and precision. Mosquitoes are also responsible for spreading deadly vector-borne diseases such as Zika, West Nile virus, and Yellow Fever, which pose a serious threat to your teams and may result in project delays.

## A Proactive Approach

A comprehensive and proactive approach to mosquito management involves targeting mosquitoes at all stages of the lifecycle to keep populations in check. Professionals utilize many tools and strategies to alleviate immediate problems and establish long-term control, leading to a happier and safer workplace.



Mosquitoes reproduce anywhere that water can pool, and construction sites provide them with several places for them to lay their eggs:



- Ditches / puddles
- Tarps
- Buckets
- Tires / truck beds
- Garbage cans / dumpsters
- Toolboxes
- Trash / debris
- Outdoor faucets



## Surveillance and Disease Testing

Regular monitoring and sampling of local mosquitoes allow professionals to identify the types of species present, the disease risk, and the areas where populations have proliferated.



## Data Collection

Data gives insights into mosquito breeding areas and populations, disease threats and the potential for insecticide resistance. It allows us to effectively treat the right places at the right times, reducing the amount of spraying on the jobsite. Collected data is recorded in VDCI's proprietary database and reported to customers on a recurring basis.



## Ground Applications

Ground crews use advanced spray technologies and EPA-registered products to target mosquitoes at both the adult and larval stages. Applicators are trained in the safest mosquito control practices in accordance with national standards. Depending on the desire of the worksite, our professionals can carry out spraying via truck or foot.



## Aerial Applications

VDCI operates a robust fleet of planes and aerial drones. Ground crews can use professional drones to more efficiently and precisely apply product in areas around the property that are hard to reach on foot, allowing us to target regions that your typical commercial mosquito control company can't. Additionally, drone applications are quiet and less disruptive to work activities.\*

*\*Drones are configured with advanced software that inhibits filming in sensitive/residential areas.*

## Public Education



Education is key to ensuring that workers reinforce your mosquito management efforts. Our experts can assist with educational presentations at safety meetings so that workers are employing best practices to help limit mosquito breeding habitat around the construction site and have appropriate personal protection to help prevent bites:



**Defend** - Use EPA-approved insect repellent.

**Dress** - Wear light-colored clothing, closed-toe shoes, long sleeves, and long pants while outdoors.

**Drain** - Eliminate standing water sources where mosquitoes breed.

**Dusk & Dawn** - Avoid the outdoors during the times that mosquitoes are most active.



We know your partnerships with management companies and associations are important. By establishing a mosquito management program in the early stages of planning, you'll enhance the lifestyle of the owner by helping ensure a safer and nuisance-free community or property. Additionally, VDCI's experts can help facilitate a smooth transition of mosquito management efforts by maintaining a safe, vector-free environment before people move in.

Construction sites have a lot of obstacles that workers have to navigate around, but mosquitoes don't have to be one of them. By working together, we can help reduce the concern of these harmful pests so that your colleagues can have peace of mind while working on site.



Contact our experts at [admin@vdcinet](mailto:admin@vdcinet) or call **866.403.4111** so that they can help you develop a custom IMM program to meet your workplace's needs.