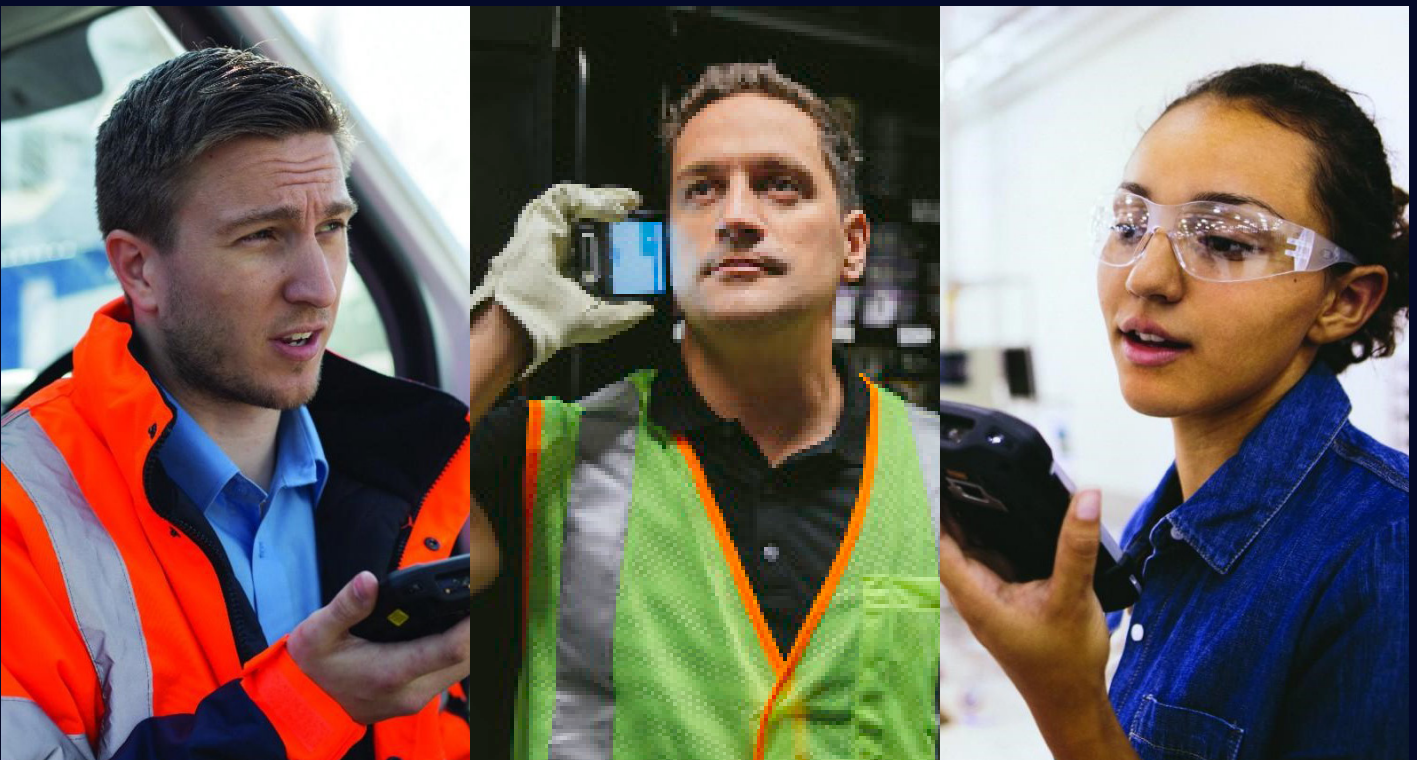


CONNECT TEAMS AT THE TOUCH OF A BUTTON - WHEREVER THEY ARE

HAULAGE | COURIERS | WAREHOUSES | DISTRIBUTION | HEALTHCARE | UTILITIES | RETAIL | HOSPITALITY | MORE



Zebra Workforce Connect (WFC) is an app which allows users to communicate instantly and clearly at the touch of a button with nationwide coverage.

Compatible on any Android, iOS or Windows 10 device, WFC can unify an organisation by removing all physical and geographical barriers between users, allowing them to work efficiently and safely.

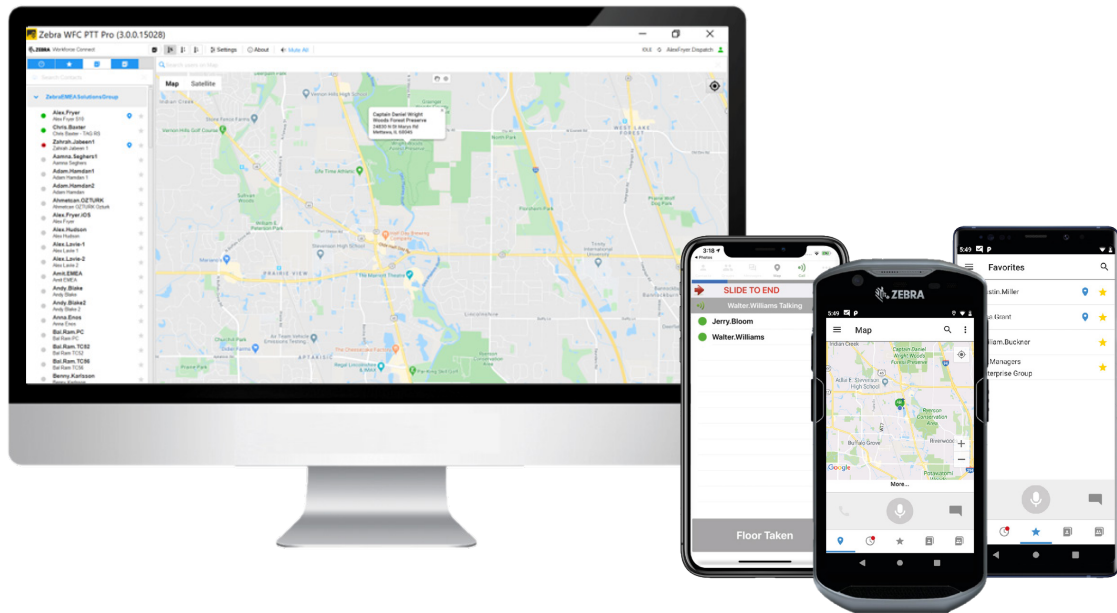


CONNECT TEAMS BETTER THAN EVER BEFORE WITH PUSH-TO-TALK

Keeping teams connected is hard, especially when they are spread out over wide geographical areas and always on the move. Giving them a platform to communicate instantly and at just one touch of a button allows them to collaborate better than ever before.

Many users in the transport & logistics, distribution, warehousing, healthcare, retail and hospitality and utilities sectors rely on smart devices for everyday tasks like scanning, job ticketing and delivery administration. Many of these users, however, carry a secondary device for communication, which often results in inefficiencies and represents another business cost. **That's where WFC comes in** - users can communicate instantly with colleagues both inside and outside the four walls using their chosen device.

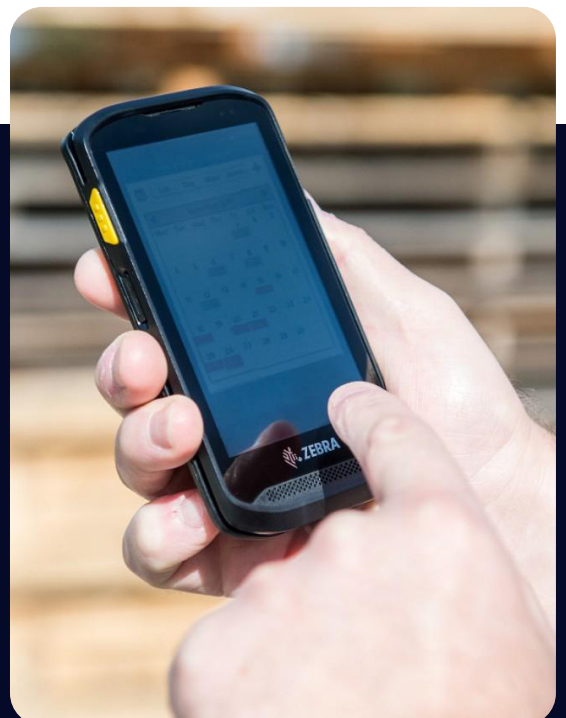
NEW LEVELS OF COMMUNICATION EFFICIENCY FOR YOUR TEAMS

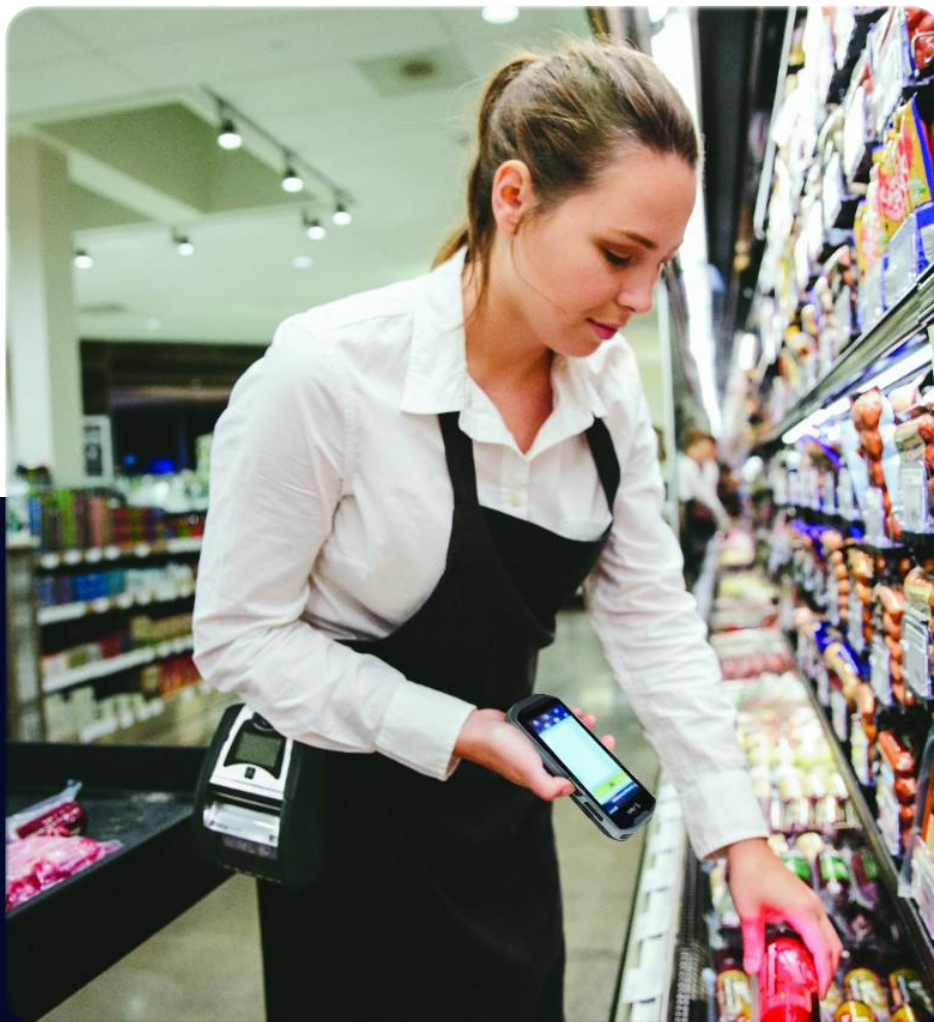


WFC gives organisations the ability to connect their employees in different teams and geographical locations, regardless of the device they use. In real-world terms, it means that a logistics co-ordinator using a Windows PC, a warehouse operative using a Zebra Touch Computer and a field-based sales agent using an Android or iOS smartphone can instantly communicate via push-to-talk, giving the business communication flexibility and efficiency like never before.

Which devices are compatible with Workforce Connect?

- Zebra Touch Computers
- Zebra Enterprise Computers
- Zebra Rugged Tablets
- Android Smartphones (GMS certified)
- Android Tablets (GMS certified)
- Apple iPhones
- Apple iPads
- Windows 10 PCs





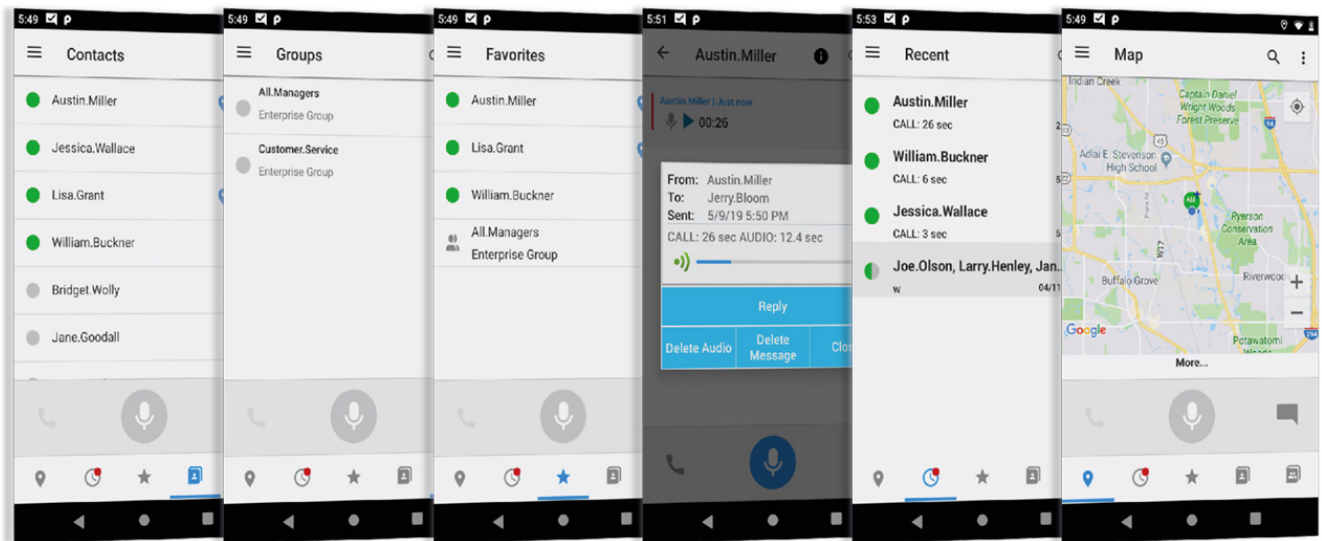
THE SCALABLE SOLUTION FOR ANY SIZED BUSINESS

With goalposts often changing and customers' expectations always increasing, businesses are having to constantly adapt and improve operationally. WFC adds significant value to businesses looking to operate more efficiently in two key areas.

It is device-agnostic, meaning it is compatible with all Android and iOS smart devices as well as Windows 10 PCs, giving users a tool to communicate in new ways regardless of the devices they use.

It is also incredibly **simple to set up and integrate with your teams**. The WFC app runs seamlessly in the background of your chosen device, and is managed via an intuitive online portal.

KEY FEATURES & FUNCTIONALITY



Create as many talk groups
as you need



Easy over-the-air
programming and fleet
management



Replay voice messages
if you miss them*

*not yet available on iOS

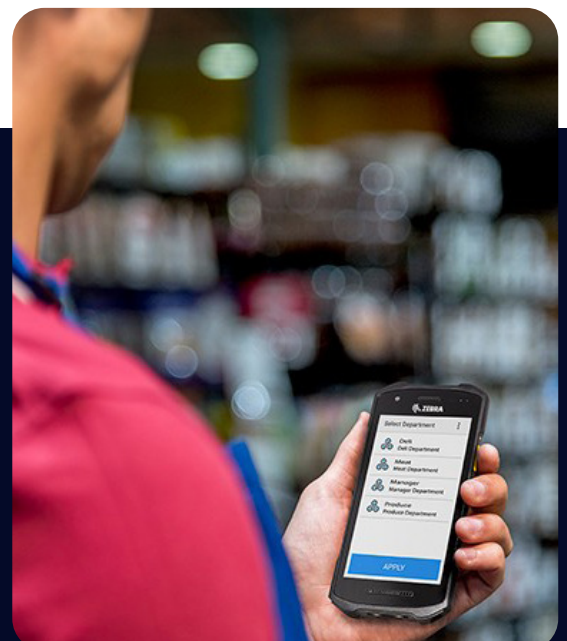


Real-time location with Google/iOS maps

WFC's user interface is designed for workers to achieve total communication flexibility, no matter where they are or where they are going. It is a **Google Material Design** app, which means the user experience is seamless and smooth and it is instantly familiar to users of consumer devices, requiring virtually no training to use.

KEY FEATURE: GOOGLE MATERIAL DESIGN

WFC is a certified Google Material Design application. Its user interface is designed to be easily learned and navigated, and is similar to the consumer smartphone experience most users are familiar with. This increases efficiency and minimises the need for staff training.





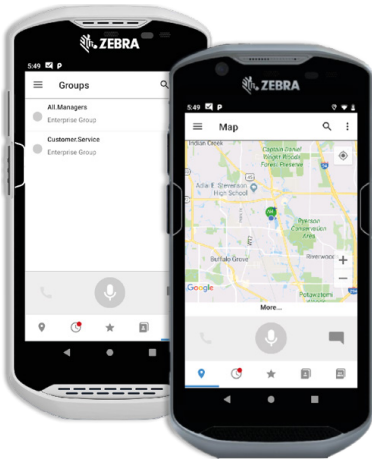
YOUR VOICE AND DATA APPLICATIONS ON ONE SMART DEVICE

Most businesses these days rely on data. That's why choosing the device a worker uses to run their vital data applications is so important - particularly for workers who are always on the move and need to take their data with them.

For this reason, WFC is so appealing for organisations who are looking to add voice communications to their operational system. When many businesses chose the devices they use day-to-day, they had to prioritise data capabilities over voice functionality. Now, they can experience the best of both by simply adding PTT functionality, without having to replace or invest in new devices.

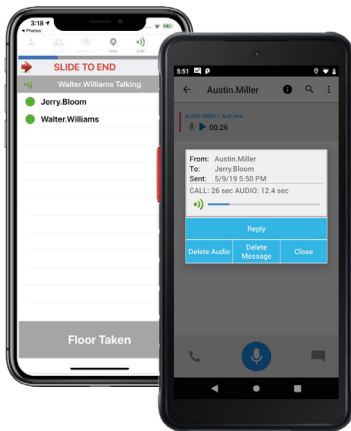
OPTIMISED FOR A HUGE RANGE OF SMART DEVICES

WFC is optimised for a huge range of devices, allowing organisations to save money by converging multiple devices into one and allowing users to quickly and easily boost their inter-connectivity.



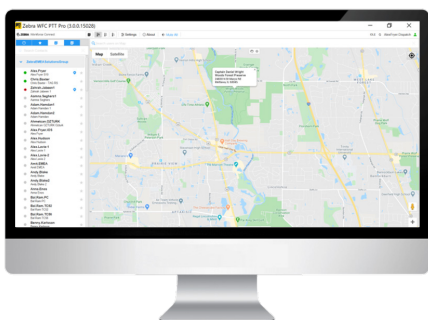
FOR PDA USERS

If you're already using a Zebra Touch Computer such as an EC30, TC21/26 or TC52x/57x, PTT Pro was made for you. All the devices' hard buttons are fully mapped to WFC's functions and the app is pre-installed, **so you're good to go.**



FOR SMARTPHONE USERS

If you're already using an Android or iOS smartphone to do your job, WFC will turn it into a two-way radio, running seamlessly in the background. Simply download "WFC PTT Pro" from your phone's app store **and you're good to go.**



FOR PC USERS

If you work in an office or control room environment, you can run WFC on your Windows 10 PC. Perfect for monitoring a fleet of vehicles or remote workers, simply install the application on your PC **and you're good to go.**

For a video overview on Zebra Workforce Connect, [click here.](#)



BOOSTING BUSINESS PERFORMANCE IN KEY MARKET SECTORS

Voice communication adds value to every organisation. The ability for workers to communicate efficiently and effectively ultimately results in improved levels of safety, customer service and profitability.

When workers are always on the move, however, voice communication suffers. Even if every worker has a mobile phone, significant time is lost in finding a contact, calling them and waiting for the call to connect.

As a result, push-to-talk communication platforms are becoming popular and even commonplace. WFC has been a success in many key market sectors where, if communication breaks down, things like efficiency, safety and customer satisfaction are the first to suffer.

BOOST BUSINESS PERFORMANCE WITH WORKFORCE CONNECT

HEALTHCARE

- Nurses
- Doctors/Physicians
- Lab Technicians
- IT/Engineering
- Maintenance
- Patient Transport
- Home Healthcare
- Emergency Response/Paramedics

MANUFACTURING

- Production Line
- Managers
- Engineers
- Goods In/Out
- Security
- Maintenance
- Quality
- Sales Reps

TRANSPORT & LOGISTICS

- Managers
- Route Planners
- Delivery Drivers
- Warehouse Operatives
- Forklift Drivers
- Dispatchers

HOSPITALITY

- Managers
- Housekeeping
- Security
- Front Desk & Concierge
- Events
- Catering Services

RETAIL DISTRIBUTION

- Warehouse Operatives
- Forklift Drivers
- Engineering
- Delivery Drivers
- Maintenance

UTILITIES

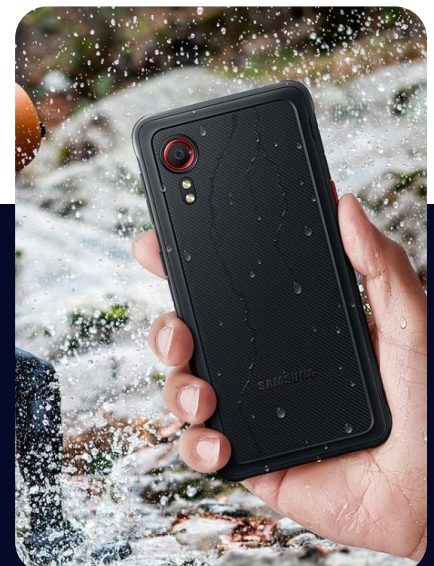
- Field Engineers
- Office-Based Engineers
- Control Room Operatives
- Call Centre Staff
- Sales Reps

RETAIL STORES

- Managers
- Store Assistants
- Regional Managers/Reps
- Headquarters Staff

RECOMMENDED: SAMSUNG RUGGED RANGE

Many businesses can't find devices which cost-effectively deliver the quality, reliability, longevity and security they need. [Click here to learn about Samsung's rugged range.](#)





START YOUR JOURNEY TO A FULLY CONNECTED WORKFORCE

There are millions of Zebra smart devices, Android and iOS smartphones and Windows 10 PCs in the UK which are used every day by businesses to manage their staff, data and systems. Many of these organisations would benefit hugely from Zebra Workforce Connect - **if you are one of them, get in touch today.**

Call us on **+44 (0) 1489 287 287**
Email us at **syndico@syndico.net**

