



Hytera Remote Video Microphone Body Worn Camera Solution

CAPTURE EVIDENCE | MANAGE ANTISOCIAL BEHAVIOUR | DETER CRIME

Body worn cameras are helping security personnel everywhere to protect not only themselves but the organisations they work for and members of the public they serve.

Capturing vital evidence in the field is becoming more and more important as organisations turn to the bodycam products with the best recording capabilities, most rugged and ergonomic design and cutting-edge technology. This is where **Hytera's Remote Video Microphone (RVM) range** comes in.

+44 (0) 1489 287 287

www.syndico.net/bodycam





Hytera RVMs: Key features & functionality



A body worn camera solution with industry-leading features

Hytera RVMs are equipped with a feature set which allows organisations to protect both themselves and the members of the public they serve. With features such as pre-and post-record, battery backup and live video streaming, Hytera RVM users are able to see everything and miss nothing.

Hytera has a solution for all users and use cases. Equip security personnel with a compact, rugged non-display camera for when they need to monitor general situations, or provide them with a display which can be worn facing outwards as a deterrent against antisocial behaviour.

Once Hytera body worn cameras have been used to capture evidence in the field, it is easy to securely upload and manage the data - there are software applications for organisations of all shapes and sizes.

Video pre-record

Up to 30 seconds previous footage can be held in short-term memory and added onto video evidence in case a user is slow to press "record".

Battery performance

The interchangeable batteries will deliver up to 9 hours continuous recording, and have a standby battery time of up to 250 hours.

Rugged build

Hytera body worn cameras are built to withstand harsh conditions, holding IP67 and MIL-STD-810G certifications.

Lightweight and compact

Although rugged, Hytera RVMs are easy to wear thanks to their lightweight design – there are compatible with KlickFast mounting options too.

Dual-microphone

Capturing vital audio to go with evidence is easy thanks to dual-microphone recording technology.

Fully programmable

Put your camera into covert mode, choose how evidence is watermarked or programme the PTT button to start recording.

Bodycam fact-file:

Academic research has endorsed the use of body worn video for multiple crime-related parameters, including environmental (scene or location), spatial (orientation) and subject features (face or object recognition) in creating true visual event representation.



A stand-alone BWV solution, or a total communication system

With Hytera, you have all the flexibility you need. Hytera RVMs are body worn cameras in their own right, and offer users a comprehensive stand-alone solution. However, when combined with Hytera's market leading two-way radios, the RVM delivers a complete solution that competitors are unable to provide.



Device and evidence management

Hytera's applications include single-camera management and programming (BWC Manager), single-site evidence management (Integrated Device Station) or multi-site MDM (SmartMDM Professional). All software applications are made easy by using the multi-charge and data dock (MCA22), which can be used to upload footage from several cameras at a time and has a slot for charging spare batteries for swift turnaround between shifts.

Stand-alone body worn cameras

Hytera RVMs boast all the great features you would expect from market-leading body worn cameras - long battery life (both use and standby), high-quality video recording (up to 1080P at 60 frames per second), digital encryption, password protected flash memory (no expandable storage) and KlickFast mounting accessories.

A total communication solution

Most body-worn camera operators either already use or need push-to-talk (PTT) communication with their teams. That's why Hytera RVMs have an integrated PTT button (which can also be programmed to start recording) and can connect to a Hytera DMR or multi-mode radio via Bluetooth or cable.

An integrated body worn video and PTT solution for professional users

Unlike any other bodycam on the market, Hytera's RVM will not only capture and securely store high-definition video, images and audio, but also integrate seamlessly with existing Hytera radios as a remote speaker microphone.

Hytera RVMs are a great choice for both private and public sector users. They are designed to perform and last even in the harshest environments, which is why all models within the range conform to both IP68 and MIL-STD-810G certifications.

And when used with Hytera's purpose-designed software solutions for secure, efficient and synchronised management of evidence, RVMs are the perfect tool for any security team, no matter the size, to protect themselves and everyone

Which sectors currently use Hytera RVMs?

- Law enforcement
- Door security
- Festivals and events security
- Shopping centre security
- High street security
- Retail store security
- Supermarket security
- Football stadium safety officers
- Indoor arenas security



Hytera bodycams at Aston Villa Football Club



VM580D body worn camera Specifications

- SIM card slot for connection to 3G/4G cellular network
- Records at 720P (60 frames/sec) and 1080P (30 frames/sec)
- 16 megapixel image sensor
- Records up to 10m in low-light environments
- Bluetooth 4.2 and Wi-Fi connectivity
- 3000mAh battery capacity, > 8 hours continuous use
- 5 minute built-in battery backup
- Charge time: < 4 hours
- Pre-and post-record function (30 secs)
- 2.0 inch touchscreen
- 121° diagonal, 110° horizontal and 71° vertical field of view
- AES-256 encryption
- .mp4 video format
- Micro-USB charge and data connection
- Weighs 172g (including battery and belt clip)
- Dimensions: 94 x 63 x 20mm (H x W x D)
- MIL-STD-810G and IP68 compliance, 2m drop tested



VM580D Compact LTE body worn camera

VM580D is an ultra-thin LTE bodycam which can also be used for push-to-talk communication and video live-streaming. It is designed to withstand harsh treatment, which is reflected in its IP68 and 2m drop-test certifications, and has an internal battery backup feature to prevent evidence being sabotaged.

Because of its form factor, VM580D is perfect for users who need a powerful body worn video device which doesn't weigh them down when they have to respond to a situation. And when used with Hytera's evidence management software applications, VM580D becomes a total solution for teams looking to stay connected and respond quickly.

VM580D - models and pricing

VM580D-32

32GB body-worn camera - £345.00 (ex. VAT)

VM580D-64

64GB body-worn camera - £385.00 (ex. VAT)

VM580D-128

128GB body-worn camera - £410.00 (ex. VAT)



VM750 body worn camera Specifications

- SIM card slot for connection to 3G/4G cellular network
- Records at 720P (60 frames/sec) and 1080P (30 frames/sec)
- 40 megapixel image sensor
- Records up to 10m in low-light environments
- Bluetooth 4.2 and Wi-Fi connectivity
- 3500mAh battery capacity, 11 hours continuous use
- Charge time: < 4 hours
- Pre-and post-record function (30 secs)
- 2.8 inch touchscreen
- 160° diagonal, 127° horizontal and 67° vertical field of view
- AES-256 encryption
- NFC-enabled ID switchover
- .mp4 video format
- Micro-USB charge and data connection
- Weighs 210g (including battery and belt clip)
- Dimensions: 116 x 61 x 26mm (H x W x D)
- MIL-STD-810G and IP68 compliance, 2m drop tested



VM750 Rugged LTE body worn camera

VM750D body-worn camera is designed to capture, store, and upload evidence such as pictures, videos, and audio in the field. It plays a leading role in building trust with the public, in promoting officer accountability, and in enhancing transparency between the police and the citizen.

VM750D boasts impressive features, including 2.8inch touch screen, 160 degree field-of-view camera, Bluetooth, SOS button, NFC-enabled ID switchover, IP68 rugged build and up to 11 hour recording battery life. Furthermore, its 40MP sensor can capture the most clear evidence, enhancing the fight against criminal and antisocial behaviour.

VM750D - models and pricing

TBC.





VM780 body worn camera Specifications

- 4G connectivity, nano SIM slot
- Weight 195g (including battery)
- > 9 hours battery life (continuous recording)
- > 250 hours battery standby time
- < 4 hours charging time
- 2500mAh battery, removable and rechargeable (3500mAh optional extra)
- 216 degree rotatable camera lens unit
- Field of vision: 140 degrees wide, 116 degrees horizontal
- Memory: 2GM ROM, 16GB / 32GB / 64GB / 128GB RAM
- 2.8 inch touch LCD display (back of unit)
- AES256 video encryption
- Max video resolution/frame rate - 1080P at 60 frames/sec
- Night vision range up to 10m
- Bluetooth 4.2
- Wi-Fi (802.11 b/g/n)
- MIL-STD-810G
- IP68
- Drop-test 2m
- 2 watt speaker power
- Electret microphone x 2 (-44dB)
- MicroUSB data connection



VM780 4G/LTE body worn camera

Hytera's flagship body worn camera, VM780 takes functionality to the next level. With a nano SIM slot, VM780 can broadcast video and PTT voice messages over wide areas utilising both public (4G/LTE) or private (Wi-Fi) networks.

Other elements of the VM780's feature set are also a step forward. It supports AES256 encryption for the highest level of data security, and its camera lens unit is rotatable by 216 degrees, giving extra flexibility when wearing the RVM.

Topping off the VM780's complete solution is its Android-based operating system which, accompanied by 2.8inch touch screen, gives users an experience similar to a smartphone which results in minimal staff training being required.

VM780 - models and pricing

VM780-32

32GB body-worn camera - £490.00 (ex. VAT)

VM780-64

64GB body-worn camera - £535.00 (ex. VAT)

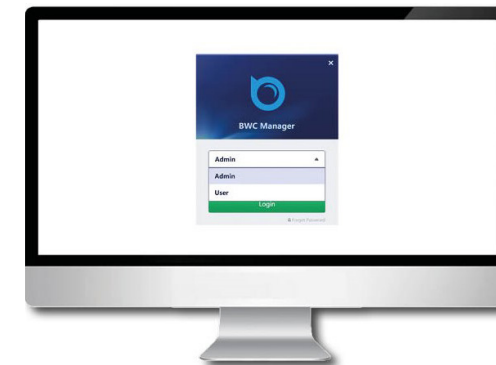
VM780-128

128GB body-worn camera - £580.00 (ex. VAT)





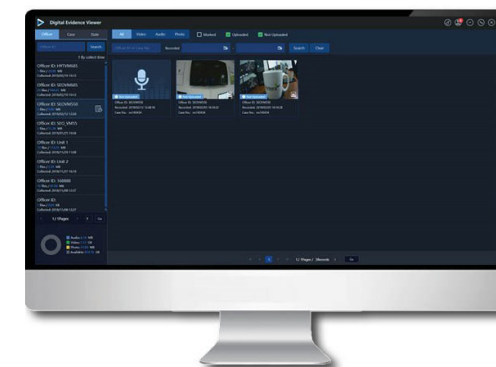
Hytera applications Evidence management software



BWC Manager

BWC Manager is Hytera's entry-level evidence management software, which also allows users to securely program their fleet of RVMs. Create all the important parameters for your body-worn cameras and manage evidence manually one camera at a time.

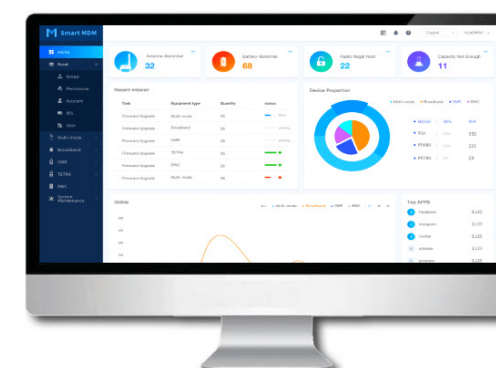
RRP: Free software



Integrated Device Station (IDS)

IDS is a professional evidence management solution. It operates stand-alone and allows footage to be automatically uploaded and removed simultaneously from multiple RVMs for retrospective management and to ensure the cameras' available memory is always optimised.

RRP: £645.00 (ex. VAT)



SmartMDM Professional

SmartMDM Professional can be used to manage multiple IDS sites from a central location. Key functions include remote configuration, remote firmware and software upgrades, application and connection whitelisting and programming. SmartMDM Professional is made up of:

- **Admin Client** - transmits control commands and pushes tasks, files and feature control to registered devices
- **MDM Server** - stores asset information, device records and files
- **IDS** - executes tasks received from Admin Client.

RRP: £8,500 (ex. VAT - includes 1 x IDS)

Hytera digital evidence management software applications

Capturing evidence in the field is one thing, but effectively and securely reviewing and managing crucial video data is another altogether.

Evidence management is an integral part of any body worn video solution. An effective evidence management platform protects not only the public involved in captured footage, but also enforcement personnel using bodycams and the organisations to which they belong. Hytera has catered for organisations of all types by offering a distinct range of software options.

Hytera's software applications have been designed with exactly this in mind - they sit independently so that IT departments have total flexibility on how to install them, and there are different applications which cater for different users' needs.

Featured accessory: RVM dock charger

Use the multi-unit dock with all applications to manage multiple units at once. Per six-way charger there are also six slots to charge spare batteries.





Hytera body worn cameras: See everything, miss nothing

If you are in position where you have a responsibility to protect the people around you, body worn cameras are the number one tool you need to not only capture crucial evidence relating to antisocial and criminal behaviour but also to deter it.

Speak to us today to learn about how businesses everywhere have used Hytera bodycams to create a safer environment for everyone.

Call us on **+44 (0) 1489 287 287**
Email us at **syndico@syndico.net**


SYNDICO


Hytera