

**Working with Fanshawe has its  
PERKS!**



**FANSHAWE**

# What we're covering

## Topic

**Regional Sites** - What is Fanshawe doing in your backyard?

**Co-op** - How to leverage Fanshawe's 60+ Co-op programs

**Career Services** - Connecting with our current students and grads

**International** - Benefits and best practices for hiring International students.

## Presenter

Heather MacKenzie-Card, Program Manager – School of Access and Regional Studies

Stephanie Hernandez, Co-op Consultant – Employment and Student Entrepreneurial Services

Christina Larke, Career Consultant – Employment and Student Entrepreneurial Services

Emily Low, Manager, International Student Engagement

# Huron/Bruce Regional Sites

**What is Fanshawe doing in your backyard?**

# Fanshawe College

- In 2012 Fanshawe College's established a partnership with REACH and Central Huron which was the beginning of programming in the Huron/Bruce sites
- Programming continues to grow and provides a foundation of a post-secondary education in Huron/Bruce  
(Kincardine, Tiverton, Stratford, Clinton, Goderich and Walkerton)

# Graduation

# 427

Graduates in October  
2017-2021 from **Huron/Bruce**  
sites



# Meeting Local Labour Market Needs

- Welding Techniques
- Mechanical Maintenance Industrial Millwright
- Carpentry Renovation Techniques
- Personal Support Worker
- Early Childhood Education
- Business Fundamentals



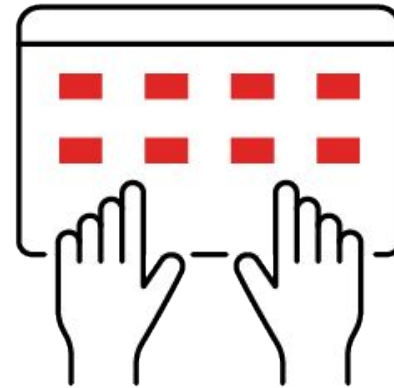
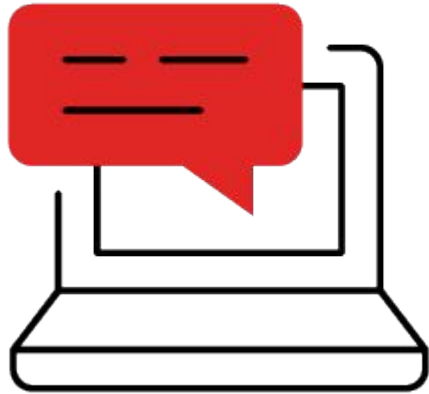
# Meeting Local Labour Market Needs

- Professional Office Essentials
- Health Care Office Essentials
- Project Management Essentials
- Human Resources Essentials



# Live-streaming

- Live-streaming is facilitated for our students which allows students the opportunity to be engaged in their own community or attend class in **Huron-Bruce**





# Corporate Training Solutions

- Corporate Training Solutions (CTS) specializes in industry-focused training solutions that equip employees with the knowledge, skills and expertise needed to succeed in their day-to-day work, to advance in their careers and to build organizational capacity.



Corpo  
Trainin  
Solutic

# Co-operative Education

How to leverage Fanshawe's 60+ Co-op programs

# What is Co-operative Education

## Students

Develop real-world skills while learning

Network with individuals and businesses in their industry

Get paid while enhance technical skills

## Employers

Attract highly-qualified personnel to the industry

Develop a pipeline of talent to recruit and train qualified students

Wage subsidies and Tax Credits

## Fanshawe

Responsive to the labour market

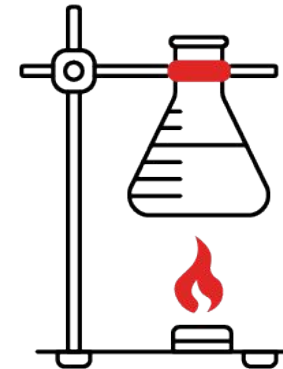
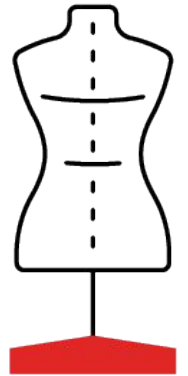
Fosters connections in the community

Serves our students through high-quality Work-Integrated Learning

# Co-op Programs

60+ programs across the College

- Tourism and Hospitality
- Renewable Energies
- Horticulture Technician
- Manufacturing
- Office Administration



# Before connecting with Fanshawe

## Review your Needs

What support are you looking for? What would the job criteria be?

To see all Co-op Programs:

[fanshawec.ca/coop](http://fanshawec.ca/coop)

## Program Progressions

See where co-op work terms are embedded in the program sequence.

Fall (Sept - Dec)

Summer (May - Aug)

Winter (Jan - Apr)

## Review Eligibility

Opportunity Must:

1. Align with at least 50% of learning outcomes
2. Be remunerated
3. 420 hours/term

Connect with a Co-op Consultant for any questions.

# How to Attract Co-op Students

## Housing and Transportation

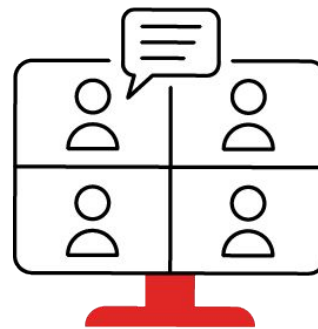
If a student will need to relocate, providing housing or housing resources.



## Valuable Learning Outcomes

Offer Professional Development opportunities

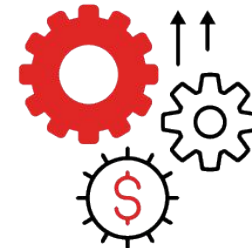
Room for growth and new training



## Competitive Compensation

Request wage bands

Identify additional types of compensation (pay member fees)





# Supports Available

**Connect with a Co-op Consultant to:**

Determine competitive **INDUSTRY WAGES**

Learn the best **TIMELINE** to target students

Help craft quality **JOB POSTINGS**

**PROMOTE** your opportunity directly to students

Full List of Consultants and Programs: [fanshawec.ca/coop](https://fanshawec.ca/coop)

For General Inquiries: [coop@fanshawec.ca](mailto:coop@fanshawec.ca)



# Career Services: Here for You!

Connecting with our current students and graduates

# Career Services

## Helps students become career and job search ready

- **Setting career goals:** Career Exploration and Assessment
- **Job Search:** Resume, Cover Letter, Job Search, Networking, LinkedIn, Social Media, Job Board
- **Interviewing:** Career Closet & Portfolio Project, InterviewStream and InStage
- **Events:** IGNITE Career Conference, FanshaweWorks, Career Fair, Headshots
- **Service options:** One on one appointments (virtual or in person), drop-ins, daily webinars



# How Employers Can Get Involved:

## Posting Opportunities

Job board for students and alumni

Promote postings and events via our Social Media channels



## Meeting Students

Career Fair (March 4, 2022 via PheedLoop)

Classroom visits

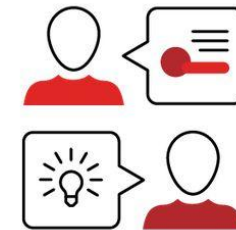
Info sessions



## Mentoring Students

InSPIRE Mentorship ([www.fanshawec.ca/inspire](http://www.fanshawec.ca/inspire))

Employer panels at student events



# HIRED!

## PRACHITI SHINGOTE

Construction Project Management



# Fanshawe International

**Benefits and best practices for hiring International students**



# Why should we hire an international student?

- Adaptability, perseverance and determination
- Proficient in multiple languages
- Courage to tackle the unknown
- High quality skills in leadership and independence
- Fresh perspective in the workplace
- Links to global markets
- Easier to attract and retain
- Cultural diversity shown to improve overall business performance and team dynamics

# Can international students work while they study?

**YES** - Up to 20 hours while they are studying full-time and Full-time during scheduled breaks.

As an employer, ensure the student has a **valid study permit** with the phrase “May accept employment on/off-campus...” printed on it.

Still require a SIN – starts with a 9

Eligible to work as soon as they begin their studies

# What if I want to hire an international student after they graduate?

- Students may apply for a post-graduation work permit after graduation.
- After obtaining a post-graduation work permit, you can hire them as you would any other employee.
- If you wish to keep them on, please refer to the Immigration, Refugee and Citizenship website.

# Can students who have successfully completed their program continue to work?

- 20 hours per week while waiting for their official program completing documents
- Full-time while the PGWP application is in process
- Fanshawe has International Student Immigration Advisors to support students throughout they journey.



# Really Useful Federal Resources

## **Hire a temporary foreign worker**

<https://www.canada.ca/en/immigration-refugees-citizenship/services/work-canada/hire-temporary-foreign.html>

## **Hire a permanent foreign worker**

<https://www.canada.ca/en/immigration-refugees-citizenship/services/work-canada/hire-permanent-foreign.html>

## **Services for employers to help attract global talent**

<https://www.canada.ca/en/immigration-refugees-citizenship/services/work-canada/hire-permanent-foreign/employer-liaison-network.html>

# Really Useful Provincial Resources

**The Business Immigration Services Team**

[Ontario Immigrant Nominee Program \(OINP\) | ontario.ca](#)



# Local Resources

[Local immigration Settlement Strategy](#) supported by Grey and Bruce County Councils - developed by the Grey Bruce Local Immigration Partnership (GBLIP).

**Welcoming Communities Grey Bruce**

<https://welcominggreybruce.ca/>

# Thank You!

Please feel free to ask us any questions!

**Heather MacKenzie-Card**, School of Access and Regional Studies  
hmackenzie-card@fanshawec.ca

**Stephanie Hernandez**, Co-operative Education  
s\_hernandez2@fanshawec.ca

**Christina Larke**, Career Services  
clarke@fanshawec.ca

**Emily Low**, International Student Engagement  
elow@fanshawec.ca