

57% of Businesses are Ready to Sustain Remote Work Indefinitely!

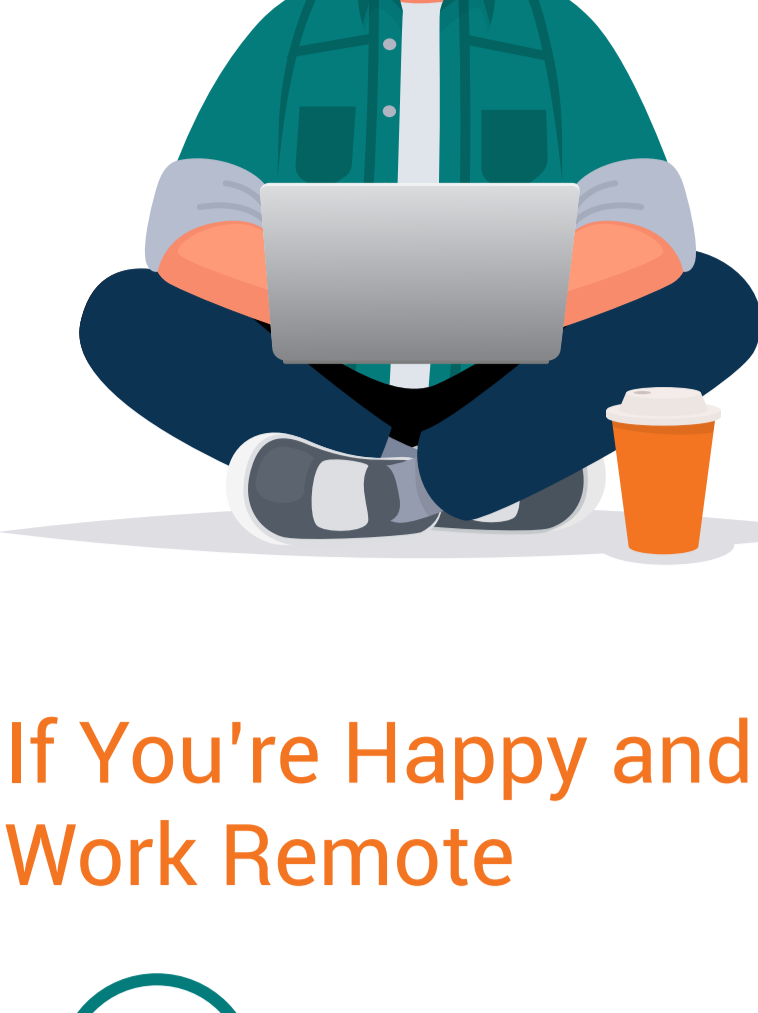
» WHY?

Survey Participants

- 49%** have between 21 and 75 employees
- 34%** less than 20 employees
- 10%** have a workforce of between 76-150
- 7%** have a staff over 150

Temporary Fix or Sustainable Business Plan?

- 57%** are ready to sustain their remote workforce indefinitely
- 36%** feel they can only maintain a remote workforce for the short term, six months to a year
- 4%** are unable to continue with a remote workforce any longer than 6 months
- 3%** are concerned they will be unable to maintain their remote workforces for longer than a few months



If You're Happy and You Know It, Work Remote

- 21%** report morale is higher
- 21%** report morale has decreased
- 58%** state morale remains unchanged

Does Microsoft help employees stay productive?

88% of companies that use the full Microsoft suite said their employee productivity remained unchanged or say productivity increased.

Takeaway
The leader in software helps employees maintain or increase productivity.

Productive Teams

- 30%** say they feel that their remote teams are evenly split between employees who have increased in productivity and those who have decreased
- 40%** feel that their employees are just as productive now as when they were on-site
- 16%** confess that their employee productivity seems to have decreased
- 14%** say that employee productivity has increased

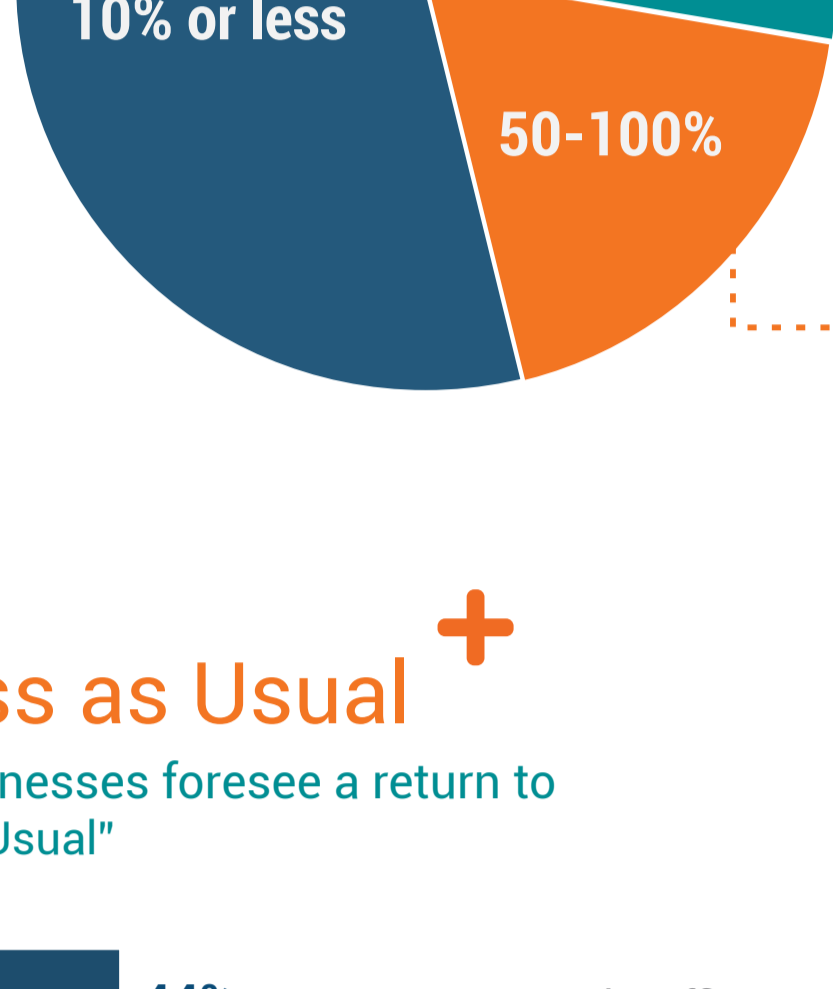
54%

Of employees are just as productive or more productive when working remotely!



REMOTE WORK TRENDS

Who is Working from Home?

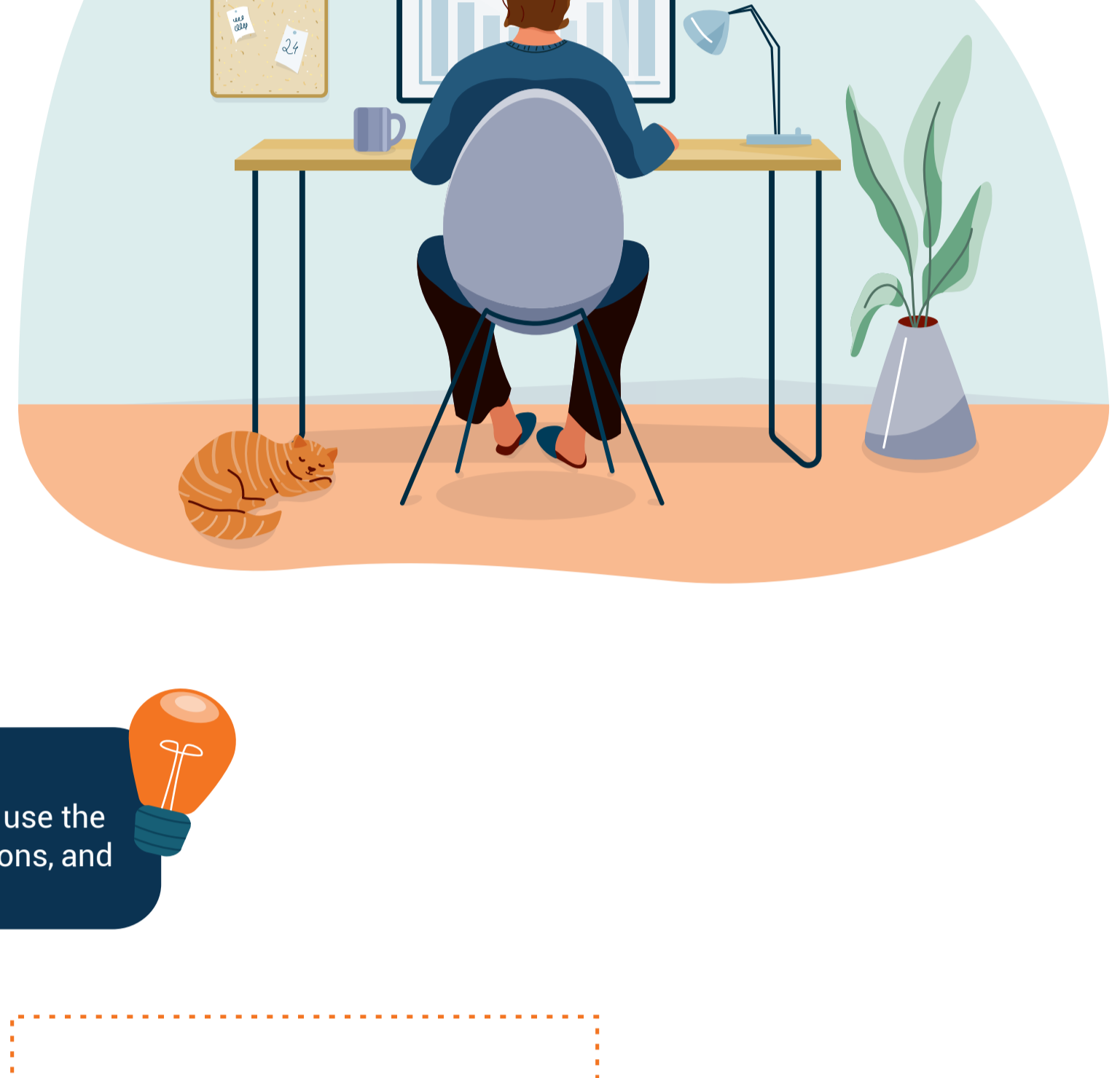


- 54%** of businesses surveyed said their remote workforce is current **10% or less** of their employees
- 12%** of participants report between **30 to 50%** remote workers
- 15%** of businesses said they are between **10 to 30%** remote workers
- 19%** have between **50 to 100%** of their workforce Working remotely.

Business as Usual

When do businesses foresee a return to "Business as Usual"

- 44%** expect to return to the office within six months
- 33%** do not expect to return to the office. Of these, **59%** use the full Microsoft suite while **41%** only use Microsoft for email or other individual applications
- 19%** report that they are unsure when they will return to normal operations.
- 4%** expect that it will take up to a year to return to the office



Interesting Fact

Of the companies that have over 50% of employees working remotely, **73%** use the full Microsoft suite. **20%** of these companies use some Microsoft applications, and **7%** do not use any.

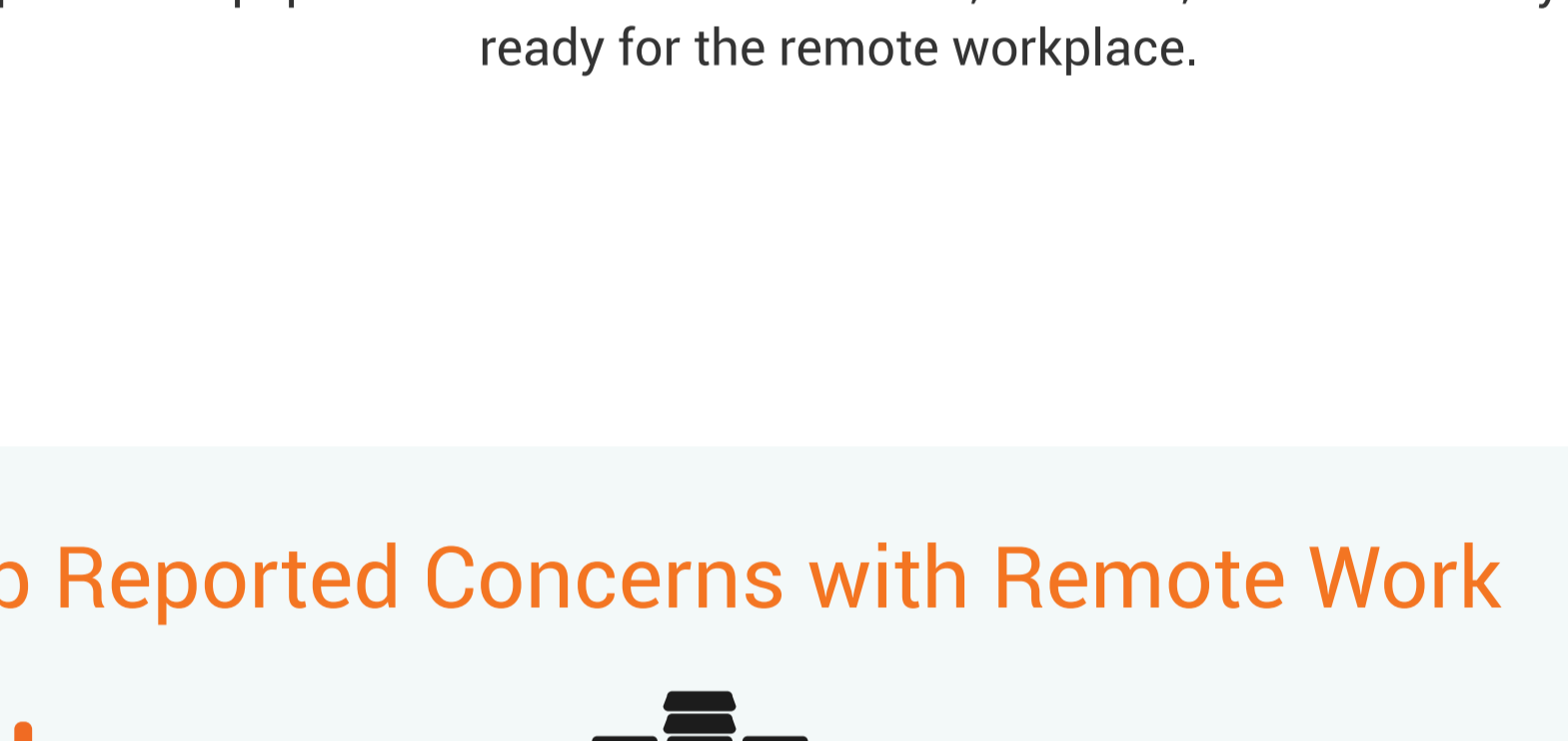
Living in the Cloud

- 57%** said their was no change to their organization's cloud services
- 24%** have shifted some services to the cloud while keeping other services on servers
- 8%** do not use cloud services at all
- 11%** have made a complete transition to cloud services



CONCERNS

Sudden Shift to Remote Work



36% of participants admit that they did not have the infrastructure in place to equip them for remote work. **64%**, however, stated that they were ready for the remote workplace.

Initial Lack of Planning Makes it Difficult to Sustain Remote Work

Top Reported Concerns with Remote Work

- Concerns with their IT budgets **26%**
- Concerns with Cybersecurity **22%**
- Concerns with network speed and reliability **19%**
- Concerned with permanent changes to transition some of their workforce to permanent remote work. **5%**

Confusion Abounds

- 47%** of businesses surveyed don't know all the applications employees are using
- 53%** of participants are aware of how many applications they use.

Takeaway
Not having a full inventory of applications used makes your cloud transition harder.

Personal Devices at Work? Big No No!

- 81%** are still relying on personal devices for work? A cybersecurity nightmare!
- 36%** of businesses have issued laptops, PCs, or Macs but employees are still using their own personal mobile devices
- 34%** of employees have been equipped with all the devices they need
- 21%** of businesses surveyed have equipped some employees with work-issued devices while allowing others to use their personal devices
- 9%** The bad news? 9% of employees are exclusively using their personal devices for work!

Cybersecurity Concerns

- How concerned are you about the level of cybersecurity your organization has while your employees are working remotely?
- 72%** admit they are concerned. In fact, **14%** say they are very concerned.
- 27%** do not feel they have any security issues
- 1%** admit they do not understand their business' cybersecurity platform

SOLUTIONS? TURN TO THE CLOUD

Microsoft, the leader in software helps employees maintain or increase productivity.



Tools for a Successful Transition

- 59%** of people that felt they were well-prepared for the sudden shift to remote work use the full Microsoft suite
- 10%** that felt prepared for the shift currently only use Microsoft for email
- 29%** that felt prepared for the shift use multiple Microsoft applications but not the full suite
- 2%** that felt prepared for the sudden shift to remote work aren't using any Microsoft products at all

Takeaway
No big surprise: the more Microsoft products a business used, the more prepared they were for the remote workforce transition

Collaborative Infrastructure

- 54%** report using the full Microsoft Suite
- 31%** use Microsoft for certain applications such as Outlook, Word and Teams
- 10%** use Microsoft only for Outlook email
- 5%** do not use Microsoft products (Down from 16% when surveyed in Q4 of 2020)

WHAT CAN A MODERN WORK PLACE LOOK LIKE FOR YOUR BUSINESS?

Start the journey for a successful future with cloud solutions

INSTANT ACCESS to all IT tools you need to make sure you business is prepared for the journey...



Visit <https://www.iconicit.com/modern-workplace-journeys> to download the free Modern Workplace Essentials Kit.

Ready to reach out for a more personalized remote workplace strategy? Email us at ask@iconicit.com