



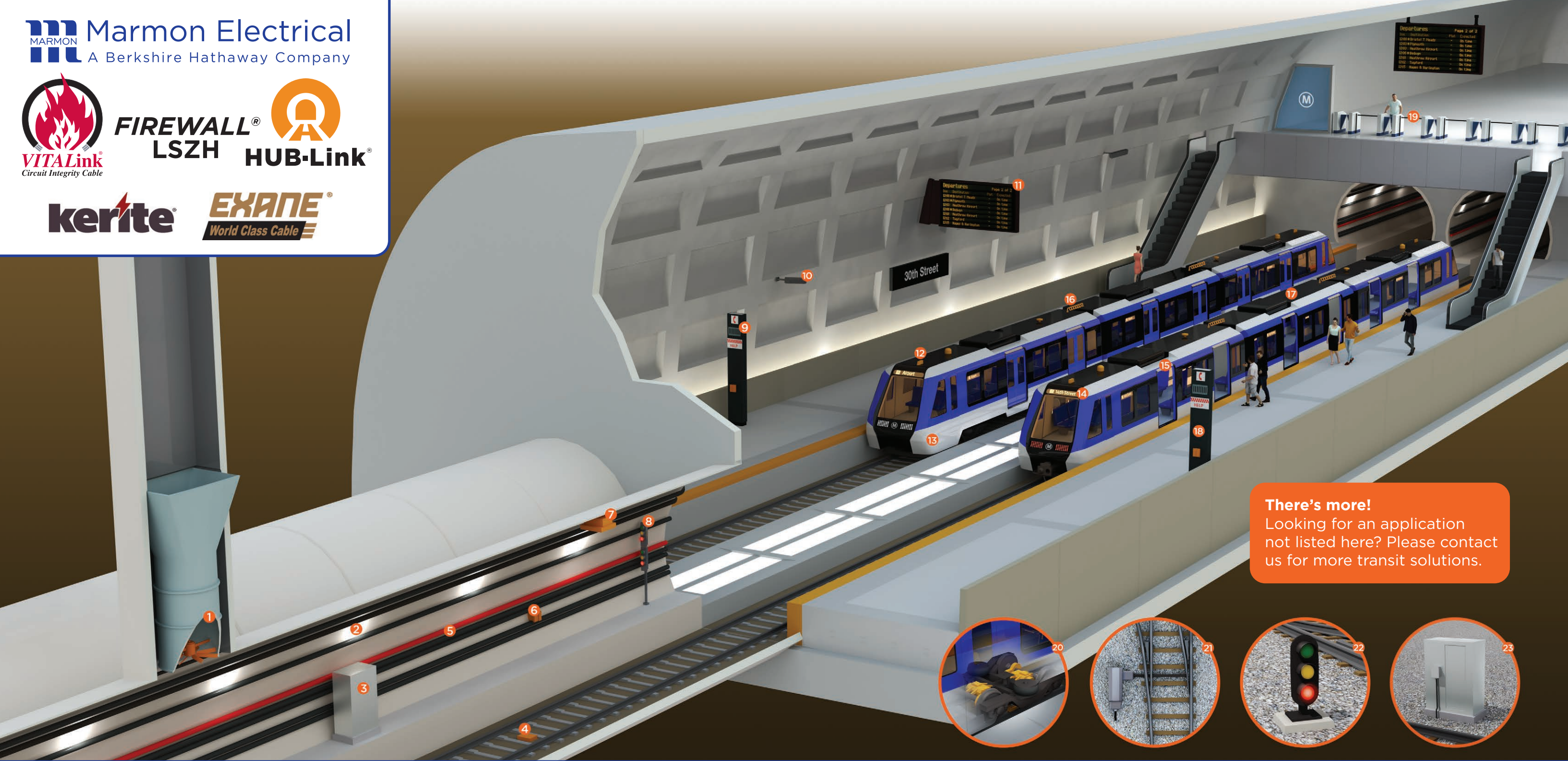
FIREWALL®
LSZH



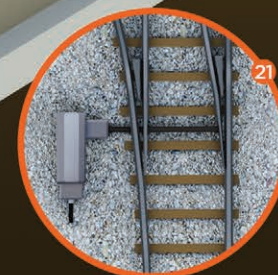
HUB-Link®

kerite®

EXANE®
World Class Cable



There's more!
Looking for an application not listed here? Please contact us for more transit solutions.



Solutions for Transit Applications

VITALink®

Emergency Circuits:

- 1. Ventilation Fan
- 2. Tunnel Lighting
- 5. Power and Signal Cabling
- 6. Tunnel Phones
- 10. Security Cameras
- 18. Station Phones

FIREWALL® LSZH

Non-Emergency Circuits:

- 1. Ventilation Fan
- 2. Tunnel Lighting
- 4. Automatic Train Control Sensor
- 5. Power and Signal Cabling
- 7. Train Communications Antenna
- 8. Tunnel Wayside Signals
- 9. Public Address Systems
- 11. Digital Signage
- 20. Traction Motor Power (Inset)

HUB-Link®

Non-Emergency Circuits:

- 3. Tunnel Bungalow
- 8. Tunnel Wayside Signals
- 9. Public Address Systems
- 10. Security Cameras
- 11. Digital Signage
- 18. Station Phones
- 19. Fare Collection Systems
- 21. Above Ground Switch (Inset)
- 22. Above Ground Wayside Signal (Inset)
- 23. Above Ground Wayside Bungalow (Inset)

KERITE®

Medium Voltage Circuits:

- 5. Power Cabling

EXANE®

Complete Car Wiring:

- 12. On-Car Communications Antenna
- 13. Floor Heaters
- 14. Communications Systems
- 15. Door Control
- 16. Jumper Cable Between Cars
- 17. HVAC Systems