

LED Back-Lit Flat Panel Fixture

More Energy Efficient, Less Expensive



10% More Efficient Than LED Edge-Lit Panel
or **70%** Fluorescent Tube Fixture



110° Beam Angle, Light Is More Directional
(Provide Smooth and Even Lighting Distribution)



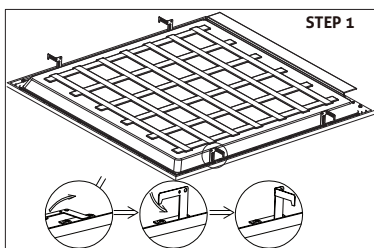
50,000 Hours Lifespan
(Instant Bright Light and No Buzzing or Flickering)



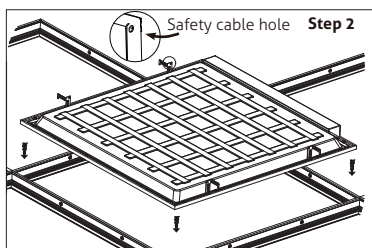
Recessed Mounting



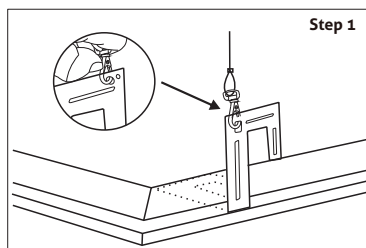
Suspension Mounting



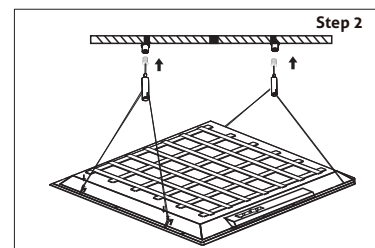
Lift up four mounting clips on the sides of the luminaire.



Insert luminaire into T-bar ceiling grid. Secure safety cable to connection hole.



Lift the mounting clip on the edge of panel, lock the suspension cable to the clip.



Adjust the cable length to meet the height requirements and connect cable to the ceiling.

| | Item# | Description | Watt | Color | Lumens | Hours | W | H | D | Dimmable |
|-----------|----------|------------------------------|------|-------|--------|-------|--------|--------|-------|----------|
| 2FT X 2FT | 85490-SU | LFX/2X2/B-L/40W/40K/D/MV/4PK | 40 | 4000K | 4440 | 50000 | 23.74" | 23.74" | 1.61" | 0-10v |
| | 85491-SU | LFX/2X2/B-L/40W/50K/D/MV/4PK | 40 | 5000K | 4480 | 50000 | 23.74" | 23.74" | 1.61" | 0-10v |
| | 85494-SU | LFX/2X2/B-L/40W/65K/D/MV/4PK | 40 | 6500K | 4240 | 50000 | 23.74" | 23.74" | 1.61" | 0-10v |
| 2FT X 4FT | 85496-SU | LFX/2X4/B-L/50W/40K/D/MV/4PK | 50 | 4000K | 5600 | 50000 | 23.74" | 47.76" | 1.61" | 0-10v |
| | 85497-SU | LFX/2X4/B-L/50W/50K/D/MV/4PK | 50 | 5000K | 5600 | 50000 | 23.74" | 47.76" | 1.61" | 0-10v |
| | 85498-SU | LFX/2X4/B-L/50W/65K/D/MV/4PK | 50 | 6500K | 5500 | 50000 | 23.74" | 47.76" | 1.61" | 0-10v |



sunlite
WWW.SUNLITE.COM

718.768.7000
Toll-Free
800.605.BULB

718.768.0970

NYC Warehouse
744 Clinton Street
Brooklyn, NY 11231

Florida Warehouse
3698 1/2 NW 16th. Bay C
Lauderhill, FL 33311

Specifications may change without notice. We are not responsible for any typographical errors.